

Document Number	SG-P-01345
Revision Number	8
Category	ISC-Global Procurement
Document Type	Procedure
Date In Production	Nov-26-2007
Author(s)	Nicholas Adair/Raleigh/IBM
Document Owner	Jeffrey Miller/Raleigh/IBM
Location	RTP
Department	GQBA
Last Updated	Nov-16-2007
Last Modified By	Nicholas Adair/Raleigh/IBM

Procedure Description

Server Packaging Instructions : x3550, (7978, 1913) Fabricated

NOTE: This document is designed to be used online. You are responsible to use only the "Production" version online.

IMPORTANT NOTICE: The Federal Aviation Administration requires certification that packages shipped by air do not contain explosives, hazardous materials, incendiaries or other destructive devices. Therefore, just prior to sealing the carton, you must inspect its contents to confirm that it contains only parts specified on the IBM bill of materials. If the contents meet specifications, then seal the carton with IBM logo tape or another tamper evident indicator specified on the bill of materials. The logo tape or tamper evident seal will indicate that the carton can be certified to meet FAA standards for air shipment. If you discover parts or devices that appear suspicious (whether or not potentially explosive), carefully secure the carton on the line and notify IBM management promptly.

- Information contained in this document is for reference purposes only.
- Packing process may vary slightly in each manufacturing location.
- No deviation is to be made to the overall assembly without prior written approval from the responsible Packaging Engineer.

Table of Contents

Section 1 - Unit Packaging
Section 2 - Manufacturing Palletization
Section 3 - Distribution
Section 4 - Material Listing (BOM)

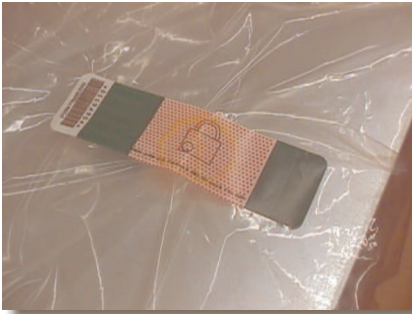
Section 1 - Unit Packaging

1.1 Check all HDD latches and blank drive fillers to ensure that they are closed and latched. **An unlatched HDD may result in damage when the unit is packaged and or shipped .**

1.2 - Assemble carton 43X3234 and tape the bottom flaps shut with IBM Logo Tape 74F5698 or 74F5699.



1.3 - Place bag 32R0130 onto the unit. Seal bag with 06P6550 tamper seal as shown below.



1.4 - The shipping bracket must be attached to the rear of the system as shown.



1.5 - Place front bottom cushion 43X3241 and rear bottom cushion 43X3242 into carton as shown. **DO NOT PLACE SHIPGROUP IN AT THIS TIME. WAIT UNTIL STEP 1.8.**



1.6 - Place the unit into cushions by placing unit into cushion with the front bezel going into cushions first.

Note: Bag is not depicted in the pictures for better visibility of product orientation.



1.7 - Place identical top cushions 43X3243 into the slots in the front and rear bottom cushions.



1.8 - Insert front shipgroup tray 43X3236 into the space in front of the system.



1.9 - Populate shipgroup tray with CMA carton as shown.



Note: Front cushions are next to shipgroup carton .

1.10 - Place rail kit on top of system as shown below.



1.11 - Populate top shipgroup 39Y7774 with publication pack and cords.



1.12 - Place top shipgroup 43X3244 into one of the open spaces to the side of the railkit.



Additional accessory items can be placed inside the accessory carton or placed on top of the unit on the opposite side of the rail kit carton



1.14 - Close flaps and seal carton as shown using IBM logo tape 74F5698 or 74F5699.

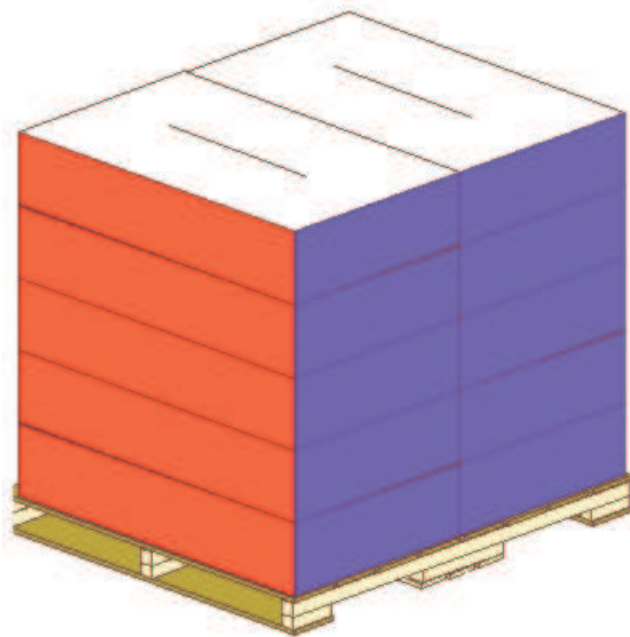


1.15 - Print and place carton labels on label tick marks located on carton. Reference QMX document SG-P-01486 "Special Packaging Labeling Guidelines" which may contain additional labeling requirements.

Section 2 - Manufacturing Palletization

2.1 - Worldwide Palletization

2.1.1 - Place up to 10 systems on a full size pallet (6038887) in even quantities.



2.1.2 - Secure load to pallet utilizing "Best of Breed" palletization methods. See 92F6168 - "Best of Breed" Pallet Unitization.

2.1.3 - Place two pallet labels (33G6283) on the front and left sides of the pallet load.

Section 3 - Distribution

NOTE: All units will be received into Distribution as indicated above in Section2, Manufacturing Palletization.

3.1 - Secure load to pallet (or half pallet) utilizing "Best of Breed" palletization methods. See 92F6168 - "Best of Breed" Pallet Unitization or QMX document P-04146. Use pallet configuration table provided below to determine pallet and empty box usage.

Worldwide

Quantity	Half Pallet	Full Pallet	Ship Individual (no pallet)	Empty Box w / Label
1 - 2			X	
3 - 5	X			
6		X		
7		X		1
8		X		
9		X		1
10		X		

3.2 - Label load for shipment as necessary.

Section 4 - Materials Listing (BOM)

WW Pkg BOM 39Y7593

WW Common Parts 39Y7743

Part Number	Description	QTY
43X3234	Outer Carton	1
43X3243	Top EPE Cushion	2
43X3241	Front Bottom EPE Cushion	1
43X3242	Rear Bottom EPE Cushion	1
43X3244	Top Shipgroup Carton	1
43X3236	Front Shipgroup	1
32R0130	1U Bag	1
06P6550	Padlock Tamper Seal	1
74F5698 or 74F5699	IBM Logo Tape	as needed

Records and Controlled Documents

References

Document Management

Revision History

Approval Information

Nicholas Adair - Approve on 11/26/2007 9:18:17 AM

Editors

History Log

© 2007 IBM Corporation , All Rights Reserved Worldwide
WW SG Document Library Control / D01DB034 / q_dir\qmx\serv\qrod\c.nsf

End of Document