



STG - Systems

Server Packaging Instructions : x3200 M3 (7327, 7328), Rack model

No. SG-P-02069 Rev. 0

Status: In Production

General Information

Document Number	SG-P-02069
Revision Number	0
Category	ISC-Global Procurement
Document Type	Procedure
Date In Production	十一月-08-2009
	If this document contains technology , technical data , or source code , you must Restrict the document access . <ul style="list-style-type: none">For further assistance and guidance on this topic, please visit the Export Regulation Office web site and review the IBM Collaboration Environments Export Evaluation Checklist.
Author(s)	Brian CH Lee/Taiwan/IBM
Header Text	
Document Owner	Jeffrey Miller/Raleigh/IBM
Location	Taiwan/Taipei
Department	
IBM Confidential?	<input type="radio"/> Yes <input checked="" type="radio"/> No
Last Updated	十一月-07-2009
Last Modified By	錯誤: 遠程伺服器不是可以識別的 TCP/IP 主電腦

QMX is located at http://d01db034.pok.ibm.com/q_dir/qmx/serv/qroweb.nsf

Users of this document are responsible for obtaining the latest revision and ensuring the completeness of the document prior to use .

Do not edit or type above this line!

- Information contained in this document is for reference purposes only .
- Process and Part Numbers may vary in each manufacturing location .
- Refer to local site procedures and Bill of Materials for any substitutions .
- No deviation is to be made to the overall assembly without prior written approval from the responsible Packaging Engineer .

Table of Contents

Section 1 - Applicable Systems, MTM Table

Section 2 - Unit Packaging

Section 3 - Manufacturing Palletization and Distribution

Section 4 - Material Listing (BOM)

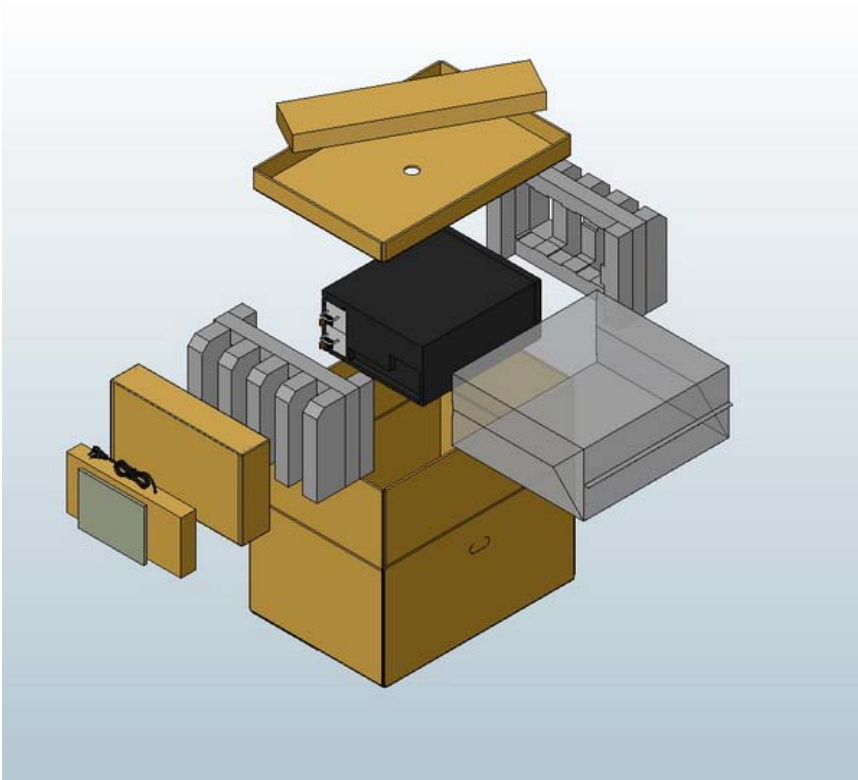
Section 1 - Applicable Systems, MTM Listing

These packaging instructions apply to the following machine types:

Server

7327, 7328

Section 2 - Unit Packaging



2.1 - Assemble carton 43W0292 and tape the bottom flaps shut as shown.



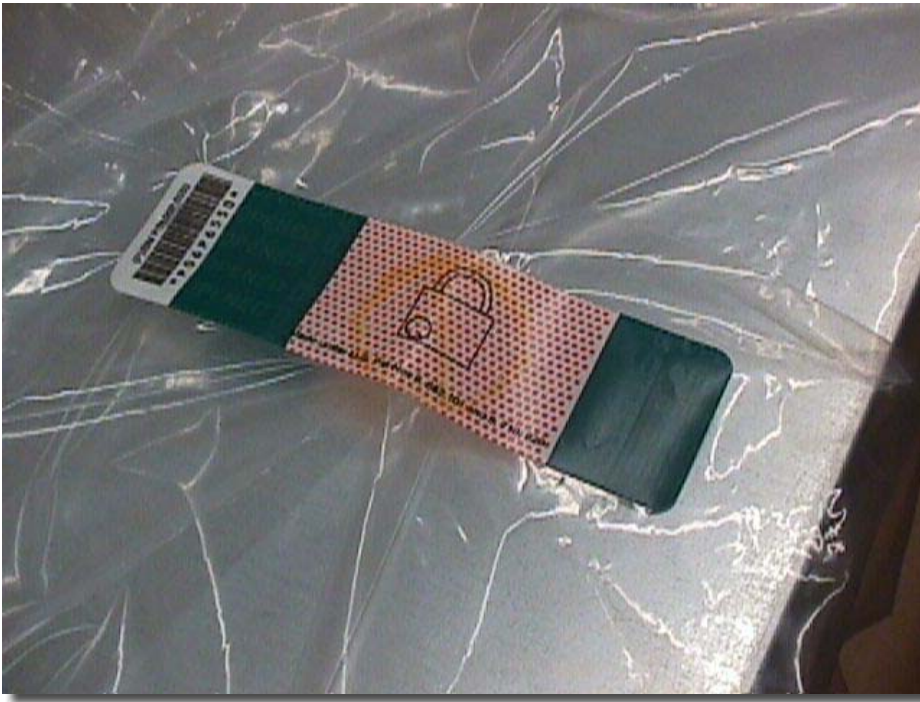
2.2 - Call machine to the packaging station. Verify unit is cosmetically clean and cover is correctly installed. Rotate machine and inspect all sides.

2.3 - Place bag 6165640 over the unit. (see illustration below).

Note: Bag part number can vary depending on geography , and availability . Refer to Packaging BOM for clarification .



2.4 - Fold bag over, and seal bag closed with 06P6550 padlock label. (illustrated below).



2.5 - Remove labels from the printer and apply one carton label to the long side (length) panel using the tick mark provided. Align the bottom of the carton label with the bottom edge of the tick mark. With the carton on its side and while facing the length panel with label (just applied), apply second carton label to the adjacent short side (width) panel to the immediate right. Align the bottom of the carton label with the bottom edge of the tick mark. Orient the carton so its opening faces upwards.



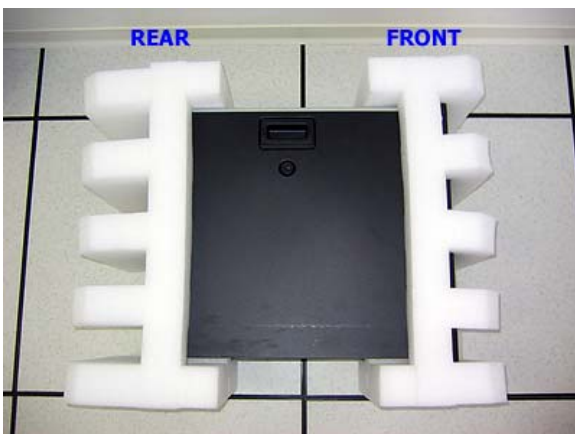


If label 43W8515 (China RoHS label) is called out, place label adjacent to carton label directly to the left or right. This label must not be within 2" (50mm) of the edge or top of the carton.

Examples of China RoHS label placement:



2.6 - Insert system into front and rear cushions, P/N 42C2000 and 49Y8479 as shown (plastic bag was removed here).



2.7 - Lift the cushioned system and place it into bottom of carton. Inspect if chassis door is now on top and the clearance is on the rear side of chassis.



2.8 - Place keyboard, mouse, CD, pubs and other accessories into shipgroup box 43W0248.



2.9 - Place shipgroup box into carton on the rear side of chassis .



2.10 - Place rail kit tray 43W0247 on top of cushioned system as shown below .



2.11 - Place rail kit on the tray. If shipped without rail kit, place foam filler 43V7439 instead to fill the void.



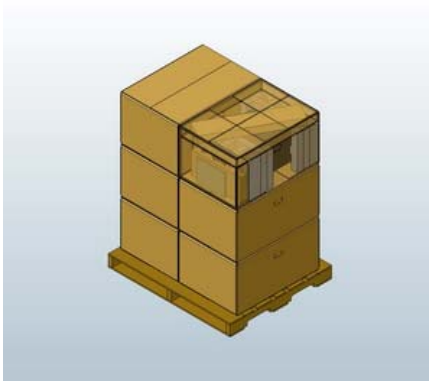
2.12 - Close and seal carton with IBM Logo Tape 74F5698 or 74F5699.



Section 3 - Manufacturing Palletization and Distribution

3.1 - Distribution

Quantity	Half Pallet	Full Pallet	Ship Individual	Empty Box w/Label
1			x	
2 - 3	x			
4		x		
5		x		1
6		x		



3.2 - Secure load to pallet utilizing "Best of Breed" palletization methods. See 92F6168 - "Best of Breed" Pallet Unitization or QMX document P-04146.

3.3 - Place two pallet labels on the front and left sides of the pallet load.

3.4 - Label load for shipment as necessary.

Section 4 - Materials BOM Reference

Refer to BOM in PM for current BOM listing and BOM structure.

WW Common Parts BOM - 59Y3680

Part Number	Description	Qty
43W0292	Outer Carton	1
43W4909	Fabricated Front Cushion	1
49Y8479	Fabricated Rear Cushion	1 <43W0249, Optional for 49Y8479>
43W0248	Shipgroup Box	1
43W0247	Rail Kit Tray	1
6165640	Bag (Geo dependant, refer to BOM for detail)	1
46D2123	Label (Geo dependant, refer to BOM for detail)	1
06P6550*	Padlock Label	1
43V7439	Foam Filler (required when shipping w/o rail kit)	1
74F5698 or 74F5699	IBM Logo Tape	as needed

* Indicates part number not on WW common parts, but in appropriate Local BOM.

Records and Controlled Documents

References

Document Management

Revision History

Approval Information

;

Brian CH Lee/Taiwan/IBM - Reset to Draft - 2009/11/06 - Reason: None Entered Frank SF Chen/Taiwan/IBM - Approved on 11/8/09 22:34:57

Editors

History Log

c 2009 IBM Corporation, All Rights Reserved Worldwide

WW SG Document Library Control / D01DB034 / q_dir\qmx\serv\qrodlc.nsf

End of Document