



STG - Systems

Option Packaging Instruction : Packaging BOM 59Y3809 - Tape Enablement Kit No. SG-P-02129 Rev. 0
No. SG-P-02129 Rev. 0
Status: In Production

General Information

Document Number	SG-P-02129
Revision Number	0
Category	ISC-Global Engineering
Document Type	Procedure
Date In Production	四月-08-2010
	If this document contains technology , technical data , or source code , you must Restrict the document access . <ul style="list-style-type: none">For further assistance and guidance on this topic, please visit the Export Regulation Office web site and review the IBM Collaboration Environments Export Evaluation Checklist.
Author(s)	Brian CH Lee/Taiwan/IBM, Frank SF Chen/Taiwan/IBM
Header Text	
Document Owner	Jeffrey Miller/Raleigh/IBM
Location	Taiwan/Taipei
Department	
IBM_Confidential?	<input type="radio"/> Yes <input checked="" type="radio"/> No
Last Updated	四月-08-2010
Last Modified By	Brian CH Lee/Taiwan/IBM

QMX is located at http://d01db034.pok.ibm.com/q_dir/qmx/serv/qroweb.nsf
Users of this document are responsible for obtaining the latest revision and ensuring the completeness of the document prior to use .

Do not edit or type above this line!

Section 1 : Option P/N Reference

For latest level where used on this packaging BOMS reference Product Manager

BOM COMPONENTS FOR ITEM NUMBER 59Y3809

Comp number	Quantity	Basic name	Description
43X3172	1.0000	SHIP MATL	SHIPGROUP CART
6934015	10.0000	CUSHION	
46D2114	20.0000	TAPE	PRINTED IBM
75H8621	2.0000	CONTAINER	UNIT CARTON
6937292	1.0000	LABEL	ESD
72X5909	1.0000	BAG	ESD
10L2444	1.0000	BAG	POLY BAG
76H2016	1.0000	LABEL	

Section 2 : Packaging Instructions

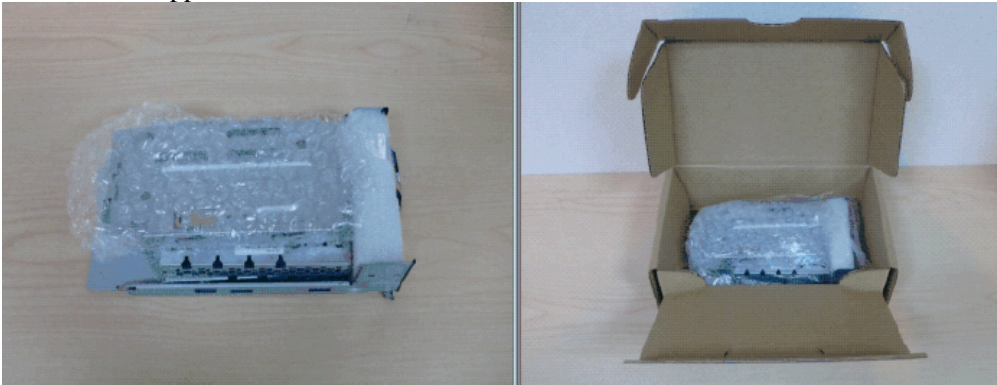
2.1 - Location folding carton P/N 43X3172 and assemble if need be.



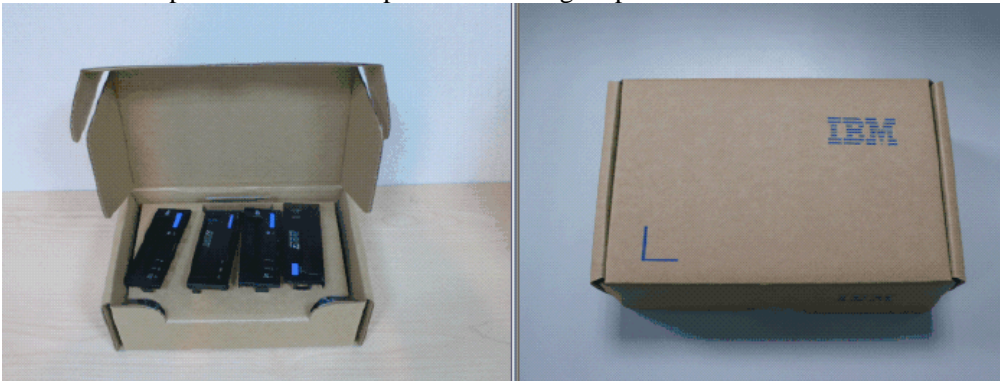
2.2 - Wrap long metal brackets in bubble-wrap P/N 6934015 (16" x 12" piece) and tape it with logo tape P/N 74F5698.



2.3 - Place wrapped metal brackets into carton P/N 75H8621.



2.4 - Place the plastic bezel and tape close with logo tape P/N 74F5698.



2.5 - Find bezel and wrap it in an additional 16" x 24" piece of bubble-wrap P/N 6934015.
- Place bezel and carton P/N 75H8621 into carton P/N 43X3172 as shown below.



2.6 - Place wrapped cables in between bezel and carton P/N 75H8621



2.7 - Locate riser cage and place into ESD bag P/N 72X5909 and seal bag with ESD seal P/N 6937292.



2.8 - Place the bagged riser cage in carton P/N 75H8621 making sure the printed circuit board side of the cage is on the side of the carton with the top flap.



2.9 - Flip the divider over on top of the bagged cage, shut the tuck-lock and seal with IBM logo tape P/N 46D2114.



2.10 - Place boxed riser card cage in the carton as shown.



2.11 - Place additional option items into 43X3172.

2.13 - Tape carton closed with IBM logo tape P/N 46D2114.

2.14 - Place printed option label P/N 76H2016 on the top of the carton.

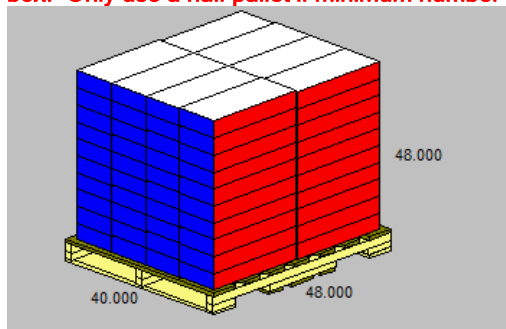
Section 3 : Palletization Instructions

US Shipments Only:

3.1.1 - Place up to 80 options on a full size pallet P/N 6038887 or 40 options on a half pallet P/N 6038888 in even quantities.

Quantity	Half Pallet 6038888	Full Pallet 6038887	Over-pack TBD 50lb Max	Multiple Over-packs	No Pallet - Ship Individual
1					X
2-5			X		X
6-19				X	X
20-40	X				
41-80		X			

****Note - Each over-pack box shipping without a pallet should not exceed 50lbs, if over, need to get a second over-pack box. Only use a half pallet if minimum number on the chart is met . ****



3.1.2 - Secure load to pallet utilizing "Best of Breed" palletization methods. See P/N 92F6168 - "Best of Breed" Pallet Unitization.

3.1.3 - Place two pallet labels P/N 33G6283 on the front and left sides of the pallet load.

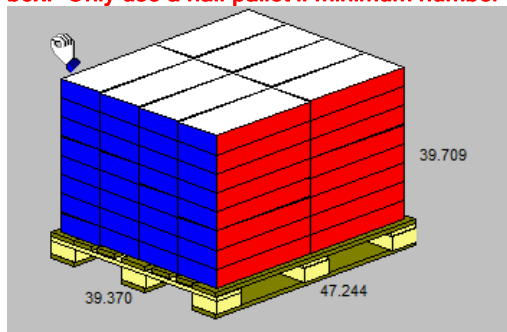
WW Excluding US Shipments:

3.2.1 - Place up to 64 options on a full size pallet P/N 7310275 or 32 options on a half pallet P/N 7373961 in even quantities.

Quantity	Half Pallet 7373961	Full Pallet 7310275	Overpack TBD 50lb Max	Multiple Over-packs	No Pallet - Ship Individual
1					X
2-5			X		X
6-19				X	X
20-32	X				
33-64		X			

****Note - Each over-pack box shipping without a pallet should not exceed 50lbs, if over, need to get a second over-pack

box. Only use a half pallet if minimum number on the chart is met .****



3.2.2 - Secure load to pallet utilizing "Best of Breed" palletization methods. See P/N 92F6168 - "Best of Breed" Pallet Unitization.

3.2.3 - Place two pallet labels P/N 33G6283 on the front and left sides of the pallet load.

Records and Controlled Documents

References

Document Management

Revision History

Approval Information

Frank SF Chen/Taiwan/IBM - Approved on 4/8/10 5:58:21

Editors

History Log

c 2010 IBM Corporation, All Rights Reserved Worldwide

WW SG Document Library Control / D01DB034 / q_dir\qmx\serv\qrodic.nsf

End of Document