

Document Number	SG-P-01721
Revision Number	1
Category	WW-P&PSG-Packaging
Document Type	Procedure
Author(s)	Enzo ZD Huang/Taiwan/IBM
Document Owner	Jeffrey Miller/Raleigh/IBM
Location	RTP
Department	GQBA
Last Updated	十月-02-2007
Last Modified By	Enzo ZD Huang/Taiwan/IBM

Procedure Description

Table of Contents

Section 1 - Applicable Systems, MTM Table
Section 2 - Unit Packaging
Section 3 - Manufacturing Palletization
Section 4 - Distribution
Section 5 - Material Listing (BOM)

Section 1 - Applicable Systems, MTM Table

This packaging instruction is a replacement for instruction described in Document Number P-04430 Rev.4

This packaging instruction applies to the following machine types:

Server

8849, 4364, 4365, 4366, 4190

Use this package instruction with fabricated cushion set.

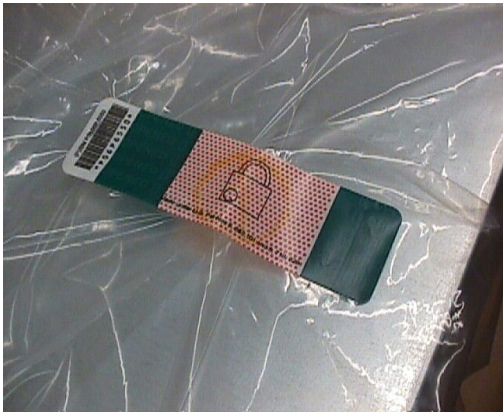
Section 2 - Unit Packaging

2.1 - Assemble carton 44T2056 and tape the bottom flaps shut as shown



2.2 - Place bag 37L7937 onto the unit.

2.3 - Fold bag over, and seal bag closed with 06P6550 padlock label. (Illustrated below).



2.4 - Remove labels from the printer and apply one carton label to the long side (length) panel using the tick mark provided. Align the bottom of the carton label with the bottom edge of the tick mark. With the carton on its side and while facing the length panel with label (just applied), apply second carton label to the adjacent short side (width) panel to the immediate right. Align the bottom of the carton label with the bottom edge of the tick mark. Orient the carton so its opening faces upwards.
If label 43W8515 (China RoHS label) is called out, place label adjacent to carton label directly to the left or right. This label must not be within 2" (50mm) of the edge or top of the carton.

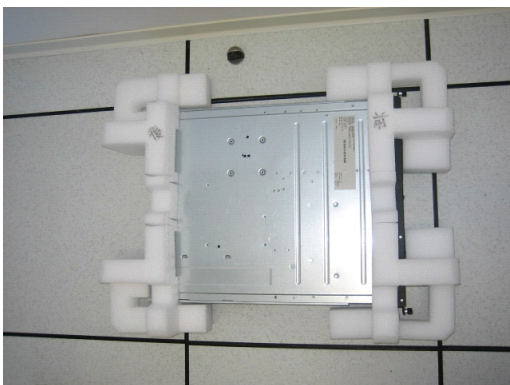
Examples of China RoHS label placement:



2.5 - Elevate system on support



2.6 - Put front cushion 46C1102 and rear cushion 46C1103 in place as shown



2.7 - Place shipgroup into trapezoidal side tray 44T2058. Close the tray and push the rounded flap into the matching square hole to form hand hole as shown.

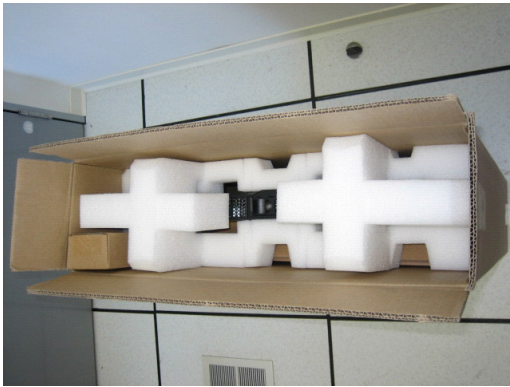


2.8 - Place side tray (hand hole of tray pointing towards rear cushion) and rail kit onto assembly as shown



2.9 - Slide assembly bottom first into the carton.



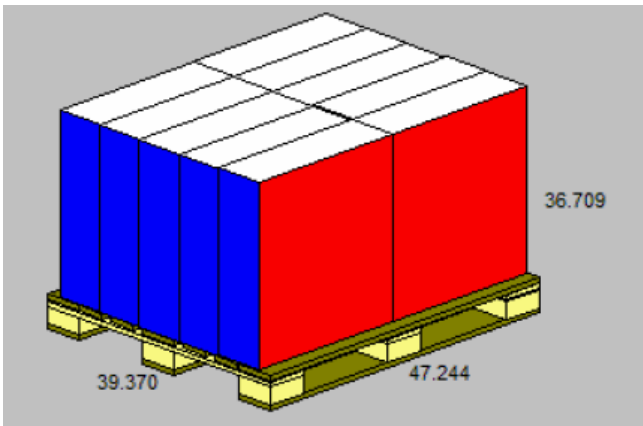


2.10 - Close flaps and seal carton as shown using IBM logo tape. Carton should be palletized standing upright with front facing up.



Section 3 - Manufacturing Palletization

3.1 - Place up to 10 systems on a full size pallet (6038887) in even quantities.



3.2 - Secure load to pallet utilizing "Best of Breed" palletization methods. See 92F6168 - "Best of Breed" Pallet Unitization or QMX document P-04146.

3.3 - Place two pallet labels 43X3129 on the front and left sides of the pallet load.

Section 4 - Distribution

NOTE: All units will be received into Distribution as indicated above in Section 3, Manufacturing Palletization, and are approved to be stacked 4 pallets high.

4.1 - Secure load to pallet (or half pallet) utilizing "Best of Breed" palletization methods. See 92F6168 - "Best of Breed" Pallet Unitization or QMX document P-04146.

Use pallet configuration table provided below to determine pallet and empty box usage.

Quantity	Half Pallet	Full Pallet	Ship Individual	Empty Box w /Label
1 - 3			x	
4	x			1
5	x			
6-7	x		x	
8		x		2
9		x		1

10		x	
----	--	---	--

4.2 - Label load for shipment as necessary.

Section 5 - Materials Listing (BOM)

Refer to BOM in PM for current BOM listing and BOM structure.

WW Common Parts BOM

Part Number	Description	Qty
44T2056	Carton	1
46C1102	Fab front Cushion	1
46C1103	Fab rear Cushion	1
44T2058	Shipgroup Tray	1
37L7937	Bag (Geo dependant, refer to BOM for detail)	1
43X3129	Label	2
06P6550*	Padlock Label	1
74F5698 or 74F5699	IBM Logo Tape	as needed

* Indicates part number not on WW common parts, but in appropriate Local BOM.

Records and Controlled Documents

References

Document Management

Revision History

This Version	Created by	Last Date Updated	Short Description of Changes
1	Enzo ZD Huang/Taiwan/IBM	十月-02-2007	Link BOM to instructions
Previous Versions			
0	Enzo ZD Huang/Taiwan/IBM	十月-01-2007	Initial Version

Long Description of Changes

Corrected wrong P/N of shipgroup tray in instructions (2.7)
Added reference of Label 43X3129 in instructions (3.3)

Edits to this Revision

2007/10/02 11:46:45 AM - Enzo ZD Huang/Taiwan/IBM

Approval Information

Editors

History Log

c 2007 IBM Corporation , All Rights Reserved Worldwide
WW SG Document Library Control / D01DB034 / q_dir\qmx\serv\qrodic.nsf

End of Document
