

Document Number	SG-P-01720
Revision Number	0
Category	WW-P&PSG-Packaging
Document Type	Procedure
Date In Production	九月-30-2007
Author(s)	Enzo ZD Huang/Taiwan/IBM
Document Owner	Jeffrey Miller/Raleigh/IBM
Location	RTP
Department	GQBA
Last Updated	十月-01-2007
Last Modified By	Enzo ZD Huang/Taiwan/IBM

Procedure Description

Table of Contents

Section 1 - Applicable Systems, MTM Table
Section 2 - Unit Packaging
Section 3 - Manufacturing Palletization
Section 4 - Distribution
Section 5 - Material Listing (BOM)

Section 1 - Applicable Systems, MTM Table

These packaging instructions apply to the following machine types:

Server

8849, 4364, 4365, 4366, 4190

Use this package instruction with molded cushion set.

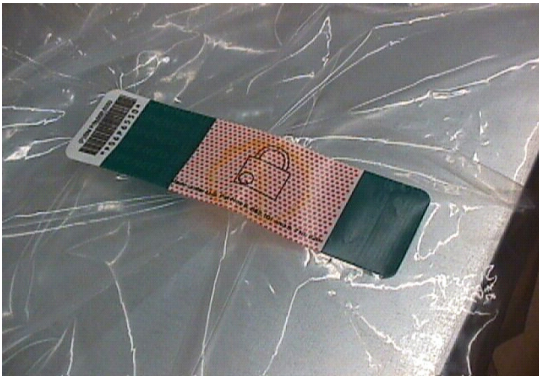
Section 2 - Unit Packaging

2.1 - Assemble carton 44T2056 and tape the bottom flaps shut as shown



2.2 - Place bag 37L7937 onto the unit.

2.3 - Fold bag over, and seal bag closed with 06P6550 padlock label. (illustrated below).

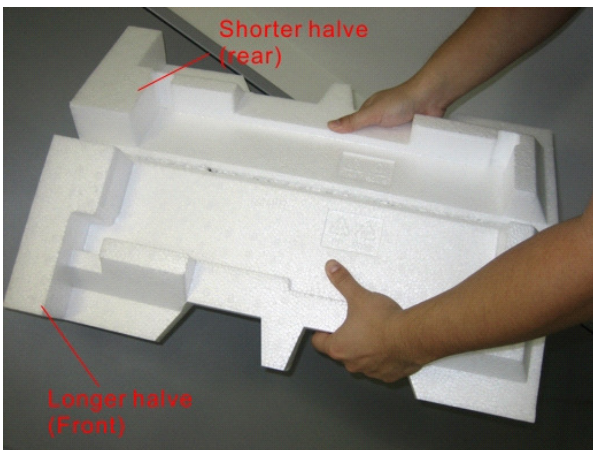


2.4 - Remove labels from the printer and apply one carton label to the long side (length) panel using the tick mark provided. Align the bottom of the carton label with the bottom edge of the tick mark. With the carton on its side and while facing the length panel with label (just applied), apply second carton label to the adjacent short side (width) panel to the immediate right. Align the bottom of the carton label with the bottom edge of the tick mark. Orient the carton so its opening faces upwards.
If label 43W8515 (China RoHS label) is called out, place label adjacent to carton label directly to the left or right. This label must not be within 2" (50mm) of the edge or top of the carton.

Examples of China RoHS label placement:



2.5 - Break apart bottom molded cushion set 43W4913 and top moulded cushion set 43W4912.



2.6 - Put shorter halves of bottom cushion and top cushion together and place into carton as shown

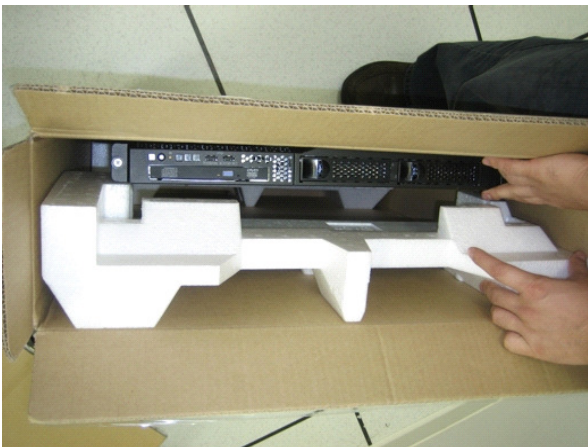


2.7 - Place system, rear end first, onto the cushions.



Note that groove for rail kit is located at top left hand corner of system .

2.8 - Shift the system off center to place the remaining halve of bottom cushion .



2.9 - Insert rail kit into the side groove of the cushions .



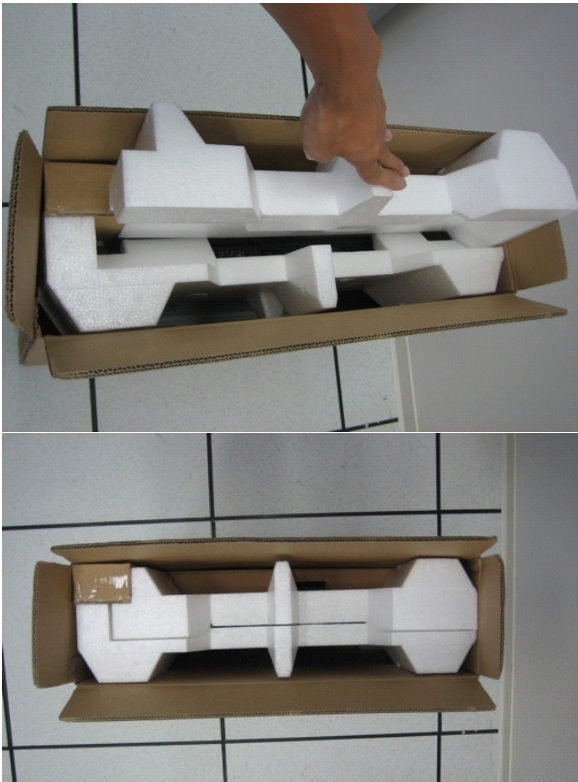
2.10 - Place shipgroup 39Y7774 into trapezoidal side tray. Close the tray and push the rounded flap into the matching square hole.



2.11 - Ensure the trapezoidal profile of the tray matches the cushions and insert into the carton.



2.12 - Place the remaining halve of top cushion into the carton as shown.

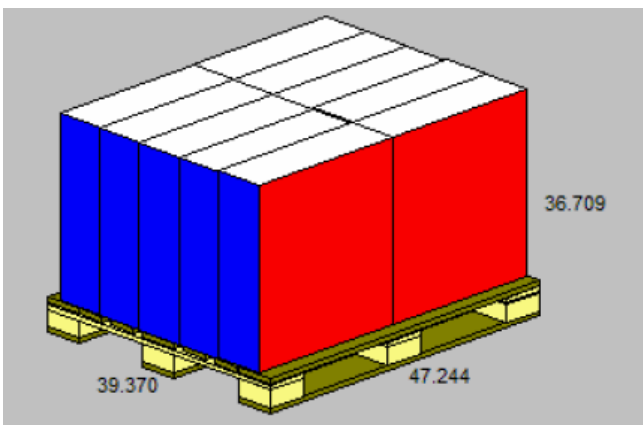


2.13 - Close flaps and seal carton as shown using IBM logo tape.



Section 3 - Manufacturing Palletization

3.1 - Place up to 10 systems on a full size pallet (6038887) in even quantities.



3.2 - Secure load to pallet utilizing "Best of Breed" palletization methods. See 92F6168 - "Best of Breed" Pallet Unitization or QMX document P-04146.

3.3 - Place two pallet labels on the front and left sides of the pallet load.

Section 4 - Distribution

NOTE: All units will be received into Distribution as indicated above in Section 3, Manufacturing Palletization, and are approved to be stacked 4 pallets high.

4.1 - Secure load to pallet (or half pallet) utilizing "Best of Breed" palletization methods. See 92F6168 - "Best of Breed" Pallet Unitization or QMX document P-04146.

Use pallet configuration table provided below to determine pallet and empty box usage.

Quantity	Half Pallet	Full Pallet	Ship Individual	Empty Box w /Label
1 - 3			x	
4	x			1
5	x			
6-7	x		x	
8		x		2
9		x		1
10		x		

4.2 - Label load for shipment as necessary.

Section 5 - Materials Listing (BOM)

Refer to BOM in PM for current BOM listing and BOM structure.

WW Common Parts BOM

Part Number	Description	Qty
44T2056	Carton	1
43W4912	Moulded top Cushion	1
43W4913	Moulded bottom Cushion	1
44T2058	Shipgroup Tray	1
37L7937	Bag (Geo dependant, refer to BOM for detail)	1
43X3129	Label	2
06P6550*	Padlock Label	1
74F5698 or 74F5699	IBM Logo Tape	as needed

* Indicates part number not on WW common parts, but in appropriate Local BOM.

Records and Controlled Documents

References

Document Management

Revision History

Approval Information

Editors

History Log

c 2007 IBM Corporation , All Rights Reserved Worldwide

WW SG Document Library Control / D01DB034 / q_dir\qmx\serv\qrodic.nsf

End of Document