



IBM System x

IBM Inventory Tool for
Microsoft System Center Configuration Manager
User's Guide

Version 5.0





IBM System x

IBM Inventory Tool for

Microsoft System Center Configuration Manager

User's Guide

Version 5.0

Note

Before using this information and the product it supports, read the information in “Notices” on page 43.

Edition Notice

This edition applies to the IBM Inventory Tool for Microsoft System Center Configuration Manager, v5.0 and to all subsequent releases and modifications until otherwise indicated in new editions.

© Copyright IBM Corporation 2014.

US Government Users Restricted Rights – Use, duplication or disclosure restricted by GSA ADP Schedule Contract with IBM Corp.

Contents

Figures	v
--------------------------	----------

Tables	vii
-------------------------	------------

About this publication	ix
Conventions and terminology	ix

Information resources	xi
PDF files	xi
World Wide Web resources	xii

Chapter 1. IBM Inventory Tool for Microsoft System Center Configuration Manager, v5.0	1
Trial license support	1
Premium features.	1
How IBM Inventory Tool for Microsoft System Center Configuration Manager, v5.0 supports IBM systems	2
IBM Inventory Tool hardware and software requirements	2
Hardware requirements.	2
Supported operating systems	2
Required software	2

Chapter 2. IBM Inventory Tool installation	3
Downloading and installing IBM Inventory Tool	3
Uninstalling the IBM Inventory Tool	11

Chapter 3. Working with IBM Inventory Tool and System Center Configuration Manager 2007.	13
Deploy the IBM Inventory Tool Client Package from the Microsoft System Center Configuration Manager server to Microsoft System Center Configuration Manager client	13

Look for hardware inventory of clients from the Microsoft System Center Configuration Manager server	23
--	----

Chapter 4. Working with IBM Inventory Tool and Microsoft System Center Configuration Manager 2012	25
Deploy the IBM Inventory Tool Client Package from the Microsoft System Center Configuration Manager server to Microsoft System Center Configuration Manager client	25
View hardware inventory of clients from the Microsoft System Center Configuration Manager server	32

Chapter 5. Supported hardware and software	35
Supported Microsoft System Center products	35
Supported client systems	35
Supported operating systems	37
Required software on client machines	37

Appendix A. Troubleshooting	39
--	-----------

Appendix B. Accessibility features for IBM Inventory Tool	41
--	-----------

Notices	43
Trademarks	44
Important notes	45

Figures

1. Preparing to Install IBM Inventory Tool	4	20. Advertisement Subcollection page	20
2. SCCM 2007 or later not installed message	4	21. Advertisement Schedule page	21
3. InstallShield Wizard Welcome page for IBM Inventory Tool	5	22. Assign Program page	22
4. Software License agreement	6	23. Wizard Completed page	23
5. Trial Version	7	24. Select client	24
6. Destination folder	7	25. Start Resource Explorer wizard	24
7. IBM Inventory Tool Run Cycle	8	26. Look for hardware inventory.	24
8. Example of invalid value for Week	9	27. IBM Inventory ToolClient package	25
9. Ready to install the program page	10	28. Deploy IBM Inventory Tool package	25
10. Installation progress being depicted	10	29. General page	26
11. InstallShield Wizard Completed	11	30. Content page	27
12. IBM Inventory Tool Client package	13	31. Deployment Settings page	28
13. Distribute IBM Inventory Tool Client package	14	32. Scheduling page	29
14. Distribute Package Wizard welcome page	14	33. User Experience page	30
15. Distribution points	15	34. Summary page	31
16. Advertise Program page	16	35. Completion page.	32
17. Select program page	17	36. Select client	33
18. Advertisement Target page	18	37. Start Resource Explorer	33
19. Advertisement Name page	19	38. View hardware inventory	34

Tables

1. Frequently used terms and acronyms ix	2. Supported Systems 35
--	-----------------------------------

About this publication

This User's Guide provides the latest information for IBM® Inventory Tool for Microsoft System Center Configuration Manager. IBM Inventory Tool is used to view IBM hardware inventory of the SCCM client.

Conventions and terminology

Paragraphs that start with a bold **Note**, **Important**, or **Attention** are notices with specific meanings that highlight key information.

Note: These notices provide important tips, guidance, or advice.

Important: These notices provide information or advice that might help you avoid inconvenient or difficult situations.

Attention: These notices indicate possible damage to programs, devices, or data. An attention notice appears before the instruction or situation in which damage can occur.

Table 1. Frequently used terms and acronyms

Term/Acronym	Definition
DSA	IBM Dynamic System Analysis
MSCCM	Microsoft System Center Configuration Manager
SCCM	System Center Configuration Manager
SEP	IBM System Enablement Pack
SSL	Secure Sockets Layer
UXSP	UpdateXpress System Packs
UXSPi	UpdateXpress System Package Installer
WSUS	Windows Server Update Services

Information resources

You can find additional information about IBM Inventory Tool for Microsoft System Center Configuration Manager, v5.0 in the product documentation and on the World Wide Web.

PDF files

View or print documentation that is available in Portable Document Format (PDF).

Downloading Adobe Acrobat Reader

You need Adobe Acrobat Reader to view or print these PDF files. You can download a copy from the Adobe Reader Web site.

Viewing and printing PDF files

You can view or print any of the PDF files in the following list. Go to Microsoft System Management Solutions for IBM Servers to sign in and locate the download links for the publications. The most current version of each document is available on the product download page.

- *IBM Inventory Tool for Microsoft System Center Configuration Manager, v5.0, Release Notes*
- *IBM Inventory Tool for Microsoft System Center Configuration Manager, v5.0, User's Guide*

Saving PDF files

To save a PDF file, complete the following steps:

1. Right-click the link to the PDF in your browser.
2. Perform one of the following tasks.

Web browser	Command
For Internet Explorer	Click Save Target As .
For Netscape Navigator or Mozilla	Click Save Link As .

3. Navigate to the directory in which you want to save the PDF file.
4. Click **Save**.

World Wide Web resources

The following web pages provide resources for understanding, using, and troubleshooting IBM System x, BladeCenter® servers, and systems-management tools.

IBM website for Microsoft Systems Management Solutions for IBM Servers

Microsoft System Management Solutions for IBM Servers

Locate the latest downloads for IBM Inventory Tool for Microsoft System Center Configuration Manager, v5.0.

IBM Systems Technical support site

Support for IBM Systems.

Locate support for IBM hardware and systems-management software.

IBM Systems Management Software: Download Software Registration

IBM Systems Director: Download Registration

Download IBM systems-management software, including IBM Systems Director.

IBM System x Systems Management page

IBM systems management solutions for System x

Provides an overview of IBM systems management using IBM Director Agent and IBM Director Core Services.

IBM ServerProven® pages

IBM ServerProven Compatibility for hardware, applications, and middleware

IBM ServerProven Compatibility for BladeCenter products

Obtain information about hardware compatibility with IBM System x, IBM BladeCenter, and IBM IntelliStation® hardware.

Microsoft System Center Configuration Manager page

Microsoft System Center Technical Resources

Chapter 1. IBM Inventory Tool for Microsoft System Center Configuration Manager, v5.0

The topics in this section provide a description of IBM Inventory Tool for Microsoft System Center Configuration Manager, v5.0.

Through its alliance with Microsoft System Center products Microsoft System Center Configuration Manager (SCCM), IBM Inventory Tool for Microsoft System Center Configuration Manager, v5.0 reduces the time and effort it takes to view the hardware inventory of clients from the server.

Trial license support

IBM Inventory Tool IBM Inventory Tool is a fee-based product that provides an inventory of various system components and configurations, including an overview of the system, memory, BIOS/UEFI, drivers, IMM configuration, and options (such as, LSI, Qlogic, Brocade, Broadcom, Mellanox, Emulex). The trial license makes a few of these basic inventory options available, such as system overview, memory, and BIOS/UEFI.

To enable the other premium features, after the product license is activated, you must run the IBM Inventory Tool server configuration from the **Start** menu.

Premium features

Premium features are available when the IBM Inventory Tool installation is registered with a license for IBM Upward Integration for Microsoft System Center, v4.0 or later.

You can purchase Activation licenses by contacting your IBM representative or an IBM Business Partner. You can also purchase a product license for IBM Upward Integration for MSSC online from IBM.

The following feature is a fee-based function that is enabled with a valid product license of v4.0 or later:

- Provide ability to configure SCCM server to collect IBM hardware inventory of Drivers, IMM configuration and options (such as, LSI, Qlogic, Brocade, Broadcom, Mellanox, Emulex).

How IBM Inventory Tool for Microsoft System Center Configuration Manager, v5.0 supports IBM systems

IBM Inventory Tool for Microsoft System Center Configuration Manager, v5.0 provides the ability to view an IBM hardware inventory of SCCM client from the SCCM server.

IBM Inventory Tool hardware and software requirements

The topics in the section describe the hardware and software requirements for IBM Inventory Tool.

Hardware requirements

The IBM Inventory Tool tool can be run on a non-IBM server or IBM server that supports the Windows operating system and SCCM.

Supported operating systems

The IBM Inventory Tool tool supports the following Windows operating systems:

- Windows Server 2003 SP2/R2
- Windows Server 2003 SP2/R2 x64
- Windows Server 2008 SP1/SP2
- Windows Server 2008 SP1/SP2 x64
- Windows Server 2008 SP1/R2
- Windows Server 2012
- Windows Server 2012 R2

Required software

Microsoft System Center Configuration Manager 2007 or 2012 is required.

Chapter 2. IBM Inventory Tool installation

The topics in this section describe how to install and uninstall IBM Inventory Tool.

Downloading and installing IBM Inventory Tool

This topic describes how to install IBM Inventory Tool.

Before you begin

There are two methods for installing IBM Inventory Tool for Microsoft System Center Configuration Manager, v5.0. The first method uses the IBM Inventory Tool for Microsoft System Center Configuration Manager, v5.0 setup package (.exe file). The second method uses the IBM Upward Integration for Microsoft System Center Installer. For more information about the IBM Upward Integration for Microsoft System Center Installer refer to IBM Upward Integration for Microsoft System Center bundle - IBM BladeCenter and System x.

Procedure

1. Go to IBM System x Integration Offerings for Microsoft Systems Management Solutions.
2. Click **Microsoft System Center Configuration Manager (SCCM), Inventory Tool** to download the latest version of the IBM Inventory tool. The Preparing to Install page for the IBM Inventory Tool opens.
3. Click **Next**. The InstallShield Wizard page opens. If for some reason you need to stop the installation, click **Cancel**.

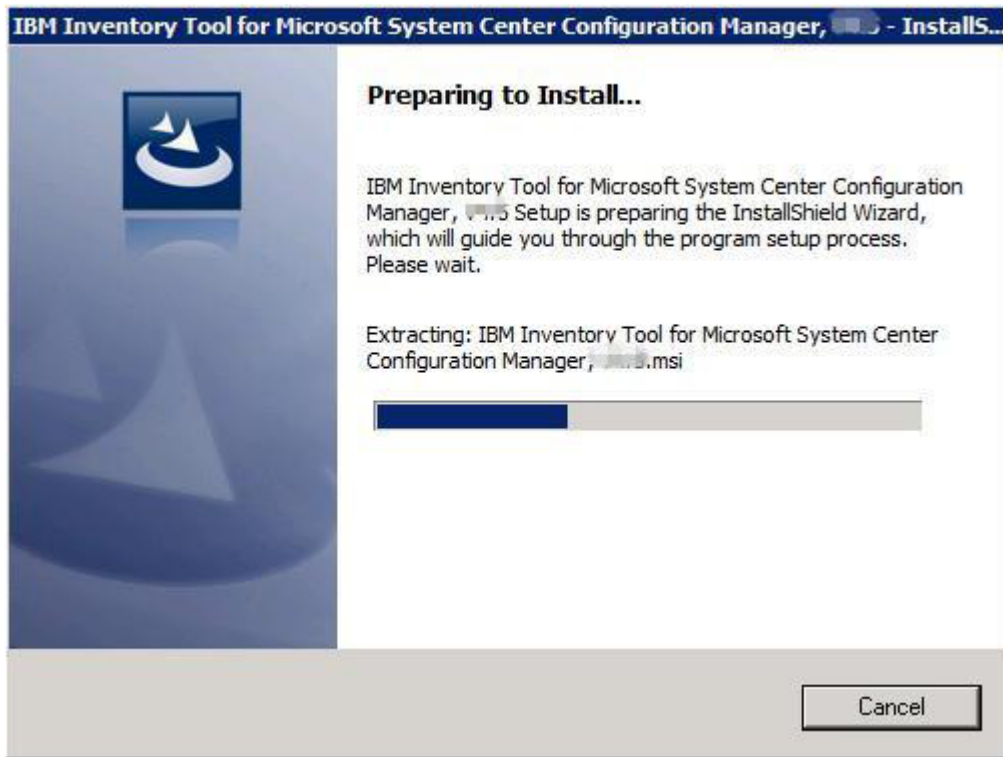


Figure 1. Preparing to Install IBM Inventory Tool

Note: If Microsoft System Center Configuration Manager 2007 or later is not installed on your system, the following message is displayed. Click **OK** to stop the program and complete the installation.

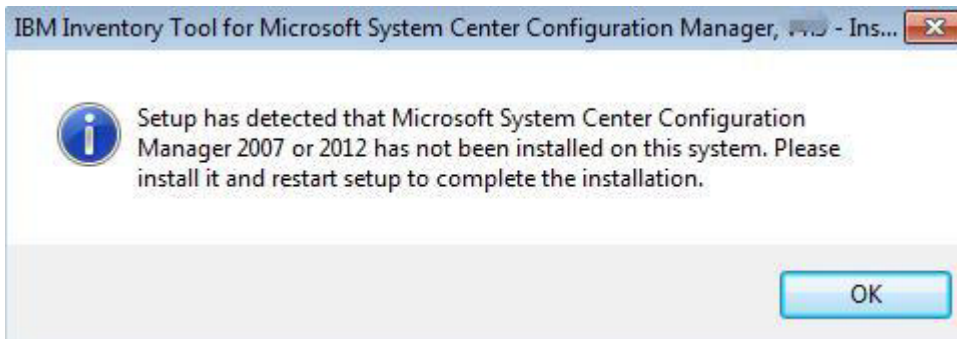


Figure 2. SCCM 2007 or later not installed message

4. While the program installs, click **Next** to proceed to the License Agreement page.

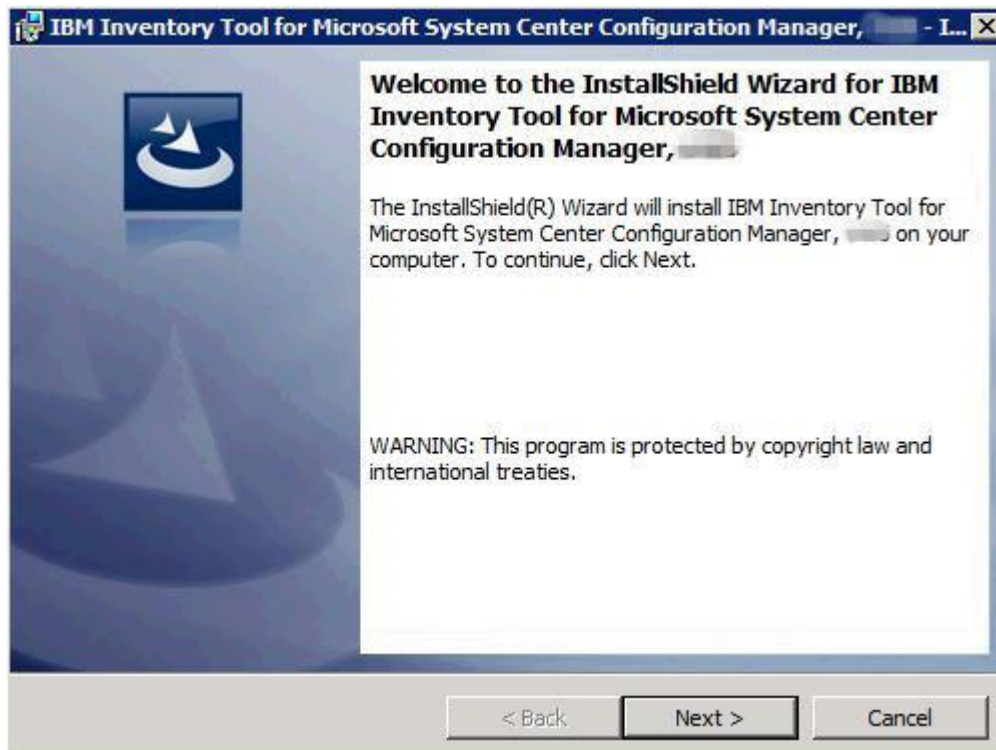


Figure 3. InstallShield Wizard Welcome page for IBM Inventory Tool

5. Read the license agreement terms and then select **I accept the terms in the license agreement**. Click **Next**.

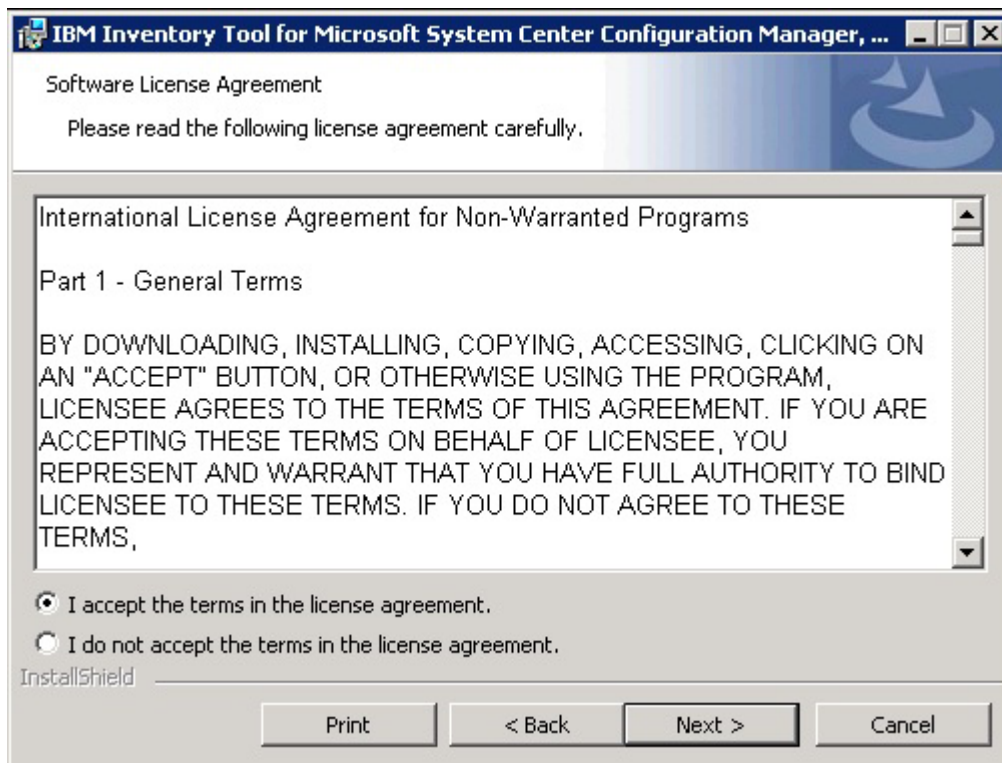


Figure 4. Software License agreement

6. If no product license is activated, the Trial Version page opens. (If a product license is activated, the Destination Folder page opens and you can proceed to step 7.) On the Trial Version page, you can click **Contact IBM** to obtain a valid product license, then click **Next** to proceed to the Destination Folder page.

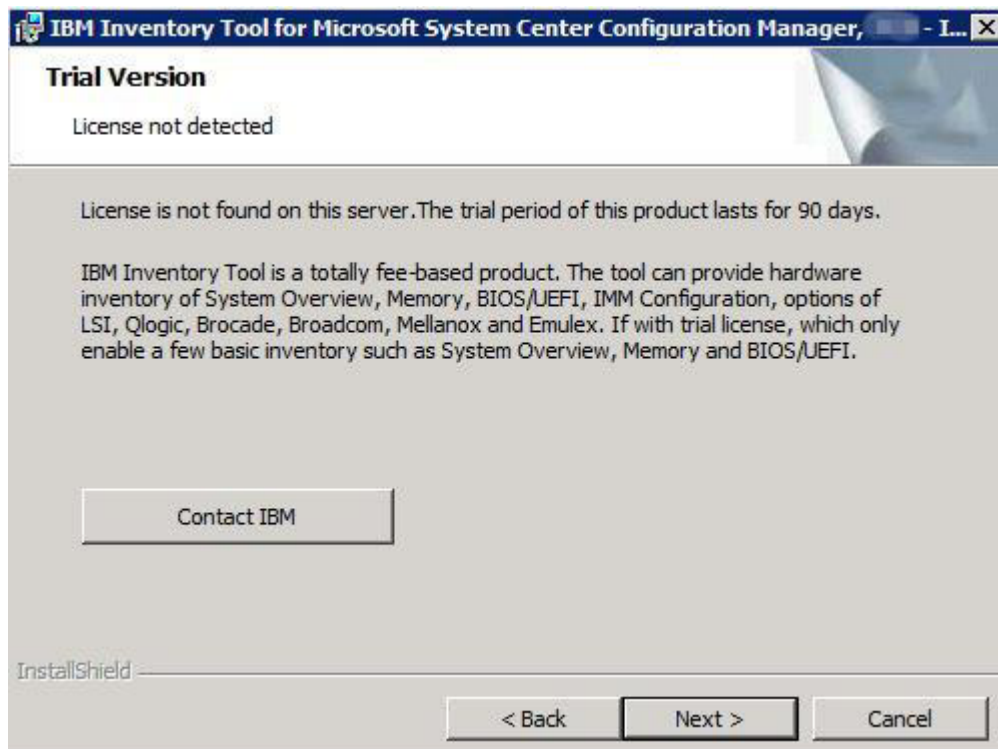


Figure 5. Trial Version

7. On the Destination Folder page, either click **Next** to accept the default installation directory, or click **Change** and enter a new location.

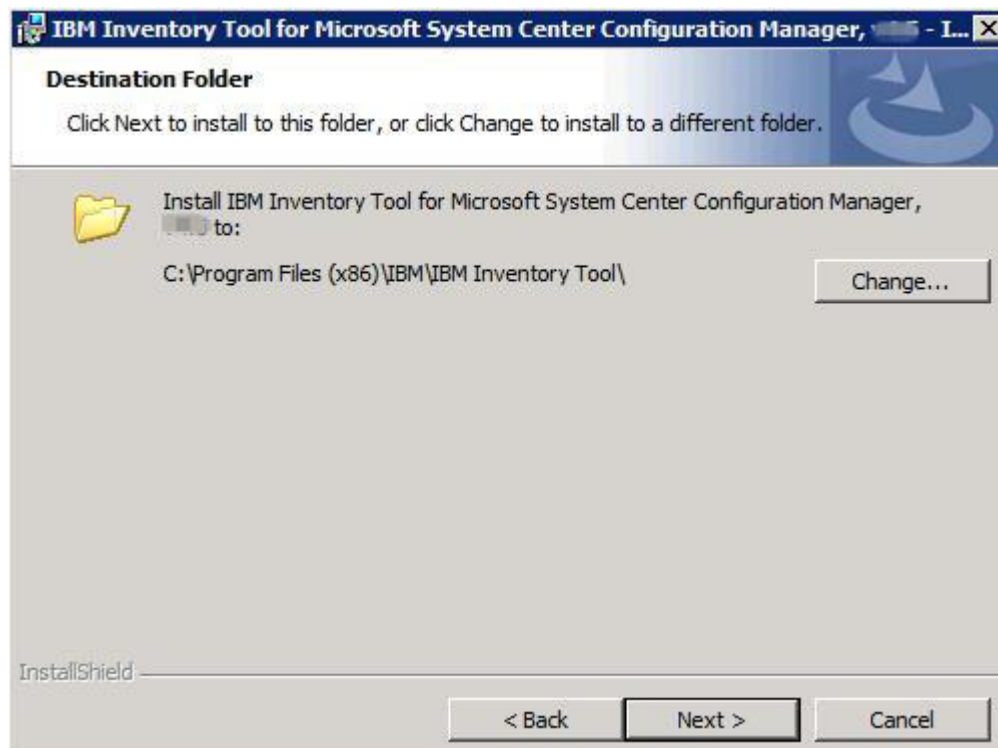


Figure 6. Destination folder

8. On the IBM Inventory Tool Client Run Cycle page, either click **Next** to use default run cycle value, or enter a different run cycle value.

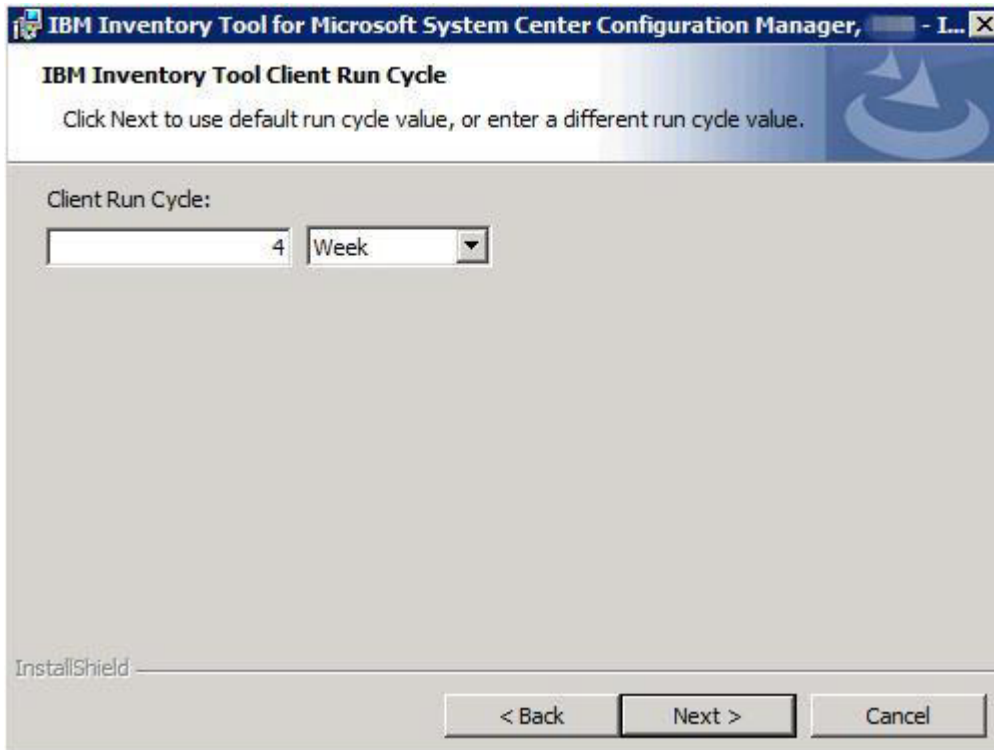


Figure 7. IBM Inventory Tool Run Cycle

Note: The value ranges for the client run cycle are 1 through 65 for **Day** and 1 through 52 for **Week**. The installation will not continue if you enter a value that is not valid.

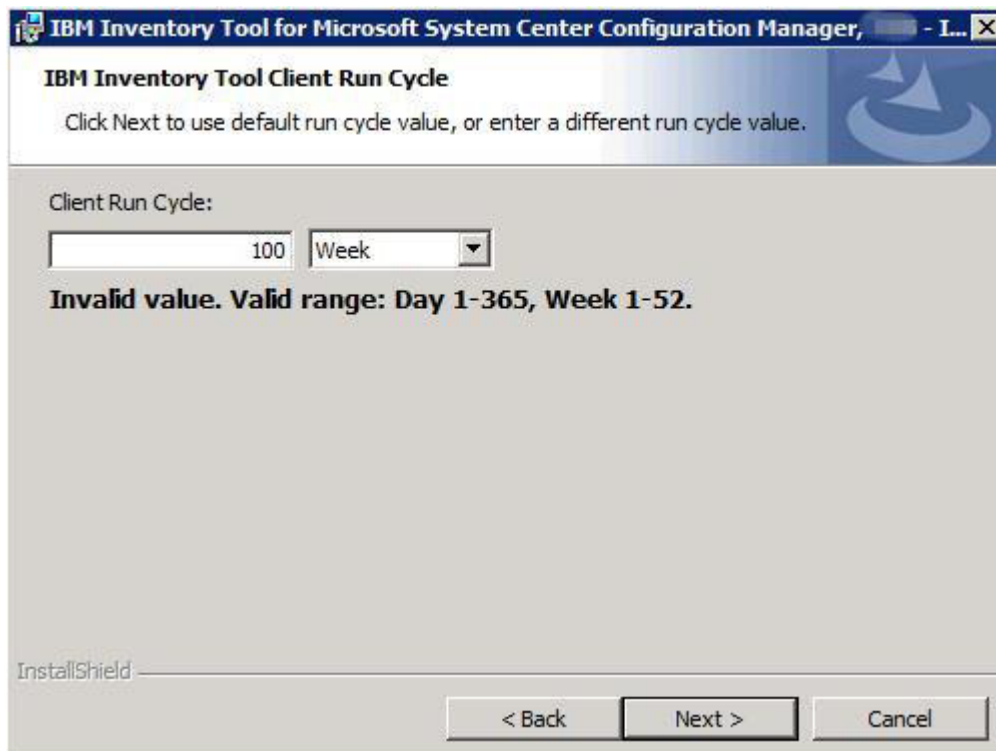


Figure 8. Example of invalid value for Week

9. On the Ready to Install the Program page, click **Install** to begin the installation. If you want to review or change any of your installation settings, either click **Back** to change them, or click **Cancel** to exit the wizard.

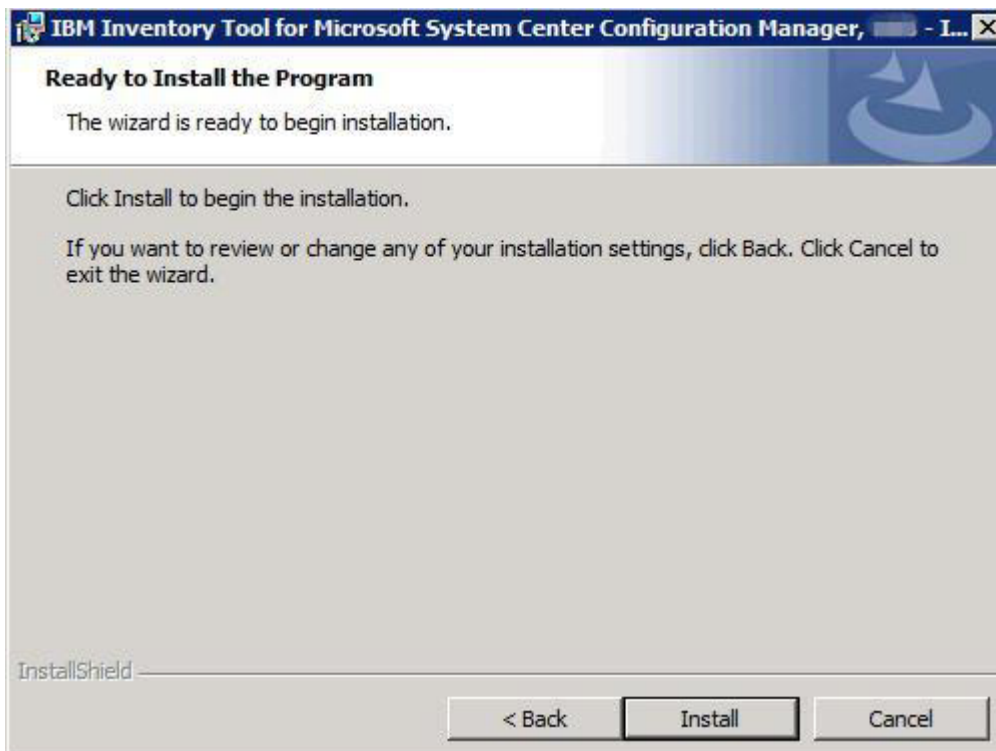


Figure 9. Ready to install the program page



Figure 10. Installation progress being depicted

10. When the installation is complete, the InstallShield Wizard Completed page opens. Click **Finish** to exit the wizard.

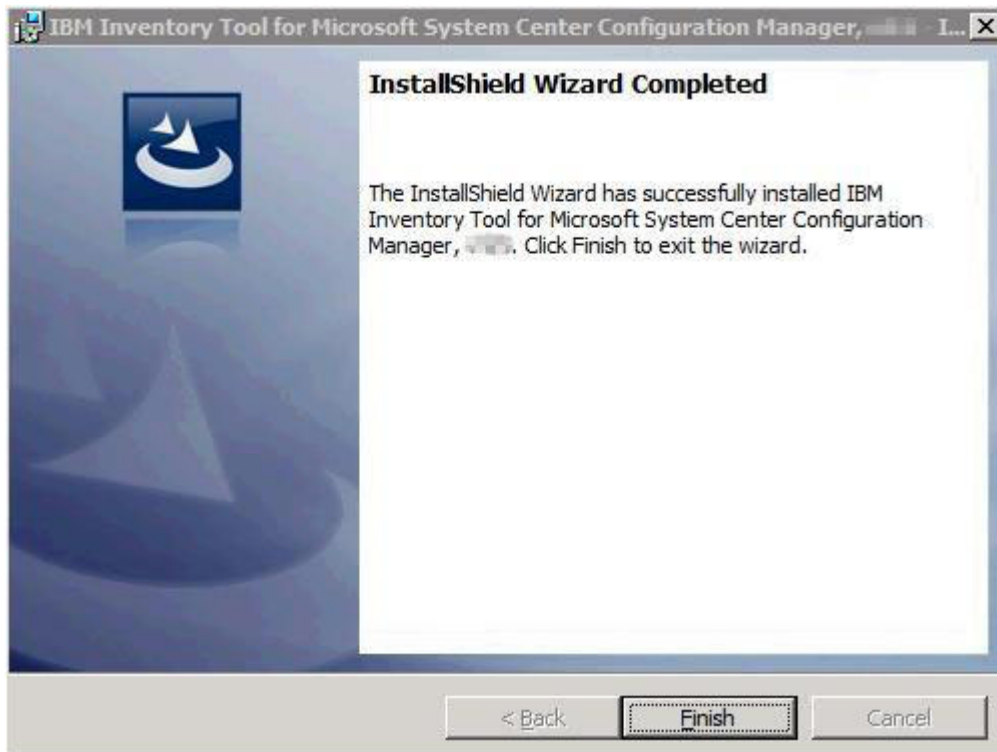


Figure 11. InstallShield Wizard Completed

Uninstalling the IBM Inventory Tool

There are four methods for uninstalling the IBM Inventory Tool for Microsoft System Center Configuration Manager, v5.0.

To uninstall IBM Inventory Tool use one of the following methods.

- Uninstall by using **Add or Remove Programs**. For the Windows Server 2008 operating system, you can use **Programs and features** to uninstall.
- Select the **Remove** option for IBM Inventory Tool for Microsoft System Center Configuration Manager, v5.0 Installer (.exe file).
- Select the **Remove** option using IBM Integrated Installer (.exe file).
- Select **Uninstall** from the **Start** menu.

Chapter 3. Working with IBM Inventory Tool and System Center Configuration Manager 2007

The topics in this section describe how IBM Inventory Tool and Microsoft System Center Configuration Manager 2007 work together.

Deploy the IBM Inventory Tool Client Package from the Microsoft System Center Configuration Manager server to Microsoft System Center Configuration Manager client

This topic describes how to deploy an IBM Inventory Tool Client package from the SCCM server to the SCCM client.

About this task

The IBM Inventory Tool Client package contains the file IBM Inventory Tool Client Setup.msi, which is used to install IBM Inventory Tool Client to the target machine.

Procedure

1. Open the SCCM console.
2. Expand **Software Distribution > Packages > IBM Inventory Tool Client** and then right-click **IBM Inventory Tool Client**.

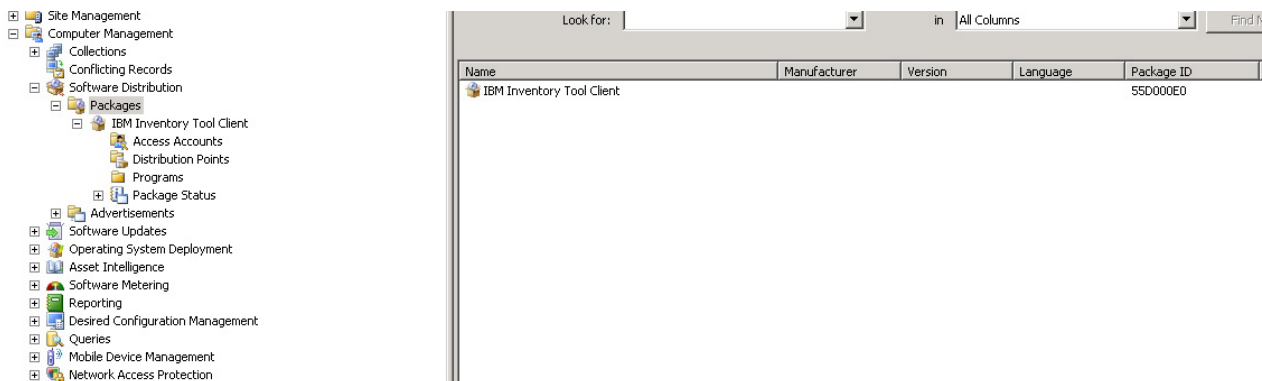


Figure 12. IBM Inventory Tool Client package

3. Click **Distribute** and then select **Software**.

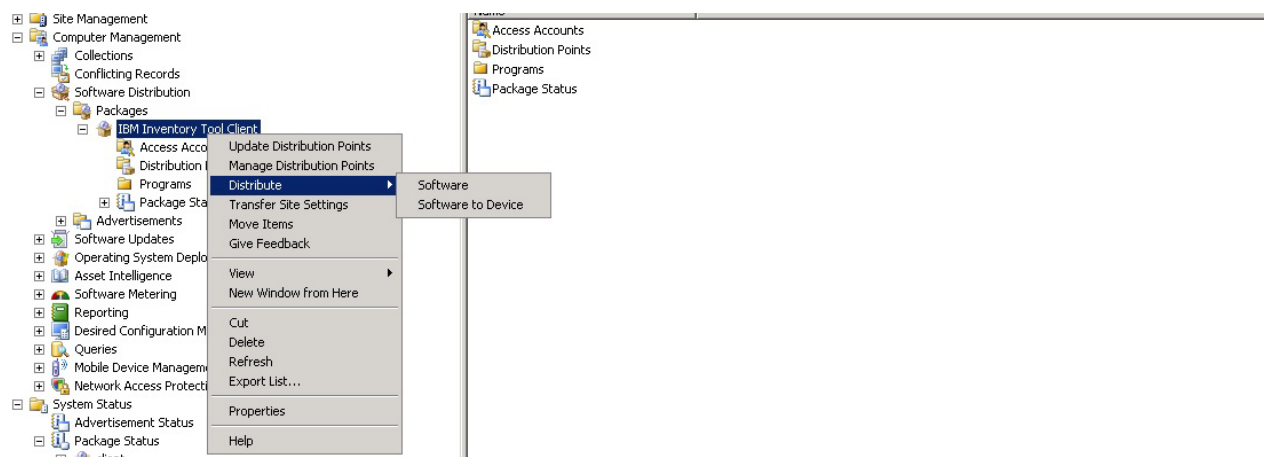


Figure 13. Distribute IBM Inventory Tool Client package

4. On the Welcome page, click **Next** to distribute the software from the package.

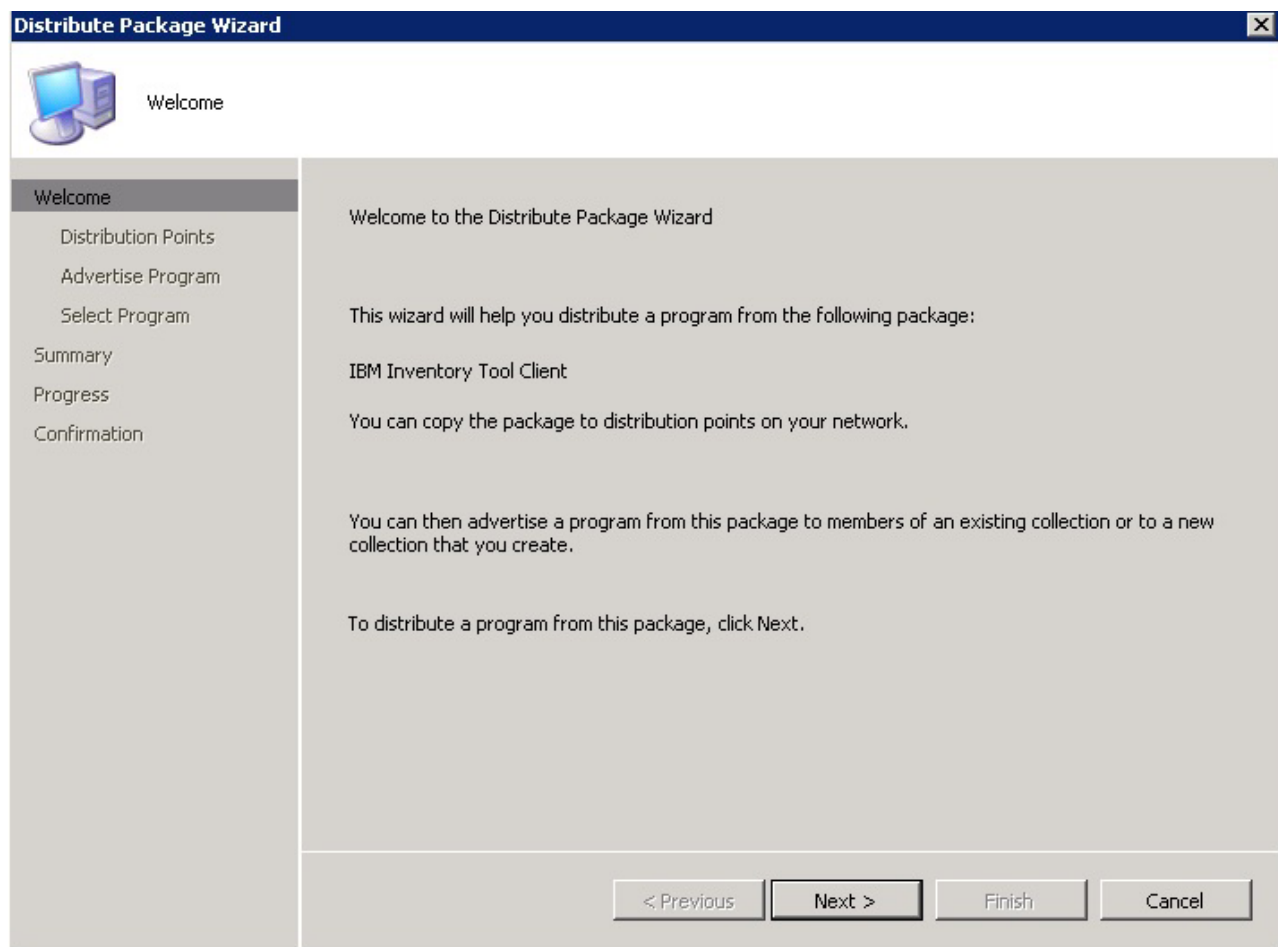


Figure 14. Distribute Package Wizard welcome page

5. On the Distribution Points page, select the distribution points where the client accesses this package, and then click **Next**.

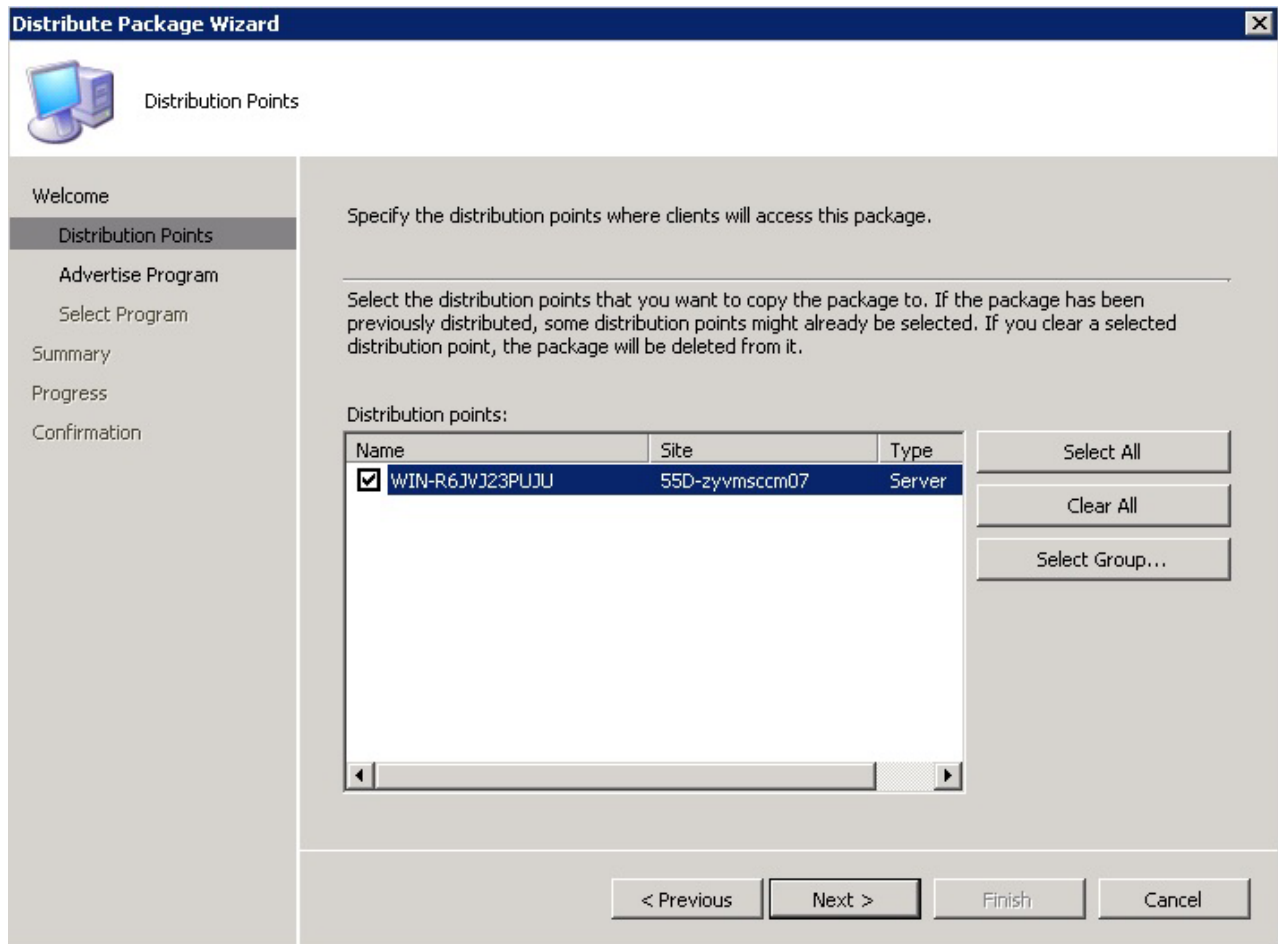


Figure 15. Distribution points

6. On the Advertise Program page, specify whether to advertise a program from this package to client resources. Select **Yes** and click **Next**.

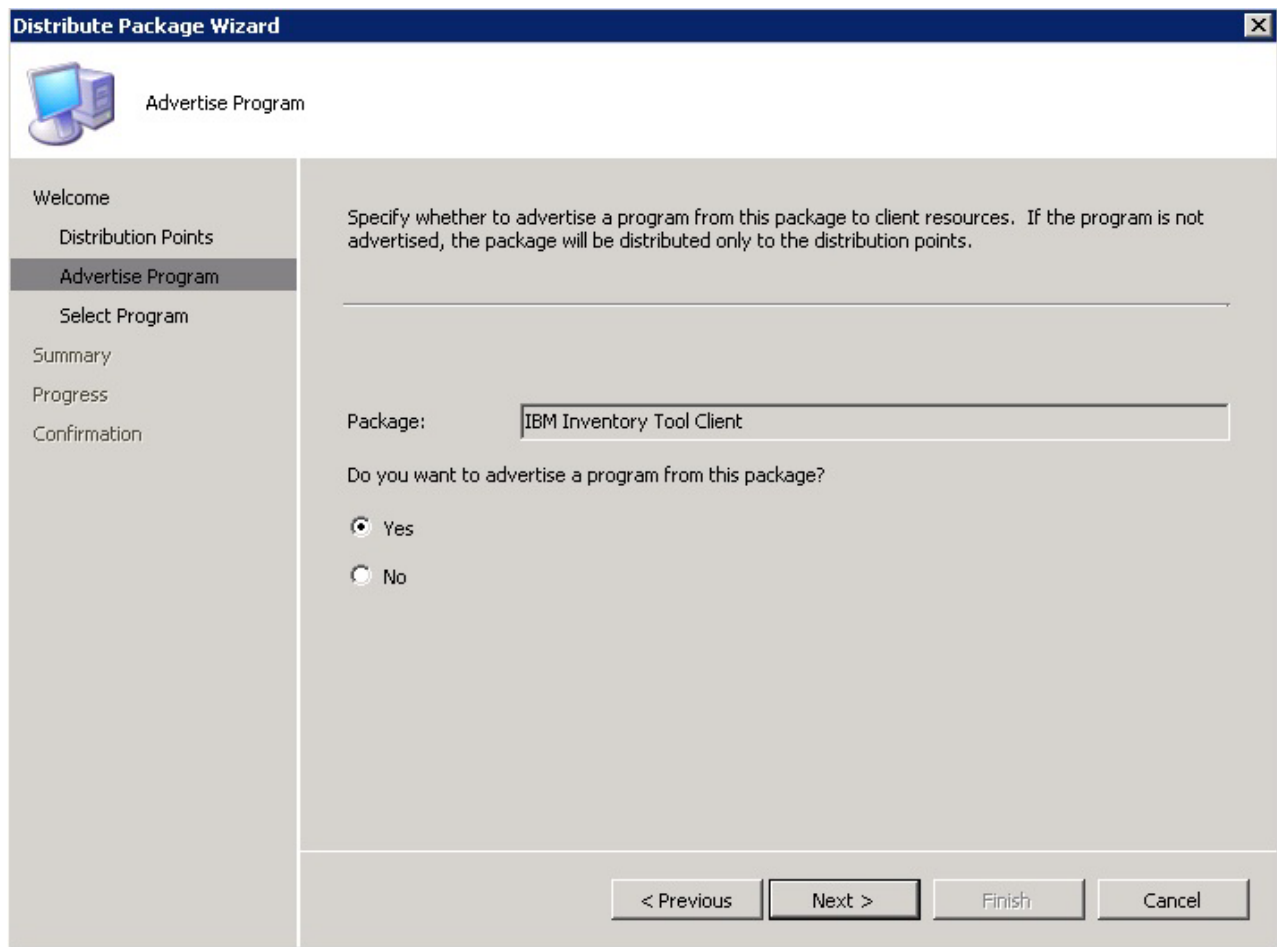


Figure 16. Advertise Program page

7. On the Select Program page, select the program to advertise to members of a collection, and then click **Next**.

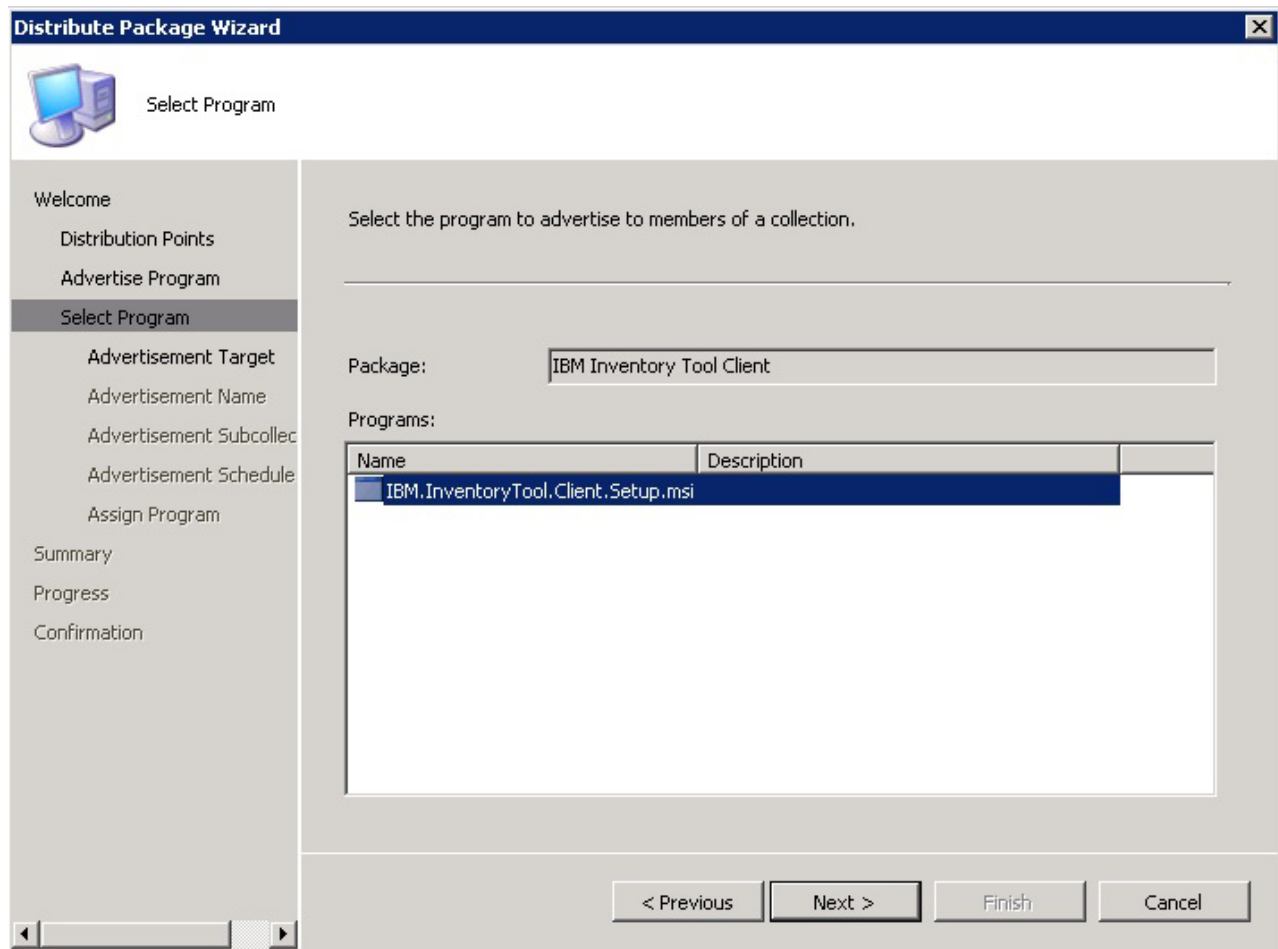


Figure 17. Select program page

8. On the Advertisement Target page, select the existing collection that you want to advertise, and then click **Next**.

Figure 18. Advertisement Target page

9. On the Advertisement Name page, choose whether to modify the following information, and when you are finished, click **Next**.

Name Enter a different name if you do not want to use the default name that is provided.

Comment

Enter a detailed description that will help you to identify the advertisement.

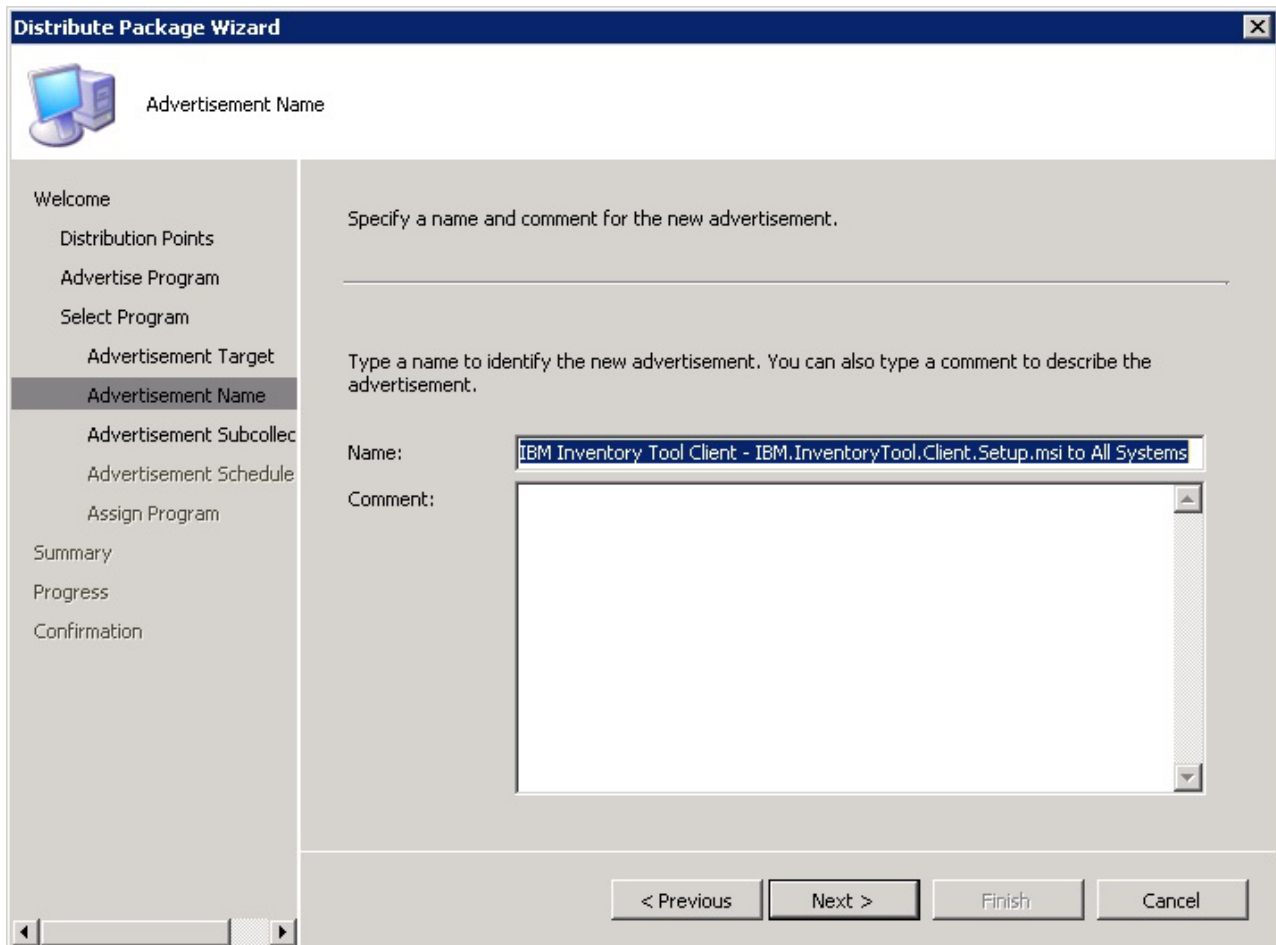


Figure 19. Advertisement Name page

10. On the Advertisement Subcollection page, select whether the advertisement should be made available to the members of the collection only or to the members of the collection and its subcollections.

Distribute Package Wizard

Advertisement Subcollection

Welcome

Distribution Points

Advertise Program

Select Program

Advertisement Target

Advertisement Name

Advertisement Subcollection

Advertisement Schedule

Assign Program

Summary

Progress

Confirmation

Specify whether the advertisement should be made available to subcollections.

Collection: All Systems

If this collection has links to other collections (or will in the future), you can advertise the program to members of those collections.

☐ Advertise the program only to members of the specified collection

☒ Advertise the program to members of the collection and its subcollections

The program will be advertised to the following collections:

All Systems

< Previous Next > Finish Cancel

Figure 20. Advertisement Subcollection page

11. On the Advertisement Schedule page, either select or modify the following options, and click **Next**.
 - Select a date and time for the software to be advertised.
 - Select whether this advertisement should expire.
 - Select whether the client can download content from an unprotected distribution point and run locally.

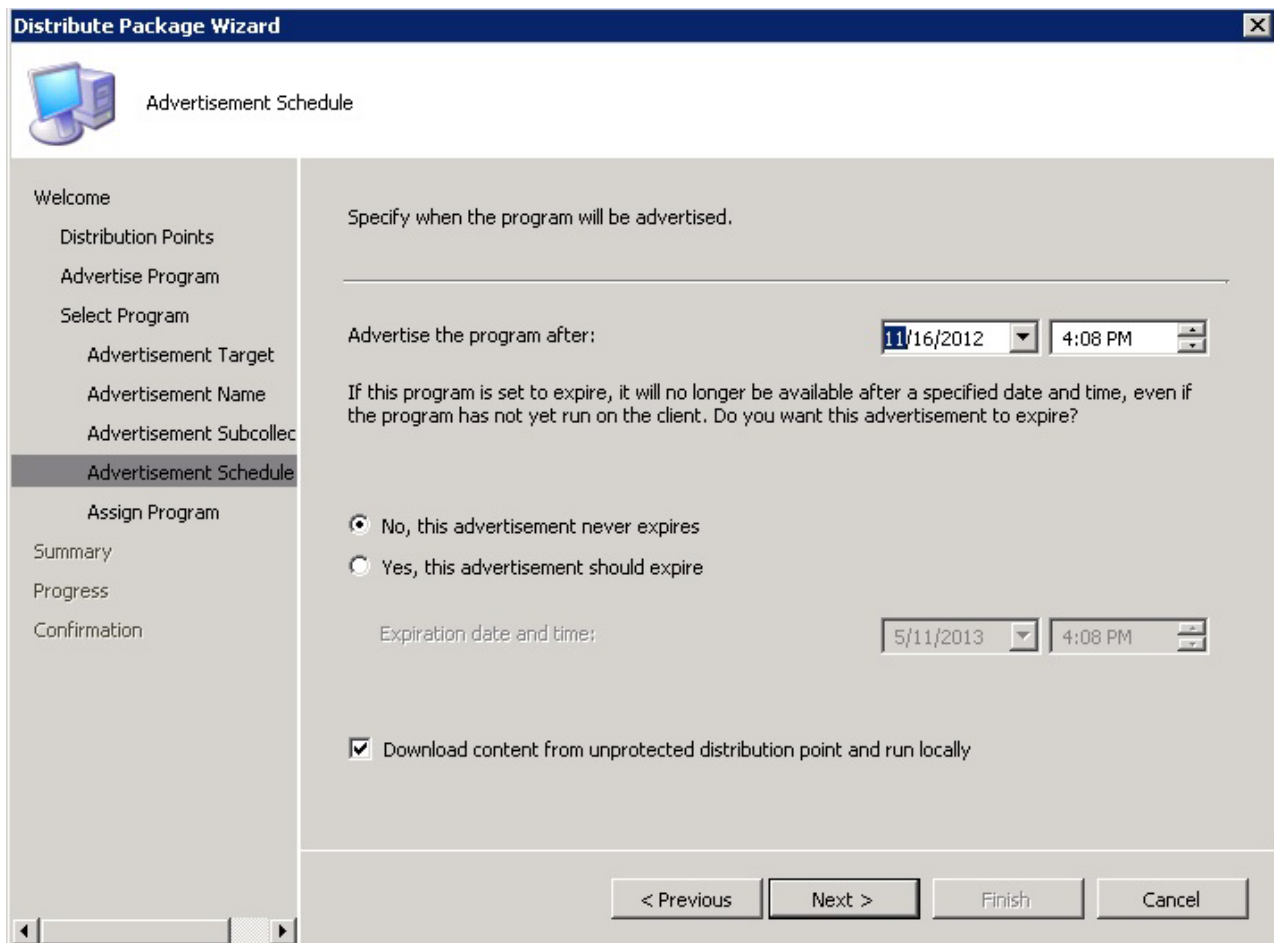


Figure 21. Advertisement Schedule page

12. On the Assign Program page, make the following selections and click **Next**.
 - Select whether to assign to the program.
 - Enable wake on LAN if it is urgent.
 - Select whether to ignore maintenance windows when running the program.
 - Select whether to allow a system restart outside maintenance windows.

Figure 22. Assign Program page

13. On the Wizard Completed page, you can review the options that have been selected, then click **Close** to finish the distribution.

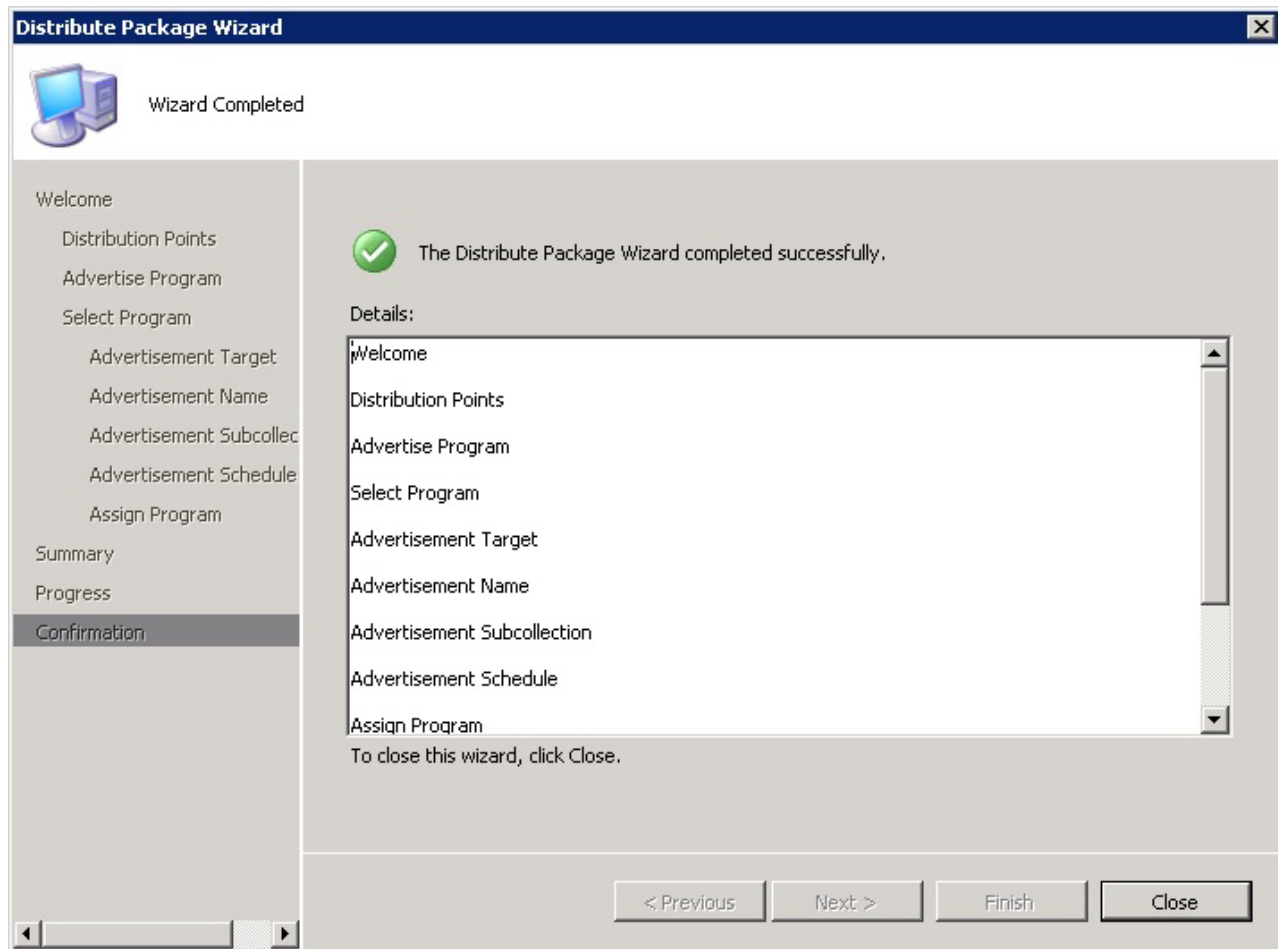


Figure 23. Wizard Completed page

Look for hardware inventory of clients from the Microsoft System Center Configuration Manager server

When IBM Inventory Tool Client has been installed on the client, it can be run periodically to retrieve a hardware inventory from the Microsoft System Center Configuration Manager server.

About this task

The following procedure describes how to look for hardware inventory of clients from SCCM server,

Procedure

1. Open the SCCM console.
2. Expand **Computer Management > Collections > ALL Systems**.

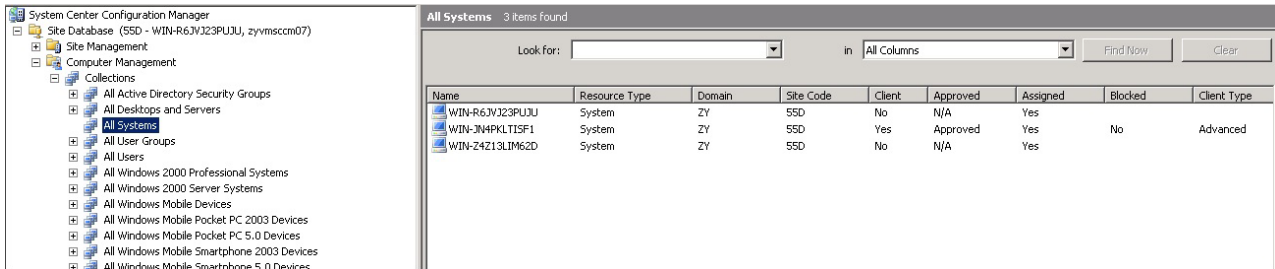


Figure 24. Select client

3. Right-click the device on the right panel that you want to inventory. Select **Start** and then click **Resource Explorer**.

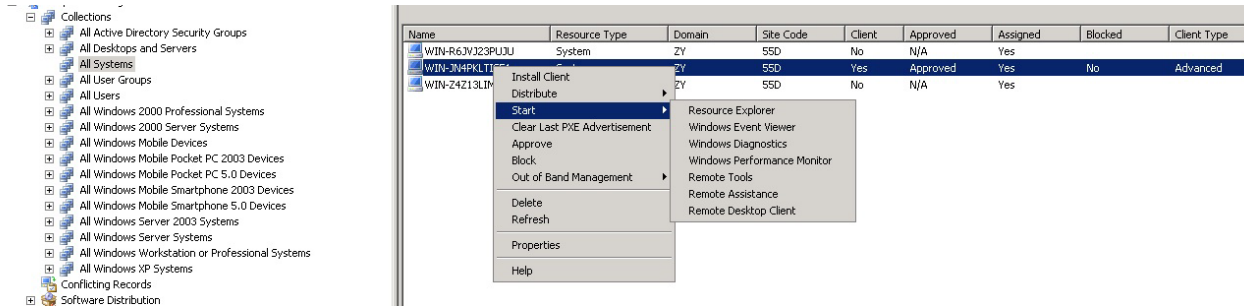


Figure 25. Start Resource Explorer wizard

4. Expand **Resource Explorer > Hardware**, and then select the resource beginning with IBM. The inventory information you requested is shown on the right panel.

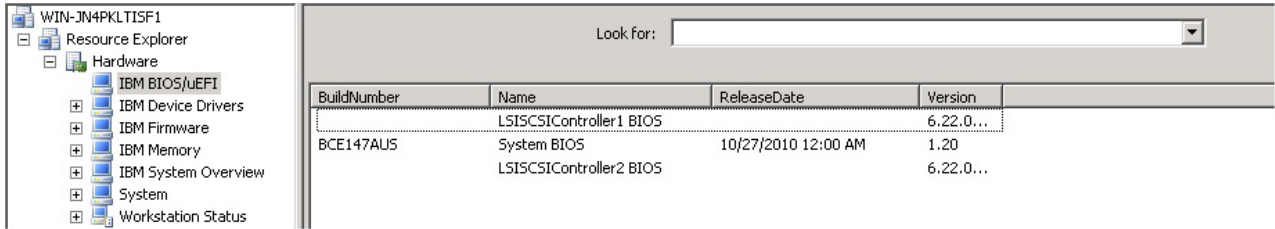


Figure 26. Look for hardware inventory

Chapter 4. Working with IBM Inventory Tool and Microsoft System Center Configuration Manager 2012

The topics in this section describe how IBM Inventory Tool and Microsoft System Center Configuration Manager 2012 work together.

Deploy the IBM Inventory Tool Client Package from the Microsoft System Center Configuration Manager server to Microsoft System Center Configuration Manager client

The IBM Inventory Tool Client package contains the file IBM Inventory Tool Client Setup.msi, which is used to install IBM Inventory Tool Client to the target machine.

About this task

The following procedure describes how to deploy an IBM Inventory Tool Client package from SCCM server to SCCM client.

Procedure

1. Open the SCCM console.
2. Expand **Software Library > Overview > Application management > Packages**.

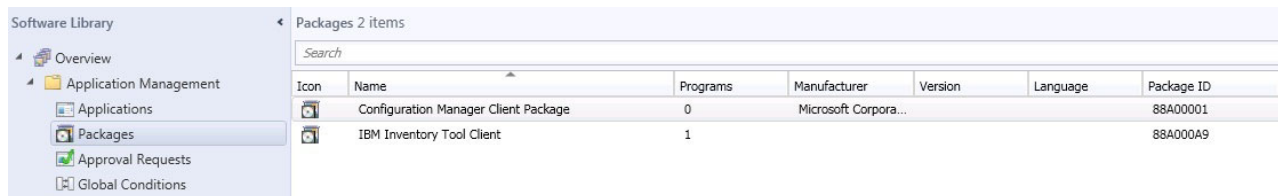


Figure 27. IBM Inventory ToolClient package

3. On the right panel, right-click **IBM Inventory Tool Client**, and select **Deploy**.

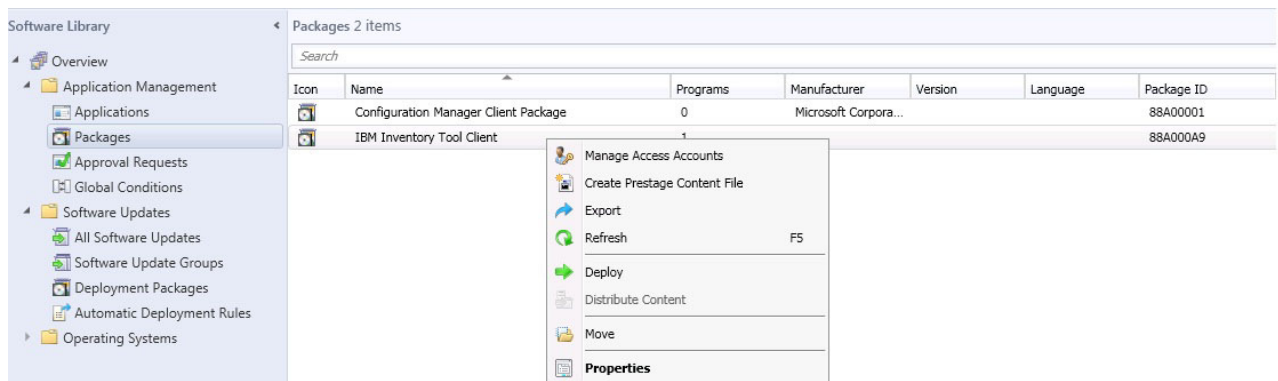


Figure 28. Deploy IBM Inventory Tool package

4. On the General page, enter the following information, and click **Next**.

Collection

Click **Browse**, and select the collection to be deployed.

Comments

Enter a detailed description that will help you to identify the deployment.

Deploy Software Wizard

General

Specify general information for this deployment

Software: ry Tool Client (IBM.InventoryTool.Client.Setup.msi) Browse...

Collection: All Systems Browse...

☐ Use default distribution point groups associated to this collection

☐ Automatically distribute content for dependencies

Comments (optional):

< Previous Next > Summary Cancel

Figure 29. General page

5. On the Content page, click **Add** to add distribution points or distribution point groups, and click **Next**.

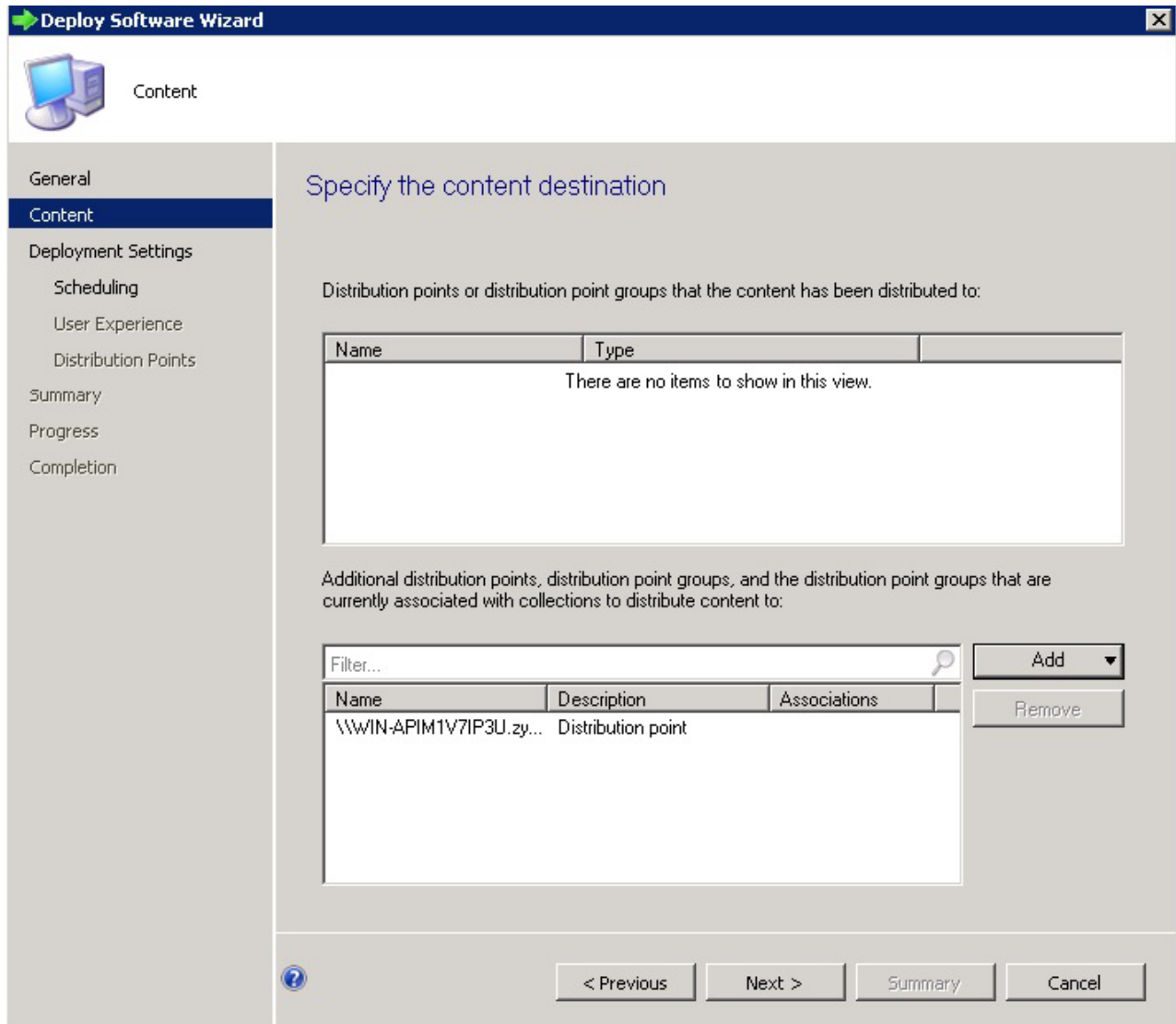


Figure 30. Content page

6. On the Deployment Settings page, specify the settings that control how the software is deployed and click **Next**.

Deploy Software Wizard

Deployment Settings

General
Content
Deployment Settings
Scheduling
User Experience
Distribution Points
Summary
Progress
Completion

Specify settings to control how this software is deployed

Action:

Purpose:

☐ Deploy automatically according to schedule whether or not a user is logged on

☐ Send wake-up packets

< Previous Next > Summary Cancel

Figure 31. Deployment Settings page

7. On the Scheduling page, configure the deployment and assignment schedule if necessary. Select **As soon as possible** if you want to deploy the inventory tool client immediately.

Deploy Software Wizard

Scheduling

General
Content
Deployment Settings
Scheduling
User Experience
Distribution Points
Summary
Progress
Completion

Specify the schedule for this deployment

This program will be available as soon as it has been distributed to the content servers unless it is scheduled for a later time below. For required applications, specify the assignment schedule.

☐ Schedule when this deployment will become available:
 11/10/2012 6:47 PM ☐ UTC

☐ Schedule when this deployment will expire:
 11/10/2012 6:47 PM ☐ UTC

Assignment schedule: New... Edit... Delete

As soon as possible

Rerun behavior: Rerun if failed previous attempt

? < Previous Next > Summary Cancel

Figure 32. Scheduling page

8. On the User Experience page, enable the checkbox if needed. (optional)

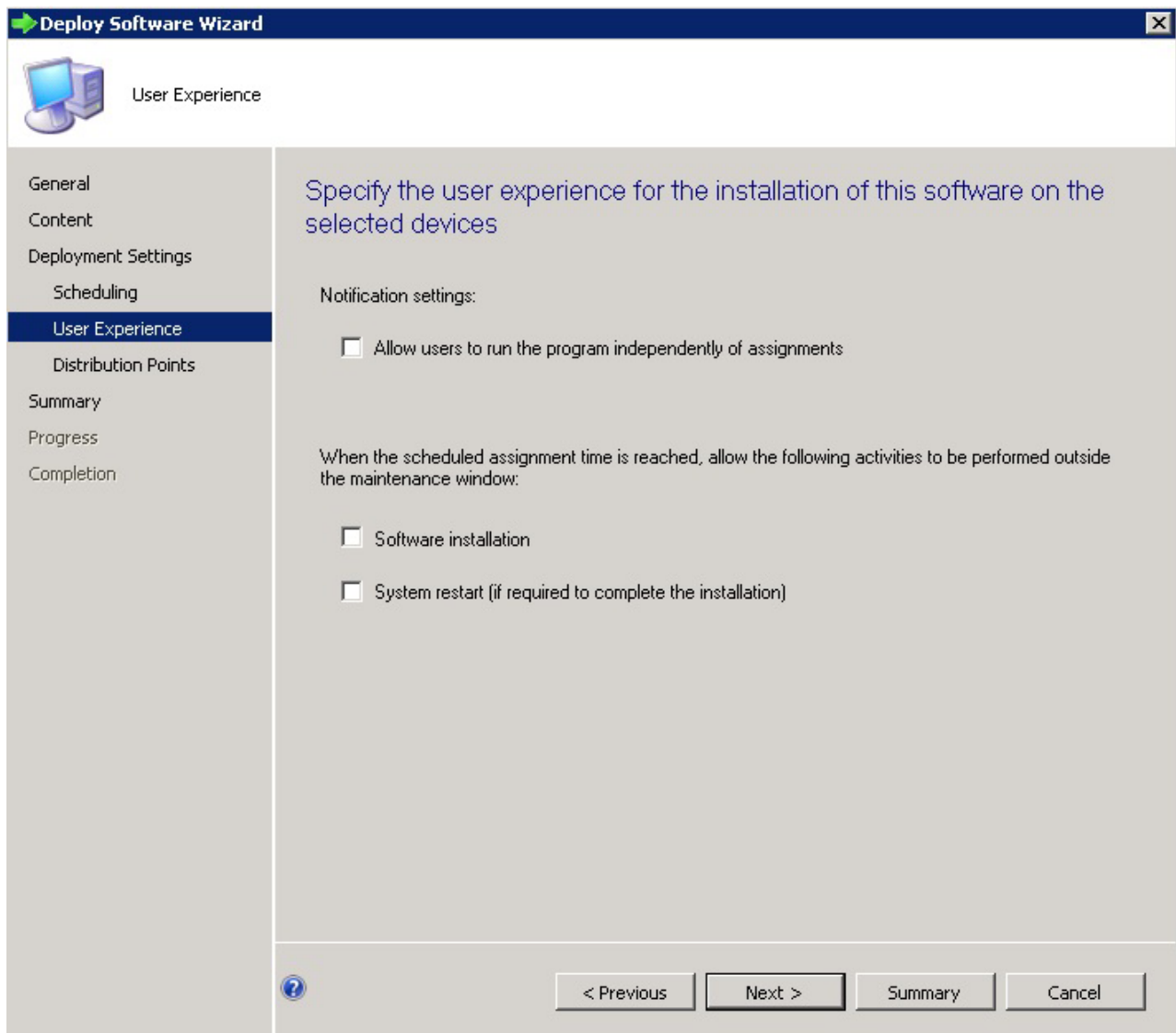


Figure 33. User Experience page

9. On the Summary page, review the configuration settings, and click **Next** to begin the deployment process.

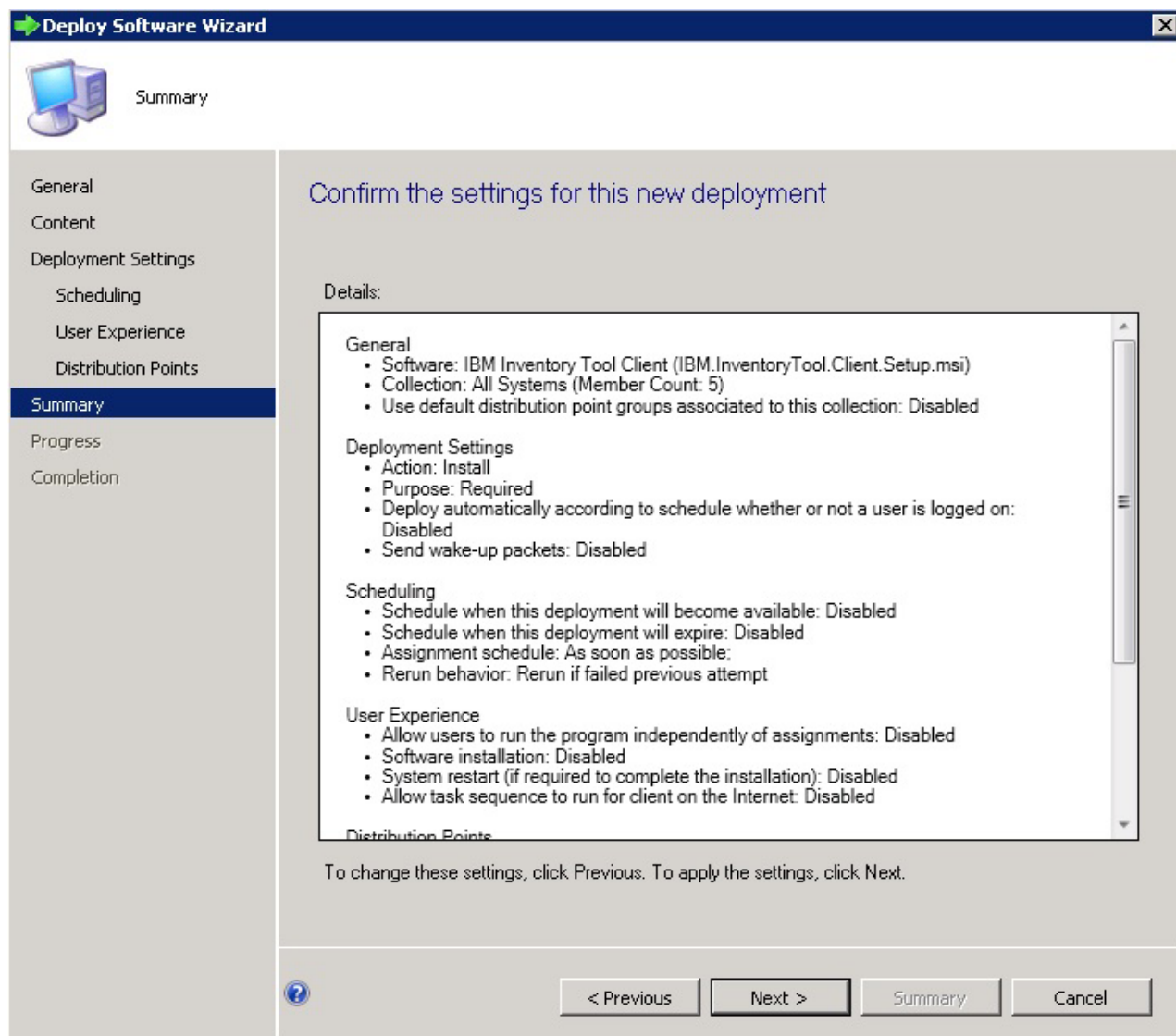


Figure 34. Summary page

10. On the Completion page, click **Close** to finish the deployment.

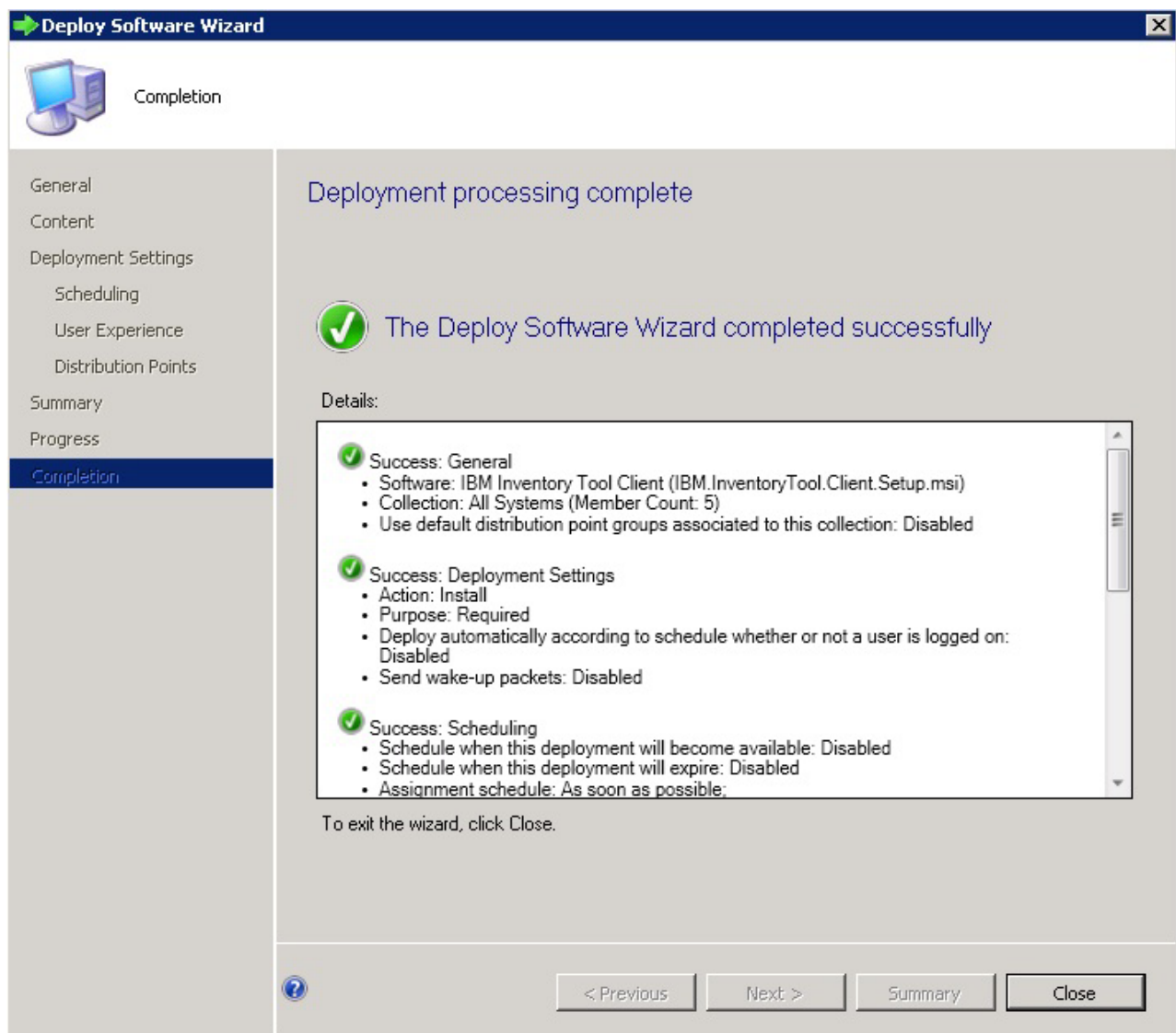


Figure 35. Completion page

View hardware inventory of clients from the Microsoft System Center Configuration Manager server

When IBM Inventory Tool Client has been installed, it can be run periodically to retrieve a hardware inventory from the Microsoft System Center Configuration Manager server.

About this task

The following procedure describes how to view a hardware inventory of clients from the SCCM server.

Procedure

1. Open the SCCM console.
2. Expand **Assets and Compliance** > **Overview** > **Devices**.

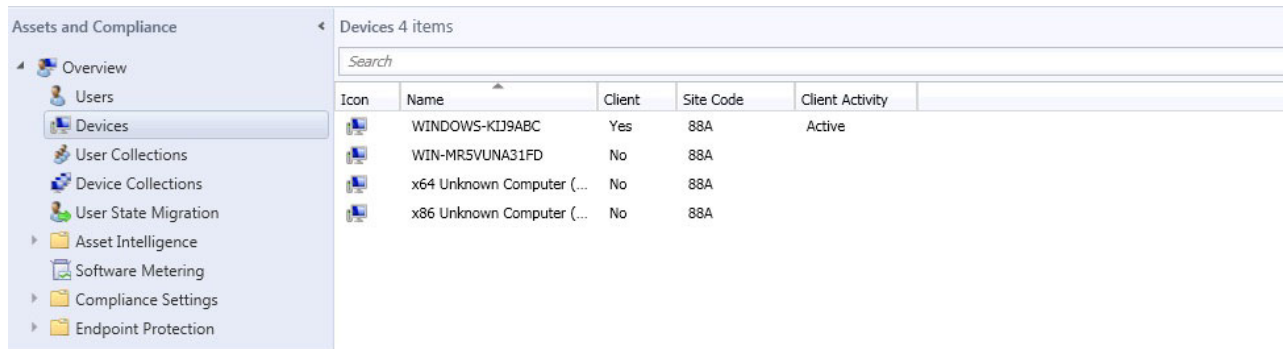


Figure 36. Select client

3. Right-click the devices on the right panel that you want to inventory. Select **Start**, and then click **Resource Explorer**.

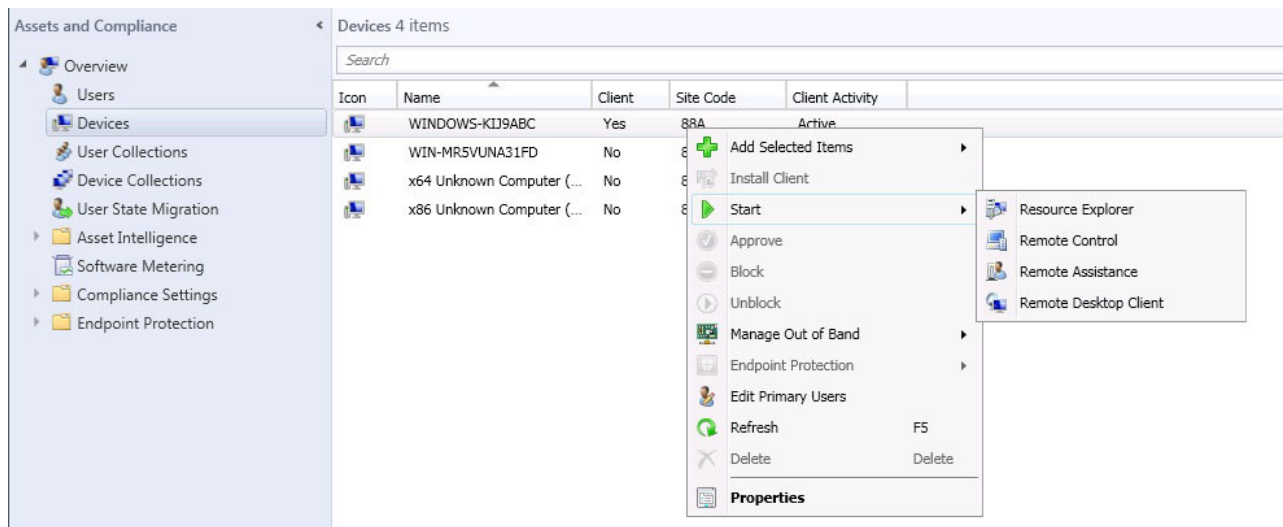


Figure 37. Start Resource Explorer

4. Expand **Resource Explorer > Hardware** and then select the resource beginning with IBM. The inventory information is shown on the right panel.

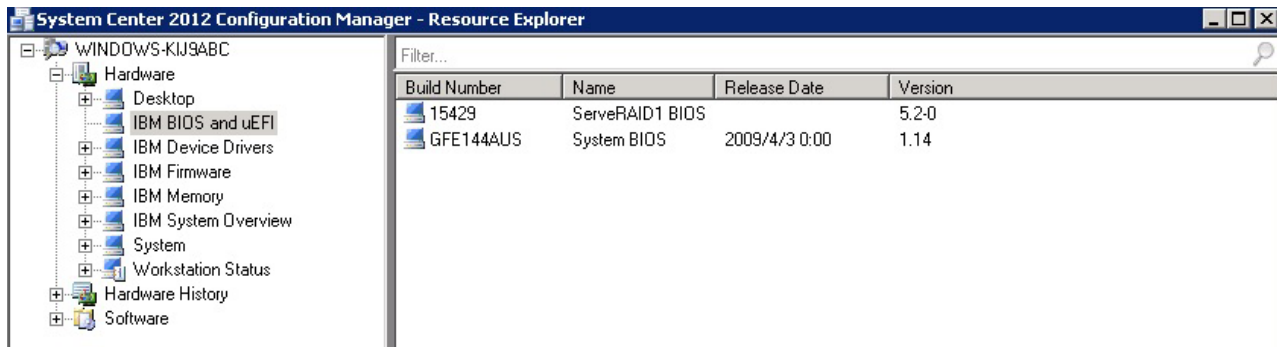


Figure 38. View hardware inventory

Chapter 5. Supported hardware and software

This section describes the hardware and software that is supported by IBM Inventory Tool for Microsoft System Center Configuration Manager, v5.0.

Supported Microsoft System Center products

IBM Inventory Tool for Microsoft System Center Configuration Manager, v5.0 supports the following Microsoft System Center products:

- Microsoft System Center Configuration Manager 2007 R2/R3
- Microsoft System Center Configuration Manager 2007 SP2
- Microsoft System Center Configuration Manager 2012
- Microsoft System Center Configuration Manager 2012 SP1
- Microsoft System Center Configuration Manager 2012 R2

Supported client systems

The supported client systems for IBM Inventory Tool are listed in the following table.

Supported systems

Table 2. Supported Systems

Product family name	Machine type
IBM BladeCenter HS12	8014, 8028, 1916
IBM BladeCenter HS21	1885, 8853
IBM BladeCenter HS21 XM	7995, 1915
IBM BladeCenter HS22	7870, 1936, 7809, 1911
IBM BladeCenter HS22V	1949, 7871
IBM BladeCenter HS23	7875, 1929
IBM BladeCenter HS23E	8038, 8039
IBM BladeCenter HX5	7872, 7873, 1909, 1910
IBM BladeCenter LS21/LS41	7971, 7972
IBM BladeCenter LS22/LS42	7901, 7902
IBM Flex System™ x220 Compute Node	7906, 2585
IBM Flex System x222 Computer Node	7916
IBM Flex System x240 Compute Node	8737, 8738, 7863
IBM Flex System x440 Compute Node	7917
IBM NeXtScale Node	5455
IBM Smart Analytics System	7949
IBM System x® iDataPlex® dx320 server	6388, 7326
IBM System x iDataPlex dx360 M2 server	7321, 6380, 7323
IBM System x iDataPlex dx360 M3	6391
IBM System x iDataPlex dx360 M4	7912, 7913

Table 2. Supported Systems (continued)

Product family name	Machine type
IBM System x iDataPlex Direct Water Cooled dx360 M4 server	7918, 7919
IBM System x3100 M4	2582
IBM System x3200	4362, 4363
IBM System x3200 M2	4367, 4368
IBM System x3200 M3	7327, 7328
IBM System x3250 M2	4190, 4191, 4194, 7657
IBM System x3250 M3	4251, 4252, 4261
IBM System x3250 M4	2583
IBM System x3250 M5	5458
IBM System x3300 M4	7382
IBM System x3400	7973, 7974, 7975, 7976
IBM System x3400 M2	7836, 7837
IBM System x3400 M3	7378, 7379
IBM System x3500	7977
IBM System x3500 M2	7839
IBM System x3500 M3	7380
IBM System x3500 M4	7383
IBM System x3530 M4	7160
IBM System x3550	7978, 1913
IBM System x3550 M2	4198, 7946
IBM System x3550 M3	4254, 7944
IBM System x3550 M4	7914
IBM System x3620 M3	7376
IBM System x3630 M3	7377
IBM System x3630 M4	7158
IBM System x3650	7979, 1914
IBM System x3650 M2	7947, 4199
IBM System x3650 M3	4255, 7945, 5454
IBM System x3650 M4	7915
IBM System x3650 M4 HD	5460
IBM System x3690 X5	7147, 7148, 7149, 7192
IBM System x3755 M3	7164
IBM System x3850 M2	7141, 7144, 7233, 7234
IBM System x3850 X5	7145, 7146, 7191, 7143
IBM System x3850 X6	3837
IBM System x3950 M2	7141, 7144, 7233, 7234
IBM System x3950 X5	7143, 7145, 7146, 7191

Supported operating systems

The following Windows operating systems are supported on client machines:

- Windows Server 2003 SP2/R2
- Windows Server 2003 SP2/R2 x64
- Windows Server 2008 SP1/SP2
- Windows Server 2008 SP1/SP2 x64
- Windows Server 2008 SP1/R2 SP1
- Windows Server 2012
- Windows(tm) Server 2012 R2

Required software on client machines

Microsoft .NET Framework Version 2.0 is required on client machines.

Appendix A. Troubleshooting

This section provides information to help you with troubleshooting.

IBM Inventory Tool cannot be installed

.NET Framework 2.0, 3.0 or 3.5 must be installed on the SCCM server as a prerequisite for the IBM Inventory Tool installation.

Issue: IBM Inventory Tool cannot install.

Possible solution:

IBM Inventory Tool needs .NET Framework 3.5 installed on the SCCM server or client. Make sure it is already installed on the SCCM server and client system.

Appendix B. Accessibility features for IBM Inventory Tool

Accessibility features help users who have a physical disability, such as restricted mobility or limited vision, to use information technology products successfully.

IBM strives to provide products with usable access for everyone, regardless of age or ability.

IBM Inventory Tool for Microsoft System Center Configuration Manager, v5.0 supports the accessibility features of the system-management software in which they are integrated. Refer to your system-management software documentation for specific information about accessibility features and keyboard navigation.

Tip: The IBM Inventory Tool topic collection and its related publications are accessibility-enabled for the IBM Home Page Reader. You can operate all features using the keyboard instead of the mouse.

You can view the publications for IBM Inventory Tool for Microsoft System Center Configuration Manager, v5.0 in Adobe Portable Document Format (PDF) using the Adobe Acrobat Reader. You can access the PDFs from the IBM Inventory Tool for Microsoft System Center Configuration Manager, v5.0 download site.

IBM and accessibility

See the Human Ability and Accessibility Center Website for more information about the commitment that IBM has to accessibility.

Notices

This information was developed for products and services offered in the U.S.A. IBM may not offer the products, services, or features discussed in this document in other countries.

Consult your local IBM representative for information on the products and services currently available in your area. Any reference to an IBM product, program, or service is not intended to state or imply that only that IBM product, program, or service may be used. Any functionally equivalent product, program, or service that does not infringe any IBM intellectual property right may be used instead. However, it is the user's responsibility to evaluate and verify the operation of any non-IBM product, program, or service.

IBM may have patents or pending patent applications covering subject matter described in this document. The furnishing of this document does not grant you any license to these patents. You can send license inquiries, in writing, to:

IBM Director of Licensing
IBM Corporation
North Castle Drive
Armonk, NY 10504-1785
U.S.A.

INTERNATIONAL BUSINESS MACHINES CORPORATION PROVIDES THIS PUBLICATION "AS IS" WITHOUT WARRANTY OF ANY KIND, EITHER EXPRESS OR IMPLIED, INCLUDING, BUT NOT LIMITED TO, THE IMPLIED WARRANTIES OF NON-INFRINGEMENT, MERCHANTABILITY OR FITNESS FOR A PARTICULAR PURPOSE. Some states do not allow disclaimer of express or implied warranties in certain transactions, therefore, this statement may not apply to you.

This information could include technical inaccuracies or typographical errors. Changes are periodically made to the information herein; these changes will be incorporated in new editions of the publication. IBM may make improvements and/or changes in the product(s) and/or the program(s) described in this publication at any time without notice.

Any references in this information to non-IBM Web sites are provided for convenience only and do not in any manner serve as an endorsement of those Web sites. The materials at those Web sites are not part of the materials for this IBM product, and use of those Web sites is at your own risk.

IBM may use or distribute any of the information you supply in any way it believes appropriate without incurring any obligation to you.

Trademarks

IBM, the IBM logo, and `ibm.com`[®] are trademarks or registered trademarks of International Business Machines Corporation in the United States, other countries, or both. If these and other IBM trademarked terms are marked on their first occurrence in this information with a trademark symbol ([®] or [™]), these symbols indicate U.S. registered or common law trademarks owned by IBM at the time this information was published.

Such trademarks may also be registered or common law trademarks in other countries. A current list of IBM trademarks is available on the web at Copyright and trademark information at <http://www.ibm.com/legal/copytrade.shtml>.

Adobe and PostScript are either registered trademarks or trademarks of Adobe Systems Incorporated in the United States, other countries, or both.

Cell Broadband Engine is a trademark of Sony Computer Entertainment, Inc., in the United States, other countries, or both and is used under license therefrom.

Intel, Intel Xeon, Itanium, and Pentium are trademarks or registered trademarks of Intel Corporation or its subsidiaries in the United States and other countries.

Java[™] and all Java-based trademarks are trademarks of Sun Microsystems, Inc., in the United States, other countries, or both.

Linux is a registered trademark of Linus Torvalds in the United States, other countries, or both.

Microsoft, Windows, and Windows NT are trademarks of Microsoft Corporation in the United States, other countries, or both.

UNIX is a registered trademark of The Open Group in the United States and other countries.

VMware, vCenter, and vSphere are trademarks of VMware Corporation in the United States, other countries, or both.

Other company, product, or service names may be trademarks or service marks of others.

Important notes

View important assumptions about terminology and claims.

Processor speed indicates the internal clock speed of the microprocessor; other factors also affect application performance.

CD or DVD drive speed is the variable read rate. Actual speeds vary and are often less than the possible maximum.

When referring to processor storage, real and virtual storage, or channel volume, KB stands for 1024 bytes, MB stands for 1,048,576 bytes, and GB stands for 1,073,741,824 bytes.

When referring to hard disk drive capacity or communications volume, MB stands for 1,000,000 bytes, and GB stands for 1,000,000,000 bytes. Total user-accessible capacity can vary depending on operating environments.

Maximum internal hard disk drive capacities assume the replacement of any standard hard disk drives and population of all hard disk drive bays with the largest currently supported drives that are available from IBM.

Maximum memory might require replacement of the standard memory with an optional memory module.

IBM makes no representation or warranties regarding non-IBM products and services that are ServerProven, including but not limited to the implied warranties of merchantability and fitness for a particular purpose. These products are offered and warranted solely by third parties.

IBM makes no representations or warranties with respect to non-IBM products. Support (if any) for the non-IBM products is provided by the third party, not IBM.

Some software might differ from its retail version (if available) and might not include user manuals or all program functionality.

Readers' Comments — We'd Like to Hear from You

IBM System x
IBM Inventory Tool for
Microsoft System Center Configuration Manager
User's Guide
Version 5.0

We appreciate your comments about this publication. Please comment on specific errors or omissions, accuracy, organization, subject matter, or completeness of this book. The comments you send should pertain to only the information in this manual or product and the way in which the information is presented.

For technical questions and information about products and prices, please contact your IBM branch office, your IBM business partner, or your authorized remarketer.

When you send comments to IBM, you grant IBM a nonexclusive right to use or distribute your comments in any way it believes appropriate without incurring any obligation to you. IBM or any other organizations will only use the personal information that you supply to contact you about the issues that you state on this form.

Comments:

Thank you for your support.

Send your comments to the address on the reverse side of this form.

If you would like a response from IBM, please fill in the following information:

Name

Address

Company or Organization

Phone No.

Email address



Cut or Fold
Along Line

Fold and Tape

Please do not staple

Fold and Tape



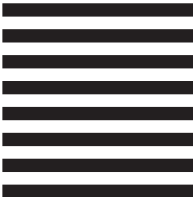
NO POSTAGE
NECESSARY
IF MAILED IN THE
UNITED STATES

BUSINESS REPLY MAIL

FIRST-CLASS MAIL PERMIT NO. 40 ARMONK, NEW YORK

POSTAGE WILL BE PAID BY ADDRESSEE

International
Business Machines Corporation
PO Box 12195
Research Triangle Park
NC
U.S.A. 27709-9990



Fold and Tape

Please do not staple

Fold and Tape

Cut or Fold
Along Line



Printed in USA