

IBM System x



# IBM Integrated Installer for Microsoft System Center User's Guide

*Version 5.0*



IBM System x



# IBM Integrated Installer for Microsoft System Center User's Guide

*Version 5.0*

**Note**

Before using this information and the product it supports, read the information in “Notices” on page 27.

**Edition notice**

This edition applies to version 5.0 of IBM Integrated Installer for Microsoft System Center and to all subsequent releases and modifications until otherwise indicated in new editions.

© **Copyright IBM Corporation 2012.**

US Government Users Restricted Rights – Use, duplication or disclosure restricted by GSA ADP Schedule Contract with IBM Corp.

---

# Contents

<b>Figures . . . . .</b>	<b>v</b>
--------------------------	----------

<b>About this publication . . . . .</b>	<b>vii</b>
Conventions and terminology . . . . .	vii

<b>Information resources . . . . .</b>	<b>ix</b>
PDF files . . . . .	ix
World Wide Web resources . . . . .	ix

<b>Chapter 1. IBM Integrated Installer . . . . .</b>	<b>1</b>
Computer requirements. . . . .	1

<b>Chapter 2. Installing components. . . . .</b>	<b>3</b>
Installing components by using the setup wizard . . .	3

<b>Chapter 3. Maintaining components . . . . .</b>	<b>11</b>
Changing components. . . . .	11

Repairing components. . . . .	15
Uninstalling components . . . . .	18

<b>Appendix A. Troubleshooting . . . . .</b>	<b>23</b>
--	-----------

<b>Appendix B. References . . . . .</b>	<b>25</b>
Accessibility features for IBM Integrated Installer. .	25
Accessibility . . . . .	25
Keyboard navigation . . . . .	25
Accessibility deviation. . . . .	25

<b>Notices . . . . .</b>	<b>27</b>
Trademarks . . . . .	28
Important notes . . . . .	28



---

## Figures

1. Initializing . . . . .	3	12. Add and remove Suite Components . . . . .	12
2. Language selection list . . . . .	4	13. Confirmation page . . . . .	13
3. Welcome page . . . . .	4	14. InstallShield Wizard status . . . . .	14
4. Prerequisites page. . . . .	5	15. Installation results . . . . .	15
5. Select the components to install . . . . .	6	16. Repair Suite Components page . . . . .	16
6. Confirmation of components . . . . .	7	17. Repair Confirmation page. . . . .	17
7. InstallShield Wizard status . . . . .	8	18. Installation wizard . . . . .	17
8. Message asking if you want to cancel the installation . . . . .	9	19. Repair results . . . . .	18
9. Installation results page . . . . .	10	20. Confirmation page . . . . .	19
10. Maintenance page . . . . .	11	21. Message asking you to confirm the uninstallation . . . . .	20
11. Prerequisites . . . . .	12	22. Results page . . . . .	20





---

## About this publication

This User's Guide provides the latest information for the IBM® Integrated Installer for Microsoft System Center.

---

## Conventions and terminology

Paragraphs that start with a bold **Note**, **Important**, or **Attention** are notices with specific meanings that highlight key information.

**Note:** These notices provide important tips, guidance, or advice.

**Important:** These notices provide information or advice that might help you avoid inconvenient or difficult situations.

**Attention:** These notices indicate possible damage to programs, devices, or data. An attention notice appears before the instruction or situation in which damage can occur.



---

## Information resources

You can find additional information about the IBM Integrated Installer for Microsoft System Center in the product documentation and on the World Wide Web.

---

### PDF files

View or print documentation that is available in Portable Document Format (PDF).

#### Downloading Adobe Acrobat Reader

You need Adobe Acrobat Reader to view or print these PDF files. You can download a copy from the Adobe Reader website.

#### Viewing and printing PDF files

You can view or print any of the PDF files in the following list. Go to Microsoft Systems Management Solutions for IBM Servers to sign in and locate the download links for the publications.

#### Saving PDF files

To save a PDF file, complete the following steps:

1. Right-click the link to the PDF in your browser.
2. Perform one of the following tasks.

Web browser	Command
For Internet Explorer	Click <b>Save Target As</b> .
For Netscape Navigator or Mozilla	Click <b>Save Link As</b> .

3. Navigate to the directory in which you want to save the PDF file.
4. Click **Save**.

---

### World Wide Web resources

The following web pages provide resources for understanding, using, and troubleshooting IBM System x, BladeCenter® servers, and systems-management tools.

#### IBM web site for Microsoft Systems Management Solutions for IBM servers

IBM website for Microsoft Systems Management Solutions for IBM servers

Locate the latest downloads for IBM Upward Integration for Microsoft System Center, v5.0.

## **IBM Systems: Technical support site**

IBM Systems Technical support site

Locate support for IBM hardware and systems-management software.

## **IBM Systems Management Software: Download/Registration page**

IBM Systems Management Software: Download/Registration page

Download IBM systems-management software, including IBM Systems Director.

## **IBM System x<sup>®</sup> Systems Management page**

IBM System x Systems Management page

Obtain an overview of IBM systems management using IBM Director Agent or IBM Director Core Services.

## **IBM ServerProven<sup>®</sup> pages**

System x ServerProven pages

BladeCenter ServerProven pages

Obtain information about hardware compatibility with IBM System x, IBM BladeCenter, and IBM IntelliStation<sup>®</sup> hardware.

---

## Chapter 1. IBM Integrated Installer

This section provides an overview of the IBM Integrated Installer.

---

### Computer requirements

The following hardware, operating systems, and software are supported for this release.

#### Hardware requirements

The IBM Integrated Installer tool has no special hardware requirements. It can be run on IBM and non-IBM servers, workstations, and laptops that support the Windows operating system.

#### Supported operating systems

The IBM Integrated Installer tool is supported on the following Windows operating systems:

- Windows Server 2003 SP2 / R2 SP1 (Enterprise Edition, Standard Edition)
- Windows Server 2003 SP2 / R2 x64 (Enterprise Edition, Standard Edition)
- Windows Server 2008 SP1 / SP2 (Enterprise Edition, Standard Edition)
- Windows Server 2008 SP1 / SP2 x64 (Enterprise Edition, Standard Edition)
- Windows Server 2008 R2
- Windows Server 2012
- Windows Server 2012 R2

#### Software requirements

The account that is used to install the IBM Integrated Installer tool on the host computer must have administrator privileges.



---

## Chapter 2. Installing components

The setup wizard for the IBM Integrated Installer guides you through the steps required to install components.

---

### Installing components by using the setup wizard

#### About this task

To install components, complete the following steps.

#### Procedure

1. Unzip the integrated installer package, and click the executable file `setup.exe` to open the setup wizard. The splash page for IBM Integrated Installer for Microsoft System Center, 4.0 opens, followed by a language selection list.

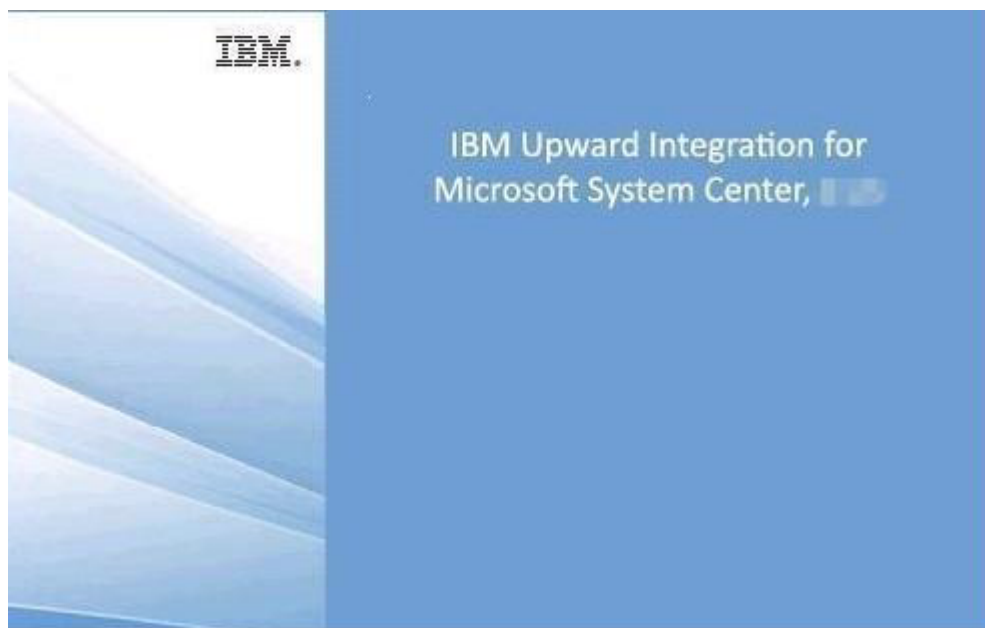


Figure 1. Initializing



Figure 2. Language selection list

2. Select a language for the Integrated Installer.

**Note:** The components are installed in the same language that you select.



Figure 3. Welcome page

3. On the Welcome page, click **Next**. The Prerequisites page opens.



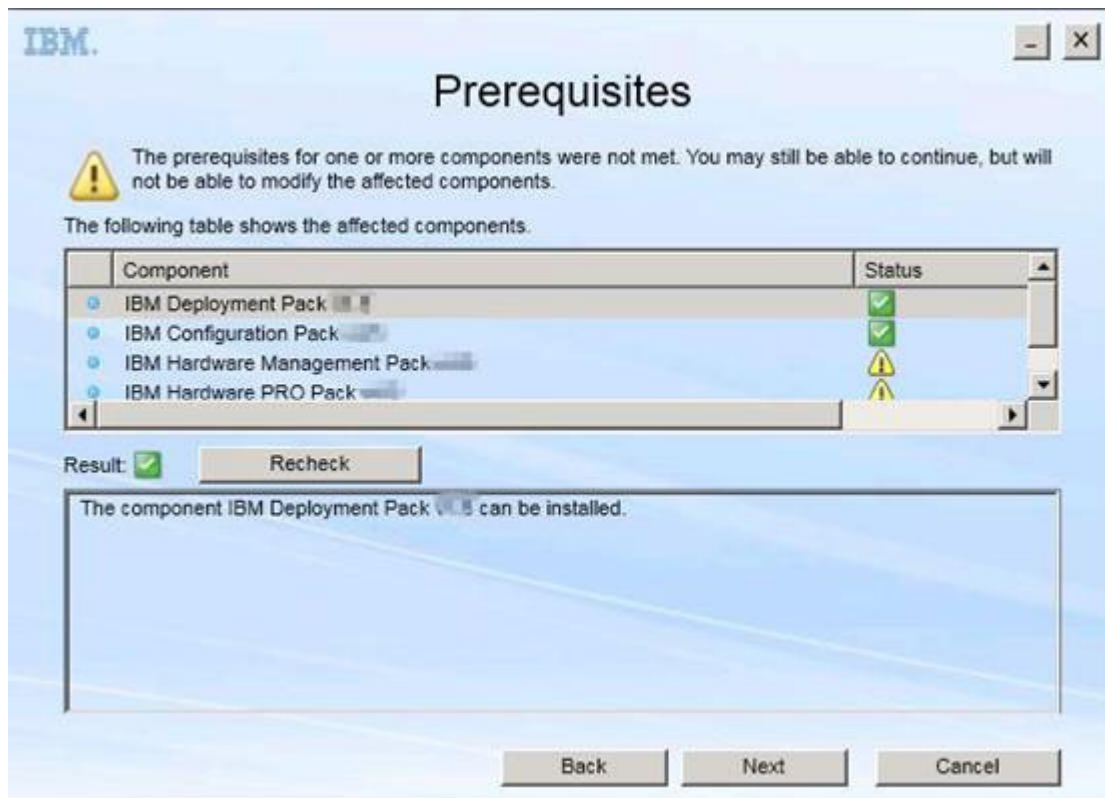


Figure 4. Prerequisites page

4. Before installing or upgrading components, review the Prerequisites page to make sure that all prerequisites are met. If a prerequisite is not met, the status icon next to it is a red x, **Next** is disabled, and the installation cannot continue. Before continuing, change the installation environment and then check the prerequisites again.
5. When all prerequisites are met, click **Next** to continue with the installation. The Install Suite Components page opens.

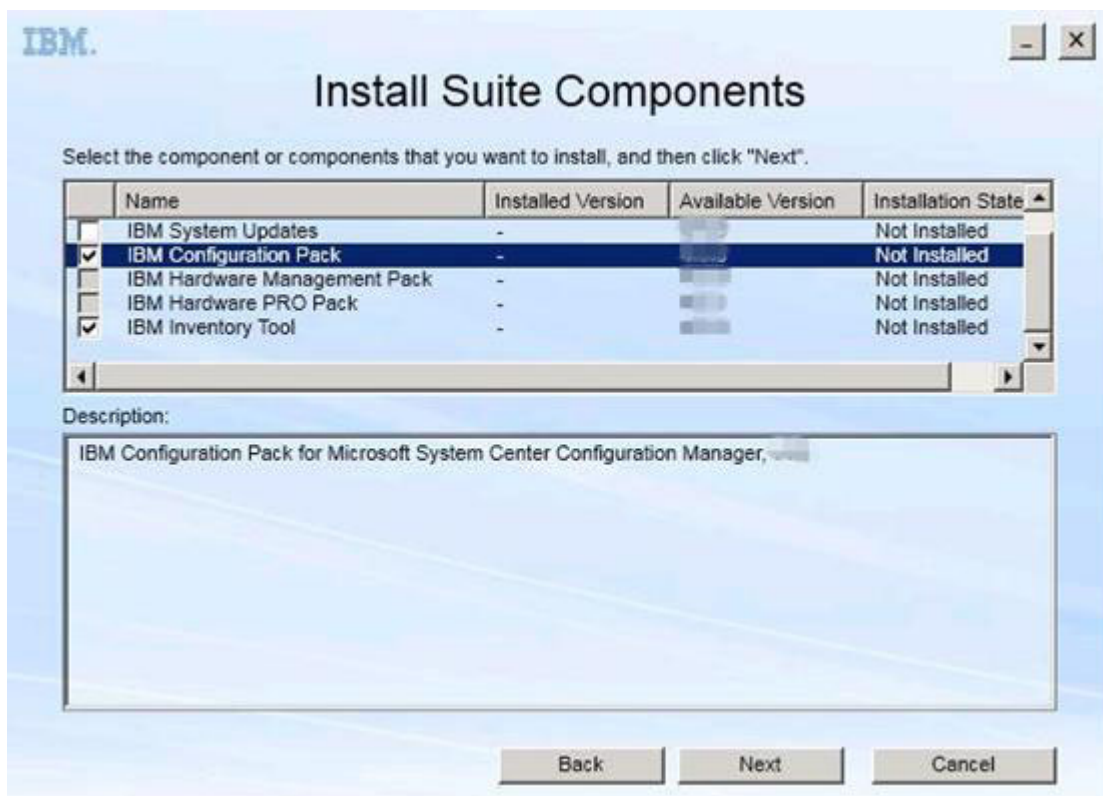


Figure 5. Select the components to install

The Install Suite Components page shows details, including the installed version, available version, and installation state for the components. The installed version is the version that has been installed on the system. The available version is the version included in the integrated installer.

The installation state depends on the installed version and available version. There are four installation states:

- Not Installed - there is no installed version.
- Installed - the installed version is the same as the available version.
- Upgrade - the installed version is older than the available version.
- Cannot Install - the installed version is newer than the available version.

If a prerequisite for a component has not been met or the installation state is **Cannot Install**, the related check box is disabled. This state means that there is no available action for this component. The reason is displayed in the description area.

6. Select one or more available components and click **Next**. The Confirmation page is opens.

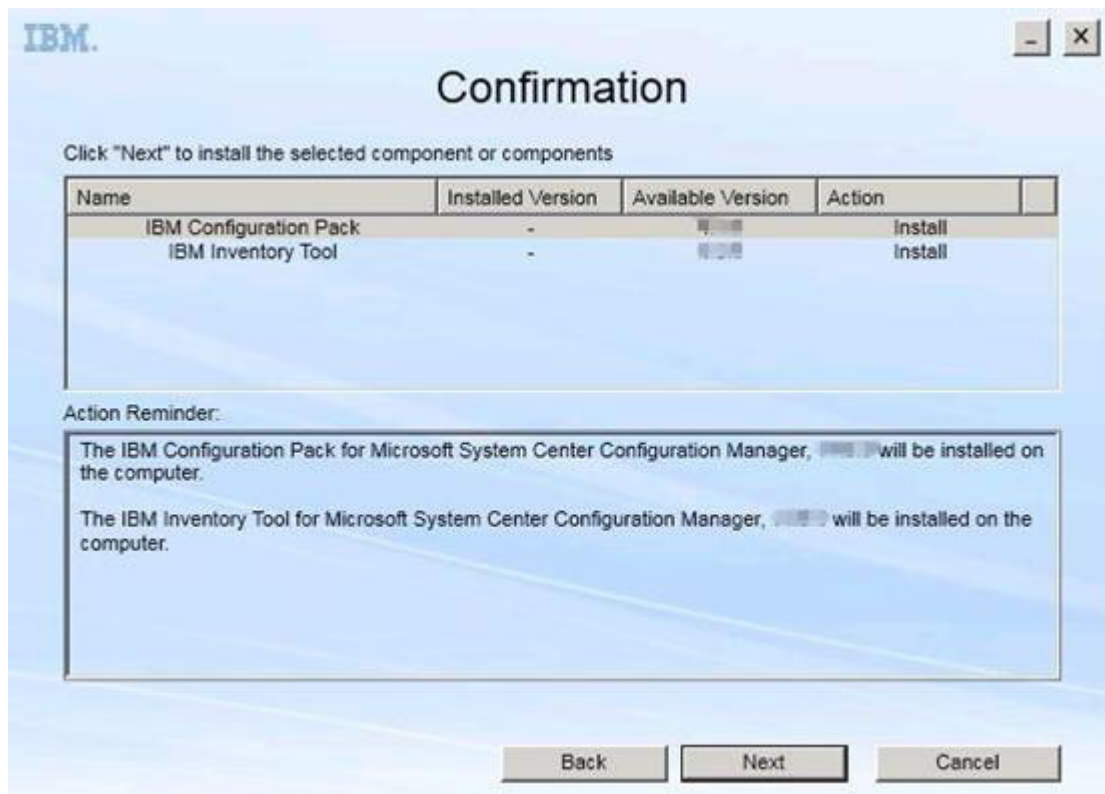


Figure 6. Confirmation of components

The Confirmation page summarizes information that you must confirm before starting to install, repair, upgrade, or uninstall a component. It shows the actions that will be implemented.

When a component is selected, the related information is displayed in the **Action Reminder** area.

7. To start the action indicated, click **Next**. The installation wizard status is displayed.

The installation wizard starts performing the actions. Each component's respective installation application completes the remaining installation work. This process happens component by component.



Figure 7. InstallShield Wizard status

8. Optional: To stop the installation that is in progress for all remaining components, click **Cancel**. The installation for the component running when you click **Cancel** will continue, while the installation of all remaining components will be canceled. The following message is displayed.

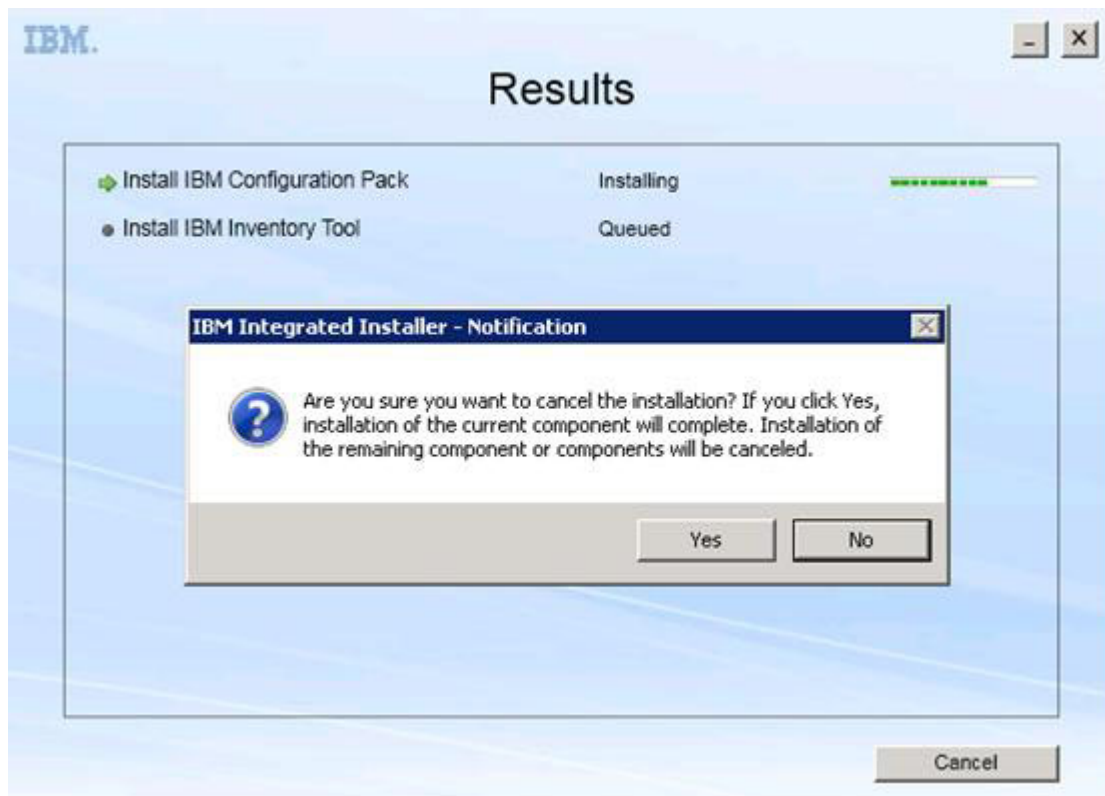


Figure 8. Message asking if you want to cancel the installation

To cancel the installation, click **Yes**. To continue with the installation, click **No**. When the installation process completes, the Results page opens.



Figure 9. Installation results page

The Results page shows the results of the installation. If an action fails to install, it will be designated with an **X** icon. To open the log file for more information about the problem, click **Detail**.

9. To complete the wizard, click **Finish**.

---

## Chapter 3. Maintaining components

If the IBM Integrated Installer previously installed components, the Maintenance page opens when you start the IBM Integrated Installer.



Figure 10. Maintenance page

From the Maintenance page, you can change, repair, and uninstall features.

---

### Changing components

Use the Change option to add, remove, and update a component.

#### Procedure

1. On the Maintenance page, click **Change**. The Prerequisites page opens.



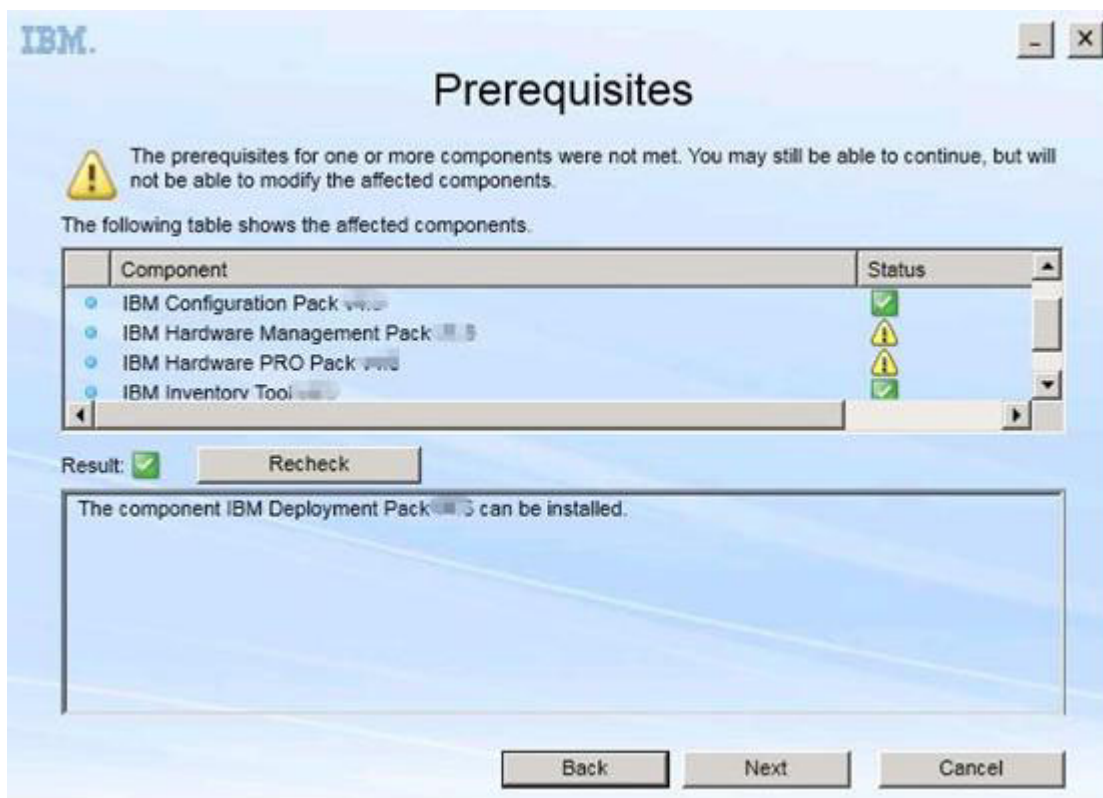


Figure 11. Prerequisites

2. Ensure that you have met the prerequisites for the components, and click **Next**. The Add/Remove Suite Components page opens.

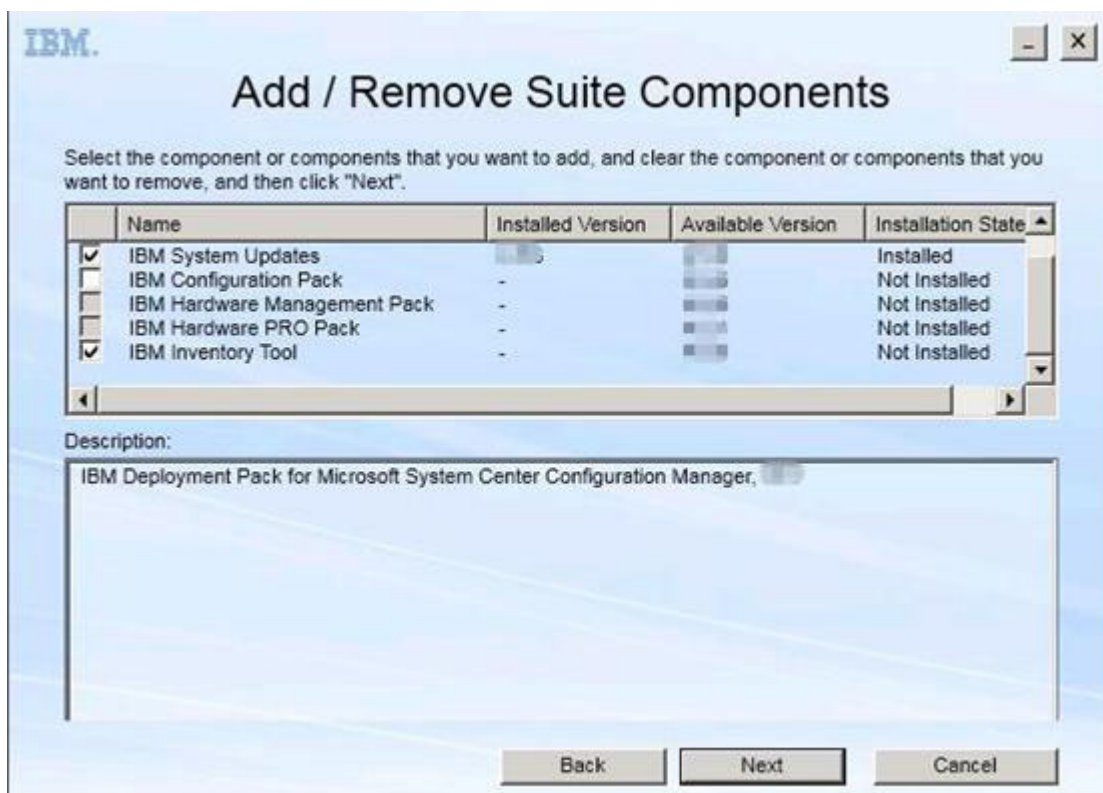


Figure 12. Add and remove Suite Components



If a component has been installed, the component's check box is selected and the location destination is disabled. You cannot change it.

If an older version of the component exists, you can install the upgraded version after prerequisites are met by selecting the check box for that component.

If the check box for a component is disabled, you cannot install it. There are two reasons why a component might be inaccessible:

- A newer version of the component exists on the target computer.
- Prerequisites for the component have not been met.

3. On the Add/Remove Suite Components page, either uninstall, install, or upgrade a component.

Option	Description
Uninstall a component	Clear the check box for the component, and click <b>Next</b> . A message is displayed asking you to confirm the uninstallation process. Click <b>Yes</b> to uninstall the component.
Install a component	Select the check box for the component, and click <b>Next</b> .
Upgrade to a newer version of the component	Select the check box for the updated component, and click <b>Next</b> . The Confirmation page shows the information for the new version.

The Confirmation page opens after you perform any of the actions listed above.

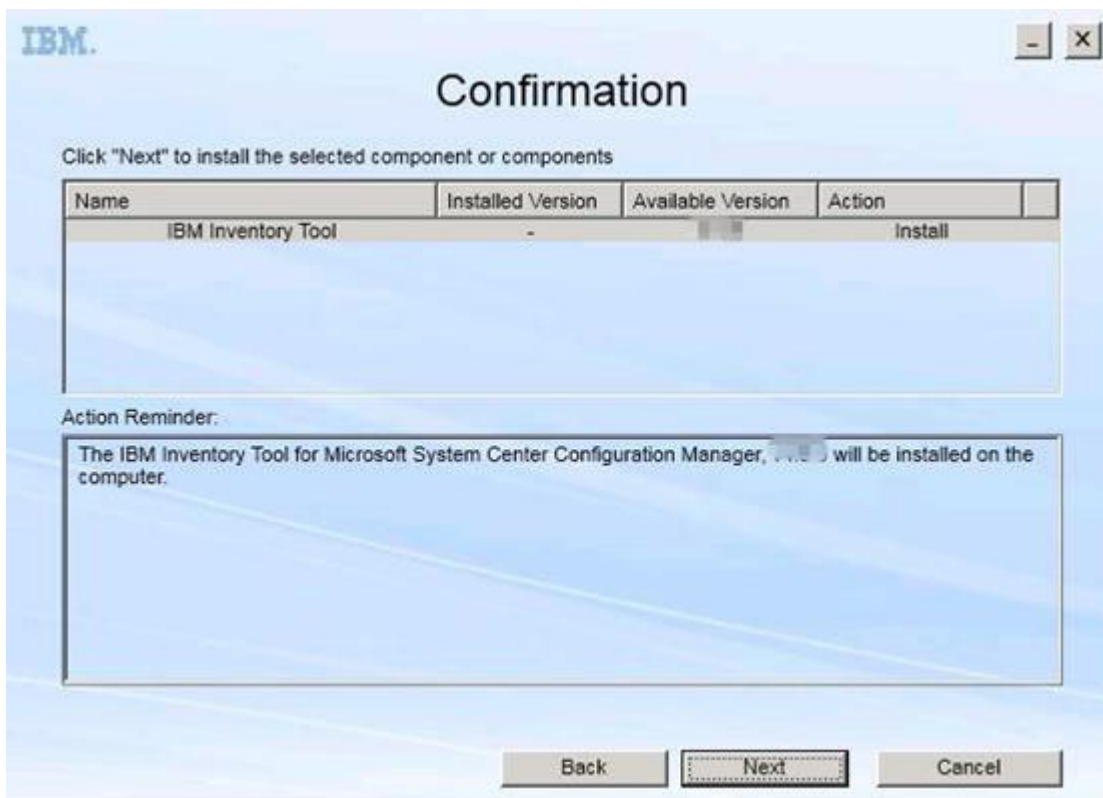


Figure 13. Confirmation page

4. To start the action indicated, click **Next**. The installation wizard status window opens.

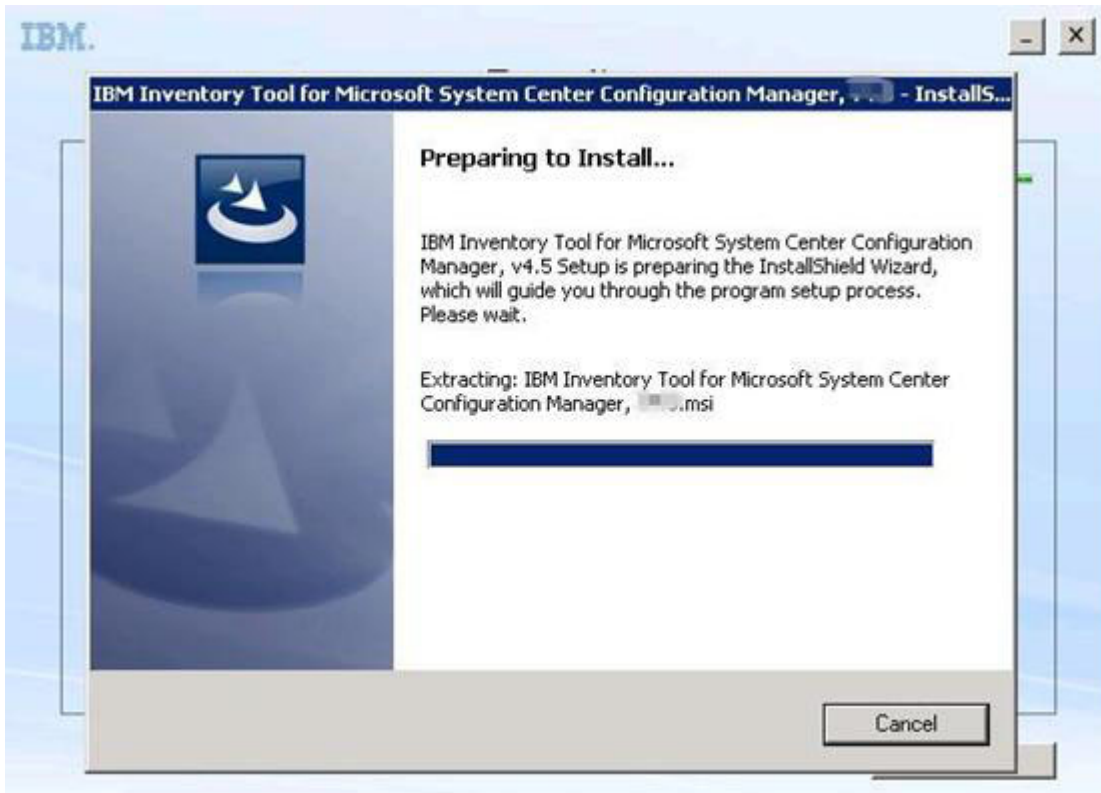


Figure 14. InstallShield Wizard status

The installation wizard starts performing the actions. The components are installed one at a time through their respective installation applications. When the installation process completes, the Results page opens and depicts whether the installation was successful or not.



Figure 15. Installation results

5. Optional: If an action does not complete successfully, the **Detail** option is presented, which opens the log file.
6. When you are ready to exit the wizard, click **Finish**.

---

## Repairing components

Use the Repair option to repair an installed component. The Repair option repairs the installed files, the registry values, and other items for an installed component.

### About this task

The user interfaces for the Repair option and the Change option are basically the same. On the Repair Suite Components page, for instance, the components you can repair are listed, as shown in the screen capture. Uninstalled components are disabled.

### Procedure

1. From the Maintenance page, select **Repair**. The Repair Suite Components page opens.

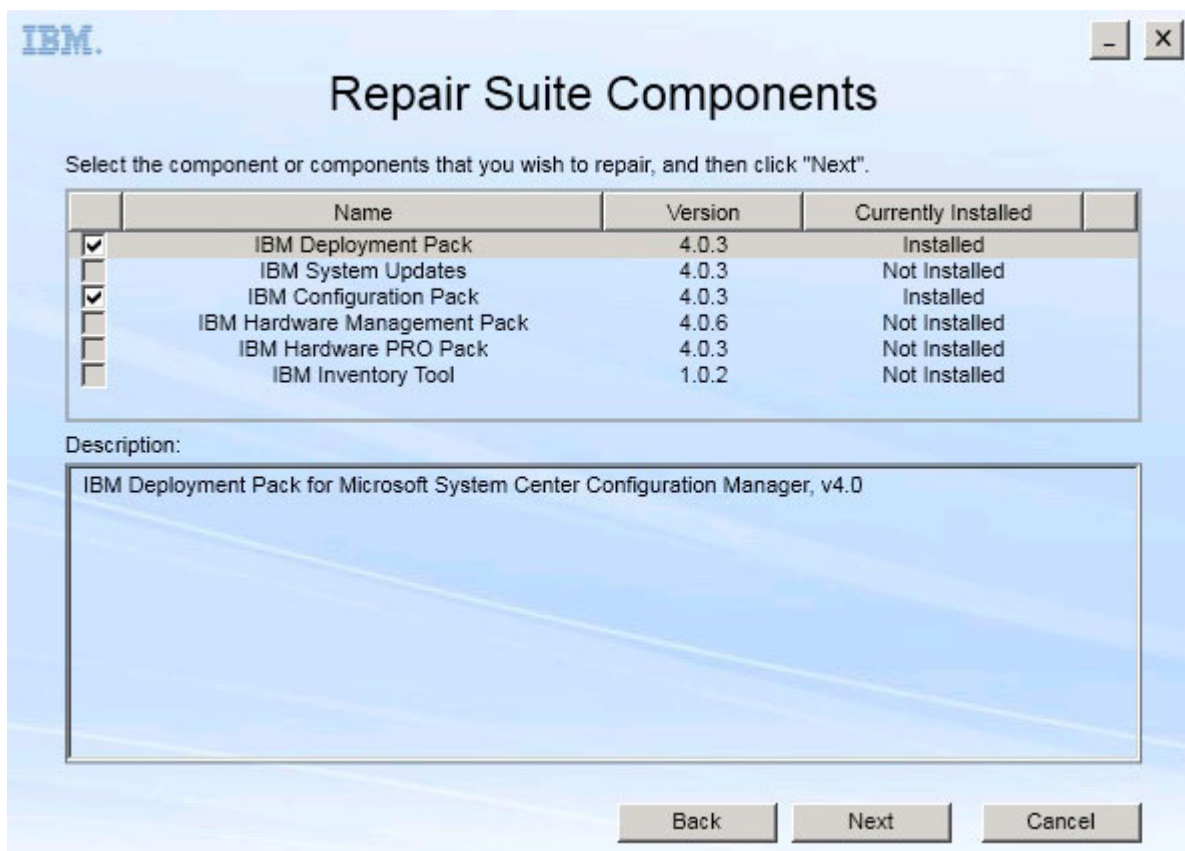


Figure 16. Repair Suite Components page

2. Select the check box for the component that you want to repair, and click **Next**. The Repair Confirmation page opens.



Figure 17. Repair Confirmation page

3. To start the repair action, click **Next**. The installation wizard opens.

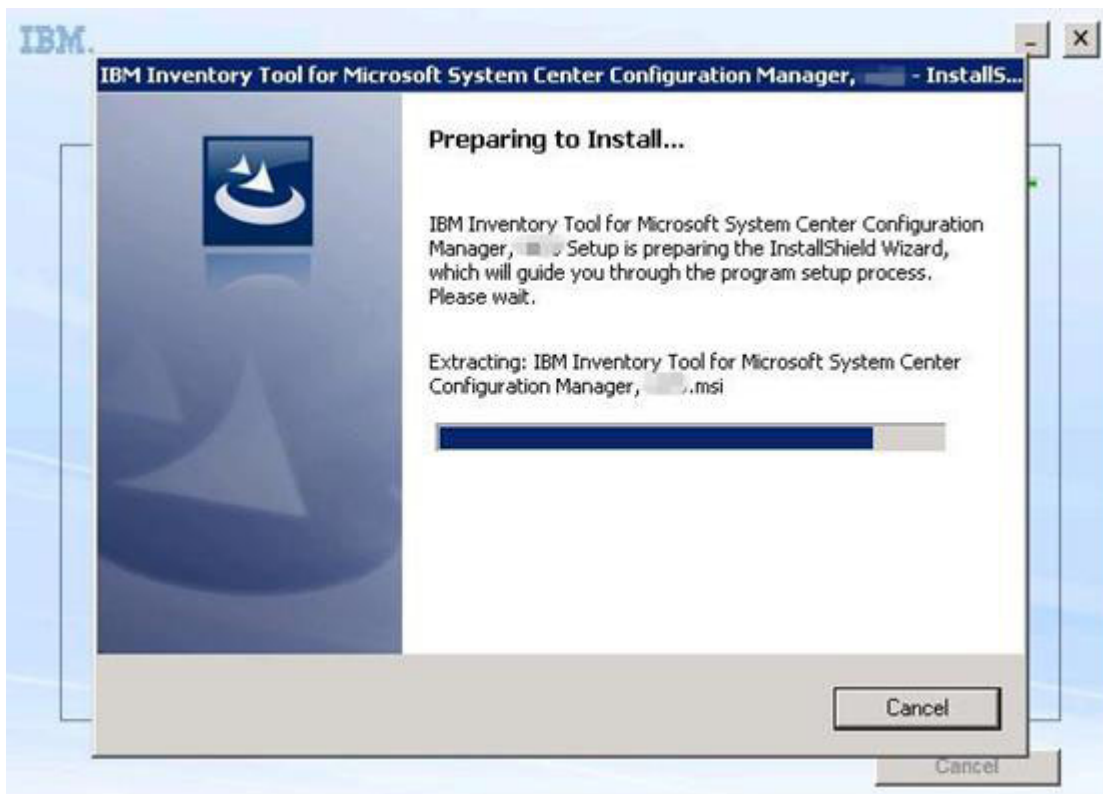


Figure 18. Installation wizard

The installation application for each component performs the repair work for that component. This is done component by component.

When the installation completes, the Results page opens and shows the status of the repair.



Figure 19. Repair results

4. Click **Finish**.

---

## Uninstalling components

To remove all installed components, use the **Uninstall**. To remove a single component, use the **Change** option on the Maintenance page.

### Procedure

1. From the Maintenance page, click **Uninstall**. The Confirmation page opens.

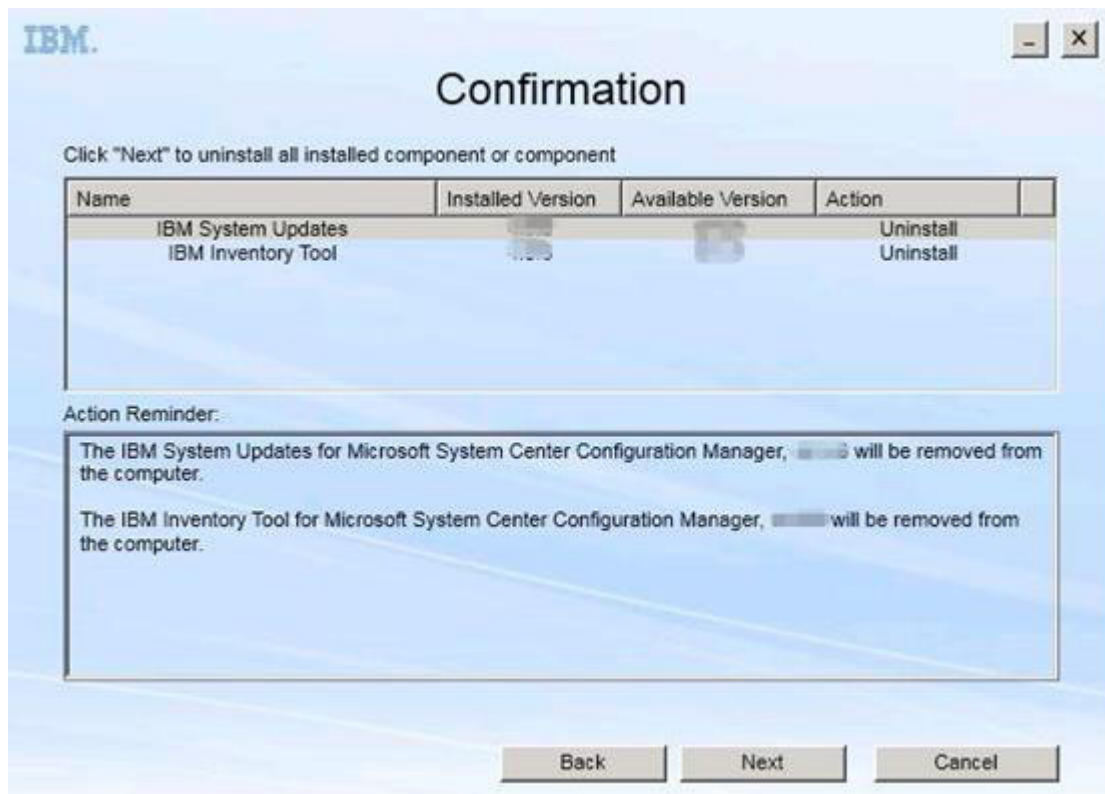


Figure 20. Confirmation page

The Confirmation page summarizes the actions to be taken and requires you to confirm that you want to continue with the uninstallation.

2. To uninstall the components, click **Next**.

The components are uninstalled one by one. During the process, you must confirm the uninstallation action for each component before it is uninstalled, as shown in the following figure.



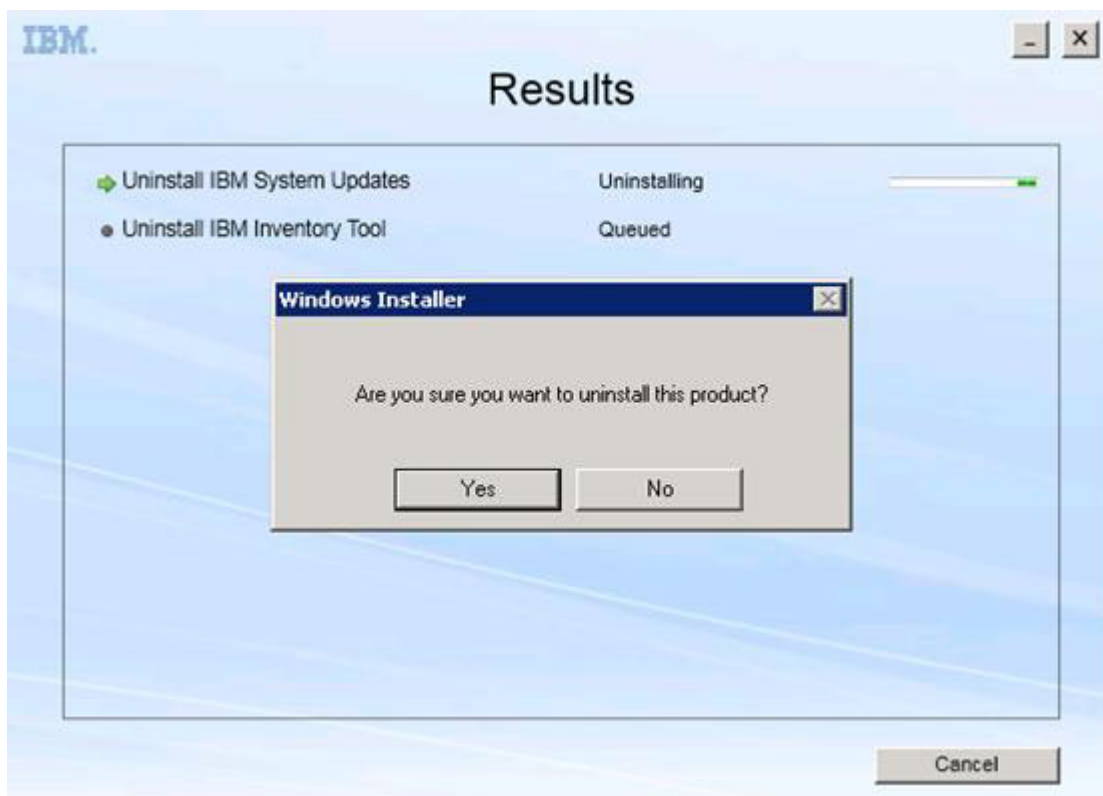


Figure 21. Message asking you to confirm the uninstallation

3. Click **Yes** to complete the process. When the process completes, the Results page opens.



Figure 22. Results page



4. Click **Finish**.



---

## Appendix A. Troubleshooting

This topic describes situations you might encounter and provides tips for correcting problems.

### **The installation wizard does not launch when .Net Framework v4.0 is not installed**

#### **Issue:**

.Net Framework 4.0 or a later version is not installed on this computer.

#### **Possible solution:**

Before attempting to start the installation wizard, install .Net Framework 4.0. You can download it from <http://www.microsoft.com/en-US/download/details.aspx?id=17718>

### **The installation wizard will not either install or launch due to limited disk space**

#### **Issue:**

An error message is displayed indicating that there is not enough disk space to install the components.

#### **Possible solution:**

Clear space on your hard disk drive so that you have enough disk space to install the components.

### **The installation wizard will fail on Windows 2003 server if .Network Framework 2.0 or later is not installed**

#### **Issue:**

The installation wizard either cannot be started, or it fails, if .Network Framework 2.0 or later is not installed on Windows 2003 server. It is a known limitation.

#### **Possible solution:**

Install .Net Framework 4.0 or a later version on the target server before running the installation wizard.

### **IBM Hardware PRO Pack can be uninstalled while leaving IBM Hardware Management Pack**

#### **Issue:**

IBM Hardware PRO Pack functionality depends on IBM Hardware Management Pack being installed. If you uninstall the IBM Hardware PRO Pack using the IBM Integrated Installer installation wizard, it prompts you to uninstall IBM Hardware Management Pack as well.

If you uninstall IBM Hardware Management Pack from the Start menu or from the Control Panel, the Management Pack can be uninstalled while leaving the PRO Pack installed on the system. However, when you remove the IBM Hardware Management Pack from the SCOM console, you must uninstall the PRO Pack first. The PRO Pack cannot work without the IBM Hardware Management Pack being installed.

#### **Possible solution:**

Uninstall the IBM Hardware PRO Pack before uninstalling the IBM Hardware Management Pack.

**Installation wizard installs components to a network mapped drive, but components cannot be started**

**Issue:**

Although components are installed to a network mapped drive, the components cannot be started normally. When the installation wizard installs components to a network mapped drive, only the component files are copied.

The information generated when a component is running is recorded on the local machine. So the component cannot be started from a remote server directly.

---

## Appendix B. References

These topics contain additional reference information to help you use the product.

---

### Accessibility features for IBM Integrated Installer

Accessibility features help users who have a disability, such as restricted mobility or limited vision, to use information technology products successfully.

---

#### Accessibility

IBM System Updates include the following accessibility features:

- It can be operated through only the keyboard
- All information is communicated independent of color
- System settings for font, size, and color are inherited
- It supports interfaces commonly used by screen readers and screen magnifiers

#### Keyboard navigation

This product uses standard Microsoft Windows navigation keys.

#### IBM and accessibility

For information about the commitment that IBM has to accessibility, see the IBM Human Ability and Accessibility Center web site at <http://www-03.ibm.com/able/>.

#### Accessibility deviation

The following issues are known accessibility limitations.

##### **JAWS cannot communicate whether the check box is selected or cleared in the installation wizard**

If you select one item in the list view on the Install/Upgrade page or on the Add/Remove page in the installation wizard and then press the space bar to select or clear the item check box, JAWS (job access with speech) cannot determine whether the check box is selected or not. This issue is a known limitation.



---

## Notices

This information was developed for products and services offered in the U.S.A. IBM may not offer the products, services, or features discussed in this document in other countries.

Consult your local IBM representative for information on the products and services currently available in your area. Any reference to an IBM product, program, or service is not intended to state or imply that only that IBM product, program, or service may be used. Any functionally equivalent product, program, or service that does not infringe any IBM intellectual property right may be used instead. However, it is the user's responsibility to evaluate and verify the operation of any non-IBM product, program, or service.

IBM may have patents or pending patent applications covering subject matter described in this document. The furnishing of this document does not grant you any license to these patents. You can send license inquiries, in writing, to:

IBM Director of Licensing  
IBM Corporation  
North Castle Drive  
Armonk, NY 10504-1785  
U.S.A.

INTERNATIONAL BUSINESS MACHINES CORPORATION PROVIDES THIS PUBLICATION "AS IS" WITHOUT WARRANTY OF ANY KIND, EITHER EXPRESS OR IMPLIED, INCLUDING, BUT NOT LIMITED TO, THE IMPLIED WARRANTIES OF NON-INFRINGEMENT, MERCHANTABILITY OR FITNESS FOR A PARTICULAR PURPOSE. Some states do not allow disclaimer of express or implied warranties in certain transactions, therefore, this statement may not apply to you.

This information could include technical inaccuracies or typographical errors. Changes are periodically made to the information herein; these changes will be incorporated in new editions of the publication. IBM may make improvements and/or changes in the product(s) and/or the program(s) described in this publication at any time without notice.

Any references in this information to non-IBM Web sites are provided for convenience only and do not in any manner serve as an endorsement of those Web sites. The materials at those Web sites are not part of the materials for this IBM product, and use of those Web sites is at your own risk.

IBM may use or distribute any of the information you supply in any way it believes appropriate without incurring any obligation to you.

---

## Trademarks

IBM, the IBM logo, and `ibm.com`<sup>®</sup> are trademarks or registered trademarks of International Business Machines Corporation in the United States, other countries, or both. If these and other IBM trademarked terms are marked on their first occurrence in this information with a trademark symbol (<sup>®</sup> or <sup>™</sup>), these symbols indicate U.S. registered or common law trademarks owned by IBM at the time this information was published.

Such trademarks may also be registered or common law trademarks in other countries. A current list of IBM trademarks is available on the web at Copyright and trademark information at <http://www.ibm.com/legal/copytrade.shtml>.

Adobe and PostScript are either registered trademarks or trademarks of Adobe Systems Incorporated in the United States, other countries, or both.

Cell Broadband Engine is a trademark of Sony Computer Entertainment, Inc., in the United States, other countries, or both and is used under license therefrom.

Intel, Intel Xeon, Itanium, and Pentium are trademarks or registered trademarks of Intel Corporation or its subsidiaries in the United States and other countries.

Java<sup>™</sup> and all Java-based trademarks are trademarks of Sun Microsystems, Inc., in the United States, other countries, or both.

Linux is a registered trademark of Linus Torvalds in the United States, other countries, or both.

Microsoft, Windows, and Windows NT are trademarks of Microsoft Corporation in the United States, other countries, or both.

UNIX is a registered trademark of The Open Group in the United States and other countries.

VMware, vCenter, and vSphere are trademarks of VMware Corporation in the United States, other countries, or both.

Other company, product, or service names may be trademarks or service marks of others.

---

## Important notes

View important assumptions about terminology and claims.

Processor speed indicates the internal clock speed of the microprocessor; other factors also affect application performance.

CD or DVD drive speed is the variable read rate. Actual speeds vary and are often less than the possible maximum.

When referring to processor storage, real and virtual storage, or channel volume, KB stands for 1024 bytes, MB stands for 1,048,576 bytes, and GB stands for 1,073,741,824 bytes.



When referring to hard disk drive capacity or communications volume, MB stands for 1•000•000 bytes, and GB stands for 1•000•000•000 bytes. Total user-accessible capacity can vary depending on operating environments.

Maximum internal hard disk drive capacities assume the replacement of any standard hard disk drives and population of all hard disk drive bays with the largest currently supported drives that are available from IBM.

Maximum memory might require replacement of the standard memory with an optional memory module.

IBM makes no representation or warranties regarding non-IBM products and services that are ServerProven, including but not limited to the implied warranties of merchantability and fitness for a particular purpose. These products are offered and warranted solely by third parties.

IBM makes no representations or warranties with respect to non-IBM products. Support (if any) for the non-IBM products is provided by the third party, not IBM.

Some software might differ from its retail version (if available) and might not include user manuals or all program functionality.



---

## Readers' Comments — We'd Like to Hear from You

IBM System x  
IBM Integrated Installer for  
Microsoft System Center  
User's Guide  
Version 5.0

We appreciate your comments about this publication. Please comment on specific errors or omissions, accuracy, organization, subject matter, or completeness of this book. The comments you send should pertain to only the information in this manual or product and the way in which the information is presented.

For technical questions and information about products and prices, please contact your IBM branch office, your IBM business partner, or your authorized remarketer.

When you send comments to IBM, you grant IBM a nonexclusive right to use or distribute your comments in any way it believes appropriate without incurring any obligation to you. IBM or any other organizations will only use the personal information that you supply to contact you about the issues that you state on this form.

Comments:

Thank you for your support.

Send your comments to the address on the reverse side of this form.

If you would like a response from IBM, please fill in the following information:

\_\_\_\_\_  
Name

\_\_\_\_\_  
Address

\_\_\_\_\_  
Company or Organization

\_\_\_\_\_  
Phone No.

\_\_\_\_\_  
Email address



Cut or Fold  
Along Line

Fold and Tape

Please do not staple

Fold and Tape



NO POSTAGE  
NECESSARY  
IF MAILED IN THE  
UNITED STATES

**BUSINESS REPLY MAIL**

FIRST-CLASS MAIL PERMIT NO. 40 ARMONK, NEW YORK

POSTAGE WILL BE PAID BY ADDRESSEE

International  
Business Machines Corporation  
PO Box 12195  
Research Triangle Park  
NC  
U.S.A. 27709-9990



Fold and Tape

Please do not staple

Fold and Tape

Cut or Fold  
Along Line





Printed in USA