

# AutoPilot Installer



*for*

*Windows Server 2003*

*Windows Server 2008*

***Quick Installation Manual***

Last updated February 26, 2008

Copyright© 2007–2008 Emulex Corporation. All rights reserved worldwide. No part of this document may be reproduced by any means nor translated to any electronic medium without the written consent of Emulex Corporation.

Information furnished by Emulex Corporation is believed to be accurate and reliable. However, no responsibility is assumed by Emulex Corporation for its use; or for any infringements of patents or other rights of third parties which may result from its use. No license is granted by implication or otherwise under any patent or patent rights of Emulex Corporation.

Emulex, AutoPilot Installer, BlockGuard, cLAN, FabricStream, FibreSpy, Giganet, HBAnyware, InSpeed, IntraLink, LightPulse, MultiPulse, SAN Insite, SBOD and Vixel are registered trademarks, and AutoPilot Manager, EZPilot, SLI and VMPilot are trademarks, of Emulex Corporation. All other brand or product names referenced herein are trademarks or registered trademarks of their respective companies or organizations.

Emulex provides this manual "as is" without any warranty of any kind, either expressed or implied, including but not limited to the implied warranties of merchantability or fitness for a particular purpose. Emulex Corporation may make improvements and changes to the product described in this manual at any time and without any notice. Emulex Corporation assumes no responsibility for its use, nor for any infringements of patents or other rights of third parties that may result. Periodic changes are made to information contained herein; although these changes will be incorporated into new editions of this manual, Emulex Corporation disclaims any undertaking to give notice of such changes.

#### DH-CHAP Notice.

License: Copyright (c) 1998-2006 The OpenSSL Project. All rights reserved. This product includes software developed by the OpenSSL Project for use in the OpenSSL Toolkit. (<http://www.openssl.org/>) SSLeay License: Copyright (C) 1995-1998 Eric Young (eay@cryptsoft.com) All rights reserved. This product includes cryptographic software written by Eric Young (eay@cryptsoft.com). This product includes software written by Tim Hudson (tjh@cryptsoft.com).

#### Windows DH-CHAP Notice.

Derived from the RSA Data Security, Inc. MD5 Message-Digest Algorithm.  
Copyright (C) 1991-2, RSA Data Security, Inc. Created 1991. All rights reserved.

## Introduction

AutoPilot Installer® for Emulex® drivers provides installation options that range from a simple installation with a few mouse clicks to custom unattended installations using predefined script files.

AutoPilot Installer is included with Emulex drivers and utilities in Windows executable files that can be downloaded from the Emulex Web site. Run the distribution executable file to extract all of the software needed for an installation, then complete the installation using AutoPilot Installer.

AutoPilot Installer allows you to install a driver using any of the following methods:

**Hardware-first installation.** The host bus adapter (HBA) is installed before the downloaded Emulex drivers and utilities are installed. See page 3 for this procedure.

**Software-first installation.** This new installation method allows drivers and utilities to be downloaded from the Emulex Web site and installed using AutoPilot Installer prior to the installation of any HBAs. The drivers and utilities are automatically used when HBAs are installed at a later time. See page 4 for this procedure.

**Unattended installation.** This new installation method allows you to set up AutoPilot Installer to run unattended using customized scripts. Unattended installation can be used for both hardware-first and software-first installations. See the complete Installation section of the driver user manual for more information.

---

**Note:** Complete driver and utilities documentation may be downloaded from the Emulex Web site ([www.emulex.com](http://www.emulex.com)). Click **Support** at the top of the Web page and navigate by clicking the appropriate links.

---

## Updating the Driver Using AutoPilot Installer

---

If you are currently running an older driver version, use the hardware-first installation procedure to update your driver. Begin at step 2 to update the driver.

You can also update the Emulex drivers following the manual installation method. See the complete Installation section of the driver user manual for this procedure.

## Distribution Executable File Overview

The distribution executable file is a self-extracting file that includes the following:

- AutoPilot Installer - installs driver and utilities.
- Driver - manages communication and data transfer between applications and I/O devices, using HBAs as agents.
- HBAnyware utility - performs installation and configuration tasks on remote and local adapters.

## Distribution Executable File Procedure

---

To run the distribution executable file:

1. Download the distribution executable file from the Emulex Web site to your system.
2. Double-click the distribution executable file. A window is displayed with driver version information and Emulex contact information
3. Click **Next** to access the Location window or click **Cancel** to close the window.
4. The default installation location is displayed. Browse to a different location, if desired. Click **Install** to continue the installation.

5. The Progress window is displayed. As each task is completed, the corresponding checkbox is automatically selected.
6. After all tasks are completed, a confirmation window is displayed. The Start AutoPilot Installer checkbox is automatically selected. To start AutoPilot Installer later, clear this checkbox.
7. Click **Finish** to close the distribution executable file.

## AutoPilot Installer Introduction

The Emulex AutoPilot Installer is a Fibre Channel HBA installation wizard for Windows. The AutoPilot Installer installs (or updates) Emulex drivers and utilities and configures HBAs, drivers and utilities.

### Prerequisites

---

- One of the following operating systems must be installed:
  - Windows Server 2003 running on an x86, x64 or Itanium 64-bit platform - See the Emulex Web site for required updates to the Microsoft Storport driver.
  - Windows Server 2008 running on an x86, x64 or Itanium 64-bit platform - See the Emulex Web site for required updates to the Microsoft Storport driver.
- Minimum 512 KB memory.

### Installation Planning

---

The following table describes the types of installations that can be performed under certain conditions. Use this information to determine which method to use for your situation. This document includes instructions for attended installations only. See the complete Installation section of the driver user manual for more information on unattended installations.

Condition	Attended Installations		Unattended Installations	
	Hardware-First	Software-First	Unattended Installation	Replicated Installation
No HBA in a single system		X	X	X
New HBA in a single system	X		X	X
Existing HBAs and drivers installed, updated driver available	X		X	X
Multiple systems, no HBAs installed		X	X	X
Multiple systems, new HBAs installed	X		X	X

# AutoPilot Installation Procedures

## Hardware-First Installation

---

### Prerequisites

- Distribution executable file downloaded from the Emulex Web site.

---

**Note:** To update the driver, begin the following procedure at Step 2.

---

### Procedure

To perform a hardware-first installation:

1. Install a new Emulex HBA and power-on the system. If the Windows Found New Hardware wizard is displayed, click **Cancel** to exit. AutoPilot Installer performs this function.

---

**Note:** If there are multiple HBAs in the system, the Windows Found New Hardware wizard is displayed for each HBA. Cancel to exit the wizard for each HBA.

---

2. If you have already extracted the driver and utility files, run the APInstaller.exe file.  
If you have not extracted the driver and utility files, run the distribution executable file (see page 1) and leave the Start AutoPilot Installer check box selected. Click **Finish**.
3. Click **Next**. Installation automatically completes, except in the following situations:
  - If you are changing driver types, the Available Drivers window is displayed. This window allows you to select a new driver type. Select the driver type from the dropdown list and click **Next**.
  - If you are installing an older driver version, the Available Drivers window is displayed. Select the existing driver version from the dropdown list and click **Next**.
  - If you are installing a vendor-specific version of the Emulex driver installation program, this program may include one or more windows with questions that you must answer before continuing the installation process. If this is the case, answer each question and click **Next** on each window to continue.
4. View the progress of the installation. Once the installation is successful, the Congratulations window is displayed.
5. View or print a report, if desired.
  - View Installation Report - your text editor (typically Notepad) displays a report with current HBA inventory and configuration information and task results. The text file is named in the following format: *report\_MM-DD-YY-#.txt*
    - *MM* = month
    - *DD* = day
    - *YY* = year
    - *#* = report number
  - Print Installation Report - your default print window is displayed.
6. Click **Finish** to close AutoPilot Installer. If your system requires a reboot for this change to take effect, you are prompted to do so when you click **Finish**.

### If the Installation Fails

If the installation fails, the Diagnostics window is displayed. To view the reason an HBA failed, select the HBA row. The reason and suggested corrective action are displayed below the list.

## Software-First Installation

---

### Prerequisites

- Distribution executable file downloaded from the Emulex Web site.

### Procedure

To perform a software-first installation:

1. If you have already extracted the driver and utility files, run the APInstaller.exe file.  
If you have not extracted the driver and utility files, run the distribution executable file (page 1), and leave the Start AutoPilot Installer check box selected. Click **Finish**. The following message is displayed:

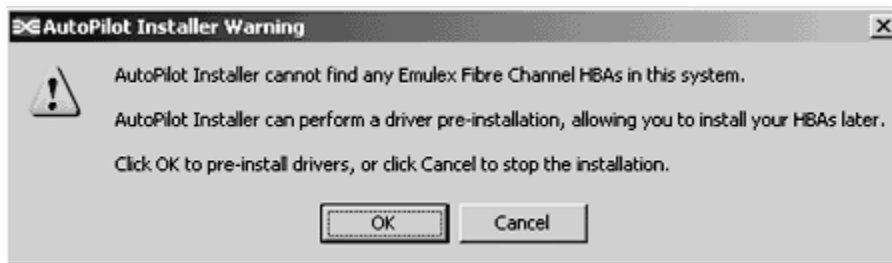


Figure 1: Message (Software-First Installation)

2. Click **OK**. The Welcome window is displayed.
3. Click **Next**. The Available Drivers window is displayed.
4. Click **Next**. Installation automatically completes.
  - If you are installing a vendor-specific version of the Emulex driver installation program, this program may include one or more windows with questions that you must answer before continuing the installation process. If this is the case, installation does not automatically complete and you must answer each question and click **Next** on each window to continue.
5. View the progress of the installation. Once the installation is successful, the Congratulations window is displayed.
6. View or print a report, if desired.

View Installation Report - your text editor (typically Notepad) displays a report with task results. The text file is named in the following format: *report\_MM-DD-YY-#.txt*

- *MM* = month
- *DD* = day
- *YY* = year
- *#* = report number

Print Installation Report - your default print window is displayed.

7. Click **Finish** to close AutoPilot Installer. If the system requires a reboot for this change to take effect, you are prompted to do so when you click **Finish**.