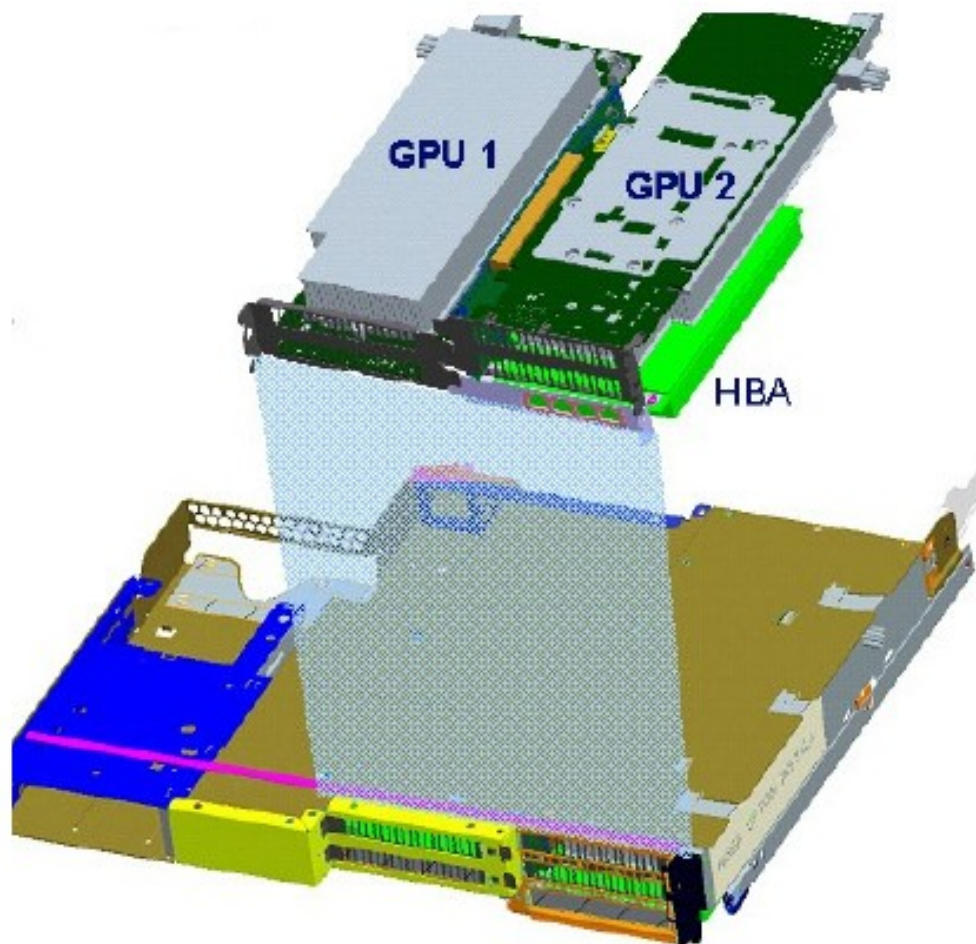




IBM System x

nVidia M1060 (43V5909) Installation on dx360 M3

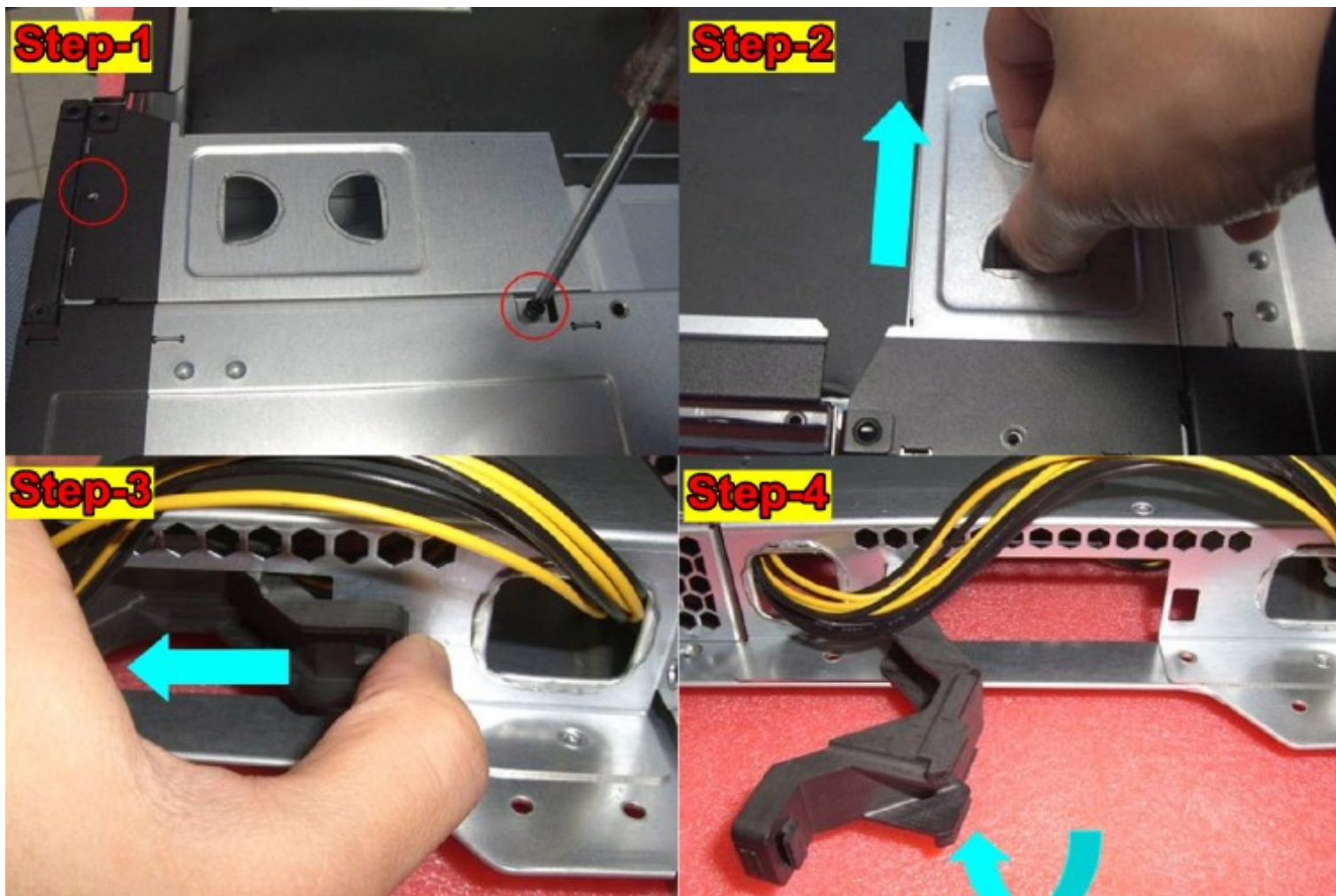
2x NV M1060 Configuraiton



GPU1 Installation

- Step 1: Remove screws holding left-slot EMI bottom cover. (Please use this torque : 6 In-lbs)
- Step 2: Remove EMI bottom cover
- Step 3/4: Unlock PCI holder

GPU1 Installation



GPU1 Installation

- Step 5: Slide GPU into GPU tray with card aslant
- Step 6: Slide GPU into GPU tray
- Step 7: Slide GPU into GPU tray and seat fully into PCIe slot
- Step 8: Reinstall EMI bottom cover

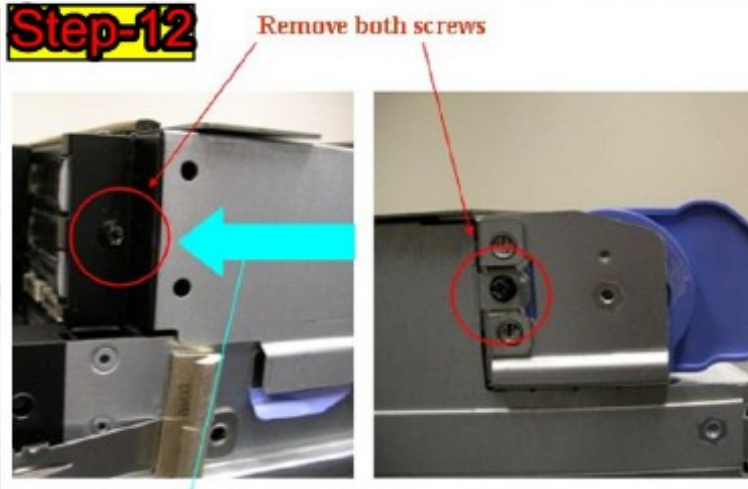
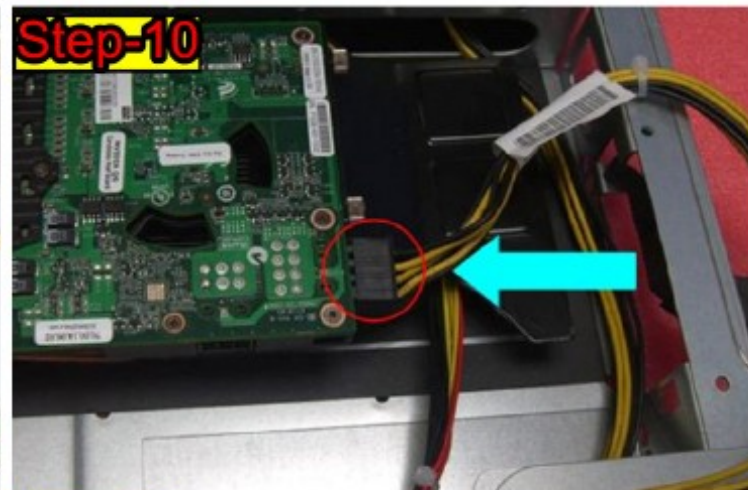
GPU1 Installation



GPU1 Installation

- Step 9: Re-install screws and snug tight
(Please use this torque : 6 In-lbs)
- Step 10: Plug GPU power cable and route cable
- Step 11: Lock PCI holder
- Step 12: Remove right-side slots retaining cover
(Please use this torque : 6 In-lbs)

GPU1 Installation



GPU2 Installation

- **Step 1:**
Slide M1060 halfway into side bay

Check point 1:

- M1060 extender in the groove of blue retainer bracket.
- Power cable for M1060 is not tangled (not yet connected to M1060).



GPU2 Installation

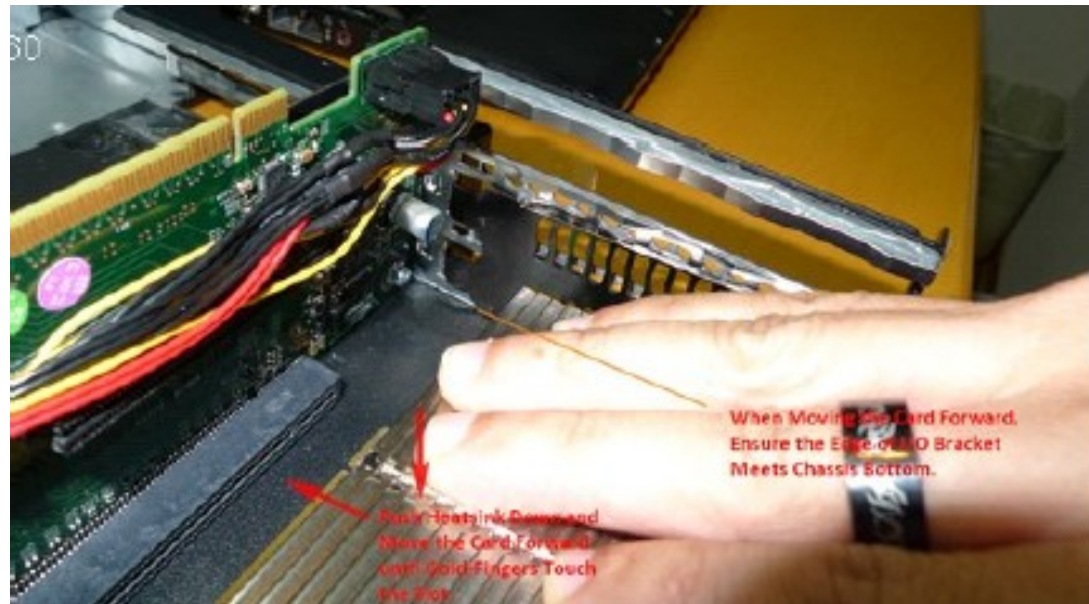
■ Step 2:

Push the heatsink down and move the card forward until the gold fingers stop at the slot on the riser card.

- Check point 2:

While forwarding the card, ensure the edge of I/O bracket meets chassis bottom.

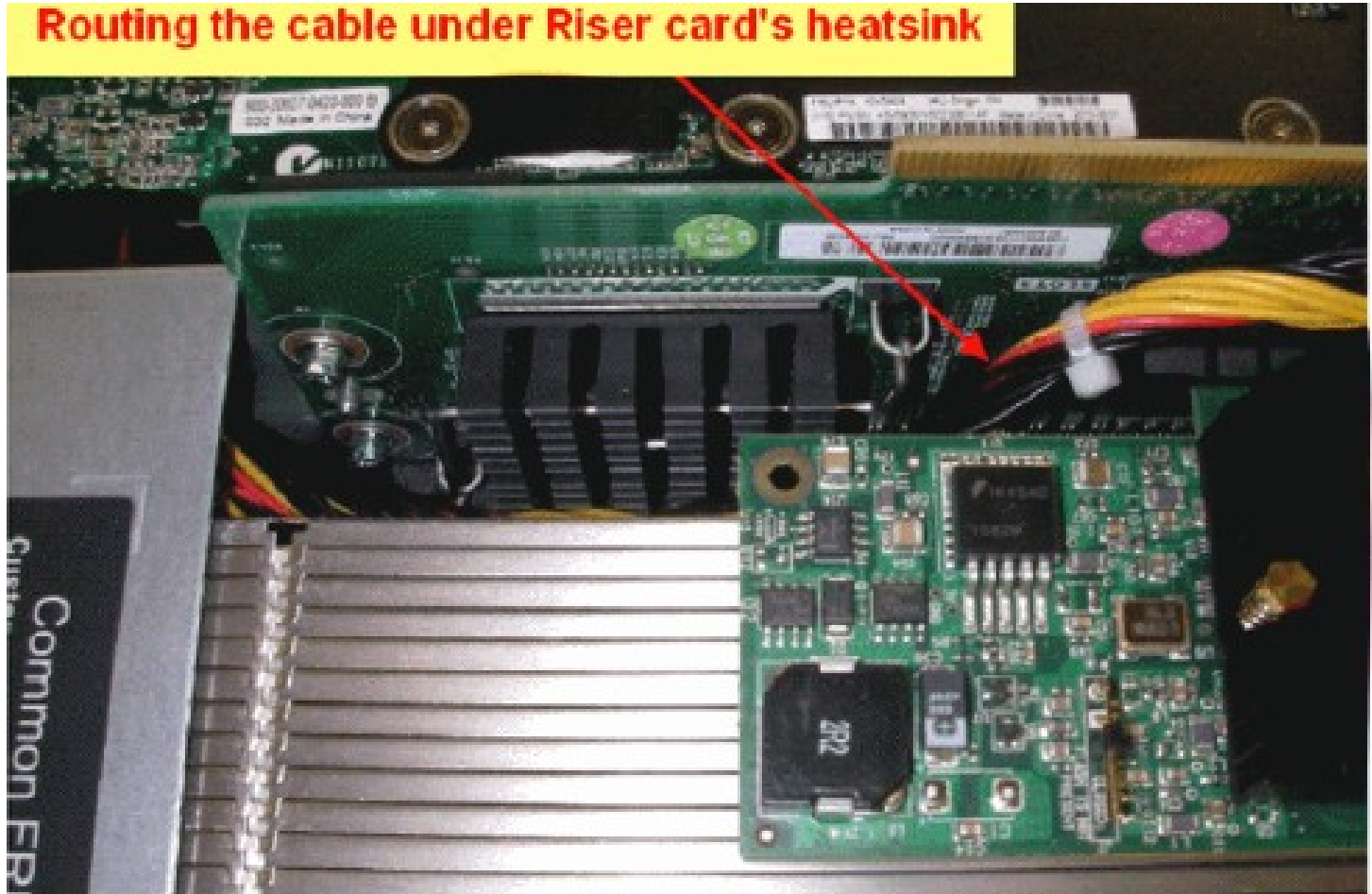
Do not lift M1060 during this step.



GPU2 Installation

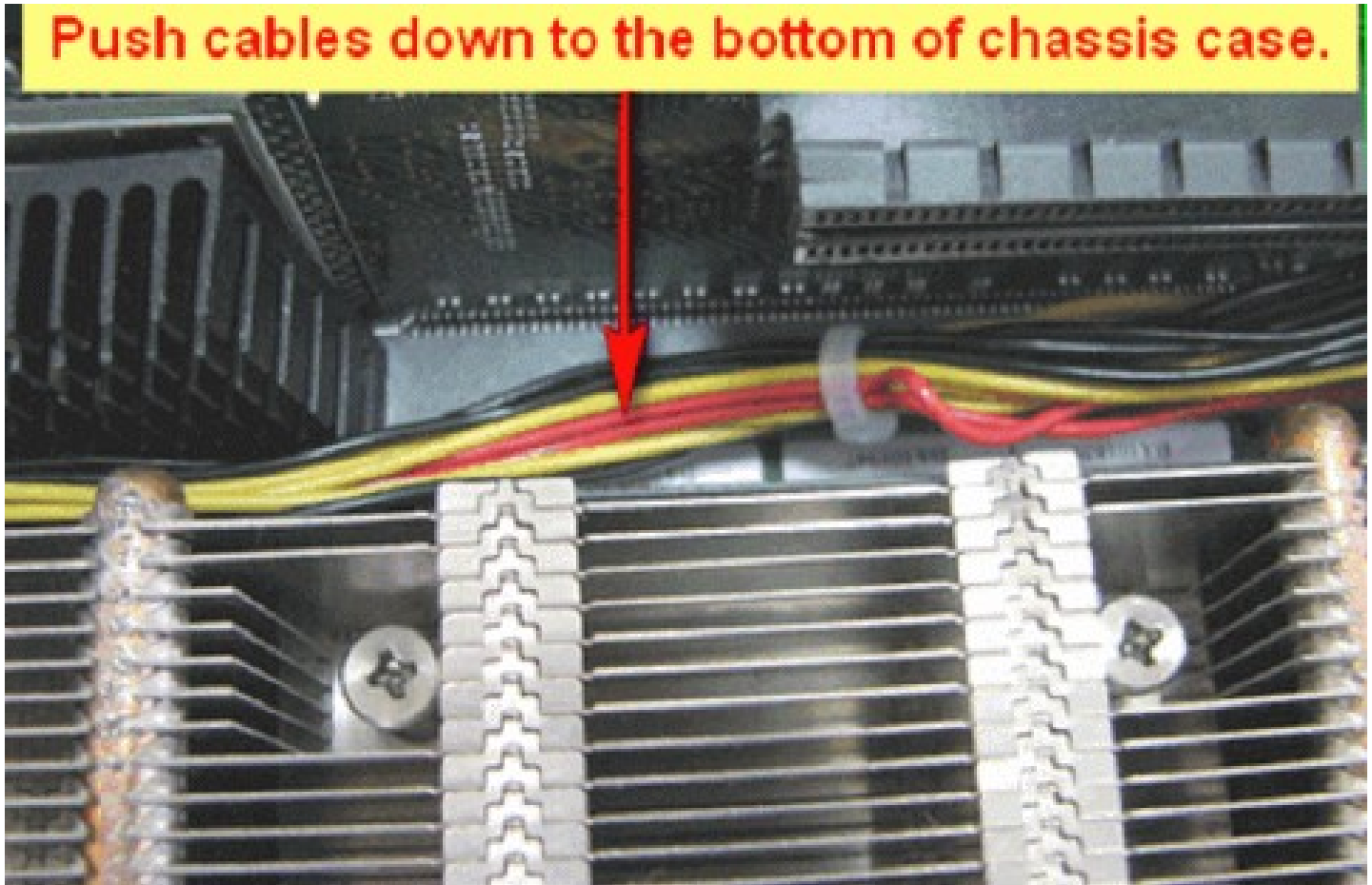
- Step 3:

Routing the cable under Riser card's heatsink



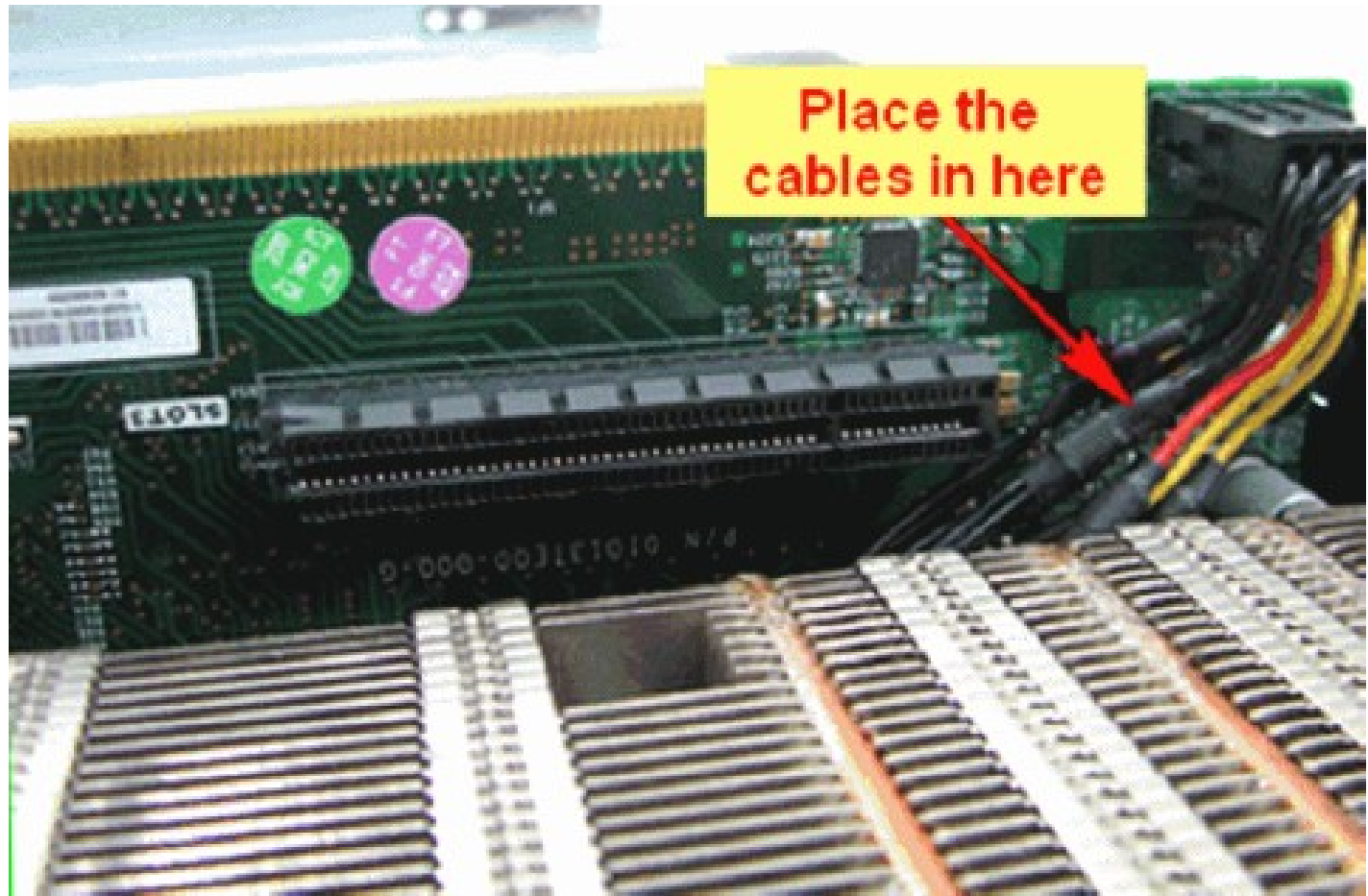
GPU2 Installation

- Step 4: **Push cables down to the bottom of chassis case.**



GPU2 Installation

- Step 5:



GPU2 Installation

- **Step 6:**

Push M1060 gently into slot

- Check point 3:

Do not lift M1060 during this step.

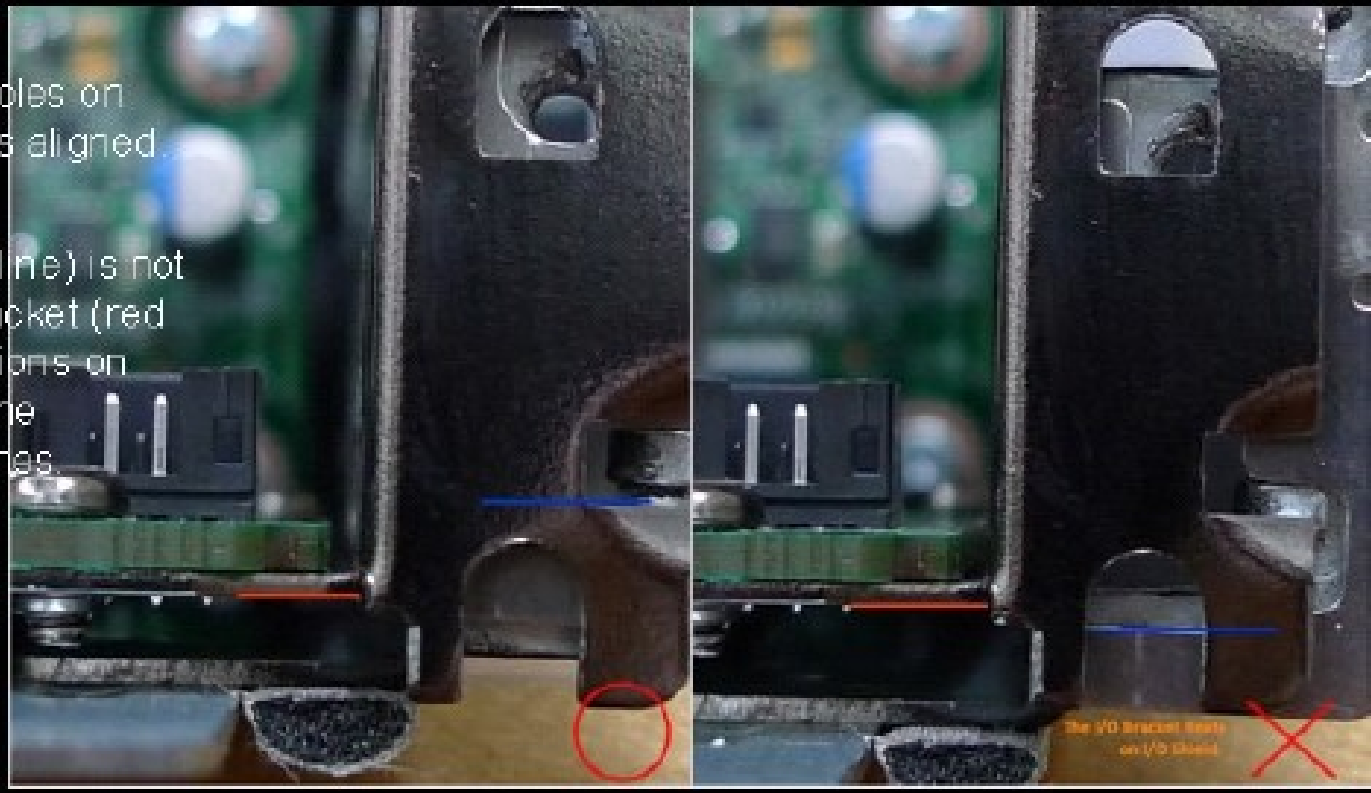
Check if screw holes on M1060 and chassis aligned. Or EMI shield (blue line) is not higher than I/O bracket (red line).

More illustrations on the next page for the definitions of the lines.

GPU2 Installation

Check Points

- Do not lift M1060 during this step.
- Check if screw holes on M1060 and chassis aligned.
Or,
- EMI shield (blue line) is not higher than I/O bracket (red line). More illustrations on the next page for the definitions of the lines.



GPU2 Installation

- **Step 7:**
Connect power cable and screw side cover on
(Please use this torque : 6 In-lbs)

