



## Server Packaging Instructions: BladeCenter T Chassis (8720 & 8730)

STG - Systems  
000210 Document hits

No. SG-P-01243 Rev. 8 Production Date: 01/28/2010  
Owner: Jeffrey Miller

**Online Version is the Master**

This document is designed to be used on-line. You are responsible to use only the "Production" version on-line.

\*\*\*\*\*

**IMPORTANT NOTICE:** The Federal Aviation Administration requires certification that packages shipped by air do not contain explosives, hazardous materials, incendiaries or other destructive devices. Therefore, just prior to sealing the carton, you must inspect its contents to confirm that it contains only parts specified on the IBM bill of materials. If the contents meet specifications, then seal the carton with IBM logo tape or another tamper evident indicator specified on the bill of materials. The logo tape or tamper evident seal will indicate that the carton can be certified to meet FAA standards for air shipment. If you discover parts or devices that appear suspicious (whether or not potentially explosive), carefully secure the carton on the line and notify IBM management promptly.

\*\*\*\*\*

- Information contained in this document is for reference purposes only.
- Process and Part Numbers may vary in each manufacturing location.
- Refer to local site procedures and Bill of Materials for any substitutions.
- No deviation is to be made to the overall assembly without prior written approval from the responsible Packaging Engineer.

## **Table of Contents**

- Section 1 - Applicable Systems, MTM Table
- Section 2 - Unit Packaging
- Section 3 - Manufacturing & Distribution Palletization
- Section 4 - Material Listing (BOM)

## **Section 1 - Applicable Systems, MTM Listing**

These packaging instructions apply to the following machine types:

**8720 & 8730 - BladeCenter T Chassis - IBM and OEM Versions**

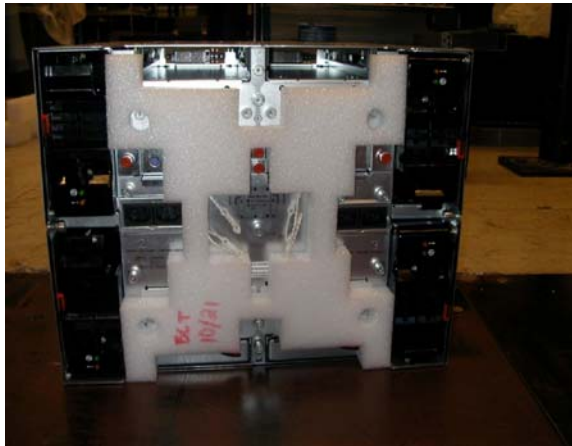
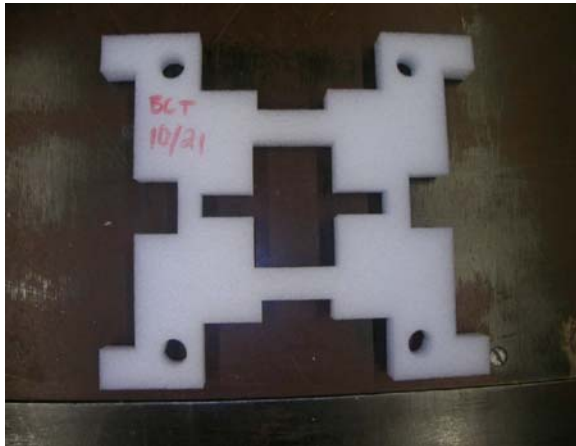
## **Section 2 - Unit Packaging**

**2.1** Inspect system to make sure there are no scuffs or scratches on unit.



**2.2** Make sure voltage setting is correct.

**2.3** Insert rear filler (22K8183) onto the back of the system as shown below.



**2.4** Align PBJ tray (22K8090) with half pallet (PN varies by site). Use windows and alignment marks to help center the tray.



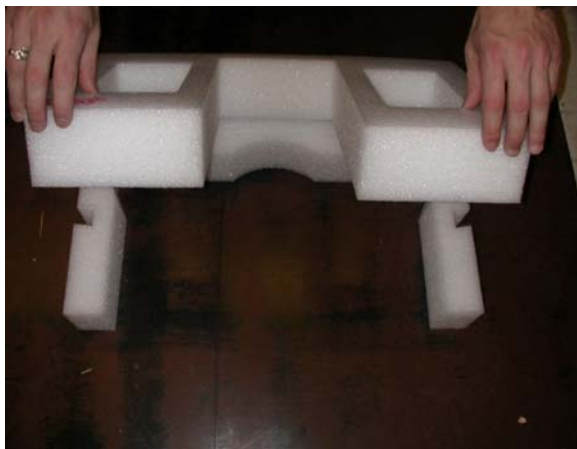
**2.5** Attach PBJ tray (22K8090) to pallet using a minimum of eight staples (22K8096) as shown.



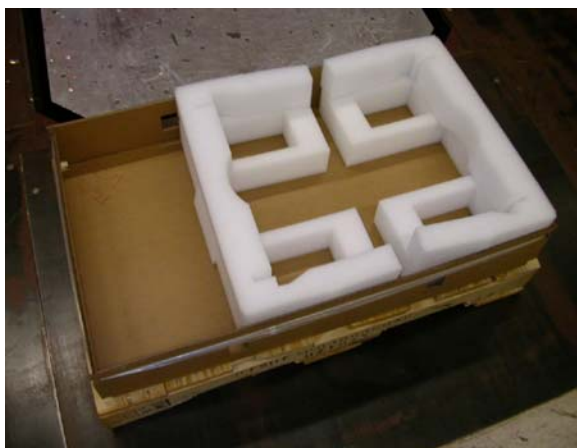
**2.6** Use Sanstrap (37L7558) to set up tray as shown below. The notches on each flap will help hold Sanstrap in place.



**2.7** Locate two universal fabricated cushions (22K8184) in preparation for placing in tray. Make sure they are set up correctly as shown below.



**2.8** Place cushions in tray making sure that the cushions are placed all the way to rear of the tray leaving space in the front for the shipgroup (as shown).



**2.9** Place bag (6165640 or 37L0557) over bottom cushions in preparation for loading unit.



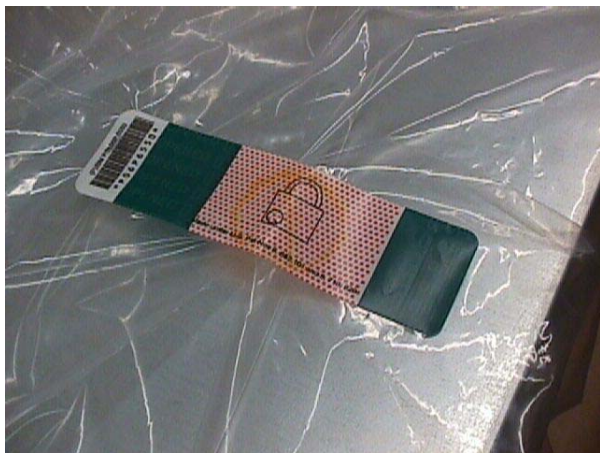


**2.10** Place unit in bottom cushions.

**Note:** Bag removed for demonstration purposes only.



**2.11** Making sure bag is pulled tight, use Tamper Label (06P6550) to seal edges of bag closed.



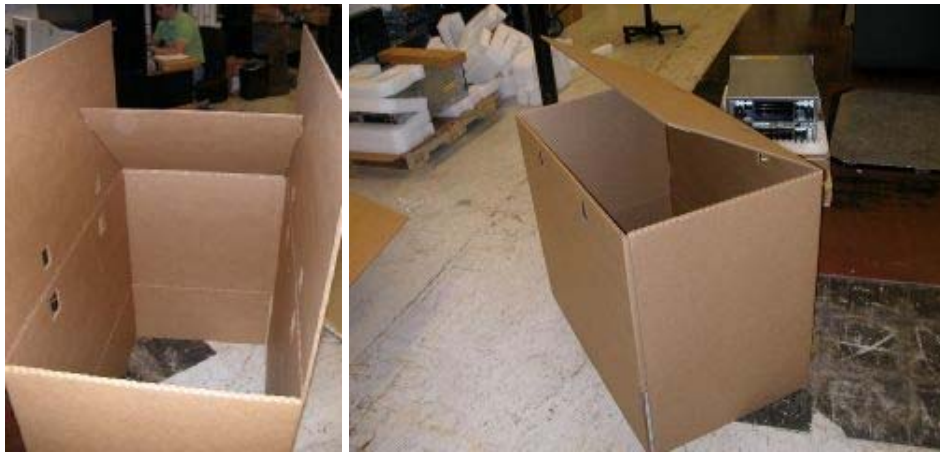
**2.12** Assemble front shipgroup (22K8182) as shown below.



**2.13** Place shipgroup (22K8182) in front of the system in the tray as shown below with opening away from system.



**2.14** Locate PBJ carton (44R3990 - IBM, 22K8111 - OEM) and fold bottom panels into carton, ends first.



**2.15** Place assembled carton (44R3990 - IBM, 22K8111 - OEM) over system and tray (NOTE: carton sits on the pallet outside the tray).



**2.16** Attach carton to tray/pallet assembly using four corrugated clips (37L0511).



**2.17** Place tamper label (74F8851) over one clip on carton.



**2.18** Locate two universal fabricated cushions (22K8184), and place on top of unit.



**2.19** Close the top of the carton and seal with tape.  
For IBM branded units, use IBM logo tape: 46D2114 (manual) or 46D2115 (automatic)  
For OEM blank carton units, use clear tape: 6272199





**2.20** Print and place carton labels on label tick marks located on carton. Reference QMX document SG-P-01486 "Special Packaging Labeling Guidelines" which may contain additional labeling requirements.

## **Section 3 - Manufacturing & Distribution Palletization**

### **Worldwide Sites**

**3.1** Servers are intended to ship individually on a half-pallet.

**Each server MUST ship out one server to a half-pallet (P/N 6038888 or P/N 7373961).**

**3.2** Secure load to pallet utilizing "Best of Breed" palletization methods. See 92F6168 - "Best of Breed" Pallet Unitization.

**NOTE:** To comply with TSA (Transportation Safety Administration - USA) guidelines intended to prevent human stowaways from getting inside packages and then onto aircraft, this product MUST be 4-way banded.



**3.3** Place two pallet labels (33G6283) on the front and left sides of the pallet load.

NOTE: Units are approved to be stacked 4 pallets high.

## **Section 4 - Materials Listing (BOM)**

### **BCT IBM Packaging BOM - 22K8082**

#### **WW Common Packaging Components BOM - 22K8185**

<b>Part Number</b>	<b>Quantity</b>	<b>Description</b>
22K8182	1	BladeCenter Shipgroup
22K8090	1	BladeCenter Pallet Tray (notched)
22K8096	8	Staple for attachment of pallet tray to pallet
44R3990	1	BladeCenter PBJ Carton
22K8184	4	BladeCenter T Universal Fabricated Cushions
33G9780	2	Carton Label
37L0511	4	Corrugated Clips
37L7558	1	Sanstrap
6165640	1	Poly bag
22K8183	1	Rear Filler
46D2114 or 46D2115	as needed	IBM Logo Tape

### **BCT OEM Packaging BOM - 22K8188**

#### **WW Common Packaging Components BOM - 22K8189**

<b>Part Number</b>	<b>Quantity</b>	<b>Description</b>
22K8182	1	BladeCenter Shipgroup
22K8090	1	BladeCenter Pallet Tray (notched)
22K8096	8	Staple for attachment of pallet tray to pallet
22K8111	1	BladeCenter OEM PBJ Carton
22K8184	4	BladeCenter Universal Fabricated Cushions
33G9780	2	Carton Label
37L0511	4	Corrugated Clips
37L7558	1	Sanstrap
6165640	1	Poly bag
22K8183	1	Rear Filler
6272199	as needed	Clear Tape

- ▶ **General Information**
- ▶ **Summary of Changes**
- ▶ **Approval Information**

---

© 2010 IBM Corporation, All Rights Reserved Worldwide

End of Document
-----------------

[Terms of use](#)