



**Server Packaging Instructions: BladeCenter HT Chassis
(8740, 8750)**

STG - Systems
000225 Document hits

No. SG-P-01492 Rev. 5 Production Date: 02/02/2010
Owner: Jeffrey Miller

Online Version is the Master

This document is designed to be used on-line. You are responsible to use only the “Production” version on-line.

IMPORTANT NOTICE: The Federal Aviation Administration requires certification that packages shipped by air do not contain explosives, hazardous materials, incendiaries or other destructive devices. Therefore, just prior to sealing the carton, you must inspect its contents to confirm that it contains only parts specified on the IBM bill of materials. If the contents meet specifications, then seal the carton with IBM logo tape or another tamper evident indicator specified on the bill of materials. The logo tape or tamper evident seal will indicate that the carton can be certified to meet FAA standards for air shipment. If you discover parts or devices that appear suspicious (whether or not potentially explosive), carefully secure the carton on the line and notify IBM management promptly.

- Information contained in this document is for reference purposes only.
- Process and Part Numbers may vary in each manufacturing location.
- Refer to local site procedures and Bill of Materials for any substitutions.
- No deviation is to be made to the overall assembly without prior written approval from the responsible Packaging Engineer.

Table of Contents

Section 1 - Unit Packaging
Section 2 - Manufacturing & Distribution Palletization
Section 3 - Material Listing (BOM)

Section 1 - Unit Packaging

- 1.1** Inspect system to make sure there are no scuffs or scratches on unit.
- 1.2** Make sure voltage setting is correct.
- 1.3** Align PBJ tray (43X3215) with pallet (PN 43X3211). Use alignment tabs to help center the tray.



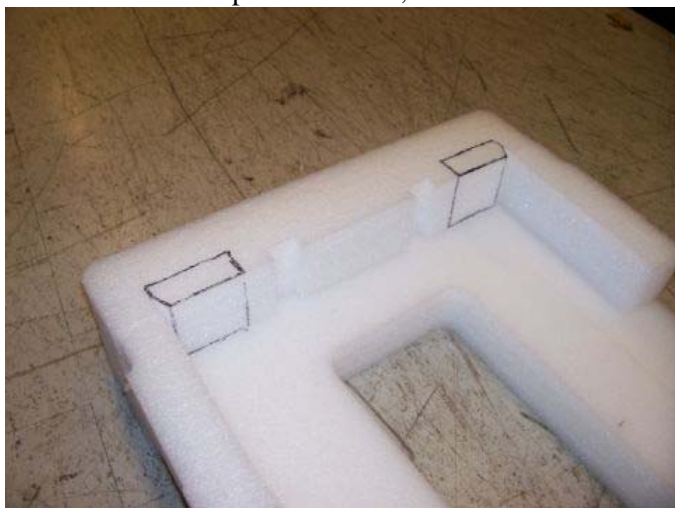
1.4 Attach PBJ tray (43X3215) to pallet using a minimum of eight staples (22K8096) as shown.



1.5 Locate one universal fabricated cushion (43X3212) in preparation for placing in tray. Assemble the cushion by folding and locking the sides in place



NOTE: For all DC powered units, two tear-outs must be removed (shown in black outline)



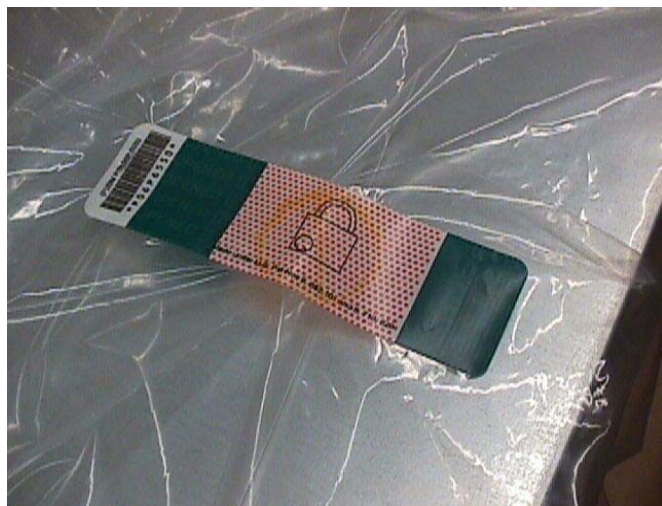
1.6 Place cushion into tray.

1.7 Place bag (43X3217) over bottom cushions in preparation for loading unit.



1.8 Place unit in bottom cushion. Make sure the system is fully seated in the cushions. The front of the system is the flat face of the cushion. The notched side is for the rear.

1.9 Making sure bag is pulled tight, use Tamper Label (06P6550) to seal edges of bag closed.

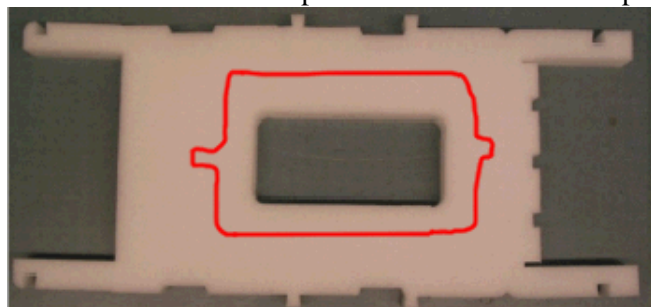


NOTE: Bag has been removed from all further pictures for clarity.

1.10 Locate one universal fabricated cushion (43X3212). Assemble the cushion by folding and locking the sides in place.

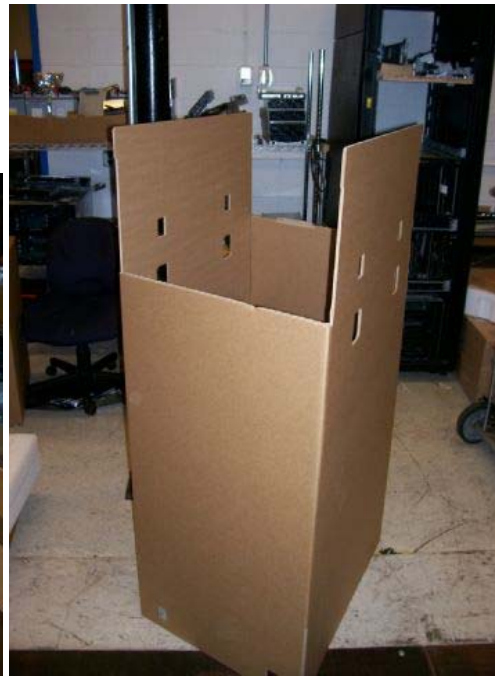
NOTE: Tearouts must be removed from top cushion for DC powered models as shown previously.

1.11 Remove the center portion of the cushion and place on front of system.



1.12 Place top cushion on system, this will help hold front cushion in place.

1.13 Locate PBJ carton (43X3213 - IBM or 44R3975 - OEM) and fold bottom panels into carton, ends first.



1.14 Place assembled carton (43X3213 - IBM or 44R3975 - OEM) over system and tray (NOTE: carton sits on the pallet outside the tray).

1.15 Attach carton to tray/pallet assembly using four corrugated clips (37L0511).



1.16 Place tamper label (74F8851) over two clips on carton.



1.17 Locate and assemble shipgroup tray (43X3216) and divider (43X3128) placing divider in shipgroup with the large space toward the front of the carton.



1.18 Load shipgroup with required contents.

NOTE: If shipping configured with 4post rail kit, place contents of kit into the small space in the shipgroup





1.19 Insert completed shipgroup (43X3216) into system carton on top of cushions.



***ALTERNATE:** If contents exceed space available in the shipgroup, A second shipgroup can be added using the process shown below*

***A1.** With the minor flaps open, tape the major flaps of the carton shut.*

For IBM branded units, use IBM logo tape: 46D2114 (manual) or 46D2115 (automatic)

For OEM blank carton units, use clear tape: 6272199



A2. Locate and assemble shipgroup tray - small (43X3216) or large (43X3218).

A3. Place assembled and filled shipgroup on top of system carton and attach with 4 clips (37L0511).



A4. Place tamper label (74F8851) over two clips holding shipgroup to system carton.



*NOTE: If external shipgroup is used, DO NOT STACK completed units
END ALTERNATE*

1.20 Close the top of the carton and seal with tape.

For IBM branded units, use IBM logo tape: 46D2114 (manual) or 46D2115 (automatic)

For OEM blank carton units, use clear tape: 6272199



1.21 Print and place carton labels on label tick marks located on carton. Reference QMX document SG-P-01486 "Special Packaging Labeling Guidelines" which may contain additional labeling requirements.

Section 2 - Manufacturing & Distribution Palletization

Worldwide Sites

2.1 Servers are intended to ship individually on a pallet.

Each server MUST ship out one Server to a pallet (P/N 43X3211).

2.2 Secure load to pallet utilizing "Best of Breed" palletization methods. See 92F6168 - "Best of Breed" Pallet Unitization.

NOTE: To comply with TSA (Transportation Safety Administration - USA) guidelines intended to prevent human stowaways from getting inside packages and then onto aircraft, this product MUST be 4-way banded.



2.3 Place two pallet labels (33G6283) on the front and left sides of the pallet load.

NOTE: Units are approved to be stacked 4 pallets high. Units with external shipgroup are not approved for stacking.

Section 3 - Materials Listing (BOM)

IBM Version Packaging BOM - 22K8085

WW Common Packaging Components BOM - 43X3207

Part Number	Quantity	Description
43X3215	1	800 X 600mm Pallet Tray
22K8096	8	Staple for attachment of pallet tray to pallet
33G9780	2	Carton Label
37L0511	4	Corrugated Clips
43X3213	1	BladeCenter HT PBJ Carton - IBM
43X3216	1	BladeCenter HT Shipgroup Tray
43X3128	1	BladeCenter HT Shipgroup Tray Divider
43X3212	2	BladeCenter HT Universal Fabricated Cushions
43X3217	1	BladeCenter Poly bag
74F8851	2	Tamper Label
46D2114 or 46D2115	as needed	IBM Logo Tape

OEM Version Packaging BOM - 44R3965

WW Common Packaging Components BOM - 44R3966

Part Number	Quantity	Description
43X3215	1	800 X 600mm Pallet Tray
22K8096	8	Staple for attachment of pallet tray to pallet
33G9780	2	Carton Label
37L0511	4	Corrugated Clips
44R3975	1	BladeCenter HT PBJ Carton - OEM
43X3216	1	BladeCenter HT Shipgroup Tray
43X3128	1	BladeCenter HT Shipgroup Tray Divider
43X3212	2	BladeCenter HT Universal Fabricated Cushions
43X3217	1	BladeCenter Poly bag
74F8851	2	Tamper Label
6272199	as needed	Clear Tape

- ▶ **General Information**
- ▶ **Summary of Changes**
- ▶ **Approval Information**

End of Document

[Terms of use](#)