

Before you install your new Mezzanine card, check to make sure that there is no visible damage that may have occurred during shipping.

Note: If the card looks damaged contact your customer representative immediately.

Physical Installation

Note: This device is intended for use only with UL listed IBM BladeCenter units.

ESD Connection

Before starting any procedure:

1. Put an ESD prevention wrist strap on your wrist, and make sure there is good contact between your body and the strap.
2. Plug the other end of the wrist strap to a valid ground. Make sure that this is a tight fit.

Installing the Card

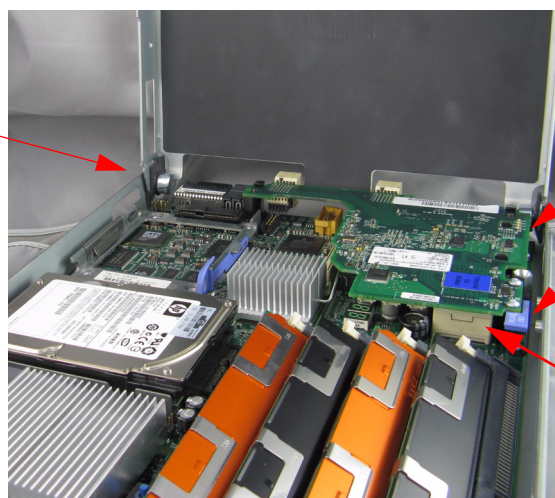
3. Remove the blade from the server.
4. Set the blade on your work table.
5. Remove the cover from the blade. Press on the two blue squares (one on each side of the blade) and lift up while pressing in.



Press on the two blue square. There is an identical one on the other side.

6. Pull the cover forward and it will come off.

Hinge holding the cover

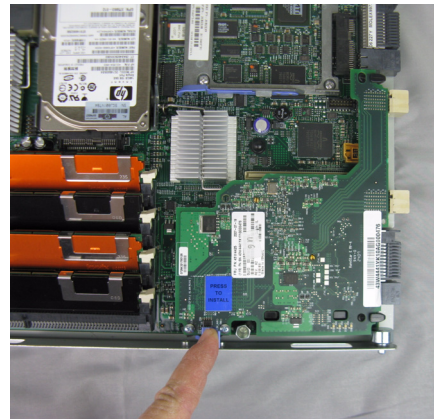


The mezzanine card

Release lever

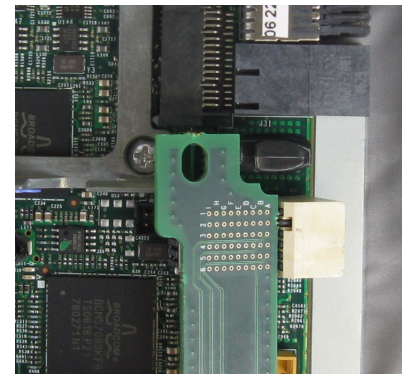
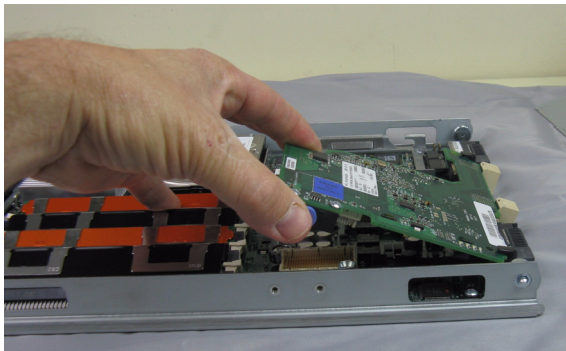
Connector fully inserted into its holder

7. Lift up on the release lever until it is vertical.



8. Lift gently on the card while pulling the card from the plastic holders.

Note: Beware the parts in the blade may be very hot!



9. Insert the new card into the plastic holders. The card will lay almost flat when inserted correctly. Make sure that the pin connector is properly inserted. See picture below.
10. Press the card firmly into place. This may take considerable pressure, and you should feel the card snap in.



11. Replace the blade cover. Make sure that the cover snaps into place.
12. Insert the blade into the server.