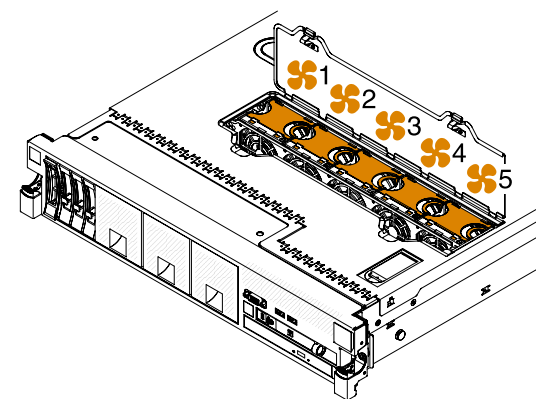
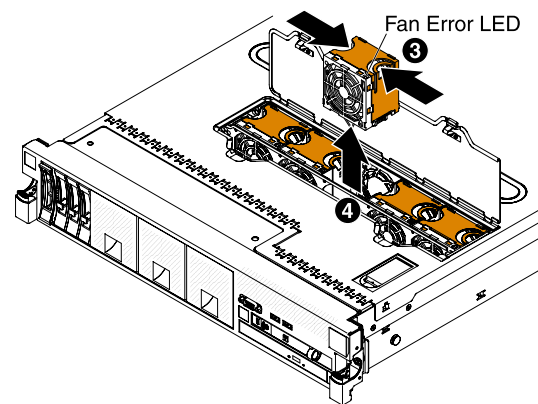
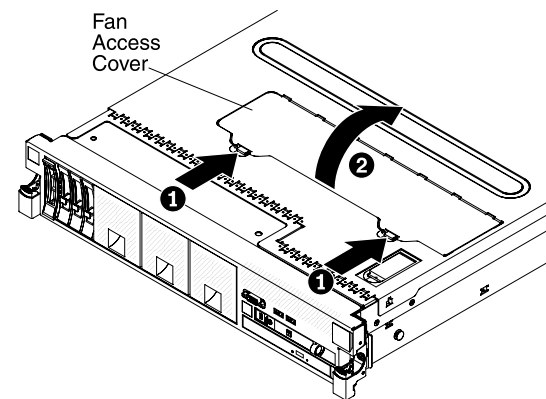


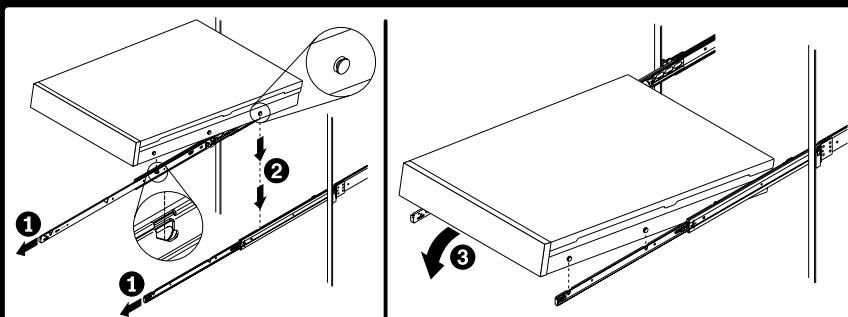
Hot-Swap Fans



NOTE: For optimal cooling performance, do not run the system with the fan access cover removed for an extended period of time. Replace the fan access cover immediately after replacing a fan.

User Information

NOTE: Replaceable parts list is on underside of this cover.

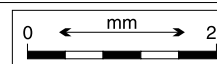


**For additional
service information,
see underside of
this top cover.**

MANUFACTURING NOTES:

1. Graphics shall conform to the Artwork above.
2. Ink colors to match PMS BlackC, PMS 1525C and PMS 108C.
3. Font: Helvetica
4. Refer to label print part number 80Y9925 for manufacturing and material notes.

Must conform to Eng. Spec:	80X2324
Tolerances unless noted: Linear \pm	0.3



Art Part number
69Y2313

EC number
N24806N

Date
4/2/10

ID approval

Eng approval
JB

Title	Labels, Top Cover Sheet
-------	-------------------------

This document is the property of IBM. Its use is authorized only for responding to a request for quotation or for the performance of work for IBM. All questions must be referred to the IBM purchasing department.