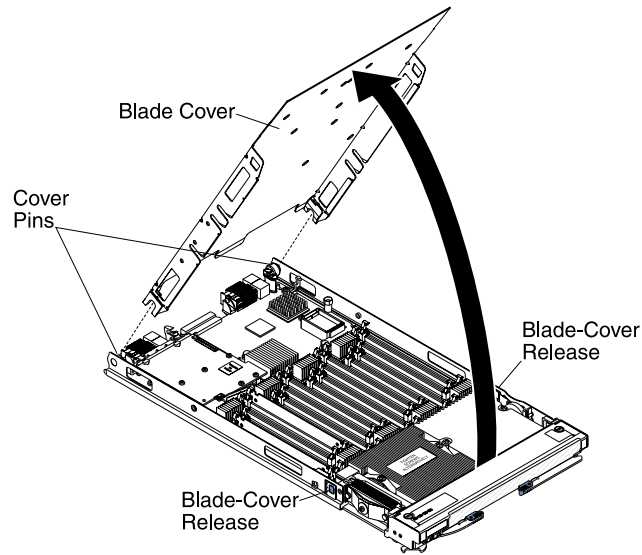


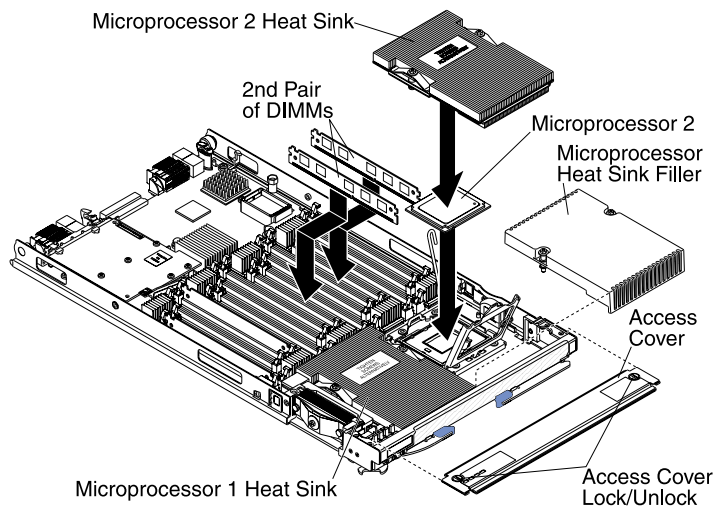
Blade Service Information



Blade Cover



Microprocessor / Memory Option



NOTES:

- Use microprocessors with same cache size and type, same clock speed, and identical internal and external clock frequencies.
 - Remove the microprocessor heat sink filler.
- Then, remove the microprocessor socket cover, if present, and lift the release lever before installing the microprocessor.
- ATTENTION: Do not touch exposed pins of the microprocessor socket.
- - Remove the grease shield from the bottom of the heat sink before installing. Do not touch thermal grease. If thermal grease becomes contaminated, call for service.
- - Tighten captive screws, alternating between screws until tight.
- Refer to your *Installation and User's Guide* for additional information.

Memory Installation Order:

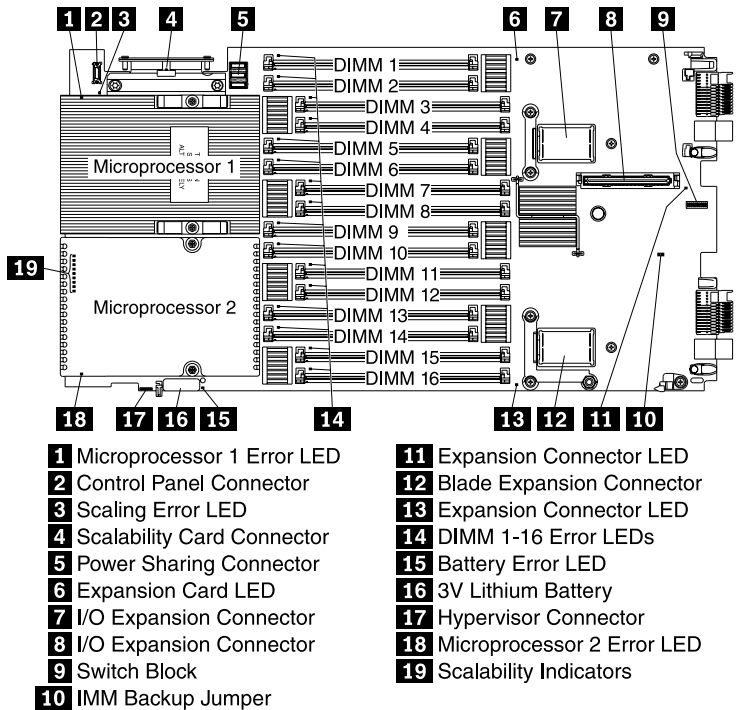
For single microprocessor, install DIMMs in the following order.
DIMM Slots: 1 & 4, 5 & 8, 2 & 3, 6 & 7

For dual microprocessors, install DIMMs in the following order.
DIMM Slots: 1 & 4, 9 & 12, 5 & 8, 13 & 16, 2 & 3, 10 & 11, 6 & 7, 14 & 15

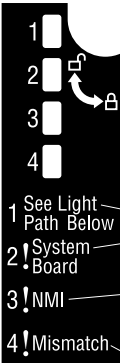
NOTES:

- DIMMs must be installed in pairs.
- DIMMs must match size, speed, and technology within pairs.
- Use only registered (buffered) ECC VLP DDR3 DIMMs.
- Refer to your *Installation and User's Guide* for advance memory information including mirroring.
- In scaled systems, DIMMs should be balanced between blades for optimal performance.

System Board



Light Path Diagnostics

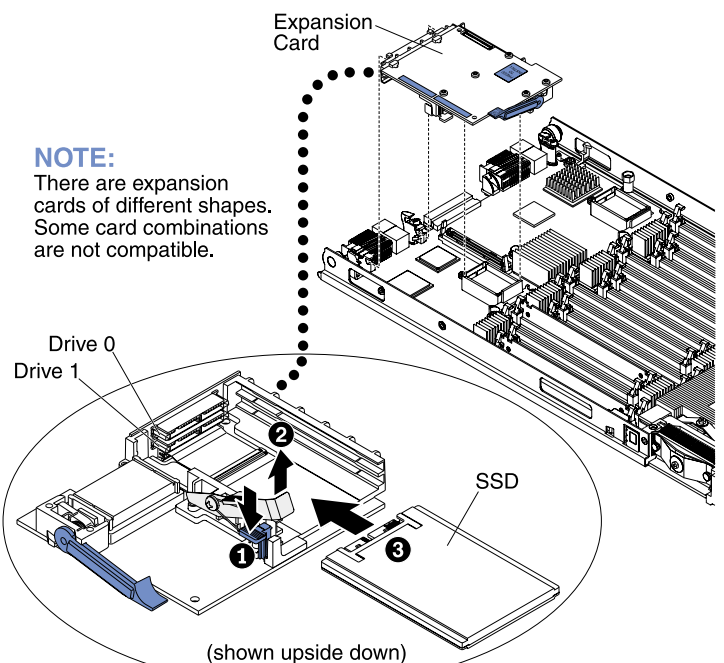


NOTES:

- Press power button on front panel to activate light path when blade is removed from the chassis.
- MT button lights when light path is activated if the capacitor is charged.
- Look for LEDs through the front bezel for possible CPU errors when light path is activated.

- 1 See Light Path Below - Check light path on blade below for errors.
- 2 System Board - Reboot blade server. If error still exists, you may need to replace system board.
- 3 NMI - Check event log for additional information. Reboot blade server.
- 4 Mismatch - If error still exists, you may need to replace system board. Check microprocessors to ensure they are compatible.

Expansion Option



NOTE:

There are expansion cards of different shapes. Some card combinations are not compatible.

288 mm

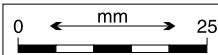
224.4 mm

MANUFACTURING NOTES:

1. Graphics shall conform to the Artwork above.
2. Refer to label print part number 68Y7909 for manufacturing and material notes.
3. Ink colors to match PMS 2718C and PMS Black C.

Must conform to Eng. Spec: 80X2324
Tolerances unless noted: Linear \pm 0.3

SI
metric



Art Part number
68Y7910

EC number

N24615J
N24615B

Date

6/11/10
3/9/10

ID approval

JM

Eng approval

BK

Title Label, System Service

This document is the property of IBM. Its use is authorized only for responding to a request for quotation or for the performance of work for IBM. All questions must be referred to the IBM purchasing department.