

This filler is required for EMC compliance. Only remove this filler to install a QPI wrap card or QPI cable.

10 mm

80 mm

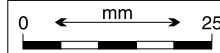
Red Outline is for Die Cut ONLY!

MANUFACTURING NOTES:

1. Graphics shall conform to the Artwork above.
2. Ink color to match PMS BlackC.
3. Font: Helvetica
4. Refer to label print part number 59Y4907 for manufacturing and material notes.

Must conform to Eng. Spec:	80X2324
Tolerances unless noted: Linear	0.3

SI  
metric



Art Part number

59Y4908

EC number

N26099G

Date

3/29/10

ID approval

RA

Eng approval

SW

Title Label, QPI Filler

This document is the property of IBM. Its use is authorized only for responding to a request for quotation or for the performance of work for IBM. All questions must be referred to the IBM purchasing department.