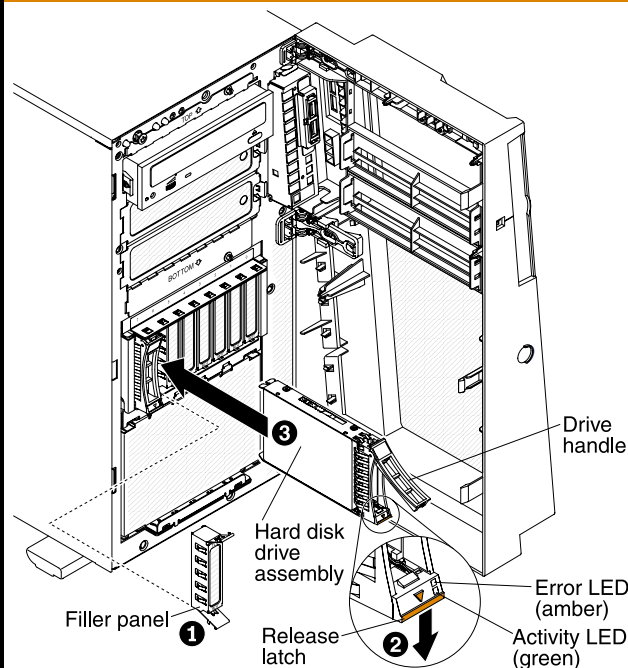


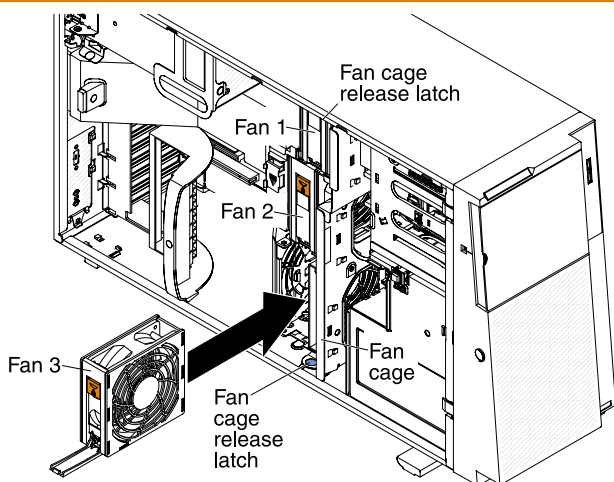
System Service Information



Hot-Swap Hard Disk Drives

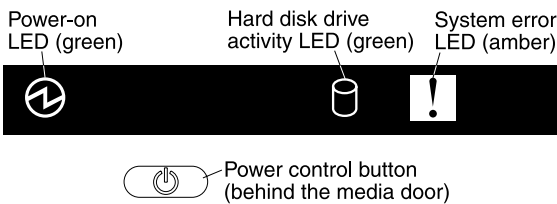


Hot-Swap Fans

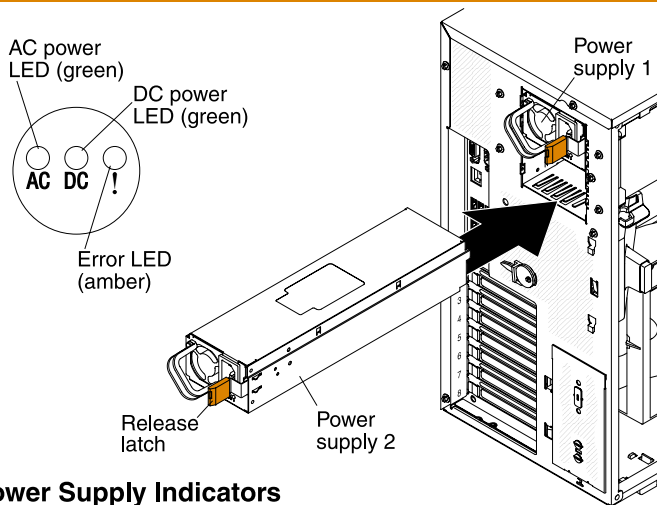


NOTE: The fan cage does not have to be removed to install hot-swap fans.

Operator Information Panel



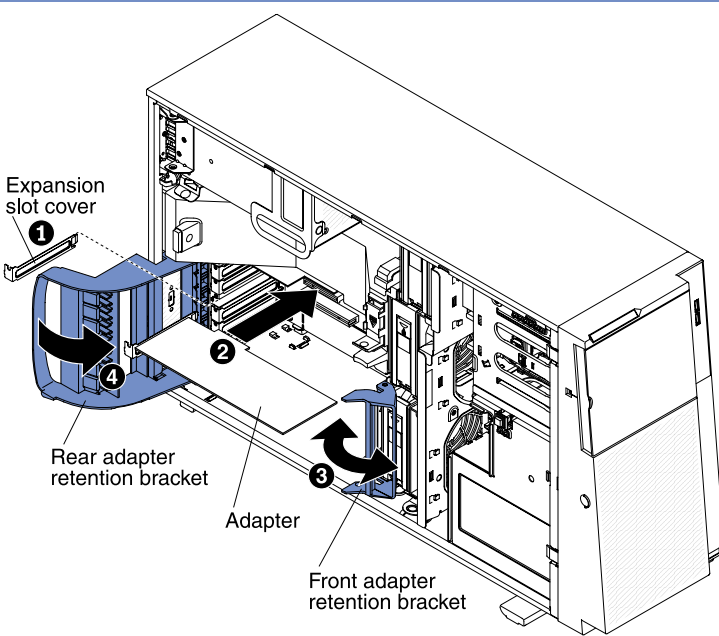
Hot-Swap Power Supplies



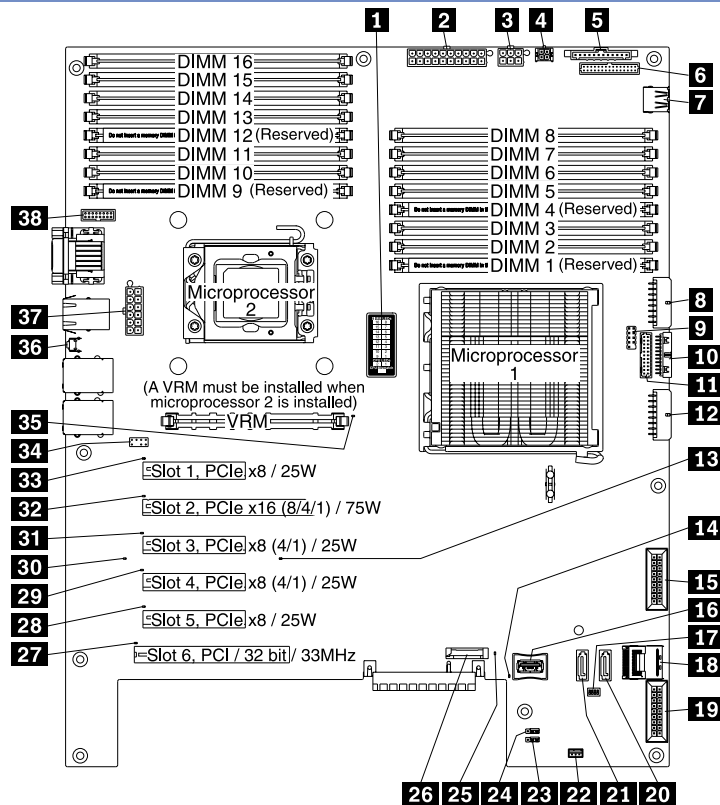
Power Supply Indicators

AC	DC	Error	Description and Action
On	On	Off	The power supply is on and operating correctly.
On	Off	Off	Action: 1) Reseat the power supply. 2) If system board error LED is on, replace system board. 3) If system board error LED is not on, replace power supply.
Off	On	Off	The power supply has failed. Action: Replace the power supply.
Off/On	Off/On	On	The power supply has failed. Action: Replace the power supply.
Off	Off	Off	There is an AC power problem. Possible causes: 1) There is no AC power to the power supply. Actions: Verify that: • The power cord is properly connected to the server. • The power outlet functions correctly. 2) The power supply has failed. Action: Replace the power supply.

PCI Express/PCI-X Adapters



System Board



- | | |
|----------------------------------|--------------------------------|
| 1 DIMM/Microprocessor Error LEDs | 20 SATA 0 |
| 2 Power 1 | 21 SATA 1 |
| 3 Reserved | 22 Wake on LAN |
| 4 Optical Power | 23 Clear CMOS Jumper |
| 5 Front Operator Panel | 24 UEFI Boot Recovery Jumper |
| 6 Reserved | 25 Battery Error LED |
| 7 USB Tape | 26 3V Lithium Battery |
| 8 Reserved | 27 Slot 6 Error LED, PCI |
| 9 Front USB | 28 Slot 5 Error LED, PCIe |
| 10 SAS/SATA Backplane Config | 29 Slot 4 Error LED, PCIe |
| 11 Reserved | 30 H8 Heartbeat LED |
| 12 SAS/SATA Backplane Power | 31 Slot 3 Error LED, PCIe |
| 13 IMM Heartbeat LED | 32 Slot 2 Error LED, PCIe |
| 14 System Board Error LED | 33 Slot 1 Error LED, PCIe |
| 15 Reserved | 34 Virtual Media Key Connector |
| 16 USB Hypervisor Key | 35 VRM Error LED |
| 17 Switch Block 6 | 36 NMI Button |
| 18 SATA Backplane Signal | 37 Power 3 |
| 19 Fans 1, 2, and 3 | 38 Power 2 |

NOTE: When installing a second microprocessor, be sure to install a VRM.

Memory (Non-Mirrored)

Microprocessor #	DIMM Install Order
1	3, 6, 8, 2, 5, 7
2	11, 14, 16, 10, 13, 15

Memory (Mirrored)

Microprocessor #	DIMM Install Order
1	3&6, 2&5
2	11&14, 10&13

ATTENTION: For proper cooling, do not leave cover off for more than 2 minutes at a time while system is running.

Red Outline is for Die Cut ONLY!

336 mm

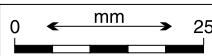
Red Outline is for Die Cut ONLY!

MANUFACTURING NOTES:

1. Graphics shall conform to the Artwork above.
2. Ink colors to match PMS BlackC, PMS 1525C, and PMS 2718C.
3. Refer to label print part number 49Y7016 for manufacturing and material notes.

Must conform to Eng. Spec: 80X2324
Tolerances unless noted: Linear \pm 0.3

SI
metric



IBM

Art Part number
49Y7017

EC number
L79970F

Date
8/18/09

ID approval
RA

Eng approval
ET

Title Label, System Service (Lenovo)

This document is the property of IBM. Its use is authorized only for responding to a request for quotation or for the performance of work for IBM. All questions must be referred to the IBM purchasing department.