



Customer Specified Placement

A Better Idea – *What, Why & How*

Customer Specified Placement (CSP) - Agenda

- ***What is it?***
- ***What does IBM offer?***
- ***What are the benefits?***



IBM provides flexibility

IBM defines placement

- IBM will determine an optimum placement of all known devices within an order at no additional charge to the customer
- Based on performance of a Single Partition System
- eConfig diagram does not flow to manufacturing

- OR -

Customer defines placement (CSP & CSRP)

- The customer may request specific placement of I/O adapters and/or disk drives in certain locations.
- The customer may also request specific placement of components within a certain rack.
- IBM will provide such placement at the time the order is built.
- eConfig diagram now flows to manufacturing enabling customer definition to be built when CSP is selected.



*What does
IBM offer?*



IBM offers exact build-to-order capabilities that respond to customer specifications.

Placement in IBM Manufacturing Offerings

Offer exact build-to-order capabilities that respond to customer specifications

Customer Specified Placement (CSP)

Adapter and Disk Placement (New Systems Only)

Specific adapters in specific slots

Specific drives in specific bays

- ✓ Feature 8453 (no charge feature)
 - ✓ IBM POWER Mid Range and High End systems
- ✓ Feature 0456 (chargeable feature)
 - ✓ IBM POWER Low End systems

Customer Specified Rack Placement (CSRP)

Component Placement in the Rack (New Systems Only)

Factory integration of system modules and enclosures at defined EIA locations

⇒ Rack tipping safety criteria are checked when this option is selected

- ✓ Feature 0469 (chargeable feature)
 - ✓ IBM POWER racks: 7014 rack support for all 19" wide factory installed products
24" wide products, define rack placement via feature code

Flexibility Provided by CSP/CSRP/LPAR *(New Systems Only)*

■ Implementation

- Plan for placement
- Configure your system using eConfig
 - Indicate feature code “0453/0456/8453” for CSP; feature code “0469” for CSRP
 - **The eConfig drag and drop diagram interface can be used to initiate orders requesting hardware placement**
 - **If the SPT is used for planning, you should export your data to eConfig to ensure placement data is preserved**
 - Submit your order to IBM through your normal process
- IBM Manufacturing will use the CFReport placement definition to custom build the system
- Published availability is maintained for placement in manufacturing
- **The system will arrive as the customer specified**

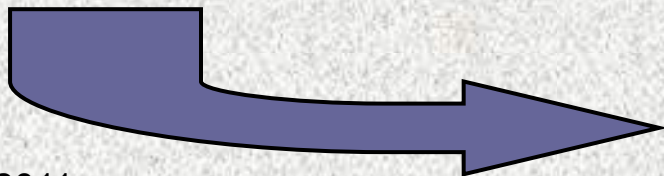
Benefits

What are the benefits?



- **Customers get the systems they ordered!**
 - Systems come configured to the customer's specifications
 - DASD protection by partition initialized
 - Systems are up and running faster
- **Customer personnel and Service personnel no longer have to rebuild the system**
- **Space in customer's location is no longer required to rebuild the system**
- **Quality is improved as components are not exposed to handling damage**
- **Customers know that their configuration will work before they try it**
 - This offering uses existing configuration and validation processes
 - System tested in manufacturing is not changed at installation
- **Improved Risk Management for Customer and Account Team**
- **You can still select "Best Practices"**

- **Lower Cost to Implement**
- **Saves Time**
- **Higher Quality**
- **Improved Customer Satisfaction**
- **Reduced Implementation Risk**



08/26/2011

Single Submit

Customer Feedback

- **Office Depot installed two large 595 systems with CSP**

Susan Yoskin, Sales Specialist

“ I think it was a wonderful service. Office Depot has an enormous amount of LPAR systems, and I would say this saved days of work, as well as CE installation costs.”

- ⇒ **Saved installation time**
- ⇒ **Reduced installation cost**
 - ✓ **Customer Personnel**
 - ✓ **IBM Personnel**
- ⇒ **Improved Customer Satisfaction**
- ⇒ **Improved Quality**

Customer Feedback

- **The CSP process was used to configure several 575's for a customer's DB2 Data Warehouse following the BCU standard.**

Johnnye Tamaru, AIX Specialist, Field Technical Sales Support

“The DB2 BCU standard is very stringent in the type, number and placement of adapters. By using the CSP process, we eliminated several hours of CE time needed to re-position the adapters to obtain correct placement along with the accompanying increased risk of equipment breakage. The CSP-based system reduced the on-site activities required to have a system working to an exact specification.”

- ⇒ **Saved installation time and cost**
- ⇒ **Eliminated risk of equipment breakage**
- ⇒ **System delivered to exact specification**
- ⇒ **Improved Customer Satisfaction**
- ⇒ **Improved Quality**

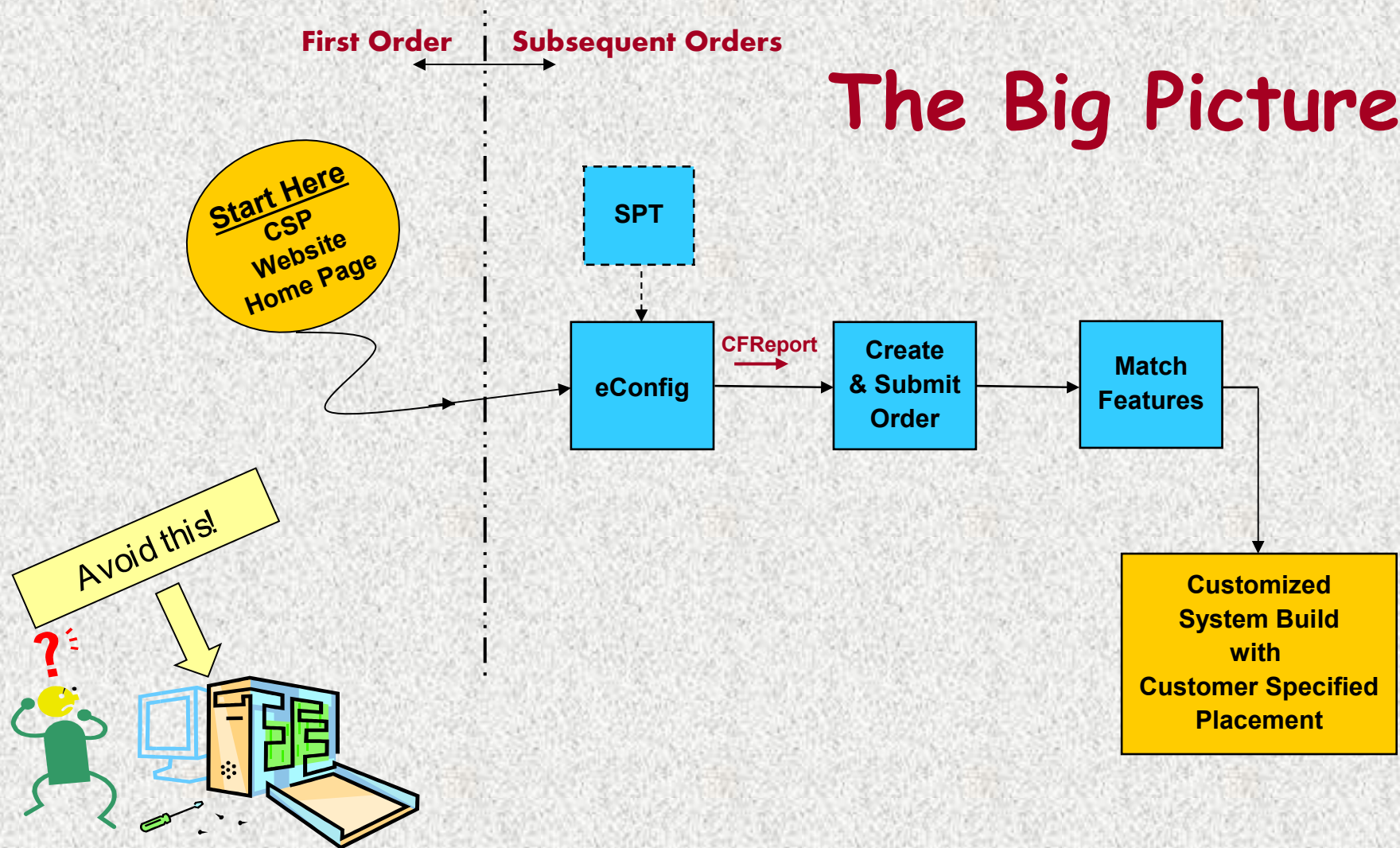


How do I order Placement?

- **Preparation**
 - This is exactly the level of planning you perform today
- **Considerations**
 - Manufacturing time for placement supports published availability
 - SSR customizing service as alternative to CSP is billable for these systems
- **Order Planning and Preparation**
 - Review information available on the CSP website
<http://www.ibm.com/systems/power/support/csp/>
- **Submit your Order to IBM**
 - **Note: The order process now requires only a single submission for Business Partners in the US. A second submission via the CSP website is no longer required for US Business Partners.**

Ordering CSP – Detailed Ordering Instructions

The Big Picture

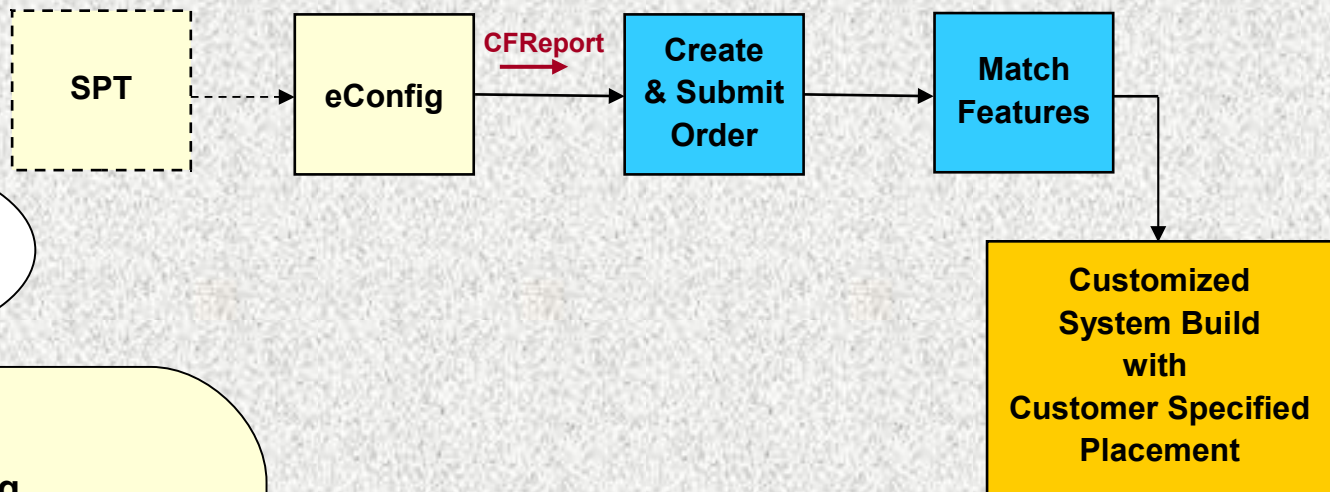




▶ <http://www.ibm.com/systems/power/support/csp/>

- Use the CSP Website as a starting point
- Please read and follow the directions discussed in this web site

Start Here to Place Order



LVT files can be uploaded into the SPT to be updated.

➤ Define placement

➤ The Sales/Marketing Configurator (eConfig) enables modification of adapter and disk placement and must be used to define enclosure in rack placement.

➤ The SPT provides detailed LPAR Planning assistance and should be used to establish your partitioning and placement definitions

➤ All placement definition is validated by eConfig

➤ Configure your system using eConfig. Indicate feature code “0456/8453” for CSP and “0469” for CSRP

➤ Placement and partition planning information can be imported from the SPT directly into eConfig, except for NewSys orders (SPT does not directly support custom placement for NewSys orders).

➤ Placement information can also be specified using the ‘drag and drop’ interface in eConfig.

Bridging from the SPT to eConfig

System: iSeries-570 (IBM eServer i5 9406/570) Report | H

Place Hardware

Specify how you want the hardware placed on your new system.

Display system/expansion unit: 9406_570-0-0 Model 9406-570 Work with system/expansion units

Hardware slots

Display hardware supported by: V5R3M0 Show expanded view Hide validation messages Additional features...

Action	Location	F/C	Partition	Order status	S/N	Description
<input checked="" type="checkbox"/>	P3-(D1:D3)	4326(3)	P1 - V5R3M0 [P1-T12]			35.16GB 15k RPM Disk Unit
<input checked="" type="checkbox"/>	P3-(D4:D6)	4326(3)	P1 - V5R3M0 [P1-T12]			35.16GB 15k RPM Disk Unit
<input checked="" type="checkbox"/>	P4-D1	5751	P1 - V5R3M0 [P1-T12]	IBM		IDE DVDROM
	P4-D2		Blocked by slot "D1"			IDE DVDROM AIX/Linux only
<input checked="" type="checkbox"/>	P1-C1	9844	P1 - V5R3M0	IBM		Base 64 MB IOP
<input checked="" type="checkbox"/>	P1-C2	9793	P1 - V5R3M0 [P1-C1]	IBM		Base 2-Line WAN w/Integrated Mode
<input checked="" type="checkbox"/>	P1-C9	5726	P1 - V5R3M0 [P1-C1]	IBM		RAID Enabler Card
	P1-T12	570B	P1 - V5R3M0 [P1-C1]			Embedded DASD Controller
	P1-T15	IDECD	P2 - AIX_HOSTED			Integrated IDE AIX/Linux controller
	P1-T14	570B	Not Assignable			Integrated AIX/Linux Disk Ctrl
	P1-T6	EETH	P1 - V5R3M0			Embedded 1 Gbps Ethernet (2 Ports)

Import Configuration Report

Create a base system for upgrade by choosing one of the following:

- Import local file
- Import from Retrieval
- Manual entry into BaseEdit (No configuration report)
- Previous unsaved import

Import a configuration report to restore one of the following:

- Initial Order
- Upgrade (Base and Proposed selections)

Edit before importing

OK Cancel

IBM System Planning Tool

System plan: New system plan

Export

Export the configuration of one or more systems for purchase.

Select	Name	Type	Status	Description
<input checked="" type="checkbox"/>	iSeries-570	IBM eServer i5 9406/570	Edit partitions ■ Valid Place hardware ■ Valid Define load source (Boot device) ■ Valid Define consoles ■ Valid	medium iSeries sample

Export Cancel

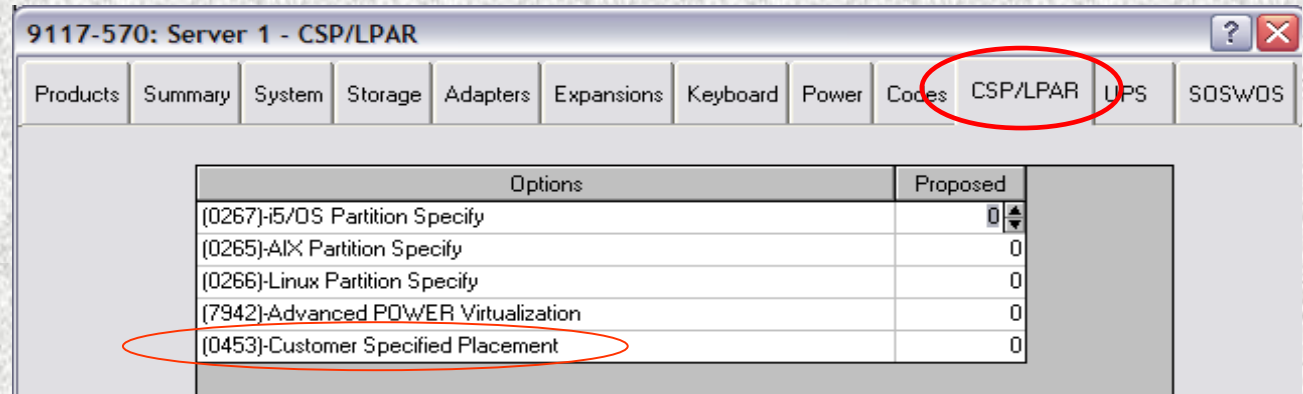
08/26/2011

Single Submit

Selecting CSP & CSR

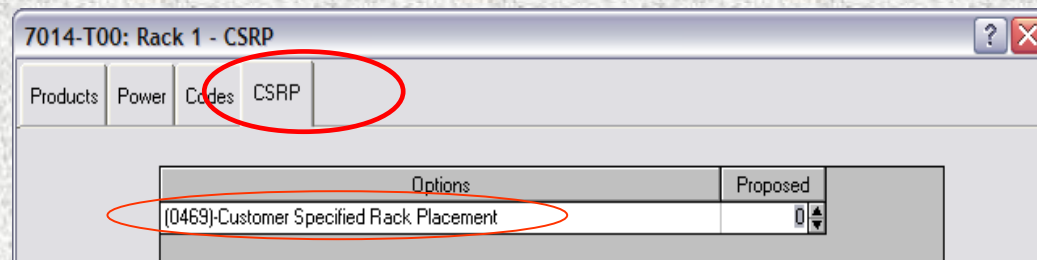
CSP/LPAR Tab in eConfig

Select, Define, and Order:
CSP – IBM i , AIX & Linux



CSR Tab in eConfig

Select, Define, and Order:
CSR – IBM i , AIX & Linux

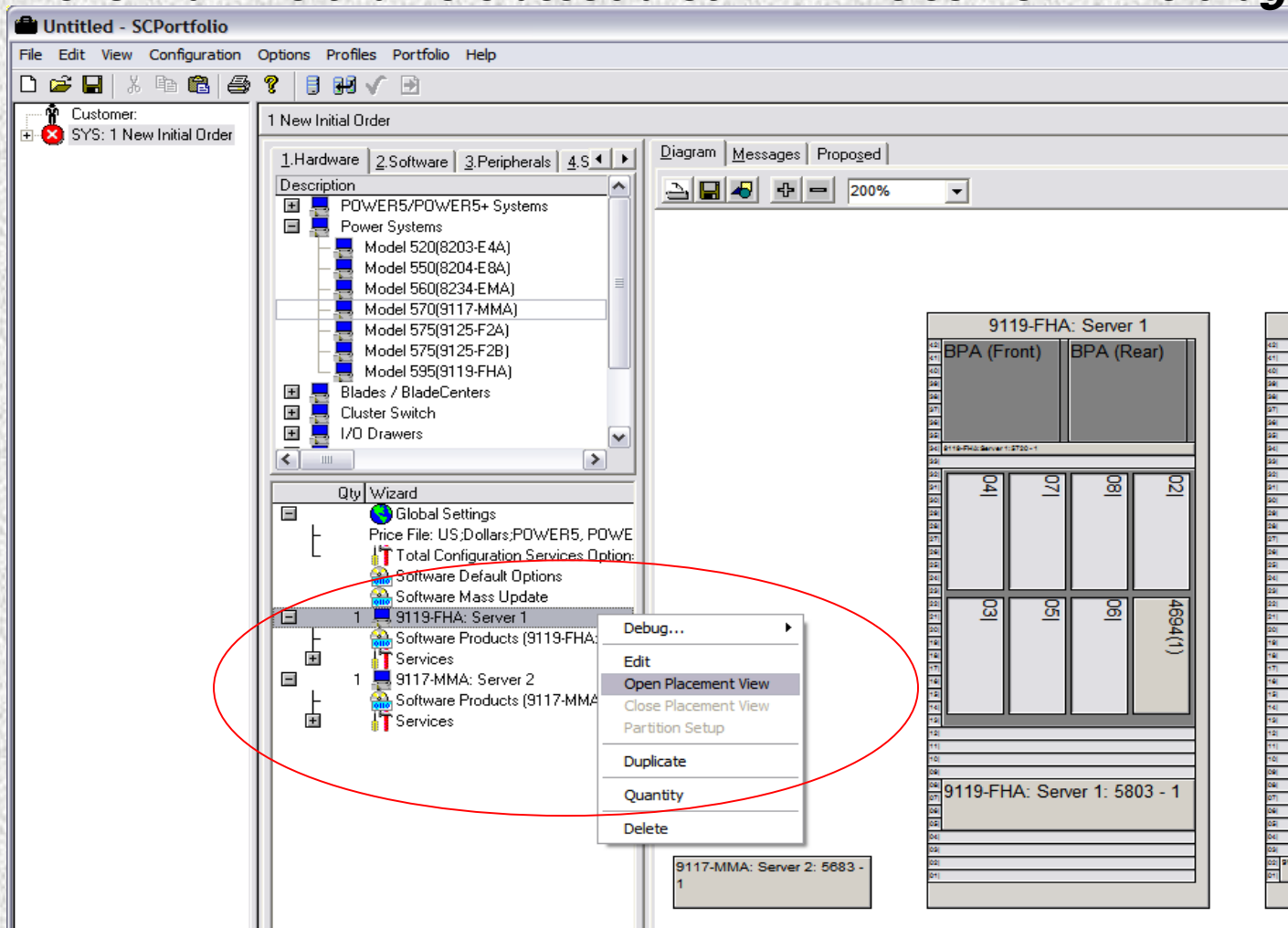


Methods for getting to the Placement View in eConfig

- *The custom-specified placement of DASD and Cards can be done on the diagram tab. The CSP interactivity on the diagram can be enabled in one of two ways:*
 - *(1) Right click on the appropriate wizard and select the menu item "Open Placement View" and then click on the diagram view. This will show all the drawers associated with the server in the diagram tab*
 - *(2) In the diagram tab, click on the appropriate drawer, I/O drawer or System drawer, and select "Open Placement View for selected enclosures". This opens a particular enclosure for CSP.*

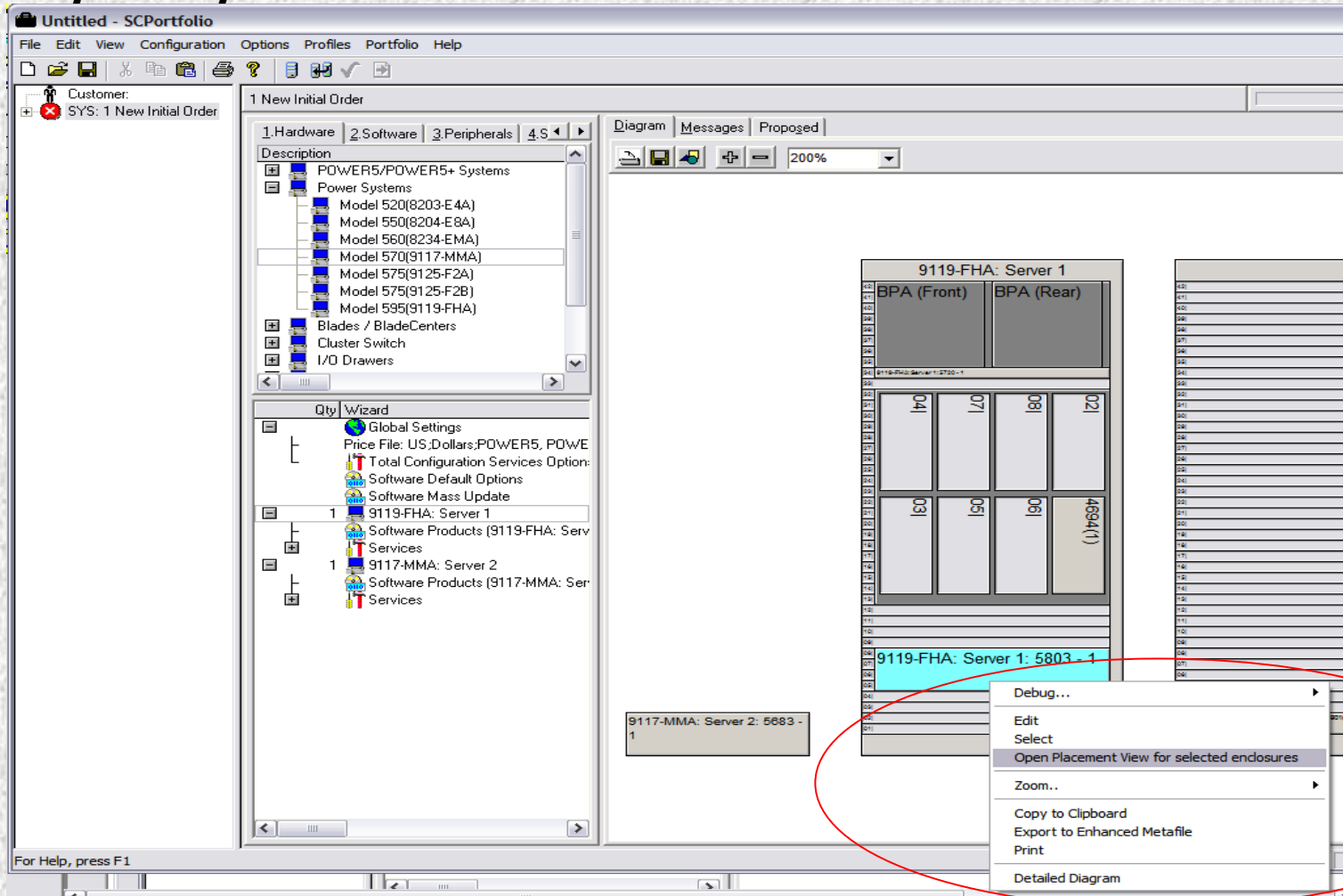
Method 1 to access eConfig Placement View

Right click on the appropriate wizard and select the menu item "Open Placement View" and then click on the diagram view.
This will show all the drawers associated with the server in the diagram tab



Method 2 to access eConfig Placement View

In the diagram tab, click on the appropriate I/O or System drawer and select "Open Placement View for selected enclosures". This opens a particular enclosure for CSP.



Adding Hardware to the Placement View

The screenshot displays a hardware configuration application. On the left, a tree view shows a list of hardware components under 'Additional Hardware'. The item '(2640)HDE Slimline DVD-ROM Drive' is circled in red. Below this is a 'Qty Wizard' pane showing a tree view of the configuration, including '9117-570: Server 1' and 'Services'. On the right, two server rack diagrams are shown. The top diagram, labeled '9117-570: Server 1: 7200_1', shows a rack with various components. The bottom diagram, labeled '9117-570: Server 1: 7200_2', shows a similar rack. In the bottom diagram, a yellow highlight is placed over a slot in the 'RAID SCSI Card Slot' section, with a red arrow pointing to it from a text box. The text box contains the following text:

The area in yellow depicts A “drag & drop” operation In progress.

Newsys Orders, System i only

- *SPT does not directly support custom placement in a NewSys order.*
- *There are two ways to facilitate custom placement for a NewSys order.*
- For both methods:
Import an existing CFReport for the upgrade and then select NewSys on Products page of the server wizard:

9406-570: Server 1 - Products

Products Summary System Storage Adapters Expansions Keyboard Power Codes CSP/LPAR UPS Serv

Product Information

Model: 9406-570

Name: Server 1

Configuration Type

Server/Value Package: (0937)-2.2GHz 2/16-Way (8100/58t)

Edition: (7760)-Capacity Backup Edition - Mc

Configure as NEWSYS

Operating System

Primary OS: i5/OS V5R3 (will be wd 01/04/2006)

Additional OS:

- AIX 5L V5.2
- AIX 5L V5.3
- Red Hat Linux AS 4

Preinstall Option: No Software Preinstall

Total Memory (GB): Select on System Tab

Processors	Proposed
(7258)-570 Full Enterprise Enable	0
(7260)-570 Enterprise Enablement	0
(7618)-570 One Processor Activation	6

Configuration Information:
Processor Activation Slot: 8 of 16 used

Feature Code: Search Results:

Interim Price < Previous Next > Configure Cancel

NewSys cont.

- On CSP/LPAR page, select CSP feature (0456, 8453, etc.).
- -There is a check box below the options stating:
Do you plan to submit a separate SPT originated CFReport to the CSP Web Repository.
- **Please read the information in the box directly below this check box option carefully as it contains information on two ways to facilitate custom placement for a NewSys order.**
 - See next page for complete text

9117-MMA: Server 1 (SN = SN1) - CSP/LPAR

Products Summary System Storage Adapters Expansions Keyboard Power Codes **CSP/LPAR** OS PCS UF

Validate placement by partition

Options	Proposed
(0265)-AIX Partition Specify	0
(0266)-Linux Partition Specify	0
(0267)-i5/OS Partition Specify	1
(7942)-PowerVM - Standard Edition	1
(7995)-PowerVM - Enterprise Edition	0
(8453)-Base Customer Spec Plcmnt	1

Do you plan to submit a separate, SPT originated CFReport to the CSP Web repository?

SPT does not directly support custom placement in a NewSys order. There are two ways to facilitate custom placement for a NewSys order.

Feature Code: Search Results:

Interim Price < Previous **Next >** Configure Cancel

Information included in eConfig text box about NewSys orders:

SPT does not directly support custom placement in a NewSys order. There are two ways to facilitate custom placement for a NewSys order.

If you have any questions about this process use the "Contact Us" link in the CSP Website.

1. Do not check the above check box and perform all the custom placement in this current configuration using custom placement view (drag and drop method) and submit the CFReport generated from this session for order processing . Submit the .cfr file to IBM via the csp website if using dual submit process, the custom placement information will automatically be sent with the order when using the single submit process. (Currently the single submit process is only available to US Business Partners and Distributors).

2. Check the above check box and use the CFReport from this current configuration for the standard ordering purposes, but do not submit this CFReport via the CSP website as it will not have the custom placement information.

Create a new (independent) CFReport by following these steps:

a) perform custom placement in SPT

b) export CFReport from SPT

c) restore the SPT CFReport in eConfig as an initial order and address any errors

d) ensure the hardware of the NewSys order matches the hardware from this current configuration

e) if using dual submit process, submit the eConfig generated CFReport via the CSP website -- but do not forward this CFReport for order processing .

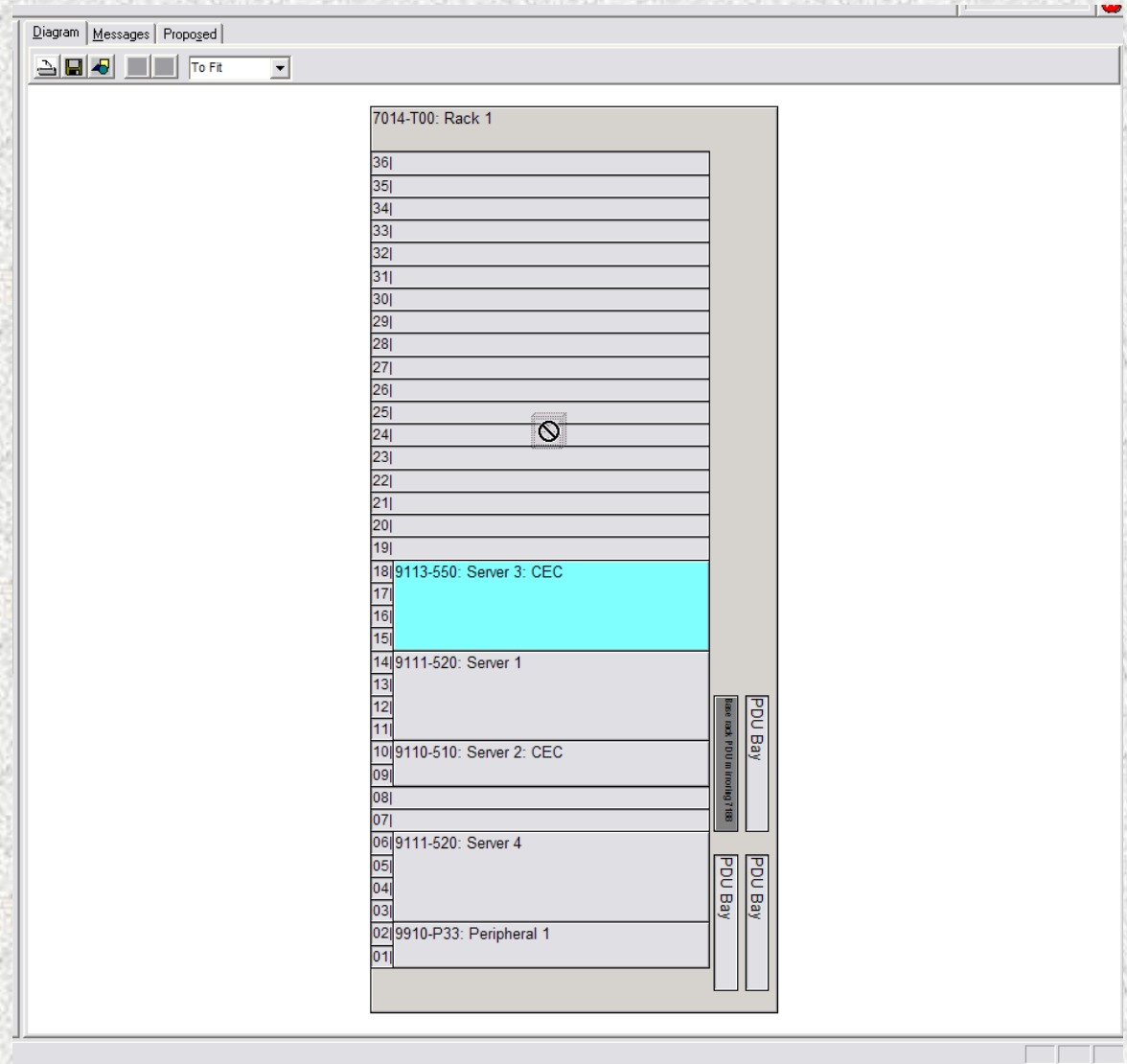
OR

f) if using single submit process, your will receive an email with instructions on submitting this CFReport.

Specifying Drawer in Rack Placement (CSRP)

Rack placement view

- Enables drag & drop placement of drawers in racks
- The highlighted drawer and cursor icon in the figure depicts a “drag & drop” operation in progress



IBM PRODUCTS SUPPORTED

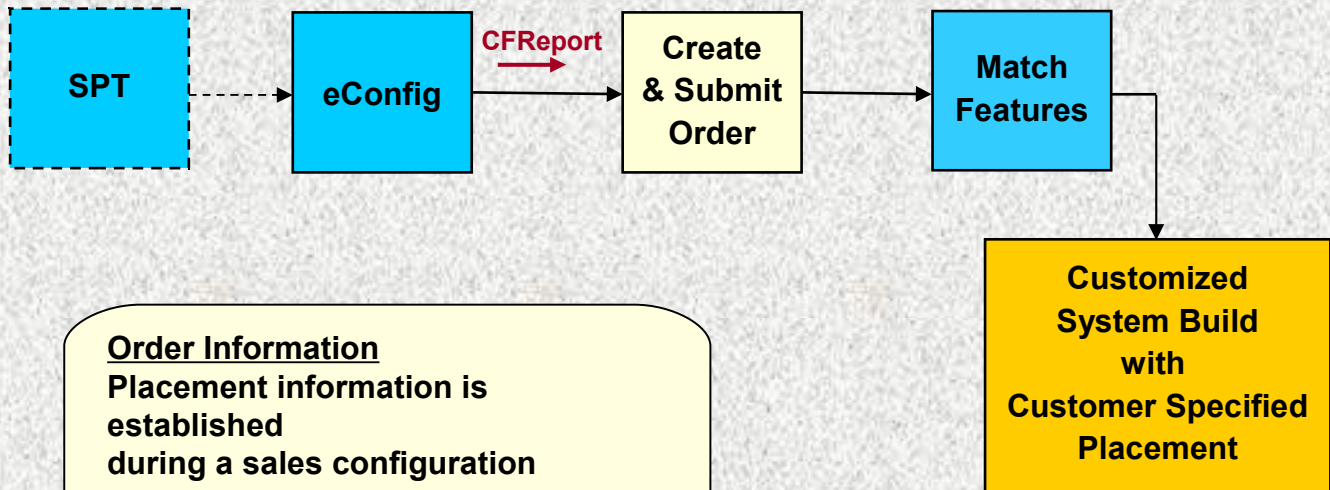
For the latest product offerings see - <http://www.ibm.com/systems/power/support/csp/>

Customer Specified Placement

CSP	MTM	Feature
Supported servers (IBM i, AIX and Linux all supported)	9119-FHA	8453
	9119-FHB	8453
	9125-F2A	8453
	9125-F2C	8453
	9179-MHB	8453
	9179-MHC	8453
	9117-MMB	8453
	9117-MMC	8453
	8236-E8C	0456
	8233-E8B	0456
	8205-E6B	0456
	8205-E6C	0456
	8202-E4B	0456
	8202-E4C	0456
	8231-E2B	0456
	8231-E2C	0456
	8231-E1C	0456

Customer Specified Rack Placement

CSRP	MTM	Feature
Supported racks and servers	7014-T42	0469
	7014-T00	0469
	7014-S25	0469
	9119-FHA	8469
	9119-FHB	8469



Order Information

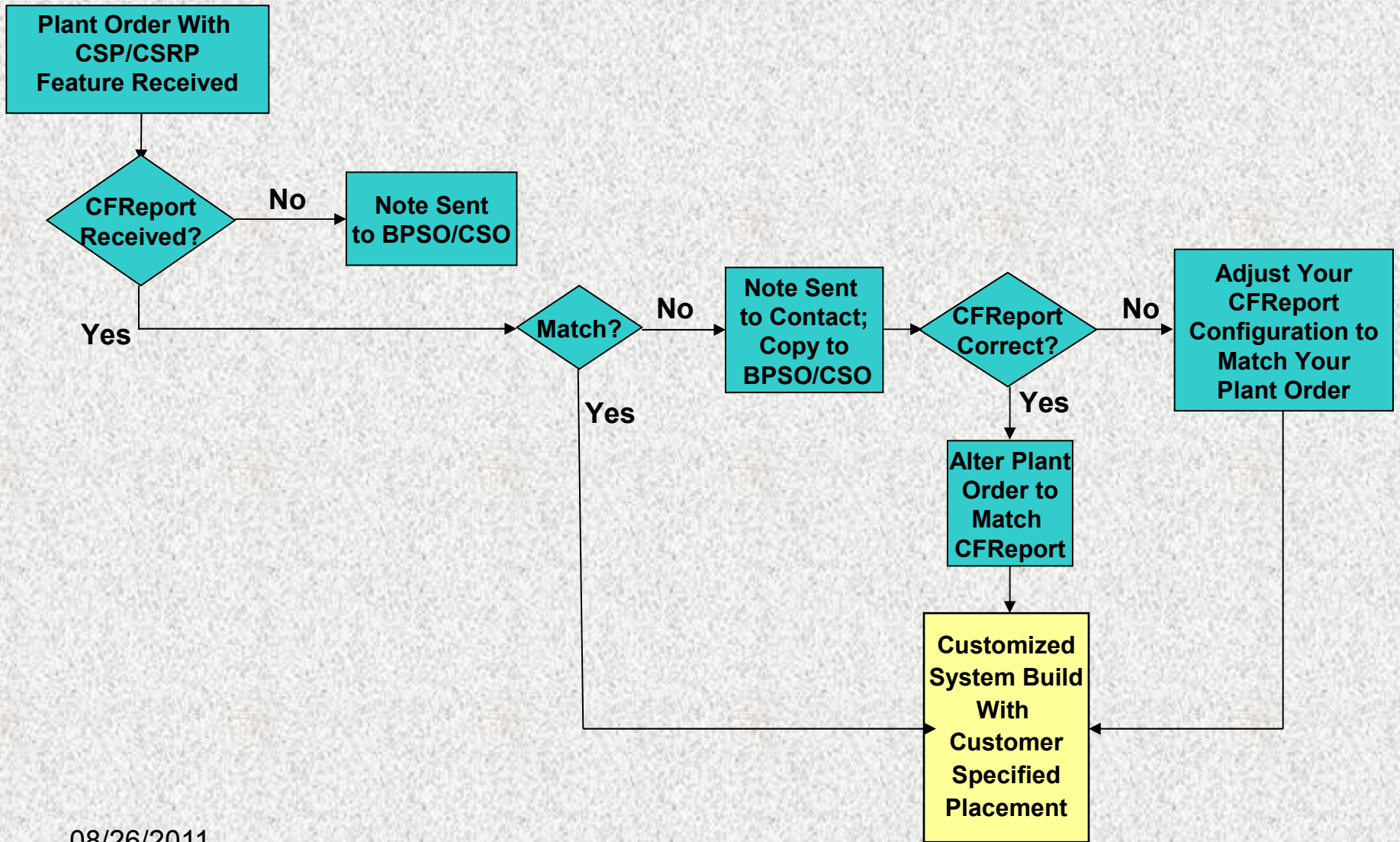
Placement information is established during a sales configuration session.

This information is included in the sales configuration output file (CFReport).



Create and submit your order through the IBM order process.

How Your CSP Order Is Validated



Communication –CFReport Missing

This note will be sent by IBM manufacturing to the IBM Business Partner Support Organization / IBM Customer Support Organization. They will contact the customer representative to request that the CFReport file be submitted.

Your order# (insert order #) and the related orders have been received and contains the Customer Specified Placement features 0456 & 0469. This requires an e-config generated CFReport file (_cfr).

This order is an Invalid order and has been rejected due to not submitting the .crf file as the process requests.

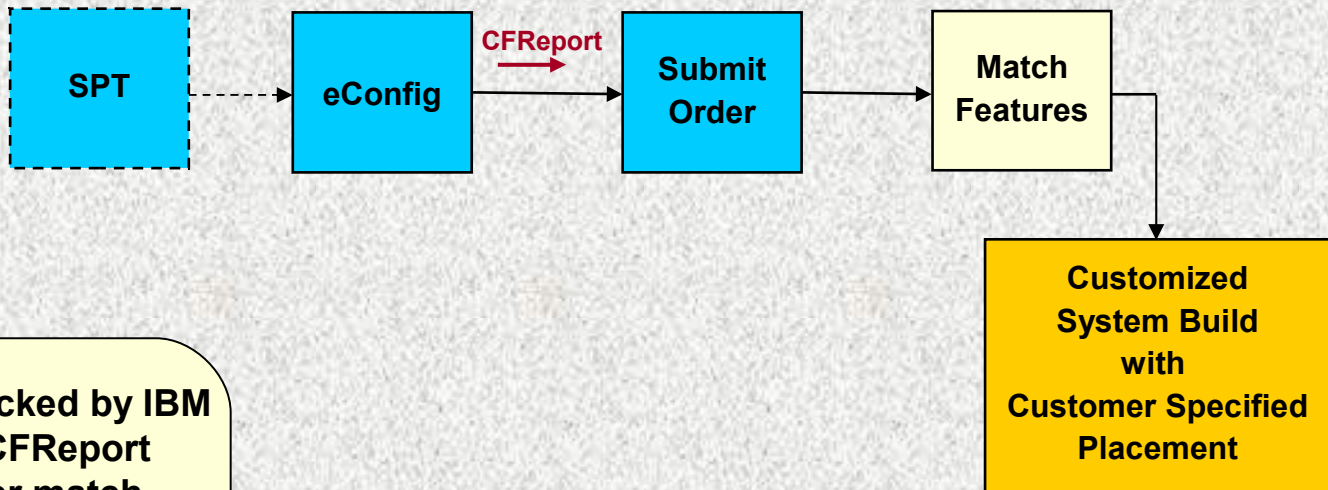
To correct you must immediately send the .CFR file to the URL listed. The .CFR file and the Order must match EXACTLY or order will be rejected again as invalid and placed on the bad order date for your resolution..

We required that the CFReport file be attached to "The Order Completion Form" that is found on the CSP website. The main page URL is: <http://www.ibm.com/systems/power/support/csp/> and the submission page is available at:
https://www-304.ibm.com/partnerworld/mem/forms/blankForms/csp_ordercompletion_form_home.jsp

The CSP website MUST be used to submit the .CFR file.

Please confirm that the file has been submitted by responding to this notice. Your order will be moved to the Bad Order Date until the .CFR file is received

**Please remember that the .CFR file and the Order must match EXACTLY!
Thank you.**



➤ Your order is checked by IBM to ensure that the CFReport output and the order match.

➤ Changes to either the order or to your plans after order submission require your coordination.

Changes to existing orders will likely change placement requirements. Mismatched placement and order information, alterations and late planning changes will likely cause your order to be delayed or require cancellation. Ensuring the placement specifications and the order stay synchronized will enable IBM to deliver a quality solution. Synchronization tips and techniques are discussed in the CSP and LPAR Planning Guide.

Communication – Mismatch of Order and CFReport information

This note is sent to the contact names on the Order Completion Form and a copy is sent to the **IBM Business Partner Support Organization / IBM Customer Support Organization**

Hello , your plant order and the CFReport file were received, however there is a mismatch between your CFReport file and your plant order as listed below.

Plant Order #	
MT/Model	
System #	

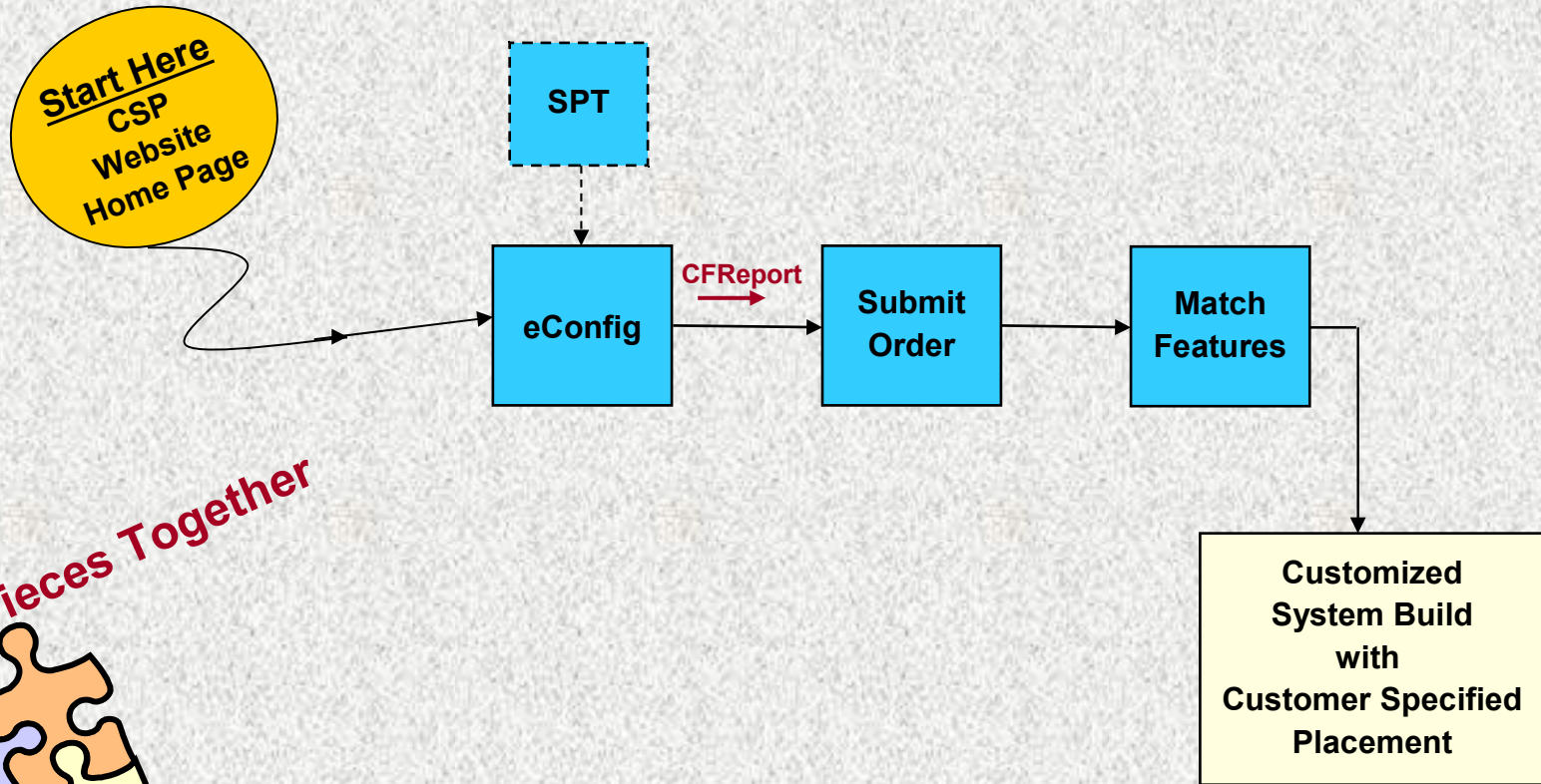
Feature or MT/Model	.cfr file qty	Plant Order Qty

If your CFReport file is correct, you will need to have BPSO/CSO alter your plant order to match the CFReport file. Please respond to the analyzer via email (reply with history) if the order is being altered.

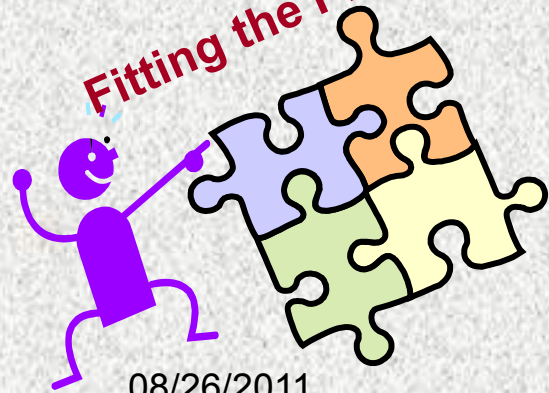
If the plant order is correct you will need to adjust your CFReport configuration to match your plant order. Please attach your new CFReport file and send to the analyzer via email (reply with history) so the CFReport database can be updated with the corrections.

Thank you.

Your Customized System Is Built !



Fitting the Pieces Together



08/26/2011

Single Submit

The CSP & LPAR Solution !



- **Lower Cost to Implement**
- **Saves Time**
- **Higher Quality**
- **Improved Customer Satisfaction**
- **Reduced Implementation Risk**

