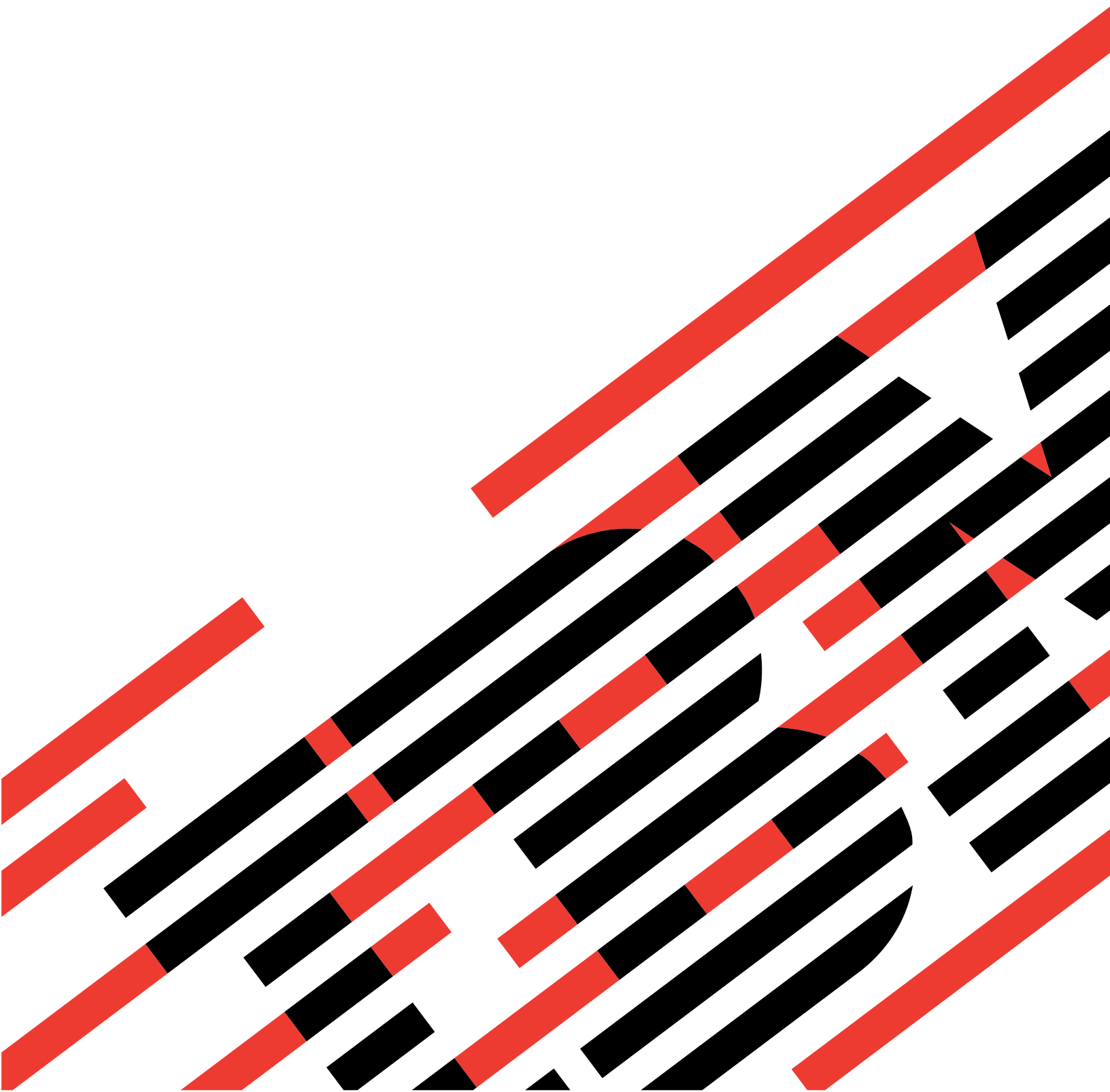


IBM

@server

iSeries Navigator





@server

iSeries Navigator

Contents

Chapter 1. What's new for iSeries Navigator in V5R2	1
Chapter 2. Print this topic	3
Chapter 3. Getting to know iSeries Navigator	5
Requirements for installing iSeries Navigator	6
Installing iSeries Navigator	7
Chapter 4. Related information for iSeries Navigator	9

Chapter 1. What's new for iSeries Navigator in V5R2

New information in the V5R2 Information Center for iSeries Navigator includes:

- **What can I do with iSeries Navigator?**

A summary of the capabilities that iSeries Navigator provides. To see step-by-step instructions for all these tasks, go to the iSeries Navigator online help (click **Help -> Help Topics -> What can I do with...?** in the iSeries Navigator main window).

- **Requirements for installing iSeries Navigator**

Updated PC hardware and software requirements.

See the following for more information on what new functions are available in V5R2 for iSeries Navigator:

- iSeries and AS/400^(R) Technical Support



web site

For an overview of the new functions for OS/400 V5R2, look under Publications in the left navigation bar, and then under Technical Overviews.

- iSeries Navigator



home page

Find out which iSeries Navigator functions are available for each release.

- **iSeries Navigator online help**

In iSeries Navigator, click **Help -> Help Topics -> What's new?** to review all the new functions available in iSeries Navigator this release.

See also the following topics:

- iSeries Navigator for Wireless—What's new for V5R2
- Application Administration—What's new for V5R2
- What's new in Management Central for V5R2?
- iSeries Navigator plug-ins—What's new for V5R2

How to see what's new or changed

To help you see where technical changes have been made, this information uses:

- The



image to mark where new or changed information begins.

- The



image to mark where new or changed information ends.

To find other information about what's new or changed this release, see the Memo to Users



Chapter 2. Print this topic

To view or download the PDF version of any iSeries Navigator topic in the Information Center, select from the following:

- Getting to know iSeries Navigator (about 90 KB or 20 pages)
Find an introduction to iSeries Navigator including installation instructions.
- iSeries Navigator for Wireless (about 450 KB or 40 pages)
Find out how to use iSeries Navigator for Wireless to interact with iSeries and Integrated xSeries Servers, to run commands, to interact with Management Central monitors, to work with tasks and systems, and to control user access.
- Application Administration (about 180 KB or 40 pages)
Find out how to control which functions or applications are available to users and groups on a specific server.
- Management Central (about 250 KB or 55 pages)
Management Central makes managing multiple servers as easy as managing a single server. Find out how to set up your Management Central network of endpoint systems and system groups. To read about more ways in which Management Central can help you streamline your server administration tasks, select from the following:
 - Performance (about 350 KB or 85 pages)
 - Software and licensed programs (about 280 KB or 75 pages)
- Developing iSeries Navigator plug-ins (about 360 KB or 125 pages)
Find out how to use plug-ins to add additional functions into iSeries Navigator. This PDF contains the following topics:
 - Plug-in support for iSeries Navigator
 - Installing and running the sample plug-ins
 - Plug-in developers' reference

Other information

You can also view or print any of the following Redbook PDFs:

- Managing AS/400 V4R4 with Operations Navigator



(about 500 pages)

- Management Central: A Smart Way to Manage AS/400 Systems



(about 240 pages)

Saving PDF files

To save a PDF on your workstation for viewing or printing:

1. Right-click the PDF in your browser (right-click the link above).
2. Click **Save Target As...**
3. Navigate to the directory in which you would like to save the PDF.
4. Click **Save**.

Downloading Adobe Acrobat Reader

If you need Adobe Acrobat Reader to view or print these PDFs, you can download a copy from the Adobe Web site (www.adobe.com/products/acrobat/readstep.html)



Chapter 3. Getting to know iSeries Navigator

iSeries Navigator is a powerful graphical interface for Windows clients. With iSeries Navigator, you can use your graphical interface skills to manage and administer your servers.

To learn more about iSeries Navigator, do the following:

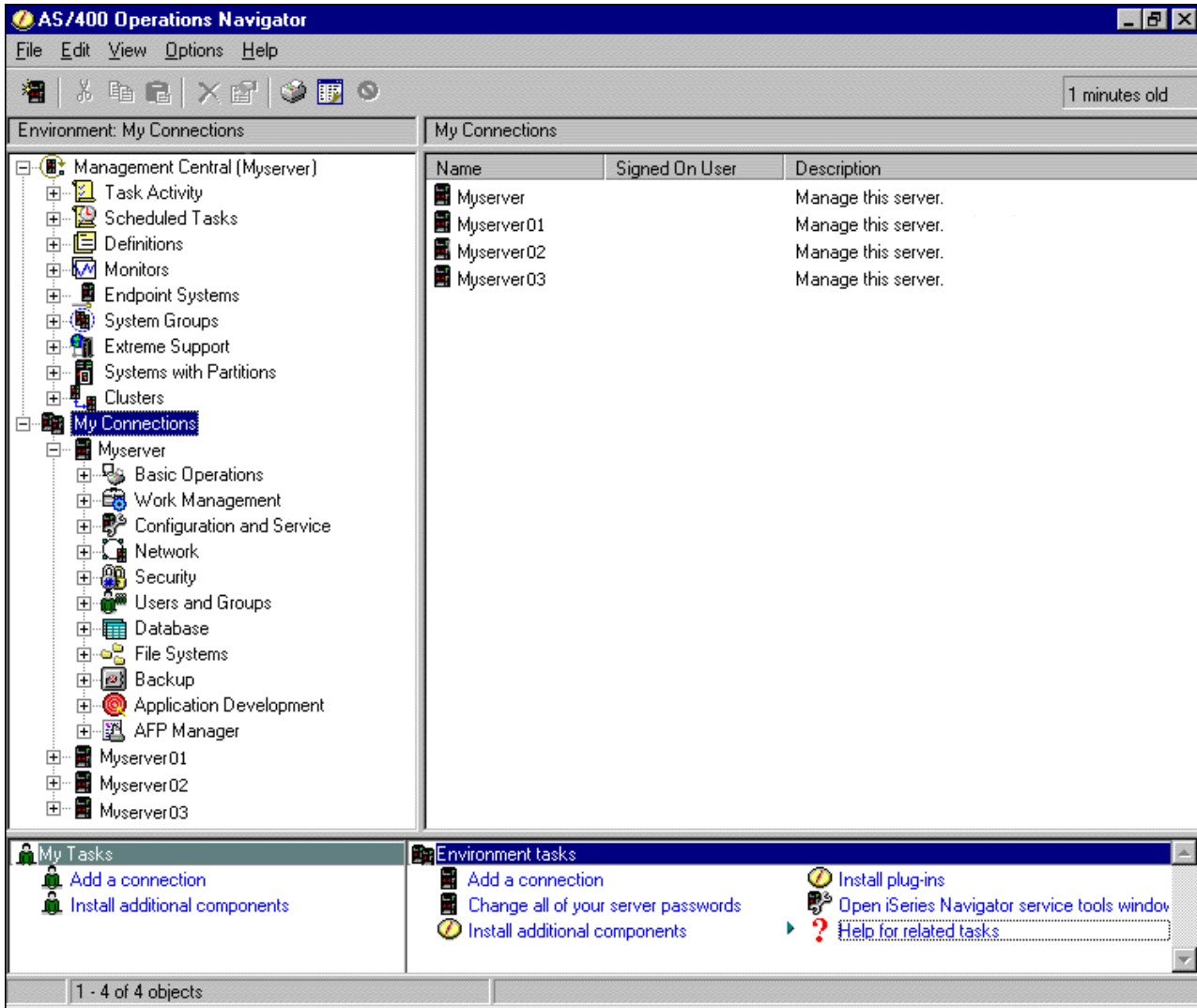
- **Visit the iSeries Navigator home page**



See what iSeries Navigator functions are available for each release.

- **Check out the requirements for iSeries Navigator**
Review the PC hardware and software requirements to install iSeries Navigator.
- **Install iSeries Navigator**
Get started managing and administering your server from your PC. Once installation is complete, task-based information is available in the iSeries Navigator online help.
- **Find out what you can do with iSeries Navigator**
See an overview of the capabilities that iSeries Navigator provides, which are covered in the Information Center.

Here is an example of the iSeries Navigator main window:



From this example, you can see the iSeries Navigator hierarchical tree view



in the left pane of the window



. It provides a familiar user interface for those experienced in using graphical interfaces. It also decreases the need for users to learn the character-based interface. iSeries Navigator functionality includes system navigation, configuration, and planning capabilities. For step-by-step instructions on how to perform tasks in iSeries Navigator, see the iSeries Navigator online help.

Requirements for installing iSeries Navigator

To install and use iSeries Navigator, your PC must be running one of the following Windows operating systems. The processor and memory requirements for each operating system are shown as well.



Microsoft Windows 98/Me/2000

Pentium 400 MHz minimum and at least 128 MB memory, 256 MB recommended

Microsoft Windows NT 4.0 with Microsoft Service Pack 5 or later

Pentium 400 MHz minimum and at least 128 MB memory, 256 MB recommended

Microsoft Windows XP

Pentium 400 MHz minimum and at least 256 MB memory



Installing iSeries Navigator

All iSeries Navigator components are packaged with iSeries Access for Windows. Assuming that your PC meets the “Requirements for installing iSeries Navigator” on page 6, your first step is to install the iSeries Navigator components when you install iSeries Access for Windows on your PC. You can install iSeries Access for Windows with or without using iSeries NetServer.

To install iSeries Navigator, follow these steps:

1. Install iSeries Access for Windows with or without iSeries NetServer.

The easiest way to install iSeries Access for Windows (and the iSeries Navigator components) on your PC is to use iSeries NetServer. iSeries NetServer is available with OS/400 Version 4 Release 2 and later releases.

With iSeries NetServer:

- a. Install iSeries NetServer on your PC.
- b. Follow the instructions in the Installing iSeries Access for Windows on Windows PCs with iSeries NetServer topic to complete the installation.

Without iSeries NetServer:

- a. On your PC, insert the *iSeries Setup and Operations CD* included with your order. You will not be able to install iSeries Navigator plug-ins, SSL, secondary languages, or add-ins with this install method.
- b. In order to install iSeries Navigator plug-ins and SSL, follow the instructions in the iSeries Access for Windows - Setup



to complete your iSeries Access for Windows installation.

2. Follow the instructions in the iSeries Access for Windows setup wizard to install iSeries Navigator.

You need to have iSeries Access for Windows installed on the system from which you **install** iSeries Navigator. However, iSeries Access for Windows is not required on the systems that you **connect to** with iSeries Navigator. The only software requirement for these systems is the OS/400 host servers option (Option 12 when you install the OS/400 operating system).

For first time users:

- a. Select the **Custom** installation option during iSeries Access for Windows installation.
- b. Select **iSeries Navigator** in the Component Selection window of the wizard. This selects all of the individual iSeries Navigator components.
- c. Deselect any subcomponent that you do not want installed.

For upgrades:

- a. If you are upgrading from a previous release of iSeries Navigator, choose the **Selective Upgrade** installation option to add additional components or to remove components that were previously installed.

3. Installation tips:

- If you select the **Typical** installation option, only the following components will be installed:
 - iSeries Navigator base support
 - Basic operations (messages, printer output, printers, and jobs)
- To install additional components after you install iSeries Navigator, use iSeries Access **Selective Setup**.
- If you are having trouble reading the fonts on some windows, try using a screen resolution of 1024x768 or higher.

Once you have completed installing iSeries Navigator, you will need to add server connections. To add connections to iSeries Navigator:

1. Double-click the **iSeries Navigator** icon on your Windows desktop.
2. Click **Yes** to create a connection.
3. Follow the instructions in the Add Connection wizard.
4. To add another server connection, click **File -> Connection to Servers -> Add Connection**

Once you have iSeries Navigator up and running, refer to the iSeries Navigator online help for specific task-based information.

Chapter 4. Related information for iSeries Navigator

Listed below are the IBM Redbooks^(TM) (in PDF format), Web sites, and Information Center topics that relate to the iSeries Navigator topic. You can view or print any of the PDFs.

Redbooks

- **Managing AS/400 V4R4 with Operations Navigator**



(about 500 pages)

iSeries Navigator (formerly known as Operations Navigator) brings a Windows-like graphical interface to configuring, monitoring, and managing the OS/400 environment. This book gives you insight into the wide range of AS/400 functions available through the AS/400 Operations Navigator graphical interface that comes packaged with AS/400 Client Access Express for Windows V4R4M0. It provides you with a moderate level overview of the AS/400 Operations Navigator's interface and functionality, correlates Operations Navigator functions with corresponding OS/400 command functions, and, in many cases, gives tips on how to use these functions. This publication is intended to help two sets of AS/400 users who have some level of management responsibilities for an AS/400 system: those familiar with the OS/400 command level interface to system facilities and those new to the OS/400, but who are familiar with Windows-like graphical interfaces to system facilities.

- **Management Central: A Smart Way to Manage AS/400 Systems**



(about 240 pages)

Discover the benefits of Management Central and more. Management Central is a key component of iSeries Navigator that provides system administrators with the ability to manage multiple servers that are interconnected across a TCP/IP network. It provides several constructs, which help to manage groups of servers and their associated resources. This redbook discusses the capabilities of each of the functions that are available in V4R4, and introduces you to the graphical user interface way of managing the servers in your network. Find out how easy it is to manage your network with the click of a mouse!

Web sites

- iSeries Navigator home page



Other Information Center topics

- iSeries Navigator for Wireless (about 450 KB or 40 pages)
- Application Administration (about 180 KB or 40 pages)
- Management Central (about 250 KB or 55 pages)
 - Performance (about 350 KB or 85 pages)
 - Software and licensed programs (about 280 KB or 75 pages)
- Developing iSeries Navigator plug-ins (about 360 KB or 125 pages)

To save a PDF on your workstation for viewing or printing:

1. Right-click the PDF in your browser (right-click the link above).
2. Click **Save Target As...**
3. Navigate to the directory in which you would like to save the PDF.

4. Click **Save**.

If you need Adobe Acrobat Reader to view or print these PDFs, you can download a copy from the Adobe Web site (www.adobe.com/products/acrobat/readstep.html)





Printed in U.S.A.