

Power Systems

*PCI Cable*

**IBM**



Power Systems

*PCI Cable*

**IBM**

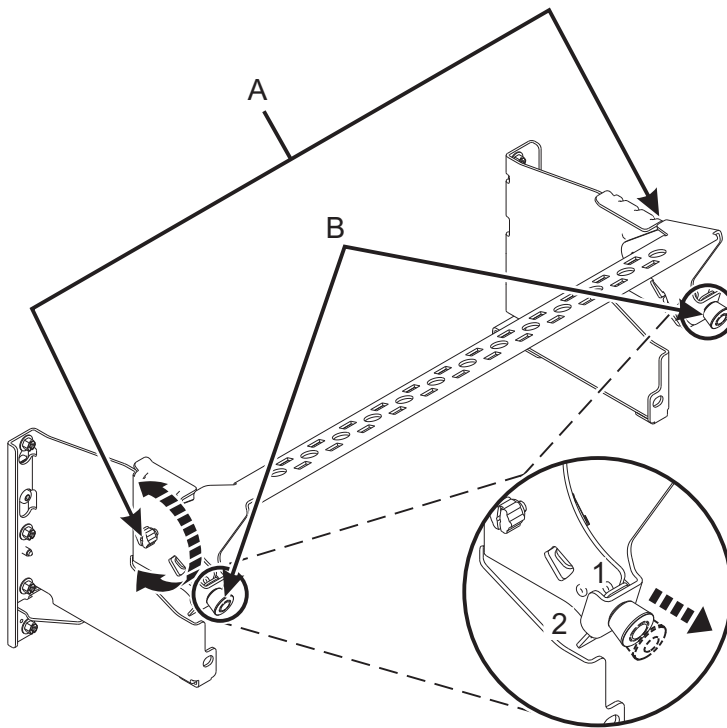


---

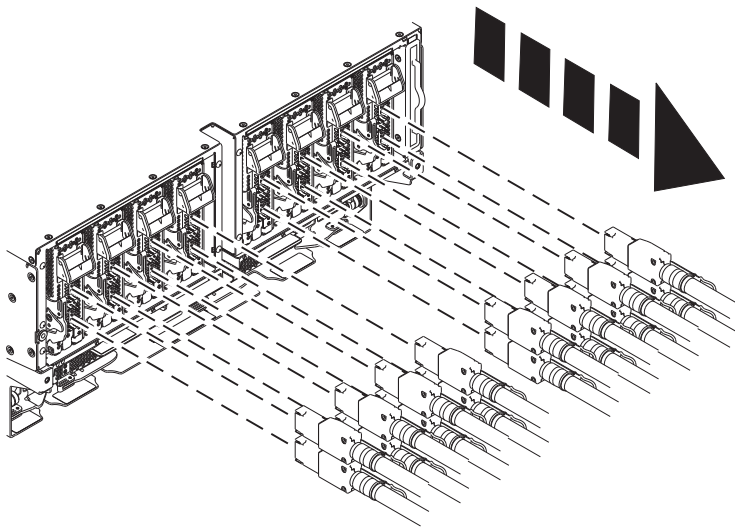
## Remove Expansion Drawer Cable

To remove an expansion drawer cable, complete the following steps:

1. Perform the following procedure on ONLY THE FRU(s) BEING SERVICED. The following images are generic and do not represent the literal location being serviced.
  2. Modifying FRU locations which are not called out for service can have adverse effects on the system, INCLUDING SYSTEM OUTAGE AND LOSS OF DATA.
1. Put the cable management bracket in the service position.
    - a. Turn the thumbscrews (A) counter-clockwise to loosen the cable management bracket.
    - b. Pull out the quarter-turn fasteners (B) and turn them to disengage them while you lift the cable management bracket to its raised position.
    - c. Turn the quarter-turn fasteners to engage and lock the bracket into position.



2. Label and unplug the expansion drawer cable **being serviced** from the system node. Undo the hook-and-loop fastener to remove the cables from the cable management bracket and loosen the hook-and-loop fastener securing the cable to the rack.



3. Label and unplug the expansion drawer cable from the device to which it is connected.

If performing this procedure from a management console, close this web page to continue with the procedure.

---

## Install Expansion Drawer Cable

To install an expansion drawer cable, complete the following steps:

1. Perform the following procedure on ONLY THE FRU(s) BEING SERVICED. The following images are generic and do not represent the literal location being serviced.
2. Modifying FRU locations which are not called out for service can have adverse effects on the system, INCLUDING SYSTEM OUTAGE AND LOSS OF DATA.

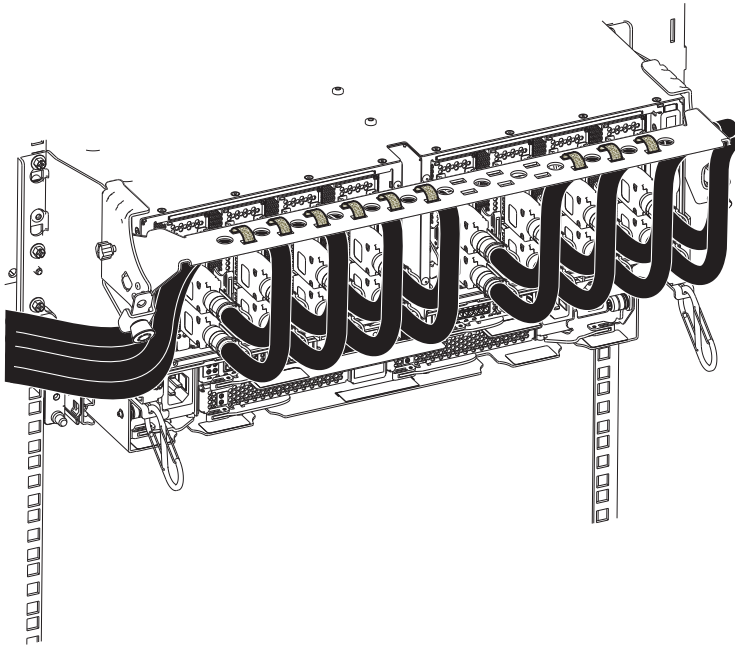
1. Route the CXP, expansion drawer cables, and input/output (I/O) cables to the cable management bracket.
  - a. Label all of the CXP, expansion drawer cables, and I/O cables before installation.
  - b. For each CXP, expansion drawer, and I/O cable, remove the protective cover from the backshell before plugging it into the system.

**Note:** Never set the cable or cable end down without the protective cover. If the cable must be unplugged for any reason, reattach the protective cover until it is ready to be replugged.

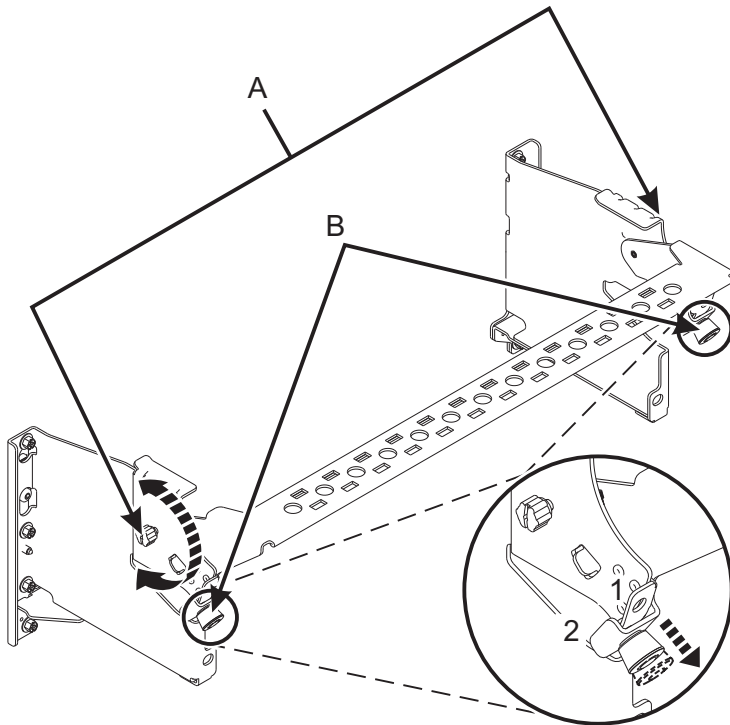
- c. Inspect all of the CXP and expansion drawer cable backshells. If no damage is found, plug the cables into the system.
- d. Plug the I/O cables into the system by pushing firmly until the latch is secure.
- e. Ensure that the I/O cable is not interwoven or threaded between the bulk wire of another cable.
- f. Using hook-and-loop fasteners, route the bulk wire and cable fiber to the cable management bracket.

**Note:** (a) The I/O cables must be directly behind the installed PCIe adapter when routed through the cable management bracket. (b) Any cable that is attached to the left or rightmost card slots can be routed directly to the side of the rack instead of the cable management bracket.

- g. Route the remaining bulk wire along the cable management bracket to the side of the rack by using hook-and-loop fasteners.
- h. Secure the bulk wire to the side of the rack by using additional hook-and-loop fasteners.
- i. After routing and securing all of the CXP, expansion drawer, and I/O cables, proceed to the next step.

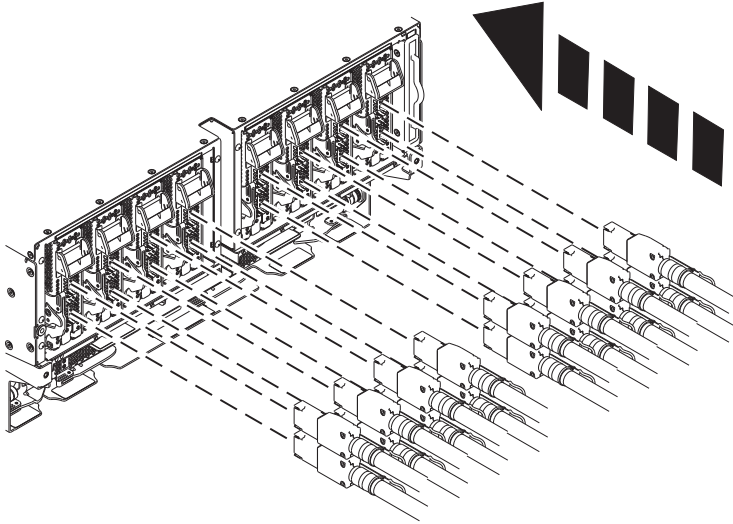


2. Put the cable management bracket in the operating position.
  - a. Pull the quarter-turn fasteners (**B**) out and turn them to disengage them while moving the cable management bracket to its lower position.
  - b. Turn the quarter-turn fasteners to engage and lock the bracket into position.
  - c. Turn the thumbscrews (**A**) clockwise to stabilize the cable management bracket.





3. Plug the expansion drawer cable **being serviced** into the system node. Secure the cable to the side of the rack using a hook-and-loop fastener after plugging it in.



4. Plug the expansion drawer cable into the device to which it should be connected. Pull gently on the cable backshell to make sure it is securely plugged in.

**Note:** Do not pull on the bulk wire.

If performing this procedure from a management console, close this web page to continue with the procedure.

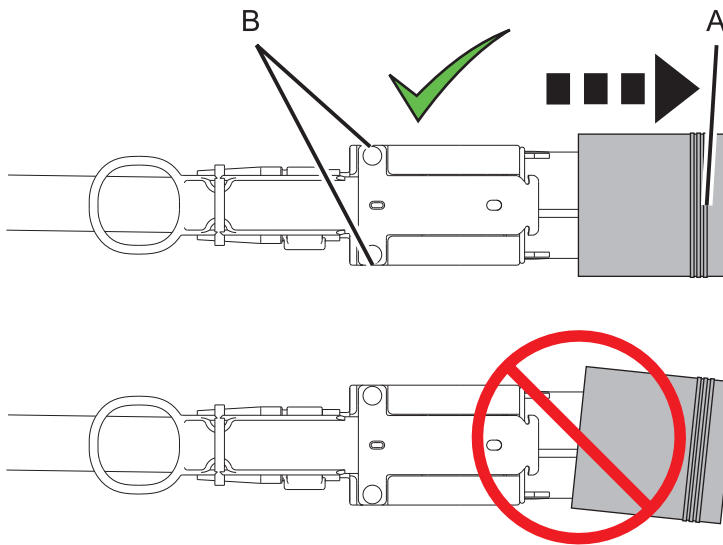


---

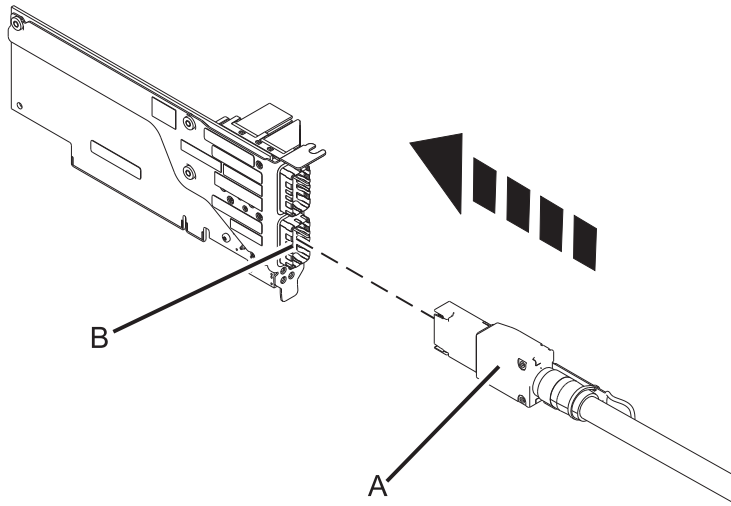
## Install PCIe Expansion Drawer Cable Pair

To install a PCIe connection expansion drawer cable pair, complete the following steps:

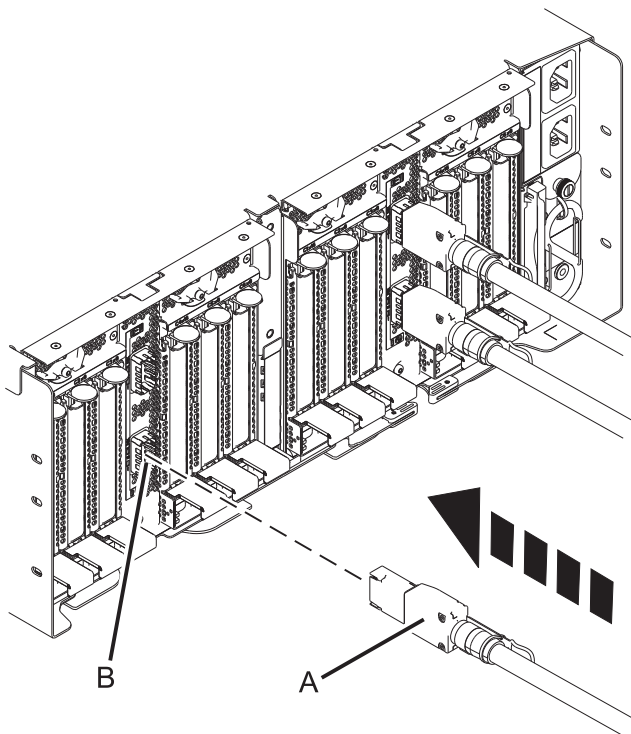
1. Perform the following procedure on **ONLY THE PCIe EXPANSION DRAWER CABLE PAIR BEING ADDED**. The following images are generic and do not represent the literal location being serviced.
2. Modifying FRU locations which are not called out for service can have adverse effects on the system, **INCLUDING SYSTEM OUTAGE AND LOSS OF DATA**.
3. To avoid damage to the connectors on the expansion drawer cables, do not remove the protective covers until just before you need to plug the cable to the host system or PCIe3 expansion drawer.
4. Ensure that the lengths of the expansion drawer cables are the required length and that both cables are the same length.
  1. Ensure that you have the electrostatic discharge (ESD) wrist strap attached. If not, attach it now.
  2. Note that PCIe connections must have cable pairs (two cables) connected from the PCIe3 cable adapter to the I/O module in the PCIe3 expansion drawer being serviced.
  3. Connect the first expansion drawer cable
    - a. To remove the protective cover on one of the connector ends of the expansion drawer cable, hold the cable housing (**B**) on the short edges while grasping the cover on the long edge (**A**). Pull the protective cover off.



- b. Connect the expansion drawer cable (**A**) to the bottom port (**B**) on the PCIe3 cable adapter in the host system as shown.

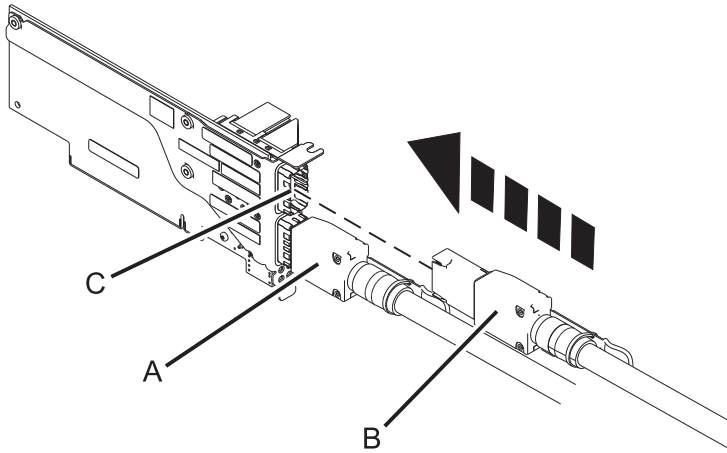


- c. Remove the protective cover from the opposite end of the expansion drawer cable that you will plug into the I/O module in the PCIe3 expansion drawer.
- d. Connect the expansion drawer cable (A) to the bottom port (B) on the I/O module being serviced inside the PCIe3 expansion drawer.

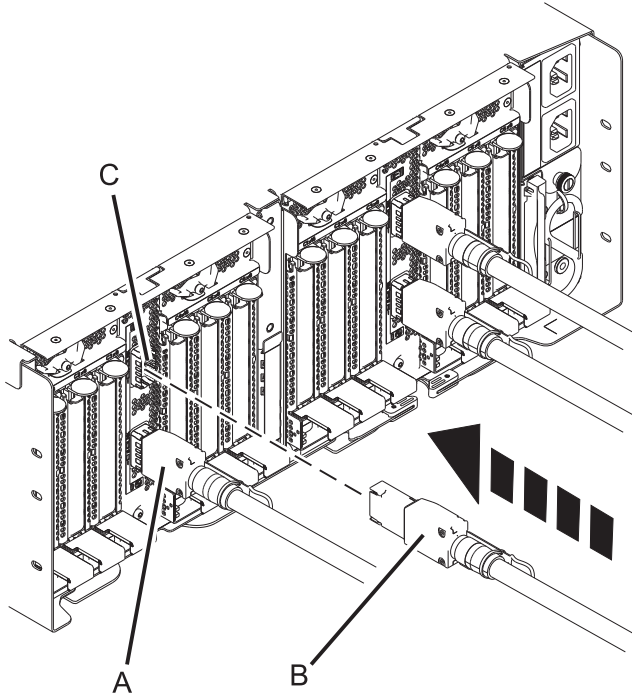


- 4. Connect the second expansion drawer cable
  - a. Remove the protective cover from one end of the second expansion drawer cable.

- b. Ensure that there is already an expansion drawer cable (A) connected to the bottom port on the PCIe3 cable adapter. Connect the second expansion drawer cable (B) to the top port (C) on the PCIe3 cable adapter in the host system.



- c. Remove the protective cover from the opposite end of the second expansion drawer cable that you will plug into the I/O module in the PCIe3 expansion drawer.
- d. Ensure that there is already an expansion drawer cable (A) connected to the bottom port on the I/O module being serviced. Connect the second expansion drawer cable (B) to the top port (C) on the I/O module being serviced inside the PCIe3 expansion drawer.



If performing this procedure from a management console, close this web page to continue with the procedure.





Printed in USA