

Recyclability assessment *

Date: December 3, 2019

IBM Power Server 8286 42A Rack drawer

Brand name =	IBM				
Model name =	8286 42A		Product weight =	44.06 kg	
Part/Sub-Assembly	Mass (g)	Qty	Mass/System	Recyclability rate**	Recyclable mass (g)
Frame Assembly	8890	1	8890	97%	8623
Service cover assembly	3160	1	3160	97%	3065
CDIMM (dual in-line memory module)	180	16	2880	97%	2794
Planar Assembly	6360	1	6360	100%	6360
Heatsink Assembly	680	2	1360	93%	1265
Power Supply Assembly	1070	4	4280	97%	4152
Direct access storage device (DASD) Backplane	1360	1	1360	100%	1360
Solid State Drive 1.8"	90	8	720	82%	590
DASD 2.5"	360	20	7200	92%	6624
SAS Redundant Array of Independent Disks (RAID) Card	550	2	1100	100%	1100
Peripheral Component Interconnect (PCI) card	360	4	1440	100%	1440
PCI card	730	4	2920	100%	2920
Ethernet Card	140	1	140	100%	140
USB Card	140	1	140	100%	140
Fan Assembly	500	4	2000	90%	1800
DVD Drive Assembly	110	1	110	97%	107
Sum ***			44060 g		42480 g

Recyclability rate: $R_{rcy} = \frac{\sum(m_{(i)} \times RCR_{(i)})}{m_{EEE}} \times 100\% = 96\%$

Symbols and definitions

$m_{(i)}$ = Mass of i^{th} part

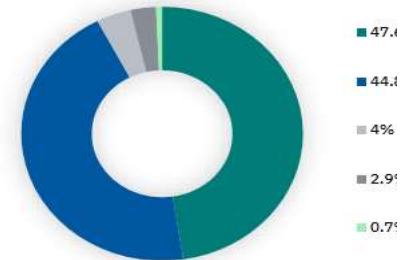
$RCR_{(i)}$ = Recycling rate of the i^{th} part in the corresponding end-of-life treatment scenario

R_{rcy} = Recyclability rate

m_{EEE} = Total product mass

* This recyclability assessment is based on the format in the International Electrotechnical Commission (IEC) 62635 Standard Guidelines for end-of-life information provided by manufacturers and recyclers and for recyclability rate calculation of electrical and electronic equipment. Recyclability is defined by the standard to be "ability of waste product to be recycled, based on actual practices." The recyclability rate calculation equation is defined by this standard. Products were assessed based on the results of reuse, recycling, and/or disposal at IBM's Product End-of-Life Management suppliers. The 2018 results for IBM product end-of-life management are attached to the right. The IBM and the Environment 2018 Annual report is located at <https://www.ibm.com/ibm/environment/annual/reporting.shtml>

Product end-of-life processing materials



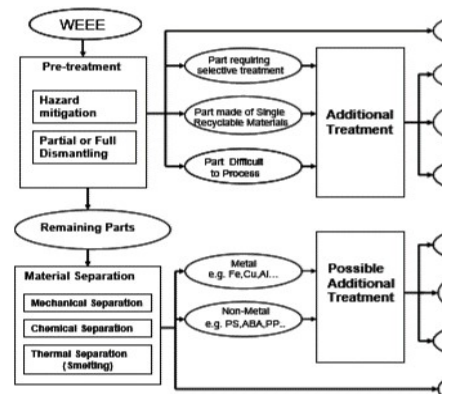
** Assumptions - Recyclability rates projected for this product and parts are based on knowledge of the product material composition, publicly available reference sources for recyclability of materials (see references below) and on the overall results of IBM's product end-of-life management vendors. Where there is a publicly available recyclability rate for a commodity or assembly, such as those in the JRC Technical Report below, that rate is used. Where there is not a publicly available recyclability rate, the overall rate of 97% was chosen because that is the documented and actual recycling rates from IBM Product End of Life Management vendors. The 97% is the actual recyclability of IBM products as reported from IBM PELM vendors and the available infrastructure. According to NSF/ANSI 426-2018 - Printed circuit board substrate material, included in printed circuit boards that will be sent to a smelter for metals recycling, shall be considered recyclable for the purpose of the calculation.

*** This POWER server is unique in content based on customer ordering. The weight will vary based on content of the server. The bill of material provided here is an example for this product and that which is used for the Installation Planning manual.

**** References: IEC/TR 62635, "Technical Report IEC/TR 62635. Guidelines for End of Life information provision from manufacturers and recyclers, and for recyclability rate calculation of Electrical and Electronic Equipment." The International Electrotechnical Commission (IEC), 2012
 P. Chancerel and M. Marwede, JRC Technical Reports, Feasibility study for setting-up reference values to support the calculation of recyclability / recoverability rates of elect(ron)ic products August 2016 and NSF/ANSI 426 - 2018 Environmental Leadership and Corporate Social Responsibility Assessment of Servers

End of life treatment methodology - The methodology for recycling technologies and practices for this product generally follow the end-of-life treatment process as outlined by IEC/TR62635. See the process flow diagram to the right. Disassembly of the product is required to sort into recycling streams based on the infrastructure available to the dismantler. Generally circuit cards, backplanes, processors, etc. would go to a precious metal recycler. Metal covers, chassis, brackets, screws, etc to a metal smelter. Plastic parts such as the bezel, covers, etc. would go to a plastic recycler.

The information here is based on IBM's knowledge as of the date of this document, which may be based on its records and information from third parties. This documentation applies to finished products that IBM newly puts on the market. Limitations for Customers: The Product information provided here is provided "AS IS", without any express or implied warranty of any kind. This information is subject to change without notice; provided, however, that IBM reserves the right, in its discretion, to issue an update or modification to this Documentation if it believes it is appropriate to do so. The contents of this Documentation do not constitute either: (1) legal advice; (2) a legal opinion; or (3) any representation, warranty, or guarantee regarding a person's ability to comply with applicable legal requirements. This Documentation in no way modifies any agreements entered into by IBM.



End-of-life treatment processes from IEC/TR 62635

ethods

6% Recycled

8% Resold

Reused

% Waste-to-Energy

% Landfill or Incineration

