

# **WALKTHROUGH for Director:**

## **Filters**

**Draft 1.01**

**By Colin Crook**

# Notices

This information was developed for products and services offered in the U.S.A. IBM may not offer the products, services, or features discussed in this document in other countries. Consult your local IBM representative for information about the products and services currently available in your area. Any reference to an IBM product, program, or service is not intended to state or imply that only that IBM product, program, or service may be used. Any functionally equivalent product, program, or service that does not infringe any IBM intellectual property right may be used instead. However, it is the user's responsibility to evaluate and verify the operation of any non-IBM product, program, or service. IBM may have patents or pending patent applications covering subject matter described in this document. The furnishing of this document does not give you any license to these patents. You can send license inquiries, in writing, to:  
*IBM Director of Licensing, IBM Corporation, North Castle Drive, Armonk, NY 10504-1785 U.S.A.*

**The following paragraph does not apply to the United Kingdom or any other country where such provisions are inconsistent with local law:** INTERNATIONAL BUSINESS MACHINES CORPORATION PROVIDES THIS PUBLICATION "AS IS" WITHOUT WARRANTY OF ANY KIND, EITHER EXPRESS OR IMPLIED, INCLUDING, BUT NOT LIMITED TO, THE IMPLIED WARRANTIES OF NON-INFRINGEMENT, MERCHANTABILITY OR FITNESS FOR A PARTICULAR PURPOSE. Some states do not allow disclaimer of express or implied warranties in certain transactions, therefore, this statement may not apply to you.

This information could include technical inaccuracies or typographical errors. Changes are periodically made to the information herein; these changes will be incorporated in new editions of the publication. IBM may make improvements and/or changes in the product(s) and/or the program(s) described in this publication at any time without notice.

Any references in this information to non-IBM Web sites are provided for convenience only and do not in any manner serve as an endorsement of those Web sites. The materials at those Web sites are not part of the materials for this IBM product and use of those Web sites is at your own risk. IBM may use or distribute any of the information you supply in any way it believes appropriate without incurring any obligation to you.

Information concerning non-IBM products was obtained from the suppliers of those products, their published announcements or other publicly available sources. IBM has not tested those products and cannot confirm the accuracy of performance, compatibility or any other claims related to non-IBM products. Questions on the capabilities of non-IBM products should be addressed to the suppliers of those products.

This information contains examples of data and reports used in daily business operations. To illustrate them as completely as possible, the examples include the names of individuals, companies, brands, and products.

All of these names are fictitious and any similarity to the names and addresses used by an actual business enterprise is entirely coincidental.

## COPYRIGHT LICENSE:

This information contains sample application programs in source language, which illustrate programming techniques on various operating platforms. You may copy, modify, and distribute these sample programs in any form without payment to IBM, for the purposes of developing, using, marketing or distributing application programs conforming to the application programming interface for the operating platform for which the sample programs are written. These examples have not been thoroughly tested under all conditions. IBM, therefore, cannot guarantee or imply reliability, serviceability, or function of these programs..

# User and User Roles

## Environment

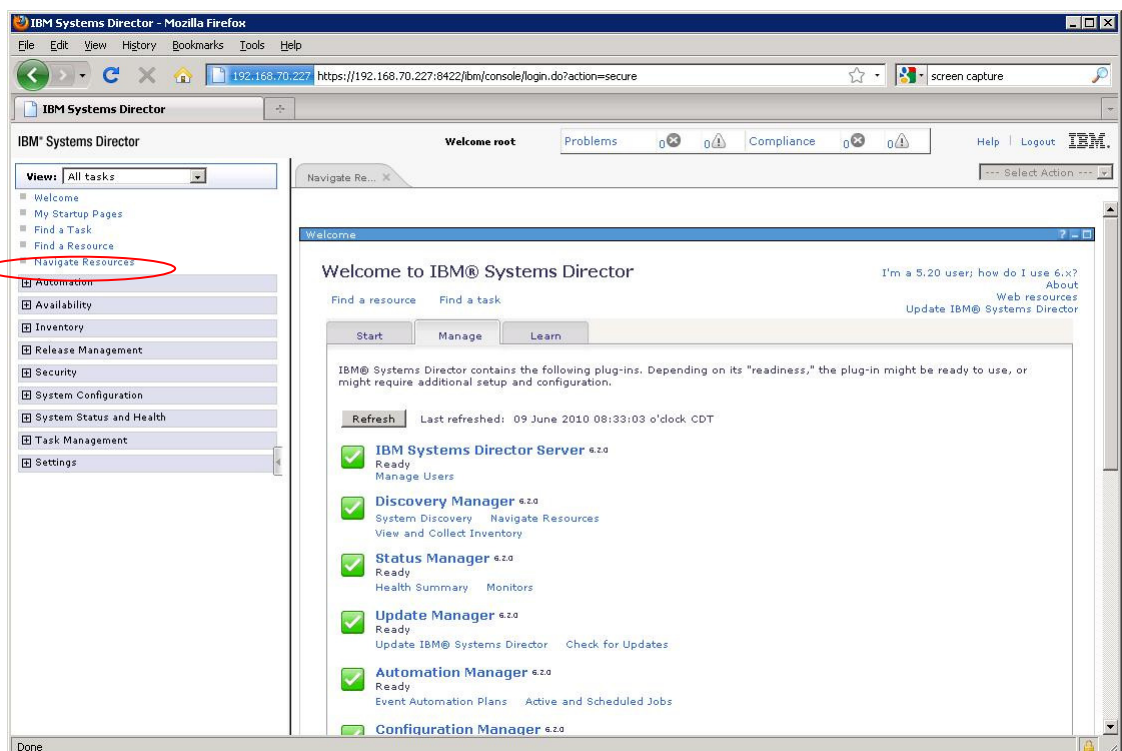
JS22 running AIX 6.1 and Director Server 6.2  
JS21 & JS20 running AIX 6.1  
Discovery and Inventory have been completed.

## Purpose

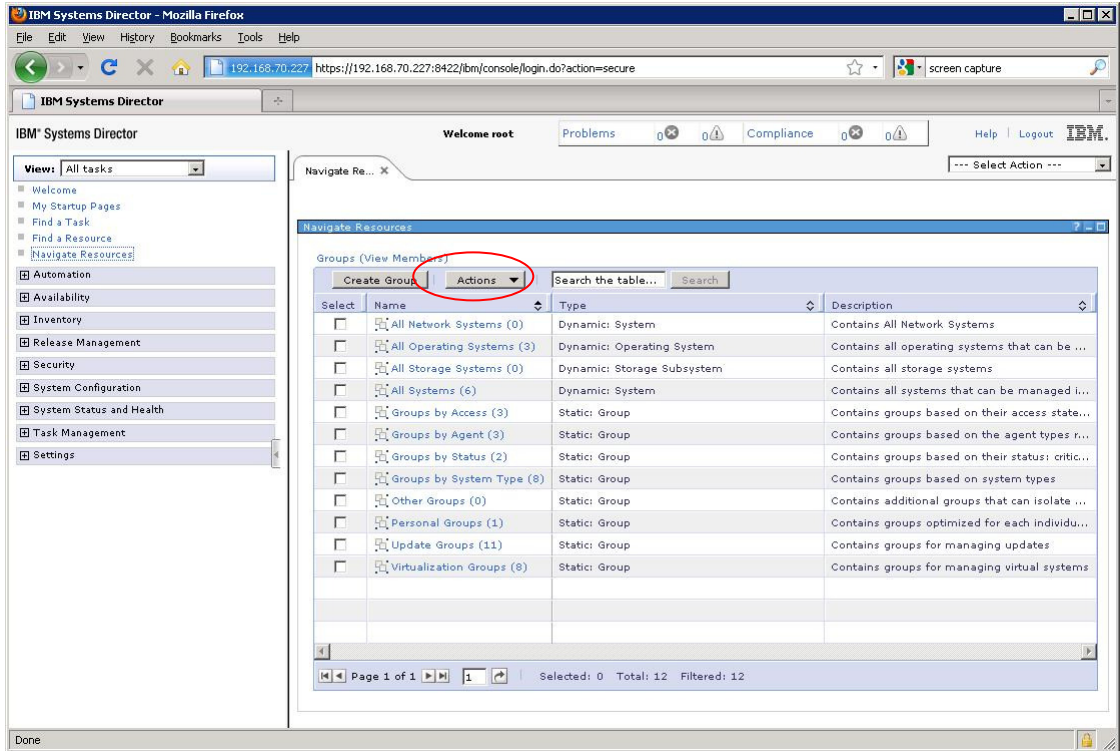
In response to a recent query this is just a quick tour of how to use filters in Director. The paraphrased question read “Can we see all servers running a certain level of the operating system?”

## Steps

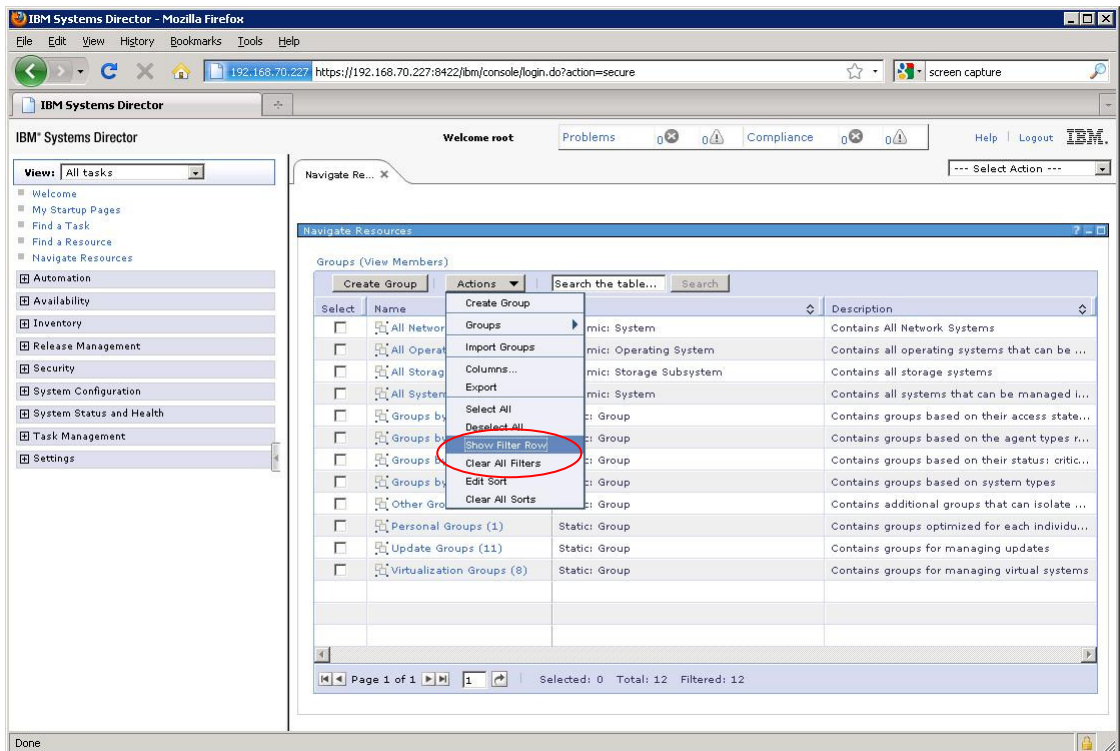
1. I have assumed you are logged in. First we click on **Navigate Resources**.



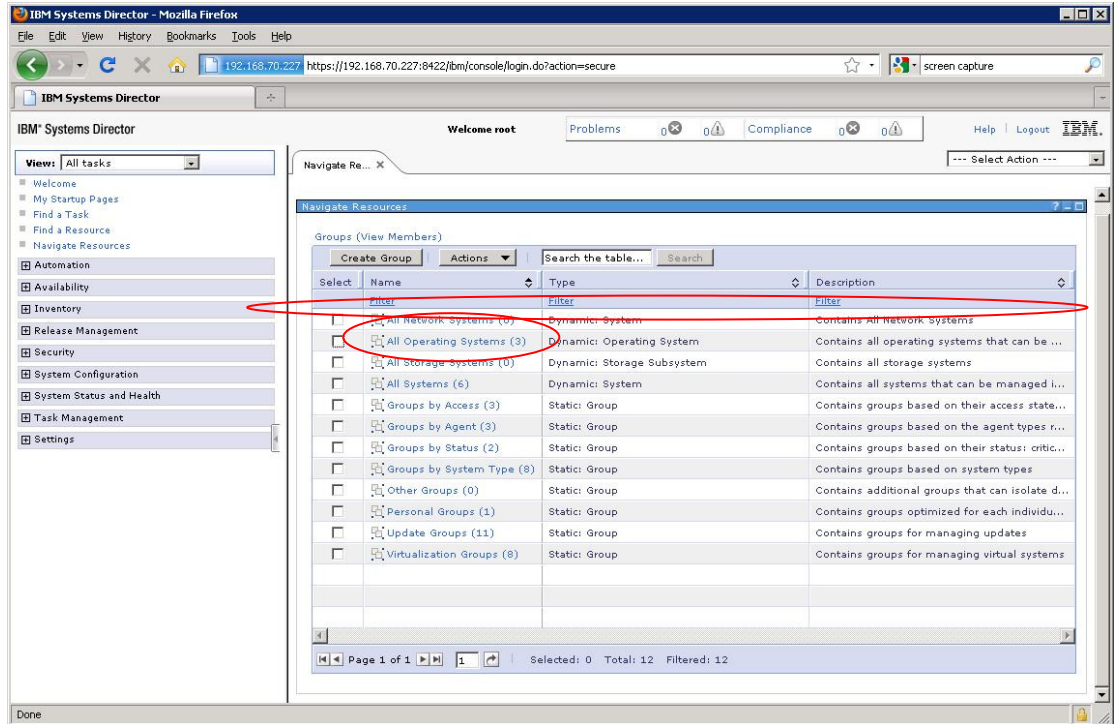
## 2. Now click **Actions**.



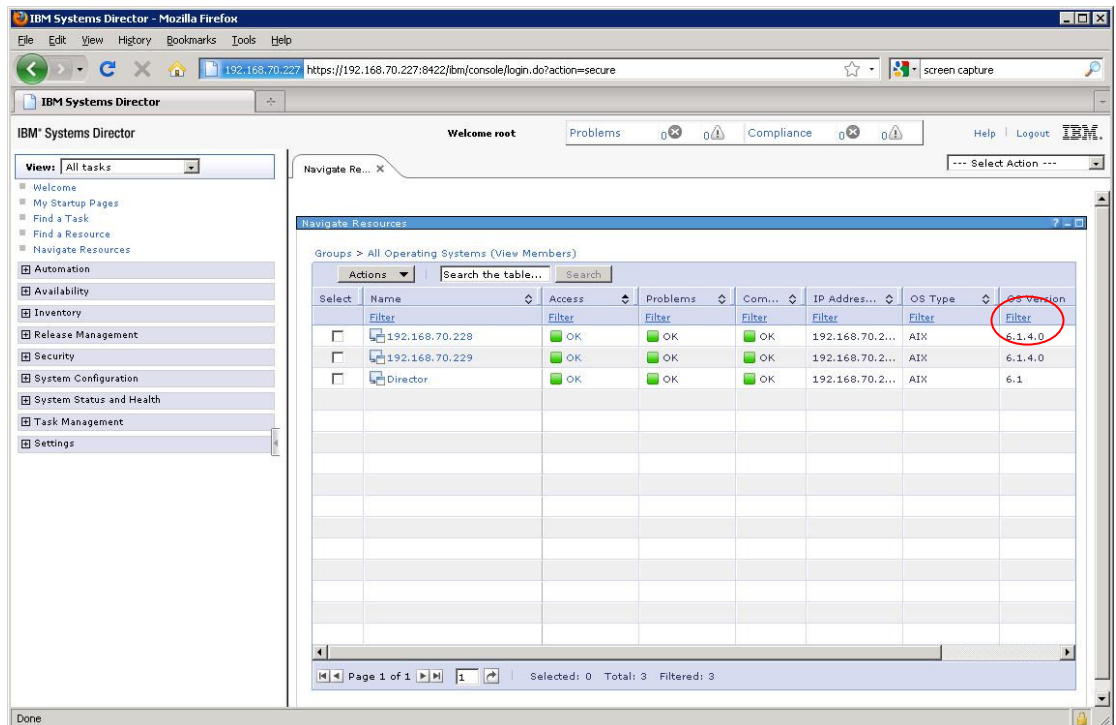
## 3. Highlight and click **Show Filter Row**.



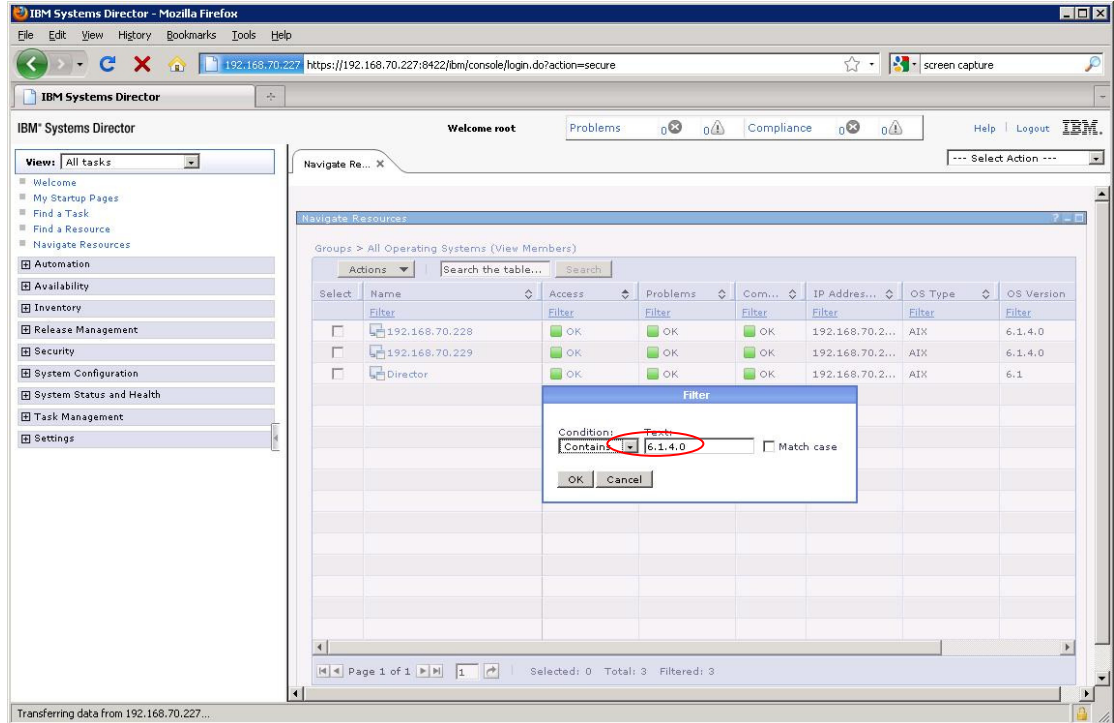
4. You now have the filter row. Click on **All Operating Systems**.



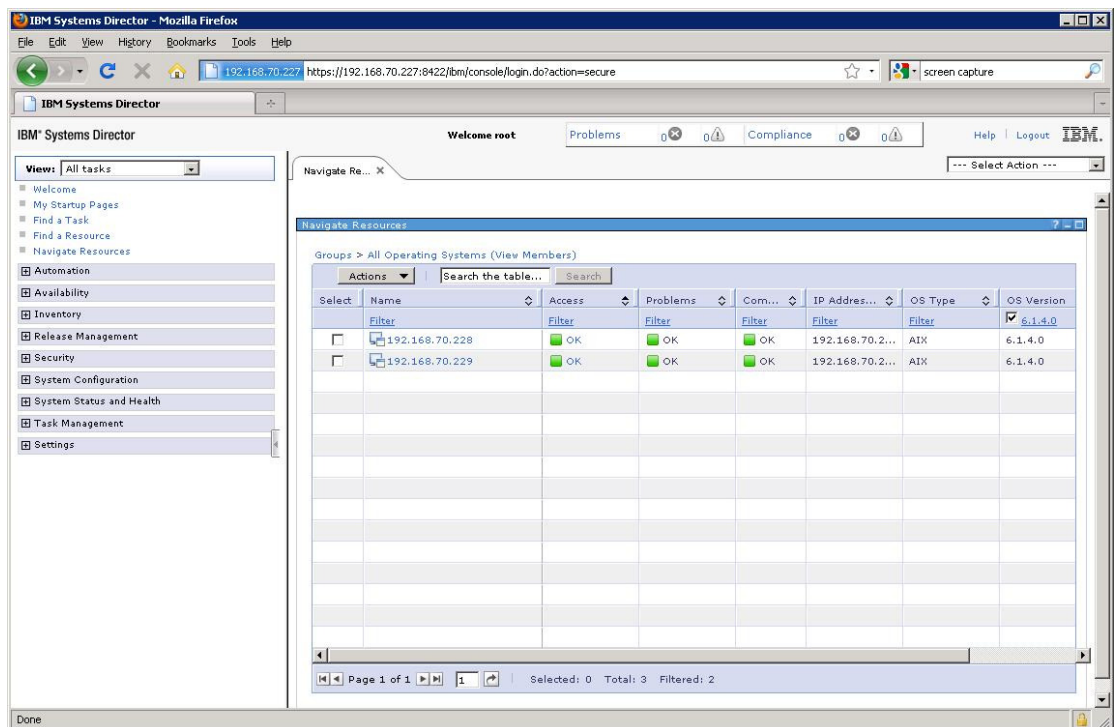
5. Click on the filter you are interested in. In this case it is the word **filter** on the far right.



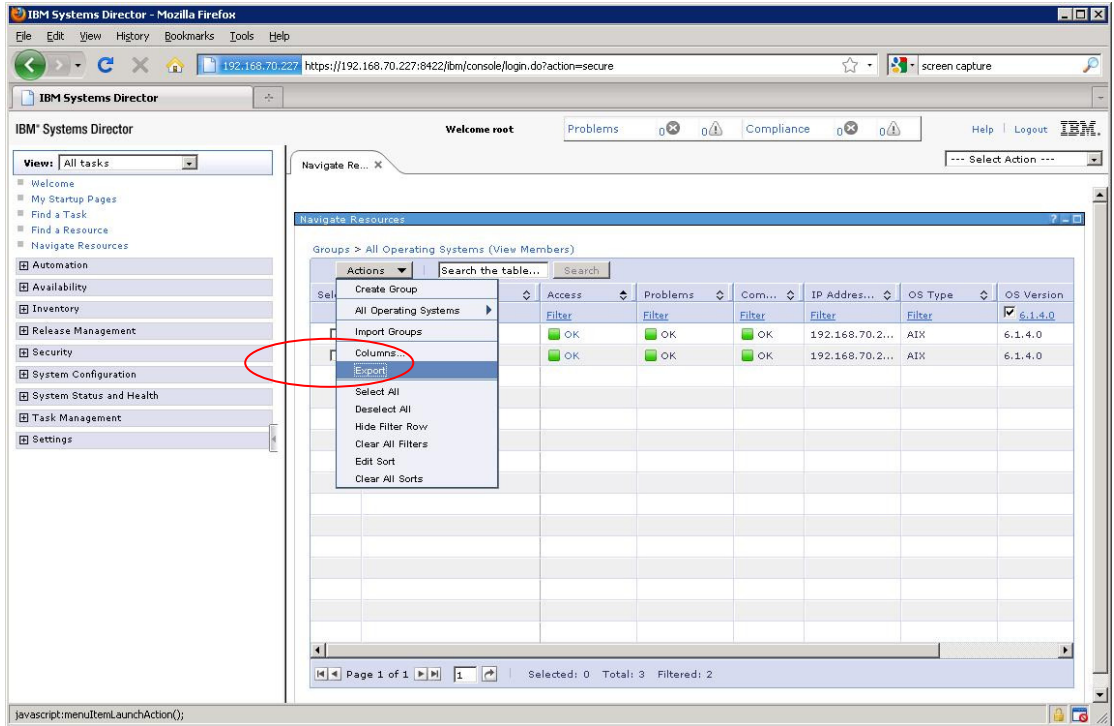
6. A prompt appears asking for what you would like to filter on. Here I entered **6.1.4.0** as my version of AIX.



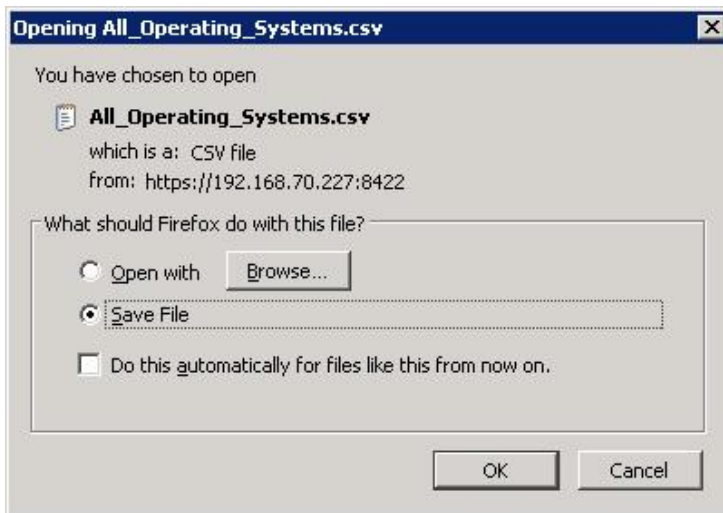
7. Press **OK** and you will get the filter result. It now just shows the two servers at that specific level.



8. Click **Actions** and highlight **Export**.



9. As you can see here you will be prompted to save the data in csv format.



## Command Line

Initially I was asked for an example of the above in the command line.

Note this was an experiment to see what could be done. It illustrates how the information you are after can be extracted from Director using its CLI commands. What it may not do is work for all situations.

The menu system in the script was borrowed from the web and I got some help from the kindly Gareth Coates to get it working as I wanted it.

Anyway the script is:

```
#!/bin/ksh
smcli lsinv -w "OSType=9" | grep m.BuildNumber > file1
print "\nPlease select an OSLevel:"
PS3="Which level would you like a report on?"
select RESPONSE in $(cat file1|awk '\{print$3\}') Exit; do
case $RESPONSE in
"") print "\tInvalid selection ($REPLY), select option by number.\n"
;;
${RESPONSE}) break ;;
esac
done
print "You have selected: $RESPONSE"
smcli lsinv -w "BuildNumber=$RESPONSE" | grep Server.DisplayName
```

The second line queries the inventory for Operating System type 9 which is AIX. It then adds the level to file1.

From the third to penultimate line the shell presents the user with a menu whose items consist of the different levels of AIX that Director manages:

```
Please select an OSLevel:
1) 6100-04-00-0000
2) Exit
Which level would you like a report on?
```

After selecting your choice you then receive a list of machines. At the time of writing this I only had my Management Server:

```
You have selected: 6100-04-00-0000
Server.DisplayName = IBM 799861X 0612AAA
Server.DisplayName = Director
```

The information here comes from the last line which again queries the inventory for all machines with the build 6100-04-00-0000 and then simply displays the machine type, model, serial and hostname.