

System Management and Access on IBM i

Tim Rowe

timmr@us.ibm.com

Business Architect

System Management



Before we get started.....

- A little background/history on IBM i Access family
- A Discussion on Strategy



What is System Access & Management



User Accessing the IBM i

Managing IBM i System



DB Engineer playing with the DB2 on i

Strategy



**Windows
Install
Only**



Any Device

Why ?

Core issues

- No support for Linux & Mac
- No support for Mobile
- Difficult to deploy for many users
- Difficult to update
- Development is costly
- Existing support is OLD – The world has changed!



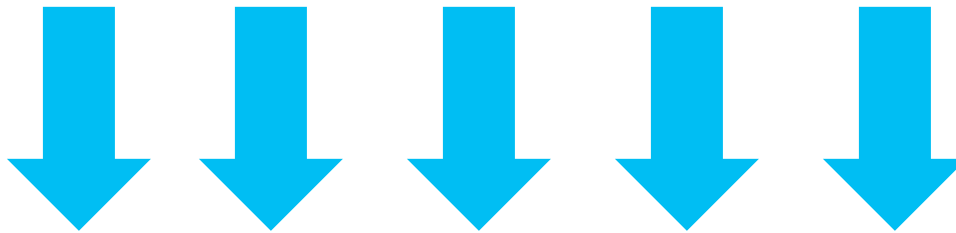
Answers

Solution themes

- Device & OS Neutral
- Flexible
- Easy to install and maintain
- Simple for a single user or 1000'
- Improved administrator situation
- Cost effective to create



iAccess for Windows



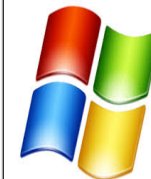
Navigator

iAccess Mobile

Access Client Solutions

Application Runtime Expert

DB2 SQL



IBM i Access Family

- The r7.2 / r7.1 IBM i Access Family of Products

- IBM i Access for Windows (5770XE1)

- Client Access
- Most mature and widely used product
 - System i Navigator
 - 5250 Display and Printer Emulation
 - Data Transfer
 - Operations Console & Virtual Control Panel



- Data Access Providers
- Remote Command
- Print Drivers

- IBM i Access for Web (5770XH2)

- IBM i System Hosted HTML based web product
- Very robust capability that has been well received
 - 5250 Display
 - Print Access
 - Database Access

Gone Mobile

- Integrated System i
- Commands
- Jobs

- IBM i Access for Linux (5770XL1)

- Lightly embraced product specifically for Linux RPM Operating Systems
 - ODBC provider
 - 5250 Display
 - Remote Command

Just Gone!

Access Client Solutions (ACS)

Core offering (platform independent)

- 5250 display and printer emulator
- Data transfer
- Printer Output
- Console consolidation
- Other misc features



Windows Application Package (Available at G.A.)

- Windows Installer MSI Package
- Data drivers (ODBC, OLEDB, .Net)
- Printer drivers



Linux Application Package (Available at G.A.)

- RPM and Debian Install Packages
- ODBC driver



Product Availability

- IBM i Access Client Solutions is identified as LPP 5733-XJ1
 - Not an IBM i OS installable LPP – Client Device only!
 - <http://www-03.ibm.com/systems/power/software/i/access/solutions.html>
- Product distributed in zip files
 - Platform Independent Core Java product
 - IBM_i_Access_Client_Solutions_LCD#_*.zip
 - Contains product jar and other supporting files
 - Windows Application Package
 - IBM_i_Access_Client_Solutions_-_Win_AP_LCD#_*.zip
 - Contains 32bit and 64bit Windows installers
 - Linux Application Package
 - IBM_i_Access_Client_Solutions_-_Linux_AP_LCD#_*.zip
 - Contains Linux RPM and Debian installers



Frequently-asked Questions

- Supported connecting to IBM i OS r7.2, r7.1 and r6.1 (5.4, 5.3, 5.2,...)
- Exact Same Connectivity
 - Same 57xxXW1 Licenses for 5250 and Data Transfer
 - Connects to the same IBM i Access Host Servers
 - Connects to the same Ports

Same Same Same

NOW!! Let's talk about the emulator

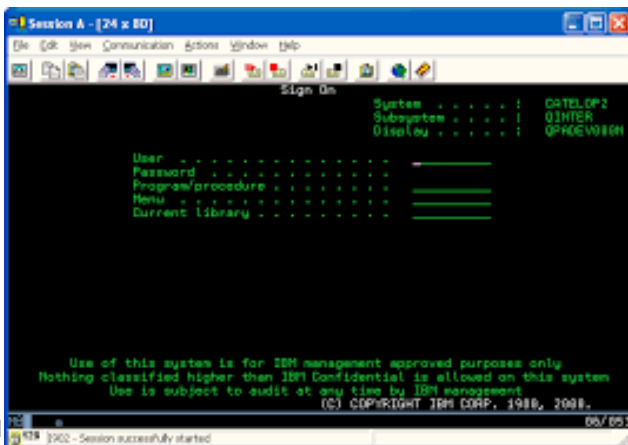
- Show of hands:
 - Who has tried the Access Client Solutions emulator?
 - Who has made the new emulator their own "go to"?
 - Who has made this emulator the organization standard?



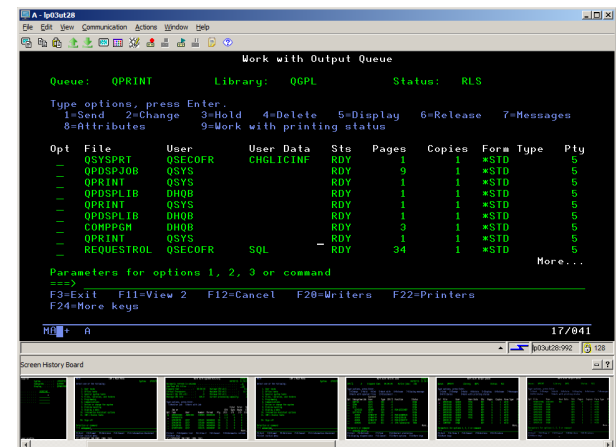
Lets Compare....



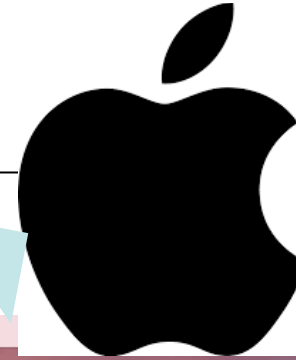
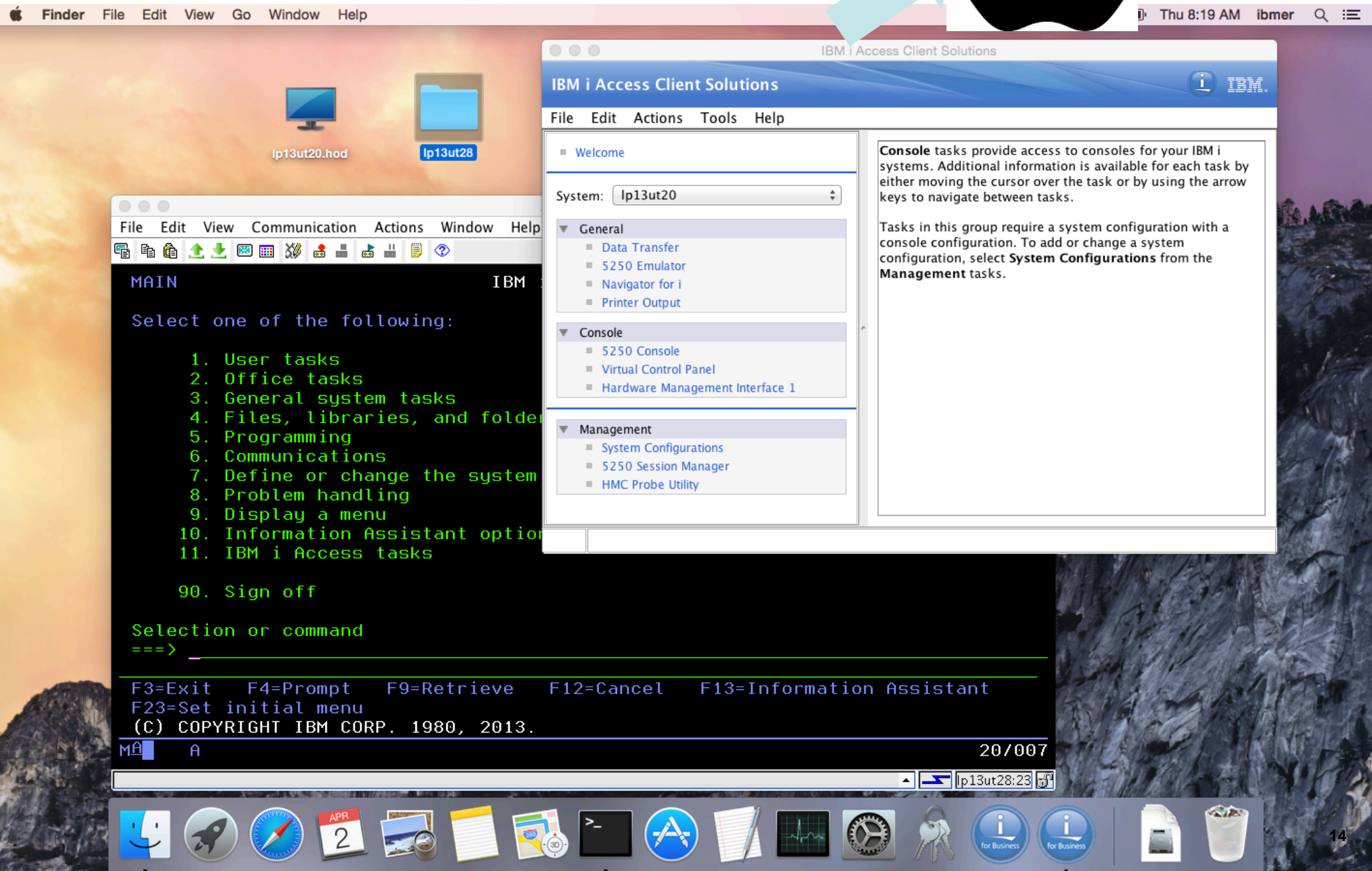
iAccess for Windows – PC5250



ACS – 5250 Emulator



Can your emulator do this?

Finder File Edit View Go Window Help Thu 8:19 AM ibmer

IBM i Access Client Solutions

IBM i Access Client Solutions

File Edit Actions Tools Help

- Welcome
- System: lp13ut20
- General
 - Data Transfer
 - 5250 Emulator
 - Navigator for i
 - Printer Output
- Console
 - 5250 Console
 - Virtual Control Panel
 - Hardware Management Interface 1
- Management
 - System Configurations
 - 5250 Session Manager
 - HMC Probe Utility

Console tasks provide access to consoles for your IBM i systems. Additional information is available for each task by either moving the cursor over the task or by using the arrow keys to navigate between tasks.

Tasks in this group require a system configuration with a console configuration. To add or change a system configuration, select **System Configurations** from the **Management** tasks.

MAIN IBM

Select one of the following:

1. User tasks
2. Office tasks
3. General system tasks
4. Files, libraries, and folders
5. Programming
6. Communications
7. Define or change the system
8. Problem handling
9. Display a menu
10. Information Assistant options
11. IBM i Access tasks

90. Sign off

Selection or command
===> _____

F3=Exit F4=Prompt F9=Retrieve F12=Cancel F13=Information Assistant
F23=Set initial menu
(C) COPYRIGHT IBM CORP. 1980, 2013.

MA A 20/007

lp13ut28:23

Or this?



A - lp13ut28

File Edit View Communication Actions Window Help

Command Entry

```

Previous commands and messages:
> wrkactjob

Request level:

Type command, press Enter.
===>
    
```

F3=Exit F4=Prompt F9=Retrieve F10=Include detailed messages
 F11=Display full F12=Cancel F13=Information Assistant F24=More Keys

MA A 18/007

IBM i Access Client Solutions - 5250 Session Manager

File Edit View Tools Help

File name	Type	Session T...	Session Na...	Host Name	Protocol	Date Modified
garage	.hod	Display	garage	garage	Telnet	Friday, March 27, 2015 9:33:3
iserieds	.hod	Display	iserieds	iserieds.dem...	Telnet - T...	Tuesday, March 3, 2015 2:30
lp03ut23	.hod	Display	lp03ut23	lp03ut23	Telnet	Monday, March 30, 2015 4:3
lp03ut28	.hod	Display	lp03ut28	lp03ut28	Telnet	Tuesday, March 31, 2015 1:0
lp06ut23	.hod	Display	lp06ut23	lp06ut23	Telnet	Monday, March 30, 2015 12:5
lp11ut11	.hod	Display	lp11ut11	lp11ut11	Telnet	Monday, March 30, 2015 12:5
lp13ut20	.hod	Display	lp13ut20	lp13ut20	Telnet	Monday, March 30, 2015 2:4
lp13ut20p	.hod	Printer	lp13ut20p	lp13ut20	Telnet	Thursday, March 19, 2015 6:0
lp13ut28	.hod	Display	lp13ut28	lp13ut28	Telnet	Wednesday, April 1, 2015 6:0
lp13ut28p	.hod	Printer	lp13ut28p	lp13ut28	Telnet	Tuesday, March 24, 2015 3:1
lp14ut23	.hod	Display	lp14ut23	lp14ut23	Telnet	Monday, March 30, 2015 4:3
lp23ut27	.hod	Display	lp23ut27	lp23ut27	Telnet	Monday, March 30, 2015 2:25
x1519p1	.hod	Display	x1519p1	x1519p1	Telnet	Monday, March 30, 2015 1:3
x1519p3	.hod	Display	x1519p3	x1519p3	Telnet	Monday, March 30, 2015 4:3

Active Sessions

A - lp13ut28

Start

New Display Session

New Printer Session

New Multiple Sessions

/home/jhansen/IBM/iAccessClient/Emulator/lp13ut28.hod

Red Hat Enterprise Linux Workstation

Release 6.6 (Santiago)
 Kernel Linux 2.6.32-504.12.2.el6.x86_64
 GNOME 2.28.2

Hardware

Memory: 7.6 GiB

Processor 0: Intel(R) Core(TM) i7-
 Processor 1: Intel(R) Core(TM) i7-
 Processor 2: Intel(R) Core(TM) i7-
 Processor 3: Intel(R) Core(TM) i7-
 Processor 4: Intel(R) Core(TM) i7-
 Processor 5: Intel(R) Core(TM) i7-
 Processor 6: Intel(R) Core(TM) i7-
 Processor 7: Intel(R) Core(TM) i7-

About

IBM i Access Client Solutions
 (64-bit)
 Version: 1.1.4
 Build id: 5063
 March 19, 2015 11:50:41 AM CDT

java.version: 1.8.0_31
 java.vendor: Oracle Corporation
 java.home: /usr/lib/jvm/java-1.8.0-openjdk-1.8.0.31-1.b13.el6_x86_64/jre

Copyright(c) IBM Corporation 2012, 2015
 All Rights Reserved

OK

IBM i Access Client Solutions

File Edit Actions Tools Help

Welcome

System: lp13ut28

- General
 - Data Transfer
 - 5250 Emulator
 - Navigator for i
 - Printer Output
- Console
 - 5250 Console
 - Virtual Control Panel
 - Hardware Management Interface 1
- Management
 - System Configurations
 - 5250 Session Manager
 - HMC Probe Utility

5250 Console starts a 5250 display session to the console of the selected system. This task requires a system configuration for either a LAN console or an HMC console.

The LAN Console is for managing a single system and includes the following features:

- an optional watermark containing the word Console.
- an optional console bar displaying the system type, model, serial number, partition, current IPL Mode, and System Reference Codes (SRC).

To add or change a system configuration for a LAN console, select **System Configurations** from the **Management** tasks. On the **Console** tab, select **LAN Console** and enter the **Service host name**.

Hardware Management Console (HMC) is for managing multiple systems or partitions.

To add or change a system configuration for an HMC console, select **System Configurations** from the **Management** tasks. On the **Console** tab, select **HMC 5250 Console** and enter the **Host name / IP address**.

My emulator (and all its settings/profiles) can live here...



Local Disk (C:)



307 GB free of 465 GB

Or here...



Or here!



w32users (\\rchfs\group) (U:)



253 GB free of 807 GB

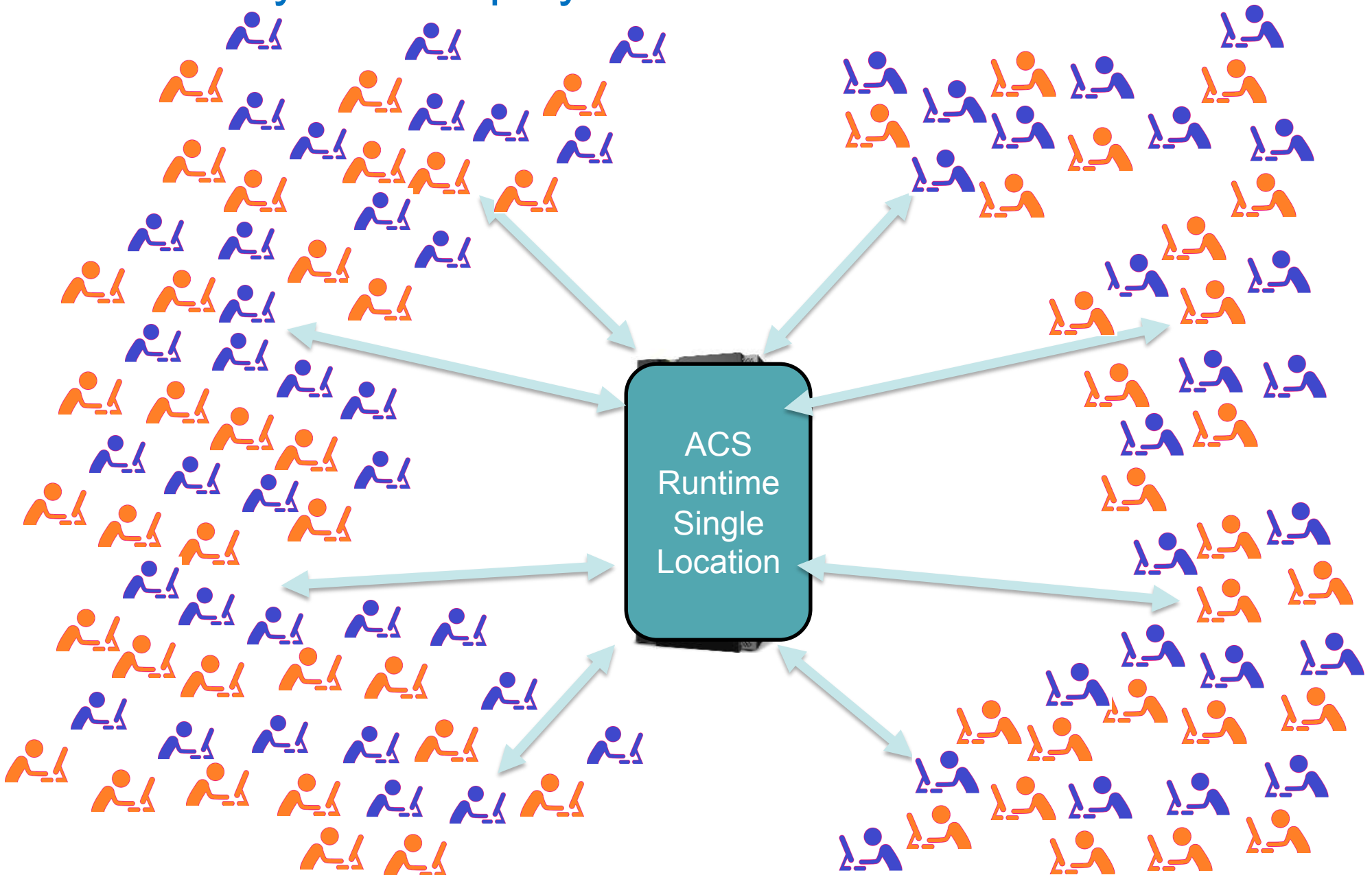


afsrch (\\smb1.rchland.ibm.com) (Z:)



68.6 GB free of 68.6 GB

Central System Deployment



Or here!

How about yours?



afsrcd (smb1.rchland.ibm.com) (Z:)

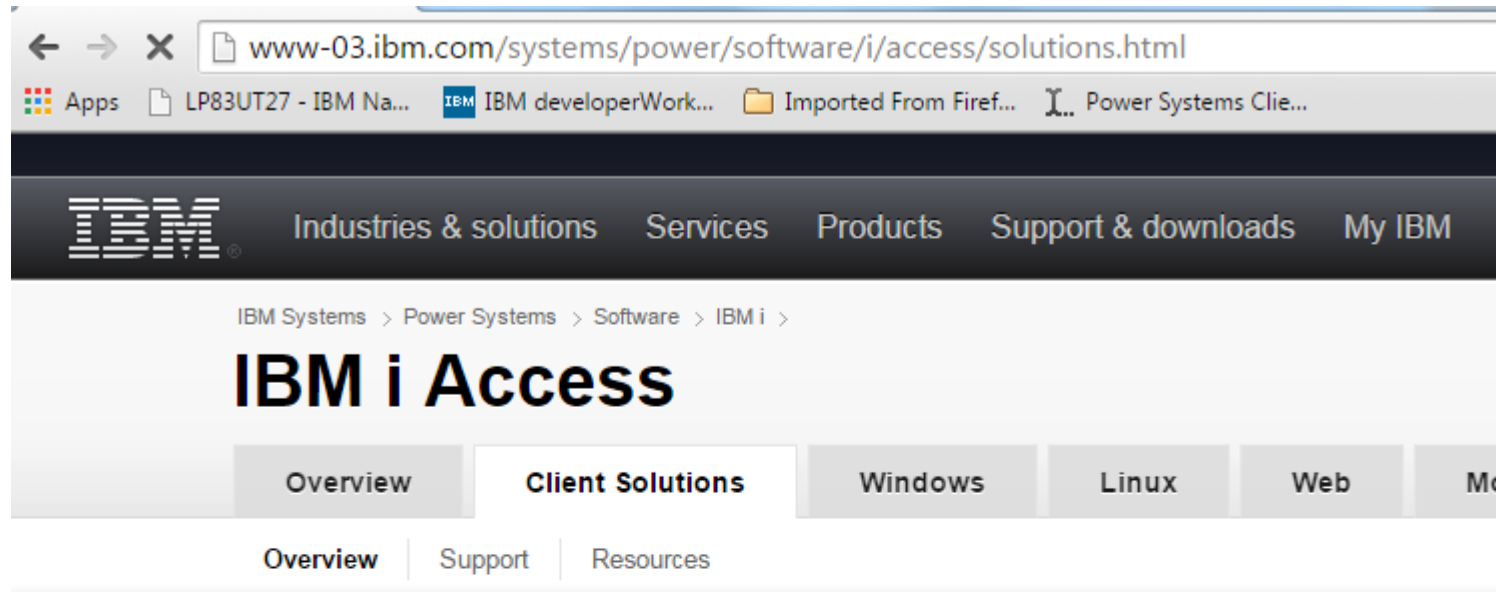
68.6 GB free of 68.6 GB

How do you get it ???

ESS ?

EASY WEB DOWN LOAD!

NEW in the Past 3 Months!!!



IBM i Access Client Solutions is the newest member of the IBM i Access family. It provides a Java based, platform-independent interface that runs on most operating systems that support Java, including Linux, Mac, and Windows™.

IBM i Access Client Solutions consolidates the most commonly used tasks for managing your IBM i into one simplified location. The latest version of IBM i Access Client Solutions is available to customers with an IBM i software maintenance contract.

- [Download IBM i Access Client Solutions base package](#)
- [QuickStartGuide](#)
- [GettingStarted](#)
- ↓ [Updates](#)

Access videos



- ▶ [Introduction to IBM i Access Client Solutions \(00:01:17\)](#)
- ▶ [All IBM i Access videos](#)




IBM i Access Client Solutio x

← → ↻ <https://www-01.ibm.com/marketing/iwm/iwm/web/preLogin.do?source=swg-ia>

Apps LP83UT27 - IBM Na... IBM developerWork... Imported From Firef... Power Systems Clie...

United States

 Industries & solutions Services Products Support & downloads My IBM

IBM i Access Client Solutions

- IBM Software**
- Products
- Services
- Downloads
- Library
- News
- Training and certification
- Events
- Support

- Communities:**
- IBM Business Partners
 - ISVs
 - Developers

Returning visitors

IBM ID: (usually e-mail address)*

- [Forgot your IBM ID?](#)
- [Get an IBM ID](#)

Password*

- [Forgot your password?](#)

Not registered?

If you do not have a universal IBM user ID, please [register here](#), then return to sign in for this offering.

To find out more about the benefits of having an IBM Registration ID, visit the [IBM ID Help and FAQ](#).

License

To view the license, click the "View license" link below. If this displays in a second browser window, please use the "Back" button on your browser to return to the previous page, or close the window or browser session that is displaying this page.

[→ View license](#)

By checking "I agree" box below you agree that (1) you have had the opportunity to review the license and (2) you agree to be bound by its terms. If you disagree, click "I cancel" below.

I agree*

I agree

By clicking the "I confirm" button below, I confirm my Privacy selection and acceptance of the license. By clicking the "I cancel" button, I cancel my Privacy selection and acceptance of the license.

I confirm

I cancel

Key topics

- Smarter Planet
- Analytics
- Big Data

Information for

- C-suite executives
- Industries
- Managed & Cloud

Try & buy

- IBM Cloud marketplace
- Cloud solutions
- Bluemix

About IBM

- Latest news
- IBM's blog
- IBM's Centennial

Popular links

- IBM Mobile
- Careers
- Fix central

IBM Software
Products
Services
Downloads
Library
News
Training and certification
Events
Support

- Communities:**
- IBM Business Partners
 - ISVs
 - Developers



IBM i Access Client Solutions

Downloads

IBM i Access Client Solutions
English
2015-10-05

To download using Download Director, select the files you want below and click on 'Download now'. [Learn more.](#)

You can also download the files [using http.](#)

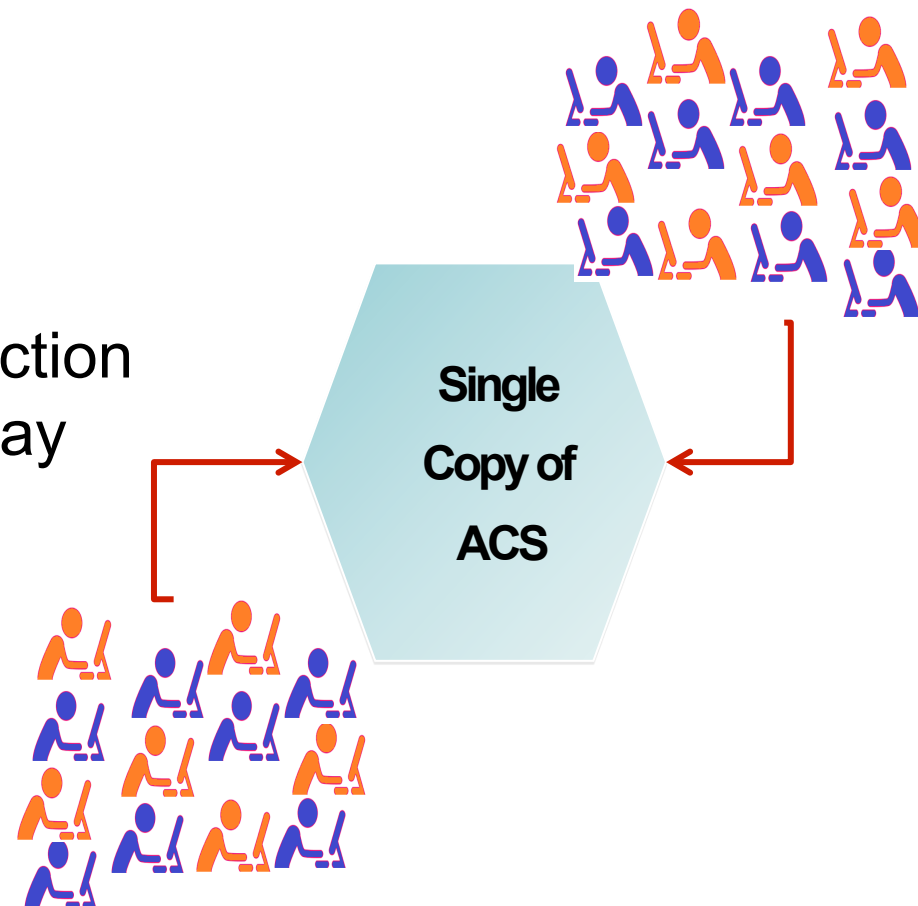


- Select all files
- IBM i Access Client Solutions**
IBMiAccess_v1r1.zip (64 MB)
- Getting Started**
[GettingStarted_en.html](#) (89 KB)

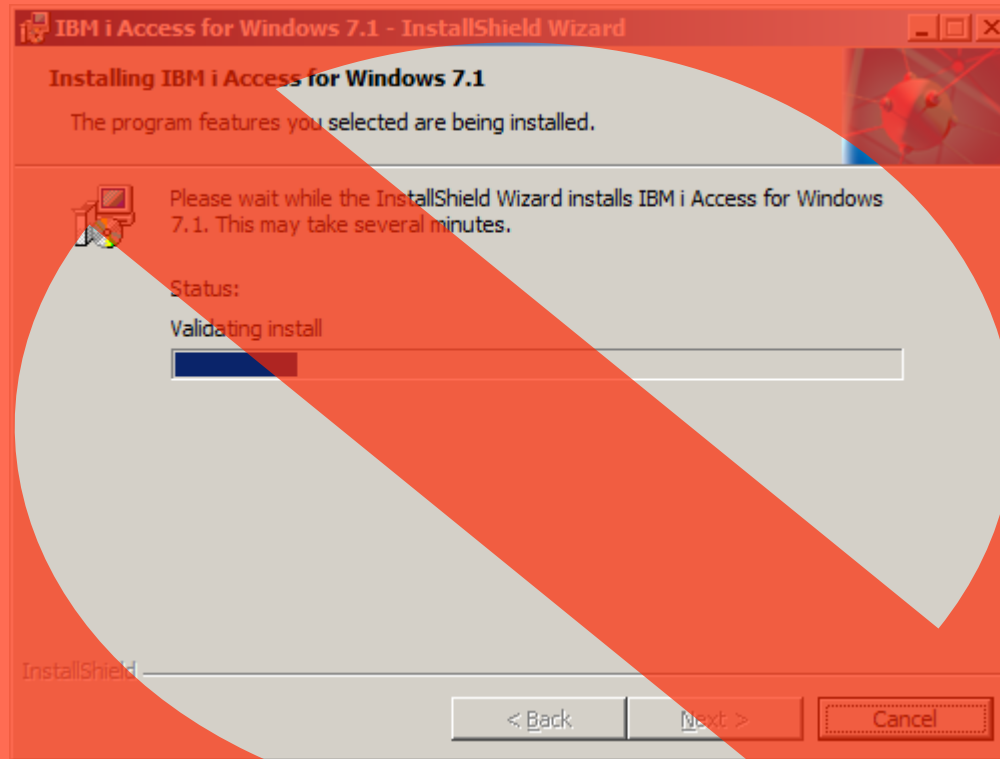
Improved ACS User Deployment – Single & Multi User

New Deployment Wizard to Simplify and Improve ACS Deploy

- Administrator Options for Multi User Deployment
- Create Desktop Shortcut to Runtime location
 - Local or Network location
- Create File Associations
 - Old .ws files
 - New .hod files
 - Data Transfer
- Customization of Available Function
 - Control what functions display



How about deployment time?

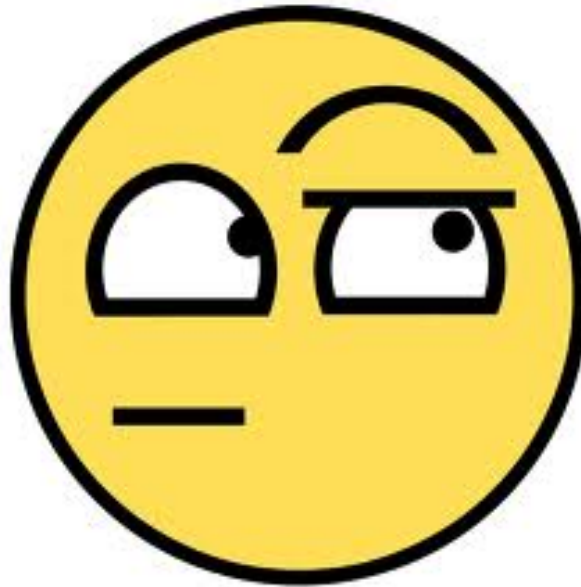


- go from "just downloaded" to "deployed and running" in...

Less than a minute!



Really?



Yes, really!

1. Extract the downloaded .zip file
2. browse into the Start_Programs directory
3. Find the appropriate launcher and double-click!

Auto-push configuration

- Not only that, but product settings can be automatically pushed out to all users!
- This includes emulator stuff!
 - 5250 session profiles
 - Color mappings
 - Key mappings
 - Stuff we're going to talk about
 - etc.
- See product documentation for 'com.ibm.iaccess.autoimport' and 'com.ibm.iaccess.autoimport.version' properties for more info
- Article on deployment!!!

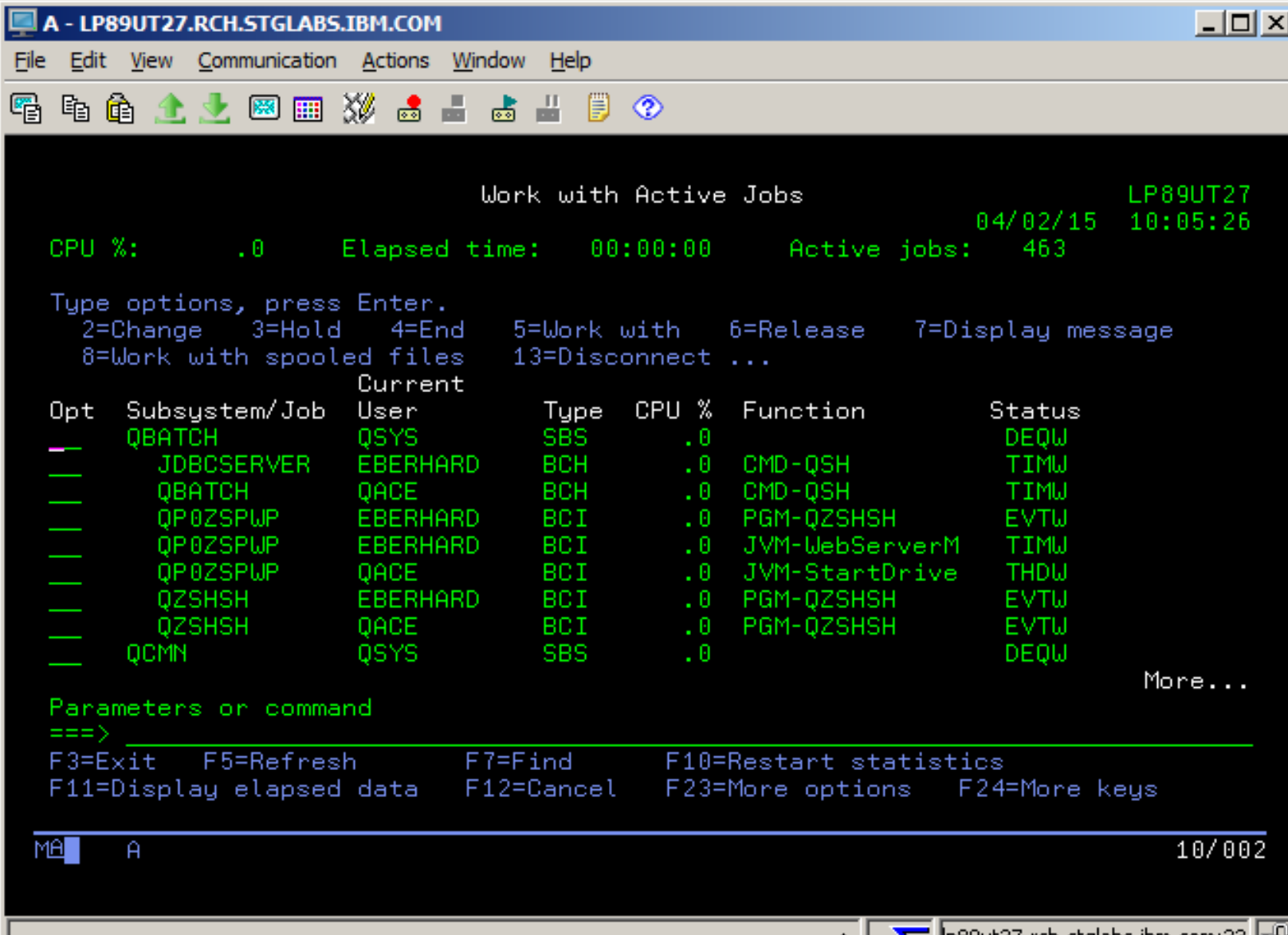
<http://www.ibm.com/developerworks/ibmi/library/i-ibmi-access-client-solutions-customization-trs/index.html?ca=drs->

How about new features?



**Mouse wheel
recognition!**

How about new features?



```
A - LP89UT27.RCH.STGLABS.IBM.COM
File Edit View Communication Actions Window Help
[Icons]

Work with Active Jobs LP89UT27
04/02/15 10:05:26
CPU %: .0 Elapsed time: 00:00:00 Active jobs: 463

Type options, press Enter.
2=Change 3=Hold 4=End 5=Work with 6=Release 7=Display message
8=Work with spooled files 13=Disconnect ...

Current
Opt Subsystem/Job User Type CPU % Function Status
---
QBATCH QSYS SBS .0
JDBCSERVER EBERHARD BCH .0 CMD-QSH TIMW
QBATCH QACE BCH .0 CMD-QSH TIMW
QP0ZSPWP EBERHARD BCI .0 PGM-QZSHSH EVTW
QP0ZSPWP EBERHARD BCI .0 JVM-WebServerM TIMW
QP0ZSPWP QACE BCI .0 JVM-StartDrive THDW
QZSHSH EBERHARD BCI .0 PGM-QZSHSH EVTW
QZSHSH QACE BCI .0 PGM-QZSHSH EVTW
QCMN QSYS SBS .0
More...

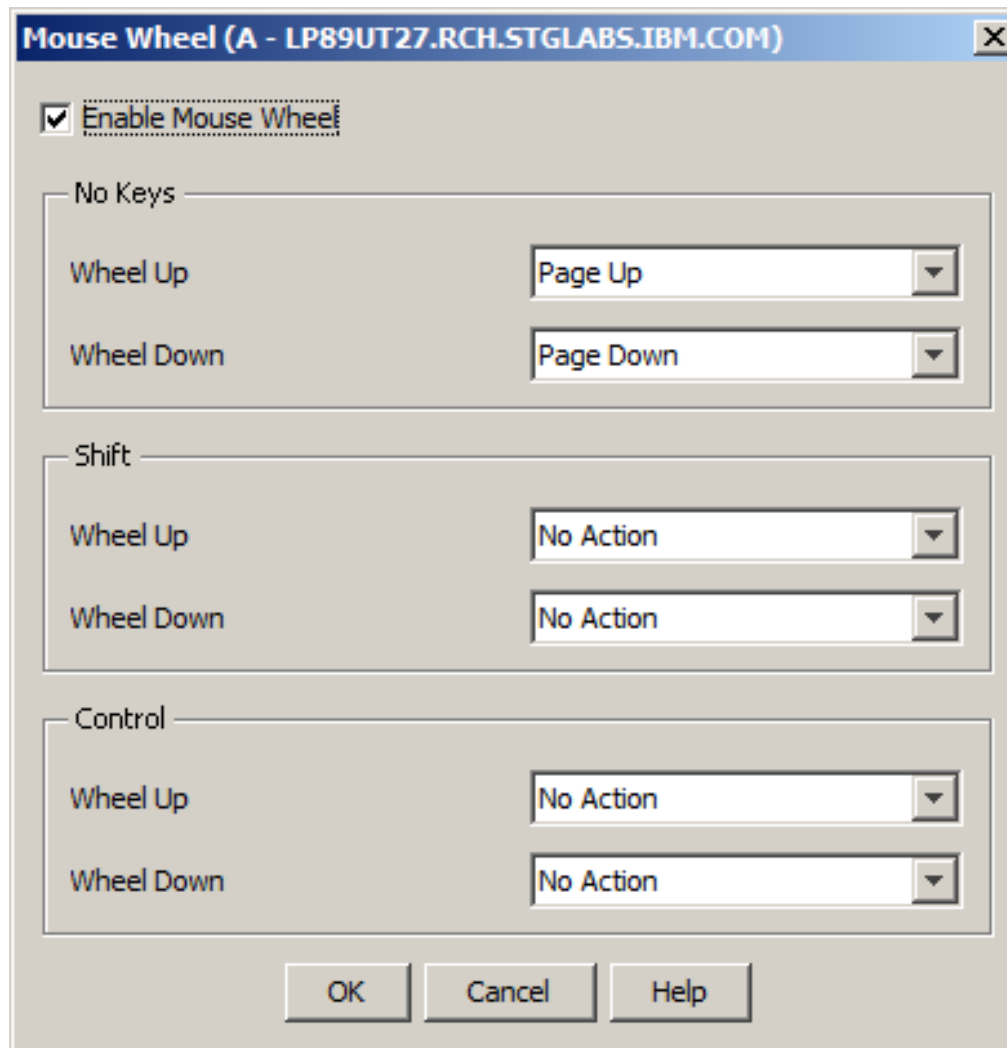
Parameters or command
===>
F3=Exit F5=Refresh F7=Find F10=Restart statistics
F11=Display elapsed data F12=Cancel F23=More options F24=More keys

MA A 10/002
```

Also works with other scrolling devices, like your laptop touchpad!

Mouse wheel default options

- Edit->Preferences->Mouse Wheel



Watermark Support??

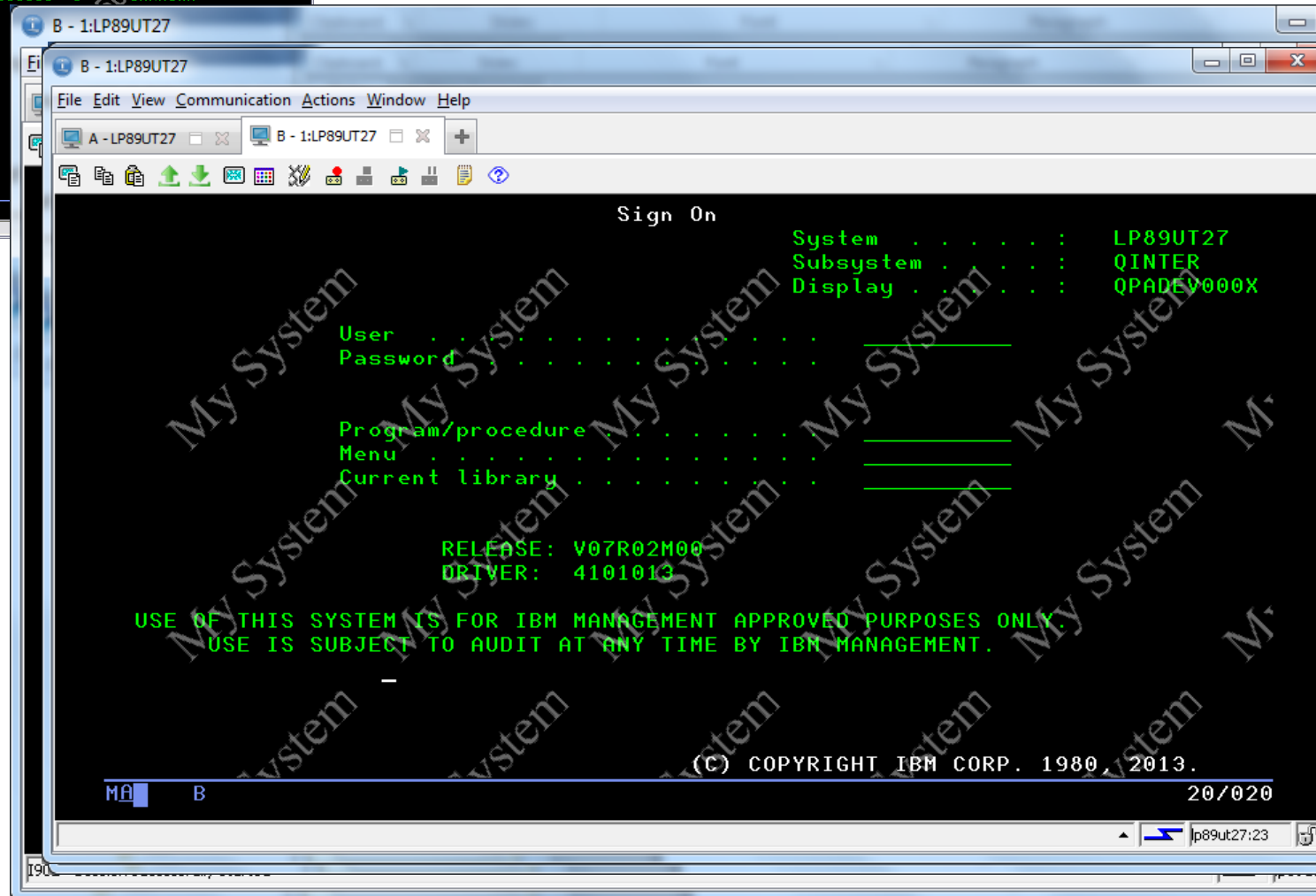
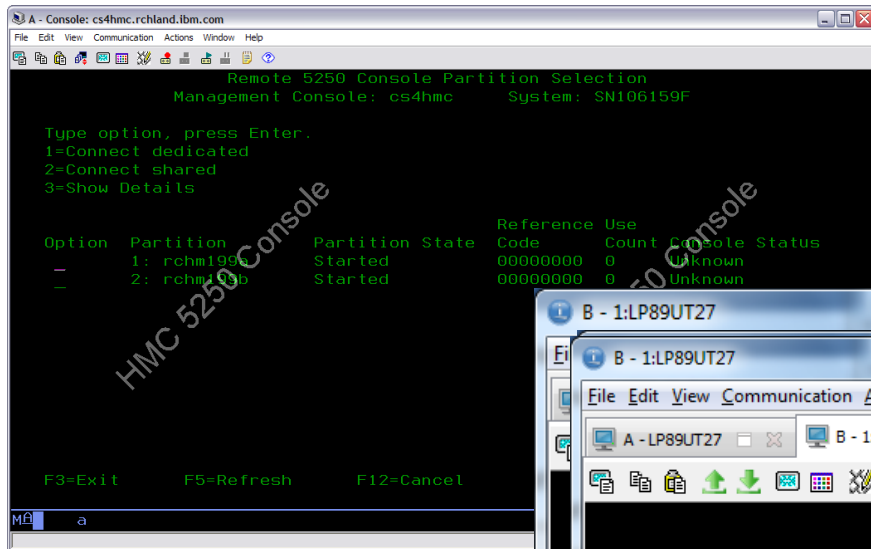


Image watermarks

Center, tile,
or stretch!



Watermark Options [X]

Watermark type: Text Image

Display text:

Display text color: White [v] [color swatch]

Font: Times New Roman [v]

Image location: content/uploads/sites/6/2013/06/IBM-logo.jpg


Browse...

Position: Center [v]

Vertical padding: 5 [v]

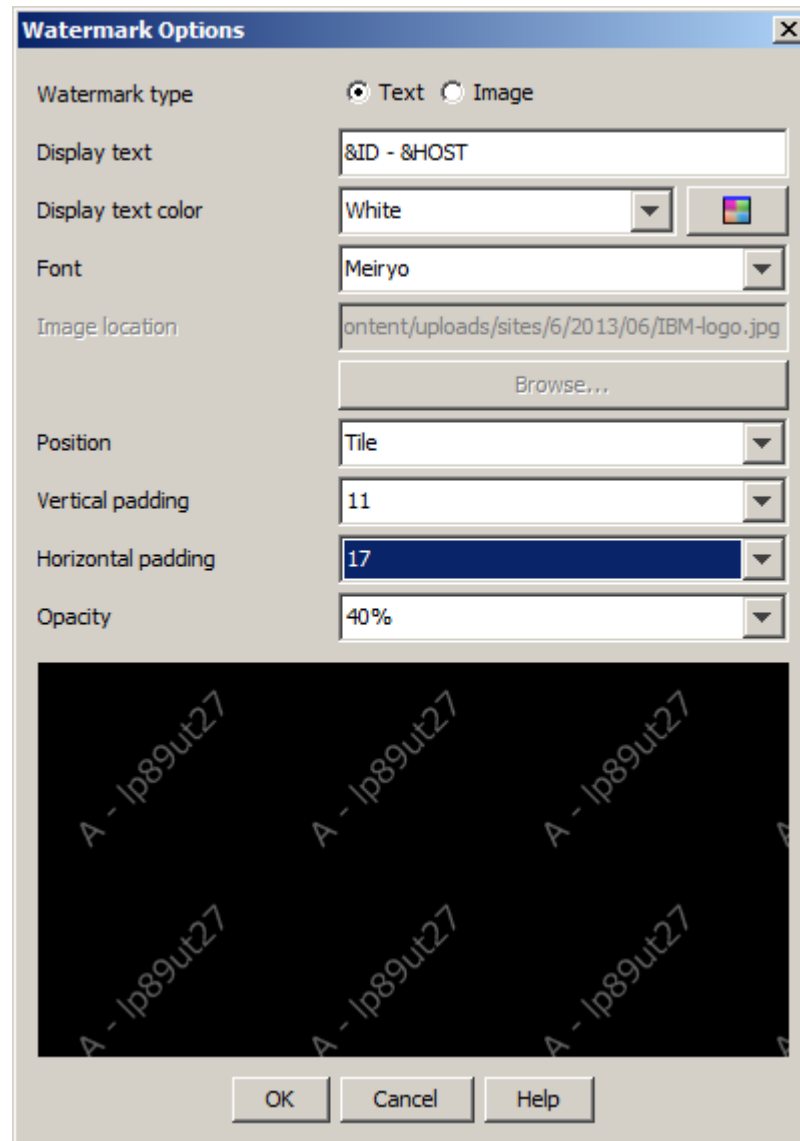
Horizontal padding: 5 [v]

Opacity: 40% [v]



OK Cancel Help

Text watermarks



A - LP89UT27.RCH.STGLABS.IBM.COM

File Edit View Communication Actions Window Help

Command Entry LP89UT27

Request level: 1

Previous commands and messages:

(No previous commands or messages)

Type command, press Enter.

===> _____

F3=Exit F4=Prompt F9=Retrieve F10=Include detailed messages
F11=Display full F12=Cancel F13=Information Assistant F24=More keys

MA A Bottom

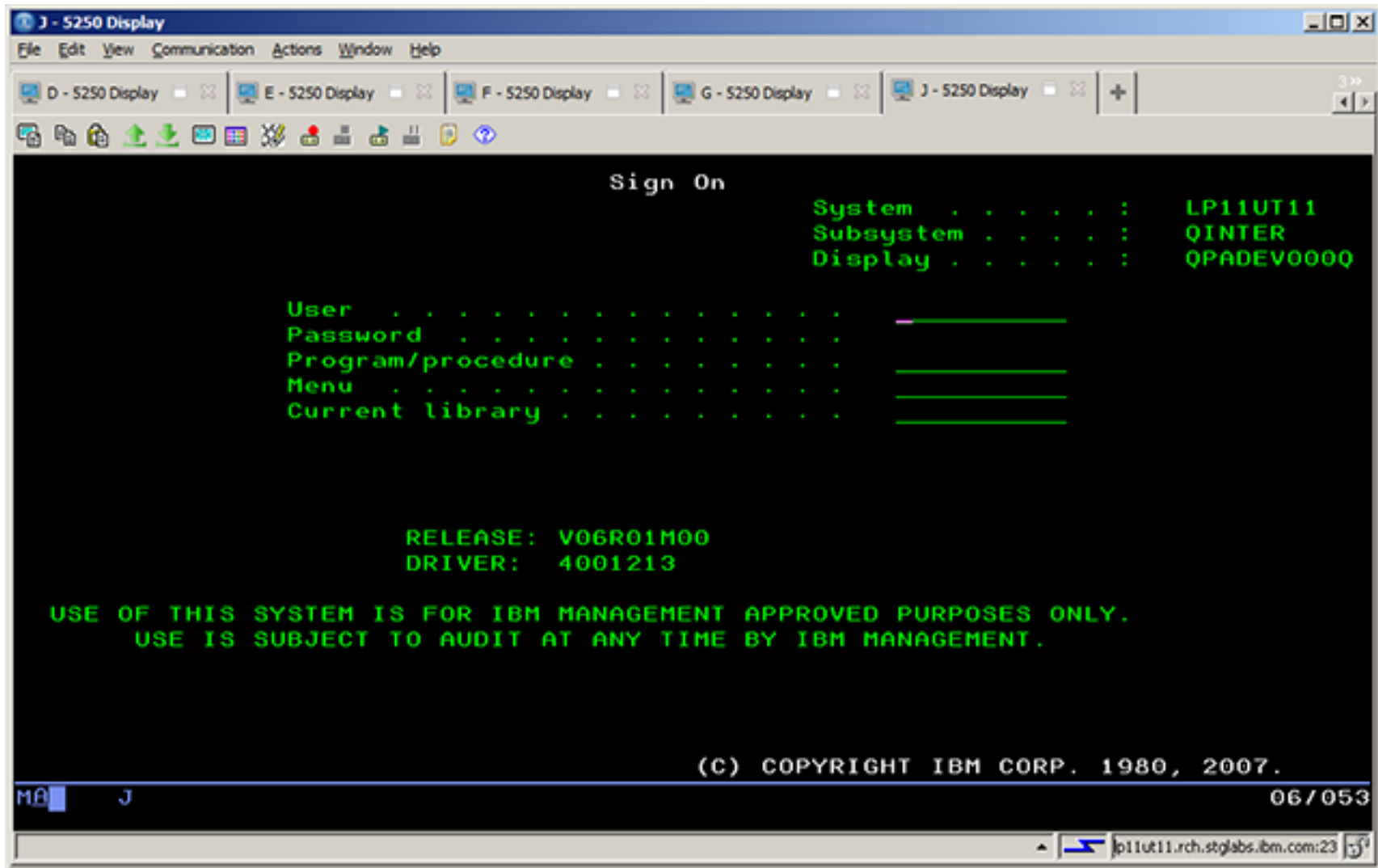
18/007

lp89ut27.rch.stglabs.ibm.com:23

Text Watermark – Special keywords

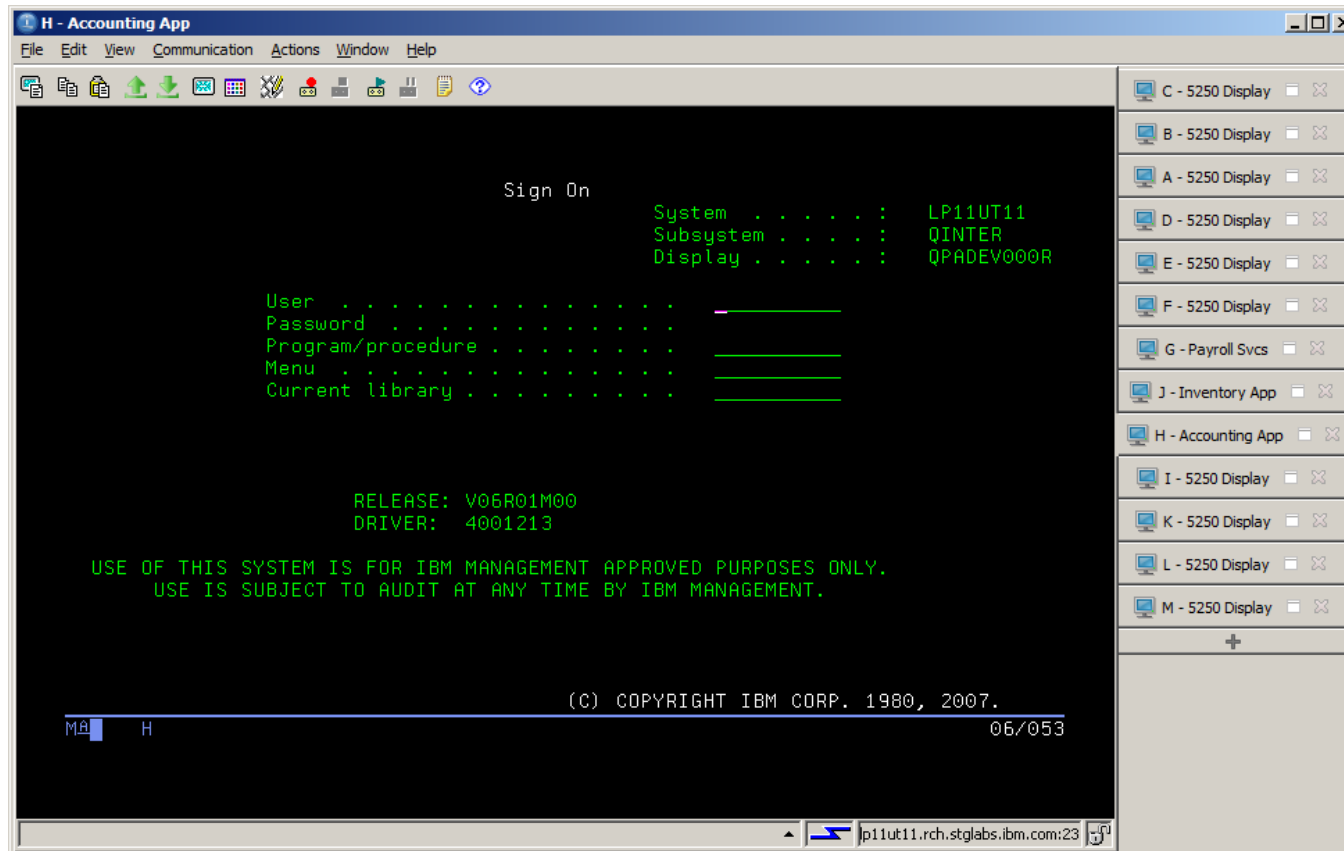
- **&COMPN**
Computer name
- **&HOST**
Host name defined within the emulator session
- **&ID**
Current session ID
- **&NAME**
Current session name
- **&USERN**
User name that started the JVM ***NOT IBM i user profile**

Oh, yeah, and my emulator has TABS! How does that make you feel?



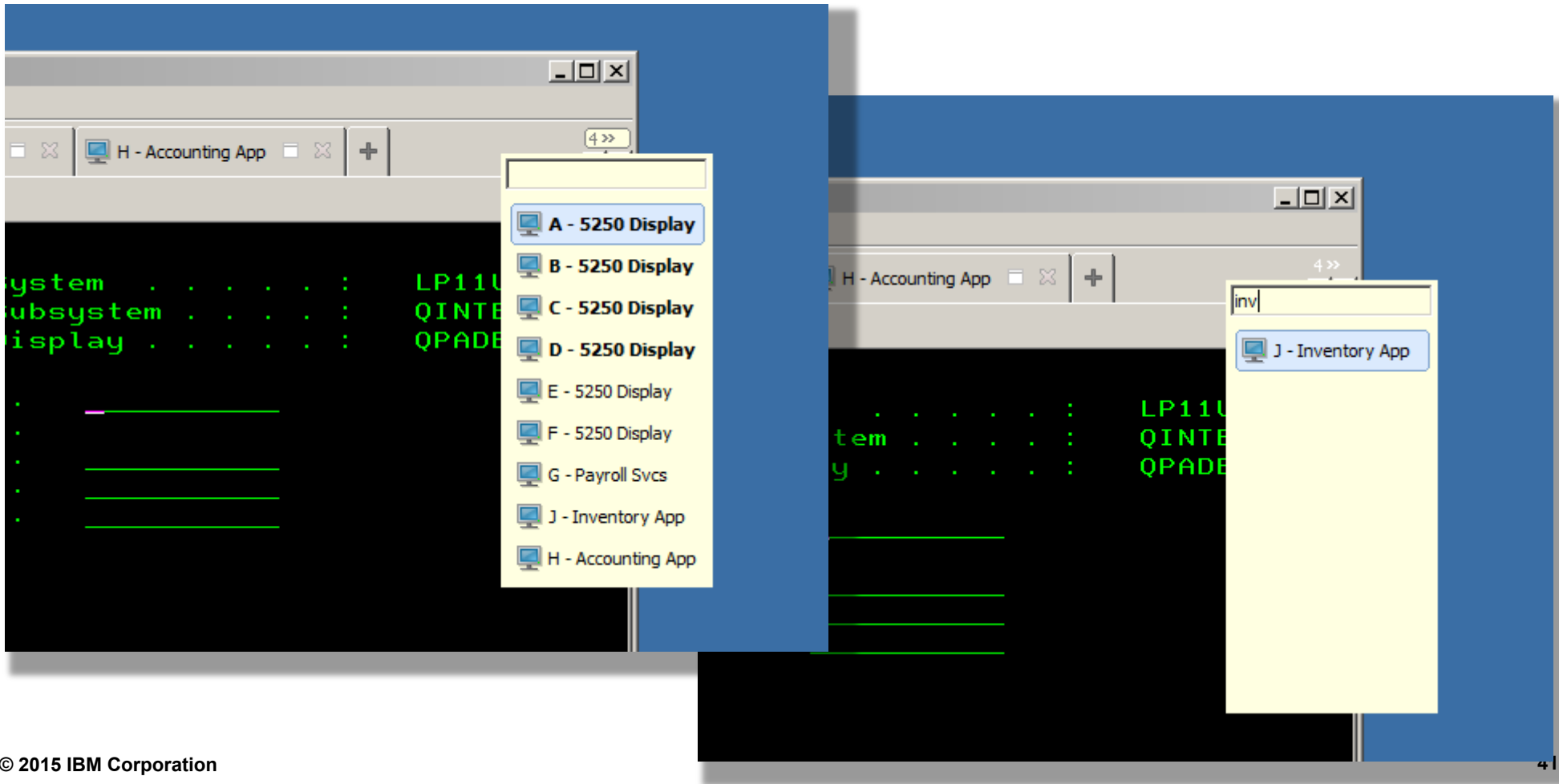
And you can do a bunch with them!

- You can drag them around (even between windows)
- You can detach them to their own window
- you can even choose where to place them on the screen



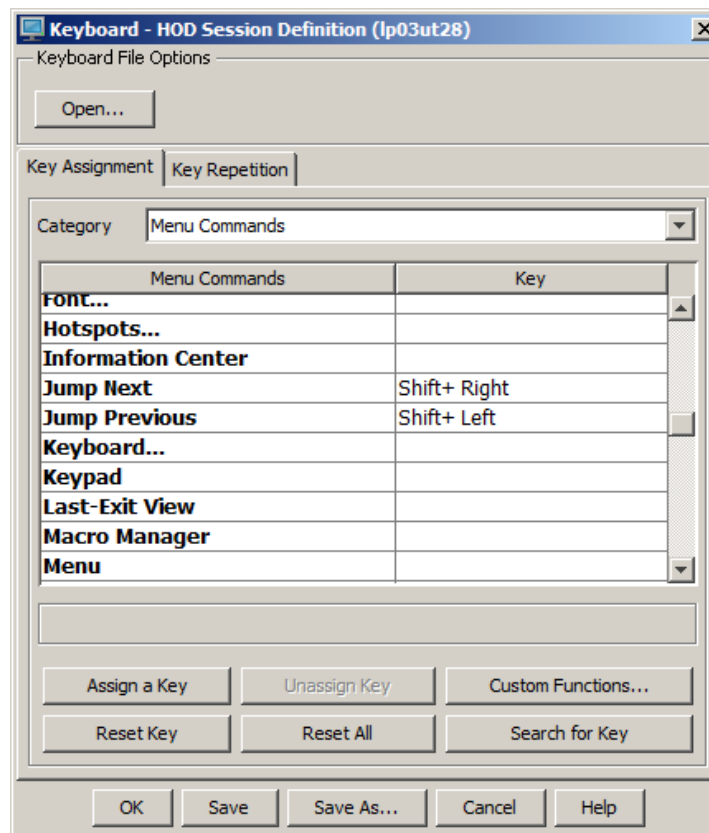
And you can do a bunch with them!

- Not enough room on the screen? NO PROBLEM!

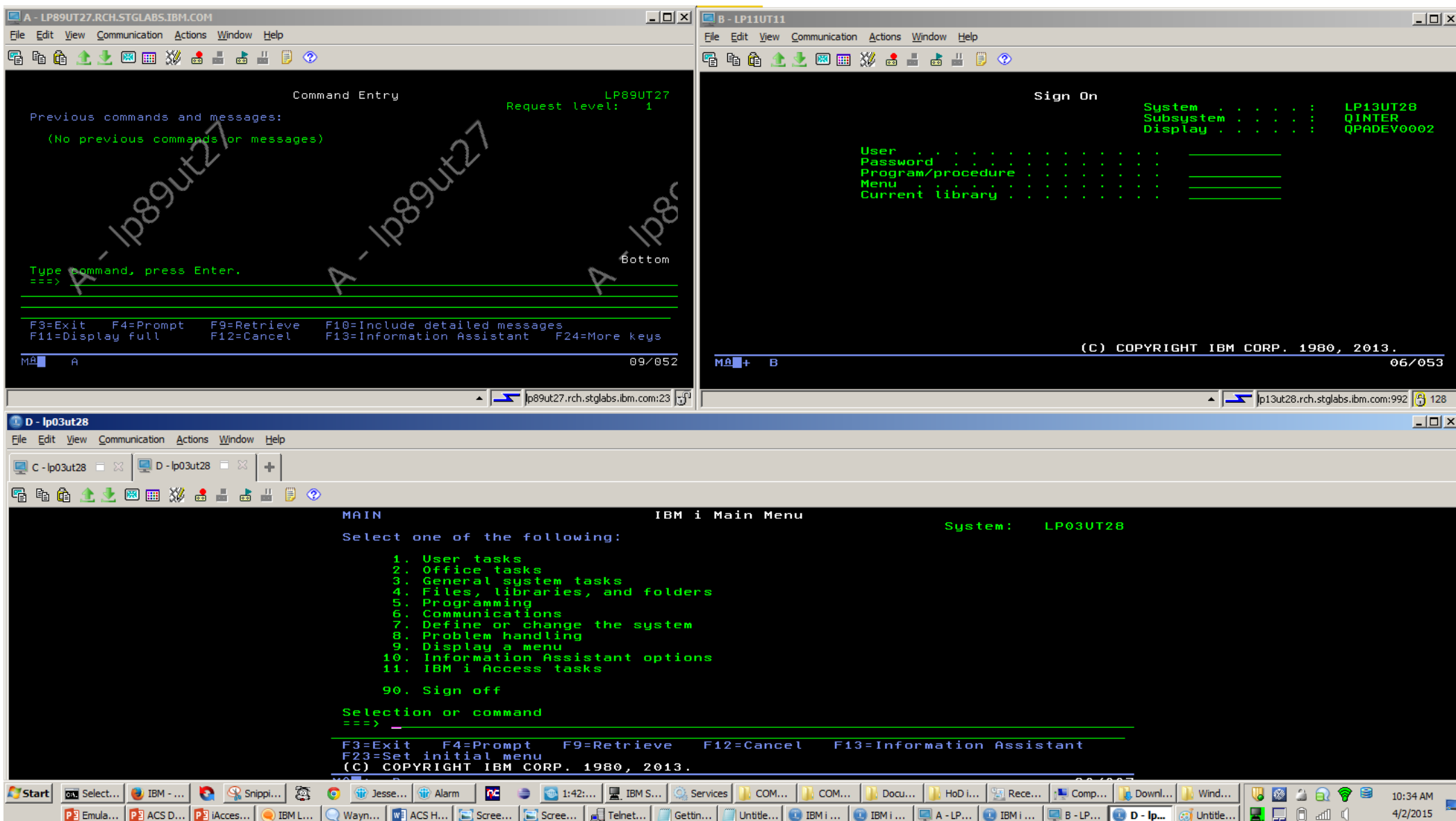


Yes, you can switch between tabs with the keyboard

- <alt>+<tab> switches between windows
- <ctrl>+<tab> switches between tabs within a window (you can customize)
- You can also define a key sequence for "Jump Next" and "Jump Previous", which will traverse all 5250 sessions (different tabs and windows)



Enhanced batch files



The image displays three overlapping terminal windows from an IBM i environment, illustrating the process of logging in and reaching the main menu.

Window A (Top Left): Titled "A - LP89UT27.RCH.STGLABS.IBM.COM". It shows a "Command Entry" screen with the text "Previous commands and messages: (No previous commands or messages)". The system ID is "LP89UT27" and the "Request level" is "1". A prompt "Type command, press Enter. ==>" is visible. At the bottom, there are function key definitions: F3=Exit, F4=Prompt, F9=Retrieve, F10=Include detailed messages, F11=Display full, F12=Cancel, F13=Information Assistant, and F24=More keys. The status bar shows "MA A" and "09/052".

Window B (Top Right): Titled "B - LP11UT11". It shows a "Sign On" screen. The system information is "System : LP13UT28", "Subsystem : QINTER", and "Display : QPADEV0002". There are input fields for "User", "Password", "Program/procedure", "Menu", and "Current library". The status bar shows "MA + B" and "06/053".

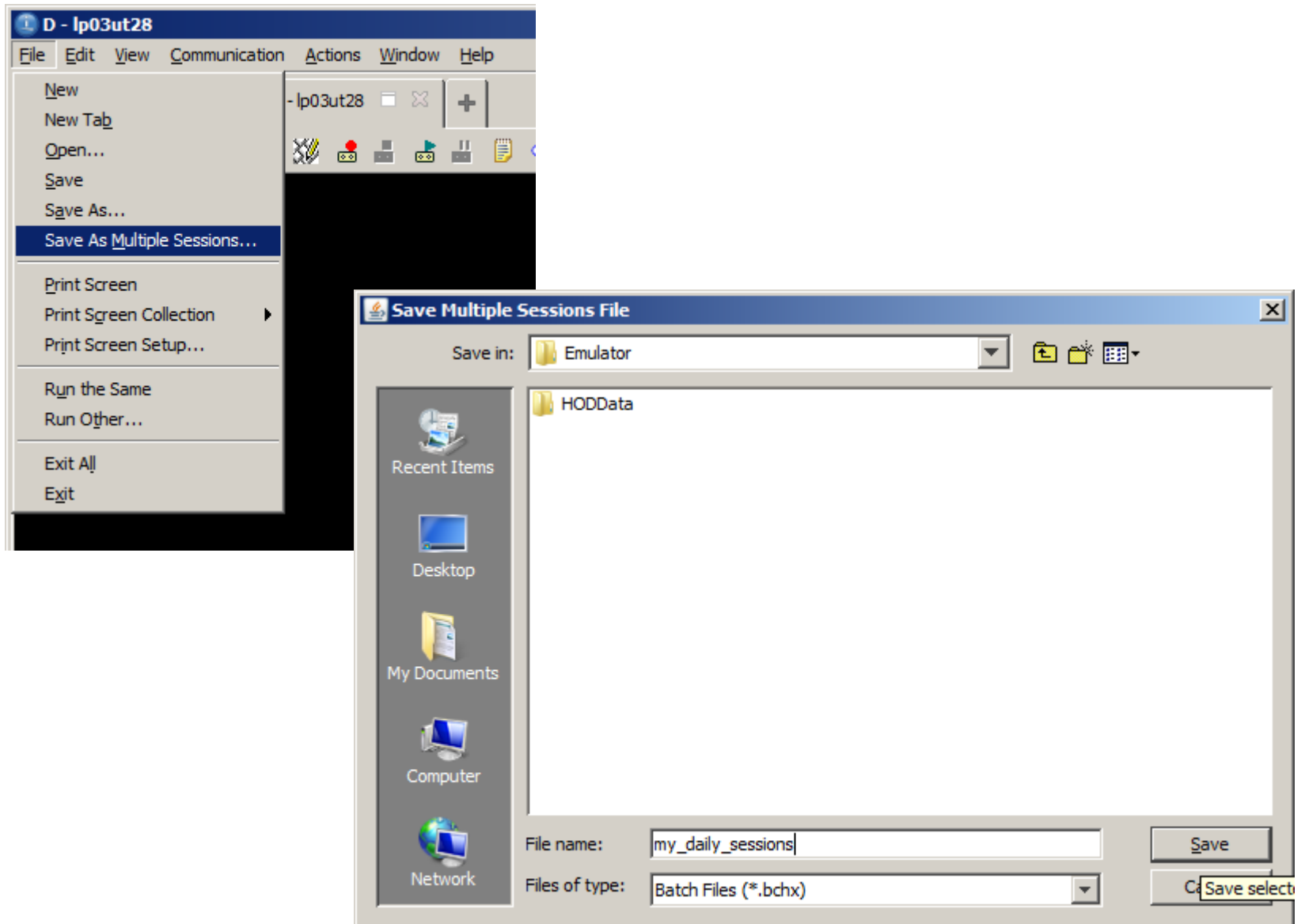
Window D (Bottom): Titled "D - lp03ut28". It shows the "IBM i Main Menu" with the system ID "System: LP03UT28". The menu options are:

1. User tasks
2. Office tasks
3. General system tasks
4. Files, libraries, and folders
5. Programming
6. Communications
7. Define or change the system
8. Problem handling
9. Display a menu
10. Information Assistant options
11. IBM i Access tasks
90. Sign off

 The prompt "Selection or command ==>" is at the bottom. The status bar shows "MA + B" and "06/053".

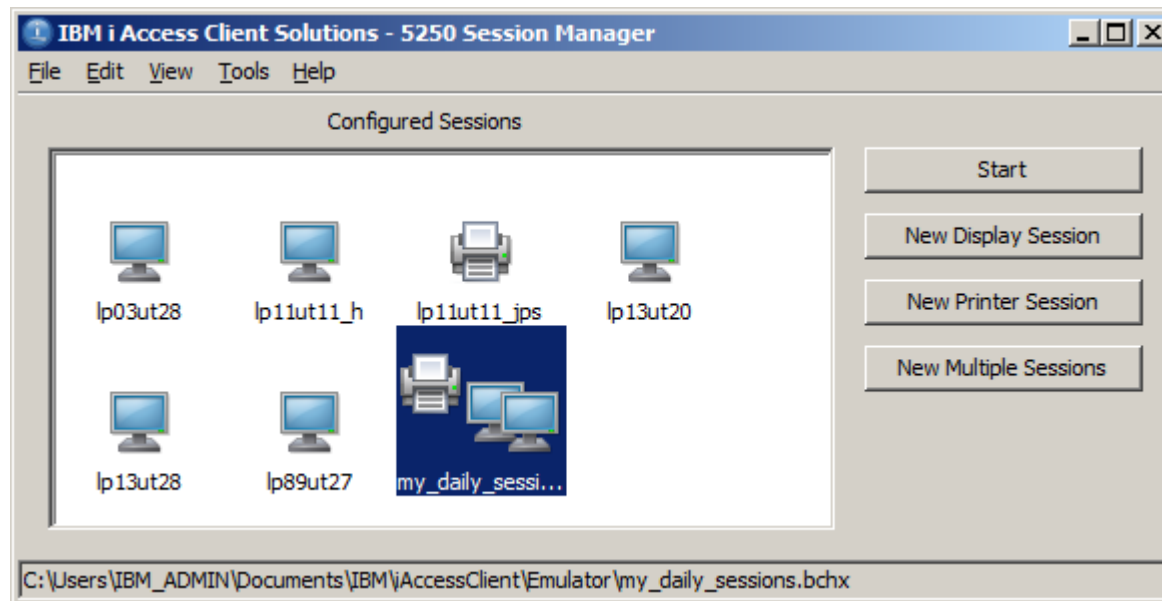
The bottom of the image shows a Windows taskbar with various application icons and a system clock indicating 10:34 AM on 4/2/2015.

Enhanced batch files



Enhanced batch files

- "Multiple sessions" types shows up in my 5250 session manager (just like with PC5250)



Anyone keeping score?



**Don't worry...
We're not done
yet!**

How about SSL?

- Show of hands:
 - Who uses SSL more often than unsecured connections?
 - Whose company enforces an SSL-only policy for IBM i?



Configuring SSL CA trust – The PC5250 way!

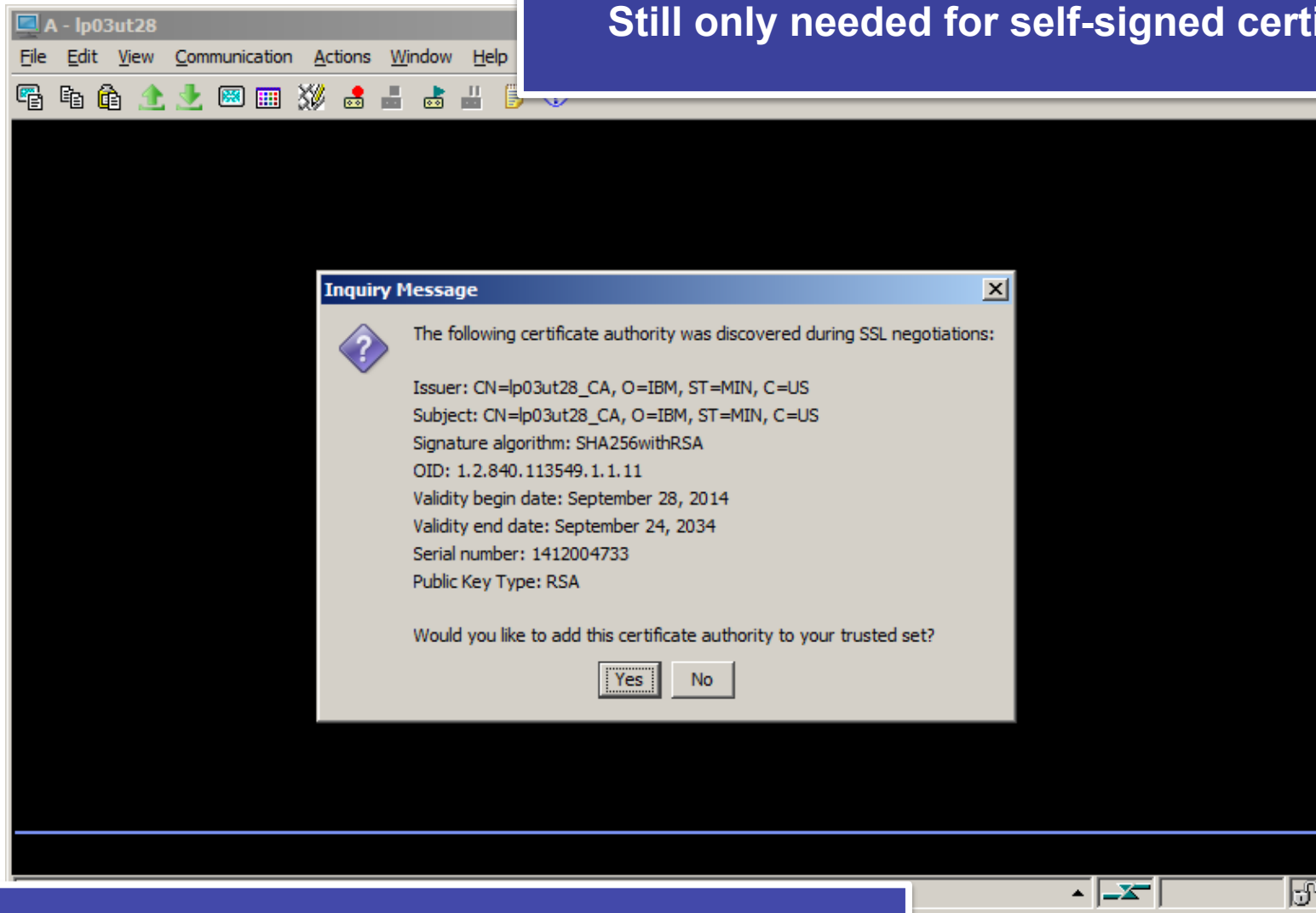
1. Open System i Navigator.
2. Right-click the name of your system.
3. Select Properties.
4. Select the Secure Sockets tab.
5. Click Download. This downloads the i5/OS certificate authority certificate automatically into the certificate key database.
6. You are prompted for your key database password. Unless you have previously changed the password from the default, enter ca400. A confirmation message displays. Click OK.

Relies on

- Non-SSL connection to IBM i IFS
- Certificate authority file in IFS matching what the server offers
- Not assigning multiple certificates on the server (new function in 7.2)

Configuring SSL CA trust – The ACS way!

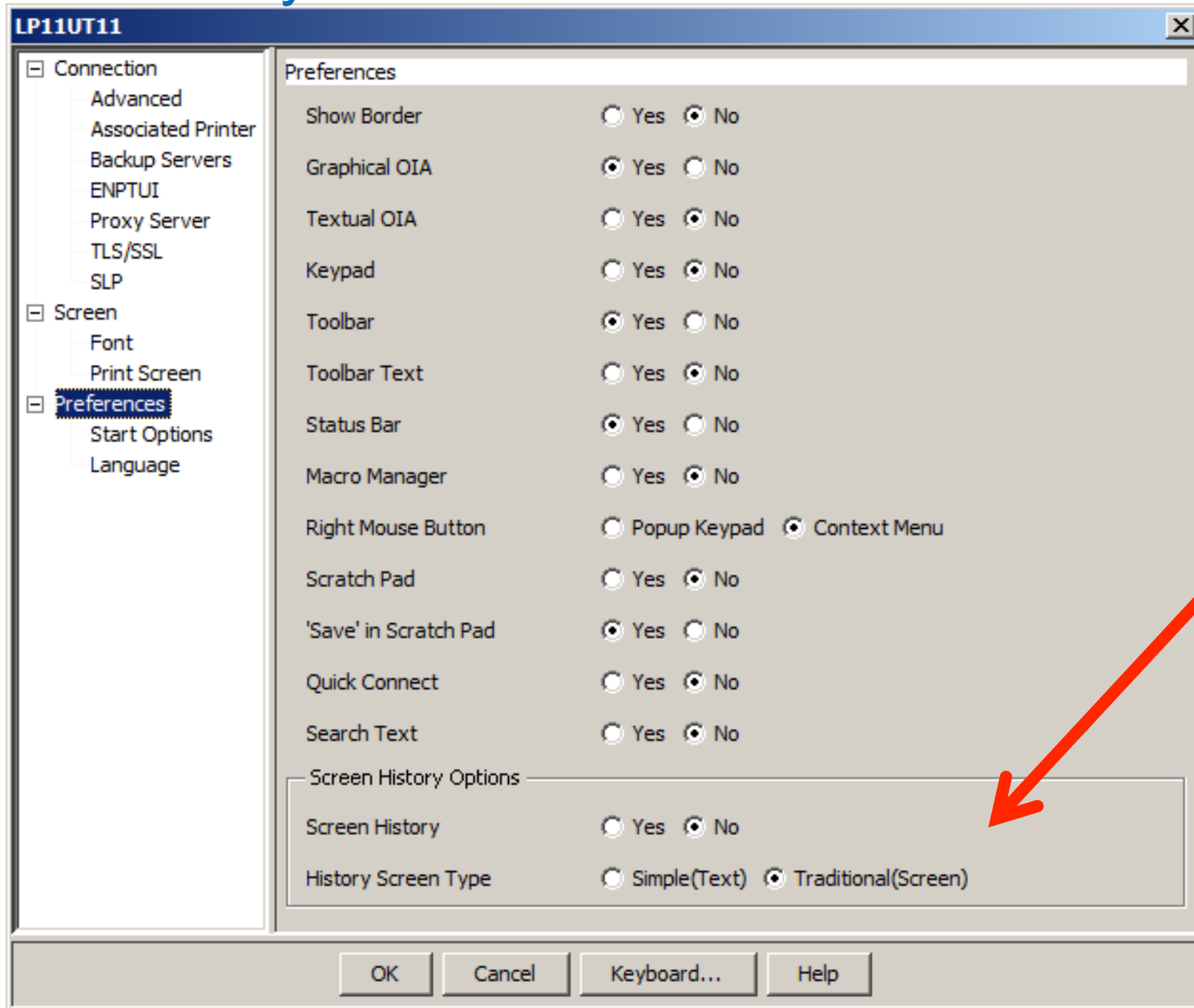
Still only needed for self-signed certificates



Relies on:

- Clicking "Yes"

Screen History



The screenshot shows the 'LP11UT11' Preferences dialog box. The left-hand tree view has 'Preferences' selected. The main area contains the following settings:

Setting	Yes	No
Show Border	<input type="radio"/>	<input checked="" type="radio"/>
Graphical OIA	<input checked="" type="radio"/>	<input type="radio"/>
Textual OIA	<input type="radio"/>	<input checked="" type="radio"/>
Keypad	<input type="radio"/>	<input checked="" type="radio"/>
Toolbar	<input checked="" type="radio"/>	<input type="radio"/>
Toolbar Text	<input type="radio"/>	<input checked="" type="radio"/>
Status Bar	<input checked="" type="radio"/>	<input type="radio"/>
Macro Manager	<input type="radio"/>	<input checked="" type="radio"/>
Right Mouse Button	<input type="radio"/>	<input checked="" type="radio"/>
Scratch Pad	<input type="radio"/>	<input checked="" type="radio"/>
'Save' in Scratch Pad	<input checked="" type="radio"/>	<input type="radio"/>
Quick Connect	<input type="radio"/>	<input checked="" type="radio"/>
Search Text	<input type="radio"/>	<input checked="" type="radio"/>
Screen History Options		
Screen History	<input type="radio"/>	<input checked="" type="radio"/>
History Screen Type	<input type="radio"/>	<input checked="" type="radio"/>

Buttons at the bottom: OK, Cancel, Keyboard..., Help

A - lp03ut28 [Window icons]

File Edit View Communication Actions Window Help

Work with Output Queue

Queue: QPRINT Library: QGPL Status: RLS

Type options, press Enter.

1=Send 2=Change 3=Hold 4=Delete 5=Display 6=Release 7=Messages
8=Attributes 9=Work with printing status

Opt	File	User	User Data	Sts	Pages	Copies	Form	Type	Pty
—	QSYSPRT	QSECOFR	CHGLICINF	RDY	1	1	*STD		5
—	QPDSJOB	QSYS		RDY	9	1	*STD		5
—	QPRINT	QSYS		RDY	1	1	*STD		5
—	QPDSPLIB	DHQB		RDY	1	1	*STD		5
—	QPRINT	QSYS		RDY	1	1	*STD		5
—	QPDSPLIB	DHQB		RDY	1	1	*STD		5
—	COMPPGM	DHQB		RDY	3	1	*STD		5
—	QPRINT	QSYS		RDY	1	1	*STD		5
—	REQUESTROL	QSECOFR	SQL	RDY	34	1	*STD		5

More...

Parameters for options 1, 2, 3 or command
==>

F3=Exit F11=View 2 F12=Cancel F20=Writers F22=Printers
F24=More keys

MA + A 17/041

Screen History Board

lp03ut28:992 [Lock icon] [Help icon]



A - lp03ut28

File Edit View Communication Actions Window Help

Work with Output Queue

Queue: QPRINT Library: QGPL Status: RLS

Type options, press Enter.

1=Send 2=Change 3=Hold 4>Delete 5=Display 6=Release 7=Messages
8=Attributes 9=Work with printing status

Opt	File	User	User Data	Sts	Pages	Copies	Form	Type	Pty
—	QSYSPRT	QSECOFR	CHGLICINF	RDY	1	1	*STD		5
—	QPDSPJOB	QSYS		RDY	9	1	*STD		5
—	QPRINT	QSYS		RDY	1	1	*STD		5
—	QPDSPLIB	DHQB		RDY	1	1	*STD		5
—	QPRINT	QSYS		RDY	1	1	*STD		5
—	QPDSPLIB	DHQB		RDY	1	1	*STD		5
—	COMPPGM	DHQB		RDY	3	1	*STD		5
—	QPRINT	QSYS		RDY	1	1	*STD		5
—	REQUESTROL	QSECOFR	SQL	RDY	34	1	*STD		5

More...

Parameters for options 1, 2, 3 or command
===>

F3=Exit F11=View 2 F12=Cancel F20=Writers F22=Printers
F24=More keys

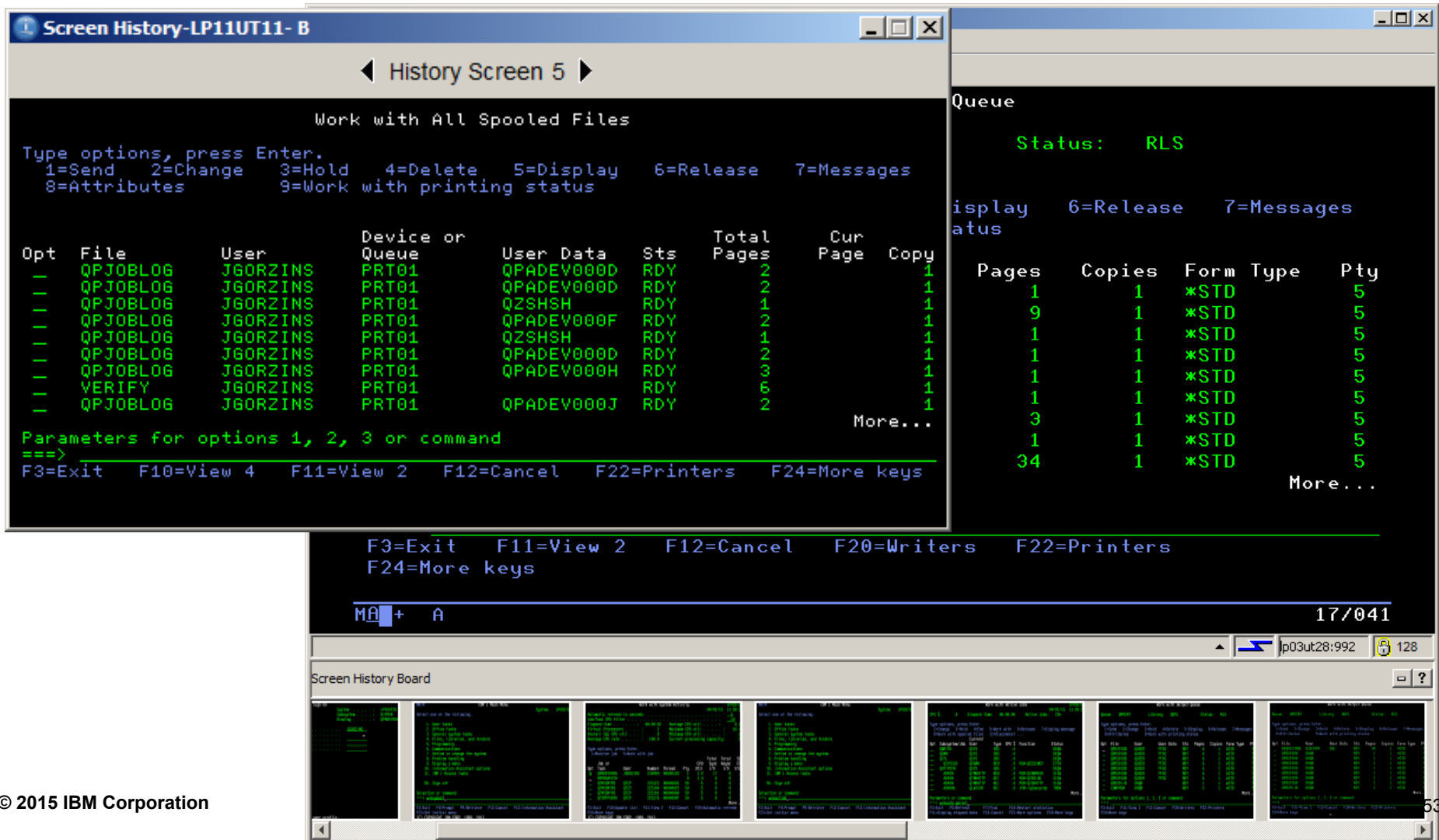
MA + A 17/041

p03ut28:992 128

Screen History Board

History Screen

- When clicked on a thumbnail, a new window would pop-up showing the contents of the navigated screen (history screen)
- One can also navigate the other history screens (if any) from a history screen, by using the next and previous button on it



Screen History-LP11UT11- B

◀ History Screen 5 ▶

Work with All Spooled Files

Type options, press Enter.
 1=Send 2=Change 3=Hold 4=Delete 5=Display 6=Release 7=Messages
 8=Attributes 9=Work with printing status

Opt	File	User	Device or Queue	User Data	Sts	Total Pages	Cur Page	Copy
—	QPJOBLOG	JGORZINS	PRT01	QPADEV000D	RDY	2		1
—	QPJOBLOG	JGORZINS	PRT01	QPADEV000D	RDY	2		1
—	QPJOBLOG	JGORZINS	PRT01	QZSHSH	RDY	1		1
—	QPJOBLOG	JGORZINS	PRT01	QPADEV000F	RDY	2		1
—	QPJOBLOG	JGORZINS	PRT01	QZSHSH	RDY	1		1
—	QPJOBLOG	JGORZINS	PRT01	QPADEV000D	RDY	2		1
—	QPJOBLOG	JGORZINS	PRT01	QPADEV000H	RDY	3		1
—	VERIFY	JGORZINS	PRT01		RDY	6		1
—	QPJOBLOG	JGORZINS	PRT01	QPADEV000J	RDY	2		1

Parameters for options 1, 2, 3 or command
 ===>

F3=Exit F10=View 4 F11=View 2 F12=Cancel F22=Printers F24=More keys

Queue

Status: RLS

Display 6=Release 7=Messages

Pages	Copies	Form	Type	Pty
1	1	*STD		5
9	1	*STD		5
1	1	*STD		5
1	1	*STD		5
1	1	*STD		5
1	1	*STD		5
3	1	*STD		5
1	1	*STD		5
34	1	*STD		5

More...

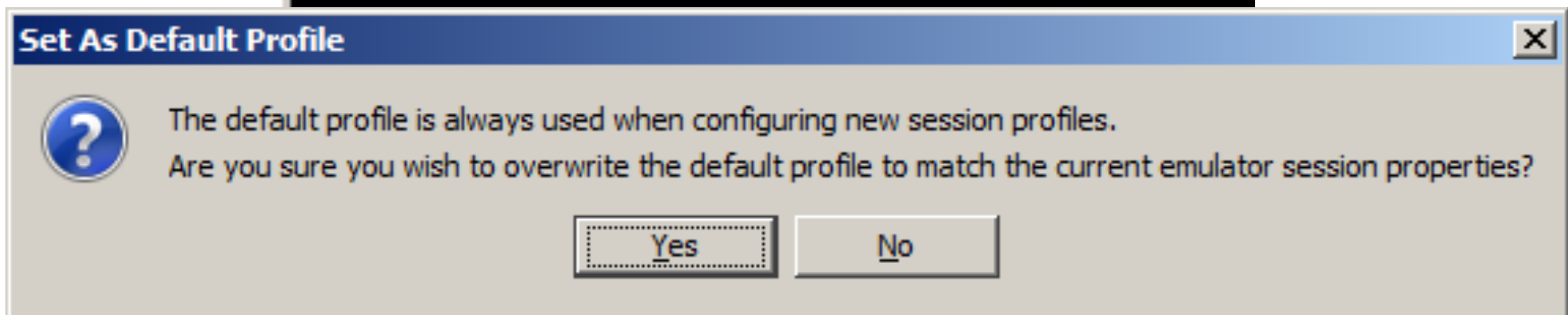
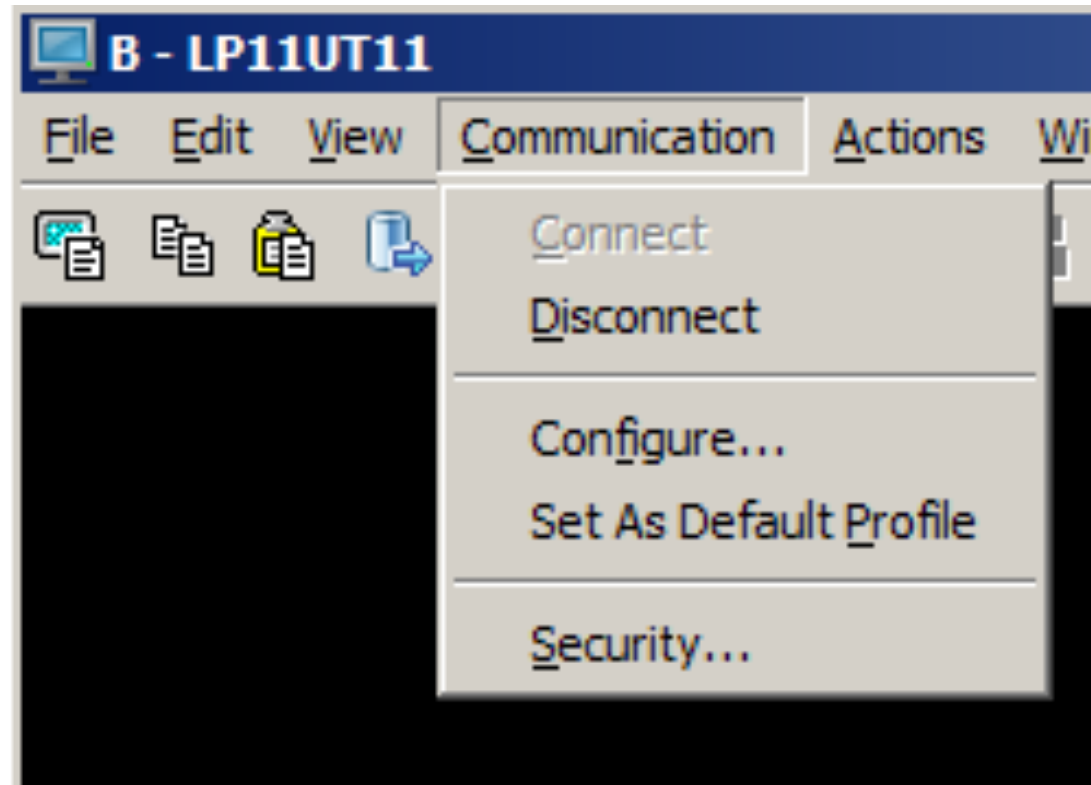
F3=Exit F11=View 2 F12=Cancel F20=Writers F22=Printers F24=More keys

MA + A 17/041

p03ut28:992 128

Screen History Board

Default Profile

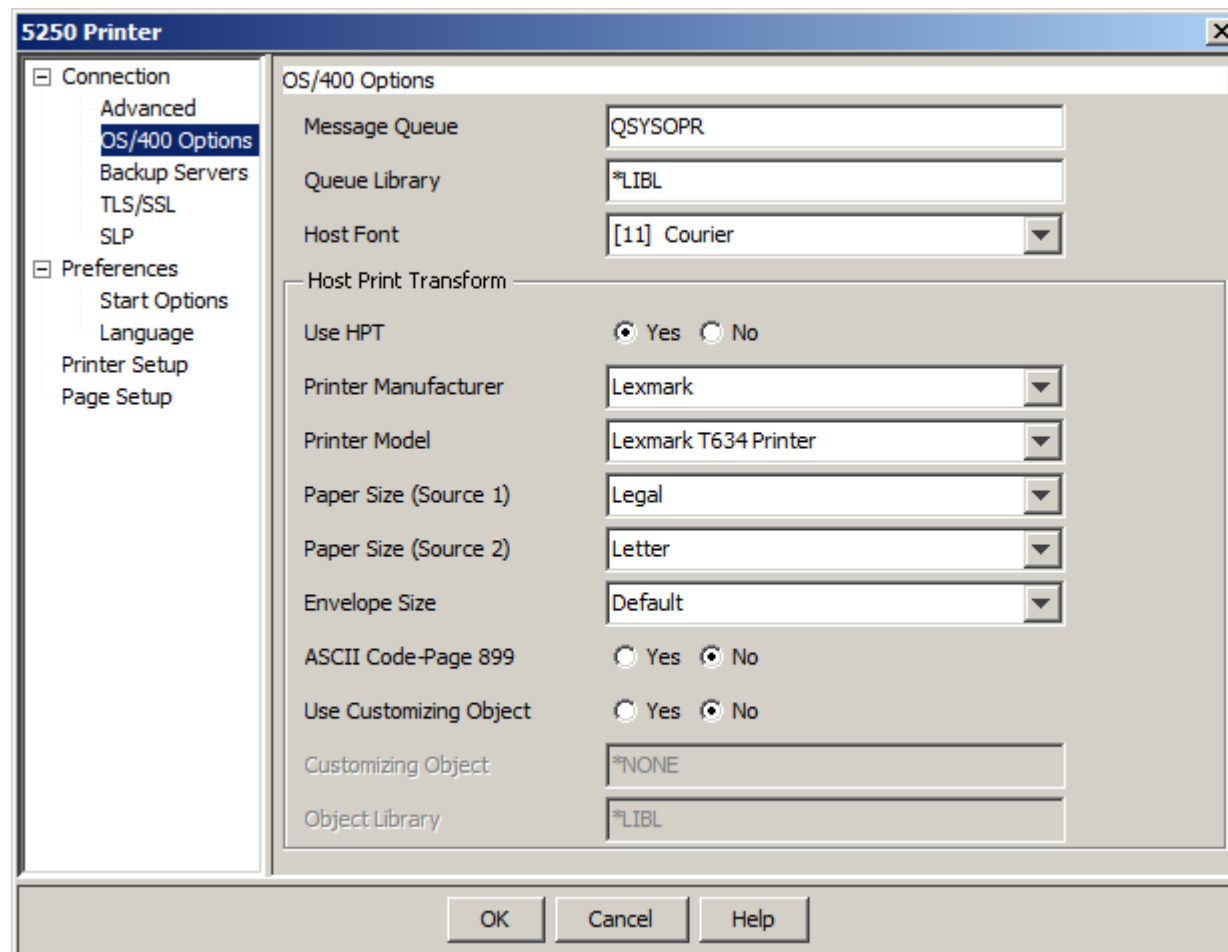


Default Profile

- Your current preferences will now be set as the default settings for all new 5250 sessions you create!
- This includes (but is not limited to)
 - Key mappings
 - Color mappings
 - Watermark settings
 - Screen history
 - SSL setting
 - Bypass signon
 - Screen Size (27x132)

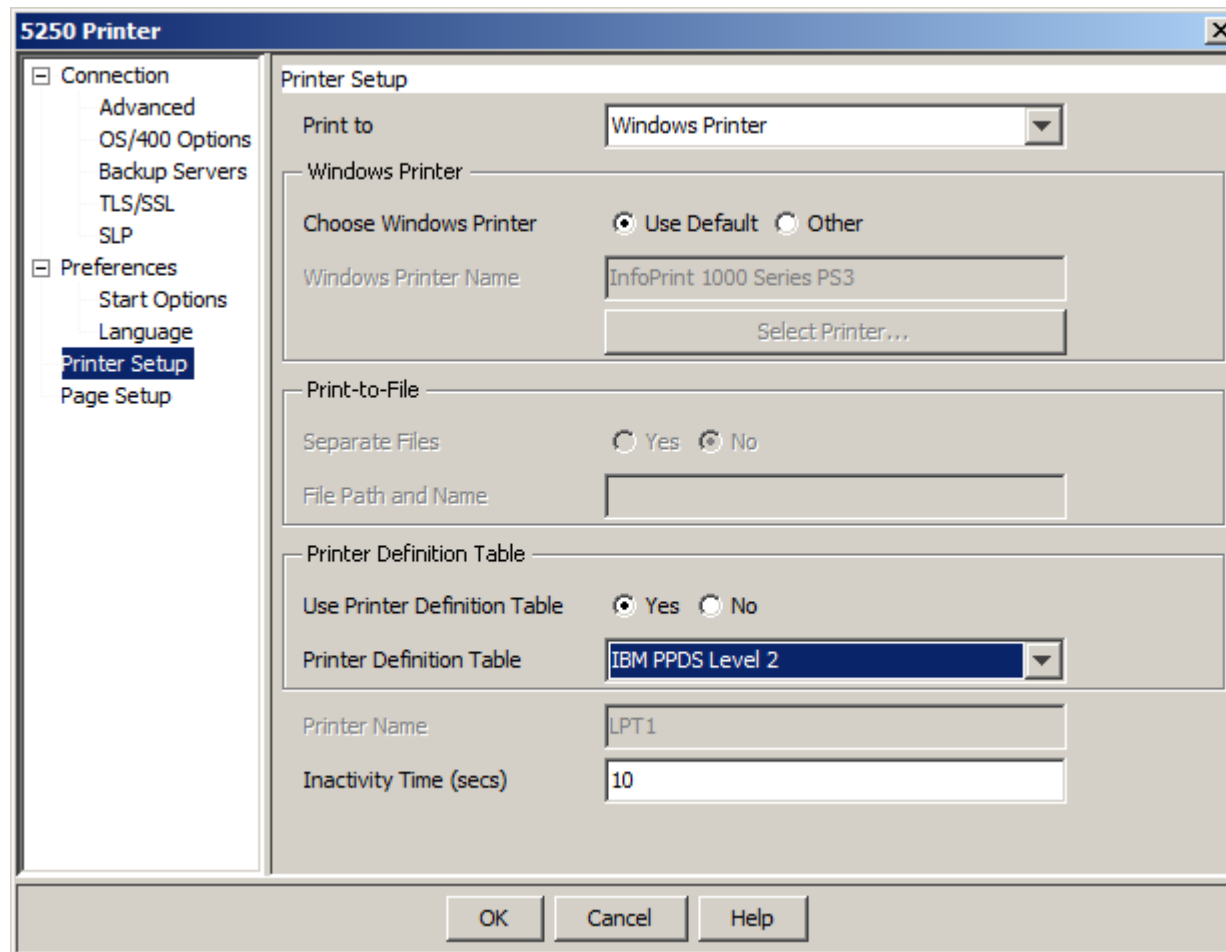
Print Support

- ACS supports Host Print Transform (HPT)

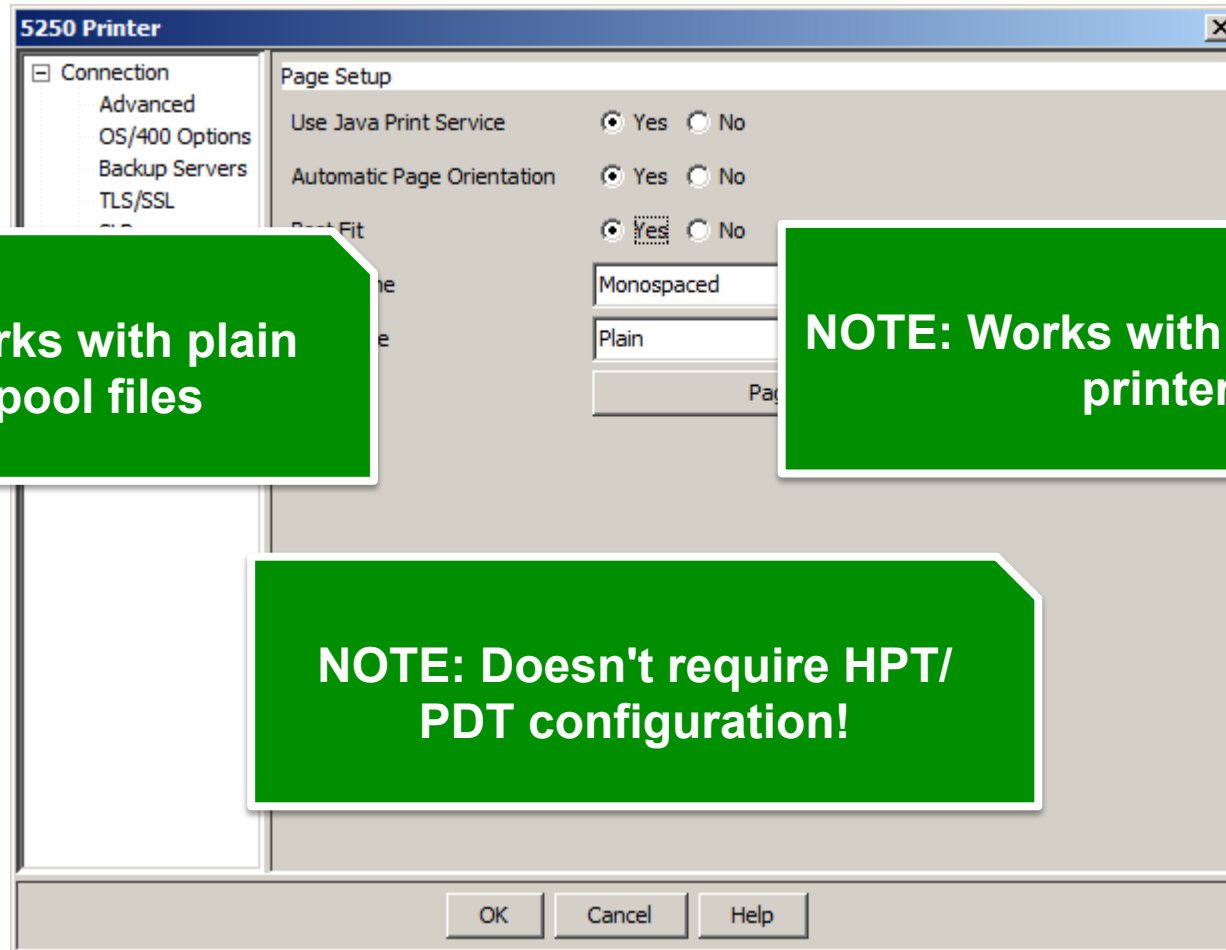


Print Support

- ACS supports Printer Definition Tables (PDT)



New Java printing option

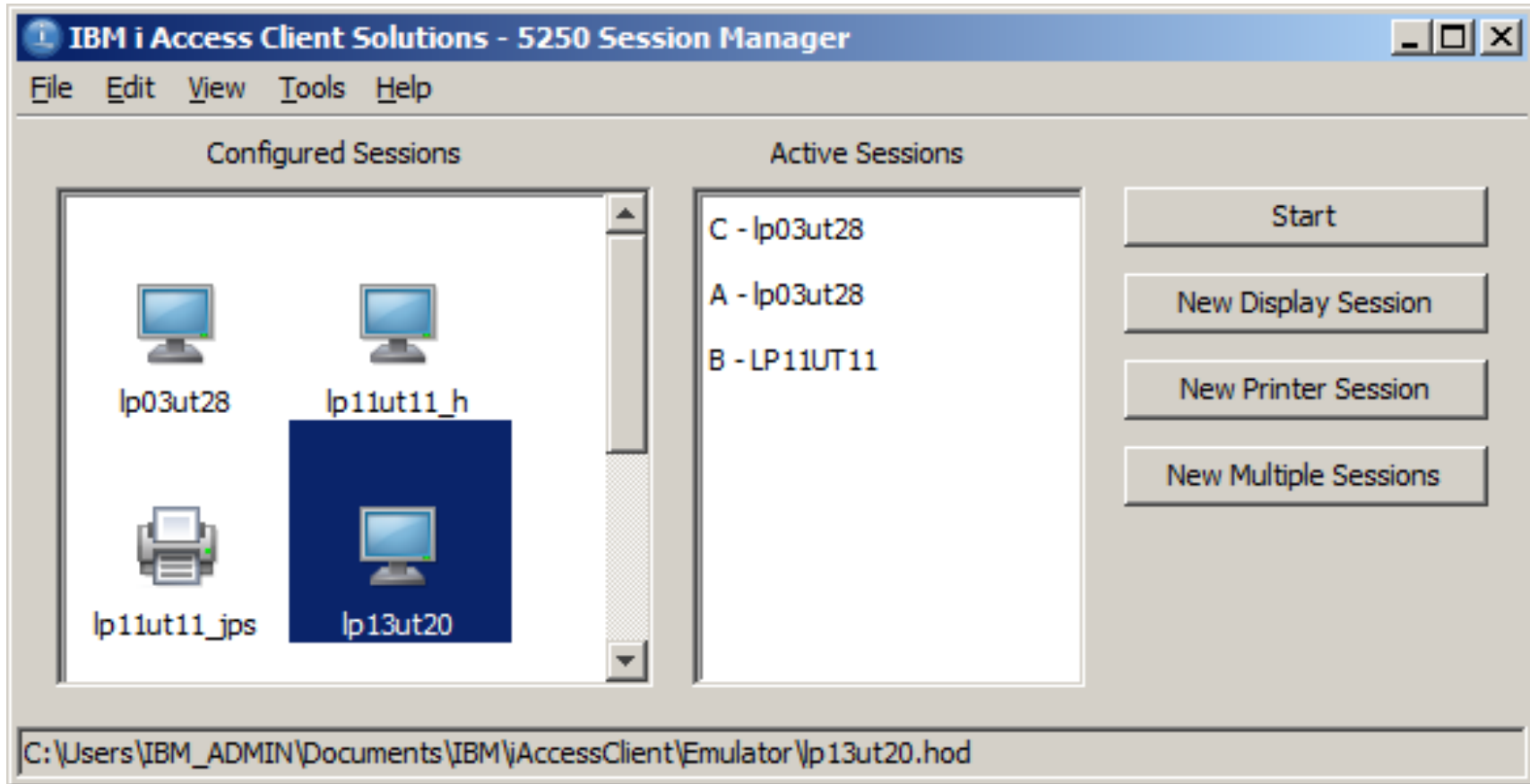


NOTE: Only works with plain text *SCS spool files

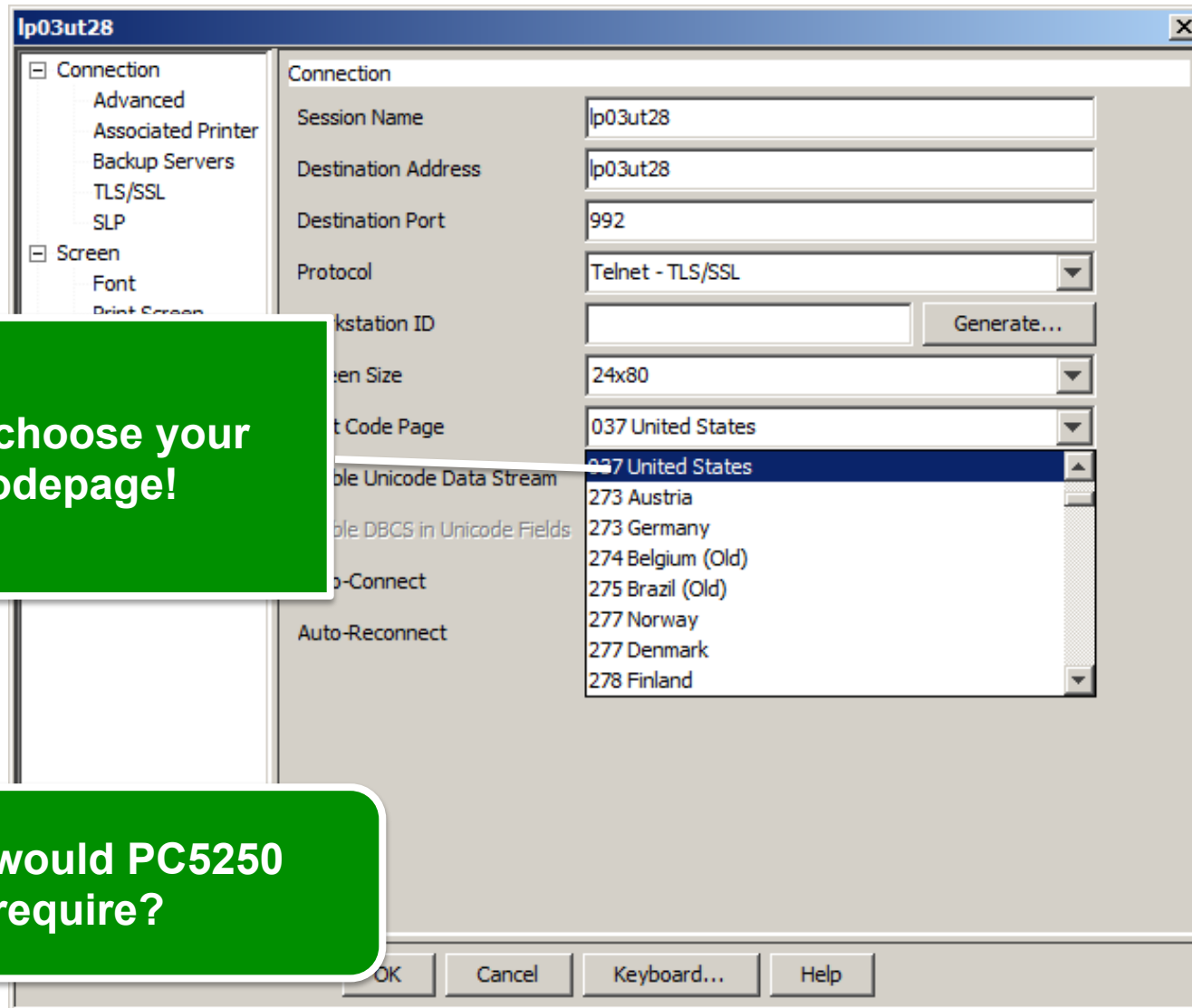
NOTE: Works with any installed printer!

NOTE: Doesn't require HPT/PDT configuration!

Session Manager "active sessions"



Better globalization support



Just choose your codepage!

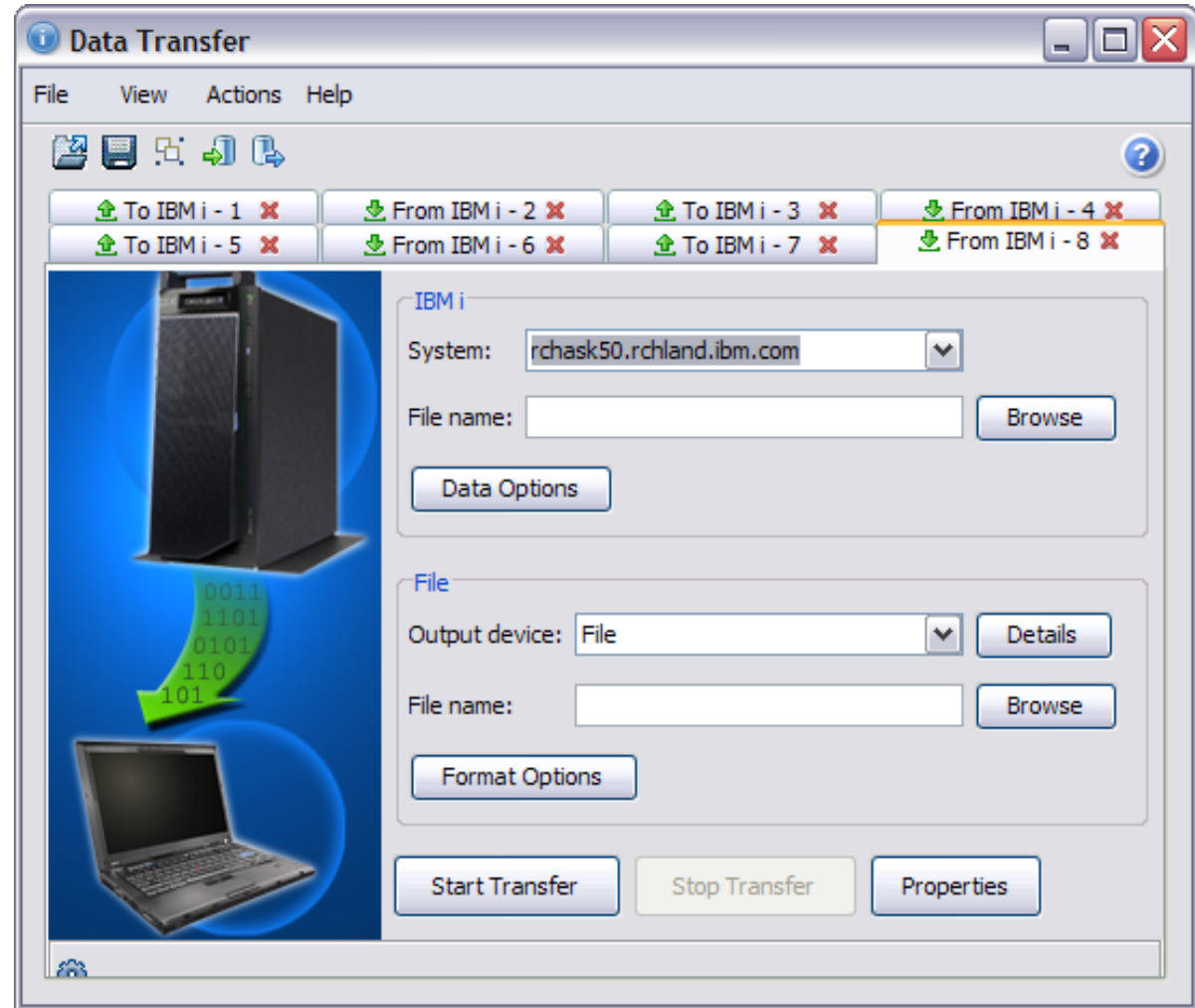
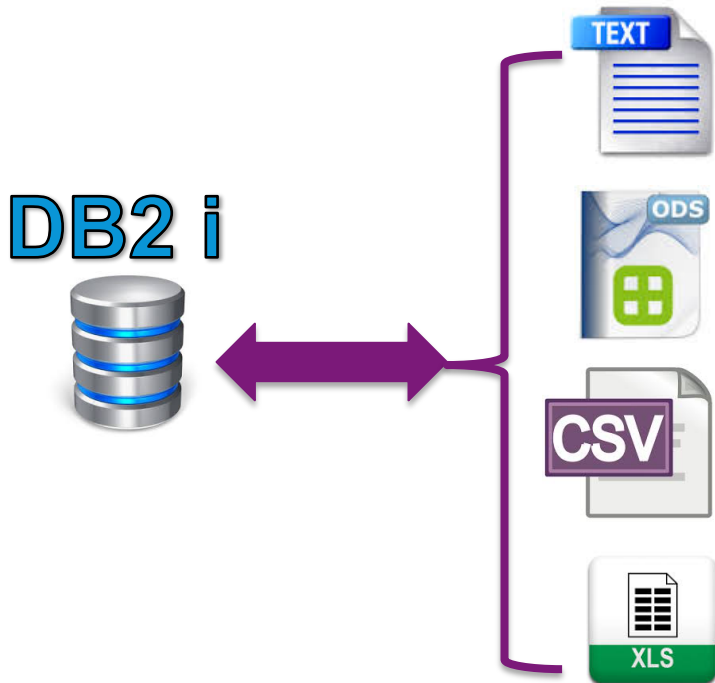
What would PC5250 require?

Beyond the emulator

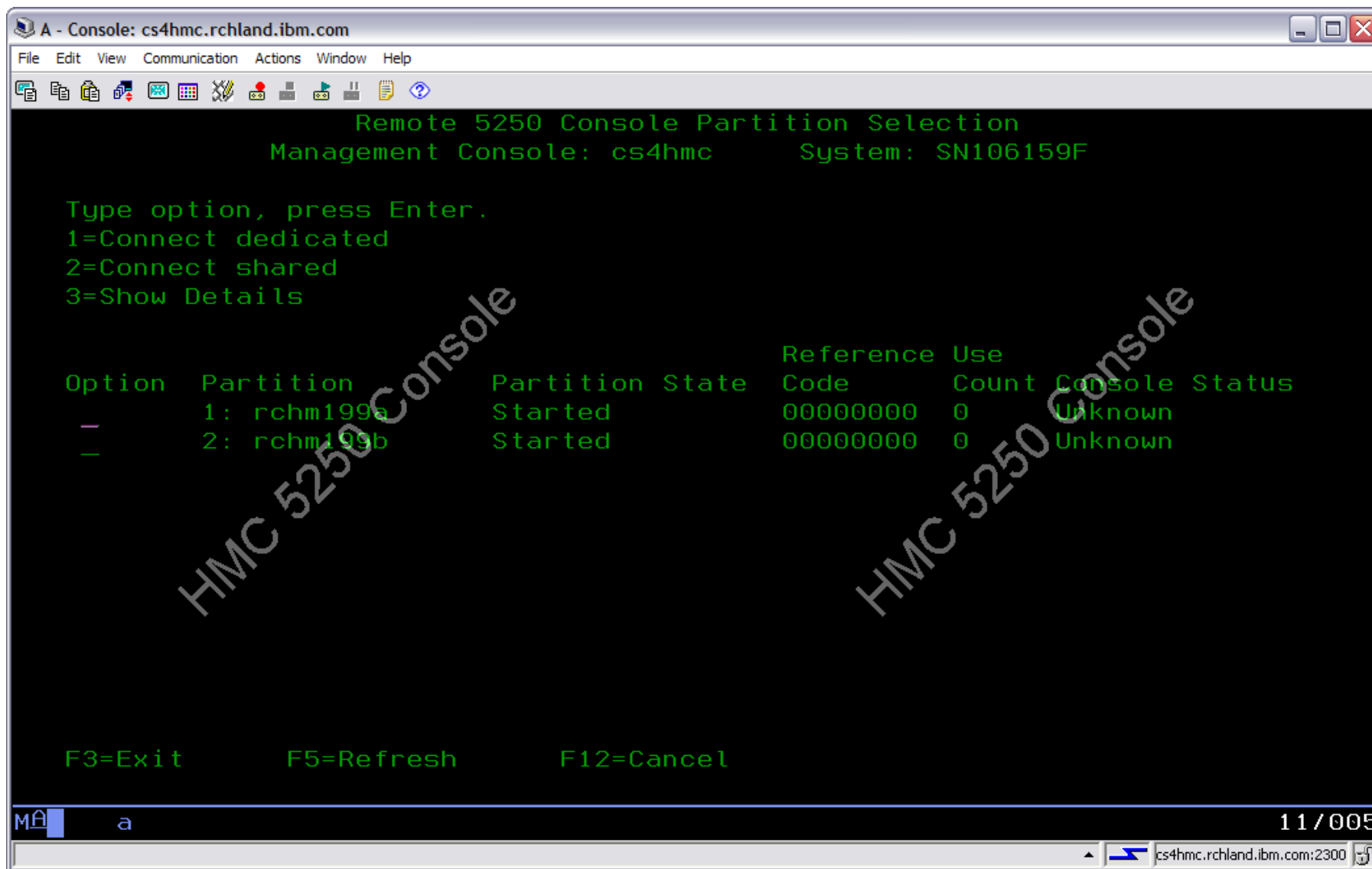


Data Transfer

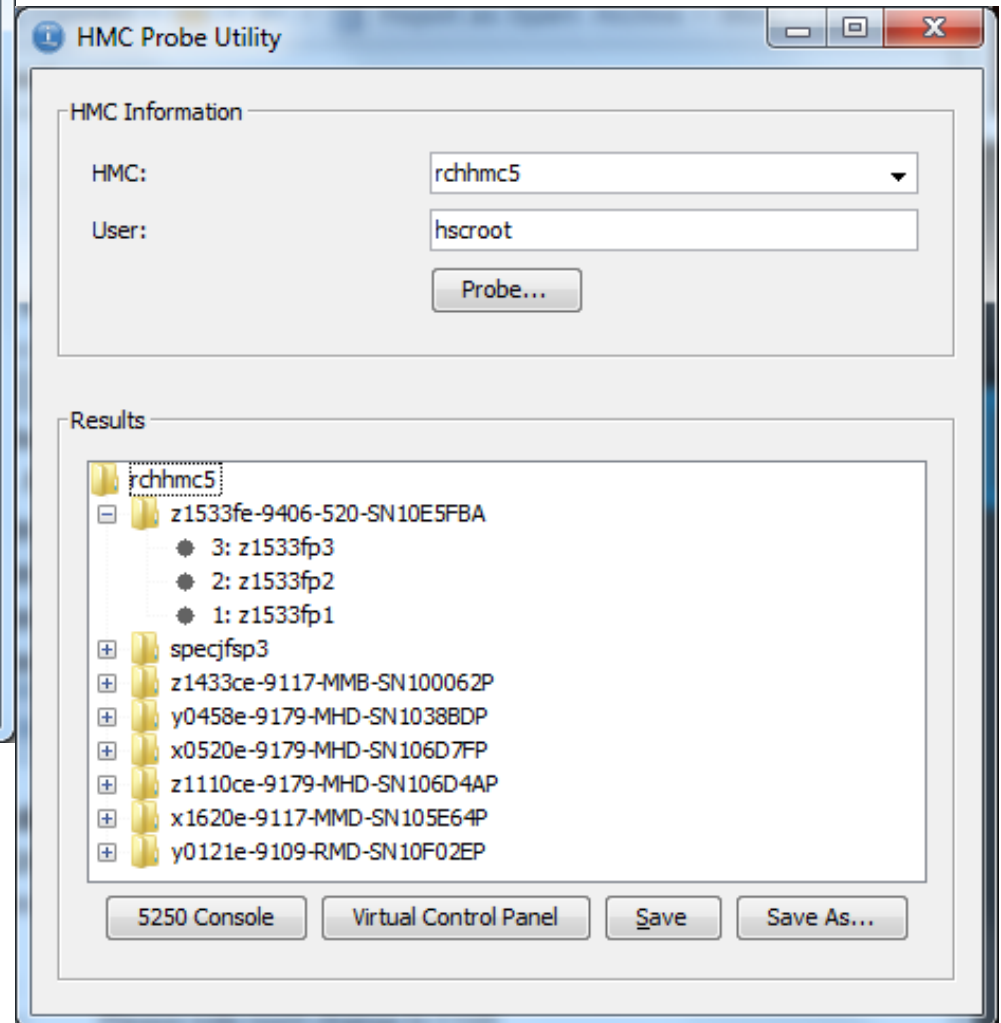
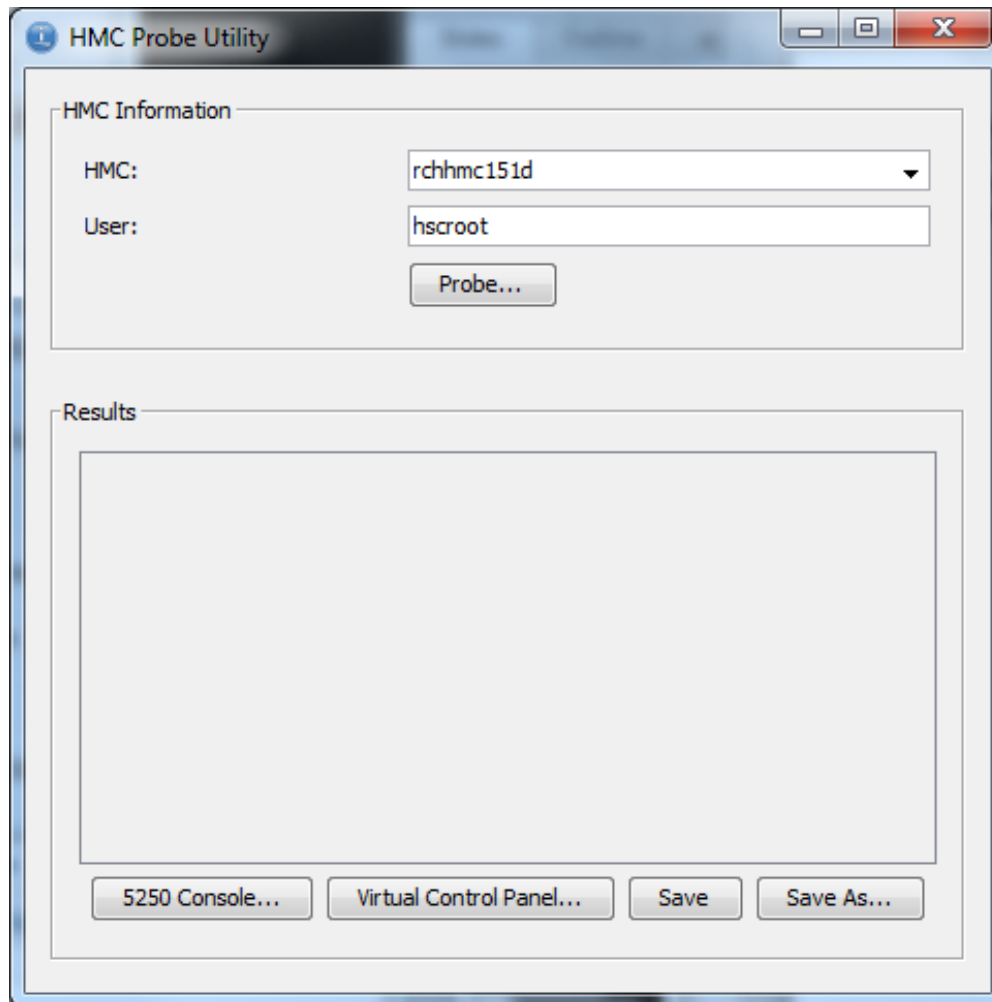
- Data Transfer interaction panel
 - All active Data Transfer requests are displayed in a tab on this panel
 - Open Saved Requests
 - Save Requests
 - Create IBM i Files
 - Data Transfer Migration



5250 Console

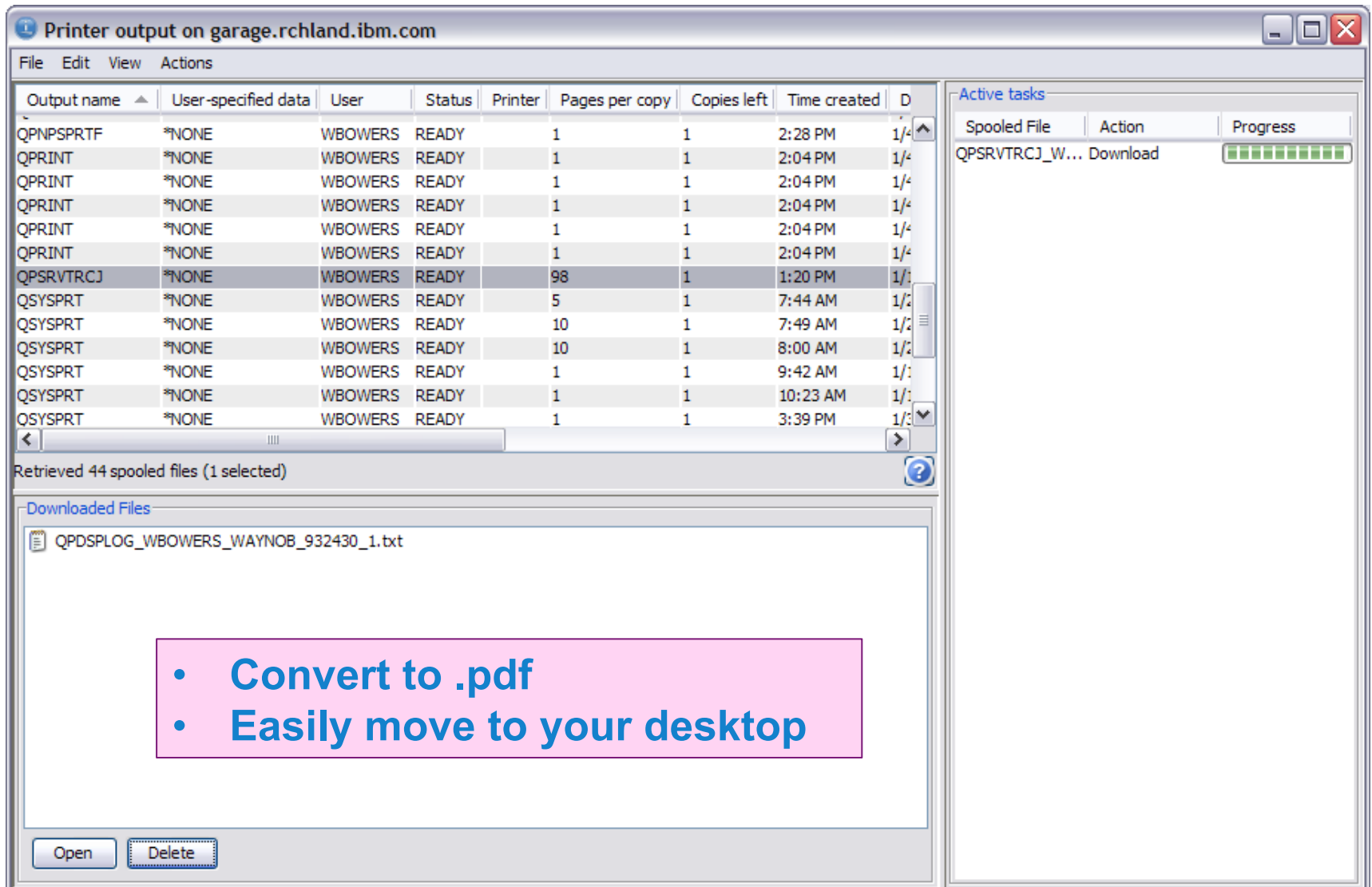


HMC Console Probe



Printer Output

- Printer Output user interface
 - Allows the user to view, and download spooled files.



Printer output on garage.rchland.ibm.com

File Edit View Actions

Output name	User-specified data	User	Status	Printer	Pages per copy	Copies left	Time created	D
QPNPSRPTF	*NONE	WBOWERS	READY		1	1	2:28 PM	1/2
QPRINT	*NONE	WBOWERS	READY		1	1	2:04 PM	1/2
QPRINT	*NONE	WBOWERS	READY		1	1	2:04 PM	1/2
QPRINT	*NONE	WBOWERS	READY		1	1	2:04 PM	1/2
QPRINT	*NONE	WBOWERS	READY		1	1	2:04 PM	1/2
QPSRVTRCJ	*NONE	WBOWERS	READY		98	1	1:20 PM	1/1
QSYSRPT	*NONE	WBOWERS	READY		5	1	7:44 AM	1/2
QSYSRPT	*NONE	WBOWERS	READY		10	1	7:49 AM	1/2
QSYSRPT	*NONE	WBOWERS	READY		10	1	8:00 AM	1/2
QSYSRPT	*NONE	WBOWERS	READY		1	1	9:42 AM	1/1
QSYSRPT	*NONE	WBOWERS	READY		1	1	10:23 AM	1/1
QSYSRPT	*NONE	WBOWERS	READY		1	1	3:39 PM	1/1

Retrieved 44 spooled files (1 selected)

Downloaded Files

QPDSPLUG_WBOWERS_WAYNOB_932430_1.txt

- Convert to .pdf
- Easily move to your desktop

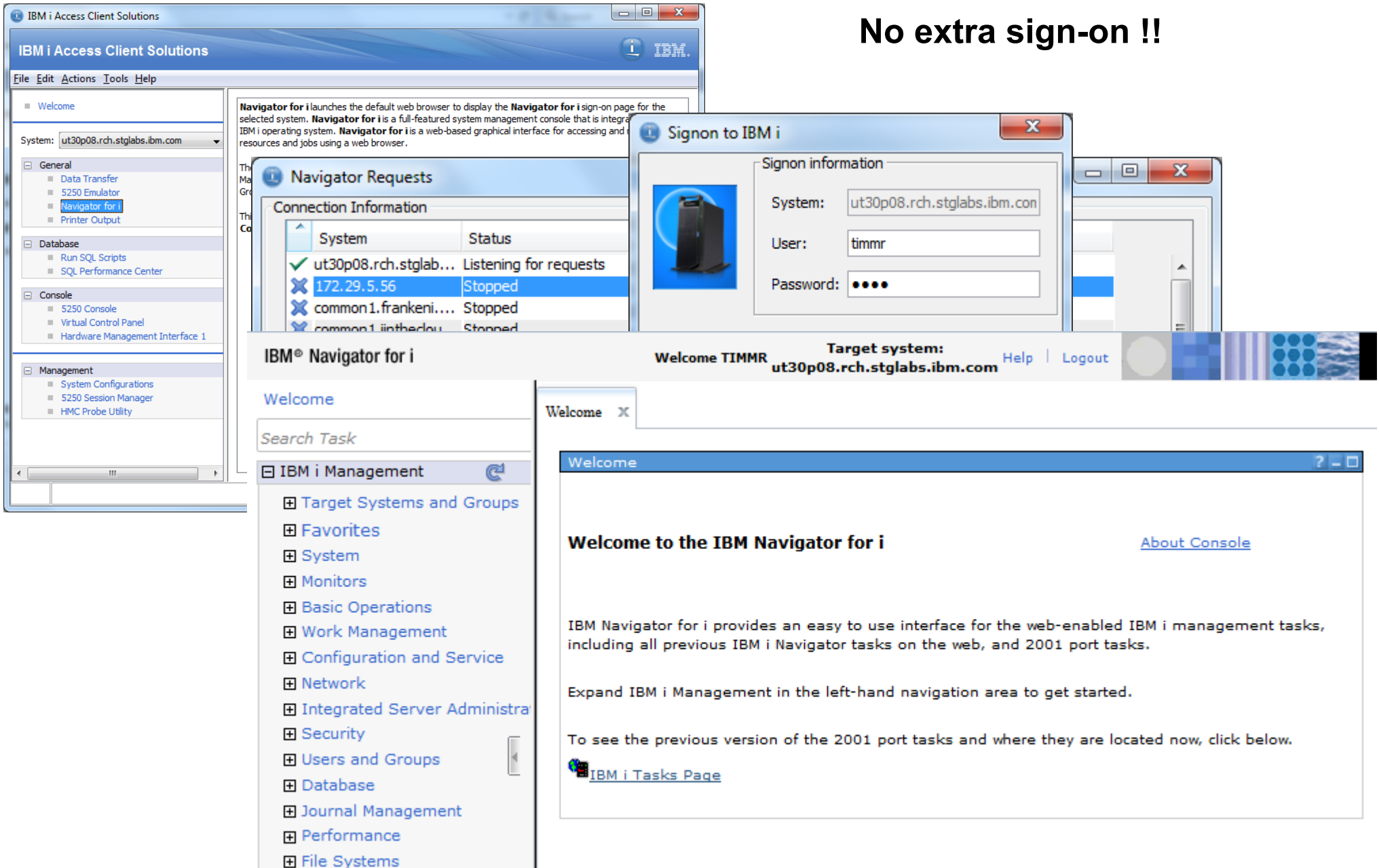
Open Delete

Active tasks

Spooled File	Action	Progress
QPSRVTRCJ_W...	Download	<div style="width: 100%; height: 10px; background-color: green;"></div>

ACS & Navigator

No extra sign-on !!



The screenshot illustrates the workflow of the IBM i Access Client Solutions (ACS) interface. On the left, the 'IBM i Access Client Solutions' window shows a sidebar with categories like General, Database, Console, and Management. The 'General' section is expanded, showing 'Data Transfer', '5250 Emulator', 'Navigator for i', and 'Printer Output'. The 'System' dropdown is set to 'ut30p08.rch.stglabs.ibm.com'. In the center, the 'Navigator Requests' window displays a table of connection information:

System	Status
ut30p08.rch.stglab...	Listening for requests
172.29.5.56	Stopped
common1.frankenl...	Stopped
common1.iinthead...	Stopped

Overlaid on this is a 'Signon to IBM i' dialog box with the following fields:

- System: ut30p08.rch.stglabs.ibm.com
- User: timmr
- Password: [masked]

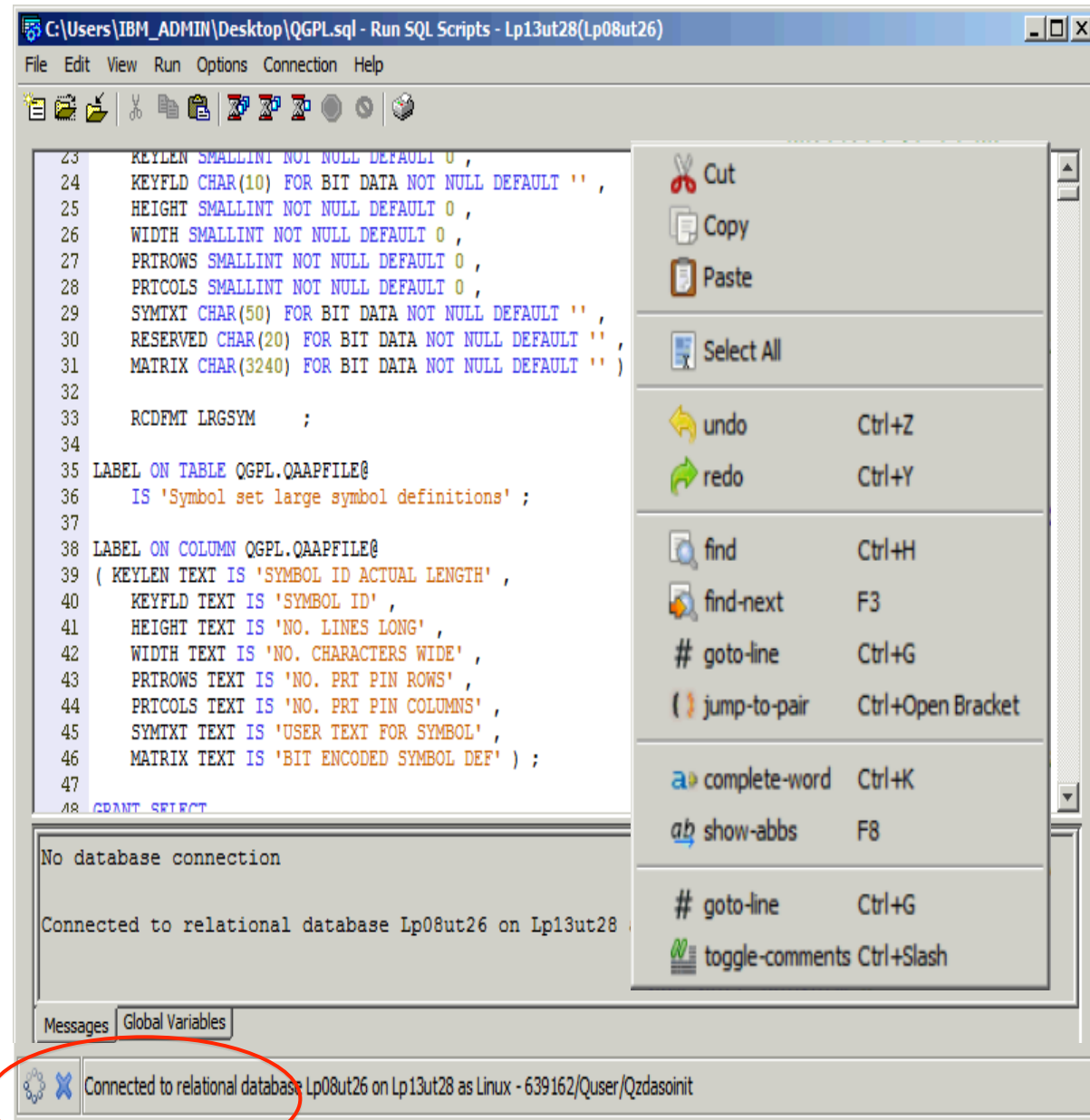
At the bottom, the 'IBM® Navigator for i' console is shown. The header includes 'Welcome TIMMR' and 'Target system: ut30p08.rch.stglabs.ibm.com'. The main content area displays a 'Welcome to the IBM Navigator for i' message with an 'About Console' link. Below the message, it states: 'IBM Navigator for i provides an easy to use interface for the web-enabled IBM i management tasks, including all previous IBM i Navigator tasks on the web, and 2001 port tasks. Expand IBM i Management in the left-hand navigation area to get started. To see the previous version of the 2001 port tasks and where they are located now, click below.' A link for 'IBM i Tasks Page' is provided.

Work with Your Data

Works on Windows, Mac & Linux!!!

Run SQL Scripts

- Faster Startup Time
- Line Numbers
- Highlighting
- Color Coding
- Improved Usability
- Status Bar
- Stop Runaway Queries
- Find (supports Regex)
- Lots of Editor features
- Save Results .xlsx



How do you get the product....

- Product Web Site
 - <http://www-03.ibm.com/systems/power/software/i/access/solutions.html>
- Used to have to go to ESS
- No longer, down load from Product Web Page.



Summary

The ACS emulator is better than PC5250!!

Any Questions?



This document was developed for IBM offerings in the United States as of the date of publication. IBM may not make these offerings available in other countries, and the information is subject to change without notice. Consult your local IBM business contact for information on the IBM offerings available in your area.

Information in this document concerning non-IBM products was obtained from the suppliers of these products or other public sources.

Questions on the capabilities of non-IBM products should be addressed to the suppliers of those products.

IBM may have patents or pending patent applications covering subject matter in this document. The furnishing of this document does not give you any license to these patents. Send license inquires, in writing, to IBM Director of Licensing, IBM Corporation, New Castle Drive, Armonk, NY 10504-1785 USA.

All statements regarding IBM future direction and intent are subject to change or withdrawal without notice, and represent goals and objectives only.

The information contained in this document has not been submitted to any formal IBM test and is provided "AS IS" with no warranties or guarantees either expressed or implied.

All examples cited or described in this document are presented as illustrations of the manner in which some IBM products can be used and the results that may be achieved. Actual environmental costs and performance characteristics will vary depending on individual client configurations and conditions.

IBM Global Financing offerings are provided through IBM Credit Corporation in the United States and other IBM subsidiaries and divisions worldwide to qualified commercial and government clients. Rates are based on a client's credit rating, financing terms, offering type, equipment type and options, and may vary by country. Other restrictions may apply. Rates and offerings are subject to change, extension or withdrawal without notice.

IBM is not responsible for printing errors in this document that result in pricing or information inaccuracies.

All prices shown are IBM's United States suggested list prices and are subject to change without notice; reseller prices may vary.

IBM hardware products are manufactured from new parts, or new and serviceable used parts. Regardless, our warranty terms apply.

Any performance data contained in this document was determined in a controlled environment. Actual results may vary significantly and are dependent on many factors including system hardware configuration and software design and configuration. Some measurements quoted in this document may have been made on development-level systems. There is no guarantee these measurements will be the same on generally-available systems. Some measurements quoted in this document may have been estimated through extrapolation. Users of this document should verify the applicable data for their specific environment.

IBM, the IBM logo, ibm.com AIX, AIX (logo), AIX 6 (logo), AS/400, BladeCenter, Blue Gene, ClusterProven, DB2, ESCON, i5/OS, i5/OS (logo), IBM Business Partner (logo), IntelliStation, LoadLeveler, Lotus, Lotus Notes, Notes, Operating System/400, OS/400, PartnerLink, PartnerWorld, PowerPC, pSeries, Rational, RISC System/6000, RS/6000, THINK, Tivoli, Tivoli (logo), Tivoli Management Environment, WebSphere, xSeries, z/OS, zSeries, AIX 5L, Chiphopper, Chipkill, Cloudscape, DB2 Universal Database, DS4000, DS6000, DS8000, EnergyScale, Enterprise Workload Manager, General Purpose File System, GPFS, HACMP, HACMP/6000, HASM, IBM Systems Director Active Energy Manager, iSeries, Micro-Partitioning, POWER, PowerExecutive, PowerVM, PowerVM (logo), PowerHA, Power Architecture, Power Everywhere, Power Family, POWER Hypervisor, Power Systems, Power Systems (logo), Power Systems Software, Power Systems Software (logo), POWER2, POWER3, POWER4, POWER4+, POWER5, POWER5+, POWER6, POWER6+, System i, System p, System p5, System Storage, System z, Tivoli Enterprise, TME 10, Workload Partitions Manager and X-Architecture are trademarks or registered trademarks of International Business Machines Corporation in the United States, other countries, or both. If these and other IBM trademarked terms are marked on their first occurrence in this information with a trademark symbol (® or ™), these symbols indicate U.S. registered or common law trademarks owned by IBM at the time this information was published. Such trademarks may also be registered or common law trademarks in other countries. A current list of IBM trademarks is available on the Web at "Copyright and trademark information" at www.ibm.com/legal/copytrade.shtml

The Power Architecture and Power.org wordmarks and the Power and Power.org logos and related marks are trademarks and service marks licensed by Power.org. UNIX is a registered trademark of The Open Group in the United States, other countries or both.

Linux is a registered trademark of Linus Torvalds in the United States, other countries or both.

Microsoft, Windows and the Windows logo are registered trademarks of Microsoft Corporation in the United States, other countries or both.

Intel, Itanium, Pentium are registered trademarks and Xeon is a trademark of Intel Corporation or its subsidiaries in the United States, other countries or both.

AMD Opteron is a trademark of Advanced Micro Devices, Inc.

Java and all Java-based trademarks and logos are trademarks of Sun Microsystems, Inc. in the United States, other countries or both.

TPC-C and TPC-H are trademarks of the Transaction Performance Processing Council (TPPC).

SPECint, SPECfp, SPECjbb, SPECweb, SPECjAppServer, SPEC OMP, SPECviewperf, SPECcapc, SPECchpc, SPECjvm, SPECmail, SPECimap and SPECsfs are trademarks of the Standard Performance Evaluation Corp (SPEC).

NetBench is a registered trademark of Ziff Davis Media in the United States, other countries or both.

AltiVec is a trademark of Freescale Semiconductor, Inc.

Cell Broadband Engine is a trademark of Sony Computer Entertainment Inc.

InfiniBand, InfiniBand Trade Association and the InfiniBand design marks are trademarks and/or service marks of the InfiniBand Trade Association.

Other company, product and service names may be trademarks or service marks of others.