



Removable Disk Cartridge

RDX



Gareth Coates
gaz@uk.ibm.com
[@power_gaz](#)

© 2013 IBM Corporation

Jyoti Dodhia
jyoti_dodhia@uk.ibm.com
[@JyotiDodhia](#)



Agenda

- General
 - What is RDX all about
- AIX
 - Using RDX with AIX
 - Gareth Coates
- IBM I
 - Using RDX with IBM I
 - Jyoti Dodhia





Highlights

- Disk backup solution
- Durable, reliable and secure removable
- Affordable, high-capacity, shock-resistant 320 GB, 500 GB, 1.0 TB and 1.5TB cartridges
- Fast, efficient USB performance, up to 96 MBps
- Internal and external options

Pictures paint thousands of words



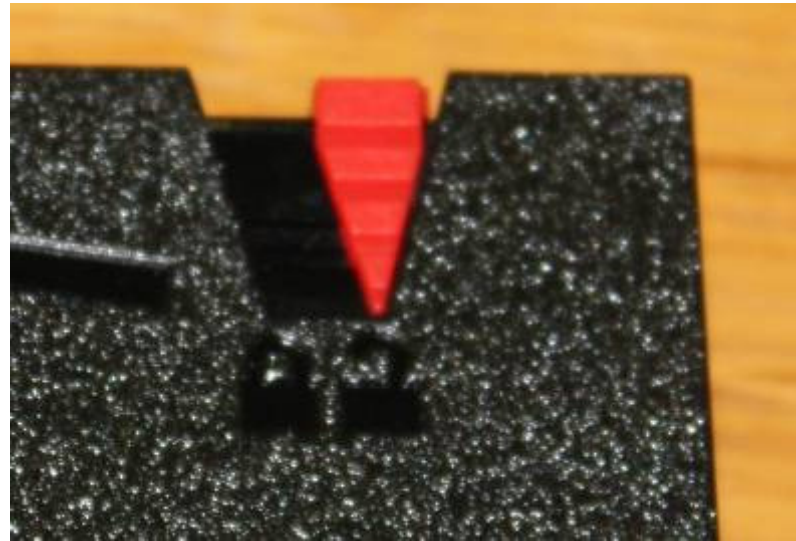
Pictures paint thousands of words



Pictures paint thousands of words



Pictures paint thousands of words



Removable Disk Drive (RDX)



Key point review:

- Entry tape alternative to VXA-2, VXA-320, DAT72, DAT160, DAT320 or 8mm
- For AIX/Linux/IBM i on POWER6 or POWER7 servers
- Rugged & Fast
- Good fit for “dirty” environments like back offices - much better than tape
- Lower total cost of ownership for many tape cartridge users

■ BladeCenter support

- RDX already available for BladeCenter PS703/704
- Attach an external docking station (#1104) to USB port on the blade



RDX

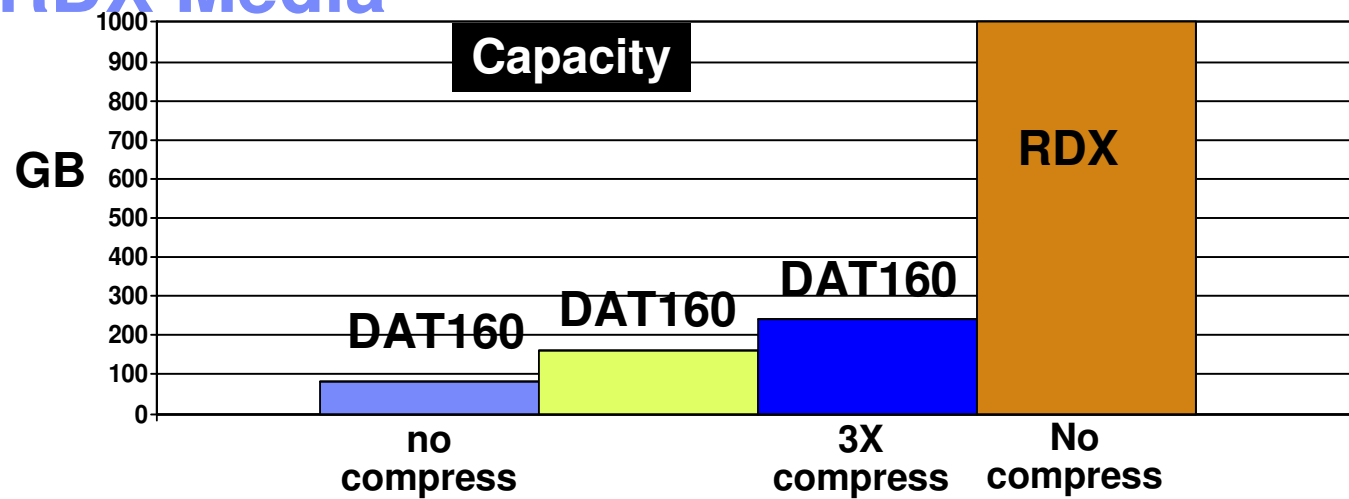
Existing Docking stations	New Docking Stations
Internal Docking Station #1103	Internal Docking Station #EU03
External Docking Station #1104	External Docking Station #EU04
Internal Docking Station #1123	Internal Docking Station #EU23

740 (Oct 2012) and are subject to change. Reseller p



- Faster than tape
- Portable (DLPAR supports it)
- Rugged
- Direct access
- Up to 1.5TB per cartridge
- Can move to bigger media
 - without needing to buy a new drive

RDX Media



RDX cartridge capacity up to 6x larger than DAT160 cartridge (uncompressed)

- RDX capacity shown is uncompressed. Any RDX compression done by software in server, not the drive.
- DAT160 compresses in the drive. DAT160 capacity uncompressed is 80GB per cartridge.
- Typical 2X compression provides for 160GB capacity. 3X compression would yield 240GB. 4X compression would yield 320GB. Etc, etc.



New RDX 1.5 TB Cartridge (#EU15)

- Expanding strategic ENTRY save/restore technology
- 50% larger capacity than previous max capacity
- Larger capacity than DAT 80/160 cartridge
- Lower cost per GB RDX storage
 - 1770% more no compression (80GB)
 - 830% more with 2X compression (160 GB)
 - 360% more with 4X compression (320 GB)
- Works on all RDX docking stations
 - #EU03, #EU04, #EU23, #1103, #1104, #1123
- Supported by AIX, IBM i, Linux



NEW
Feb 2013

RDX Cartridge	320GB #EU08	500GB #1107	1 TB #EU01	1.5 TB #EU15
\$/GB	\$0.70	\$0.59	\$0.35	\$0.33

160GB #1106 RDX withdrawn from marketing

Prices shown are IBM USA suggested list prices as of Feb 2013 on a Power 720 and are subject to change without notice; Reseller prices may vary.

RDX Potential Benefits vs Other Entry Tape Options

- Equivalent throughput to DAT160 or VXA
- Much faster access, save 30 seconds or more on start/finish of each job
- Direct access to files saves a lot of time if there are multiple files per tape and you access a single file
- Capacity - Up to 1TB uncompressed capacity per cartridge
- Media durability – RDX drives/cartridges can last for many years, up to 50 times more loads/unloads
- Cleaner: No cleaning operations or cleaning drives. Save time, money and avoid save/restore problems caused by dirty heads

RDX Potential Benefits vs Other Entry Tape Options

- Environmentally tough: Ability to work well even in 'office-dirty' environments such as a typical back office or store room
- Rugged: tougher than most tape cartridges, designed to withstand drops from table top heights
- Inexpensive docking stations
- Can move to larger capacity RDX drives from smaller capacity RDX drives without changing docking stations
- Natural fit for applications such as data logging
- Combining the ability for quickly accessing different files on the cartridge and a large 1TB capacity, can more easily use one cartridge to do daily backups without operator involvement.

HMC





Hardware Management Console (V7R7.7.0.1)


This web server is hosting the Hardware Management Console application. Click on the link below to begin.

[Log on and launch the Hardware Management Console web application.](#)

You can also [view the online help](#) for the Hardware Management Console.

 **System Status**
Status is good.

 **Attention LEDs**
Status is good.

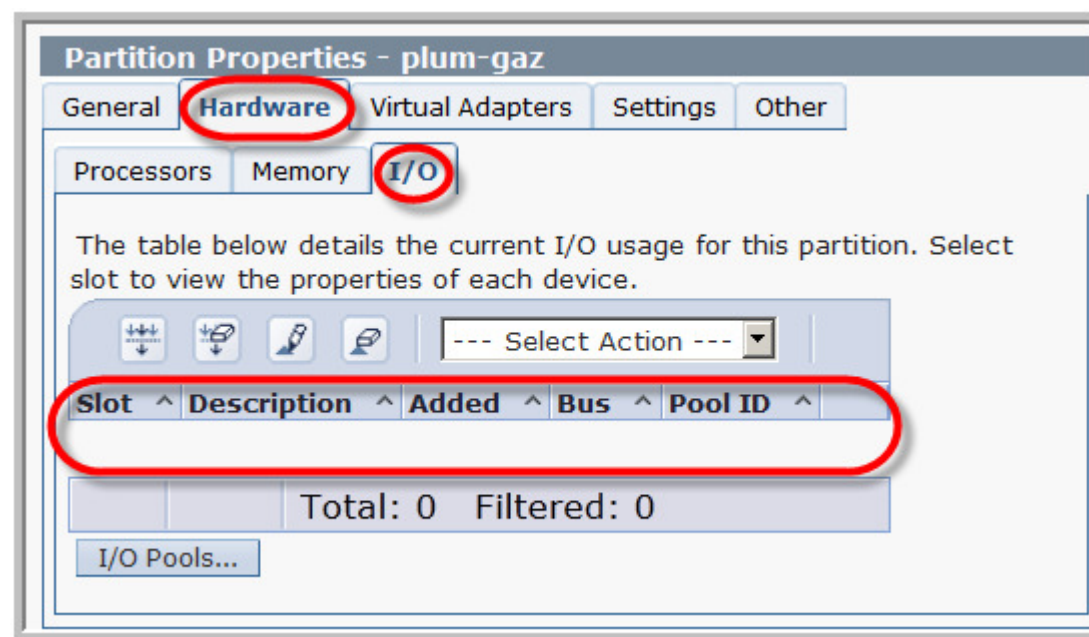
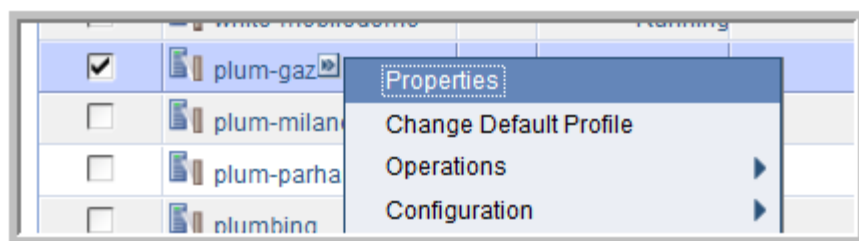
 **Serviceable Events**
Status is good.

No USB in the LPAR

```
# lsdev | grep usb  
usb0          Defined  
#
```

USB System Software

No adapter



Add it

<input checked="" type="checkbox"/>	plum-gaz	2	4	normal	AIX or Linux
<input type="checkbox"/>	plum-milan	2	10	normal	AIX or Linux
<input type="checkbox"/>	plum-parha	0.2	1	normal	AIX or Linux
<input type="checkbox"/>	plumbing	2	2	normal	AIX or Linux

Managed system that are not currently assigned to a partition are adapters you would like to add to the partition in the table and click

--- Select Action ---

Bus	Description	Pool ID	
GF0P-P1-C10	518 Empty slot	Unassigned	
<input type="checkbox"/>	U78A0.001.DNWGF0P-P1-C4	514 Fibre Channel Serial Bus	Unassigned
<input checked="" type="checkbox"/>	U78A0.001.DNWGF0P-P1-T3	513 Universal Serial Bus UHC Spec	Unassigned

Options

I/O Pool ID : Unassigned

Timeout (minutes) : 5

Detail level : 1

OK Cancel Help

We now have some devices

```
# lsdev | grep usb
usb0      Defined          USB System Software
usbhc0    Defined          00-08  USB Host Controller (33103500)
usbhc1    Defined          00-09  USB Host Controller (33103500)
usbhc2    Defined          00-0a  USB Enhanced Host Controller (3310e000)
```

```
# cfgmgr
```

```
# lsdev | grep usb
usb0      Available        USB System Software
usbhc0    Available        00-08  USB Host Controller (33103500)
usbhc1    Available        00-09  USB Host Controller (33103500)
usbhc2    Available        00-0a  USB Enhanced Host Controller (3310e000)
usbms0    Available        2.3    USB Mass Storage
```




IBM

© 2013 IBM

RDX

19

AIX

- AIX names the drive `usbmsx`
 - `usbms0`
- AIX also can use the device as a raw device,
 - `rusbms0`
- AIX uses the removable disk drive differently depending on the program being used.

AIX

- The AIX tar, backup, restore, dd, and cpio commands can write to the removable disk drive as a raw device or “cooked” (nonraw) device.
- You might get improved performance by using the device as a raw device.
- See the AIX documentation for additional information.

tar - “tape archive”

```
# time tar cvf /dev/usbms0 ./snap.pax.Z  
a ./snap.pax.Z 101087 blocks.
```

```
real      0m14.48s  
user       0m0.01s  
sys        0m0.19s  
#
```

```
# time tar cvf /dev/rmt0 ./snap.pax.Z  
a ./snap.pax.Z 101087 blocks.
```

```
real      1m16.35s  
user       0m0.02s  
sys        0m0.13s  
#
```

mksysb

- mksysb
 - builds a list of files to back up,
 - creates a universal disk format (UDF) file system
 - puts a boot image and the root volume group on the removable disk drive.
 - When the mksysb process is complete the removable disk drive can be used to boot the system.
 - If you mount the removable disk drive, you can display and copy files to and from the UDF file system on the removable disk drive.

mksysb – bootable system backup

```
# time mksysb -e -X -p /dev/usbms0
```

```
Creating list of files to back up.
```

```
Populating the UDF file system...
```

```
...
```

```
bosboot: Boot image is 34816 512 byte blocks.
```

```
Backing up 86750 files.....
```

```
3858 of 86750 files (4%).....
```

```
62275 of 86750 files (71%).....
```

```
86750 of 86750 files (100%)
```

```
0512-038 mksysb: Backup Completed Successfully.
```

```
real      11m52.80s
```

```
user      1m10.90s
```

```
sys       1m20.49s
```

smitty mountfs

Mount a File System

Type or select values in entry fields.
Press Enter AFTER making all desired changes.

	[Entry Fields]	
FILE SYSTEM name	[/dev/usbms0]	+
DIRECTORY over which to mount	[/rdx]	+
TYPE of file system	udfs	+
FORCE the mount?	no	+
REMOTE NODE containing the file system to mount	[]	
Mount as a REMOVABLE file system?	no	+
Mount as a READ-ONLY system?	no	+
Disallow DEVICE access via this mount?	no	+
Disallow execution of SUID and sgid programs in this file system?	no	+

F1=Help
F5=Reset
F9=Shell

F2=Refresh
F6=Command
F10=Exit

F3=Cancel
F7=Edit
Enter=Do

F4=List
F8=Image

```
/usr/sbin/mount -v 'udfs' /dev/usbms0 /rdx
```

filesystem

```
# ls -l /rdx
total 24
-rw-r--r--    1 root    system      6195 17 Apr 07:03 bosinst.data
-rw-r--r--    1 root    system       302 17 Apr 07:03
  .files_not_found
-rw-r--r--    1 root    system     9502 17 Apr 07:03 image.data
drwxrwxrwx    1 root    system    16384 17 Apr 07:02 lostfile.dir
-rw-r--r--    1 root    system      60 17 Apr 07:14 mkcd.data
-rw-r--r--    1 root    system     16 17 Apr 07:03 OSLEVEL
drwxr-xr-x    2 root    system    2048 17 Apr 07:03 ppc
drwxr-xr-x    3 root    system    2048 17 Apr 07:03 root
drwxr-xr-x    2 root    system    2048 17 Apr 07:03 sbin
drwxr-xr-x    8 root    system    2048 17 Apr 07:03 usr
#
```

```
# cd /rdx
# touch hello_world
# ls -l he*
-rw-r--r--    1 root    system      0 17 Apr 07:44 hello_world
#
```

JFS2

```
# mkfs -V jfs2 /dev/rusbms0
mkfs: destroy /dev/rusbms0 (yes)? yes
File system created successfully.
156281832 kilobytes total disk space.
Device /dev/rusbms0:
  Standard empty filesystem
  Size:          312563664 512-byte (DEVBLKSIZE) blocks
#

# mount -o log=NULL /dev/usbms0 /rdx
#

# ls -l /rdx
total 0
drwxr-xr-x    2 root      system          256 17 Apr 07:49 lost+found
#
```

booting

```
HMC11
Version EL350_118
SMS 1.7 (c) Copyright IBM Corp. 2000,2008 All rights reserved.
-----
Select Media Type
1.  SCSI
2.  SSA
3.  SAN
4.  SAS
5.  SATA
6.  USB
7.  IDE
8.  ISA
9.  List All Devices
-----
Navigation keys:
M = return to Main Menu
ESC key = return to previous screen          X = eXit System Management Services
-----
Type menu item number and press Enter or select Navigation key: █
```

```
HMC11
Version EL350_118
SMS 1.7 (c) Copyright IBM Corp. 2000,2008 All rights reserved.
-----
Select Device
Device Current Device
Number Position Name
1.      -      USB Disk
          ( loc=U78A0.001.DNWGFOP-P1-T4-L1-L0-L0 )
```

booting

```
                Welcome to AIX.
                boot image timestamp: 06:03:23 04/17/2013
                The current time and date: 06:30:16 04/17/2013
                processor count: 4; memory size: 4096MB; kernel size: 36256296
boot device: /pci@800000020000201/usb@1,1/hub@1/usb-
            scsi@1/disk@0,0:\ppc\chrp\bootfile.exe
```

***** Please define the System Console. *****

Type a 1 and press Enter to use this terminal as the system console.

Pour definir ce terminal comme console systeme, appuyez sur 1 puis sur Entree.

Taste 1 und anschliessend die Eingabetaste druecken, um diese Datenstation als Systemkonsole zu verwenden.

Premere il tasto 1 ed Invio per usare questo terminal come console.

Escriba 1 y pulse Intro para utilizar esta terminal como consola del sistema.

Escriviu 1 i premeu Intro per utilitzar aquest terminal com a consola del sistema.

Digite um 1 e pressione Enter para utilizar este terminal como console do sistema.

Using the drive with Linux

- Linux configures the drive as a disk drive with a name in the format sdx,
 - sda
- See the Linux documentation for information about using Linux copy and backup commands.





Removable Disk Cartridge (RDX) and IBM i

Jyoti Dodhia
jyoti_dodhia@uk.ibm.com

IBM i RDX Support



- Strategic alternate entry media option to DAT160
- Can improve performance, reliability, operations
- POWER6 and POWER7 config options
- IBM i RDX support provided in two ways
 - Via **USB** interface
 - IBM i 7.1 TR5
 - For POWER7 servers
 - #EU03 or #EU04 docking stations
 - Via **SATA** interface ... new RDX docking station
 - IBM i 6.1.1 and 7.1 TR5
 - Used for many POWER6 and POWER7 servers
- Oct 2012 announcement letter
 - http://www-01.ibm.com/common/ssi/ShowDoc.wss?docURL=/common/ssi/rep_ca/0/897/ENUS112-180/index.html&lang=en&request_locale=en
- Wiki
 - <https://www.ibm.com/developerworks/mydeveloperworks/wikis/home?lang=en#/wiki/IBM%20Removable%20Media%20on%20IBM%20i/page/Removable%20Disk%20Cartridge%20%28RDX%29%20on%20Removable%20Mass%20Storage%20%28RMS%29>
- Blog entry
 - http://ibmsystemsmag.blogs.com/i_can/2012/12/removable-mass-storage.html

What is supported from IBM i perspective?

	USB Internal Docking EU03	USB Internal Docking EU23	USB External Docking EU04	SATA Internal Docking EU07
Power 6	-	-	-	Y 520, 550
Power 7	Y 720, 740, 750, 760	-	Y 710→780	Y 720, 740, 750, 760
IBM i6.1.1 + PTFs (alternate IPL not supported)	-	-	-	Y dev type 632A
IBM i7.1 + TR5 (alternate IPL supported)	Y	-	Y	Y dev type 63B8
IBM iVirtualization (IBMi hosting IBMi): Hosting = i7.1 Client = i7.1 TR5 or i6.1.1+PTFs	Y Devtype – i6.1.1 : 632C i7.1 : 63B8	-	Y Devtype – i6.1.1 : 632C i7.1 : 63B8	Y Devtype – i6.1.1 : 632C i7.1 : 63B8
VIOS	-	-	-	-

IBM i **USB** RDX Support Details

- **IBM i 7.1 TR5 required**
 - Alternate IPL supported
 - (See SATA RDX #EU07 for IBM i 6.1)
- **Used for POWER7 servers**
 - **Internal docking station:**
 - Power 720 (8202-E4B/E4C/E4D)
 - Power 740 (8205-E6B/E6C/E6D)
 - Power 750 (8233-E8B/8408-E8D)
 - Power 760 (9109-RMD)
 - **External docking station:**
 - 710 → 780 (8231-E2B/E1C/E2C/E1D/E2D, 8202-E4B/E4C, 8205-E6B/E6C, 8233-E8B, 9117-MMB/MMC/MMD and 9179-MHB/MHC/MHD)
- **#EU03 internal and #EU04 external docking stations**
 - #EU23 internal docking station not supported
 - Older USB-2 #1103/#1104/#1123 not supported



IBM i supports the USB ports on the system unit, but does not support the USB adapter #2728. Multifunction Card #1768/#1769 is required for the USB ports on that system unit to be active.

Note on the 9117-MMC/D and 9179-MHC/MHD a

IBM i **SATA** RDX Support Details



- **IBM i 6.1.1 with PTFs or 7.1 TR5 required**
 - Alternate IPL supported for 7.1 TR5
 - Alternate IPL not supported for 6.1.1
 - (If IBM i 7.1 see also USB RDX #EU03/EU04)
- **Used for POWER6 servers**
 - Internal docking station:
 - Power 520 (8203-E4A, 9407-M15, 9408-M25)
 - Power 550 (8204-E8A, 9409-M50)
- **Used for POWER7 servers**
 - Internal docking stations:
 - Power 720 (8202-E4B/E4C/E4D)
 - Power 740 (8205-E6B/E6C/E6D)
 - Power 750 (8233-E8B/8408-E8D)
 - Power 760 (9109-RMD)
- **#EU07 SATA Internal Docking Station**
 - External SATA docking stations: Not offered



IBM i RDX Operational Details/Insights



- Hardware Infocenter – Managing removable disk drives -
<http://pic.dhe.ibm.com/infocenter/powersys/v3r1m5/topic/p7hdt/p7hdtrdx.htm>
- Section on Storage Solutions on InfoCenter provides key RDX information for IBM i clients:
<http://pic.dhe.ibm.com/infocenter/series/v7r1m0/index.jsp?topic=/rzam4/rzam4rms.htm>
- For example ...
 - “RMS devices and media are similar to optical storage regarding behavior and access interfaces. They are managed and used with existing optical device functions and commands. See Optical storage as a reference guide for use of these devices and media. RMS media are handled the same as optical volumes, and as such are also accessible through the QOPT file system by using the hierarchical file system (HFS) and integrated file system (IFS) APIs. RMS media are formatted with the industry standard Universal Disk Format (UDF) version 2.5.”
- Shows up at RMSxx device
- IBM i 7.1 can virtualize to other IBM i partitions
- VIOS does not virtualize RDX
- Alternate IPL supported for 7.1 TR5
 - Without an HMC, there is no way to tag the USB bus as the source for a D-mode IPL. So...
 - You must IPL from a DVD
 - Use the alternate device support at DST to select a USB device
 - This is true for ALL the USB devices



BRMS Updated to Support RDX



This offering will show up as RMSxx devices, but will be classified as Optical (random access spinning media) and associated commands.

BRMS support via Optical Support

- 32 character volume ids
 - Volume selection done upfront
 - DUPMEDBRM (DUPOPT), etc.
- BRMS PTF requirements for RDX listed on BRMS for i wiki :
- <https://www.ibm.com/developerworks/mydeveloperworks/wikis/home?lang=en#/wiki/IBM%20Backup%2C%20Recovery%20and%20Media%20Services%20%28BRMS%29%20for%20i/page/Removable%20Disk%20Cartridge%20%28RDX%29%20on%20Removable%20Mass%20Storage%20%28RMS%29>
 - i7.1 TR5 + SI47039
 - i6.1.1 + SI47038, SI47648, MF54369



BRMS RDX Considerations



There are RDX operational differences of “optical” vs “tape” in BRMS ... true for all optical (RDX is categorized as optical)

Restrictions/Requirements

- The media policy option to ‘Mark history for duplication’ is restricted to *NO. BRMS does not allow duplication of optical history items.
- BRMS does not provide tracking of opposite side volume identifiers or double-sided volumes. Each piece of media is viewed as a single volume.
- No optical support for the following BRMS functions: Dump BRMS (DMPBRM), Add Media Information to BRM (ADDMEDIBRM), Extract Media Information (EXTMEDIBRM), Print Media Exceptions for BRM (PRTMEDBRM), and no reclaim support.
- Only one Device (DEV) parameter can be specified. Optical support does not support cascading or parallel processing.
- Optical media libraries cannot be shared between systems in a BRMS network.
- Duplicate media using BRM (DUPMEDBRM) will only duplicate entire optical volumes and the output volume must have the same physical characteristics as the volume specified on the FROMVOL parameter.
- Optical does not support remote duplication. Duplicate media using BRM (DUPMEDBRM) values for the From system (FROMSYS) parameter only support *LCL.
- Optical devices do not support software data encryption.
- BRMS has the same restrictions as the system save/restore commands.

New RDX 1.5 TB Cartridge (#EU15)

- Expanding strategic ENTRY save/restore technology
- 50% larger capacity than previous max capacity
- Larger capacity than DAT 80/160 cartridge
- Lower cost per GB RDX storage
 - 1770% more no compression (80GB)
 - 830% more with 2X compression (160 GB)
 - 360% more with 4X compression (320 GB)
- Works on all RDX docking stations
 - #EU03, #EU04, #EU23, #1103, #1104, #1123
- Supported by AIX, IBM i, Linux



NEW
Feb 2013

RDX Cartridge	320GB #EU08	500GB #1107	1 TB #EU01	1.5 TB #EU15
\$/GB	\$0.70	\$0.59	\$0.35	\$0.33

160GB #1106 RDX withdrawn from marketing

Prices shown are IBM USA suggested list prices as of Feb 2013 on a Power 720 and are subject to change without notice; Reseller prices may vary.

Performance

- Performance better than typical for low cost tape drives (DAT)
- SATA device can achieve rates over 180GB/Hr.
- Performance Capabilities Reference
 - http://www-03.ibm.com/systems/resources/systems_power_software_i_perfmgmt_pcmr_feb2013.pdf
 - Chapter 9.1 Supported Backup Device Rates
 - RDX USB – 5.5 MB/s, 2.8 compaction factor
 - RDX SATA - 26 MB/s, 2.8 compaction factor
 - Chapter 9.29 RDX Device Performance
 - Detailed table comparing tape drives and SATA/USB RDX with and without data compression for different type of save/restore

Session A - [24 x 80]

File Edit View Communication Actions Window Help

Host: hmc10.aixncc.uk.ibm. Port: 2300 Workstation ID: JDTP Disconnect

Work with Device Descriptions

System: DIAMOND5

Position to Starting characters

Type options, press Enter.

2=Change 3=Copy 4>Delete 5=Display 6=Print 7=Rename
8=Work with status 9=Retrieve source

Opt	Device	Type	Text
_	QPADEV0001	3477	Device created for DIAMOND5.
_	QPADEV0002	V100	Device created for DIAMOND5.
_	QQAHOST	*APPC	
_	QTIDA	*APPC	
_	QTIDA2	*APPC	
_	RMS01	63B8	CREATED BY AUTO-CONFIGURATION

Bottom

Parameters or command
==>

F3=Exit F4=Prompt F5=Refresh F6=Create F9=Retrieve F12=Cancel
F14=Work with status

M A 10/003

Connected to remote server/host hmc10.aixncc.uk.ibm.com using port 2300

Session A - [24 x 80]

File Edit View Communication Actions Window Help

Host: hmc10.aixncc.uk.ibm. Port: 2300 Workstation ID: JDTP Disconnect

Display Device Description DIAMOND5
19/12/12 11:07:31

```

Device description . . . . . : RMS01
Option . . . . . : *BASIC
Category of device . . . . . : *OPT

Device type . . . . . : 63B8
Device model . . . . . : 005
Resource name . . . . . : RMS01
Local internet address . . . . . : *NONE

Online at IPL . . . . . : *YES
Message queue . . . . . : QSYSOPR
  Library . . . . . : QSYS
Current message queue . . . . . : QSYSOPR
  Library . . . . . : QSYS
Last activity date . . . . . :

More . . .

Press Enter to continue

F3=Exit  F11=Display keywords  F12=Cancel
    
```

M A 01/001

Connected to remote server/host hmc10.aixncc.uk.ibm.com using port 2300

Session A - [24 x 80]

File Edit View Communication Actions Window Help

Host: hmc10.aixncc.uk.ibm. Port: 2300 Workstation ID: JDTP Disconnect

```

Display Device Description
19/12/12 11:07:31
Device description . . . . . : RMS01
Option . . . . . : *SPTMEDTYP
Category of device . . . . . : *OPT

-----Supported media types-----
Media types      Read      Write      Record
*RDX              X          X
    
```

Bottom

Press Enter to continue.

F3=Exit F11=Display keywords F12=Cancel

M A 01/001

Connected to remote server/host hmc10.aixncc.uk.ibm.com using port 2300

Session A - [24 x 80]

File Edit View Communication Actions Window Help

Host: hmc10.aixncc.uk.ibm. Port: 2300 Workstation ID: JDTP Disconnect

Work with Configuration Status DIAMOND5

19/12/12 11:10:46

Position to Starting characters

Type options, press Enter.

1=Vary on 2=Vary off 5=Work with job 8=Work with description
 9=Display mode status 13=Work with APPN status...

Opt	Description	Status	-----Job-----
—	RMS01	ACTIVE	

Bottom

Parameters or command
 ==>

F3=Exit F4=Prompt F12=Cancel F23=More options F24=More keys

M A 10/002

Connected to remote server/host hmc10.aixncc.uk.ibm.com using port 2300

Session A - [24 x 80]

File Edit View Communication Actions Window Help

Host: hmc10.aixncc.uk.ibm. Port: 2300 Workstation ID: JDTP Disconnect

Work with Optical Volumes

System: DIAMOND5

Device *ALL
 Side information *ALL
 Type options, press Enter.
 1=Add 2=Change 3=Copy 4=Remove 5=Display 8=Work with directories
 10=Initialize 11=Work with object links 12=Duplicate ...

Opt	Volume	Device	Volume Type	Media Type	Authorization List
—	121219105306	RMS01	*UNKNOWN	*UNKNOWN	QOPTSEC

Bottom

Parameters or command
 ==>

F3=Exit F4=Prompt F5=Refresh F6=Print list F9=Retrieve F11=View 2
 F12=Cancel F14=Show extended information F24=More keys

MA A 12/002

Connected to remote server/host hmc10.aixncc.uk.ibm.com using port 2300

Session A - [24 x 80]

File Edit View Communication Actions Window Help

Host: hmc10.aixncc.uk.ibm. Port: 2300 Workstation ID: JDTP Disconnect

Display Optical Volume Attributes

```

Volume . . . . . : 121219105306
Device . . . . . : RMS01
Authorization list . . . . . : QOPTSEC

Volume Header Information:
Internal Volume ID . . . . . : 121219105306
Serial Number . . . . . :
Volume type . . . . . : *UNKNOWN
Media type . . . . . : *UNKNOWN
Media format . . . . . : *UNKNOWN
Coded character set ID . . . . . : 500
Volume-full threshold . . . . . : 100
Volume sequence number . . . . . : 0
Create date . . . . . :
Create time . . . . . :
Text . . . . . :
    
```

More . . .

Press Enter to continue.

F3=Exit F12=Cancel F14=Additional volume attributes

M A 01/001

Connected to remote server/host hmc10.aixncc.uk.ibm.com using port 2300

Session A - [24 x 80]

File Edit View Communication Actions Window Help

Host: hmc10.aixncc.uk.ibm. Port: 2300 Workstation ID: JDTP Disconnect

Display Optical Volume Attributes

```

Usage Information:
Last reference date . . . . . : 19/12/12
Volume on opposite side . . . . . :
Block size . . . . . : 512
Volume capacity (bytes) . . . . . : 160037691392
Space available on volume (bytes) . . . . . : 0
Percentage Used . . . . . : 0.0

Status Information:
Volume location . . . . . : RMS01
Volume access . . . . . : Writeable
Double volume . . . . . : No
Double sided . . . . . : No
IPL capable . . . . . : No
Volume held by . . . . . : *NONE
    
```

Bottom

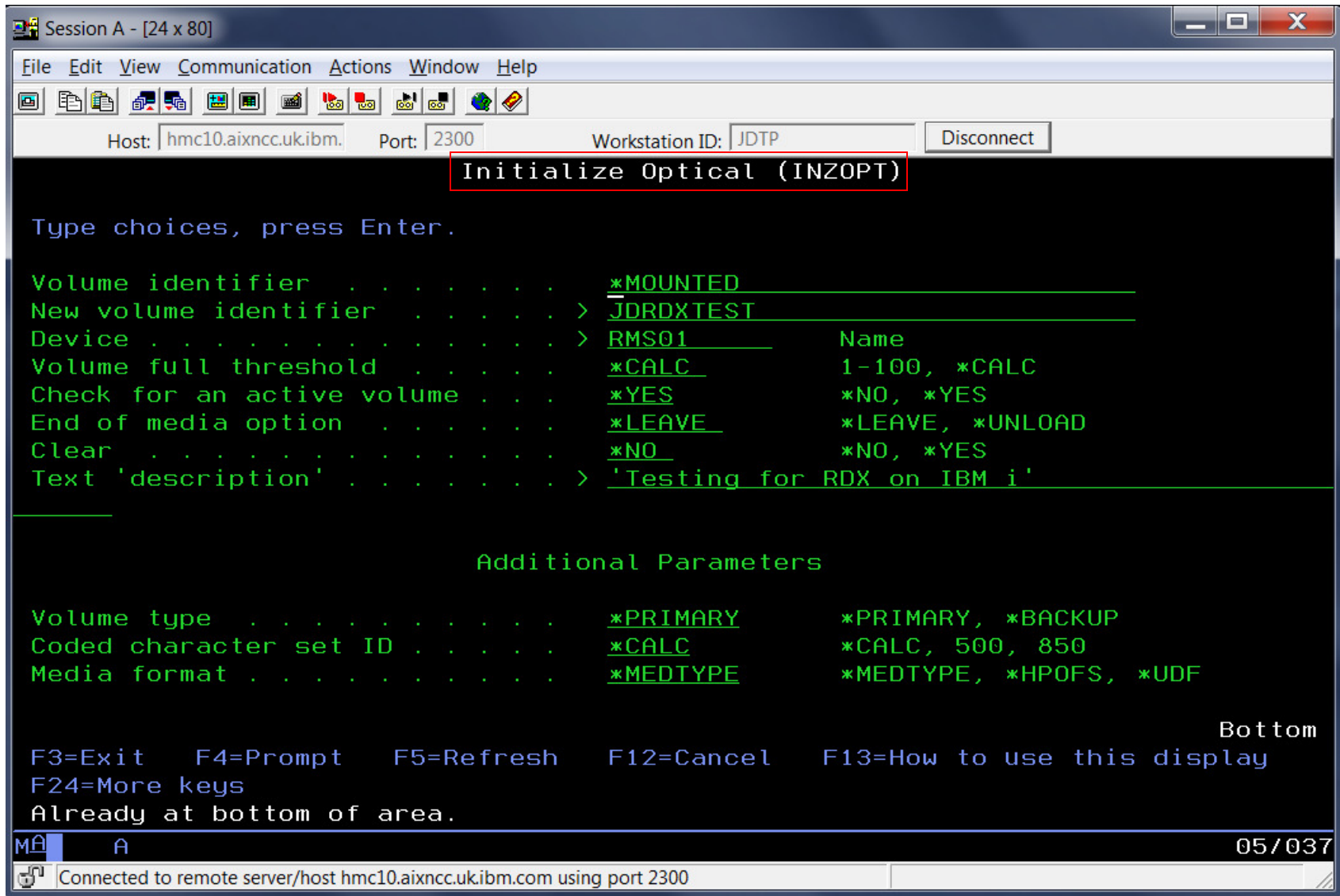
Press Enter to continue.

F3=Exit F12=Cancel F14=Additional volume attributes

M A 01/001

Connected to remote server/host hmc10.aixncc.uk.ibm.com using port 2300

INZOPT NEWVOL(JDRDXTEST) DEV(RMS01) TEXT('Testing for RDX on IBM i') :



SAVLIB LIB(QGPL) DEV(RMS01)

→ 91 objects saved from library QGPL

Display Optical :

1 of 2

```

Session A - [24 x 80]
File Edit View Communication Actions Window Help
Host: hmc10.aixncc.uk.ibm. Port: 2300 Workstation ID: JDTP Disconnect
Display Optical Volume Attributes

Volume . . . . . : JDRDXTEST
Device . . . . . : RMS01
Authorization list . . . . . : QOPTSEC

Volume Header Information:
Internal Volume ID . . . . . : JDRDXTEST
Serial Number . . . . . : 5166025
Volume type . . . . . : *PRIMARY
Media type . . . . . : *UNKNOWN
Media format . . . . . : *UDF
Coded character set ID . . . . . : 500
Volume-full threshold . . . . . : 100
Volume sequence number . . . . . : 0
Create date . . . . . : 19/12/12
Create time . . . . . : 11:34:42
Text . . . . . : Testing for RDX on IBM i

More...

Press Enter to continue.

_F3=Exit F12=Cancel F14=Additional volume attributes

MA A 23/001
Connected to remote server/host hmc10.aixncc.uk.ibm.com using port 2300
    
```

2 of 2

Session A - [24 x 80]

File Edit View Communication Actions Window Help

Host: hmc10.aixncc.uk.ibm. Port: 2300 Workstation ID: JDTP Disconnect

Display Optical Volume Attributes

```

Usage Information:
  Last reference date . . . . . : 19/12/12
  Volume on opposite side . . . . . :
  Block size . . . . . : 512
  Volume capacity (bytes) . . . . . : 160037691392
  Space available on volume (bytes) . . . . . : 159031462400
  Percentage used . . . . . : .62

Status Information:
  Volume location . . . . . : RMS01
  Volume access . . . . . : Writeable
  Double volume . . . . . : No
  Double sided . . . . . : No
  IPL capable . . . . . : No
  Volume held by . . . . . : *SYSTEM
    
```

Bottom

Press Enter to continue.

F3=Exit F12=Cancel F14=Additional volume attributes

MA A 23/001

Connected to remote server/host hmc10.aixncc.uk.ibm.com using port 2300

DSPOPT VOL(*MOUNTED) DEV(RMS01) DATA(*SAVRST) PATH(*ALL) :

Session A - [24 x 80]

File Edit View Communication Actions Window Help

Host: hmc10.aixncc.uk.ibm. Port: 2300 Workstation ID: JDTP Disconnect

Display Saved Objects

Library saved : QGPL

Type Options, press Enter.
5=Display

Opt	Object	Type	Attribute	Owner	Size (K)	Data
=	QGPL	*LIB	PROD	QSYS	5304	YES
—	QZDAPKG	*SQLPKG		QSYS	96	YES
—	QBASE	*JOBQ		QPGMR	32	YES
—	QBATCH	*JOBQ		QPGMR	32	YES
—	QFNC	*JOBQ		QFNC	32	YES
—	QINTER	*JOBQ		QPGMR	32	YES
—	QPGMR	*JOBQ		QPGMR	32	YES
—	QSNADS	*JOBQ		QSNADS	32	YES
—	QSPL	*JOBQ		QPGMR	32	YES
—	QS36EVOKE	*JOBQ		QPGMR	32	YES
—	QS36MRT	*JOBQ		QPGMR	32	YES
—	QTXSRCH	*JOBQ		QPGMR	32	YES
—	QDKT	*OUTQ		QPGMR	32	YES

More...

F3=Exit F11=Alternate view F12=Cancel F16=Display header

M A 09/003

Connected to remote server/host hmc10.aixncc.uk.ibm.com using port 2300

RSTLIB SAVLIB(QGPL) DEV(RMS01) RSTLIB(JYOTI) :

Session A - [24 x 80]

File Edit View Communication Actions Window Help

Host: hmc10.aixncc.uk.ibm. Port: 2300 Workstation ID: JDTP Disconnect

Display Library

```

Library . . . . . : JYOTI           Number of objects . : 89
Type . . . . . : PROD           Library ASP number . : 1
Create authority . : *SYSVAL       Library ASP device . : *SYSBAS
                                           Library ASP group . : *SYSBAS
    
```

Type options, press Enter.
 5=Display full attributes 8=Display service attributes

Opt	Object	Type	Attribute	Size	Text
—	QBASE	*JOBQ		32768	QBASE Subsystem Job Q
—	QBATCH	*JOBQ		32768	Batch Subsystem Queue
—	QFNC	*JOBQ		32768	Finance Subsystem Job
—	QINTER	*JOBQ		32768	Interactive Subsystem
—	QPGMR	*JOBQ		32768	Programmer Subsystem
—	QSNADS	*JOBQ		32768	SNADS Subsystem Job Q
—	QSPL	*JOBQ		32768	Spooling Subsystem Qu
—	QS36EVOKE	*JOBQ		32768	QS36EVOKE Job Queue
—	QS36MRT	*JOBQ		32768	QS36MRT Job Queue.
—	QTXTSRCH	*JOBQ		32768	Text Search Services

More . . .

F3=Exit F12=Cancel F17=Top F18=Bottom
 (C) COPYRIGHT IBM CORP. 1980, 2009.

M A A 12/003

Connected to remote server/host hmc10.aixncc.uk.ibm.com using port 2300

When done.....

```
Vary off RMS01 - VRYCFG CFGOBJ(RMS01) CFGTYPE(*DEV)  
STATUS(*OFF)
```

Note :

The external USB devices allow the cable to be unplugged without a configuration change (removing the IOA from the partition, or powering off), but the device should be varied off (VRYCFG) before the device is unplugged.

USB devices

- Without an HMC
 - There is no way to tag the USB bus as the source for a D-mode IPL
 - So...
 - You must IPL from a DVD
 - Use the alternate device support at DST to select a USB device
 - This is true for ALL the USB devices

- Note: new – IBM i supports USB Flash Drive
 - IBM i 7.1 TR 6 on POWER7+ and POWER7 systems
 - Device appears to the system when plugged into a USB port that is configured to be in an i partition.
 - Like RDX, it is an optical class device, and may be used with save/restore or with the QOPT file system in IFS

 - More info at :
 - IBM i Technology Updates wiki
 - IBM i I/O Support Details
 - <https://www.ibm.com/developerworks/mydeveloperworks/wikis/home/wiki/IBM%20i%20Technology%20Updates/page/IBM%20i%20IO%20Support%20Details?lang=en>
 - Blog entry
 - http://ibmsystemsmag.blogs.com/i_can/2013/02/ibm-i-now-supports-usb-flash-drives.html

Resources

- Oct 2012 announcement letter
 - http://www-01.ibm.com/common/ssi/ShowDoc.wss?docURL=/common/ssi/rep_ca/0/897/ENUS112-180/index.html&lang=en&request_locale=en
- Wiki
 - <https://www.ibm.com/developerworks/mydeveloperworks/wikis/home?lang=en#/wiki/IBM%20Removable%20Media%20on%20IBM%20i/page/Removable%20Disk%20Cartridge%20%28RDX%29%20on%20Removable%20Mass%20Storage%20%28RMS%29>
- Blog entry
 - http://ibmsystemsmag.blogs.com/i_can/2012/12/removable-mass-storage.html
- Hardware Infocenter – Managing removable disk drives -
<http://pic.dhe.ibm.com/infocenter/powersys/v3r1m5/topic/p7hdt/p7hdtrdx.htm>
- Section on Storage Solutions on InfoCenter provides key RDX information for IBM i clients:
<http://pic.dhe.ibm.com/infocenter/series/v7r1m0/index.jsp?topic=/rzam4/rzam4rms.htm>
- BRMS PTF requirements for RDX listed on BRMS for i wiki :
 - <https://www.ibm.com/developerworks/mydeveloperworks/wikis/home?lang=en#/wiki/IBM%20Backup%2C%20Recovery%20and%20Media%20Services%20%28BRMS%29%20for%20i/page/Removable%20Disk%20Cartridge%20%28RDX%29%20on%20Removable%20Mass%20Storage%20%28RMS%29>
- Performance Capabilities Reference
 - http://www-03.ibm.com/systems/resources/systems_power_software_i_perfmgmt_pcmr_feb2013.pdf

Summary

- The RDX family of docking stations and cartridges offer flexible and cost-effective alternatives to tape drives.
- They are easy to use and are very portable.



Thanks!!!

W5: Pillars of Star Formation © NASA