

# IBM Navigator

A brand-new interface

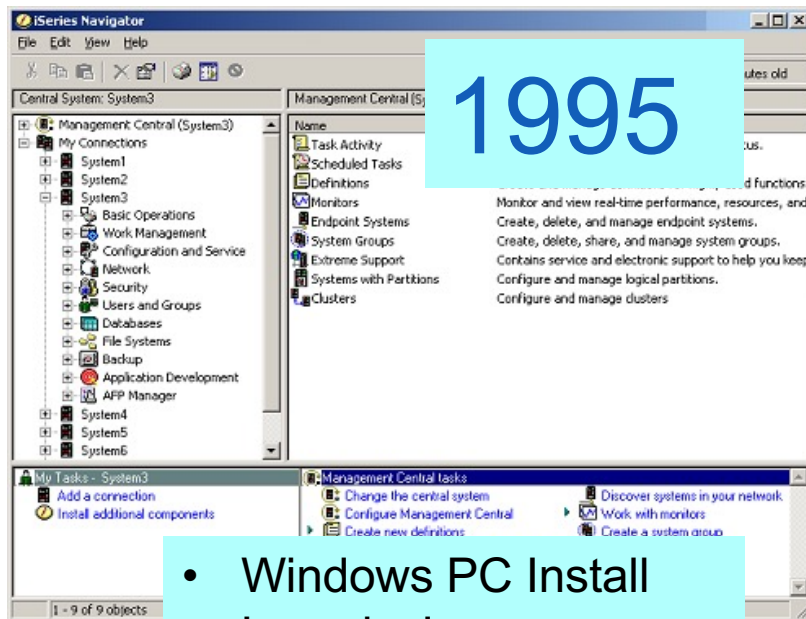
Tim Rowe – [timmr@us.ibm.com](mailto:timmr@us.ibm.com)  
Business Architect IBM i

Lora Powell - [lrpowell@us.ibm.com](mailto:lrpowell@us.ibm.com)  
Team Lead PDI

The image shows the text 'IBM i' in a large, bold, blue font. The letters 'I', 'B', and 'M' are in a standard sans-serif font, while the 'i' is lowercase and has a distinct dot. The entire text is set against a solid black rectangular background.The image shows the classic IBM logo, consisting of the letters 'IBM' in a white, bold, sans-serif font. The letters are slightly spaced out and have a subtle shadow effect, giving them a three-dimensional appearance as if they are floating above a surface.

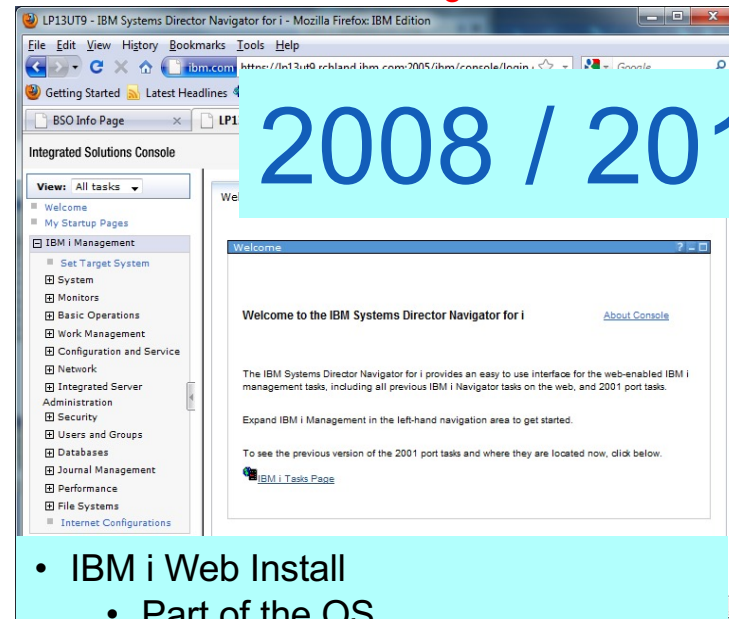
# Navigator - History

## Original Navigator



- Windows PC Install
- Largely Java
- UI built on Java Swing

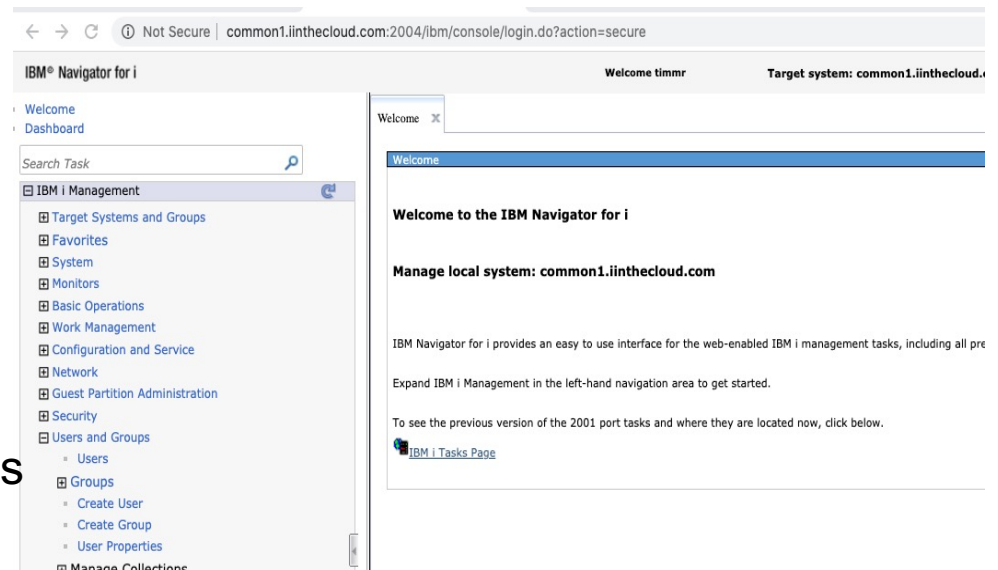
## Current – Web Based Navigator



- IBM i Web Install
  - Part of the OS
- PC based solution ported to Web
  - Java Swing replaced with
  - ISC and AUIML (IBM Web Tech)
- Shoe horned in DoJo for 2013

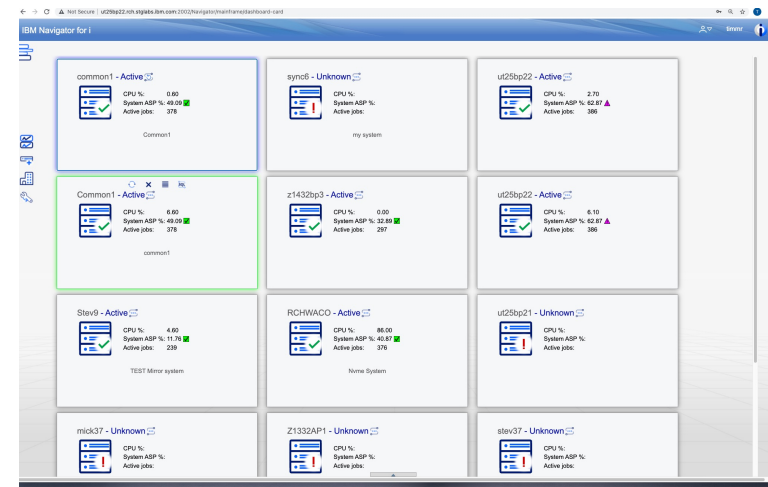
## Why Change ?

- Infrastructure, NO longer supported
  - Mitigate Security Exposure
- Single node management
  - Difficult to switch between nodes
- No 'single pane' for all managed nodes
- UI technology very old looking
  - Very Low in usability and performance, Rich in function



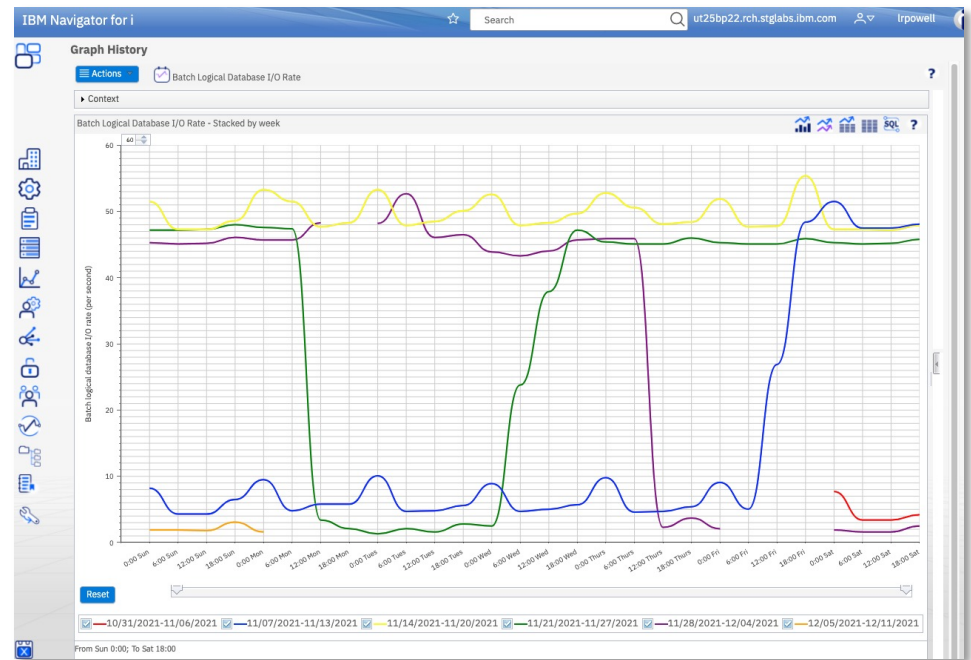
## Design Directions – ‘New Nav’

- Tool to provide a secure modern interface for accessing, managing, and monitoring ALL IBM i nodes within a customers infrastructure in new ways
- ‘Client’ for accessing, monitoring and managing one or many IBM i nodes
- Improved monitoring capability for one or many endpoints
- Built on Angular Technology
- Leveraging IBM i Services for data retrieval
- End to End Secure



# Performance Data Investigator

- System Monitors
- Manage Collections
- Collection Services Configuration
- Graph History
- Investigate Data



Link to PDI documentation: <https://www.ibm.com/support/pages/node/6483413>

# How do you get it

The IBM Navigator is shipped as part of SS1 option3

- Latest HTTP PTF Group
- Latest Database PTF Group

Documentation - [www.ibm.com/support/pages/node/6483299](http://www.ibm.com/support/pages/node/6483299)

## PTF Group Released!!!

Demo Time

IBM i Anywhere  
IBM i Everywhere

# Demo Time

## What's in the Future

- Authority Collection
- System Monitoring Visualization
- Message Monitoring
- IFS Tree view and Configuration
- TCP/IP Servers Properties
  - LDAP server configuration
- Audit Journal Discovery
- Complete Networking Support
- Job Monitors
- JVM Job Actions
- Tape Support
- Single Sign On
- Plenty more...

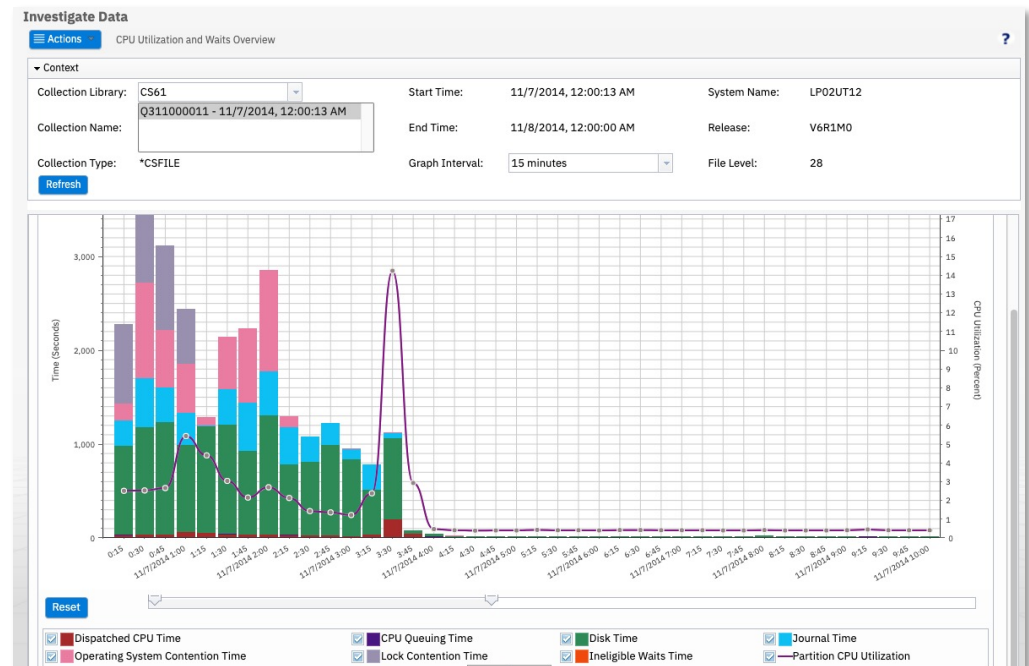


<https://www.ibm.com/support/pages/node/6485241>



# What's in the Future – for Performance Data Investigator **IBM i Anywhere** **IBM i Everywhere**

- Investigate Data
  - Breadcrumbs support
  - Favorites
  - Launch to new browser tab
- Reports
- Monitors
  - Visualization dashboard
  - Visualize thresholds
- Health Indicators package
  - Support multiple collections
  - Modify thresholds
- Manage collections
  - Remainder of actions





# Notices and disclaimers

- © 2021 International Business Machines Corporation. No part of this document may be reproduced or transmitted in any form without written permission from IBM.
- **U.S. Government Users Restricted Rights — use, duplication or disclosure restricted by GSA ADP Schedule Contract with IBM.**
- Information in these presentations (including information relating to products that have not yet been announced by IBM) has been reviewed for accuracy as of the date of initial publication and could include unintentional technical or typographical errors. IBM shall have no responsibility to update this information. **This document is distributed “as is” without any warranty, either express or implied. In no event, shall IBM be liable for any damage arising from the use of this information, including but not limited to, loss of data, business interruption, loss of profit or loss of opportunity.** IBM products and services are warranted per the terms and conditions of the agreements under which they are provided.
- IBM products are manufactured from new parts or new and used parts. In some cases, a product may not be new and may have been previously installed. Regardless, our warranty terms apply.”
- **Any statements regarding IBM's future direction, intent or product plans are subject to change or withdrawal without notice.**
- Performance data contained herein was generally obtained in a controlled, isolated environments. Customer examples are presented as illustrations of how those
- customers have used IBM products and the results they may have achieved. Actual performance, cost, savings or other results in other operating environments may vary.
- References in this document to IBM products, programs, or services does not imply that IBM intends to make such products, programs or services available in all countries in which IBM operates or does business.
- Workshops, sessions and associated materials may have been prepared by independent session speakers, and do not necessarily reflect the views of IBM. All materials and discussions are provided for informational purposes only, and are neither intended to, nor shall constitute legal or other guidance or advice to any individual participant or their specific situation.
- It is the customer's responsibility to insure its own compliance with legal requirements and to obtain advice of competent legal counsel as to the identification and interpretation of any relevant laws and regulatory requirements that may affect the customer's business and any actions the customer may need to take to comply with such laws. IBM does not provide legal advice or represent or warrant that its services or products will ensure that the customer follows any law.<sup>11</sup>

# Notices and disclaimers

- Information concerning non-IBM products was obtained from the suppliers of those products, their published announcements or other publicly available sources. IBM has not tested those products about this publication and cannot confirm the accuracy of performance, compatibility or any other claims related to non-IBM products. Questions on the capabilities of non-IBM products should be addressed to the suppliers of those products. IBM does not warrant the quality of any third-party products, or the ability of any such third-party products to interoperate with IBM's products. **IBM expressly disclaims all warranties, expressed or implied, including but not limited to, the implied warranties of merchantability and fitness for a purpose.**
- The provision of the information contained herein is not intended to, and does not, grant any right or license under any IBM patents, copyrights, trademarks or other intellectual property right.
- IBM, the IBM logo, ibm.com and [names of other referenced IBM products and services used in the presentation] are trademarks of International Business Machines Corporation, registered in many jurisdictions worldwide. Other product and service names might be trademarks of IBM or other companies. A current list of IBM trademarks is available on the Web at "Copyright and trademark information" at: [www.ibm.com/legal/copytrade.shtml](http://www.ibm.com/legal/copytrade.shtml)