

IBM System Storage® Brocade Series update

Krzysztof Fingas

Area Manager

Brocade Communications Systems

13.09.2006

MAKE THE BROCADE CONNECTION



Agenda

- **Brocade po 10 latach istnienia**
- **Ewolucja i dzisiejszy SAN**
- **Przegląd rodziny SilkWormów; FC, FCR, FCIP, iSCSI, FICON**
- **Wsparcie SAN dla koncepcji Disaster Recovery**
- **Software w SAN + licencjonowanie**
- **Wsparcie dla partnerów**
- **Bieżące promocje i nowości**



Brocade

The storage networking pioneer and leader

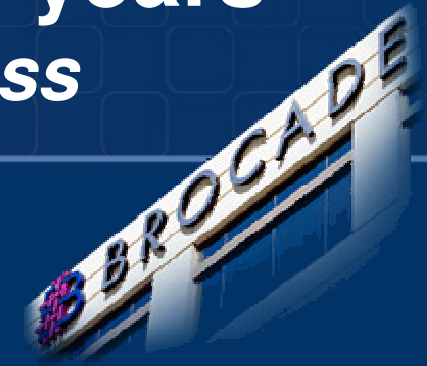


- The storage networking leader:
 - Ten years of pioneering leadership and innovation
 - Proven and tangible cost and management benefits
 - Platform for enterprise backup, disaster recovery, and high-availability solutions
 - Driving industry standards, interoperability, reliability, and partnerships
 - **More than 60%** of all installed storage networks are based on Brocade
- Intelligent solutions and building blocks to drive **lower costs, greater flexibility and better compliance:**
 - SilkWorm: Highest performance, broadest range, common code base
 - Tapestry: Intelligent solutions within and around networked storage
 - Services: Unique in-depth technical expertise and experience



Brocade's SAN Business after 10 years

Strong Foundation for Continued Success



- **Strong Financial Position**

- FY05 revenue of \$574M, >\$182.7M in Q2 FY06
- Healthy product profitability to support investing
- Revenue growth of 7% from Q106 and 26% from Q205
- Generated nearly \$55.7M in operating cash flow in Q106
- \$502M of net cash, compared to \$468M Q205

- **Leadership in all segments of our business**

- Strong demand for **4Gbit/sec technology** in the industry
- The only product family in the industry with a **common operating system**
- **> 11,000** directors installed worldwide supporting mission-critical applications
- **> 2,000** of these directors are 4Gbit/sec SilkWorm 48000
- **56% overall** SAN market share, **36% Director** market share and growing



The Brocade “Connection” Is Pervasive in Data Centers Worldwide

Hundreds of petabytes of shared storage connected...

...to more than *2 million* servers...

...across more than *100,000 SAN fabrics*...

in the data path...

...of *tens of thousands* of applications...

...in the most critical, complex, costly, and secure data centers in the world.



Ewolucja i dzisiejszy SAN

MAKE THE BROCADE CONNECTION



Dotychczasowe korzyści z SAN

Oszczędność czasu i pieniędzy, redukcja ryzyka

Konsolidacja serwerów
i pamięci masowej

1

Wzrost
Utylizacji zasobów

Centralizacja
Zarządzania

2

Uproszczenie
zarządzania

Poprawa
dostępności danych
i wzrost wydajności

3

Redukcja
czasu na backup i
odtworzenie;
Budowa klastrów;
Szybsza praca
krytycznych
aplikacji

Business
Continuity

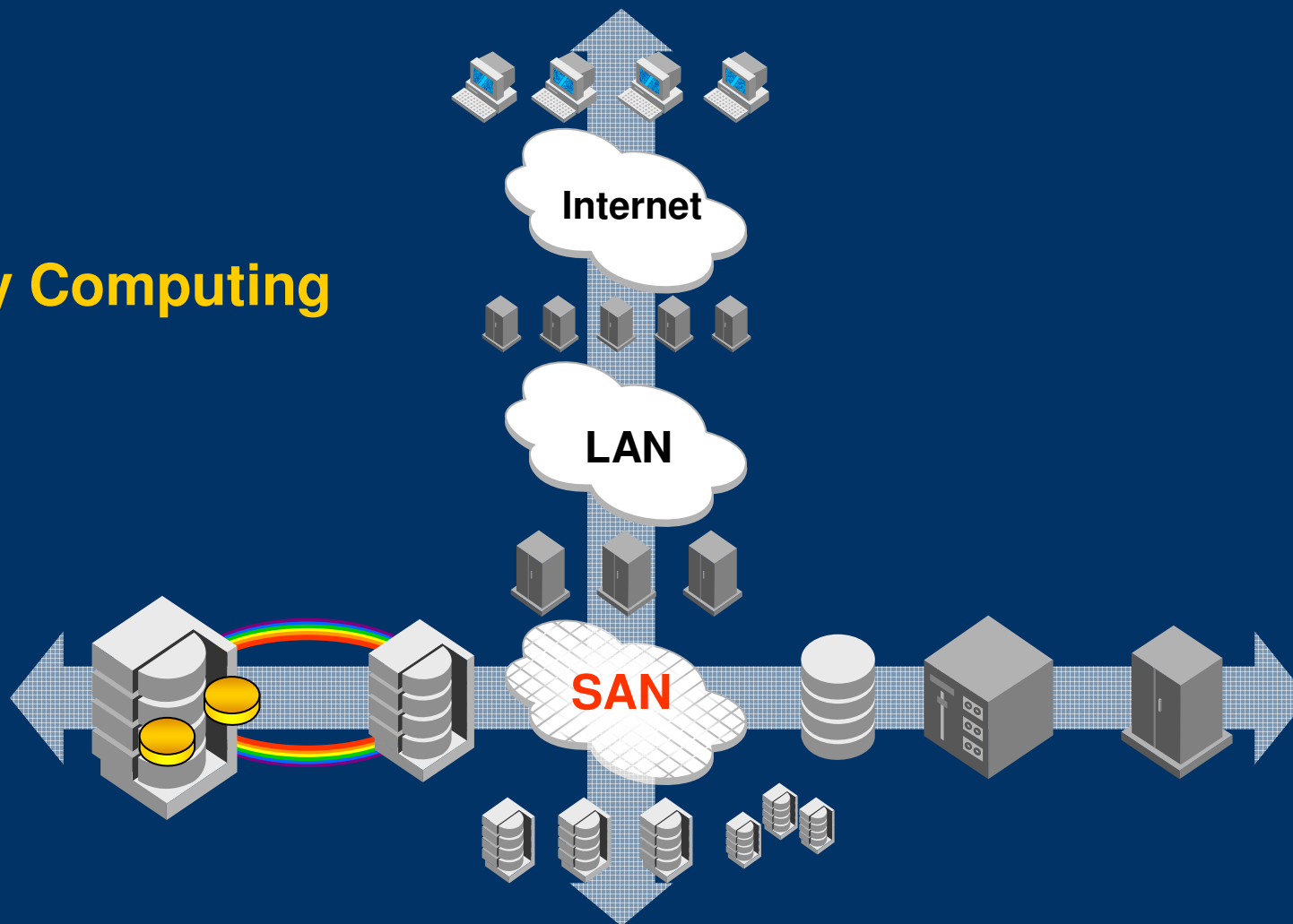
4

Rozciągnięcie
sieci SAN na
duże dystanse;
budowa DR



Sieć SAN znajduje się na przecięciu dwóch Strategicznych Trendów

Utility Computing



Information Lifecycle Management (ILM)



Przyszłość Sieciowej Pamięci Masowej

Nowe obszary zastosowania – nowe korzyści:



Przegląd rodziny SilkWormów; FC, FCR, FCIP, iSCSI, FICON

MAKE THE BROCADE CONNECTION



SilkWorm Family

Embedded to enterprise, common scalable Fabric OS

High Performance



Bladed Server Modules



SilkWorm 200E
8-16 Ports

Certified
Microsoft
SimpleSAN



SilkWorm 4100
16-32 ports



SilkWorm 4900
32-64 ports

2006



SilkWorm 4800
256 ports

FICON
Certified

Low Cost



iSCSI Gateway

2006



iSCSI and
Fibre Channel

2006

WAN and Routing



AP-7420
FCIP/Routing
McDATA
Interop



FCIP/FC Routing

2006



FCIP/FC Routing

2006

Virtualization



AP-7420
Tapestry



Applications
Blade

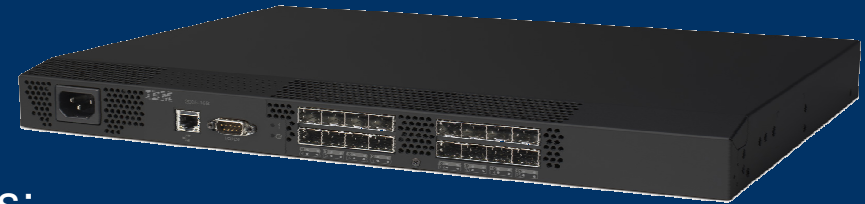


Need a New Class of Small Fibre Channel Switch



Introducing the IBM TotalStorage® 2005-B16

Delivering Brocade value at the right price for small SANs



- Flexibility to meet current and future needs:
 - Range from a standalone 8-port switch to a multi-switch 16-port solution
 - Ports on Demand—“pay as you grow”, start with 8 ports and grow to 16 ports
- Simplified deployment and management:
 - No previous SAN experience needed to use the EZSwitchSetup wizard:
 - Eliminates the need for advanced skills to manage IP addressing or zoning configurations (simplified device discovery and management)
 - GUI and help files in 10 languages
 - Web Tools EZ provides intuitive, graphic management of the switch
- Industry-leading performance:
 - Future-proofs first SANs with new 4 Gbit/sec technology
 - Provides 8, 12, or 16 ports in a 1U enclosure
 - Auto-detecting 4/2/1 Gbit/sec Fibre Channel technology
 - Non-blocking 4 Gbit/sec Fibre Channel performance



Configuration Options



- The IBM TotalStorage® 2005-B16 scales from a standalone 8-port switch to a fully capable 16-port edge switch:
 - Within the same device and with soft upgrades (license keys)
- Flexible configurations:
 - Base switch: 4 Gbit/sec, 8 ports, no E_Port
 - With or without SFPs
 - Upgrade options:
 - Add E_Port to have multiple switches in a fabric
 - Add one 4-port Ports on Demand increment to reach 12 ports
 - Add a second 4-port Ports on Demand increment to reach 16 ports



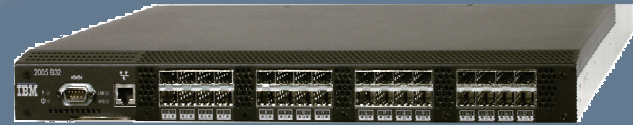
EZSwitchSetup Value Proposition

- Simplifies the installation and maintenance of the IBM TotalStorage® 2005-B16 :
 - EZSwitchSetup is included as standard software
- Provides new SAN users a path to higher value-add SAN architectures:
 - Web Tools and Advanced Zoning are linked to EZSwitchSetup
- Doesn't burden experienced SAN users:
 - Use of EZSwitchSetup is completely optional:
 - Novice users are encouraged to use EZSwitchSetup
 - Experienced users are encouraged to use advanced tools – CLI, Web Tools, Advanced Zoning



IBM 2109 B32 – THE 1st 4Gb switch

Highlights



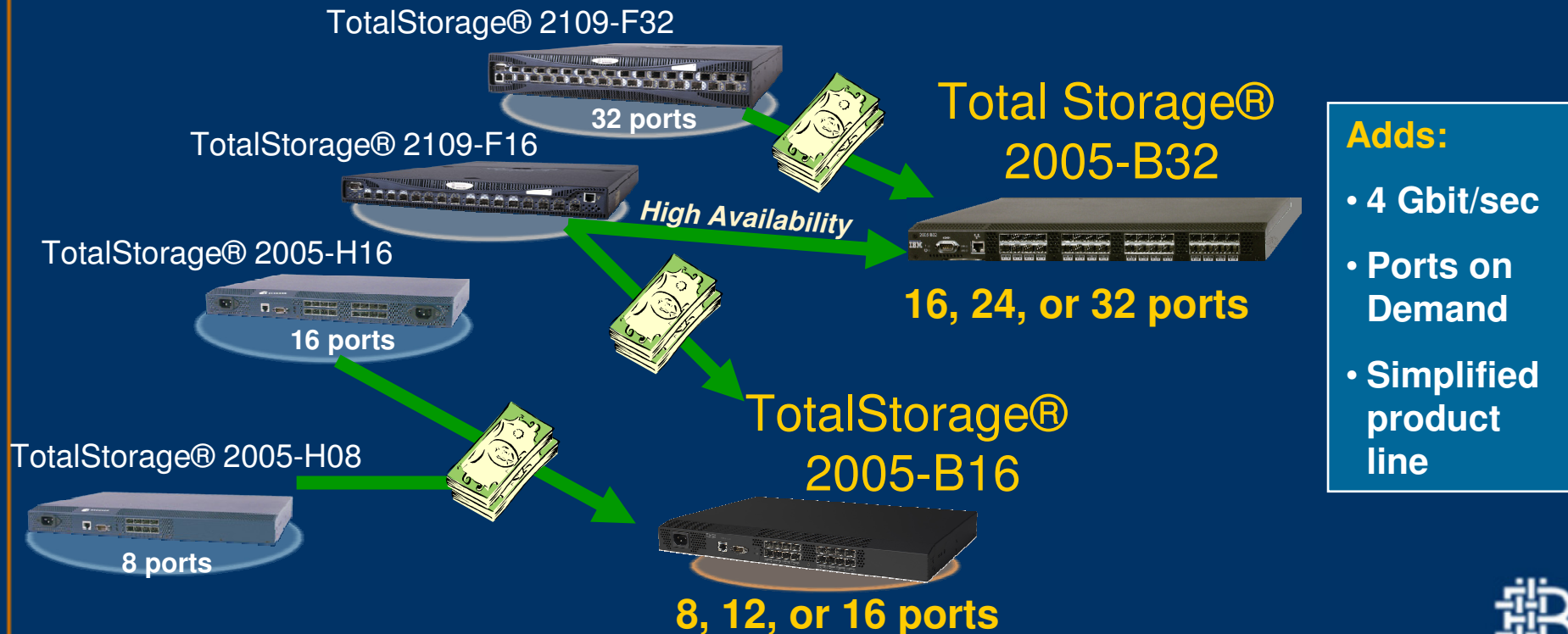
- Highest performance mid-range fabric switch available
 - **First to Market with 4Gb Fibre Channel Switch**
 - **16, 24 or 32 ports-on-demand for instant scalability**
 - **4Gb technology at 2Gb price point = superior ROI and investment protection**
 - **Compatibility across entire Brocade SAN family**
 - HA features – hot code load, hot swap power, cooling
- Ideal for small SAN (core) and large SAN (edge) applications
 - **Ease of use and leverage of full Brocade management/monitoring tools and SAN ecosystem**
 - **FICON/CUP Ready**
 - **ISL Trunking bandwidth up to 32Gbit/sec for core-to-edge**
 - **Extended distance links up to 500km**
 - **Enterprise Availability Features**
 - **Single code stream into the product line from 8 to 128 ports**



More Play, Less Pay

Increased functionality at lower price points

- Transitions:
- TotalStorage® 2005-B32 replaces TotalStorage® 2109-F32
 - TotalStorage® 2005-B16 replaces TotalStorage® 2005-H08/H16
 - TotalStorage® 2109-F16 replaced by TotalStorage® 2005-B32 if high availability is a factor, and by TotalStorage® 2005-B16 if price is the issue

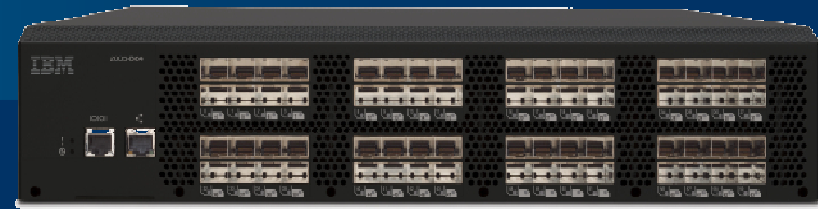


IBM System Storage® SAN64B-2 (2005-B64)

64-port Fibre Channel Switch

Highlights

- Industry-leading port density:
 - 64-port 4 Gbit/sec 2U enterprise switch
- Unmatched performance:
 - 1:1 subscription at 4 Gbit/sec for all 64 ports
- Pay-as-you-grow flexibility:
 - Ports on Demand options for 32, 48, and 64 ports



Key Capabilities

- High-availability features (hot code load; hot-swap power and cooling)
- Advanced performance functionality:
 - ISL Trunking with 32 Gbit/sec trunks (8 ports at 4 Gbit/sec)
 - Dynamic Path Selection, end-to-end performance monitoring
- Long-distance support:
 - 500 km at 1 Gbit/sec, 250 km at 2 Gbit/sec, 100 km at 4 Gbit/sec
 - Trunks: 250 km at 4 Gbit/sec (2 ports x 2 Gbit/sec)
100 km at 10 Gbit/sec (5 ports x 2 Gbit/sec)
- Common Fabric OS with existing entry-to-enterprise SilkWorm platforms

Ideal for:

- Enterprise edge consolidation
- Dual-fabric core switches



Optimal Solution for SAN Consolidation

64 user ports

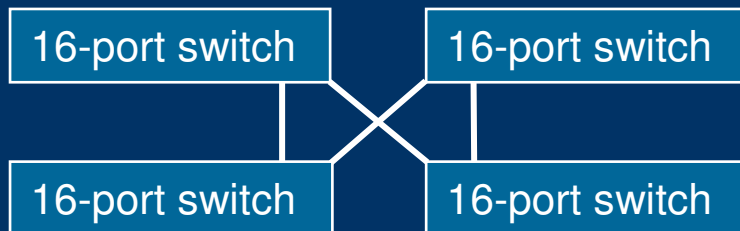


- **Performance:**
 - Any-to-any guaranteed
 - **Management:**
 - Fewer devices to manage
 - **Reliability:**
 - No SFPs or cables required for ISLs
- **Efficiency:**
 - Fewer total ports required to achieve 64 ports for connectivity
 - Less rack space for the same performance
 - Higher total bandwidth

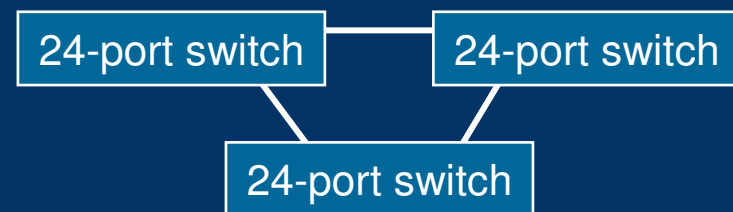
$32 + 32 - 4 \text{ ISL ports} = 60 \text{ user ports}$



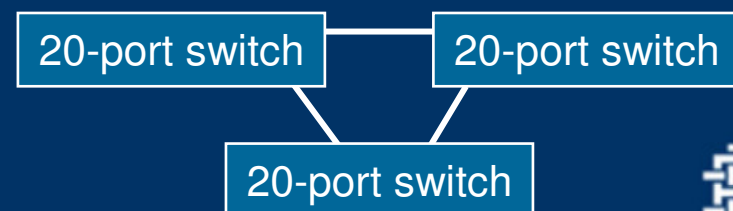
$(4 \times 16) - 8 \text{ ISL ports} = 56 \text{ user ports}$



$(3 \times 24) - 6 \text{ ISL ports} = 66 \text{ user ports}$



$(3 \times 20) - 6 \text{ ISL ports} = 54 \text{ user ports}$



Feature and Benefits of B64 Summary

Feature	Benefits
64 non-blocking ports	Ideal for infrastructure simplification
Hot code activation	Enterprise-ready
Ports on Demand feature	Pay-as-you-grow scalability
Uses existing Fabric OS and hardware	Well known/stable platform and interoperability with older software
FICON/CUP-ready	Ideal for Series z tape environments
Competitive TCO	Lower cost of ownership than directors
Simple single-box concept	Fabric growth with switch architecture
Fewer ports used for ISLs	Optimized price/port ratio



TotalStorage® 2109-M48 Gbit/sec Director

New High-End Extension to the SilkWorm Family

Product Highlights:

- 256 ports in a single domain director
 - 4 Gbit/sec 16- and 32-port blades
 - FC, FC Routing, FCIP, iSCSI, FICON
- 1/2/4 Gbit/sec auto-sensing technology

Unique and Leading Capabilities:

- Most efficient director, delivers significant TCO savings
- Enhanced ISL Trunking, up to 32Gbit/sec with 8 links
- Dynamic Path Selection for optimizing fabric-wide performance and load balancing
- Extended Fabrics for business continuance operations
 - Full 4 Gbit/sec performance up to 100km
 - Trunking 3 ISLs 12Gbit/sec @ 100km, 6Gbit /sec @ 250km
- FICON/CUP intermix FICON/FCP on port-by-port basis



Ideal for:

- Mission-critical cores in core-edge SANs
- High density SAN consolidation
- High port count stand-alone director



TotalStorage® 2109-M48 Use Cases

- Deployment
 - Mission-critical core and high-density edge in core-edge SANs
 - High port count stand-alone director
 - For open systems and/or IBM zSeries server environments
- Applications
 - High availability
 - 5-nines infrastructure for servers and storage to support application uptime
 - Storage consolidation
 - Shared infrastructure to increase utilization and lower management expenses
 - Accelerated data backup
 - High-speed network to reduce backup duration and shirk backup windows
 - Business continuance:
 - Foundation for automatic transfers of data to remote sites for disaster recovery



Why are customers selecting Brocade Directors for FICON today?

- **Investment Protection**
 - Brocade offers the ONLY 4Gb FICON director now (Silkworm 48000)
 - FICON/CUP certification from IBM for 48000 & 4100
 - Support for NPIV
- **Superior Performance**
 - Central Channel Memory Architecture, Virtual Channels
- **Best Security&Flexibility in Intermix Mode**
 - Hardware Enforced Zoning, Intermix mode supported on port-by-port level
- **Best Performance&Manageability in Cascaded Mode**
 - Self-managing trunks: 32 Gb/sec (8 x 4 Gb trunk in cascaded mode)
- **Highest Availability (proven in Amadeus TPF stress-testing)**
 - e.g. Zero-second CP failover
- **Typically best Price/Performance**



TotalStorage® 2109-M48 Leads the Market in TCO

Efficiency Delivers Significant Savings vs. Competition



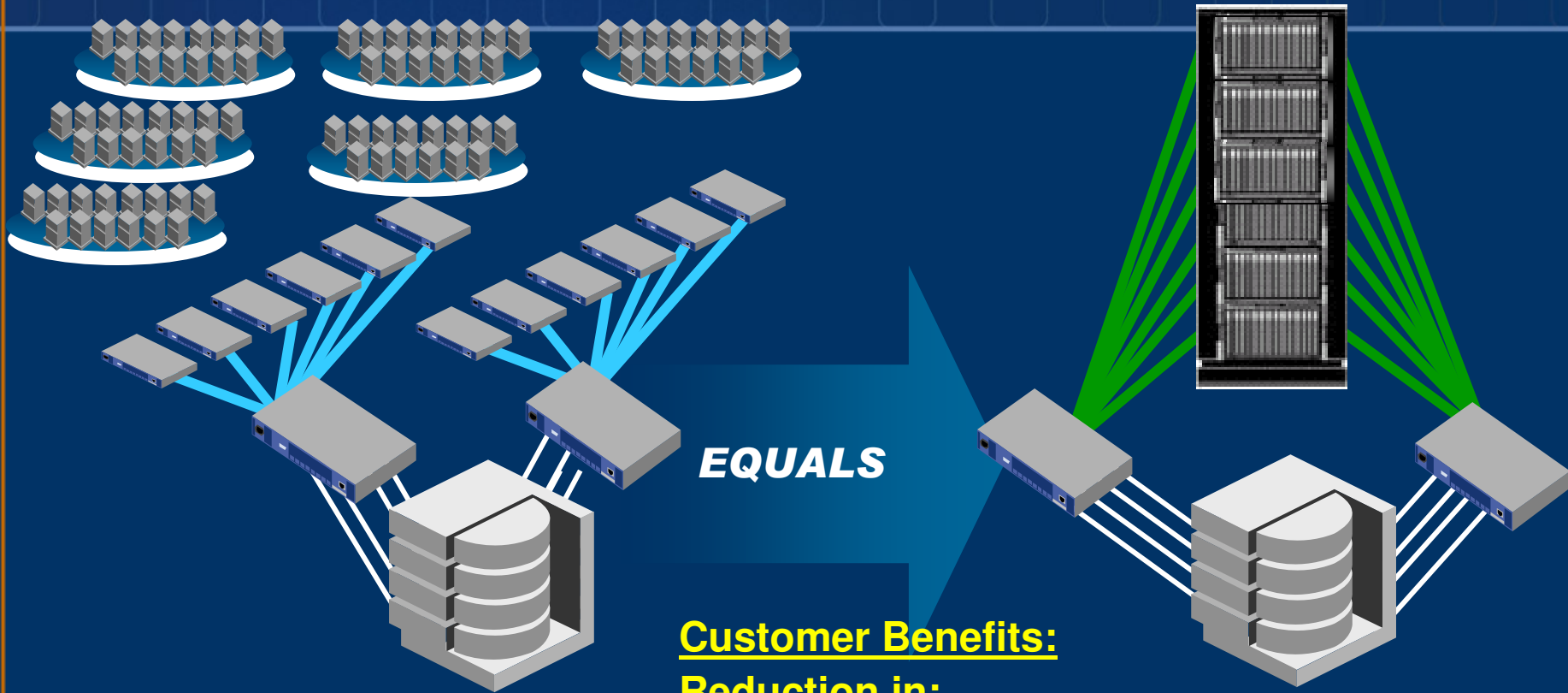
	<i>McDATA i10K</i>	<i>Cisco MDS 9509</i>	TotalStorage® 2109-M48	<i>Brocade Advantage</i>
Power (W)	2500	2196	915	Up to 3 times more efficient, >\$8,500 savings for each unit over 3-year period
Cooling (BTU)	8535	7497	3107	
Watts / Port	9.8	9.4	3.6	
Power / Gb BW	4.88	4.68	<u>0.89</u>	

With 4Gbit/sec, Brocade is the only vendor delivering a Gbit of bandwidth <1W



The Power of Integration

SAN & Server Simplification in Action



EQUALS

Customer Benefits:

Reduction in:

Cost

Complexity

Space

Power

OpEx



IBM SAN Switch Modules for IBM BladeCenter®

Highlights

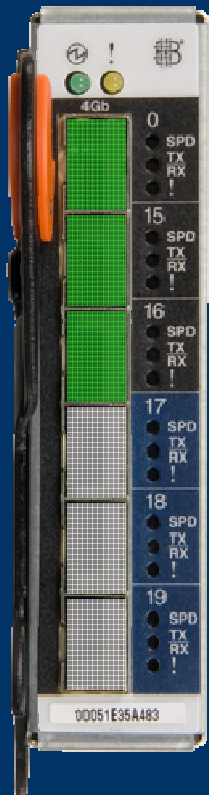
- *Brocade's industry leading SAN technology and IBM's most flexible compute architecture IBM BladeCenter*
- **2-Gbit/sec Entry and Enterprise versions**
 - 14 internal and 2 external
- **4-Gbit/sec 10 and 20-Port versions**
 - 14 internal and 6 external

Unique capabilities

- **High Availability Features:**
 - Dual, redundant, hot-swap switch configuration
 - Hot Code Activation
 - Fabric Watch for proactive error capture
- **Superior Performance Features:**
 - ISL Trunking and Dynamic Path Selection

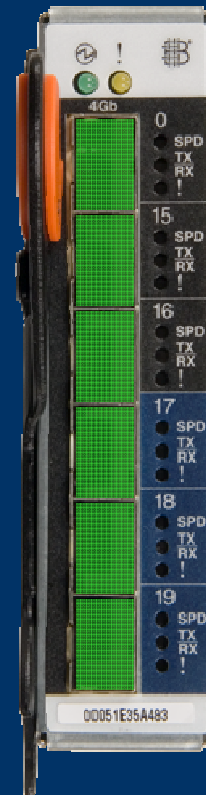


Comparing IBM 4Gbit/sec SAN Switch Models



10-Port Model (32R1813)

- 7 Internal Ports active
 - Server Bays 1-7
 - Copper SERDES
 - 2 or 4 Gbit/sec auto-detect
 - F-Port
- 3 External Ports active
 - Ports 0,15,16
 - SFP Media
 - 1,2,4 Gbit/sec Auto-detect
 - U-Ports
- Licenses include:
Full Fabric, WebTools, Zoning



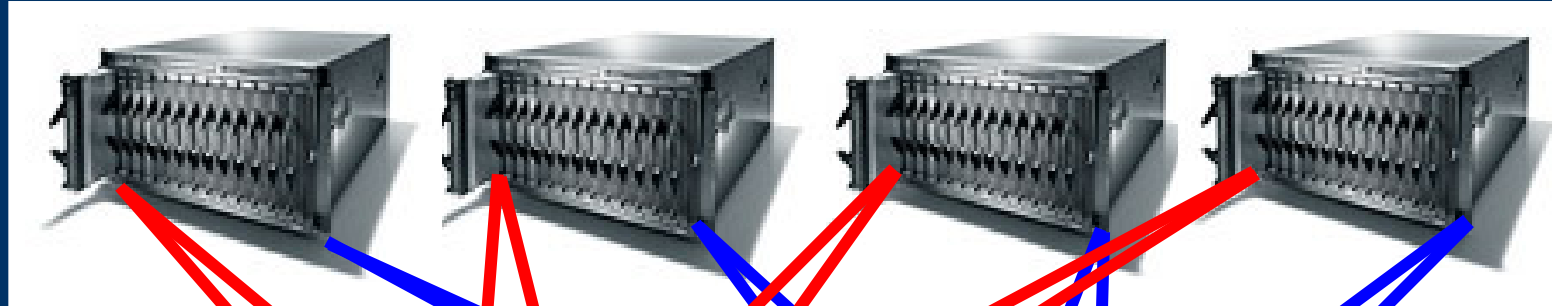
20-Port Model (32R1812)

- 14 Internal Ports active
 - Server Bays 1-14
 - Copper SERDES
 - 2 or 4 Gbit/sec auto-detect
 - F-Port
- 6 External Ports active
 - Ports 0,15-19
 - SFP Media
 - 1,2,4 Gbit/sec Auto-detect
 - U-Ports
- Licenses include:
Full Fabric, WebTools, Zoning & 10-Port Upgrade

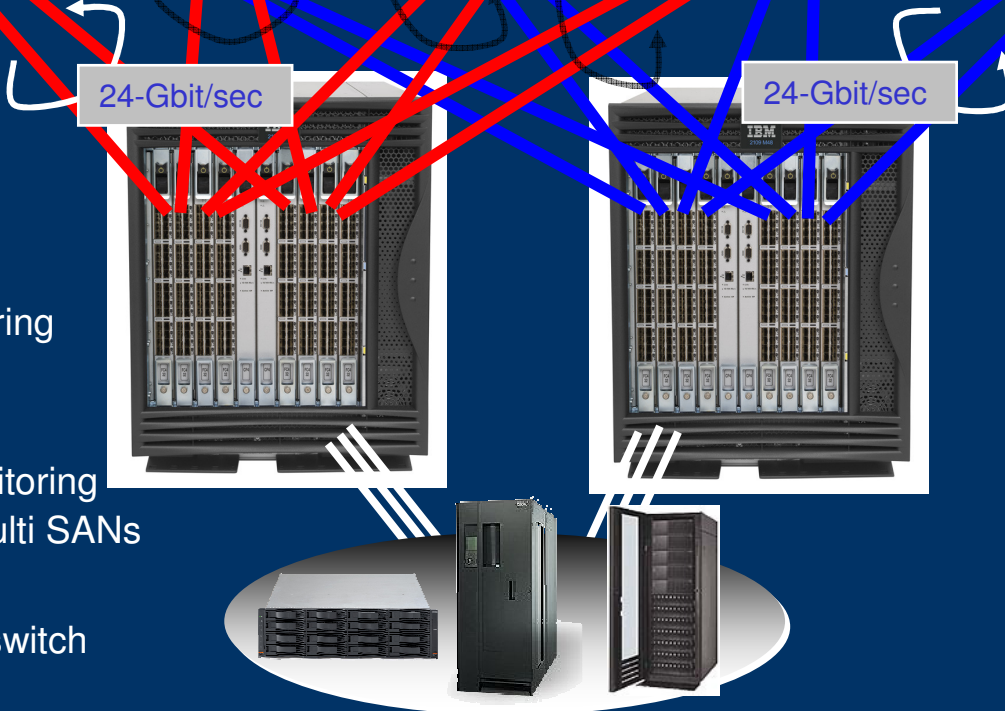


Superior SAN Scalability

Build Enterprise BladeCenter Data Centers



- Build Large SANs with Brocade
 - 50+ Domains scalability
 - 20+ greater than competition
 - Proven in Scalability labs
- High Availability SAN
 - Dual SAN design
 - Fabric Watch health monitoring
 - Hot Code Load
- Simplified Management
 - Trunking simplifies link monitoring
 - Fabric Manager for large/multi SANs
- Best Performance
 - 12Gbit/sec Trunks to Core switch



Wsparcie SAN dla rozwiązań Disaster Recovery

MAKE THE BROCADE CONNECTION



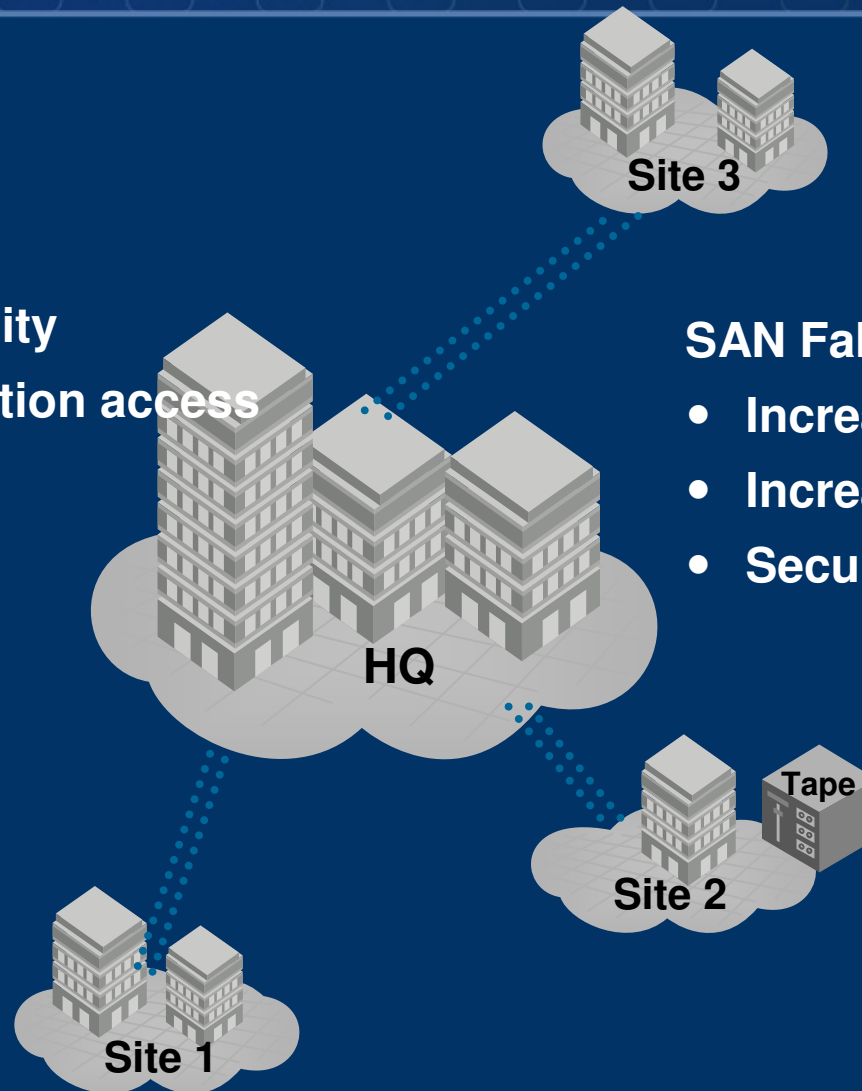
Business Continuity Solutions

Benefits:

- Asset Protection
- Data protection
- Business Continuity
- Improved information access

Methods:

- Mirroring
- Clustering
- Backup/restore
- Redundancy
- Remote Sites

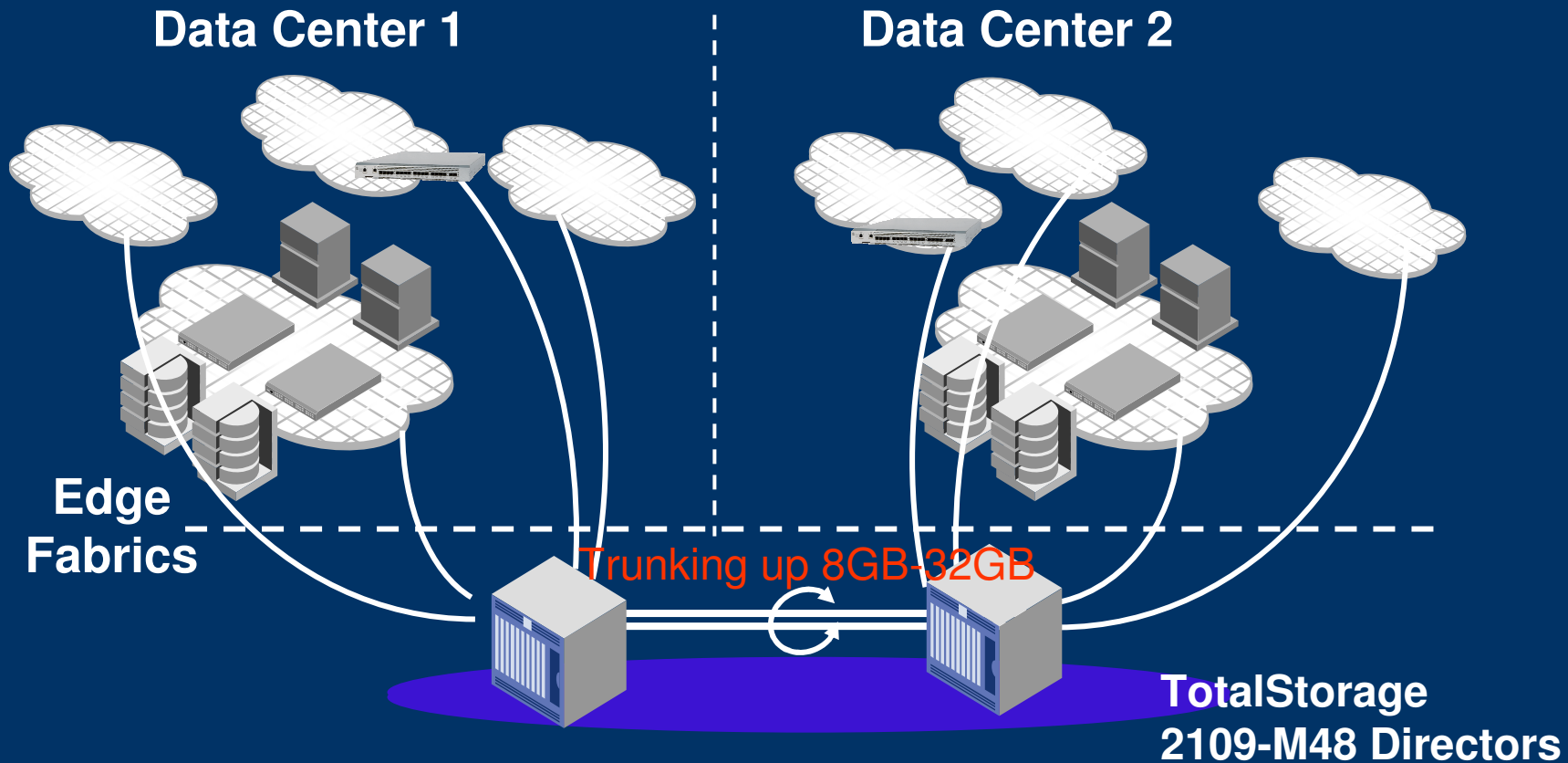


SAN Fabric Demands:

- Increased distance
- Increased performance
- Secure Connection



Extend your Data Center Brocade can up to 32 GB with Trunking between the Data Center FC or use IP Connections



Extended SANs

- DWDM, CWDM, dark fiber
- FCIP



IBM TotalStorage® 2005-R18, FR4-18i Blade 4GB FC to FC Routing Blade+External Router

Product Highlights

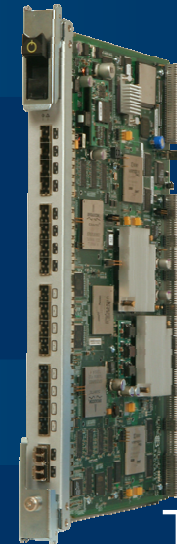
- Unified SAN architecture
- Dual GigE FCIP ports for connecting to IP networks
- 1, 2, or 4 Gbit/sec Fibre Channel routing ports to connect Fibre Channel SAN fabrics or storage devices

Key Differentiators

- **Superior performance:**
 - Industry-first 4 Gbit/sec Fibre Channel routing
 - Optimizations for high-latency, low-bandwidth WANs
 - Line-rate performance for high-speed WANs
 - Hardware-based compression
- **Efficiency:**
 - Efficient encapsulation of Fibre Channel into IP
- **High scalability:**
 - 16 4 Gbit/sec Fibre Channel routing ports, 2 GigE FCIP ports
 - 8 FCIP tunnels per port



TotalStorage R18
Switch



TotalStorage FR4-18i
M48 Director Blade

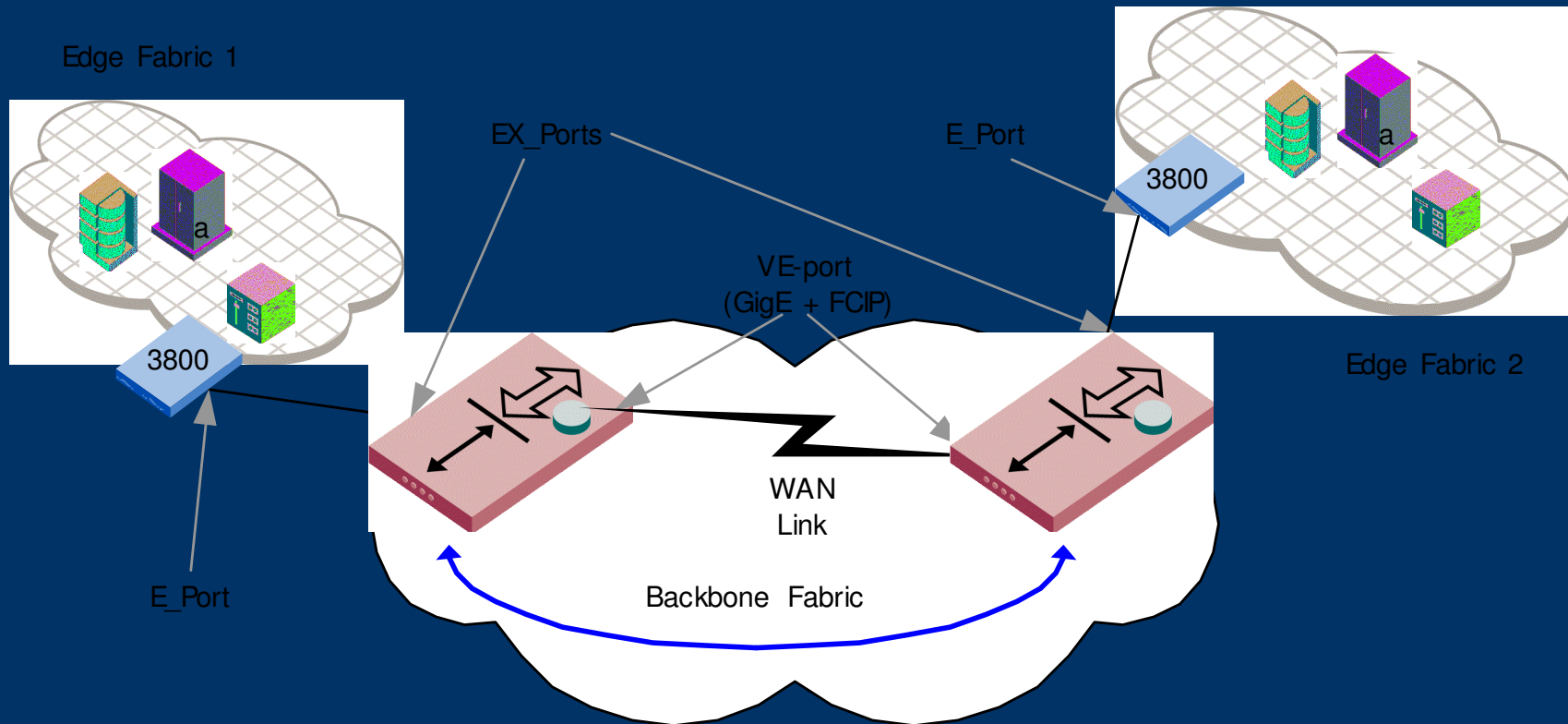
Ideal for:

- Efficiently connecting large SANs without merging
- Implementing SAN services across data networks



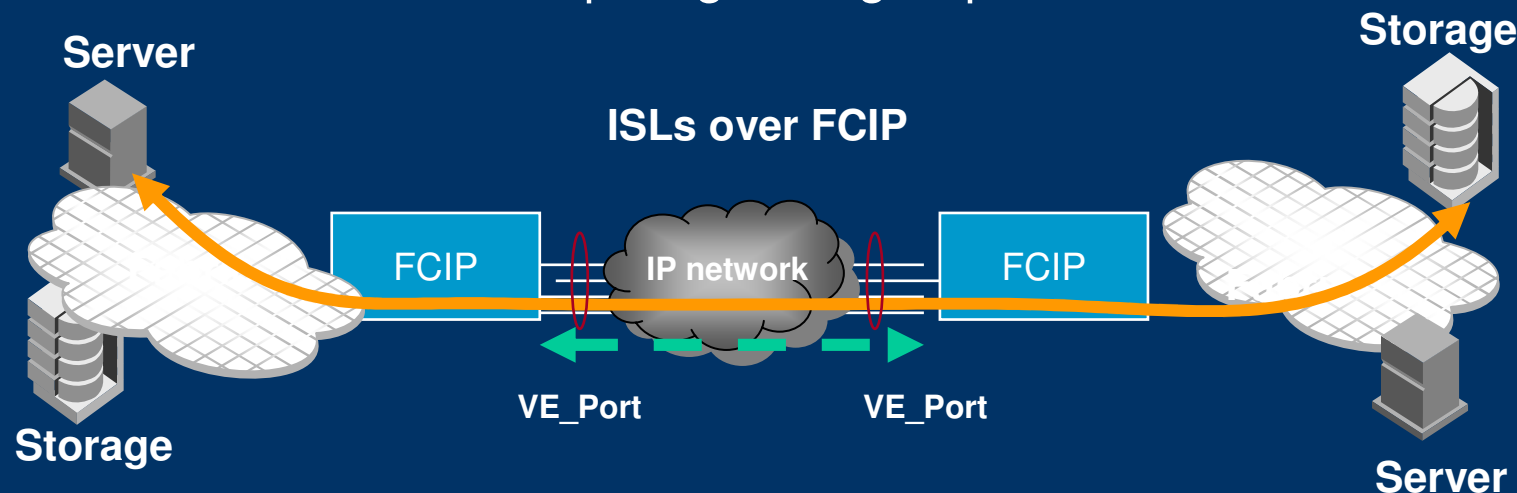
Fabric Isolation: Fibre Channel Routing and FCIP

- Integrate Fibre Channel routing services with FCIP
- Isolate WAN link failures and reconfiguration propagation across fabrics



FCIP Implementation

- FCIP is a tunneling protocol to transport Fibre Channel ISL traffic
- Uses a guaranteed, in-order delivery transport in the IP network
- From the fabric view, an FCIP link is an ISL transporting all Fibre Channel control and data frames between switches
- The IP network and protocols are invisible to the fabric
- But, special challenges exist in transporting Fibre Channel traffic over the IP WAN, requiring storage-optimized features in FCIP



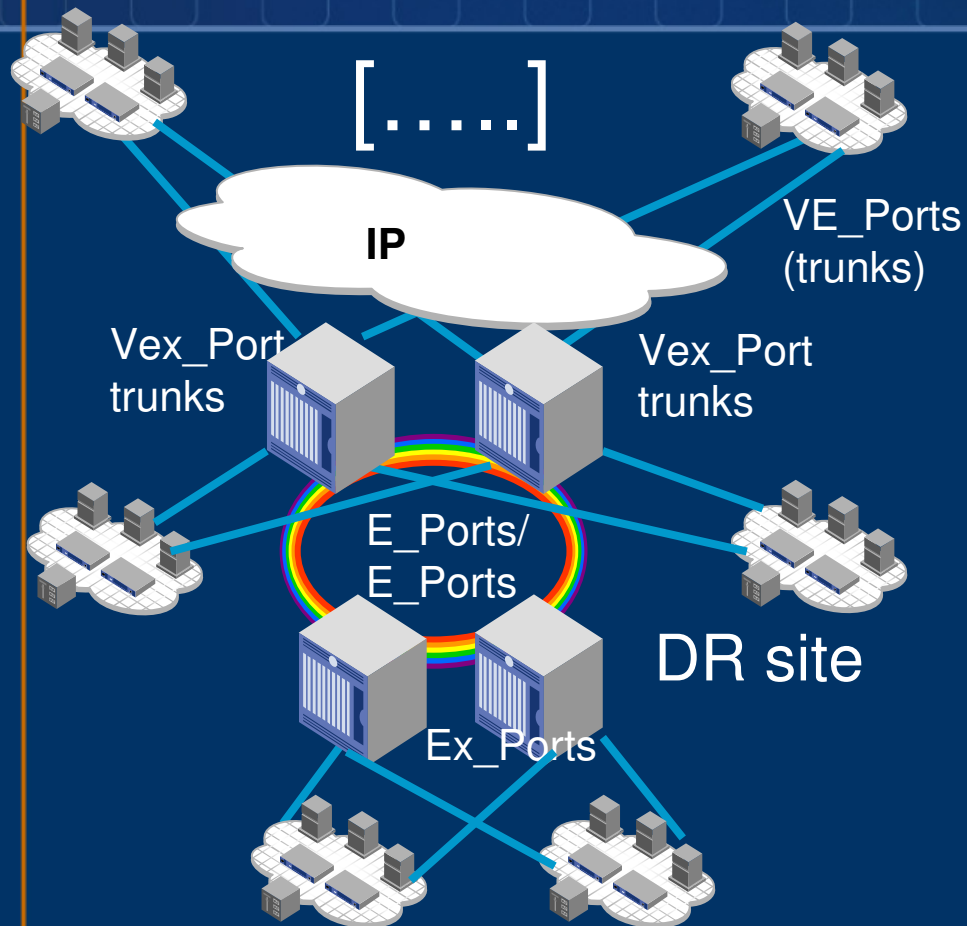
FCIP Feature Set

- Eight virtual FCIP tunnels per Gigabit Ethernet port:
 - Enables economic fan-in to a central site or multiple virtual FCIP links between two sites
- Traffic shaping per FCIP tunnel:
 - Accommodates low bandwidth and enables QoS on a per-tunnel basis
- Hardware compression:
 - Maximizes throughput over WAN links without performance degradation
- Line-rate performance:
 - Maximizes performance in expensive high-speed networks



Use Case

Disaster recovery for distributed sites



Key characteristics:

- One main site, many remote sites

Typical industries:

- Large retail
- Large insurance
- Distributed manufacturing
- Diversified financial

Headquarters and disaster recovery sites with redundant directors, each with a TotalStorage FR4-18i blade



Software Licencjonowanie

MAKE THE BROCADE CONNECTION



Brocade's *Condor* ASIC: Five Benefits

1. 4 Gbit/sec Fibre Channel system on a chip:
 - Lowers overall system power requirements
2. Enhanced long-distance support with 1024 buffer credits:
 - More buffer credits equals higher performance over distance
3. Dynamic Path Selection:
 - Improves performance of networks prone to ISL congestion
4. Hardware support for up to 16 virtual channels:
 - Prevents ISL blocking and balances performance
5. 8-port Trunking:
 - Industry-leading 32 Gbit/sec ISLs between switches



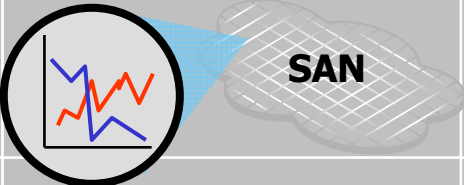



Brocade Enhances SAN Solutions

Unique Advanced Fabric Services

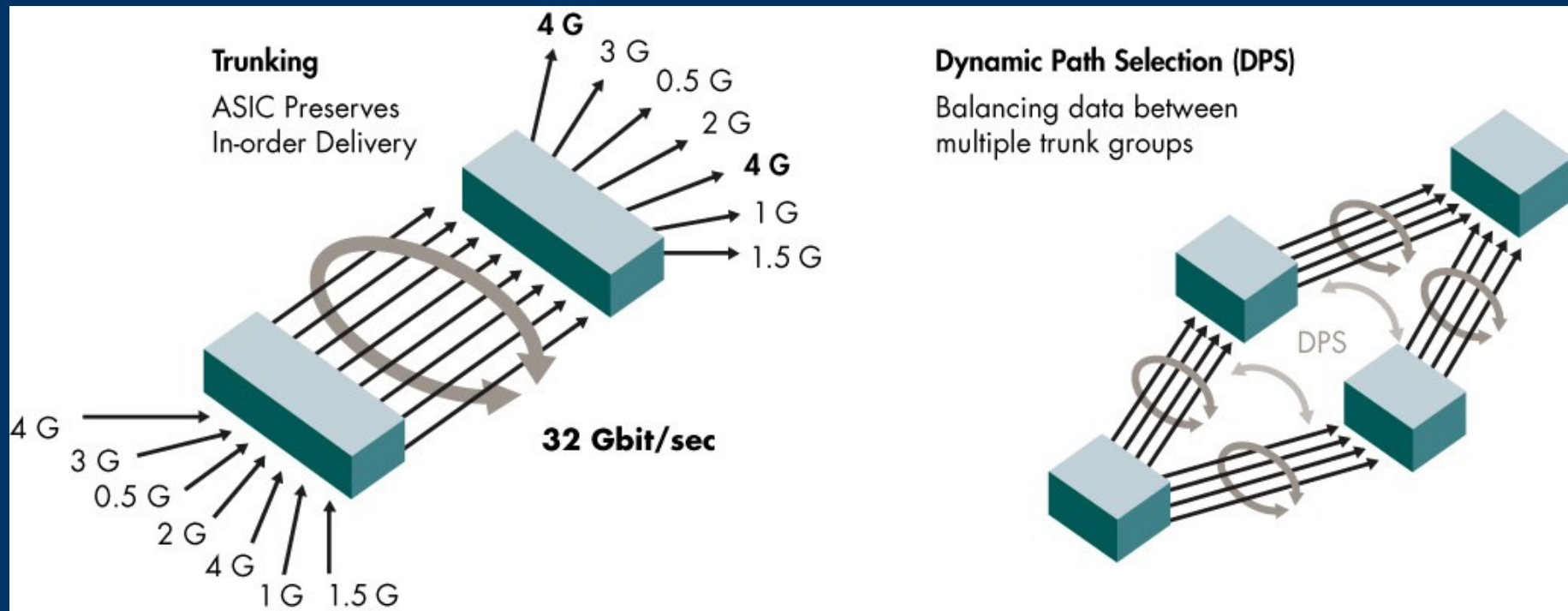


All Brocade products offer these intelligent SAN features:

Feature	Description	SAN Benefits	
Fabric Watch	Monitoring and alerting of key SAN statistics such as perf, error, security		<ul style="list-style-type: none"> Enhance Business Continuity Improve application availability Alert admin of marginal/hard errors
ISL Trunking	Connect Switches with up to 32Gb/S performance optimized trunks		<ul style="list-style-type: none"> Enhance Infrastructure Simplification Optimize SAN traffic performance Increase availability of data access
Adv Perf Monitoring	Highly granular SAN perf monitoring to differentiate traffic between devices		<ul style="list-style-type: none"> Enhance performance monitoring Simplify capacity planning Enable bill-back capabilities
Advanced Security	Robust encryption, authentication and authorization SAN policies		<ul style="list-style-type: none"> Enhance Business Continuity Protect SAN from hackers Reduce user errors

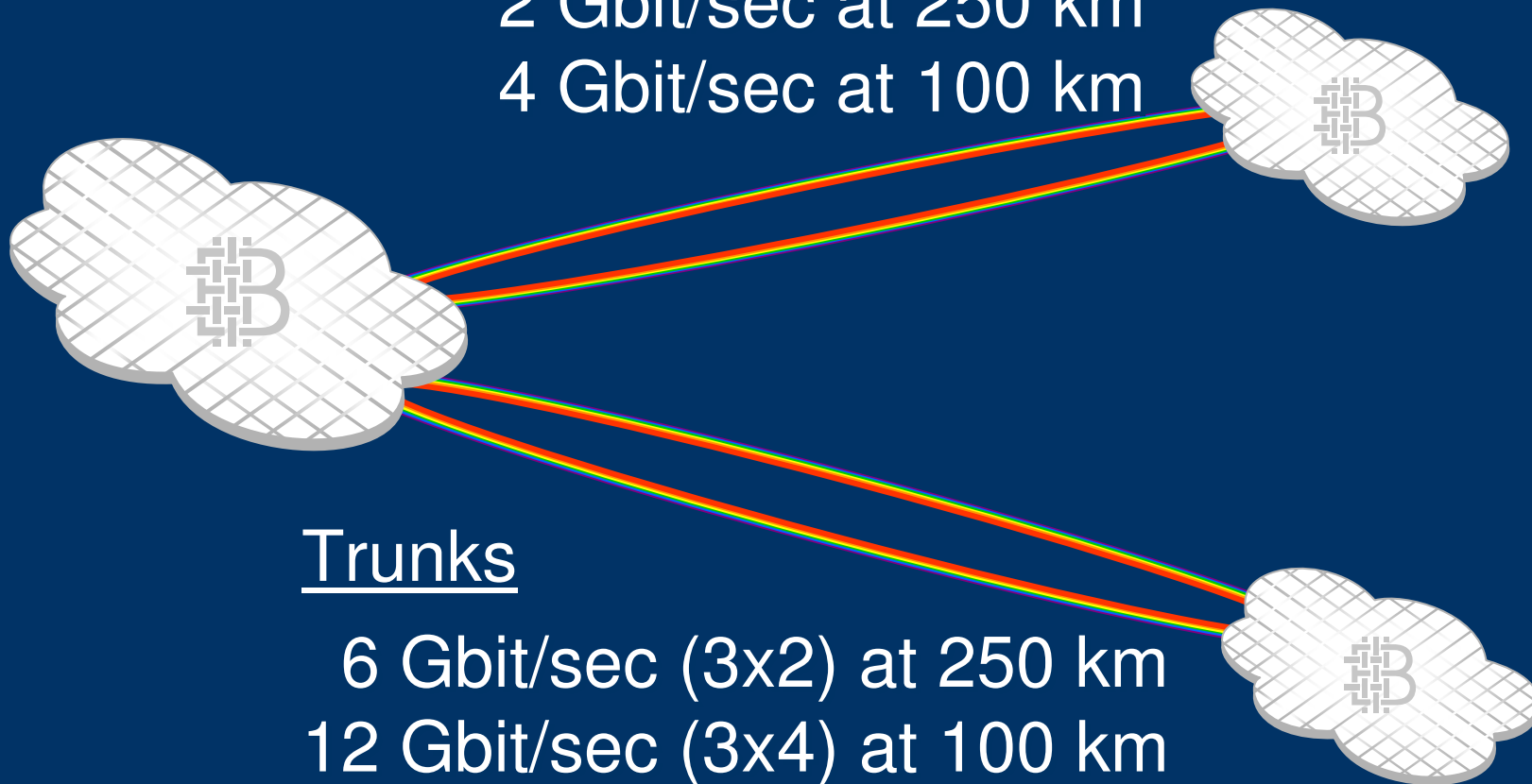


Dynamic Path Selection



Extended Distance Support License – Extended Fabrics

Ports 1 Gbit/sec at 500 km
2 Gbit/sec at 250 km
4 Gbit/sec at 100 km

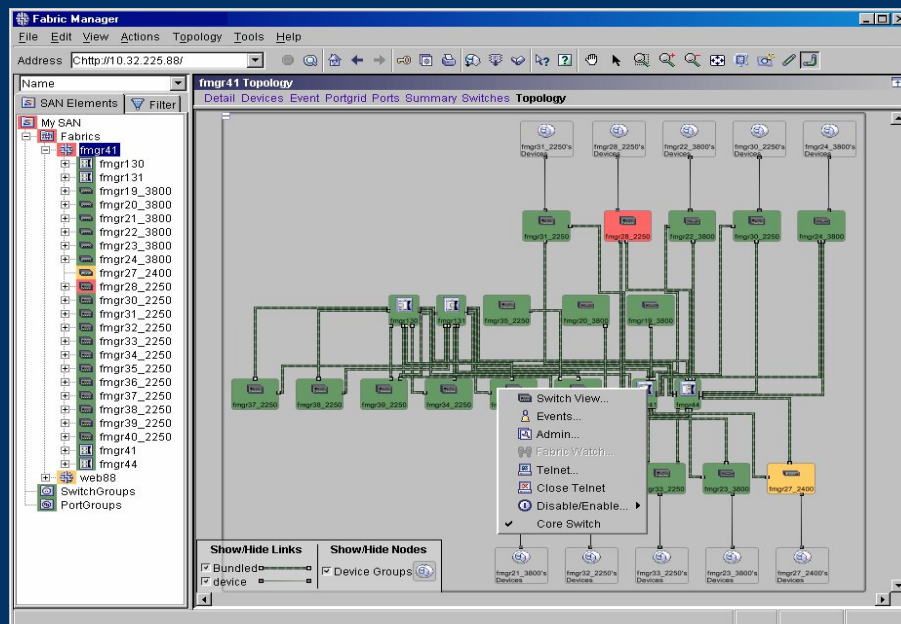


Trunks

6 Gbit/sec (3x2) at 250 km
12 Gbit/sec (3x4) at 100 km



Fabric Manager 5.1 Today



- Single point of management for Brocade SANs
- Discovery and aggregation of management data
- Point-and-click implementation for complex tasks
- Automation of repetitive tasks
- Automated monitoring of fabrics for user defined changes
- SAN-wide historical performance monitoring



Wsparcie dla użytkowników Technologii Brocade

MAKE THE BROCADE CONNECTION



Usługi edukacyjne Brocade

Zaawansowane szkolenia prowadzone przez ekspertów

- Wartościowy i trudny (!) program certyfikacyjny
- Sale szkoleniowe i laboratoria m.in. w San Jose i Genewie
- Wyśmienite wyposażenie laboratoriów, w tym SAN w Centrali oferujący zdalny całodobowy dostęp z dowolnego miejsca na świecie
- Światowa sieć certyfikowanych partnerów edukacyjnych
- Możliwe **szkolenia w siedzibie** użytkownika
- Szkolenia multimedialne: filmy, symulacje i interaktywne testy
- **Darmowe dodatki: szkolenia www, praktyczne poradniki i testy**

The collage features several key elements: a classroom setting with a man raising his hand; a website banner for 'BCFP in a Nutshell' with the text 'get your SAN training from the experts'; a screenshot of a Microsoft Internet Explorer browser window displaying the 'FC101 Overview' page; a video player showing a woman speaking; a technical diagram titled 'Reasons, Benefits & Components' for FC SAN; and a photograph of server racks in a data center. The Brocade logo is visible in the bottom right corner of the collage.

Poziomy Certyfikacji w Brocade

Kształcenie i certyfikacja ekspertów SAN



Brocade Certified Fabric Professional (BCFP)

Ten poziom certyfikacji wskazuje na biegłą znajomość produktów Brocade SilkWorm i głęboką wiedzę z teorii Fibre Channel.



Brocade Certified SAN Designer (BCSD)

Ten poziom certyfikacji świadczy o dogłębnej znajomości koncepcji i zasad budowy sieci SAN od podstawowych komponentów poprzez integrację z aplikacjami, aż do wykorzystania najnowszych i zaawansowanych komponentów pamięci masowej.



Brocade Certified SAN Manager (BCSM)

Ten poziom certyfikacji świadczy o nieprzeciętnie szczegółowej wiedzy z zakresu administracji produktami Brocade SilkWorm i zarządzania całym sieciami SAN (kandydat musi mieć certyfikat BCFP).



Unikalne programy dla partnerów Brocade Portal Partner Network oraz gazetka Partner Newsletter

Portal dla zarejestrowanych partnerów

home www.brocade.com search log out

BROCADE Brocade Partner Network

For Technical Professionals For Sales Professionals For Marketing Professionals Partnering With Brocade

Welcome, Elite Fabric Partner

HIGHLIGHTS

- Interactive Software Training
- Partner Flash Archive
- Compatibility Matrix
- 50% Off Brocade Education
- Product Manuals
- Knowledge Base

FOR YOUR CUSTOMERS

- Brocade Offerings
- Events
- Brocade Connect
- SAN Info Center
- More...

WHAT'S NEW

- End of Life Notice -- SilkWorm 3200VL and 3800VL EOL Notification Available!
- End of Life Notice -- Fabric OS v2.0.0.0 EOL Notification Available!
- Fabric Watch Guidelines - Now Available!

legal privacy feedback change password

PARTNER NEWS FLASH

The Monthly eNewsletter for Brocade Master Resellers and Resellers
August 11, 2004

In This Issue:

Technical Corner

- New Technical Documents - Now Available!

Announcements

- SilkWorm 3200VL and 3800VL EOL Notification

Product Information

- Brocade Director Investment Protection Plan
- SilkWorm Multiprotocol Router Materials Available
- Director Comparison Presentation - Updated!

Training

- Multiprotocol Router Web-Based Training Track - New!
- Blended Learning Solution (BLS) Classes

Programs

- "What's Your SAN Plan" Technical Seminars and Training Events

Much of the content referenced in the Partner News Flash is available through the Brocade Partner Network. If you are not already a member, [Register Today](#) and gain access to partner-specific materials.

QUICK LINKS

News

- Partner Ranks Brocade "Leader" in Latest Magic Quadrant
- Compliance Wreaks Havoc on IT Infrastructures

Featured Customer

- Brocade Wins with Dassault Aviation

Brocade Events Calendar

- North America

Brocade Education Services

- Training
- Certification

FREE Technical Seminars
(From Sept. 14 thru Nov. 18)

[Learn More](#)

Technical Corner [Back to Top](#)

New Technical Documents - Now Available!

The following new technical documents are now available to Channel Partners:

home

BROCADE

For Technical Professionals For Sales Professionals For Marketing Professionals

Home > For Marketing Professionals > Elite MDF >

Elite MDF

ENABLING YOU TO EFFECTIVELY MARKET, SELL, AND SUPPORT BROCADE SOLUTIONS

Welcome To The Brocade Elite MDF Program!

Brocade strives to provide our Elite partners with comprehensive tools and support to enable you to effectively market, sell, and support Brocade SAN solutions. This tool is designed to make it easy for you to use your MDF and to obtain information about your MDF accounts.

[CLICK HERE FOR THE MDF TOOL](#)

- [Special MDF Equipment Offer! -- Now through 10/31/04](#)
- [Elite Fabric Partner MDF Guidelines](#)
- [Elite Distributor MDF Guidelines](#)
- [Brocade 2004 MDF Program Quick Reference](#)
- [MDF Tool Training Document](#)

Note: The Elite MDF tool is only available to specific contacts at your company that manage your Marketing Development Funds (MDF). If you receive an error when you click on the link for the Elite MDF tool, you do not have access to the tool.

Partner Flash Newsletter



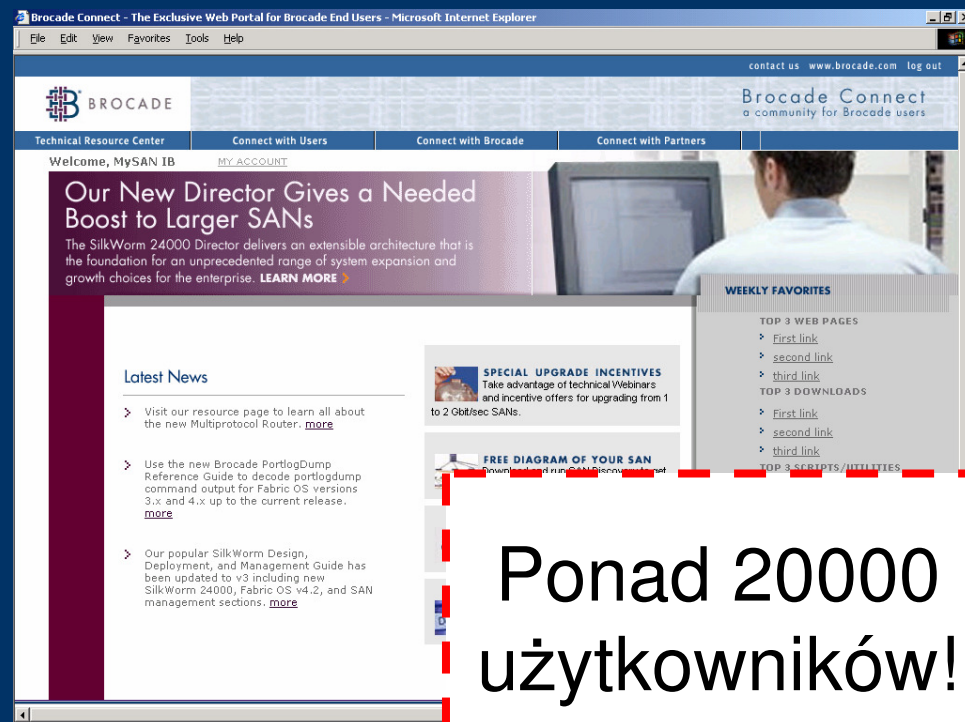
Brocade Connect

Portal www dla społeczności użytkowników Brocade

Miejsce „spotkań” administratorów SAN. Techniczne wskazówki i narzędzia dla optymalizacji produktywności.

DARMOWY dostęp do:

- Skrypty i narzędzia od Brocade'a oraz innych użytkowników SAN
- Fora dyskusyjne
- Dokumentacje techniczne
- „Release notes”
- Ewaluacyjne wersje oprogramowania
- Powiadomienia o możliwych zagrożeniach i zaleceniach
- I jeszcze więcej!



Rejestracja poprzez www.brocade.com/jointheclub

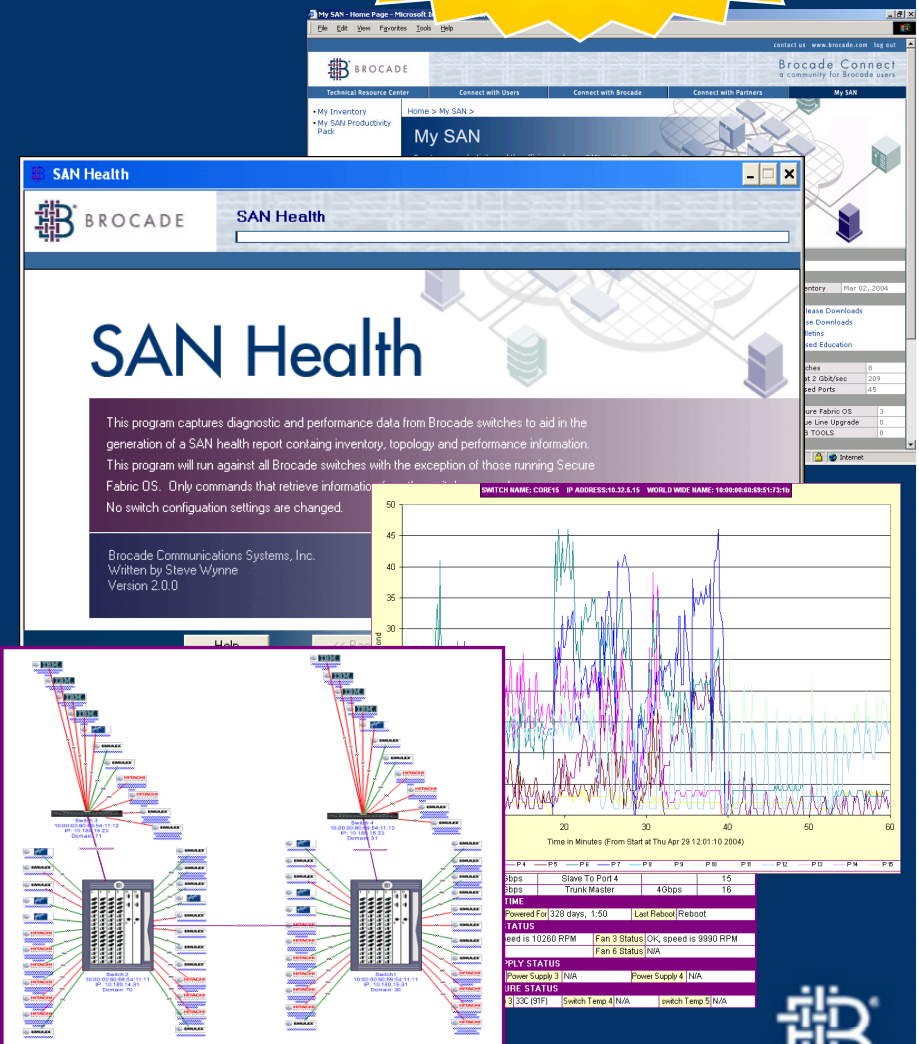


Narzędzie Brocade SAN Health

Szybka, prosta i bogata analiza SAN

Dostępna w sieciach
Brocade Connect i
Brocade Partner!

- SAN Health umożliwia prosty audyt i analizę sieci SAN:
 - Inwentaryzacja przełączników, wersji firmware'u i architektury sieci fabric
 - Pomiar wydajności i sprawdzenie poprawności pracy plus wskazanie błędów
 - Wygenerowanie szczegółowego raportu (inwentaryzacja) z rekomendacjami, wykresami wydajności i diagramem Visio



Zamów **darmowe** CD
lub **ściągnij** z sieci!

Bieżące promocje i nowości

MAKE THE BROCADE CONNECTION





IBM Programs Summary Q4 2006

“AUGUST 2006 ISSUE”

MAKE THE BROCADE CONNECTION



IBM/Brocade Sales Programs

Corporate and NA Specific

- *M48 Director “Power UP” Program (thru 9/30/06)*
Requires the customer to buy (1) M48 with 64 ports. Subsequent blade purchases for that system will be treated as a buy 1, get 1 free
RPQ# 8S0721 (16-port Blade) & 8S0720 (32-port Blade)
(Form completed by IBM or BP, sent to IBM & Brocade)
- *B32 Switch “Top Off” Program (thru 9/30/06)*
The customer buys (1) B32 with 16 ports and (1) 8 port POD: Brocade/IBM will provide the customer the last incremental 8-port POD free
RPQ# 8S0723
(Form completed by IBM or BP, sent to IBM & Brocade)
- *B64 “Port Aggregation” Program (thru 9/30/06)*
The customer buys (1) B64 with 32 ports, and trades in 32-ports of 1 or 2 Gbps old switching products (any brand). Brocade/IBM will provide the customer a 16-port POD free
RPQ# 8S0757
(Form completed by IBM or BP, sent to IBM & Brocade)



B64 (SW4900) – 1 & 2 Gig Refresh

- Customer buys 1 x B64 (32 ports – base machine configuration)
- Customer trades – in 32 ports (1 or 2 Gig)
- Additional 16 port PoD provided free of charge
- Certificate of Destruction required for all ports traded - in
- This is an IBM RPQ standard program
- IBM RPQ number is 8S0757



Brocade Business Partner Sales Program

- *American Express Brocade Rewards (to Oct 31, 2006)*
 - 1,000 AmEx points for either a 2109 - M48
 - 200 AmEx points for a 2005-B32
 - 200 AmEx points for a (SW4020) SAN Switch Module for BladeCenter
 - 100 AmEx points for a 2005-B16 – Full 16 ports
 - 500 AmEx points for a 2109-A16 Multi-Protocol Router
 - 100 AmEx points for 1 SAN Health engagement for an end-user
 - **NEW: IBM 2005-B64- \$250**
 - **NEW: IBM 2005-R18 - \$500**
 - **NEW: FC Routing Blade for M48- \$200**

<http://brocade.altourawards.com/default.asp>



Prawie z ostatniej chwili!

Brocade kupuje McData

MAKE THE BROCADE CONNECTION



Deal Overview and Timeline

- **August 8, 2006**
 - Brocade announces intent to acquire McData
 - Stock transaction
- **Process from August 8, 2006 until deal closure**
 - Companies operate separately and compete as they have been
 - No interaction between sales teams allowed
 - Integration planning (not implementation)
- **Process after deal closure**
 - Brocade will be the future company
 - Integration implementation (structure, products, etc.) will begin



This Transaction is Driven by the Desire to Deliver More Customer Benefits

- **Deal rationale**

- Broader and more compelling offerings
- Gives necessary scale to accelerate new, innovative solutions
- Significant cost synergies

- **Customer benefits today**

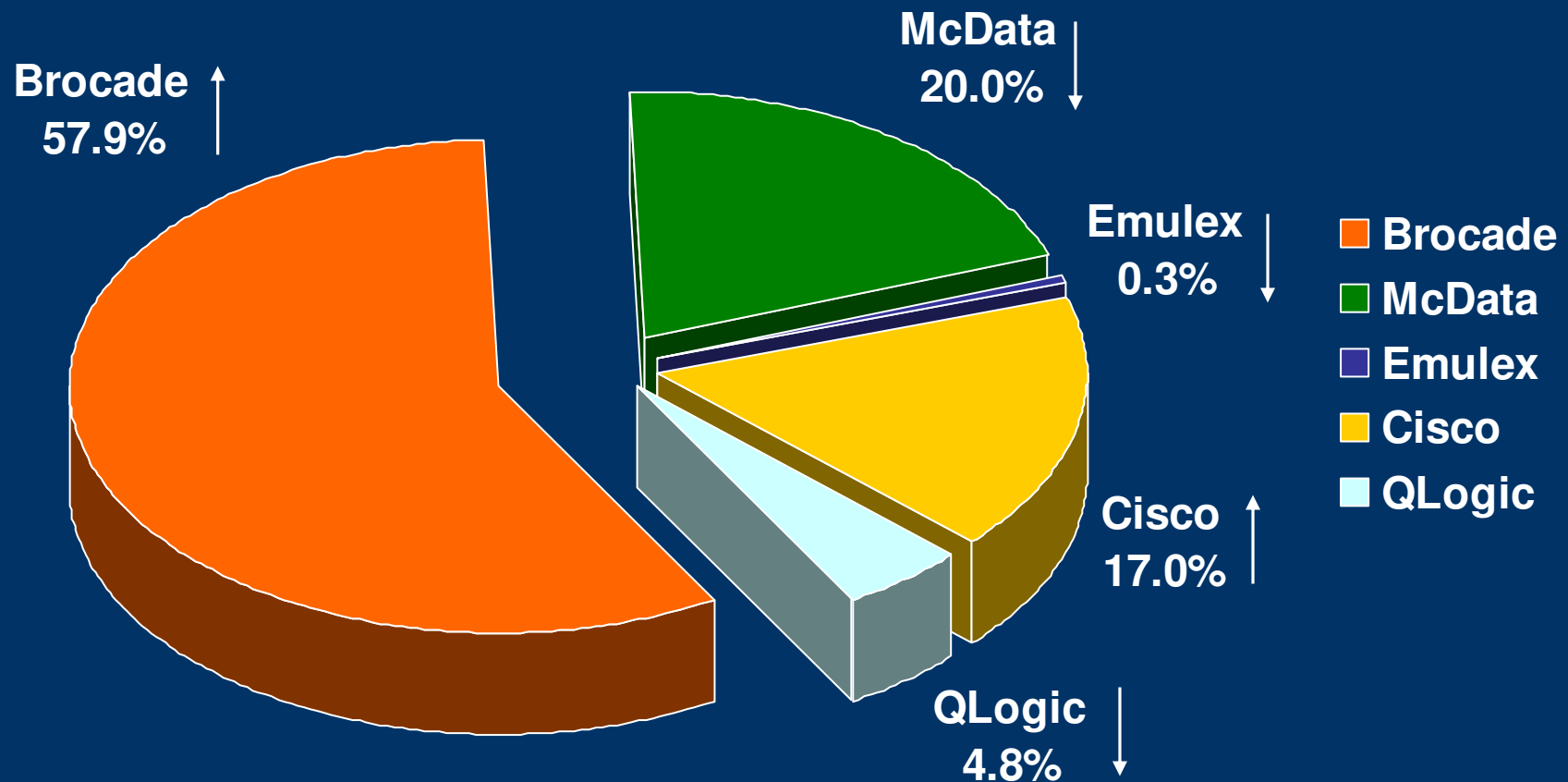
- Absolute commitment to investment protection and certainty of supply and support
- Stronger company to deliver solutions and support
- Commitment to future converged roadmap and platforms

- **Customer benefits at deal closure**

- Drive interoperability and unified management
- Accelerate time-to-market of new, innovative solutions
- Lower TCO
- Greater choices and flexibility for next-generation data centers



Total Ports Shipped (Switch + Directors) Market Share Q2CY06



Dziękuję...

kfingas@brocade.com

MAKE THE BROCADE CONNECTION

