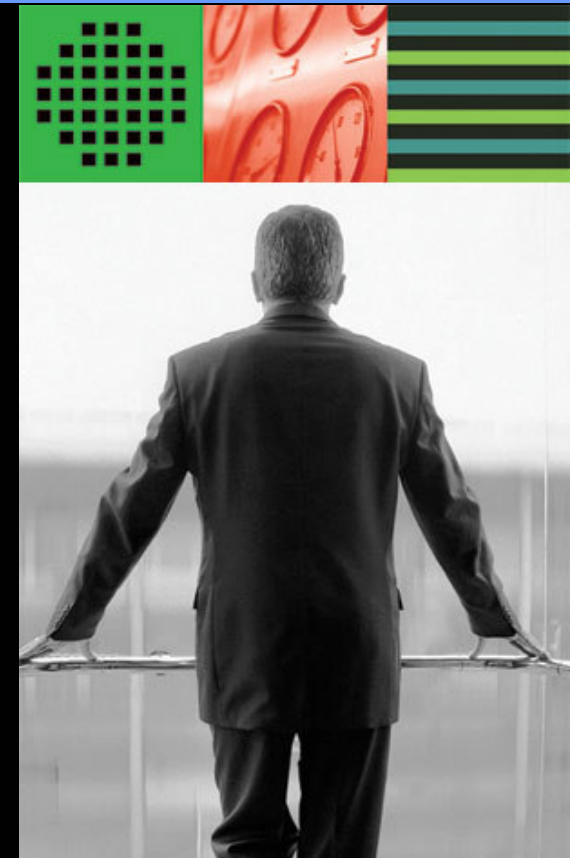


Le Mainframe System z au coeur des exploitations

Jean-marc_dupont@fr.ibm.com - Team zSeries
Jg_weyer@fr.ibm.com – Team zSeries

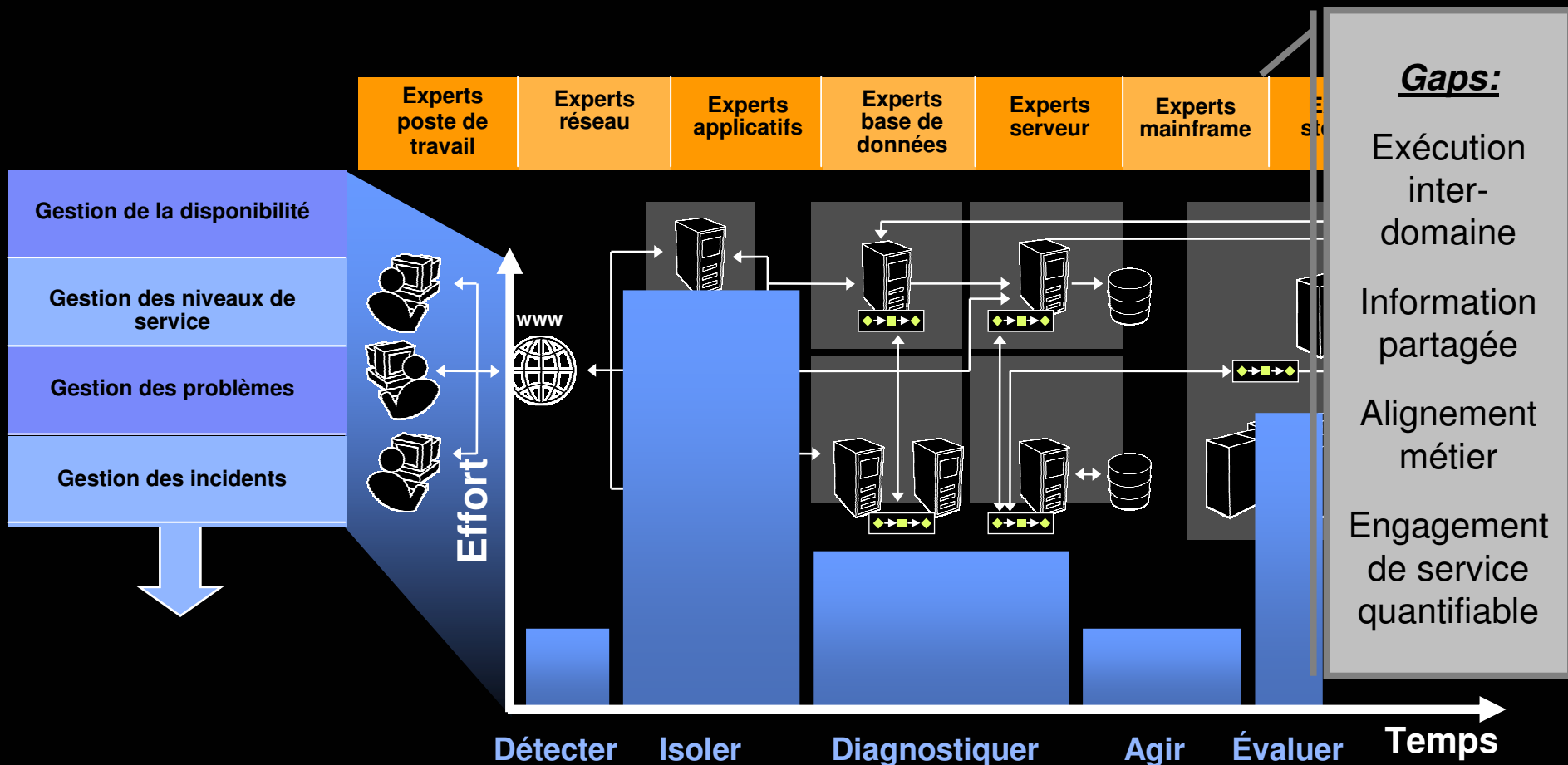
AGENDA

- **Vision IBM « IT Service Management »**
- **Virtualisation: accounting & reporting (TUAM)**
- **Nouveautés Supervision et Automatisation zOS**
- **Virtualisation: compliance SW (TLCM)**
- **Questions / Réponses**

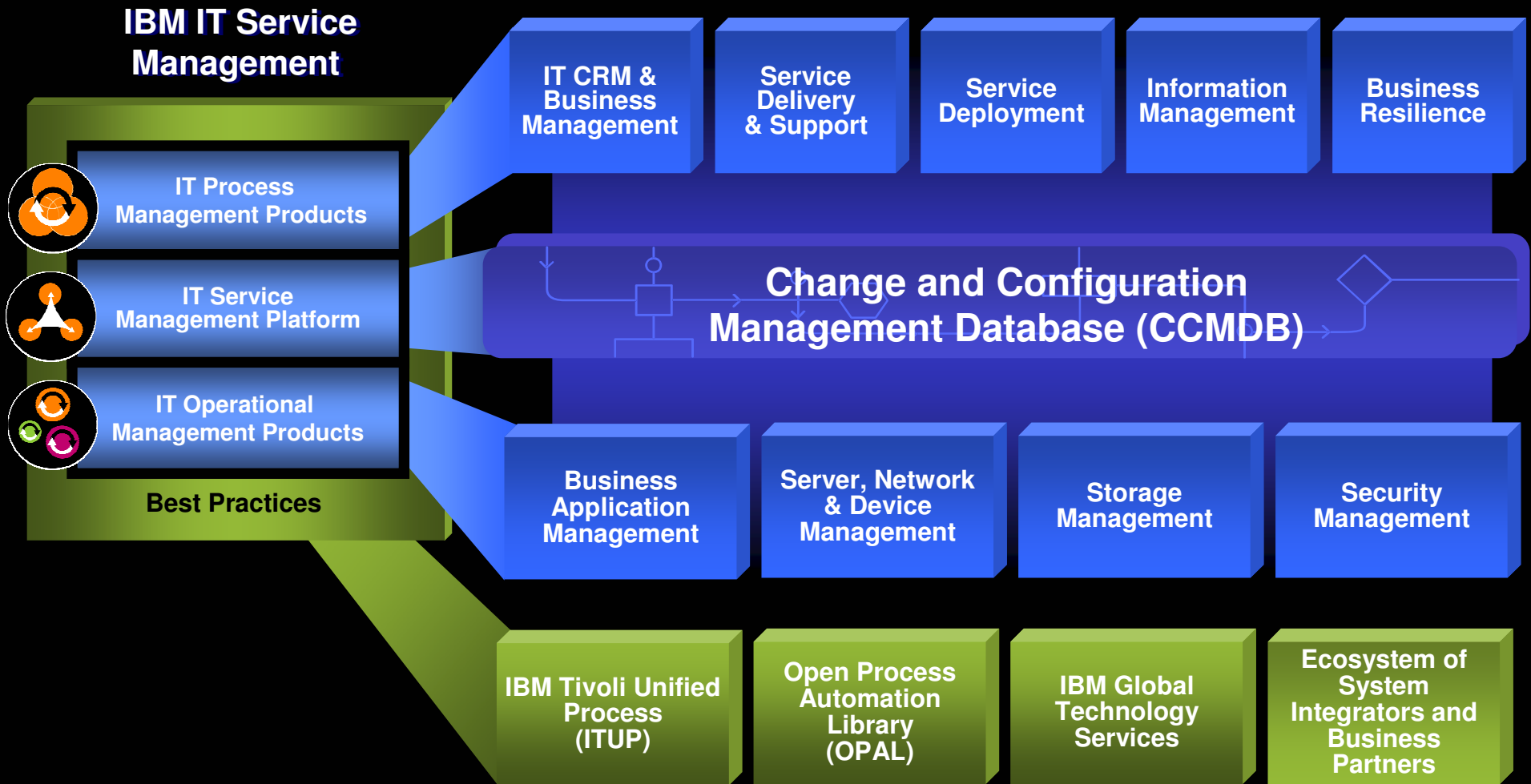


Concilier coûts et réactivité à travers les domaines

« Les solutions traditionnelles atteignent leurs limites, elles renforcent trop souvent le principe des silos et limitent l'efficacité des processus IT »



Une approche globale : IT Service Management



IT Service Management

Tivoli System Automation
NetView for z/OS, TWS

High Availability
Management

IT CAM family

Composite
Application
Management

OMEGAMON XE family

Performance
Management



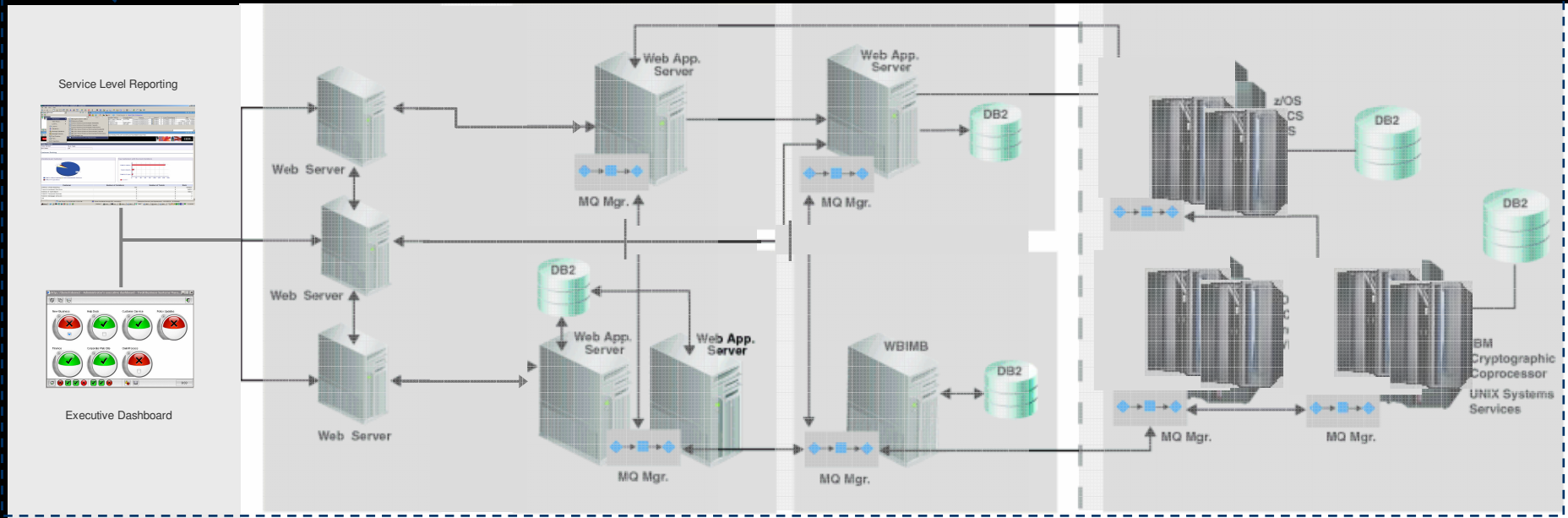
Tivoli Enterprise Portal

End-to-End Systems Management

Le management de "bout en bout" de l'infrastructure

Portfolio Tivoli

IBM Tivoli Monitoring v6.1	OMEGAMON XE on z/OS v4.1.0	OMEGAMON XE on IMS v4.1.0	OMEGAMON XE for DB2 PE/PM v4.1.0	OMEGAMON XE for CICS & IMS v4.1.0	OMEGAMON XE for MF Networks v4.1.0	OMEGAMON XE for Storage v4.1.0	License Compliance Manager for z/OS v4.1	Contract Compliance Manager v3.7
-----------------------------------	-----------------------------------	----------------------------------	---	--	---	---------------------------------------	---	---



OMEGAMON XE for Messaging v6.0.0	Composite Application Manager for WebSphere V6.1	Composite Application Manager for R.T. Tracking V6.1	Composite Application Manager for SOA V6.1	NetView on z/OS v5.2	System Automation for z/OS 3.1	Workload Scheduler for z/OS 8.3	Usage and Accounting Manager v6.1
---	---	---	---	-----------------------------	---------------------------------------	--	--



IBM Corporation / SWG / Tivoli

Virtualisation: accounting & reporting: Tivoli Usage & Accounting Manager (ex-CIMS)



© 2006 IBM Corporation

Quel est le problème ?

Difficulté pour affecter le coût, l'utilisation, le prix

Unix / Linux / Windows

Mainframes

Storage & many other systems

Databases & Networks

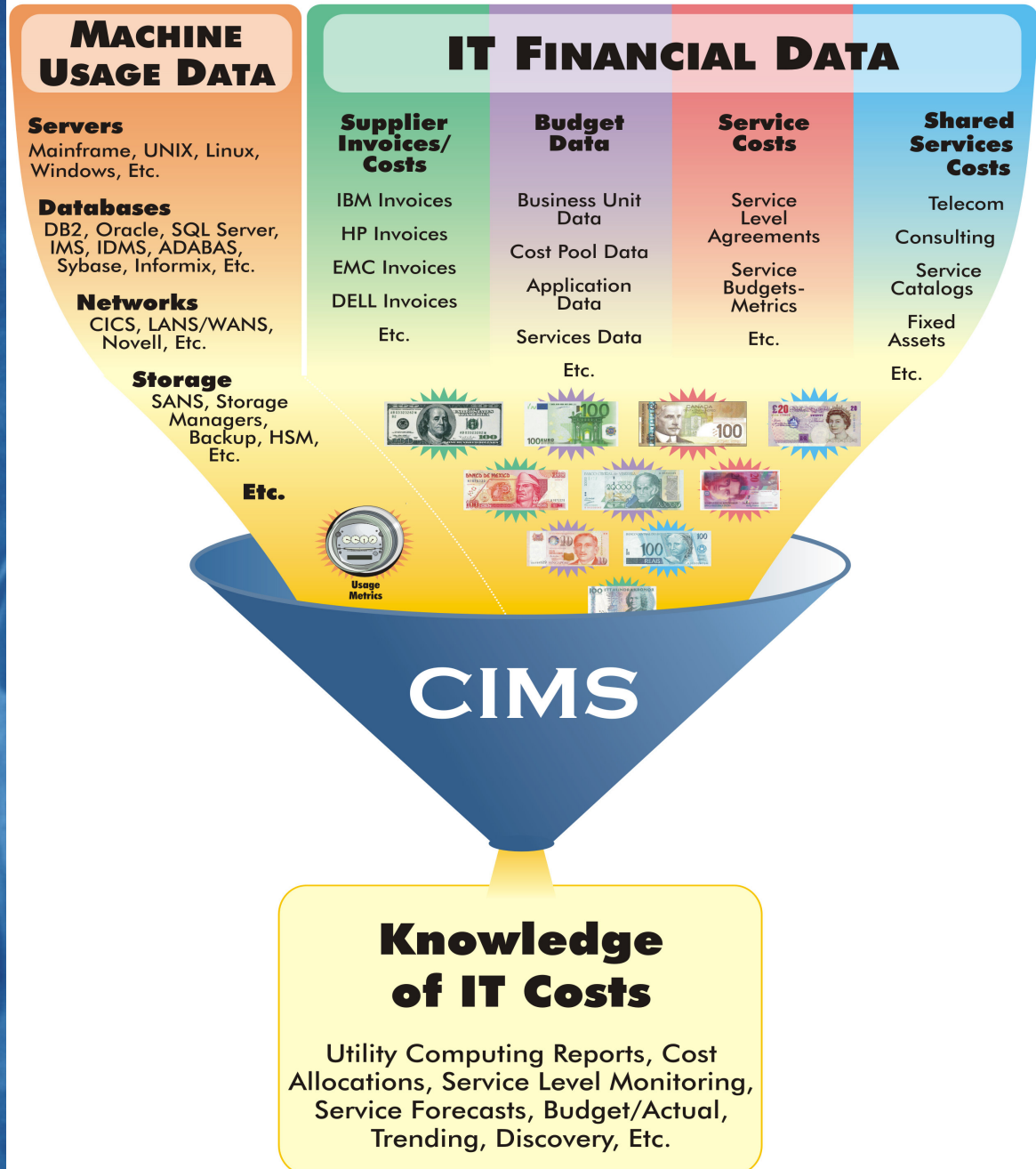
Internet & E-Mail

Le SI est composé de plusieurs types de plateformes, d'environnements, de sous-systèmes, et d'utilisateurs

- Coûteux à acquérir, à maintenir, et à utiliser
- Avec des méthodes de "logging" de différents formats et différentes unités

TUAM est un entonnoir

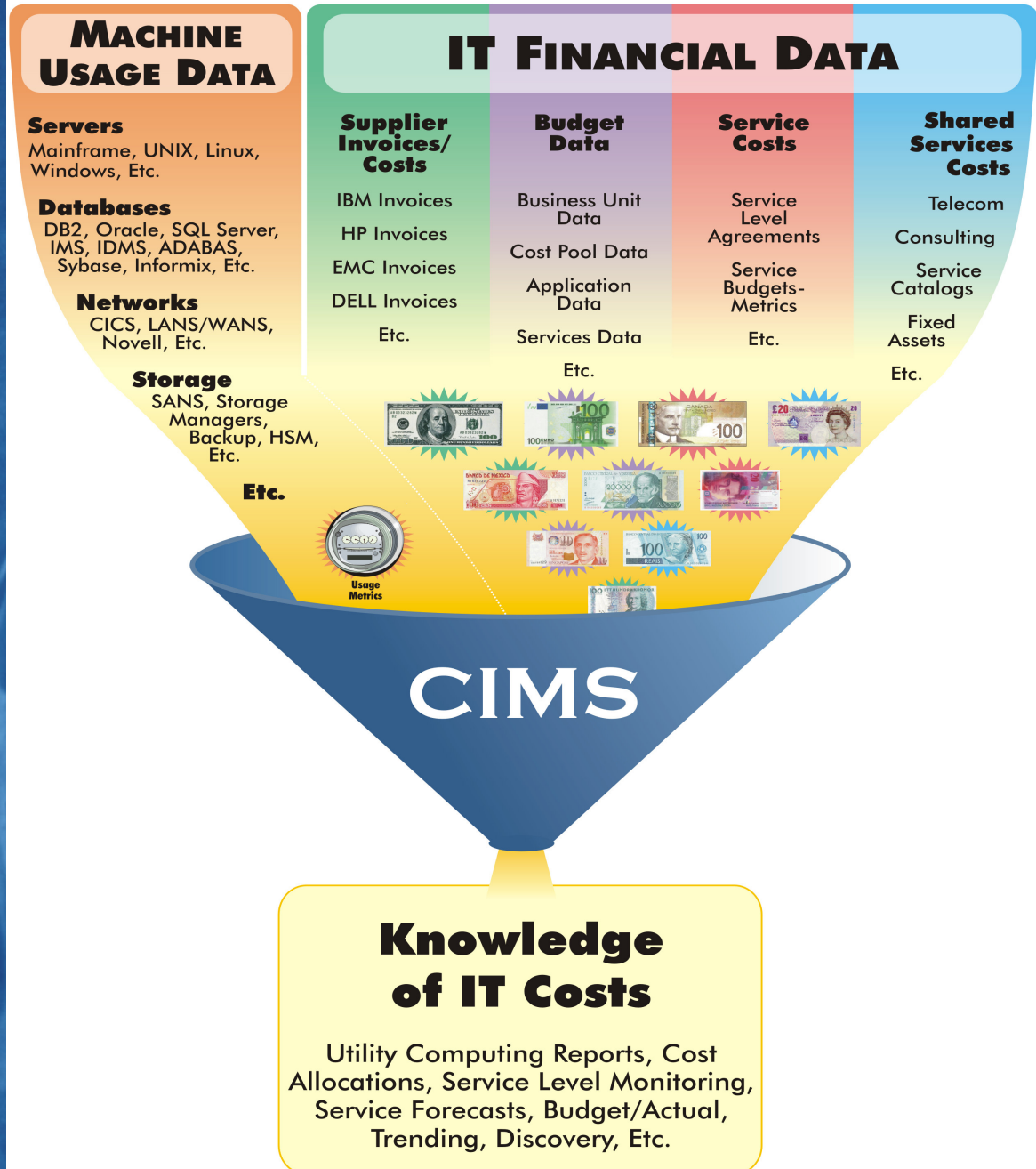
CIMS – Know What IT Costs



TUAM est un entonnoir...

... qui reçoit les données « brutes » en provenance des différents environnements

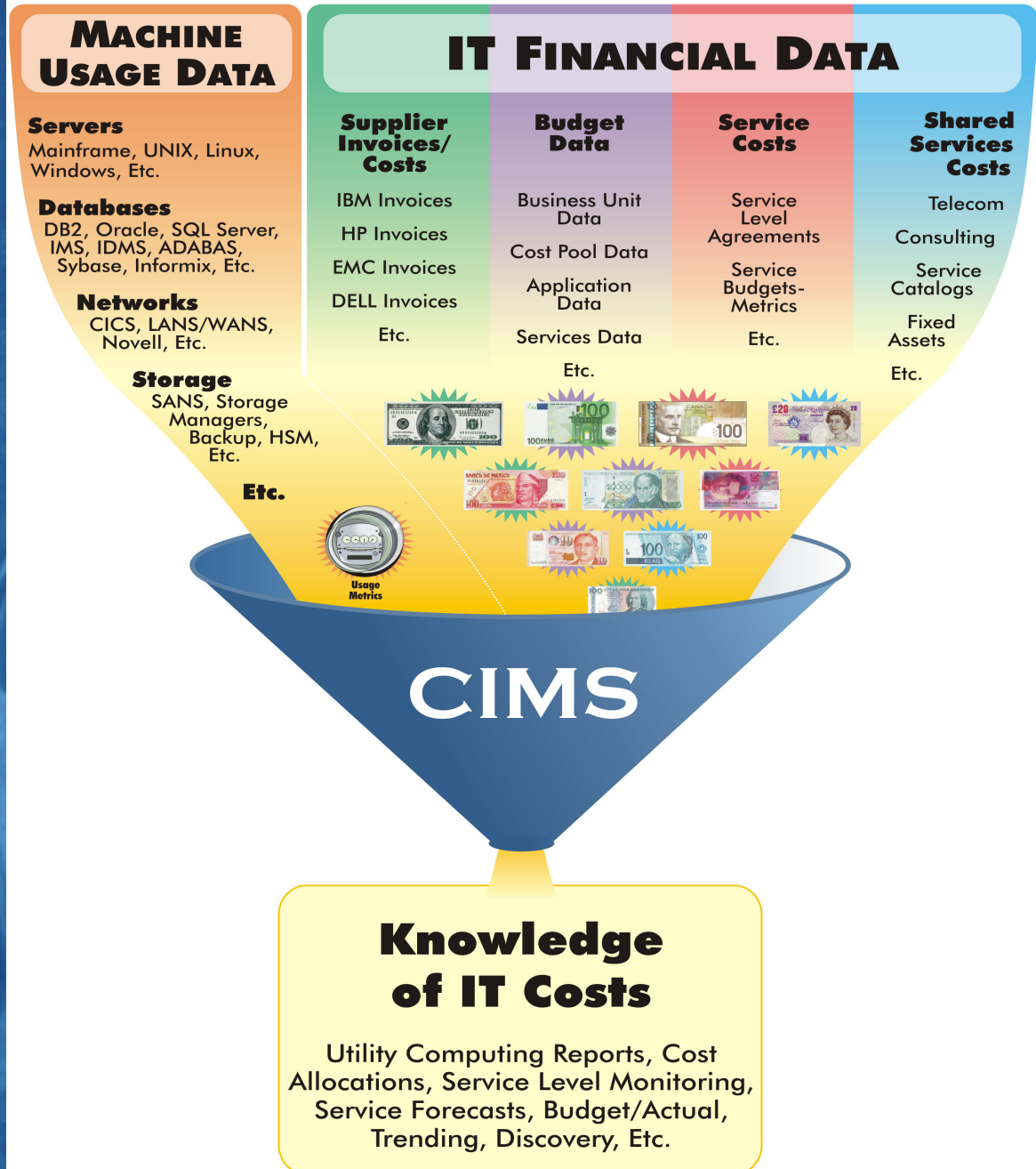
CIMS – Know What IT Costs



TUAM est un entonnoir

Pendant le traitement des données, les informations permettant d'identifier l'utilisateur, sont analysées

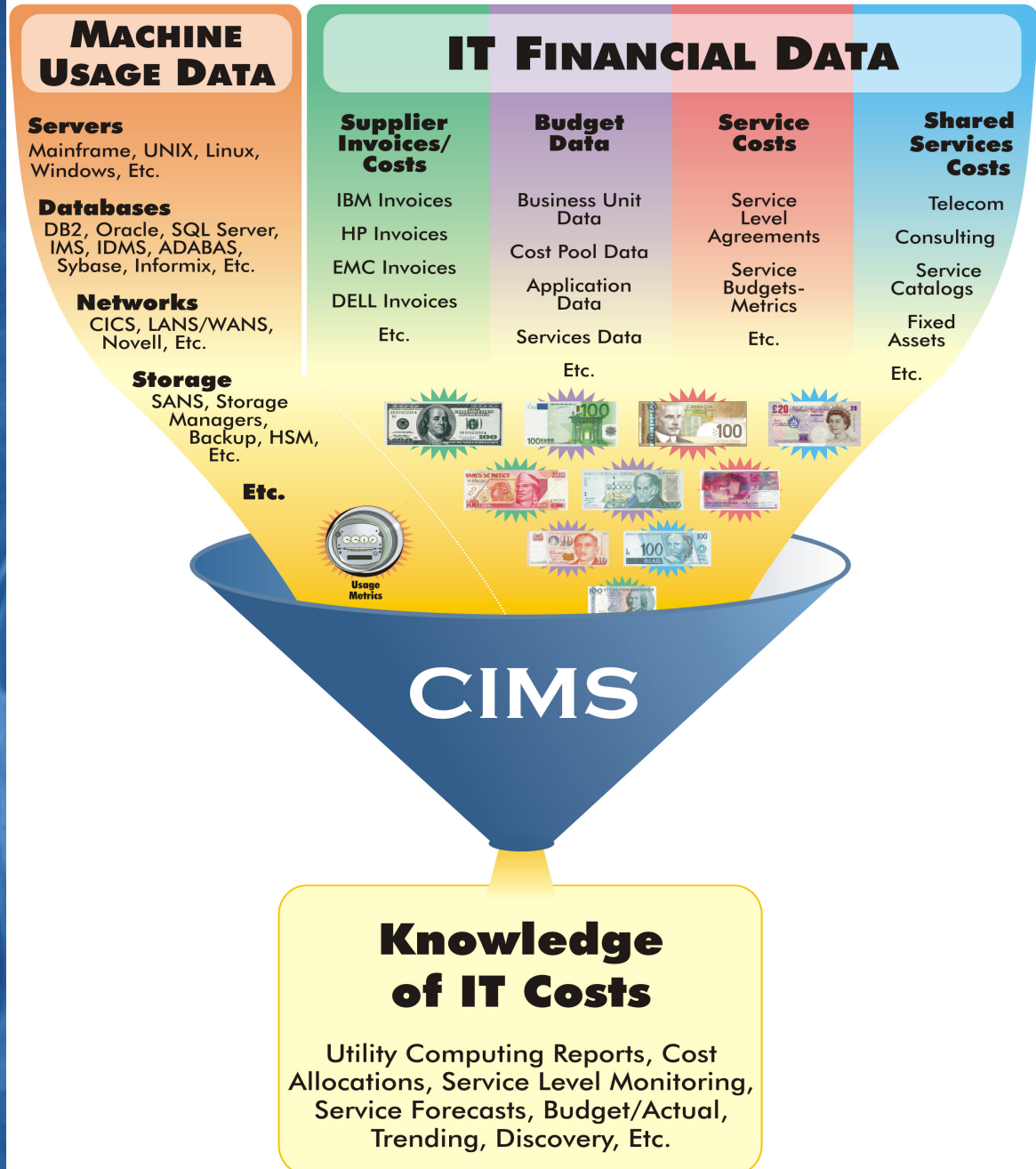
CIMS – Know What IT Costs



TUAM est un entonnoir

Quand les données ressortent de l'entonnoir, elles sont prêtes à être utilisées pour la comptabilisation et la facturation des ressources

CIMS – Know What IT Costs



Usage and Accounting Manager

Application View

Application	Charges
ATM - ATM Transactions	18,851.48
CCX - Credit Card	230,738.81
COM - Commercial Loans	35,078.06
DAC - Drafts and Collections	29,164.41
DEP - Electronic Deposits	41,420.42
MTG - Mortgages	55,540.65
ONE - Online Electronic Payments	13,637.31
RTM - Retirement	212,260.46
SSI - Secure Sales - Internet Commerce	17,449.17
TEL - Telephone Transactions	64,925.96
WTX - Wire transfers	51,639.48
Total	770,706.13

Application View

Application	Charges
COM - Commercial Loans	
COM Database	8,306.59
COM Email	2,318.80
COM Equipment	399.00
COM Print	0.30
COM Servers	1,534.31
COM Storage	22,185.45
COM Web	333.61
COM - Commercial Loans	35,078.06

Application View

Resource Group	Platform	Charges
COM Database		
COM Database	Mainframe	3,639.90
COM Database	Unix	1,395.66
COM Database	Windows	3,271.03
COM Database		8,306.59

ITUAM - Microsoft Internet Explorer

File Edit View Favorites Tools Help

Address http://www.cimserver.com/ActiveXViewer.asp?AccountLength1=4&AccountLength2=20&AccountLength3=36&AccountLength4=56&AccountLength5=0&AccountName1=Application&AccountName2=Resource+Group&AccountName3

Application Cost Publish Return Help

powered by crystal

Preview COM COM Database

Usage and Accounting Manager

Application View

Resource Group	Platform	Charges
COM Database		
COM Database	Mainframe	3,639.90
COM Database	Unix	1,395.66
COM Database	windows	3,271.03
COM Database		8,306.59

ITUAM - Microsoft Internet Explorer

Address: http://www.cimserver.com/ActiveXViewer.asp?AccountLength1=4&AccountLength2=20&AccountLength3=36&AccountLength4=56&AccountLength5=0&AccountName1=Application&AccountName2=Resource+Group&AccountName3

Application Cost Publish Return Help

powered by crystal

Preview COM COM Database COM Database Unix

COM Database Unix

- COM Database Unix edc
- COM Database Unix edc
- COM Database Unix edc
- COM Database Unix gar
- COM Database Unix rox

Usage and Accounting Manager

Application View

Platform				Charges
Server				
COM Database	Unix			
COM Database	Unix	eddie		0.00
COM Database	Unix	eddie	EDDIE10	554.96
COM Database	Unix	eddie	EDDIE920	840.70
COM Database	Unix	garheld		0.00
COM Database	Unix	roxie		0.00
				1,395.66

COM Database Unix eddie EDDIE920

Unix Oracle Charges 840.70

COM Database Unix eddie EDDIE920 840.70

Usage and Accounting Manager

Application View

Rate Group	Units	Charges
Rate		
COM Database Unix eddie EDDIE920		
Unix Oracle Charges		
Unix Oracle Logins	23	0.04
Unix Oracle Session CPU (Minutes)	411.36	40.81
Unix Oracle Connect (Hours)	3,562.49	160.31
Unix Oracle UGA Memory (MB Days)	9,266.99	0.00
Unix Oracle PGA Memory (MB Days)	86,747.06	0.19
Unix Oracle Rec CPU (Minutes)	0.02	0.02
Unix Oracle User Commits	1	0.00
Unix Oracle Physical Reads	273,677	41.04
Unix Oracle Physical Writes	52,944	18.51
Unix Oracle DB Block Gets	8,321,411	416.05
Unix Oracle Messages Sent	327,441	147.36
Unix Oracle Messages Received	327,707	16.37
Unix Oracle Charges		840.70

Run Total Rate Group Percent

Mainframe Storage Charges

Account	Charge	%
COM - Commercial Loans	22,006.32	43.04%
WTX - Wire transfers	9,014.25	17.63%
ONE - Online Electronic Payments	7,394.70	14.46%
DAC - Drafts and Collections	3,402.90	6.66%
SSI - Secure Sales - Internet Commerce	1,975.20	3.86%
MTG - Mortgages	1,814.86	3.55%
CCX - Credit Card	1,780.80	3.48%
RTM - Retirement	1,138.20	2.23%
DEP - Electronic Deposits	1,064.10	2.08%
TEL - Telephone Transactions	1,059.00	2.07%

Total Mainframe Storage Charges

51,127.03

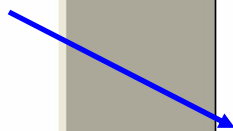
%

Total Equipment/Shared Services	3,977.00	0.52%
Total Unix DB2 Charges	1,738.08	0.23%
Total Unix Process Charges	266.64	0.03%
Total Unix Filesystem	2,639.05	0.34%
Total Unix Orade Charges	5,246.32	0.68%
Total MS Windows Storage Charges	6,421.56	0.83%
Total MS Windows SQL Server	7,347.82	0.95%
Total MS IIS	8,862.02	1.15%
Total MS Exchange Sent and Received	77.20	0.01%
Total MS Exchange Mailbox	19,326.43	2.51%
Total MS Windows Processes	641,936.46	83.29%
Total MS Windows Print	63.51	0.01%
Total Mainframe Batch Charges	3,796.87	0.49%
Total Mainframe TSO Charges	774.25	0.10%
Total Mainframe Input/Output Charges	520.36	0.07%
Total Mainframe Printer/Reader Charges	80.43	0.01%
Total Mainframe Storage Charges	51,127.03	6.63%
Total Mainframe Print Charges	1.50	0.00%
Total Mainframe CICS Charges	1,690.80	0.22%
Total Mainframe DB2 Charges	14,812.80	1.92%

Run Total

770,706.13

- Equipment/Shared Services
 - Credit Card
 - ATM Transactions
 - Mortgages
 - Electronic Deposits
 - Drafts and Collections
 - Commercial Loans
- Unix DB2 Charges
- Unix Process Charges
- Unix Filesystem
- Unix Orade Charges
- MS Windows Storage Charges
- MS Windows SQL Server
- MS IIS
- MS Exchange Sent and Received
- MS Exchange Mailbox
 - Telephone Transactions
 - Secure Sales - Internet Commerce
 - Mortgages
 - Commercial Loans
 - Online Electronic Payments
 - Credit Card
 - Electronic Deposits
 - Retirement
- MS Windows Processes
- MS Windows Print
- Mainframe Batch Charges
- Mainframe TSO Charges
- Mainframe Input/Output Charges
- Mainframe Printer/Reader Charges
- Mainframe Storage Charges
- Mainframe Print Charges
- Mainframe CICS Charges
- Mainframe DB2 Charges



Usage and Accounting Manager



ITUAM Reporting

Please select parameters for Reports.

Identifier : Jobname

Date Drilldown :

- User
- Account Code
- Shift
- Jobname
- Work ID
- System ID
- Job Priority
- Job Class
- Start Date
- Stop Date
- Last Name
- Site name
- S-IP
- S-IP0
- S-IP1
- S-IP2
- S-IP3
- S-PORT
- DESCRIPTION
- DATETIMESENT
- DATETIMEMODIFIED
- DATETIMEENTERED
- USERID

ITUAM - Microsoft Internet Explorer

File Edit View Favorites Tools Help

Back Forward Stop Home Search Favorites Refresh Print Mail Stop


Address http://www.cimserver.com/ActiveXViewer.asp?AccountCodeStart=WTX&AccountCodeEnd=zzzz&DateStart=04%2f01%2f2006&DateEnd=04%2f30%2f2006&AccountStart=1&AccountLength=4&Ident

Publish Return Help

100% 1 of 1

powered by crystal

Usage and Accounting Manager



Mainframe Batch for WTX-Wire transfers by Jobname

Date Range: 4/1/2006 to 4/30/2006

Jobname	1-Mainframe Jobs Started	3-Mainframe Steps Started	5-Mainframe CPU Minutes	7-Mainframe CPU Minutes (Initiator)	8-Mainframe CPU Minutes (All)
CIMS01	1	1	0.00	0.00	0.00
CIMS02	2	2	0.00	0.00	0.00
CIMS03	30	30	0.00	0.00	0.00
CIMS03AL	152	190	3.14	1.11	4.34
CIMS03CR	5	8	0.09	0.04	0.13
CIMS03CS	46	163	4.38	0.76	5.24
CIMS03GN	8	48	0.51	0.24	0.79
CIMS03IE	1	4	0.03	0.01	0.05
CIMS03IM	2	8	0.11	0.04	0.15
CIMS03SX	13	49	1.51	0.23	1.77
CIMS03UT	45	100	0.98	0.49	1.49
CIMS03UX	35	83	1.25	0.38	1.67
CIMS04	9	9	0.00	0.00	0.00
CIMS04L	1	3	0.02	0.01	0.03
CIMS06	11	11	0.00	0.00	0.00
CIMS06CC	3	9	0.10	0.12	0.22
CIMS06CL	2	12	0.24	0.06	0.30
CIMS06CS	1	1	0.00	0.01	0.01
CIMS06EX	1	2	0.06	0.04	0.11
CIMS06LR	1	1	0.01	0.01	0.01
CIMS06WS	2	3	0.04	0.04	0.08
CIMS10	15	15	0.00	0.00	0.00
CIMS10A0	1	1	0.00	0.01	0.01
CIMS10A1	1	13	0.16	0.12	0.29
CIMS10A2	1	3	0.02	0.02	0.04
CIMS10A3	1	1	0.00	0.01	0.02
CIMS10A5	2	4	0.06	0.03	0.10
CIMS10A6	1	2	0.02	0.02	0.04
CIMS10B1	1	3	0.15	0.02	0.17
CIMS10C1	1	3	0.24	0.01	0.25
CIMS10C2	1	15	0.31	0.14	0.47
CIMS10C3	1	4	0.04	0.04	0.09
CIMS10XX	14	26	0.16	0.20	0.37
CIMSSMFD	30	660	30.20	7.62	38.82
Total	441	1,487	43.81	11.83	57.05

Done Internet

ITUAM - Microsoft Internet Explorer

Address: http://www.cimserver.com/ActiveXViewer.asp?InvoiceLevel=1&ConfigOrgName=Big+Time+Bank&ConfigAddressLine1=Any+Town%2c+USA&ConfigAddressLine2=&ConfigAddressLine3=&ConfigAddressLine4=&InvoiceNumber=1&Se

Invoice by Account Level Publish Return Help

powered by crystal

Usage and Accounting Manager

Invoice

Billing Period: 04/01/2006 to 04/30/2006

IT Expenses by Account

Account Type	Expense Amount (K)
ATM Transactions	20
Credit Card	230
Commercial Loans	40
Drafts and Collections	35
Electronic Deposits	45
Mortgages	60
Online Electronic Payments	20
Retirement	210
Secure Sales - Internet Commerce	70
Telephone Transactions	50
Wire transfers	55

Done Internet

Top 10 Pie Chart

Publish

Return

Help

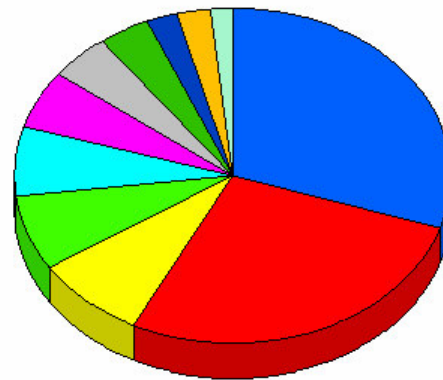
Usage and Accounting Manager



Top 10 Cost Report - Pie Chart

Account Range: All Accounts
Date Range: 4/1/2006 to 4/30/2006

Account Charges



CCX	29.9%
RTM	27.5%
TEL	8.4%
MTG	7.2%
WTX	6.7%
DEP	5.4%
COM	4.6%
DAC	3.8%
ATM	2.4%
SSI	2.3%
Others	1.8%
Total: 100.0%	

Account	%	Charges
CCX-Credit Card	29.94%	230,738.81 Invoice
RTM-Retirement	27.54%	212,260.46 Invoice
TEL-Telephone Transactions	8.42%	64,925.98 Invoice
MTG-Mortgages	7.21%	55,540.55 Invoice
WTX-Wire transfers	6.70%	51,639.48 Invoice
DEP-Electronic Deposits	5.37%	41,420.42 Invoice
COM-Commercial Loans	4.55%	35,078.06 Invoice
DAC-Drafts and Collections	3.78%	29,164.41 Invoice

ITUAM - Microsoft Internet Explorer

File Edit View Favorites Tools Help

Address <http://www.cimserver.com/ActiveXViewer.asp?Year=2006&ACRRangeDisplay=Account+Range%3a+All+Accounts&InvoiceLevel=1&AccountCodeStart=&AccountCodeEnd=zzzz&AccountStart=1&AccountLength=4&UserID=mark&Year=2006>

Usage Trend Graph Publish Return Help

powered by crystal

Preview

- PSF Number of Feet of Paper
- Tape Mounts
- Disk Data Sets
- Disk Space Allocated (MB Days)
- Disk Space Used (Non VSAM) (MB Days)
- Secondary Space Allocated (Non VSAM) (MB Days)
- Disk Space Wasted (Non VSAM) (MB Days)
- One Part Forms
- Standard Forms
- Standard Forms Remote
- CICS Transaction Minutes
- CICS CPU Minutes
- CICS Transactions
- CICS Input Messages
- CICS Output Messages
- CICS Messages
- CICS File Access Count
- VMware CPU Usage
- VMware CPU Usage Guaranteed
- VMware Disk Kilobytes Read
- VMware Disk Kilobytes Written
- VMware Memory Kilobytes Active
- VMware Memory Kilobytes Granted
- VMware Network Kilobytes Read
- VMware Network Kilobytes Transfer
- DB2 Transactions (Records)
- DB2 Transaction CPU Minutes
- DB2 Accumulated CPU Minutes
- DB2 Transaction Elapsed Minutes
- DB2 Accumulated Elapsed Minutes
- DB2 Entry/Exit Events
- DB2 I/O Activity (Get Pages)
- MS Windows SQL Server Records
- MS Windows SQL Server Duration (Seconds)
- MS Windows SQL Server CPU (Seconds)**
- MS Windows SQL Server Reads
- MS Windows SQL Server Writes
- MS Windows SQL Server Used (MB Days)
- IIS FTP Bytes Received
- IIS FTP Bytes Sent
- IIS FTP Successful Protocol Status
- IIS FTP Redirection Protocol Status
- IIS FTP Client Error Protocol Status

Usage and Accounting Manager

Resource Usage Trend

Account Range: All Accounts
Year: 2006
MS Windows SQL Server CPU (Seconds)

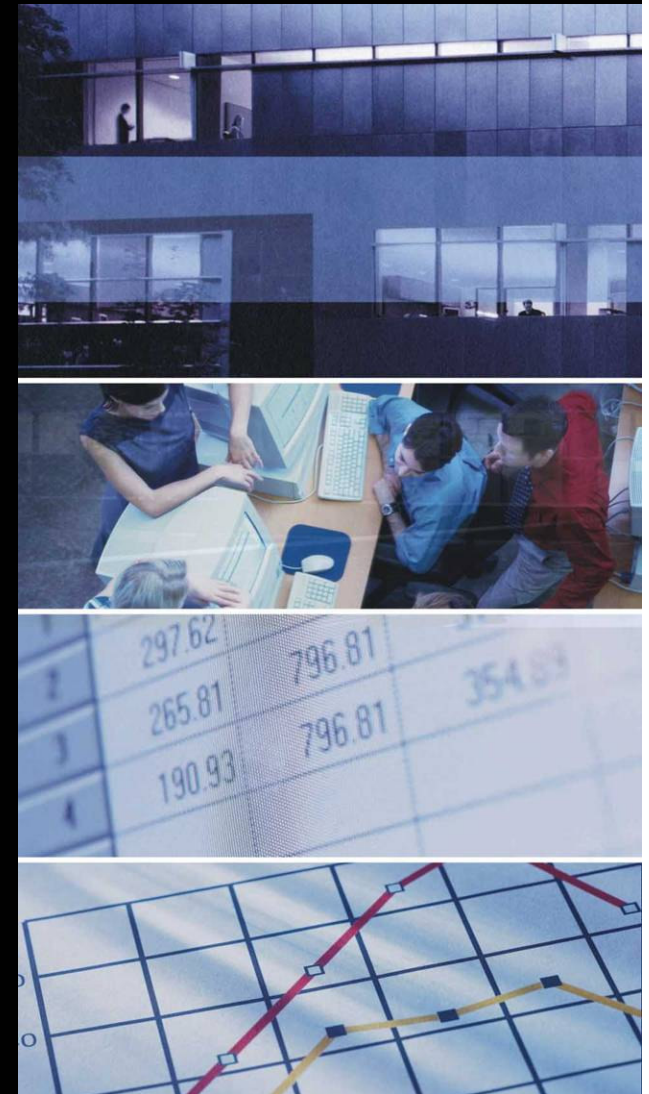
Resource Usage per Month

Month	Resource Usage
2006/01 January	19,545.66
2006/02 February	12,306.85
2006/03 March	16,959.50
2006/04 April	20,485.42
2006/05 May	17,487.22
2006/06 June	105.98
Total	86,890.62

Done Internet

Tivoli Usage and Accounting Manager est...

- **Un composant essentiel du système de reporting financier**
(Services partagés, facturation, Profitabilité par domaines, intégration aux ERP, Affectation de coûts, facturation à l'utilisation, analyse de tendance pour les ressources et les coûts, etc.)
- **Support Multi-Platesformes**
(Mainframe, Unix, Linux, Windows, etc.)
- **Support de multiples sous-systèmes**
(DB2, Oracle, SQL Server, CICS, Virtualization, Web, E-Mail, Networks, Storage, Print Servers, etc.)
- **Accès web**
(Web-Based Reporting & Drill-Down and multiple outputs)



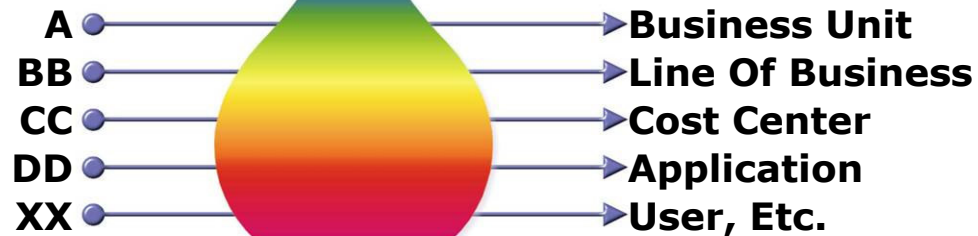
Application de règles “business”

IDENTIFICATION CODES

User ID's ♦ Job Names ♦ Account Codes ♦ Transaction ID's
Network ID's ♦ Project Codes ♦ DSN's ♦ Email Addresses
Security ID's ♦ Extensions ♦ Folder Names
Authorization ID's ♦ IP Addresses
Server ID's

Etc.

Account Code
Conversion



CIMS Financial Modeler - Microsoft Internet Explorer

File Edit View Favorites Tools Help

Back Forward Stop Home Search Favorites Refresh Mail Print New Window Help

Address http://www.cimserver.com/FinancialModeler/

File View Action Help

Logout New Open Save Add Rate Add Pool Add Subpool Del Rate Del Pool Del Subpool Shared

CIMS Standard Model

Budget Values Percent Allocation Cost Calculations Rate Calculations

View cost calculations for each pool.

	e Costs		Other Hardware Costs			Personnel Costs			Miscellaneous Cost		Total
	ix	Windows	Network	Host Printers	Misc.	Support Staff	DBA Group	Help Desk	Floor Space	Etc.	
Total Budget 12 Months	500,000	500,000	250,000	450,000	300,000	3,500,000	1,250,000	500,000	200,000	0	18,800,000
Budget Per Month	41,667	41,667	20,833	37,500	25,000	291,667	104,167	41,667	16,667	0	1,566,667
Z017 - Pages Printed - Local	0	0	0	15,000	0	0	0	0	0	0	15,000
Z016 - Lines Printed - Local	0	0	0	7,500	0	0	0	0	0	0	7,500
WPRTSBPC - MS Windows Print Submi...	0	0	0	3,750	0	0	0	0	0	0	3,750
LLH101 - Unix Pages Printed	0	0	0	11,250	0	0	0	0	0	0	11,250
LLA107 - Unix Interactive Total CPU (...)	29,167	0	0	0	0	43,750	0	0	0	0	89,583
WSCBytes - IIS Web Bytes Sent	0	8,333	0	0	0	29,167	0	0	0	0	37,500
WTimeTkn - IIS Web Time Taken (Milli...	0	8,333	0	0	0	29,167	0	8,333	1,667	0	62,083
SQLWRITE - MS Windows SQL Server...	0	4,167	0	0	0	0	0	0	833	0	5,000
SQLREADS - MS Windows SQL Server...	0	4,167	0	0	0	0	0	0	833	0	5,000
SQLCPU - MS Windows SQL Server C...	0	8,333	0	0	0	0	31,250	0	0	0	54,167
LLR105 - Unix Filesystem Used (GB D...	0	0	0	0	0	14,583	0	0	1,667	0	133,750
LLA104 - Unix Interactive Connect Ti...	2,083	0	0	0	0	0	0	0	0	0	10,417
LLE102 - Unix Oracle Session CPU (Mi...	10,417	0	0	0	0	0	36,458	0	0	0	71,875
LLE107 - Unix Oracle User Commits	0	0	0	0	0	0	0	0	0	0	8,333
LLE103 - Unix Oracle Connect (Hours)	0	0	0	0	0	0	0	0	0	0	8,333
DISKSIZE - MS Windows Folder Disk U...	0	0	0	0	0	0	0	4,167	3,333	0	31,667
EXMBXMSG - MS Exchange Mailbox (...)	0	0	4,167	0	0	0	0	0	0	0	4,167
EXMBXSIZ - MS Exchange Mailbox Siz...	0	8,333	1,042	0	0	0	0	6,250	0	0	15,625
ZDSK@06 - Migrated to Tape DSNs	0	0	0	0	0	0	0	4,167	0	0	108,333
ZZ32 - DB2 Transaction CPU Minutes	0	0	0	0	0	0	26,042	0	0	0	155,208
ZZ05 - Tape Mounts	0	0	0	0	0	29,167	0	0	0	0	68,750
Z036 - TSO CPU Minutes (All)	0	0	0	0	0	0	0	8,333	0	0	112,500
Z003 - Mainframe CPU Minutes	0	0	15,625	0	25,000	145,833	10,417	10,417	8,333	0	546,875
Total	41,667	41,667	20,833	37,500	25,000	291,667	104,167	41,667	16,667	0	1,566,667

Financial Modeler

Ready User: know

Done Internet

Usage and Accounting Manager

Login Reports Spreadsheets Favorites Admin Help Logout Home

Reports

Invoices

- Invoice by Account Level
- Application Cost
- Account Total Invoice
- Alternate Invoice
- Invoice with Budget
- Invoice with Shifts
- Run Total Invoice with Shifts
- Run Total Invoice
- Run Total Percent
- Run Total Rate Group Percent
- Zero Cost Center Invoice
- Invoice by Account Level V2

Account Reports

- Account Budget for Period YTD
- Account Summary YTD
- Account Summary by Week
- Account Summary YTD - Wide
- Account Summary by Week - Wide
- Account Summary Daily
- Account Summary Daily 2
- Summary Crosstab - Charges
- Summary Crosstab 2 - Charges
- Summary Crosstab - Usage
- Summary Crosstab 2 - Usage
- Daily Crosstab - Charges
- Daily Crosstab - Usage
- Weekly Crosstab - Charges
- Weekly Crosstab - Usage

Monthly Crosstab - Charges

Monthly Crosstab - Usage

Top Usage Reports

- Top 10 Cost
- Top 10 Bar Graph
- Top 10 Pie Chart
- Top 10 By Rate Code

Variance Reports

- Cost Variance
- Cost Variance Drilldown
- Resource Variance

Trend

- Cost Trend
- Resource Usage Trend
- Cost Trend Graph
- Cost Trend Graph 2
- Usage Trend Graph
- Cost Trend by Rate

Resource Detail

- Detail By Multiple Identifiers
- Detail By Multiple Identifiers with Acct
- Detail by Rate Group
- Detail by Rate Group/Identifier
- Batch Report
- CICS Transaction ID Report
- DB2 Summary
- Exchange 2000
- SQL Server 2000

Windows Disk

Audit

- Client Audit Report
- Rate Audit Report
- Transaction Audit Report

Other

- Job Cost
- Percentage
- Transaction Report
- Line Item Budget
- Zero Cost Factor
- Rate
- Client
- Configuration

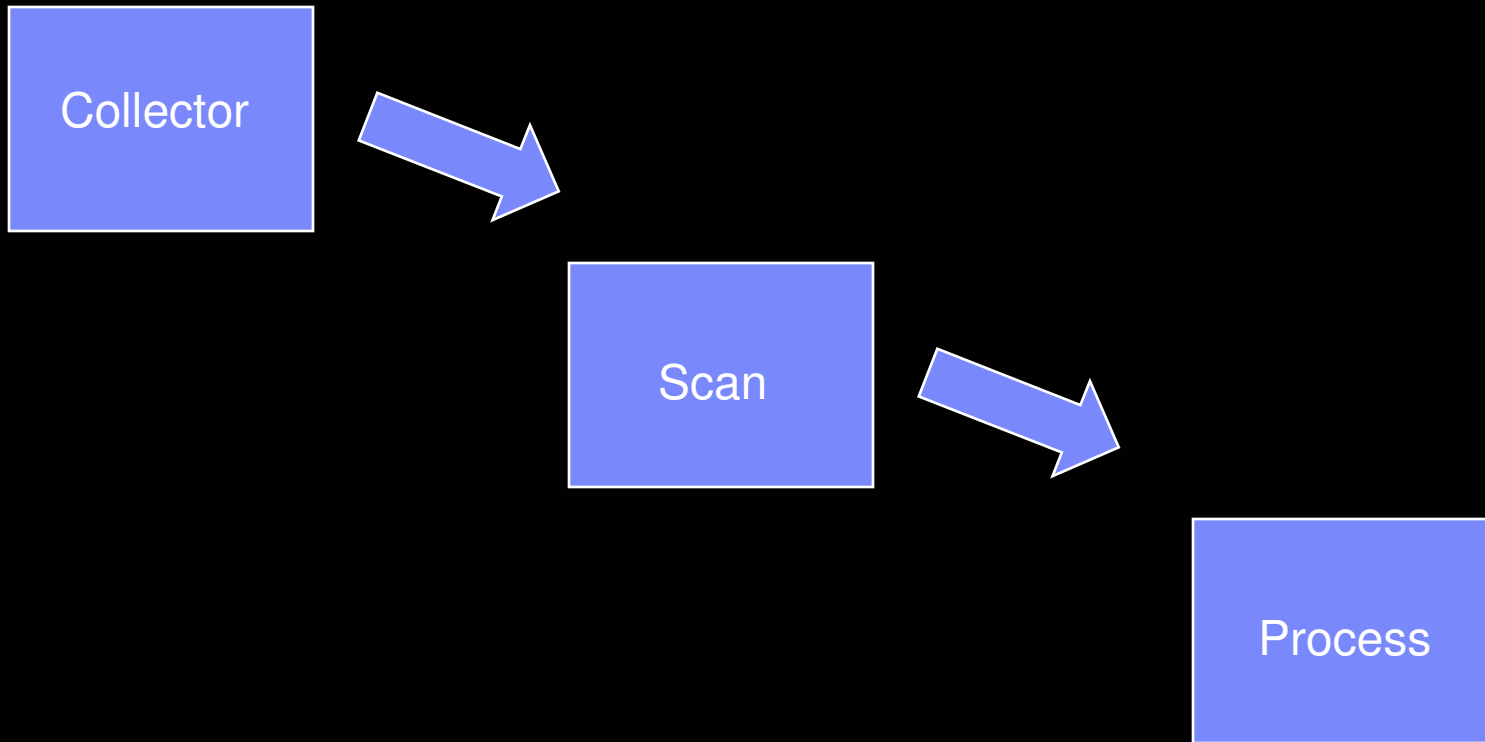
Custom

- HBReport
- Storage Usage
- CIO Usage
- test

Expand All

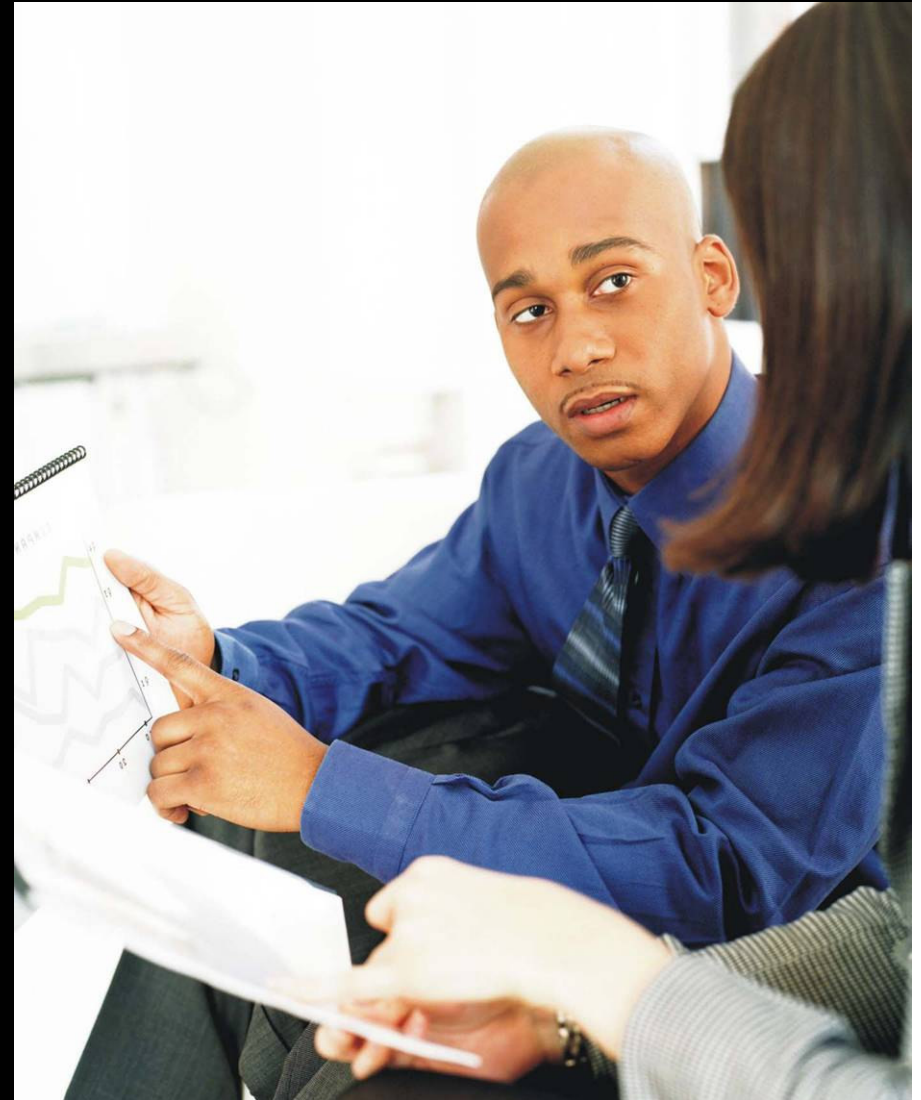
Collapse All

ITUAM automated processing



Apports de Tivoli Usage & Accounting Manager

- Affectation des coûts IT aux utilisateurs, à des centres de coûts, des applications, des départements... qui consomment ces ressources .
 - de façon équitable
 - compréhensible
 - auditable,
 - et facile à gérer
- Optimisation des coûts IT par:
 - Identification des tendances
 - Analyse en temps réel





IBM Corporation / SWG / Tivoli

Nouveautés Supervision et Automatisation zOS



© 2006 IBM Corporation

La Supervision de "Bout en bout" de l'infrastructure

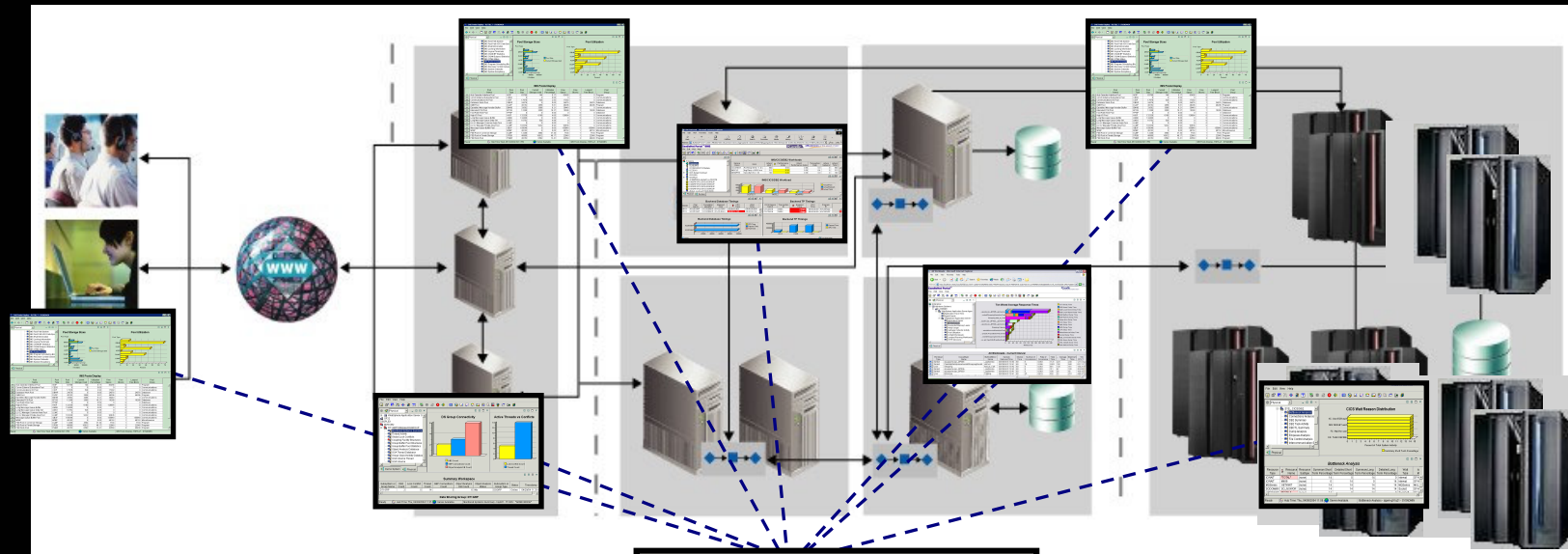
Avec OMEGAMON XE 4.1.0, ITM 6.1, & IT CAM suite



Platforms	Databases	Applications	Business Integration	Web Infrastructure	Messaging & Collaboration	Networks
Unix	DB2 (Z & Distributed)	SAP	Web Services	WebSphere (Z & Distributed)	Lotus Domino	TCP/IP & SNA
Windows		.NET (full suite of MS apps)	CICS			
Cluster(s)	Oracle		SOA	iPlanet		
Linux	SQL	Citrix	IMS			
z/VM	Sybase	Siebel	WebSphere MQ	Apache	Exchange	Devices
z/OS		Tuxedo	WebSphere MQ Integrator			
VMWare	Informix					
OS/400						

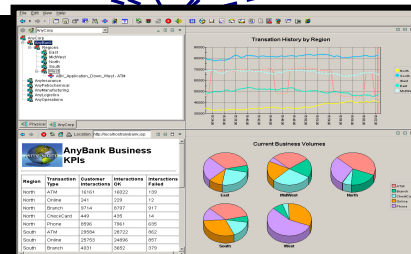
La vue de “bout en bout” de l’infrastructure

Tivoli Enterprise Portal (TEP)



Integrating Products

- Tivoli Enterprise Console
- NetView for z/OS
- System Automation
- Tivoli Workload Scheduler
- Tivoli Monitoring Version 5
- Tivoli Service Level Advisor
- Tivoli Business Systems Manager
- RAD (Micomuse)

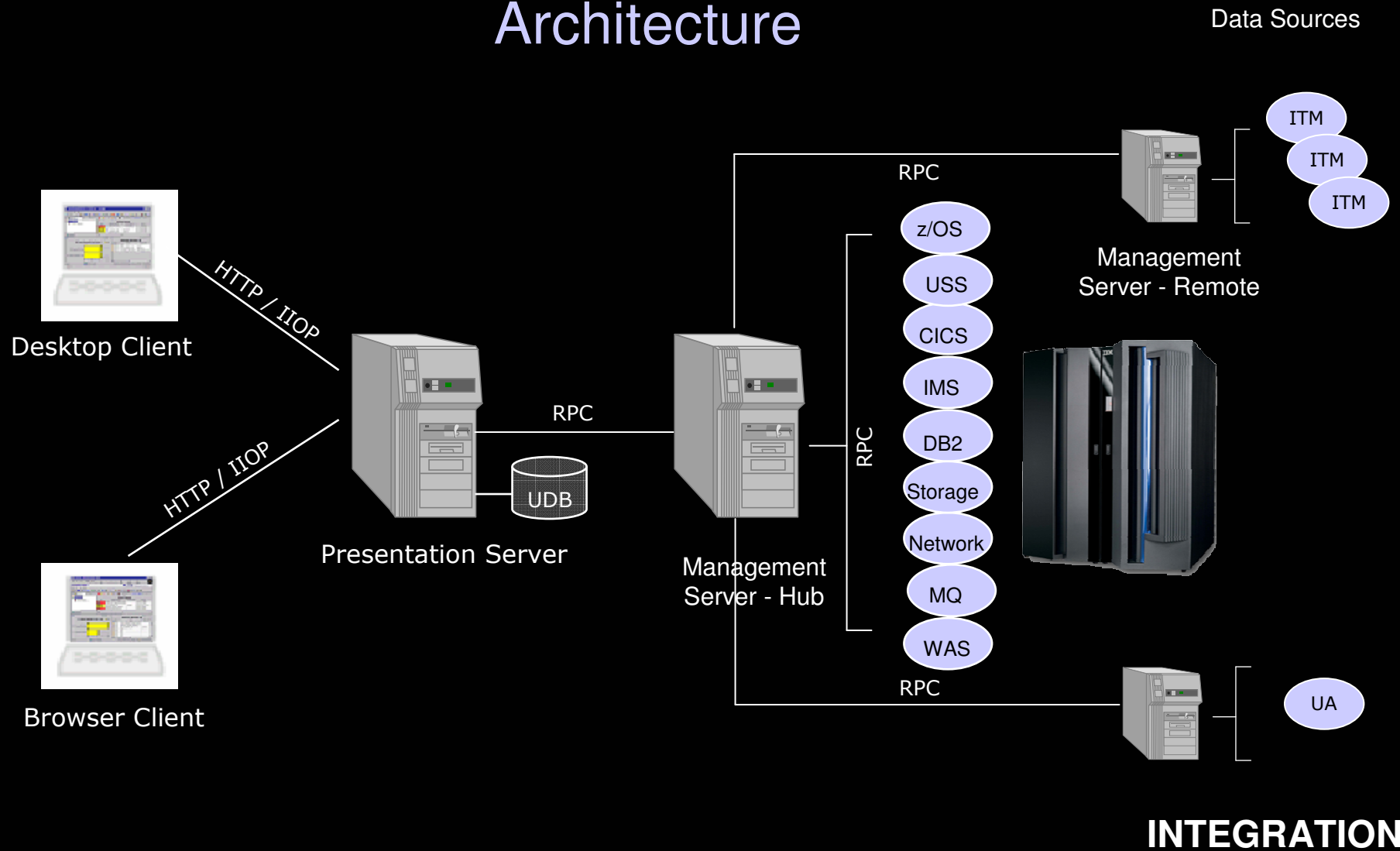


Tivoli Enterprise Portal (TEP)

Embedded Portal for

- Tivoli OMEGAMON for System z
- Tivoli Monitoring Version 6
- IBM OMEGAMON z/OS Management Console
- Tivoli Composite Application Manager Family

Supervision de "bout en bout" Architecture



Versions 2006/2007

- IBM Tivoli for NetView on z/OS 5.2
- IBM Tivoli System Automation V3.1.0
- IBM Tivoli Workload Scheduler 8.3
- IBM Tivoli OMEGAMON XE for Messaging V 6.0
- IBM Tivoli CAM for WebSphere 6.1
- IBM Tivoli CAM for SOA 6.1
- IBM Tivoli CAM for RTT 6.0
- IBM Tivoli OMEGAMON XE for z/OS 4.1.0 (*)
- IBM Tivoli OMEGAMON XE for CICS on z/OS 4.1.0
- IBM Tivoli OMEGAMON XE for IMS on z/OS 4.1.0
- IBM Tivoli OMEGAMON XE for DB2 PE on z/OS 4.1.0
- IBM Tivoli OMEGAMON XE for DB2 PM on z/OS 4.1.0
- IBM Tivoli OMEGAMON XE for Mainframe Networks 4.1.0
- IBM Tivoli OMEGAMON XE for Storage on z/OS 4.1.0
- IBM Tivoli OMEGAMON XE for zVM & Linux 4.1.0
- IBM Tivoli OMEGAMON DE on z/OS 3.1.0
- **IBM Tivoli OMEGAMON z/OS Management Console 4.1.0 (*)**

(*) Disponible 1Q2007

High Availability
Management

Composite Application
Management

Performance
Management

Nouveautés OMEGAMON

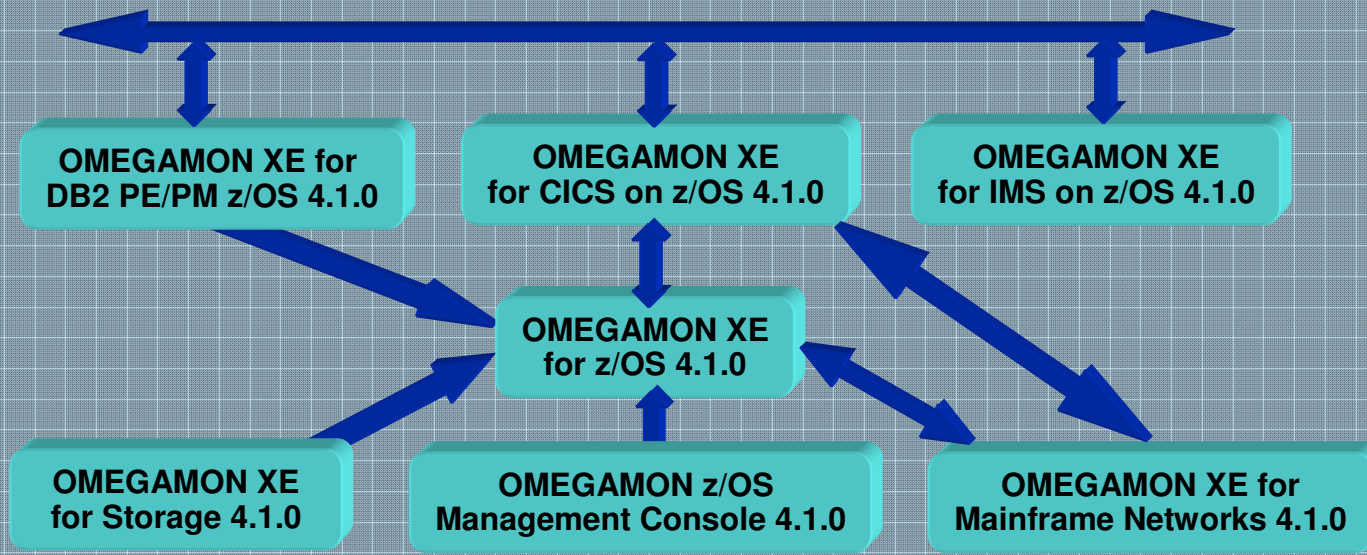
- **Added Globalization to Group 1 languages**
French, German, Italian, Spanish, Portuguese, Chinese (simple & traditional), Japanese, Korean
- **Extended Interoperability via Dynamic Workspace Linking**
intelligently link to other workspaces using the context available at the time of link execution to reduce problem resolution time
- **Added z9 Integrated Information Processor (zIIP) monitoring in OMEGAMON XE on z/OS & XE on DB2 PE/PM on z/OS**
zIIP address spaces, service classes, LPAR data, DDF server thread data, workloads eligible for zIIP that are running on standard CPUs
- **Extended Tivoli Data Warehouse (TDW) with support for Pruning and Aggregation**
Automatic deletion of data and consolidated reporting by groups, dates, etc.
- **Added IBM Support Assistant**
Plug-ins to improve product support
- **IBM Customization Assist Tool (ICAT) enhanced to simplify SMP/E and Run Time Environment (RTE) installation and deployment**

Dynamic Workspace Linking Functionality

Problem: How do I quickly find a potential problem that requires multiple monitoring products?

Scenario: Dynamically link in context from CICS transaction to the associated DB2 thread

Solution: Dynamic Workspace Linking Product provided links & user customized



OMEGAMON XE on z/OS v4.1.0 *Highlights*

Availability
1Q2007

- **DWL**
Linking from OM XE DB2 PE/PM to OM XE on z/OS (enclave), DWL to OMEGAMON XEs, and z/OS Management Console (zMC)
- **Added to XE interface from CUA**
 - I/O rate by address space
 - Real Storage information
- **Tape drive situation support**
- **z/OS Exploitation**
 - Coupling Facility structure duplexing reporting
 - Plex wide zAAP support
- **zIIP processor usage and reporting**
- **Converged OM XE for USS into OM XE on z/OS**

OMEGAMON XE for CICS on z/OS v4.1.0 *Highlights*

▪ **Enhanced CICS TS 3.1**

- URIMAP summary, global counts and details for CICS web clients
- Web Service analysis reports for Web Service Details, Virtual Host Detail, Pipeline Detail, Document Template Detail
- Business Transaction Services (BTS) support for long running processes
- Recovery Manager reporting for application performance tuning
- Enqueue pool details for recovery
- Enterprise Java analysis reporting

▪ **DWL**

CICS Transaction -> DB2 Thread, CICS Transaction Analysis data,
DB2 Thread Exception Detail reports

- **CUA Migration to XE – Service Level Analysis (SLA) and Application Trace Facility (ATF)**
- **Integration with CICS PA**

OMEGAMON XE for IMS on z/OS v4.10 *Highlights*

- **TRF reporting improvements**
 - Increased precision expanding transactions to the millisecond
- **DL/I call reporting for full function and Fast Path WFI regions**
 - Accumulation of all call types issued by an application during transaction processing
- **HALDB support**
 - DB summaries, partition details, VSAM / OSAM statistics
- **DBCTL detailed thread reporting for monitoring activity**
 - Allows detection and prevention of application bottlenecks and response time problems.
- **Enhanced IMS Connect reporting**
 - Provides summary of transaction performance, details about every transaction processed and auto-discovery of IMS Connect tasks
- **Product provided Dynamic Workspace Links (DWL) to OMEGAMON DB2 and CICS**

OMEGAMON XE for DB2 PM/PE on z/OS v4.1.0

Highlights

- **Support for zIIP processor usage**
- **New DB2 Top Ten Volume reports for the System z9 platform**
- **DB2 version 9 day one support**
- **Enhanced Thread Overview**
 - Show additional LOCK information and Changed Pages in all Group Buffer Pools
- **DWL for enclave to OMEGAMON XE on z/OS, OMEGAMON XE for CICS on z/OS and OMEGAMON XE for IMS on z/OS.**

OMEGAMON XE for Storage on z/OS v4.10 *Highlights*

- **New storage toolkit for DFHSM and DFDSS functions**

Database administrators can quickly and easily create commands or schedule actions to maintain and administer DASD storage via the TEP

- **Top ten volume reports**

- **New dataset attribute database**

Granular and versatile reporting capabilities at the dataset level that can be administered via the new storage toolkit function

- **New problem solving workspaces adding to your problem determination capabilities**

Intelligent situation analysis

- **Integration:**

DWL to other OMEGAMON XE on z/OS

Launch of Total Productivity Center (TPC)

OMEGAMON XE for Mainframe Networks on z/OS v4.1.0

Highlights

- **New performance reports**

VTAM buffer pool and address space workspaces

- **Enhanced FTP records**

Provided by the z/OS Communications Server Network Management Interface resulting in performance improvement

- **TN3270 server session workspaces provide performance and availability metrics for systems running z/OS version 1.8**

- **Advanced historical reporting**

Available using both new Tivoli Enterprise Portal workspaces and SQL queries against the Tivoli Data Warehouse database

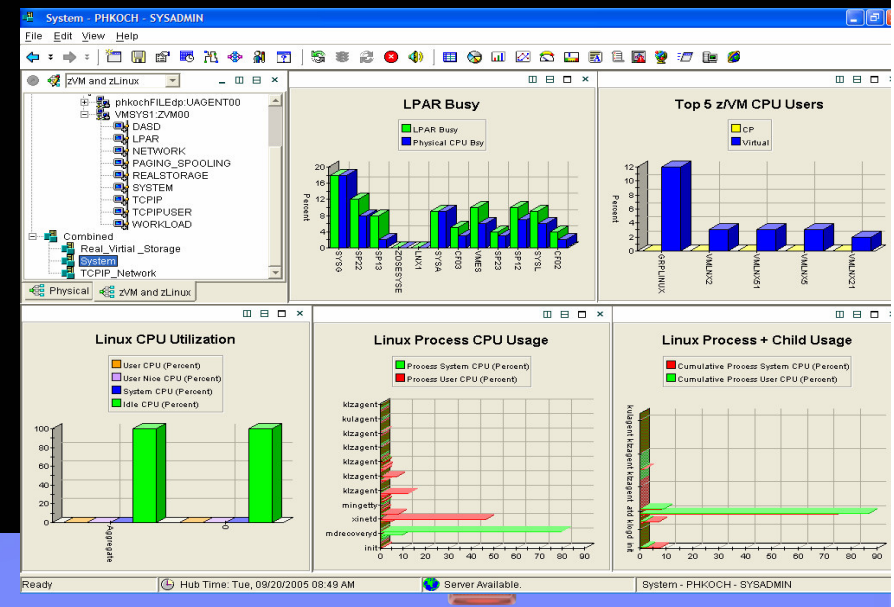
DBCTL detailed thread reporting for monitoring activity allowing the detection and prevention of application bottlenecks and response time problems

- **Enhancements to Enterprise Extender (EE) reporting and High Performance Router (HPR) connections**

- **DWL to OMEGAMON XE on z/OS and NetView on z/OS for extended integration**

OMEGAMON XE for z/VM and Linux v4.1.0

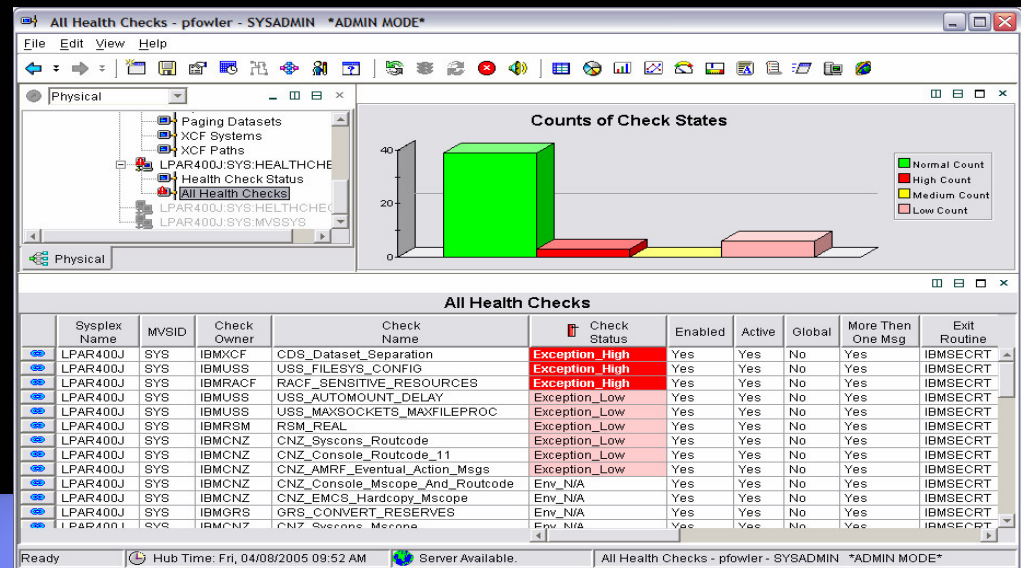
- **Combined offering to monitors z/VM and Linux on System z**
- **Provides workspaces that display**
 - Overall System Health
 - Workload metrics for logged-in users
 - Individual device metrics
 - LPAR Data
- **Composite views of Linux on z running on VM**
- **Integrated with the VM Performance Toolkit**



IBM OMEGAMON z/OS Management Console v4.10 Highlights

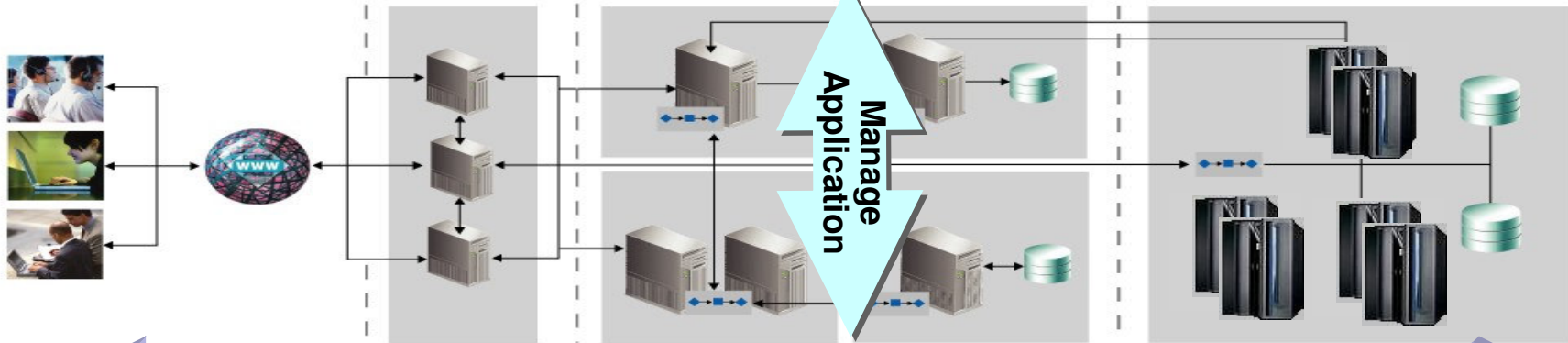
Availability
1Q2007

- Coupling Facility status details
- Coupling Facility Resource Manager (CFRM) status for contention issues
- LPAR Cluster status details
- Unix System Services data and processes reports
- DWL to OMEGAMON XE on z/OS for better integration and problem determination



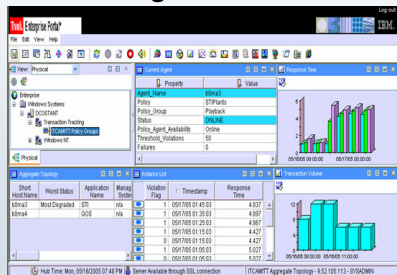
Tivoli Composite Application Management Portfolio

Analyze and Measure Transactions & Services

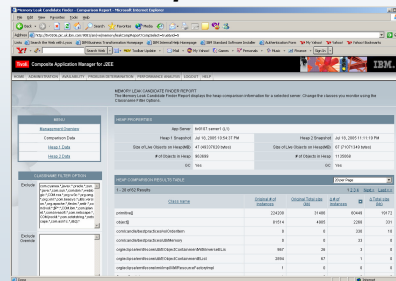


Monitor Infrastructure

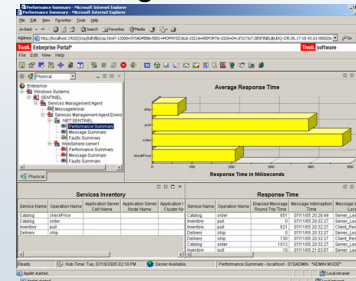
Composite Application Manager for RTT



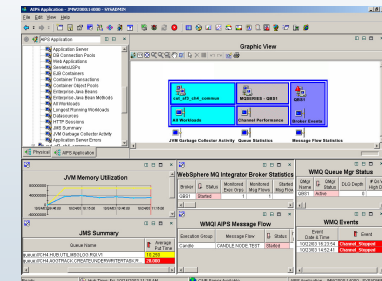
Composite Application Mgr for WebSphere & J2EE



Composite Application Manager for SOA

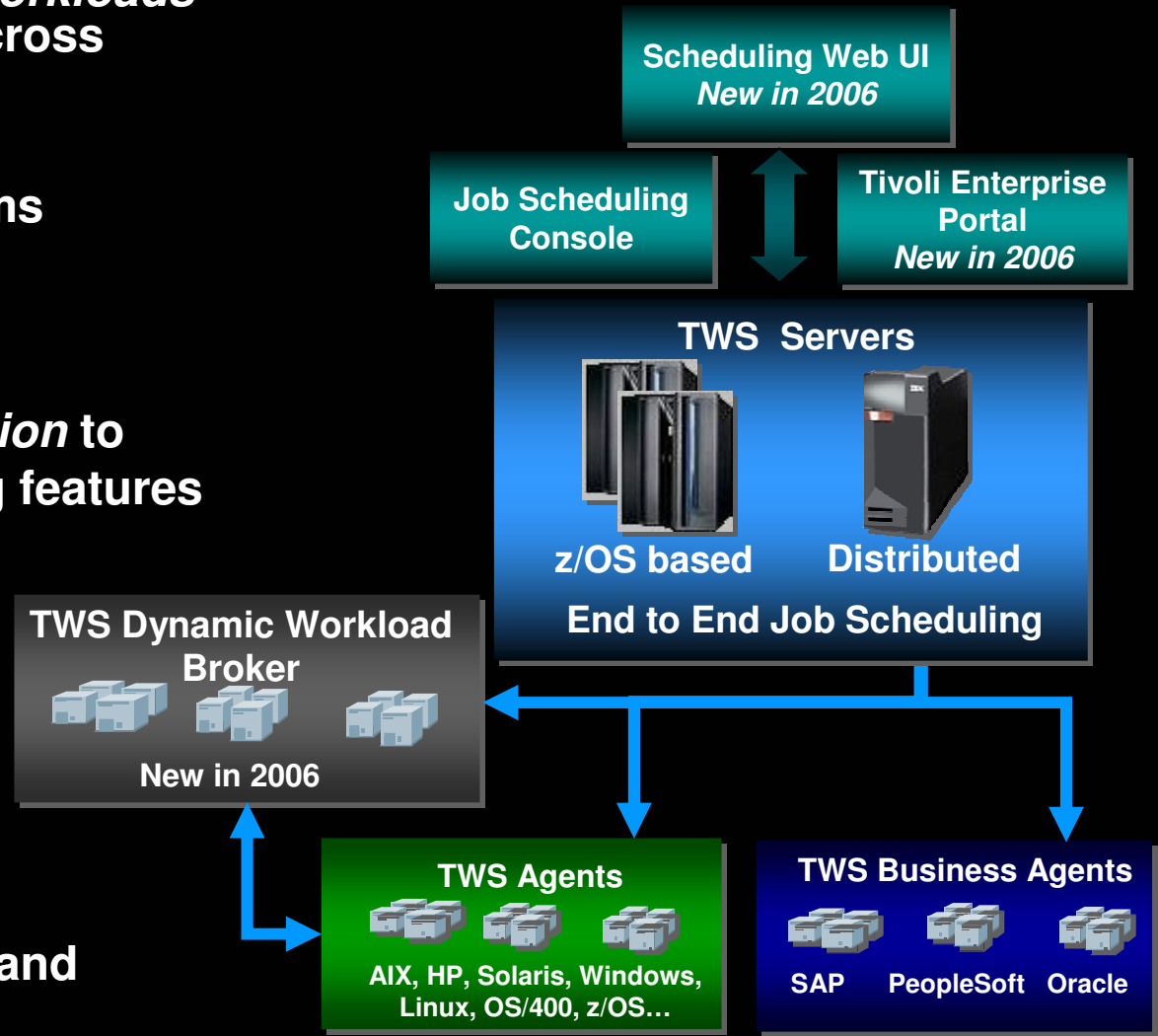


OMEGAMON XE for Messaging



IBM Tivoli Workload Scheduler

- **Single solution to integrate workloads** from multiple applications, across multiple platforms.
- **Improves availability and integrity** of production systems
- **High Availability and Fault Tolerant architecture.**
- **Enhanced TWS-WLM integration** to support new WLM scheduling features
- **New TEP integration** to monitor the status of TWS critical jobs
- **Dynamic real-time workload automation** in addition to traditional calendar and event-based scheduling
- **New Critical Path Monitoring and management** feature for TWS



System Automation & NetView for z/OS

- Enhanced **Tivoli System Automation on z/OS (TSA)** integration with Tivoli Workload Scheduler (TWS)
 - Issue TSA commands from within the TWS console
 - TEP launch in context to TSA
- **TSA Multiplatform** provides integration with IBM High Availability Cluster Multiprocessing (HACMP) and Microsoft Server Cluster Service (MSCS)
 - Centrally manage high availability for composite applications running in heterogeneous environments
- **Tivoli NetView on z/OS** enhanced TEP integration
 - With OMEGAMON XE for Mainframe Networks and new interoperability with OMEGAMON XE for z/OS, DB2 PE/PM, and CICS

Résumé

- Un interface unique de pilotage
- Analyse approfondie des systèmes et sous-systèmes
- Maîtrise des niveaux de service requis à travers des alertes et des Workflows
- Vision de bout en bout de la performance et de la disponibilité des services et de l'infrastructure sous-jacente
- Des agents qui couvrent l'ensemble des composants systèmes et sous systèmes zSeries en architecture SYSplex
- Architecture qui permet d'intégrer le monitoring des nouveaux composants de l'infrastructure
- Architecture qui permet d'intégrer des composants existants





| IBM Corporation / SWG / Tivoli

Virtualisation: « compliance » SoftWare Tivoli Licence & Compliance Manager (ex ISOGON)



© 2006 IBM Corporation

Le coût de la gestion des logiciels

- GARTNER : « *Les entreprises peuvent espérer 30 % d'économies la première année (et entre 5 et 10 % ensuite) après déploiement d'un programme de gestion du parc logiciels (Software Asset Management) »*
- GIGA : “*Les dépenses logicielles sont 7 fois supérieures au dépenses matérielles*”
- IDC : “*Les budgets logiciels augmentent de 13 % plus vite que n'importe quel autre budget*”

La mise en place d'un contrôle des logiciels permet :

Le contrôle des coûts logiciels

Identification et réduction de la non ou sous utilisation de certains logiciels

L'efficacité des consolidations de serveurs

Des mises à jour de SW et HW efficaces

Une force de négociation avec les éditeurs de SW

Évite les pénalités

Réduction des coûts de SW lors de remplacement de logiciels

Amélioration des performances opérationnelles et réduction des coûts de maintenance

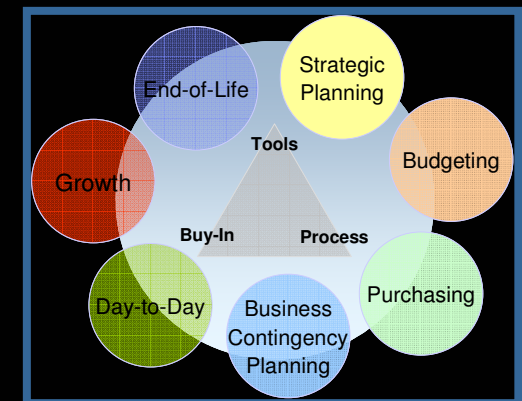
Validation des factures

Continuité du business

Réduction des risques de conformité

Audits de conformité des licences par les éditeurs

Loi de conformité financière



Edictée en 2002 suite à l'affaire de Enron puis au scandale de Worldcom, la **loi Sarbanes-Oxley** (appelée aussi SARBOX ou SOX ou LSO pour les français) vise à améliorer la précision et la fiabilité des publications financières des entreprises cotées en Bourse aux Etats-Unis. L'objectif est de mieux protéger les investisseurs pour rétablir leur confiance dans le marché.

Cette loi est guidée par trois grands principes : l'exactitude et l'accessibilité de l'information, la responsabilité des gestionnaires (CEO et CFO) et l'indépendance des auditeurs externes. Elle implique notamment l'**utilisation de l'informatique comme outil de gestion et de contrôle financier**, avec l'obligation d'assurer la sécurité de ce même système informatique.

La loi Sarbanes-Oxley est entrée en vigueur en 2005 pour tous les grands groupes aux Etats-Unis, et concerne dès cette année l'ensemble de leurs filiales à l'étranger.

Les priorités de la gestion des logiciels

De quels logiciels je dispose?

Découverte automatique des logiciels installés

Quels logiciels sont utilisés? Pourquoi est-ce différent de ce qui est dans les contrats?

Utilisation de la surveillance: mesure de l'utilisation effective

Combien coûte chaque logiciel maintenant et dans un futur proche?

Gestion des contrats: comparer l'utilisation réelle avec le contrat en cours

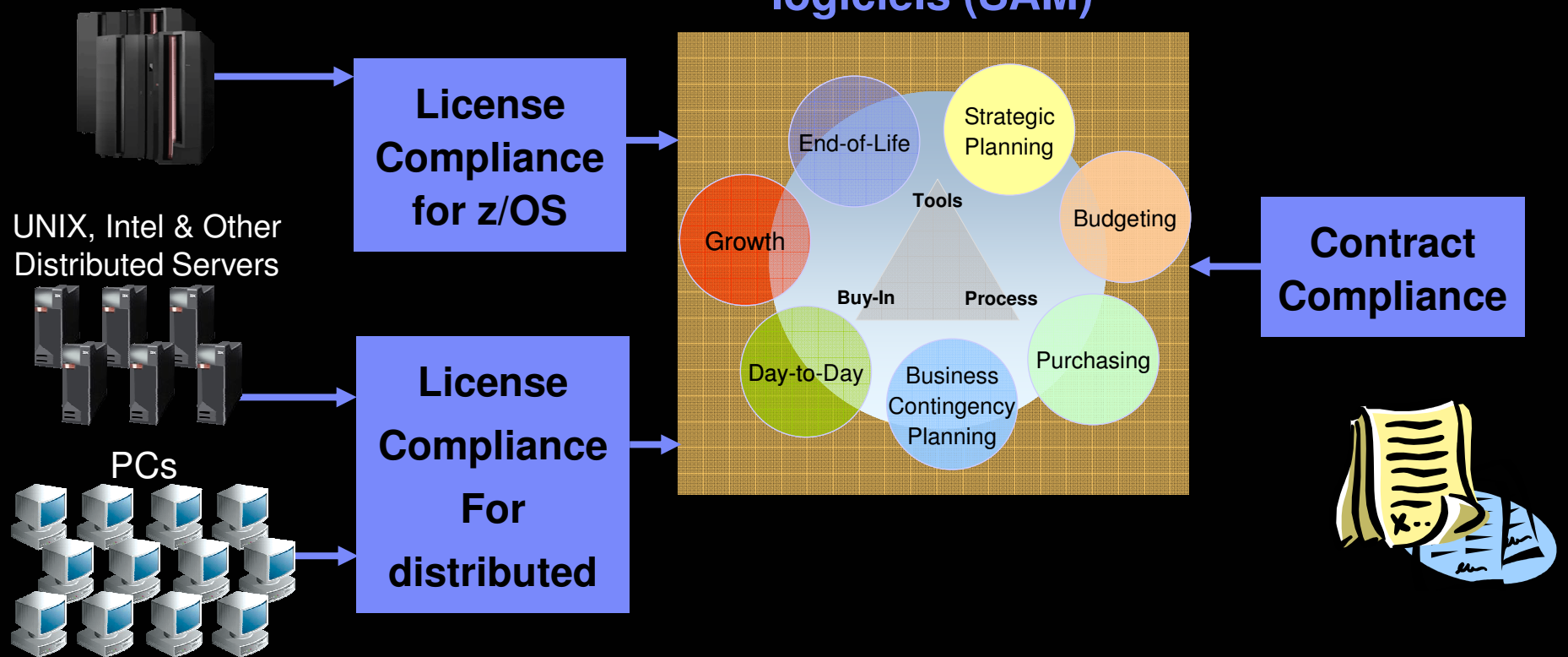
Une réponse à ces trois questions est nécessaire pour l'alignement des coûts informatique avec les enjeux de l'entreprise.

La gestion logicielle : une vision de bout en bout

Inventaire & Utilisation

Contrats & Finances

Activités Gestion des logiciels (SAM)



Les différentes situations

Condition

- Je l'ai installé
- Je l'utilise
- J'ai un contrat

Benefit

Je valide mes factures, j'améliore la négociation du contrat.

Condition

- Je l'ai installé
- Je l'utilise
- ~~J'ai un contrat~~

Benefit

Je vérifie la conformité de mes contrats.

Condition

- Je l'ai installé
- ~~Je l'utilise~~
- J'ai un contrat

Benefit

Je résilie les licences des produits inutilisés.

Condition

- ~~Je l'ai installé~~
- ~~Je l'utilise~~
- J'ai un contrat

Benefit

Je supprime la maintenance.

Tivoli End-to-End IT Asset Management Solution

“Enterprises that begin an asset management program experience up to a 30% reduction in costs the first year.. and continue savings of 5-10% for the next 5 years” – Gartner

Problèmes “Business”

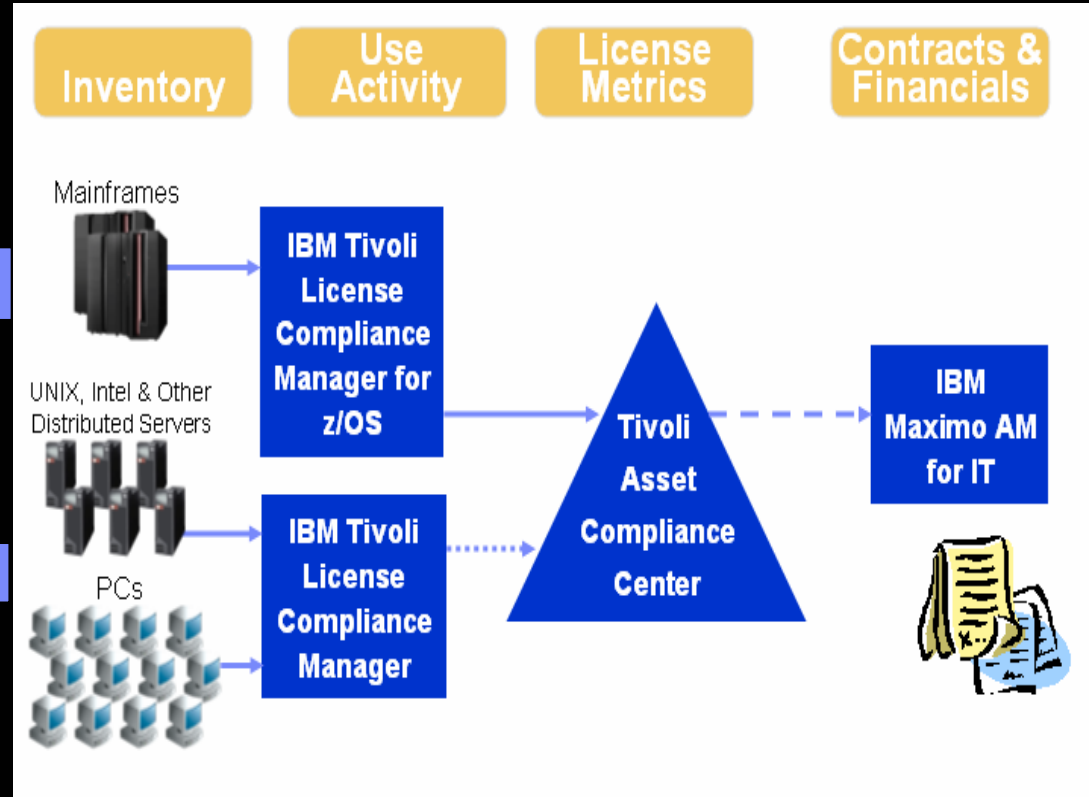
- Les coûts SW sont difficiles à maîtriser
- Risques de coûts inattendus provoqués par des réajustements non prévus, voire des pénalités de non conformité
- Difficulté de savoir “qui utilise quel SW” de façon à gérer la dépense de manière efficace
- Difficulté d’ajuster la dépense SW avec les besoins “business”

Valeur ajoutée

- TLCM permet de contrôler les coûts software et les risques de non conformité au niveau des licences, ce qui libère du budget pour les projets prioritaires
- Aide les entreprises à respecter les standards comptables les plus stricts (ex: Sarbanes-Oxley, Basel II)

Synthèse: Où sont les gains potentiels ?

- Réduction budgétaires
- Accroissement des coûts
- Négociations “tendues”
- Intégration des informations contractuelles avec l’inventaire SW
- Optimisation du “Capacity Planning”
- Réduction des coûts de maintenance
- Consolidations HW & SW plus efficaces





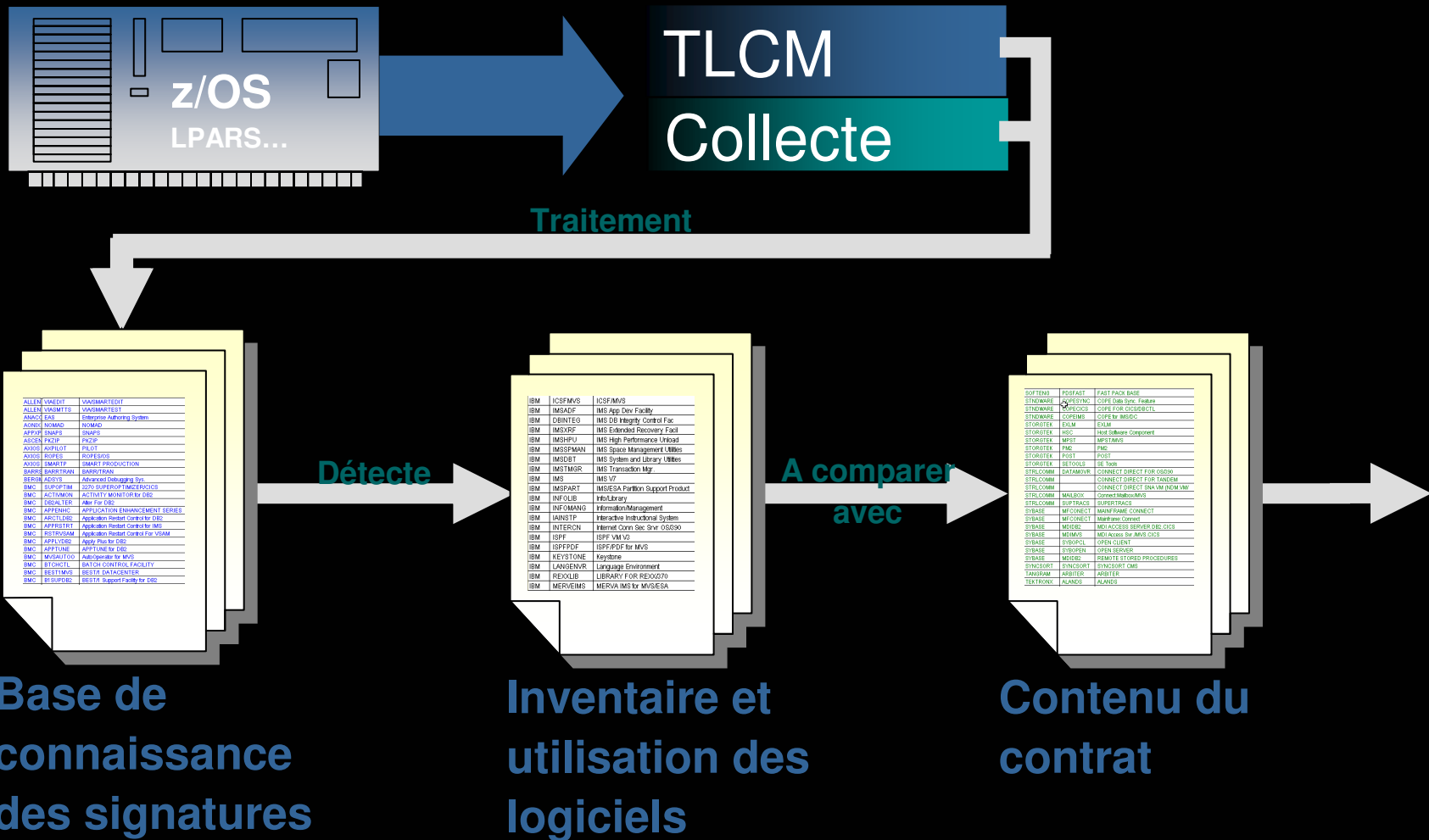
| IBM Corporation / SWG / Tivoli

Tivoli License Compliance Manager for z/OS



© 2006 IBM Corporation

L'offre de bout en bout : de l'inventaire au contrat

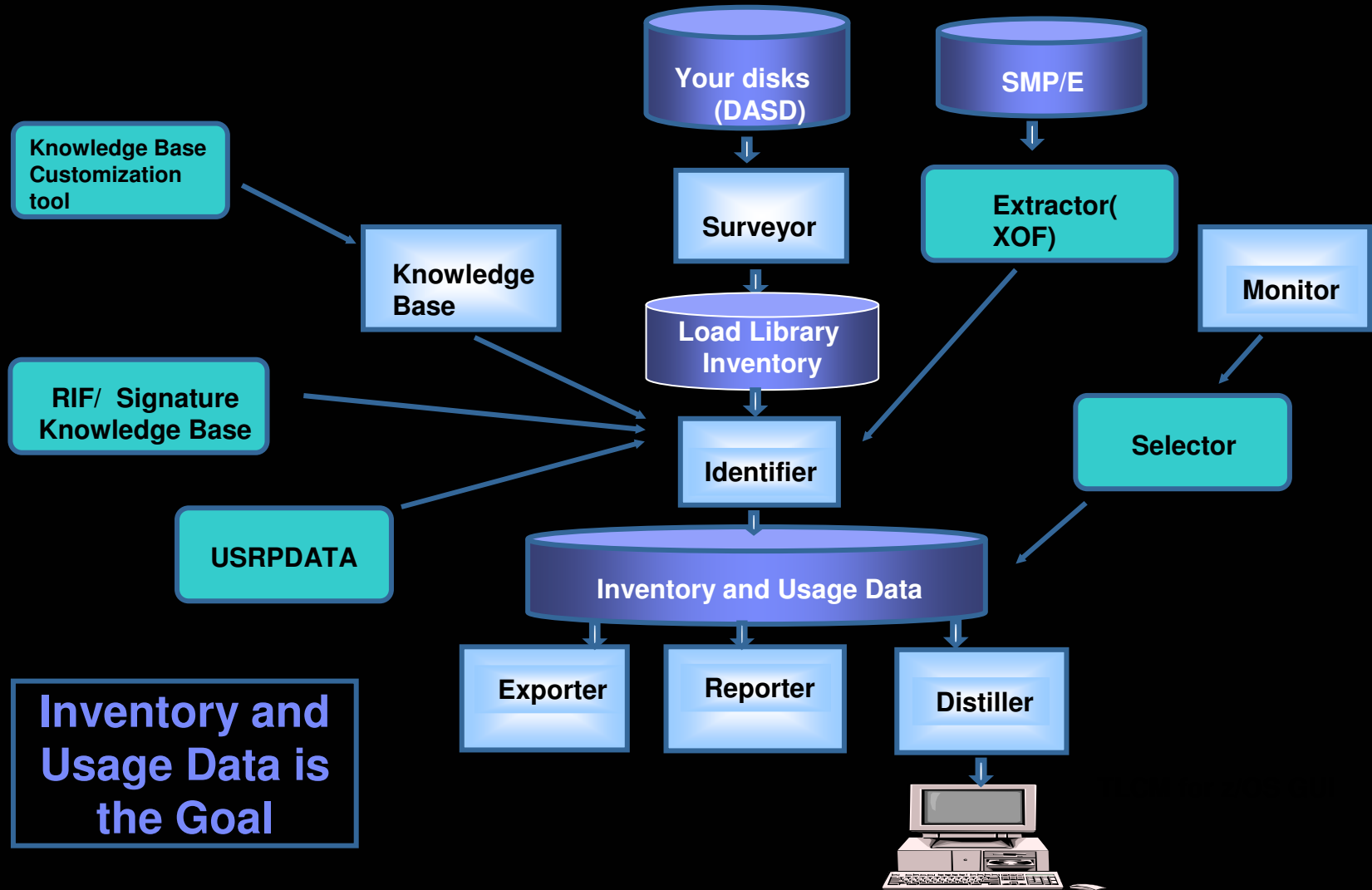


ALLEN DMSMT	VMSDMSMTST
ALLEN VMSMTS	VMSDMSMTST
AMACCS EAB	Enterprise Authoring System
ARCMS NOMAD	NOMAD
APPRO SHAPD	SHAPD
ARCSA PAFIP	PAFIP
ARCSA ADPLST	PLIST
ARCSA BUREV	BUREV
ARCSA SMDSTP	SMART PRODUCTION
BARF BARFTRAN	BARFTRAN
REBOR ARCVT	ARCSA Cataloging Sys
BMG SUPRPTM	SDO SUPPORT FACILITY/CSB
BMG ACTMANN	ACTMANN MANAGER for OS/390
BMG DEQUALER	Abbr File (OS/390)
BMG APPENIC	APPLICATION ENHANCEMENT SERIES
BMG FACCLDSE	Application Product Control for OS/390
BMG APPRSTRT	Application Product Control for IMS
BMG BSTRNSM	Application Product Control For VSAM
BMG APPLVCSB	Apply Plus for OS/390
BMG PARTIME	APPTIME for OS/390
BMG MVSALTOO	Autopatcher for MVS
BMG BTDCHTL	BATCH CONTROL FACILITY
BMG BESTMAG	BESTER BACKUP/RECOVER
BMG BLSUPDSE	BESTIT Support Facility for OS/390

IBM ICSPMVS	ICSPMVS
IBM IMSADP	IMS App Dev Facility
IBM DBINTEG	IMS DB Integrity Control Fac
IBM IMSXRF	IMS Extended Recovery Facilt
IBM IMSHPH	IMS High Performance Upload
IBM IMSSPMAN	IMS Space Management Utilities
IBM IMSD8T	IMS System and Library Utilities
IBM IMSTMR	IMS Transaction Mgr
IBM IMS	IMS V2
IBM IMSPART	IMSESA Partition Support Product
IBM INFOLIB	InfoLibrary
IBM INFOMANO	Information Management
IBM IAINSTP	Interactive Instructional System
IBM INTERCON	Internet Conn Svc Syst OS/390
IBM ISPF	ISPF VMI V2
IBM ISPFPOF	ISPFPOF for MVS
IBM KEYSTONE	Keystone
IBM LANGENVIR	Language Environment
IBM RESOLB	LIBRARY FOR RESOLB/390
IBM MERVEMVS	MERVAIMS for MVS/ESA

SOFTENS	PROFAST	FAST PACK BASE
STRSWARE	STRSCOPE	CORE FOR OS/390/64
STRSWARE	COREMS	CORE for IMS/DC
STRSWARE	EXAM	EXAM
STRSWARE	ISDC	Host Software Component
STRSWARE	IMSP1	IMPTIBMS
STRSWARE	FMG	FMG
STRSWARE	POST	POST
STRSWARE	STRTOOLS	STR Tools
STRCOMM	DATAMOUR	CONNECT DIRECT FOR OS/390
STRCOMM		CONNECT DIRECT FOR TRANSM
STRCOMM		CONNECT DIRECT (ENR-VMI INCL-VMI)
STRCOMM	MAILBOX	Control Mailbox/MS
STRCOMM	SUPTRACS	SUPERTRACS
STRBASE	MFCONNECT	MANF PANE CONNECT
STRBASE	MFCONNECT	ManPane Connect
STRBASE	MDIDER	MDI ACCESS SERVER (SEI/CSB)
STRBASE	MDIOWS	MDIOWS for MVS/OS/390
STRBASE	STRPOLP	OPEN CLIENT
STRBASE	STRSPRN	OPEN SERVER
STRBASE	MDIDER	REMOTE STORED PROCESURES
STRBASE	STRSORT	STRSORT CMS
STRBASE	PARITER	PARITER
STRBASE	ALANDS	ALANDS

TLCM for z/OS Components overview





IBM Corporation / SWG / Tivoli

Tivoli License Compliance Manager



© 2006 IBM Corporation

IBM Tivoli License Compliance Manager

- Gestion des droits d'usage
- Inventaire des logiciels
- Suivi de l'utilisation des logiciels (Technologie brevetée)
- Respect des règles d'utilisation (Technologie brevetée)
- Administration par interface Web
- Intégration avec les applications tierces par XML
- Gestion des contrats
- Compte-rendus et rapports

Valeur de « Licence Compliance Manager » pour l'entreprise

- Permet de maintenir la conformité avec les termes et conditions des contrats de licence
 - En automatisant le suivi de l'usage (sans nécessiter que les applications soient instrumentées)
 - En gérant les clauses contractuelles d'expiration et de renouvellement
- Réduit les coûts d'utilisation des logiciels
 - R/I par économie sur les licences logiciels
 - Eviter les pénalités** pour couverture insuffisante en licences ou en maintenance
 - Eviter le sur-équipement** en licences ou en maintenance

“License management is becoming a priority because IT budgets are scaling back and that's a potential savings area.”
Audrey Rasmussen, VP, Enterprise Management Associates

Architecture

- **Admin Server**

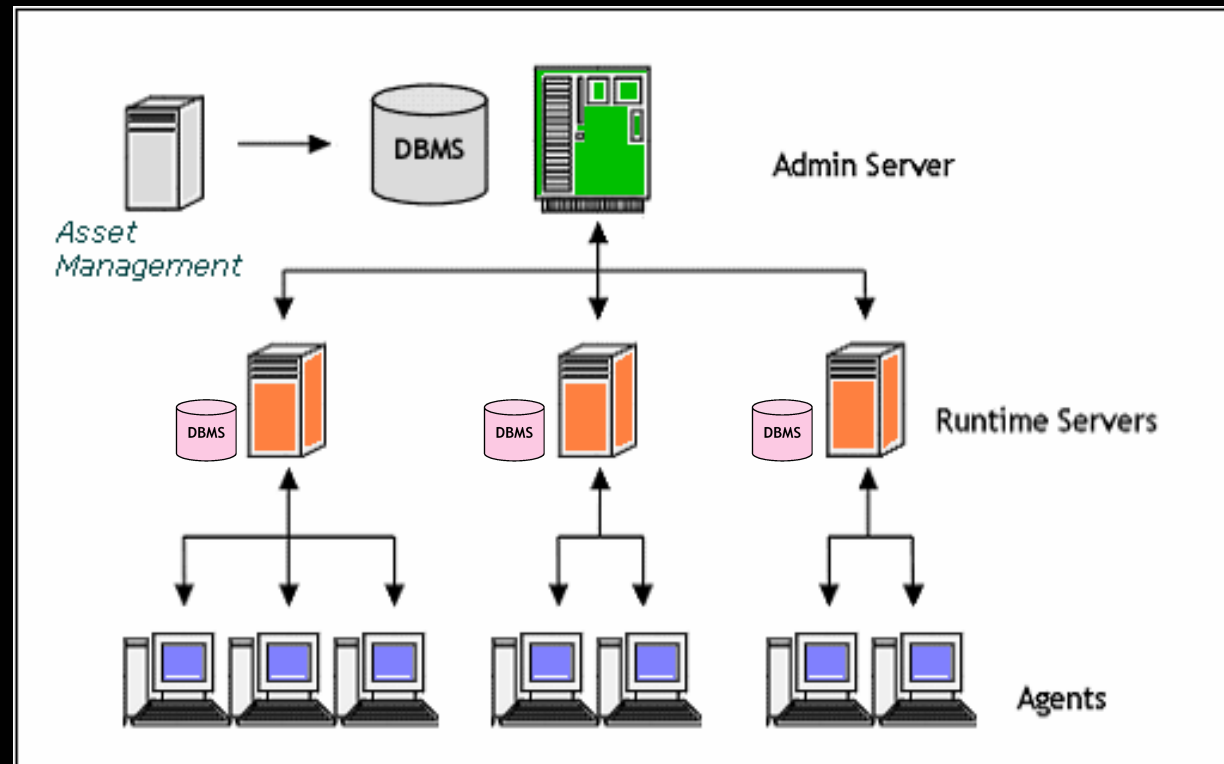
Dépôt de l'historique
Administration
Rapports

- **Runtime Server**

Dépôt du temps réel
Mesure de l'usage et respect
des règles
Rapports

- **Agents TLM**

Collecte des informations
Respect des règles

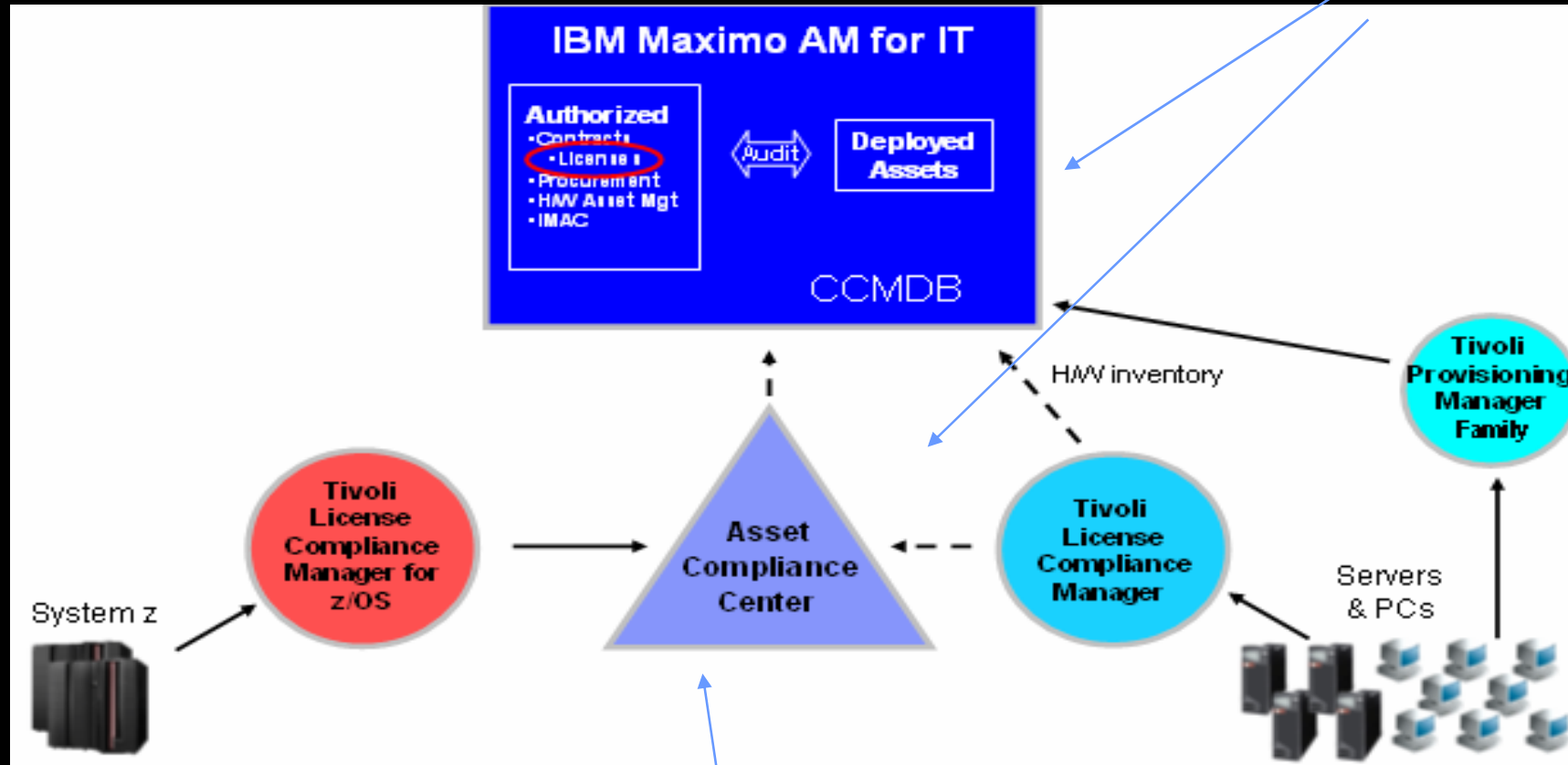


- WebSphere Application Server
- DB2 Universal Database

IBM Maximo AM for IT Roadmap

Q2 2007

Software Contracts vers license view



Q4 2006

TLCMz 4.2 and TACC

Q1 2007

TLCM 2.3 and TLCMz 4.2 Fix Pack

SAM en résumé – D'où viennent les gains?

Réduction des budgets logiciels

- Coûts réels des mises à jour
- Levier puissant pour la négociation de contrats

Intégration des données liées aux contrats et aux licences

- Optimisation du « CPU Capacity Planning »
- Réduction des coûts de support SW
- Plus d'efficacité dans les consolidations HW/SW



“Les Entreprises qui démarrent une gestion des actifs font l'expérience de gains importants allant de 30% de réduction des coûts la première année et de 5-10% les 5 années suivantes – Gartner



IBM Corporation / SWG / Tivoli

Conclusion



© 2006 IBM Corporation

Les bénéfices de la démarche IBM IT Service Management

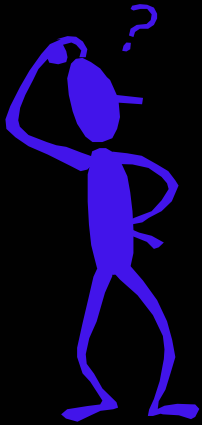


Une meilleure manière de gérer l'informatique

- **Délivrer** des services de qualité – Alignés avec les priorités métier.
- Des processus **mesurables** – De bout en bout.
- **Valoriser** les investissements existants – Meilleure collaboration et intégration entre technologie, information et personnes.
- Accroître la **productivité** de l'organisation en intégrant les domaines par des processus communs.

“Service Management is about transforming IT to operate like a business...”.

—Pentagon IT Agency,
John Hanson



Tivoli. software

Questions ?

