

Improving Problem & Incident Management

IBM Tivoli OMEGAMON XE Monitoring

Tivoli software



Agenda

- **OMEGAMON XE: What's available today**
- **OMEGAMON XE v4.10: New announcements for the latest in monitoring**
- **IT Service Management Solutions**
- **Summary**



OMEGAMON XE: What's Available Today?



System z Monitoring for Operating Systems & Performance

Past Product	Transition	Current Product	Value Proposition and Notes
OMEGAMON XE for OS/390		OMEGAMON XE on z/OS Shipped as 3.1.0	Merges XE & Sysplex into single package. To provide z/OS R1.7 support day 1.
OMEGAMON XE for Sysplex			
OMEGAMON XE for Cryptographic Coprocessor			
OMEGAMON XE for USS		OMEGAMON XE for USS	Understand and manage performance of USS, an enabler of many applications and subsystems (WAS, TCP/IP, SAP...)
OMEGAMON XE for Linux on zSeries		ITM for Linux on z OMEGAMON for z/VM	Planning on a new XE converged product in 2006
OMEGAMON for VM			
OMEGAMON DE for OS/390		OMEGAMON DE on z/OS Shipped as 3.1.0	Integrated performance dashboard for all zSeries systems and subsystems.



System z Monitoring For Middleware And Databases

Past Product	Transition	Current Product	Value Proposition and Notes
OMEGAMON XE for DB2 on z/OS	}	OMEGAMON XE for DB2 Performance Expert on z/OS Shipped as 3.1.0	Best-of-breed DB2 monitor from combination of OMEGAMON XE and DB2 PE. Extended DB2 V8 support. DB2 and DB2plex monitors in a single package.
DB2 PE			
OMEGAMON XE for DB2 on z/OS	}	OMEGAMON XE for DB2 Performance Monitor on z/OS Shipped as 3.1.0	Best-of-breed DB2 monitor from combination of OMEGAMONXE and DB2 PM.
DB2 PM			
OMEGAMON XE for CICS	}	OMEGAMON XE for CICS on z/OS (Aug. 2005) Shipped as 3.1.0	Exploitation of CICS Transaction Server V2.3 and the upcoming V3 CICS Dispatcher. CICS and CICSplex monitors in a single package.
OMEGAMON XE for CICSplex			
CICS PM (Plex and non-Plex)			
OMEGAMON XE for IMS	}	OMEGAMON XE for IMS on z/OS (Dec. 2005) Shipped as 3.1.0	Integration with IMS Tools. IMS and IMSplex monitors in a single package. Provides shared Queues support. IMS V9 exploitation.
OMEGAMON XE for IMSplex			
IMS PM (Plex and non-Plex)			
CICS Performance Analyzer	→	CICS Performance Analyzer	Insight for performance tuning and planning and managing capacity.
IMS Performance Analyzer	→	IMS Performance Analyzer	Comprehensive performance analysis and tuning help for IMS TM and DB.



Monitoring For Storage And Mainframe Networks

Past Product	Transition	Current Product	Value Proposition and Notes
OMEGAMON XE for Storage		OMEGAMON XE for Storage Shipped as 3.1.0	Provides discovery, monitoring and management of z/OS attached storage devices and files across the enterprise. Tracks capacity and usage changes over time enabling capacity management.
IBM Tivoli Storage Optimizer (ITSO)		IBM Tivoli Storage Optimizer (ITSO)	Provides competitive storage administration functions.
OMEGAMON XE for Mainframe Networks		OMEGAMON XE for Mainframe Networks (Nov. 2005) Shipped as 3.1.0	Comprehensive Mainframe TCP/IP and SNA network monitoring helps users understand and manage network performance throughout the entire datacenter. Utilizes the Comm Server NMI API for high performance
ITM for Network Performance			



Monitoring For Distributed Systems, Databases, Applications

Past Product	Transition	Current Product	Value Proposition and <i>Notes</i>
OMEGAMON XE for Windows Servers		IBM Tivoli Monitoring (ITM) Shipped as 6.1.0	IBM Tivoli Monitoring provides monitoring for essential system resources to detect bottlenecks and potential problems, and to automatically recover from critical situations. Provides automated out-of-the-box best practices
OMEGAMON XE for UNIX			
OMEGAMON XE for Linux on Intel and zSeries			
OMEGAMON XE for OS/400			
IBM Tivoli Monitoring			
Universal Agent			
OMEGAMONXE for SAP R/3		ITM for Applications (mySAP, Siebel) Shipped as 6.1.0	Provides monitoring for SAP and Siebel applications to detect bottlenecks and potential problems, and to automatically recover from critical situations. Provides automated out-of-the-box best practices.
ITM for Applications			
OMEGAMONXE for Distributed Databases		ITM for Databases Shipped as 6.1.0	Provides monitoring for database resources to detect bottlenecks and potential problems, and to automatically recover from critical situations. Provides automated out-of-the-box best practices.
ITM for Databases			
ITM for Message and Collaboration		ITM for Messaging and Collaboration	Automates critical Notes activities that consume a Notes administrator's time: system profiling, configuration and deployment, network management, and error recovery.
IntelliWatch for Unix and Windows		IntelliWatch for Unix and Windows	



Composite Application Management

Past Product	Transition	Current Product	Value Proposition And <i>Notes</i>
TMTF (Dist & z/OS)		ITCAM for Response Time Tracking Shipped as 6.0	IT CAM for RTT identifies and isolates performance problems using detailed transaction traces to isolate problems and proactively monitor end user response times to ensure SLAs are met.
ETEWatch			
Web Segment Analyzer		ITCAM for RTT (2006)	WSA support will be added to ITCAM RTT during 2006
OM XE for WBI (Dist & z/OS)		OMEGAMON XE for Messaging	Enables quick diagnosis of problems within the WebSphere Business Integration infrastructure Renamed OMEGAMON XE for Messaging
OM XE for WMQ (Dist & z/OS)			
OM XE WICS (Dist only)			
ITM for Business Integration		OM XE for Messaging	ITMfBI DBCS capability available in XE during 2006..





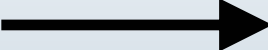
Event Correlation and Automation

Past Product	Transition	Current Product	Value Proposition and <i>Notes</i>
System Automation for z/OS		System Automation for z/OS	<p>SA z/OS is the primary System z automation and high availability solution.</p> <p>Tivoli will continue support and enhance AF/OPERATOR, AF/IRM and OMEGACENTER Gateway bases to ensure customer investments are protected and no change of automation platform is forced on users.</p>
System Automation for Multiplatforms		System Automation for Multiplatforms	
AF/OPERATOR		AF/OPERATOR	
OMEGACENTER Gateway		OMEGACENTER Gateway	
AF/REMOTE		AF/REMOTE	Complements SA and AF solutions by remotely managing data centers and alert notifications
AF/IRM (Service)		AF/IRM (Service)	Provides a full suite of pre-coded automation applications to extend automation capabilities and provide support for custom REXX automation scripts
Tivoli NetView for z/OS		Tivoli NetView for z/OS	Comprehensive set of tools for maintaining complex, multivendor, multiplatform networks and systems from a single point of control
Tivoli Enterprise Console (TEC)		Tivoli Enterprise Console (TEC)	Root cause analysis via system, network, application, security event collection, filtering; correlation to help in problem ID

* AF/Advanced Notification is a 3rd Party Product available from Proxima



Business Service Management

Past Product	Transition	Current Product	Value Proposition and Notes
Business Systems Mgr (TBSM)		Business Systems Mgr (TBSM)	Helps IT operations teams to maximize their effectiveness by aligning their resources (staff and technology) to the priorities of the business.
Service Level Advisor (TSLA)		Service Level Advisor (TSLA)	Helps enterprise customers simplify the definition, measurement, and reporting of service level agreements
Decision Support for z/OS		Decision Support for z/OS	A flexible reporting tool that can correlate systems performance data to help improve the economic performance of the IT investment.



OMEGAMON XE v4.10: New announcements for the latest in monitoring



New Releases of IBM Tivoli Products

All new product releases are planned for GA during 4Q06 except as noted

Monitoring

IBM Tivoli OMEGAMON XE

- ▶ z/OS V4.1.0 (*First Quarter 2007 availability*)
- ▶ CICS on z/OS V4.1.0
- ▶ IMS on z/OS V4.1.0
- ▶ DB2 Performance Expert on z/OS V4.1.0
- ▶ DB2 Performance Monitor on z/OS V4.1.0
- ▶ Mainframe Networks V4.1.0
- ▶ Storage on z/OS V4.1.0
- ▶ z/VM and Linux V4.1.0
- IBM OMEGAMON z/OS Management Console V4.1.0 (*First Quarter 2007 availability*)
- Installation and Customization Assistance Tool (ICAT) V3.1.0 – a component with OMEGAMON products
- Tivoli NetView for z/OS V5.2 Sparkler Release
- Web Access v1.3 for InfoMan Sparkler Release



New Releases of IBM Tivoli Products

All new product releases are planned for GA during 4Q06 except as noted

Application Management

- IBM Tivoli Composite Application Manager (ITCAM)
 - ▶ WebSphere V6.1 and ITCAM for J2EE V6.1
 - ▶ SOA V6.1
 - ▶ Response Time Tracking V6.1 (Available now)
- IBM Tivoli Performance Modeler V2.3

Automation

- IBM Tivoli System Automation
 - ▶ z/OS 3.1 – sparkler for TWS integration
 - ▶ Multiplatforms v2.2
- Tivoli Workload Scheduler
 - ▶ z/OS v8.2 – sparkler for TSA integration
 - ▶ z/OS v8.3

Storage

- IBM Backup and Restore Manager for z/VM V1.2.0

Security

- Tivoli Federated Identify Manager for z/OS v6.1 (Available now)



Major New Common OMEGAMON Capabilities

- **Delivered CCMDB TEP Discovery Library Adapter**
- **Added Globalization to Group 1 languages**
 - ▶ French, German, Italian, Spanish, Portuguese, Chinese (simple & traditional), Japanese, Korean
- **Extended Interoperability via Dynamic Workspace Linking**
 - ▶ intelligently link to other workspaces using the context available at the time of link execution to reduce problem resolution time
- **Added zIIP monitoring by OMEGAMON XE on z/OS & XE on DB2 PE/PM on z/OS**
 - ▶ Day 1 support via service for OMEGAMON XE z/OS and DB2 PE/PM V3.1.0 via PTF and enhanced support in 4.1.0
 - ▶ zIIP address spaces, service classes, LPAR data, DDF server thread data, workloads eligible for zIIP that are running on standard CPUs



Major New Common OMEGAMON Capabilities (cont'd)

- **Extended Tivoli Data Warehouse (TDW) with support for Pruning and Aggregation**
 - ▶ Automatic deletion of data and consolidated reporting by groups, dates, etc.
- **Added IBM Support Assistant**
 - Plug-ins to improve product support
- **Added Problem Determination Guides**
 - ▶ Help customers diagnose and solve operational problems
- **Support for Agent Versioning added**
 - ▶ Multi-product version support enable incremental deployment of OMEGAMON 4.1.0 products
- **IBM Customization Assist Tool (ICAT) enhanced to simplify SMP/E and Run Time Environment (RTE) installation and deployment**

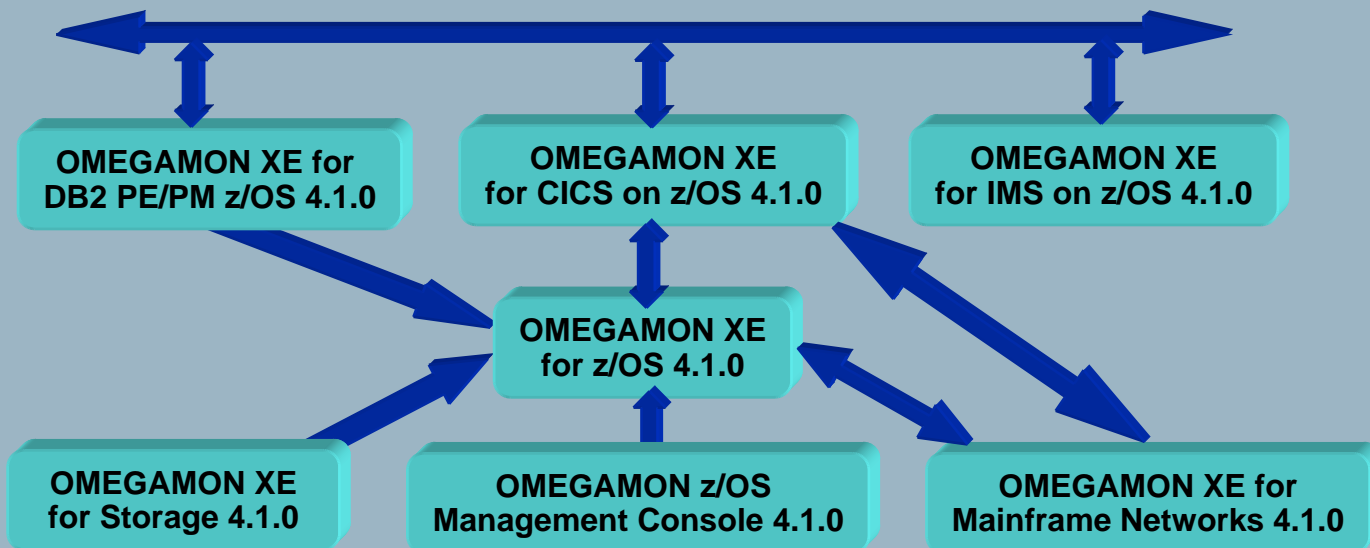


Dynamic Workspace Linking Functionality

Problem: How do I quickly find a potential problem that requires multiple monitoring products?

Scenario: Dynamically link in context from CICS transaction to the associated DB2 thread

Solution: Dynamic Workspace Linking Product provided links & user customized



OMEGAMON XE 4.10 – Enhancing the Portfolio

New Release Objectives

- **Customer improvements and satisfaction**
 - ▶ Globalization
 - ▶ Exploitation of new OS and middleware releases
 - ▶ Extended capabilities
- **Portfolio Simplification**
 - ▶ Candle Management Workstation and OMEGAMON II continued movement to XE
 - ▶ Merging of functionality in product suites where it makes sense
- **Integration**
 - ▶ Dynamic Workspace Linking
 - ▶ Launch in Context with TSLA, TBSM and others
 - ▶ Tivoli Data Warehouse – pruning and aggregation
- **Serviceability**
 - ▶ Problem Determination Guides
 - ▶ ICAT enhancements



Major New Common OMEGAMON Capabilities

- **Delivered CCMDB TEP Discovery Library Adapter**
- **Added Globalization to Group 1 languages**
 - ▶ French, German, Italian, Spanish, Portuguese, Chinese (simple & traditional), Japanese, Korean
- **Extended Interoperability via Dynamic Workspace Linking**
 - ▶ intelligently link to other workspaces using the context available at the time of link execution to reduce problem resolution time
- **Added zIIP monitoring by OMEGAMON XE on z/OS & XE on DB2 PE/PM on z/OS**
 - ▶ Day 1 support via service for OMEGAMON XE z/OS and DB2 PE/PM V3.1.0 via PTF and enhanced support in 4.1.0
 - ▶ zIIP address spaces, service classes, LPAR data, DDF server thread data, workloads eligible for zIIP that are running on standard CPUs



Major New Common OMEGAMON Capabilities (Cont)

- **Extended Tivoli Data Warehouse (TDW) with support for Pruning and Aggregation**
 - ▶ Automatic deletion of data and consolidated reporting by groups, dates, etc.
- **Added IBM Support Assistant**
 - Plug-ins to improve product support
- **Added Problem Determination Guides**
 - ▶ Help customers diagnose and solve operational problems
- **Support for Agent Versioning added**
 - ▶ Multi-product version support enable incremental deployment of OMEGAMON 4.1.0 products
- **IBM Customization Assist Tool (ICAT) enhanced to simplify SMP/E and Run Time Environment (RTE) installation and deployment**



OMEGAMON XE on z/OS v4.10 *Highlights*

**Availability
1Q2007**

- **zIIP processor usage and reporting – back fit in v310 as well (June)**
- **Basic RMF III launch, optional RMF collection for CF data**
- **Integration:**
 - ▶ Linking from OM DB2 to OM z/OS (enclave), DWL to OMEGAMON XEs, and z/OS Management Console (zMC)
- **I/O rate by address space from CUA**
- **Real Storage information from CUA**
- **Tape drive situation support**
- **z/OS Exploitation**
 - ▶ CF structure duplexing reporting
 - ▶ HiperPAV support
 - ▶ Plex wide zAAP support
- **Merging of OM XE for USS into OM XE on z/OS**



OMEGAMON XE for CICS on z/OS v4.10 *Highlights*

**Availability
4Q2006**

▪ **Continued CICS TS Support**

- ▶ URIMAP summary, global counts and details for CICS web clients
- ▶ Web Service analysis reports for Web Service Details, Virtual Host Detail, Pipeline Detail, Document Template Detail
- ▶ Business Transaction Services (BTS) support for long running processes, type, name, container, activity
- ▶ Recovery Manager UOW reporting for application performance tuning
- ▶ Enqueue pool details for recovery
- ▶ Enterprise Java analysis reporting and Enterprise Java analysis report, Request model

▪ **Dynamic Workspace Linking**

- ▶ CICS Transaction -> DB2 Thread, CICS Transaction Analysis data,
- ▶ DB2 Thread Exception Detail report, Shared Temporary Storage queue data -> CF Structures Data for Sysplex workspace, Log Stream Analysis data -> Coupling Facility Structures Data for Sysplex workspace

▪ **CUA Migration to XE – SLA and ATF**

▪ **Integration with CICS PA**



OMEGAMON XE for IMS on z/OS v4.10 *Highlights*

▪ TRF reporting improvements

- ▶ capability has increased precision expanding transactions to the millisecond

Availability
4Q2006

▪ DL/I call reporting for full function and Fast Path WFI regions

- ▶ Accumulation of all call types issued by an application during transaction processing and the number of each call type issued by an application during transaction processing

▪ Migration from classic

- ▶ Region occupancy %s has been added to Dependent Region statistics

▪ HALDB support

- ▶ DB summaries, partition details, VSAM / OSAM statistics

▪ DBCTL detailed thread reporting for monitoring activity

- ▶ Allows detection and prevention of application bottlenecks and response time problems.

▪ Enhanced IMS Connect reporting

- ▶ Provides summary of transaction performance, details about every transaction processed and auto-discovery of IMS Connect tasks

▪ Product provided Dynamic Workspace Links (DWL) to other OMEGAMONs (DB2 and CICS) have been added for greater integration



OMEGAMON XE for DB2 PM/PE on z/OS v4.10

Highlights

**Availability
4Q2006**

- **Support for zIIP processor usage**
 - ▶ New DB2 Top Ten Volume reports for the System z9 platform
- **DB2 version 9 day one support**
- **Enhanced Thread Overview**
 - Show additional LOCK information and Changed Pages in all Group Buffer Pools
- **DWL for enclave to OMEGAMON XE on z/OS, OMEGAMON XE for CICS on z/OS and OMEGAMON XE for IMS on z/OS.**



OMEGAMON XE for Storage on z/OS v4.10 *Highlights*

**Availability
4Q2006**

- **New storage toolkit for DFHSM and DFDSS functions**
 - ▶ Database administrators can quickly and easily create commands or schedule actions to maintain and administer DASD storage via the TEP
- **Top ten volume reports**
- **New dataset attribute database**
 - ▶ Granular and versatile reporting capabilities at the dataset level that can be administered via the new storage toolkit function
- **New problem solving workspaces adding to your problem determination capabilities**
 - ▶ Intelligent situation analysis
- **Integration:**
 - ▶ DWL to other OMEGAMON XE on z/OS
 - ▶ Launch of Total Productivity Center (TPC)



OMEGAMON XE for Mainframe Networks on z/OS v4.10

Highlights

Availability
4Q2006

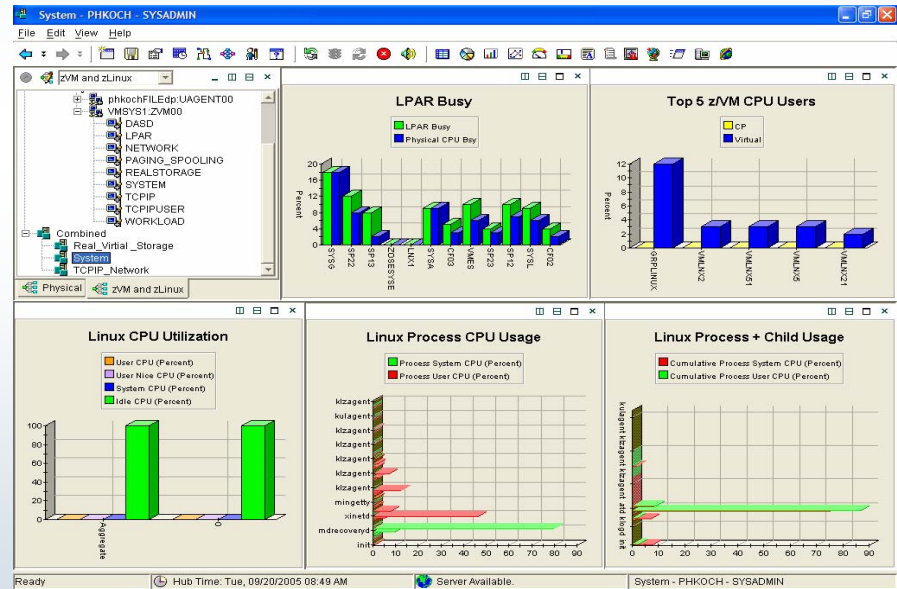
- **New performance reports**
 - ▶ VTAM buffer pool and address space workspaces and SNA information
- **Enhanced FTP records**
 - ▶ Provided by the z/OS Communications Server Network Management Interface resulting in performance improvement
- **TN3270 server session workspaces provide performance and availability metrics for systems running z/OS version 1.8**
- **Advanced historical reporting**
 - Available using both new Tivoli Enterprise Portal workspaces and raw SQL queries against the Tivoli Data Warehouse database
 - DBCTL detailed thread reporting for monitoring activity allowing the detection and prevention of application bottlenecks and response time problems
- **Enhancements to Enterprise Extender (EE) reporting, reporting as in the previous release, but also High Performance Router (HPR) connections that do not flow over EE connections, using the HPR wildcarding function available through the z/OS version 1.8 NMI .**
- **DWL to OMEGAMON XE on z/OS and NetView on z/OS for greater integration.**



OMEGAMON XE for z/VM and Linux on zSeries

**Availability
4Q2006**

- **Combined offering to monitors z/VM and Linux on System z**
- **Provides workspaces that display**
 - Overall System Health
 - Workload metrics for logged-in users
 - Individual device metrics
 - LPAR Data
- **Composite views of zLinux running on VM**
- **Leverages the VM Performance Toolkit**



Modernizing the “Face” of z/OS

The way it's been

```

Menu Utilities Compilers Options Status Help
-----
ISPF Primary Option Menu
Option ----> | Enter option

0 Settings      Terminal and user parameters      User ID  : SC0HST0
1 View          Display source data or listings    Time    : 11:31
2 Edit          Create or change source data       Terminal: 3270
3 Utilities     Perform utility functions          Screen  :
4 Foreground   Interactive language processing    Language: ENGLISH
5 Batch         Submit job for language processing Appl ID  : ISR
6 Command      Enter TSO or Workstation commands TSO logon: CIP
7 Dialog Test  Perform dialog testing             TSO prefix: SC0HST0
8 LM Facility  Library administrator functions    System ID: 0619
9 IBM Products IBM program development products MVS acct.: TECH000
10 SCLM        SU Configuration Library Manager Release  : ISPF 4.8
11 Workplace   ISPF Object/Action Workplace

- v net,inact,id#cu0821
  I310971 UARY  ACCEPTED
  I311051 CU0821 MODE NOW INACTIVE
- v net,act,id#cu0821
  I310971 UARY  ACCEPTED
  I310931 CU0821 ACTIVE
  #HASP100 WOLFG  ON TSOINRDR
  #HASP373 WOLFG  STARTED
  #HASP395 WOLFG  ENDED
  #HASP150 WOLFG  ON PRINTER1 5 LINES
- IE02231 IF06200U,ISTRATCL,RES2,UNKNOWN
  I318041 UIRM CLOSE IN PROCESS FOR TSO0001 OPENED BY UNKNOWN UNKNOWN
  #HASP100 PRINTER1 INACTIVE - CLASS=AF
  #HASP250 WOLFG  IS PURGED
  I314001 TERMINATION IN PROGRESS FOR APPLID TSO0001
  I314051 UIRM CLOSE COMPLETE FOR TSO0001
  I314021 FAILED - CODE 0000 - IN ADDRESS SPACE 0000
  #HASP100 WOLFG  ON TSOINRDR
  #HASP373 WOLFG  STARTED

IEE1921 ENTER  CANCEL  0 C,K
-
IEE1631 MODE= RD
    
```



The way it can be

Sysplex Name	MVSID	Check Owner	Check Name	Check Status	Enabled	Active	Global	More Than One Msg	Exit Routine
LPAR400J	SYSD	IBMCF	CDS_Dataset_Separation	Exception_High	Yes	Yes	No	Yes	IBMSECR7
LPAR400J	SYSD	IBMUS	USS_FILESYS_CONFIG	Exception_High	Yes	Yes	No	Yes	IBMSECR7
LPAR400J	SYSD	IBMRAF	RACF_SENSITIVE_RESOURCES	Exception_High	Yes	Yes	No	Yes	IBMSECR7
LPAR400J	SYSD	IBMUS	USS_AUTOMOUNT_DELAY	Exception_Low	Yes	Yes	No	Yes	IBMSECR7
LPAR400J	SYSD	IBMUS	USS_MAVSOCKETS_MAVFILEPROC	Exception_Low	Yes	Yes	No	Yes	IBMSECR7
LPAR400J	SYSD	IBMRS	REM_REAL	Exception_Low	Yes	Yes	No	Yes	IBMSECR7
LPAR400J	SYSD	IBMCHZ	CHZ_Systems_Routcode	Exception_Low	Yes	Yes	No	Yes	IBMSECR7
LPAR400J	SYSD	IBMUS	CHZ_Console_Routcode_11	Exception_Low	Yes	Yes	No	Yes	IBMSECR7
LPAR400J	SYSD	IBMCHZ	CHZ_AMRF_Eventual_Action_Msgs	Exception_Low	Yes	Yes	No	Yes	IBMSECR7
LPAR400J	SYSD	IBMCHZ	CHZ_Console_Miscopie_And_Routcode	Err_N/A	Yes	Yes	No	Yes	IBMSECR7
LPAR400J	SYSD	IBMCHZ	CHZ_EMCS_Hardcopy_Miscopie	Err_N/A	Yes	Yes	No	Yes	IBMSECR7
LPAR400J	SYSD	IBMGR	GRS_CONVERT_RESERVES	Err_N/A	Yes	Yes	No	Yes	IBMSECR7
LPAR400J	SYSD	IBMCHZ	CHZ_Outcome_Messages	Err_N/A	Yes	Yes	No	Yes	IBMSECR7

Expert-friendly, long learning curve for people new to platform

- Multiple, inconsistent UIs – no central system management portal
- Many interfaces foreign to those new to platform
- Manual tasks requiring extensive documentation

- ✓ **Central** z/OS management portal
- ✓ **Simplified, automated** task-oriented mgmt interface, with integrated user assistance
- ✓ **Modern** look & feel; more familiar to those new to platform
- ✓ Focus on **customer goals**
- ✓ **Optional** for those who prefer traditional interfaces



Simplifying z/OS Operations Using OMEGAMON and Tivoli Enterprise Portal Technology - *New management console*

Value

- Simplify z/OS management for the new generation of IT professionals
- Automating, eliminating, and streamlining tasks
- Easily upgradeable to full OMEGAMON solutions

Capabilities

- Task oriented approach with GUI front end
- z/OS Health Checker data plus Tivoli Monitoring Services base capabilities
 - Expert Advice
 - Take Action

Configuration status metrics for z/OS resources displayed using Tivoli Enterprise Portal

Improved ease-of-use of z/OS management

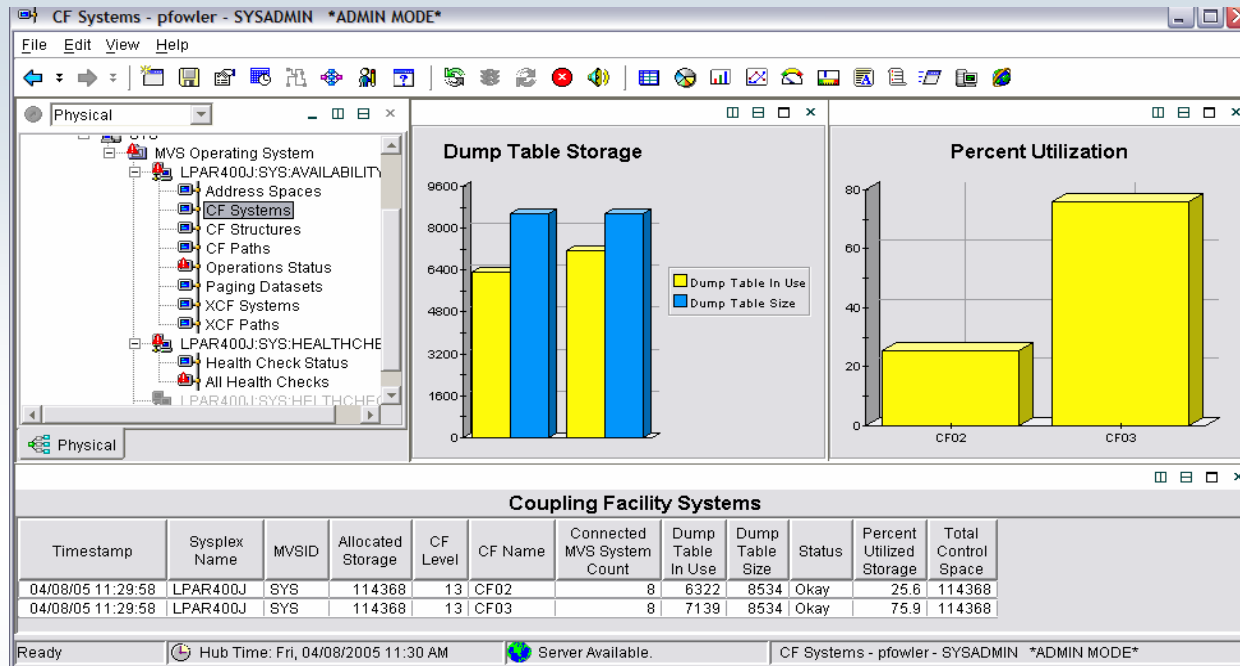
Value-add upgrades to comprehensive Tivoli Monitoring Services products



**Available at no charge
to z/OS customers**



IBM OMEGAMON z/OS Management Console



- Eliminates memorization of complex DISPLAY commands
- Visualizes status of sysplex resources and Health Checks
- Shipped 1.1.0 December 2005
- Shipped 1.1.1 with ITM V6 support March 2006



OMEGAMON zMC : Configuration Health Checks

All Health Checks - pfwler - SYSADMIN *ADMIN MODE*

File Edit View Help

Physical

Paging Datasets
XCF Systems
XCF Paths
LPAR400J:SYS:HEALTHCHE
Health Check Status
All Health Checks
LPAR400J:SYS:HEALTHCHE
LPAR400J:SYS:MVSSYS

Physical

Counts of Check States

Sysplex Name	MVSIID	Check Owner	Check Name	Check Status	Enabled	Active	Global	More Than One Msg	Exit Routine
LPAR400J	SYS	IBMXCF	CDS_Dataset_Separation	Exception_High	Yes	Yes	No	Yes	IBMSECTR
LPAR400J	SYS	IBMUSS	USS_FILESYS_CONFIG	Exception_High	Yes	Yes	No	Yes	IBMSECTR
LPAR400J	SYS	IBMRACF	RACF_SENSITIVE_RESOURCES	Exception_High	Yes	Yes	No	Yes	IBMSECTR
LPAR400J	SYS	IBMUSS	USS_AUTOMOUNT_DELAY	Exception_Low	Yes	Yes	No	Yes	IBMSECTR
LPAR400J	SYS	IBMUSS	USS_MAXSOCKETS_MAXFILEPROC	Exception_Low	Yes	Yes	No	Yes	IBMSECTR
LPAR400J	SYS	IBMRSM	RSM_REAL	Exception_Low	Yes	Yes	No	Yes	IBMSECTR
LPAR400J	SYS	IBMCNZ	CNZ_Syscons_Routcode	Exception_Low	Yes	Yes	No	Yes	IBMSECTR
LPAR400J	SYS	IBMCNZ	CNZ_Console_Routcode_11	Exception_Low	Yes	Yes	No	Yes	IBMSECTR
LPAR400J	SYS	IBMCNZ	CNZ_AMRF_Eventual_Action_Msgs	Exception_Low	Yes	Yes	No	Yes	IBMSECTR
LPAR400J	SYS	IBMCNZ	CNZ_Console_Mscope_And_Routcode	Env_N/A	Yes	Yes	No	Yes	IBMSECTR
LPAR400J	SYS	IBMCNZ	CNZ_EMCS_Hardcopy_Mscope	Env_N/A	Yes	Yes	No	Yes	IBMSECTR
LPAR400J	SYS	IBMGRS	GRS_CONVERT_RESERVES	Env_N/A	Yes	Yes	No	Yes	IBMSECTR
LPAR400J	SYS	IBMCNZ	CNZ_Syscons_Mscope	Env_N/A	Yes	Yes	No	Yes	IBMSECTR

Ready | Hub Time: Fri, 04/08/2005 09:52 AM | Server Available. | All Health Checks - pfwler - SYSADMIN *ADMIN MODE*

IBM OMEGAMON z/OS Management Console v4.10

Highlights

- **Coupling Facility status extra details and policy name**
- **Coupling Facility Resource Manager (CFRM) status for contention issues**
- **LPAR Cluster status details**
- **Unix System Services dubbed address spaces that are running from a z/OS perspective**
- **Unix System Services processes running on the system**
- **DWL to OMEGAMON XE on z/OS for better integration and problem determination**

**Availability
4Q2006**



End to End Management from Tivoli

System z Portfolio

IBM Tivoli Monitoring v6.1

Tivoli Enterprise Console v3.9

OMEGAMON XE on z/OS v4.1.0

OMEGAMON XE for DB2 PE/PM v4.1.0

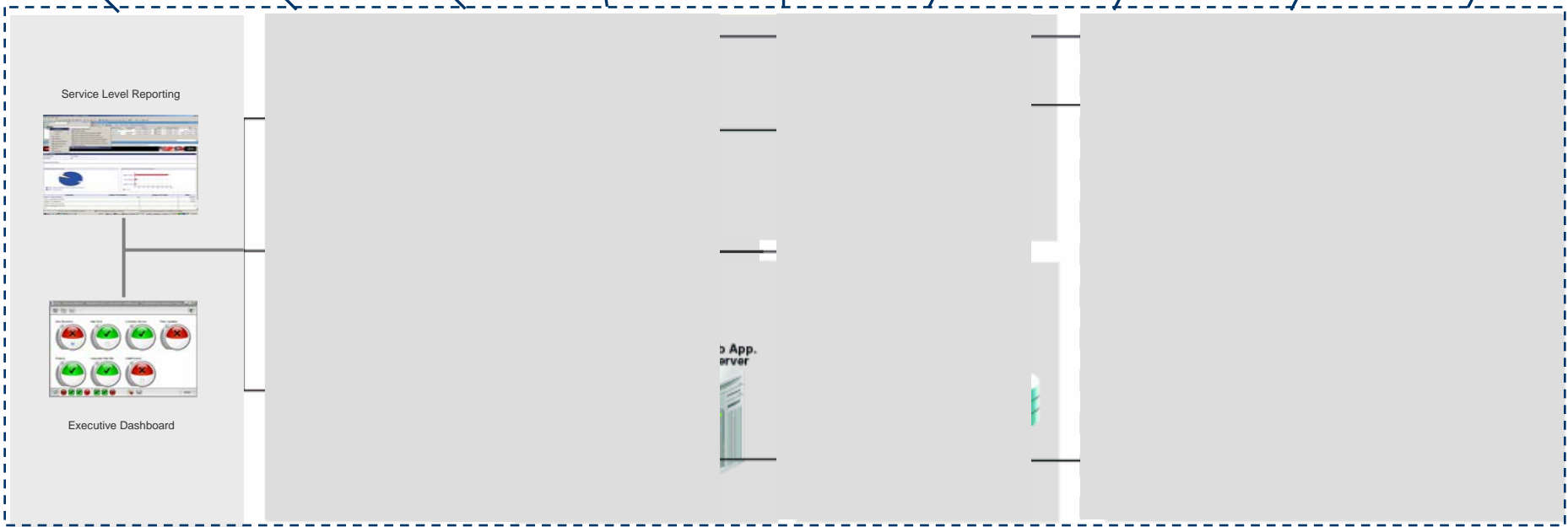
OMEGAMON XE for CICS & IMS v4.1.0

OMEGAMON XE for MF Networks v4.1.0

OMEGAMON XE for Storage v4.1.0

License Compliance Manager for z/OS v4.1

Contract Compliance Manager v3.7



System Automation for Multiplatforms v2.2

Composite Application Manager for WebSphere V6.1

Composite Application Manager for R.T. Tracking V6.1

Composite Application Manager for SOA V6.1

NetView on z/OS v5.2

System Automation for z/OS 3.1

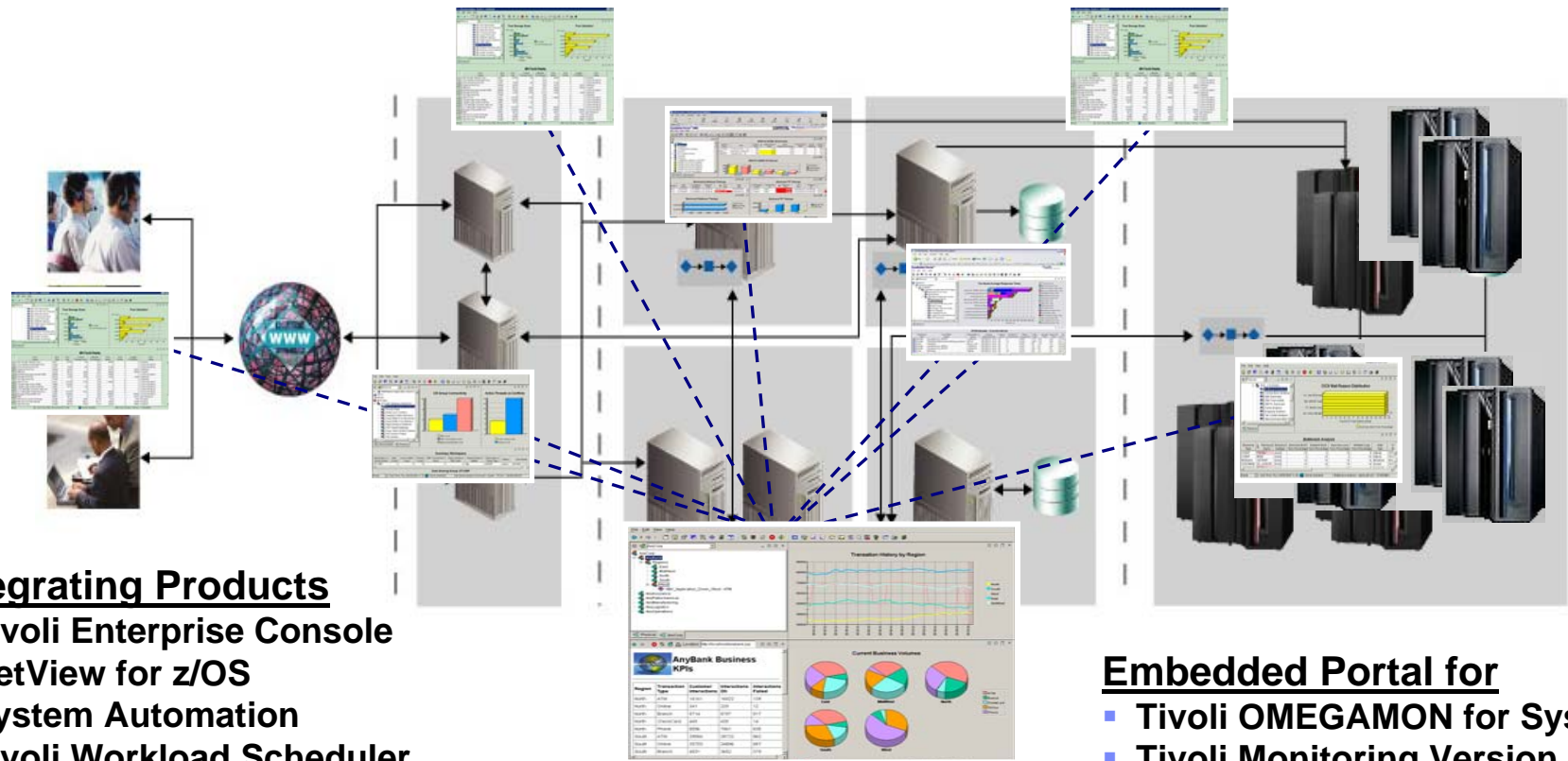
Workload Scheduler for z/OS 8.3

Usage and Accounting Manager v6.1



Complete View Of Application Performance

A Dynamic Role-based Policy Workspace for Integrating IT Operations Silos



Integrating Products

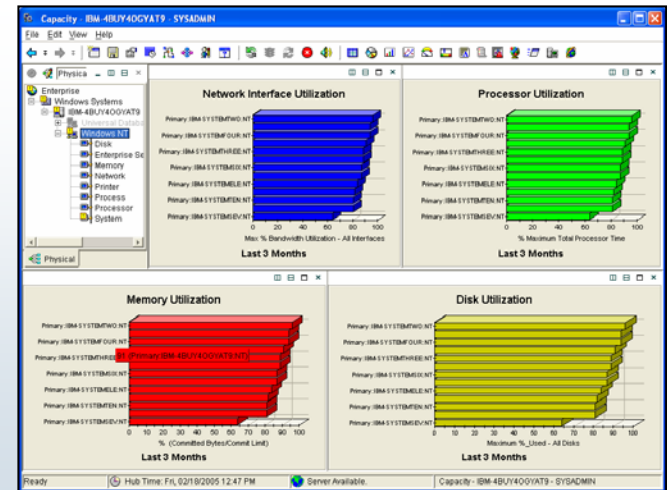
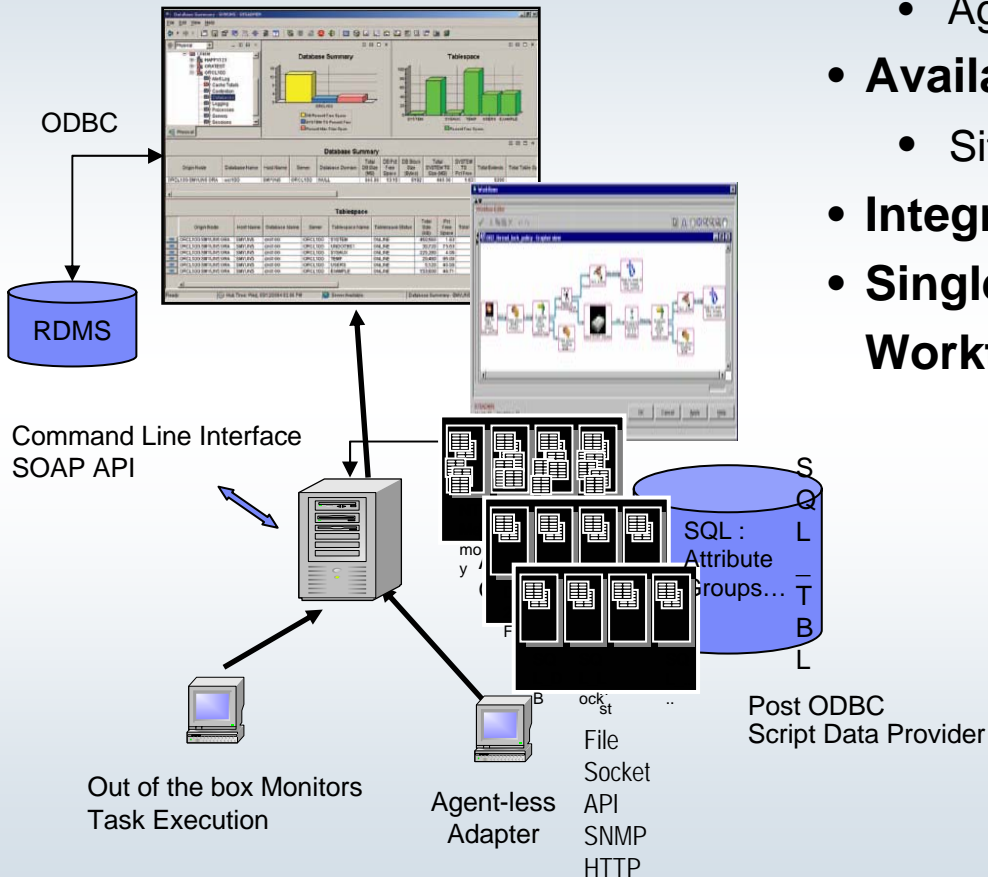
- Tivoli Enterprise Console
- NetView for z/OS
- System Automation
- Tivoli Workload Scheduler
- Tivoli Monitoring Version 5
- Tivoli Service Level Advisor
- Tivoli Business Systems Manager
- *Netcool OMNibus Active Event List*

Embedded Portal for

- Tivoli OMEGAMON for System z
- Tivoli Monitoring Version 6
- IBM OMEGAMON z/OS Management Console
- Tivoli Composite Application Manager Family

Tivoli Enterprise Portal – More than Visualization

- **Integrated Warehouse**
 - Quick Setup with Full Operational Data
 - Aggregation and Pruning
- **Available Data Management:**
 - Situations, Workflows, Policies
- **Integrated Run-book with Expert Advise**
- **Single Operations Console with Workflow**

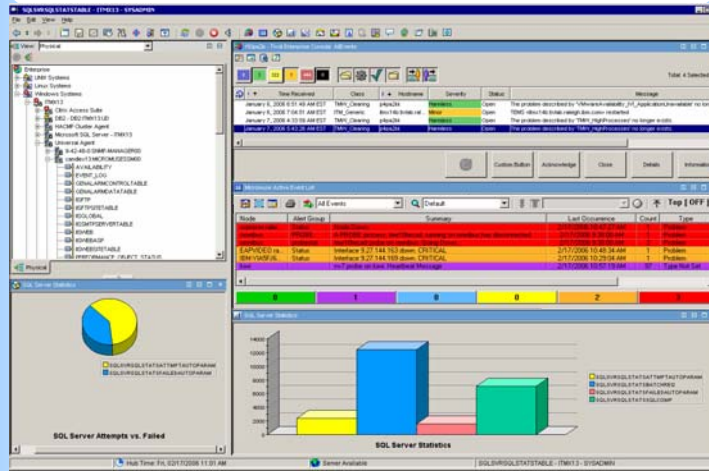


New Product Releases – *Centralized Management*

Mainframe OMEGAMON

Distributed ITM 6.1

- zLIP & zAAP processors
- RMF III integration
- CICS TS 3.1
- CICS JMV statistics
- CICS PA integration
- Enterprise JAVA reporting
- IMS TRF & HALDB reporting
- IMS Connect
- DB2 Connect
- DB2 v9
- SQL PA integration
- Comm Server Network Management Interface data
- EE & HPR network reporting
- DFHMS & DFDSS storage adm
- z/VM & Linux reporting
- z/VM PTK integration



Composite Application Management

- UNIX
- Windows
- Linux
- OS/400
- DB2, Oracle, Microsoft SQL, Sybase
- mySAP, Siebel
- HACMP
- Microsoft Exchange
- Microsoft .NET
- Virtual Servers - Citrix, VMWARE ESX

- Application topology & transaction info to CCMDB
- Web Services and Configurable Mediation Primitives
- DataPower
- Lotus Workplace, ESB, and Process Server
- Custom MBean Monitoring, Web Session data, Enhanced Memory Analysis
- J2EE applications on JBoss and Tomcat

End To End Management

SQLSVRSQLSTATSTABLE - ITMX13 - SYSADMIN

File Edit View Help

View: Physical

f50pa2b - Tivoli Enterprise Console: AllEvents

8 3 322 1 444 0

Total: 4 Selected: 1

Enterprise

- UNIX Systems
- Linux Systems
- Windows Systems
- ITMX13
 - Citrix Access Suite
 - DB2 - DB2:ITMX13:UD
 - HACMP Cluster Agent
 - Microsoft SQL Server - ITMX13
 - Universal Agent
 - 9-42-48-0:SNMP-MANAGER00
 - candlex13:MICROMUSESSM00
 - AVAILABILITY
 - EVENT_LOG
 - GENALARMCONTROLTABLE
 - GENALARMDATATABLE
 - IISFTP
 - IISFTPSITETABLE
 - IISGLOBAL
 - IISSMTPSERVERTABLE
 - IISWEB
 - IISWEBASP
 - IISWEBSITETABLE
 - PERFORMANCE_OBJECT_STATUS

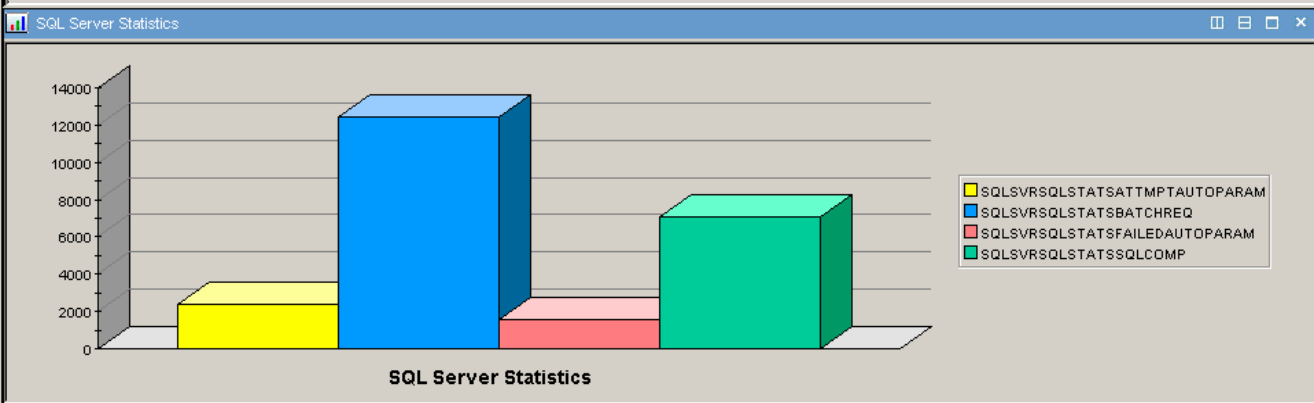
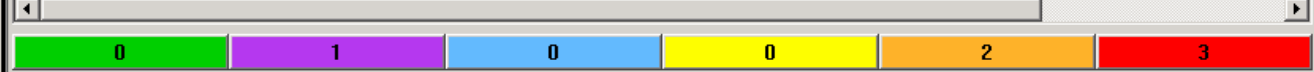
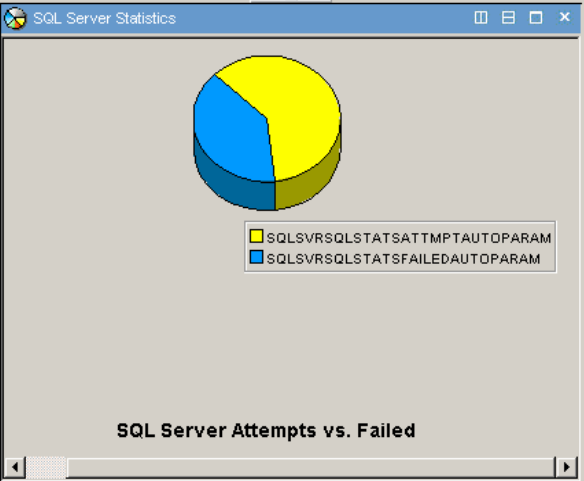
Time Received	Class	Hostname	Severity	Status	Message
January 6, 2006 6:51:49 AM EST	TMW_Clearing	p4pa2kk	Harmless	Open	The problem described by 'VMwareAvailability_JVI_ApplicationUnavailable' no longer exists.
January 6, 2006 7:04:51 AM EST	ITM_Generic	itm14b.tivlab.ral...	Minor	Open	TEMS <itm14b.tivlab.raleigh.ibm.com> restarted
January 7, 2006 4:33:59 AM EST	TMW_Clearing	p4pa2kk	Harmless	Open	The problem described by 'TMW_HighProcesses' no longer exists.
January 7, 2006 5:43:26 AM EST	TMW_Clearing	p4pa2kk	Harmless	Open	The problem described by 'TMW_HighProcesses' no longer exists.

Custom Button Acknowledge Close Details Information

Tivoli Enterprise Portal

Everything at your Fingertips

Last Occurrence	Count	Type
2/17/2006 10:47:27 AM	1	Problem
2/17/2006 9:38:00 AM	1	Problem
2/17/2006 9:38:00 AM	2	Problem
2/17/2006 10:48:34 AM	1	Problem
2/17/2006 10:29:04 AM	1	Problem
2/17/2006 10:57:19 AM	97	Type Not Set

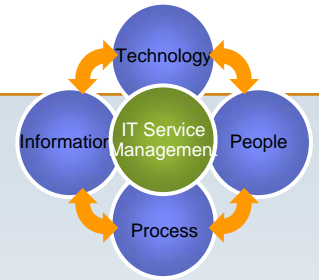


Hub Time: Fri, 02/17/2006 11:01 AM

Server Available

SQLSVRSQLSTATSTABLE - ITMX13 - SYSADMIN

OMEGAMON Preview Summary



- **IBM Tivoli is committed to bringing System z solutions that:**
 - ▶ Expand System z capabilities while enhancing its proven strengths
 - ▶ Reduce the costs associated with operational and systems management
- **Integrate and Interoperate**
 - ▶ Maintaining our leadership in enhancing System z hardware and software to integrate and interoperate with new platforms and applications
- **End to End Solutions**
 - ▶ Providing End-to-End management solutions to find and fix problems quickly, leveraging System z and Tivoli solutions
- **ITSM Solutions**
 - ▶ Delivering ITSM solutions that can meet your key IT challenges cost effectively



© Copyright IBM Corporation 2006

All rights reserved.

IBM, the IBM logo, System z, WebSphere, Lotus, Notes, Domino, z/OS, DB2, eServer, zSeries and z/VM are trademarks of International Business Machines Corporation in the United States, other countries, or both.

Microsoft, Windows, and the Windows logo are trademarks of Microsoft Corporation in the United States, other countries, or both. Microsoft product screen shots reprinted with permission from Microsoft Corporation.

Linux is a trademark of Linus Torvalds in the United States, other countries, or both.

Other company, product, or service names may be trademarks or service marks of others.

The information is provided “as is” without warranty of any kind, express or implied and is based on IBM’s current product plans and strategy, which are subject to change by IBM without notice. IBM shall not be responsible for any damages arising out of the use of, or otherwise related to, this information. Nothing contained herein is intended to, nor shall have the effect of, creating any warranties or representations from IBM (or its suppliers or licensors), or altering the terms and conditions of the applicable license agreement governing the use of IBM software.

All customer examples described are presented as illustrations of how those customers have used IBM products and the results they may have achieved. Actual environmental costs and performance characteristics may vary by customer.

