



Advanced Technical Support

System z COBOL Application Development and CICS Update

***IBM Problem Determination Tools:
Fault, Edit, Debug, Test, and Tuning***



***Dan Brown
IBM z Systems AD/CICS Tools
browndan@us.ibm.com***

Trademarks

- The following are trademarks of the International Business Machines Corporation in the United States and/or other countries. For a complete list of IBM Trademarks, see www.ibm.com/legal/copytrade.shtml
 - ▶ AS/400, CICS, DB2, Domino, E-business logo, ESCON, eServer, FICON, IBM, IBM Logo, IMS, iSeries, Lotus, MVS, Notes, OS/390, pSeries, Rational, RS/6000, S/390, Tivoli, VM/ESA, VSE/ESA, WebSphere, xSeries, z/OS, System z, zSeries, z/VM
- The following are trademarks or registered trademarks of other companies
 - ▶ Linux is a registered trademark of Linus Torvalds
 - ▶ Java and all Java-related trademarks and logos are trademarks of Sun Microsystems, Inc., in the United States and other countries
 - ▶ UNIX is a registered trademark of The Open Group in the United States and other countries.
 - ▶ Microsoft, Windows and Windows NT are registered trademarks of Microsoft Corporation.
 - ▶ SET and Secure Electronic Transaction are trademarks owned by SET Secure Electronic Transaction LLC.
 - ▶ Intel is a registered trademark of Intel Corporation
 - ▶ * All other products may be trademarks or registered trademarks of their respective companies.
- **Notes:**
 - Performance is in Internal Throughput Rate (ITR) ratio based on measurements and projections using standard IBM benchmarks in a controlled environment. The actual throughput that any user will experience will vary depending upon considerations such as the amount of multiprogramming in the user's job stream, the I/O configuration, the storage configuration, and the workload processed. Therefore, no assurance can be given that an individual user will achieve throughput improvements equivalent to the performance ratios stated here.
 - IBM hardware products are manufactured from new parts, or new and serviceable used parts. Regardless, our warranty terms apply.
 - All customer examples cited or described in this presentation are presented as illustrations of the manner in which some customers have used IBM products and the results they may have achieved. Actual environmental costs and performance characteristics will vary depending on individual customer configurations and conditions.
 - This publication was produced in the United States. IBM may not offer the products, services or features discussed in this document in other countries, and the information may be subject to change without notice. Consult your local IBM business contact for information on the product or services available in your area.
 - All statements regarding IBM's future direction and intent are subject to change or withdrawal without notice, and represent goals and objectives only.



Agenda

IBM File Manager for z/OS™

- Data management tool supporting key file structures like VSAM, DB2™, and IMS™

IBM Fault Analyzer for z/OS™

- Helps you rapidly pinpoint cause of failed application (abends)

IBM Debug Tool Utilities & Advanced Functions for z/OS™

- Source code debugging to improve development productivity

IBM Workload Simulator for z/OS and OS/390™

- Regression and Load testing of interactive z/OS™ applications

IBM Application Performance Analyzer™

- Monitor performance at the application level

Agenda

IBM File Export for z/OS™

- Export and import related sets of DB2, IMS, VSAM and sequential data

Application Time Facility (aka TicToc)

- Enables date/time simulation in the mainframe environment

IBM ISPF Productivity Tool™ Version 5.8 (Spiffy)

- Turbo charge ISPF users

Rational Function Tester Extension™

- Workstation-based regression testing of interactive z/OS applications

Rational Performance Tester for z/OS™

- Harnesses the power of z/OS to validate web application scalability *before* deployment

PD Tools

IBM 2006 OFFERINGS

IMS V9
DB2 V8
CICS™ TSV3.1

Fault Analyzer V6

WASz

File Manager V6

File Export

WDDz

Debug Tool Utilities AF V6

COBOL™
Modernization

Application Time Facility

ISPF Productivity Tool

Workload Simulator
Rational Functional Tester Ext
Rational Performance Tester z/OS

WASz

Application Performance
Analyzer (APA)

E2E
Performance

IBM File Manager for z/OS

Use it to:

- Work with data in files, DB2 tables, and IMS databases
- Browse and edit data directly
- Easily copy, modify, reformat, and compare data

Key Features:

- Advanced data **Edit** and **Browse** **No limit to file size!**
 - Uses familiar ISPF edit commands
 - Powerful data formatting and selection capabilities
- A robust set of **utilities to create, copy, find, compare, and modify data**
- Work with data in friendly formats
 - Use a copybook or user-defined “template” to format records

IBM Fault Analyzer for z/OS

Use it to:

- Understand why an application abended
- Get information you need to diagnose and fix a problem

Key Features:

- **Automatic real-time capture** of diagnostic information
- **Automatic analysis and reporting** of application abends
 - FA can pinpoint an abend to the program and source statement
- **Interactive, point-and-shoot navigation** of abend information
 - Quickly navigate to information you need, even in large, complex applications

IBM Debug Tool and Advanced Functions for z/OS

Use it to:

- Interactively debug an application program while it runs
 - Step through source statements, set “breakpoints” and run, monitor and change program variables
- Modernize COBOL programs written for older compilers

Key Features:

- Debug COBOL, PLI, C, C++, and Assembler programs
- Support for batch, CICS, IMS, DB2, and DB2 stored procedure programs
- Set simple or conditional breakpoints; or run a script at a breakpoint
- Gives you the ability to trap and repair abends
- Intuitive GUI interface using WDDZ
- COBOL Conversion Utility

IBM Workload Simulator for z/OS

Use it to:

- Automatically simulate online user(s) on the system
- Perform automated functional testing
- Perform regression testing of online applications
- Perform Load and Performance testing
- Automated large volume data entry script

Key Features:

- Automatically capture test scripts from a live session
- Powerful scripting language
- Easy-to-use ISPF interface
- Organizes your testing scripts, projects, and results

IBM Rational Function Tester Extension for z/OS

Use it to:

- Automatically simulate online user(s) on the system
- Drive simulations from a workstation
- Perform regression testing of online applications

Key Features:

- An extension to Rational Functional Tester
- Automatically capture test scripts from a live session
- Powerful scripting language
- GUI interface
- Organizes your testing scripts and results

IBM Rational Performance Tester for z/OS

Use it to:

- To validate system performance
- To determine maximum system capacity
- To identify and resolve performance problems



Key Features:

- A highly scalable architecture, allowing larger tests to be run with less hardware
- A graphical schedule editor for workload and user population modeling
- Automated test creation via recording
- Test-time reporting on response time and throughput
- A graphical test editor, easily usable by novices and experts alike

File Export for z/OS

Use it to:

- Copy selected data from a related collection of data stores
- Migrate data to new environments
- Define application relationships between data in multiple files and databases

Key Features:

- flexible data selection and transformation rules
- Support for DB2, IMS, and MVS™ data in one product
- SQL-like definition of application relationships

Application Performance Analyzer

Use it to:

- Monitor an application while it is running
- Pinpoint the cause(s) of bad application performance, right down to the line of source code
- Capture and report application system resource consumption, (ie. file access, DB2 SQL, CPU cycles, etc.)

Key Features:

- Intuitive online ISPF interface
- Monitor application programs at the source level
- Support for batch, CICS, DB2, IMS, MQ

Application Time Facility (aka TicToc)

Use it to:

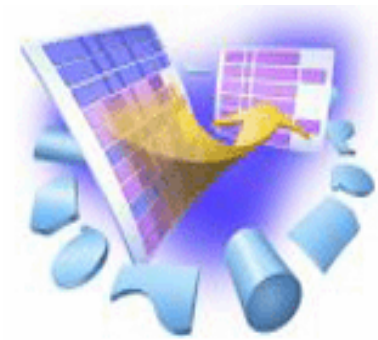
- Shift the time zone for an online region so users will see their local time
- Re-execute a failed job at the “right” time
- Test applications at end-of-period or sensitive times

Key Features:

- a simple ISPF interface where you can easily specify jobs or groups to receive simulated dates
- Support for batch, CICS, LE, IMS, IDMS, IDEAL, DB2, and NATURAL
- handles a complete set of date formats and services

IBM File Manager

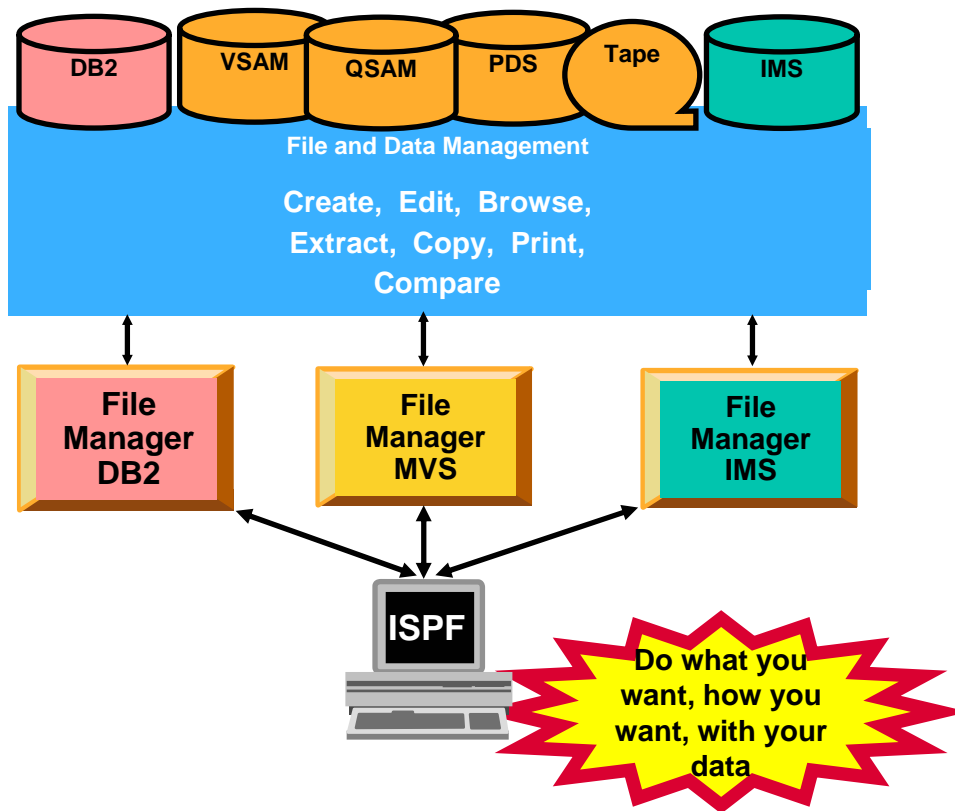
What is File Manager?



- **A comprehensive set of tools for working with z/OS data**
- **These tools allow you to:**
 - Manage QSAM, VSAM, IAM, OAM, DB2 and IMS data
 - Display and report data in friendly formats
 - Create, Copy, Modify, and Reformat data
 - Find and fix data in a file or database

File Manager Functional Overview

File Manager is delivered as one product with three components ---- **MVS, DB2 and IMS**



File Manager Features:

- Work with data in files, DB2 tables and IMS databases
- ISPF-like Panels
- Full Function Browse And Edit
- Multiple Modes Of Edit And Browse
 - Table
 - Single
- Flexible Selection Criteria
- Copy
- File Reformatting
- Global Search And Updated Capability
- Print
- Compare
- No file limit size!

The most-used functions in File Manager

■ **EDIT and BROWSE**

- Directly and interactively work with data in a file or database

■ **COPY**

- Easily select records / rows to be copied
- *Automatically* reformat record layouts during copy
- Powerful capabilities to modify data during copy

■ **COPYBOOK MAP**

The most-used functions

■ **Global FIND / CHANGE**

- Search for / change data across members in a PDS(E) or in a file

■ **COMPARE**

- Compare records/fields between files
- Select fields to be compared
- Map fields between files with different layouts

The most-used functions

- **PRINT**
 - Select records and fields
 - format a report
- **SQL Prototyping (DB2)**
 - Powerful facilities to help code and test SQL statements
- **EXPORT / IMPORT (DB2)**
- **UNLOAD / LOAD (IMS)**

File Manager EDIT and BROWSE:

- **Uses familiar ISPF-edit commands**
 - If you know how to use ISPF Edit, then FM Edit will be familiar
- **Edit a single record to an entire file/database**
 - Edit files or IMS databases of unlimited size
 - Customers tell us that FM lets them edit larger files than competing software!

Process Options Help

File Manager

Primary Option Menu

Command ==> 2

0	Settings	Set processing options
1	Browse	Browse data
2	Edit	Edit data
3	Utilities	Perform utility functions
4	Tapes	Tape specific functions
5	Disk/VSAM	Disk track and VSAM CI functions
6	OAM	Work with OAM objects
7	Templates	Create, edit, or update templates
8	HFS	Access Hierarchical File System
X	Exit	Terminate File Manager

User ID . . .	: DBA022
System ID . . .	: DEMOMVS
Appl ID . . .	: FMN
Version . . .	: 6.1.0
Terminal. . .	: 3278
Screen. . .	: 1
Date. . .	: 2005/12/09
Time. . .	: 06:40

Enter

Edit – with a copybook

Process Options Help

File Manager

Edit Entry Panel

Command ==>

Input Partitioned, Sequential or VSAM Data Set, or HFS file:

```

Data set/path name 'DBA022.FMDEMO.VSAM'
Member . . . . .
Volume serial . . . . .
Start position . . . . .
Record limit . . . . .
Inplace edit . . . . .
    
```

Copybook or Template:

```

Data set name . 'DBA022.FMDEMO.TEMPLATE'
Member . . . . . DEMODATA
    
```

Processing Options:

Copybook/template	Start position type	Enter "/" to select option
<u>1</u> 1. Above	1. Key	– Edit template _ Type (1,2,S)
2. Previous	2. RBA	– Include only selected records
3. None	3. Record number	– Binary mode, reclen _____
4. Create dynamic		– Create audit trail



Edit – with a copybook

```

Process   Options   Help
-----
File Manager Edit DNET074.GE02004.COUNTRY
Command ==> _____ Scroll CSR
                               Format TABL

      GEO-KEY          REC-TYPE  CTRY-CODE  INTERNET          POPULATION  LATITUD
      #2              #3         #4         #5                #6 #7
      AN 1:14        AN 15:1   AN 16:3    AN 19:4          BI 23:8 AN 31:6
      <----+-----1----> -    <->        <-->        <----+-----1-----+-----> <---->
000000 **** Top of data ****
000001 AFGHANISTAN      A          AFG        .AF              28513677 33:00N
000002 ALBANIA         A          ALB        .AL              3544808 41:00N
000003 ALGERIA         A          DZA        .DZ              32129324 28:00N
000004 AMERICAN SAMOA A          ASM        .AS              57902 14:20S
000005 ANDORRA         A          AND        .AD              69865 42:30N
000006 ANGUILLA        A          AGO        .AO              10978552 12:30S
000007 ANTIGUA AND BARBUDA A          AIA        .AI              13008 18:15N
000008 ARGENTINA        A          ATA        .AQ              0 90:00S
000009 ANTIGUA AND BARBUDA A          ATG        .AG              68320 17:03N
000010 ARGENTINA        A          AIA        .AI              38144753 34:00S
000011 ARMENIA         A          ARM        .AM              2991360 40:00N
000012 ARUBA           A          ABW        .AW              106130 17:30N
000013 ASHMORE AND CANTON A          ASM        .AS              0 12:14S
000014 AUSTRALIA      A          AUS        .AU              19913144 27:00S
    
```

Use familiar ISPF editor commands

And FM provides powerful new commands to work with and format data

Edit – Find command example

File Manager Edit DNETC

Enter

Command ==> F PAL #2

COUNTRY

Chars PAL found

Scroll CSR

Format TABL

GEO-KEY	REC-TYPE	CTRY-CODE	INTERNET	POPULATION	LATITUD
#2	#3	#4	#5	#6	#7
AN 1:14	AN 15:1	AN 16:3	AN 19:4	BI 23:8	AN 31:6
<----+-----1----	-	<->	<-->	<----+-----1-----+----->	<---->
000170 NEPAL	A	NPL	.NP	27070666	28:00N
000171 NETHERLANDS	A	NLD	.NL	16318199	52:30N
000172 NETHERLANDS AN	A	ANT	.AN	218126	12:15N
000173 NEW CALEDONIA	A	NCL	.NC	213679	21:30S
000174 NEW ZEALAND	A	NZL	.NZ	3993817	41:00S
000175 NICARAGUA	A	NIC	.NI	5359759	13:00N
000176 NIGER	A	NER	.NE	11360538	16:00N
000177 NIGERIA	A	NGA	.NG	137253133	10:00N
000178 NIUE	A	NIU	.NU	2156	19:02S
000179 NORFOLK ISLAND	A	NFK	.NF	1841	29:02S
000180 NORTHERN MARIA	A	MNP	.MP	78252	15:12N
000181 NORWAY	A	NOR	.NO	4574560	62:00N
000182 OMAN	A	OMN	.OM	2903165	21:00N
000183 PAKISTAN	A	PAK	.PK	159196336	30:00N
000184 PALAU	A	PLW	.PW	20016	07:30N

Edit – Single Record Format

File Manager Edit DNE

Command ==> FS █ 00001 COUNTRY

Enter

Scroll CSR
Format SNGL

Current type is Country Top Line is 3 of 137 in Record 170

Ref	Field	Picture	Typ	Start	Len	Data
2	2	GEO-KEY X(14)	AN	1	14	NEPAL
3	2	REC-TYPE X	AN	15	1	A
4	2	CTRY-CODE X(3)	AN	16	3	NPL
5	2	INTERNET X(4)	AN	19	4	.NP
6	2	POPULATION 9(11)	BI	23	8	27070666
7	2	LATITUDE X(6)	AN	31	6	28:00N
8	2	LONGITUDE X(7)	AN	37	7	084:00E
9	2	REGION				

F1=Help

F2=Zoom

F3=Exit

F4=CRetriev F5=RFind

F6=RChange

F7=Up

F8=Down

F9=Swap

F10=Previous F11=Next

F12=Cancel

Edit – Find Fields in Error Command

File Manager Edit DNET074.
 Command ==> fe (#11 #12)



1 errors found

Scroll CSR
 Format TABL

	LATITUDE #7	LONGITUDE #8	REGION #9	TOTAL-AREA-SQ-KM #11	LAND-AREA-SQ-KM #12
	AN 31:6	AN 37:7	AN 44:16	PD 60:6	PD 66:6
	<---->	<---->	<----+----1---->	<----+----1-->	<----+----1-->
000212	04:35S	055:40E	AFRICA	*XXXXXXXXXX	455
000213	08:30N	011:30W	AFRICA	71740	71620
000214	01:22N	103:48E	SOUTHEAST ASIA	693	683
000215	48:40N	019:30E	EUROPE	48845	48800
000216	46:07N	014:49E	EUROPE	20273	20151
000217	08:00S	159:00E	OCEANIA	28450	27540
000218	10:00N	049:00E	AFRICA	637657	627337
000219	29:00S	024:00E	AFRICA	1219912	1219912
				3903	3903
000221	40:00N	004:00W	EUROPE	504782	499542
000222	08:38N	111:55E	SOUTHEAST ASIA	5	5
000223	07:00N	081:00E	ASIA	65610	64740
000224	15:00N	030:00E	AFRICA	2505810	2376000

Scan for invalid data in numeric fields

F1=Help F2=Zoom F3=Exit F4=CRetriev F5=RFind F6=RChange
 F7=Up F8=Down F9=Swap F10=Left F11=Right F12=Cancel

File Manager MVS Utilities

Process Options Help

File Manager

Utility Functions

Command ==> 11

0	DBCS	Set DBCS data format for print
1	Create	Create data
2	Print	Print data
3	Copy	Copy data
4	Dslist	Catalog services
5	VTOC	Work with VTOC
6	Find/Change	Search for and change data
7	AFP	Browse AFP data
8	Storage	Browse user storage
9	Printdsn	Browse File Manager print data set
10	Loadlib	View load module information
11	Compare	Compare data
12	Audit trail	Print audit trail report
13	Copybook	View and Print

F1=Help

F2=Split

F3=Exit

F4=CRetriev

F7=Backward

F8=Forward

F9=Swap

F10=Actions

F12=Cancel

FM / DB2 Primary Option Menu

Process Options Utilities Help

FM/DB2 (DSNA)

Primary Option Menu

Command ==> 2

0	Settings	Set processing options
1	Browse	Browse DB2 table or view
2	Edit	Edit DB2 table
3	Utilities	Perform utility functions
4	SQL	Prototype, execute and analyze SQL
5	DB2I	Start DB2 Interactive
X	Exit	Terminate FM/DB2

User ID . . .	: DBA022
System ID . . .	: DEMOMVS
Appl ID . . .	: FMN2
Version . . .	: 6.1.0
Terminal . . .	: 3278
Screen . . .	: 1
Date . . .	: 2005/12/09
Time . . .	: 11:52

DB2 SSID . . .	: <u>DSNA</u>
SQL ID . . .	: <u>DBA022</u>

File Manager for DB2 Edit/Browse

Process Options Utilities Help

FM/DB2 (DF52)

DB2 Edit

Command ==>

Specify the DB2 Object:

Location _____ Database . . _____ (optional)
 Owner ALLANT Table space _____ (optional)
 Name *

Row count 100 Number of rows to edit

Template:

Data set name . . . 'ALLANT.TEMPLATE'
 Member EMP

Processing Options:

Template usage

- 1 1. Above
2. Previous
3. Generate from table
4. Generate/Replace

Enter "/", "A"lways to select option

- _ Edit options
- / Edit template
- _ Re-edit template

File Manager for DB2 Edit/Browse

Process Options Utilities Help

```

FM/DB2 (DF52)                               Table Edit                               5 string(s) changed
Command ==>                                  Scroll CSR
TABLE ALLANT.EMP                             Format TABL
      EMPNO  LASTNAME      FIRSTNME      JOB          HIREDATE      WORKDEPT  PHONEN
      #1     #4            #2            #8           #7            #5         #6
      CH(6)  VARCHAR(15)   VARCHAR(12)   CH(8)        DATE          CH(3)     CH(4)
      <----+> <----+-----1-----> <----+-----1-> <----+--> <----+-----> <-> <-->

000000 **** Top of data ****
000001 000010 HAASK          CHRISTINE<    PRES          01.01.1965   C11        3978
000002 000060 STERN<        IRVING<       MANAGER       14.09.1973   A00        6423
000003 000110 LUCCHESI<     VINCENZO<    SALESREP      16.05.1958   A00        3490
000004 000120 O'CONNELL<    SEAN<         CLERK         05.12.1963   A00        2167
000005 000130 QUINTANA<     DOLORES<     ANALYST       28.07.1971   C11        4578
000006 000140 NICHOLLS<     HEATHER<     ANALYST       15.12.1976   C11        1793
000007 000160 PIANKA<       ELIZABETH<   DESIGNER      11.10.1977   C11        3782
000008 000170 YOSHIMURA<   MASATOSHI<   DESIGNER      15.09.1978   A00        2890
000009 000200 BROWN<        DAVID<        DESIGNER      03.03.1966   A00        4501
000010 000210 JONES<        WILLIAM<     DESIGNER      11.04.1979   C11        0942
000011 000220 LUTZ<         JENNIFER<    DESIGNER      29.08.1968   A00        0672
000012 200010 HEMMINGER<    DIAN<        SALESREP      01.01.1965   A00        3978
000013 200120 ORLANDO<     GREG<        CLERK         05.05.1972   A00        2167
000014 **** End of data ****
  
```


File Manager for DB2 Utilities

Process Options Utilities Help

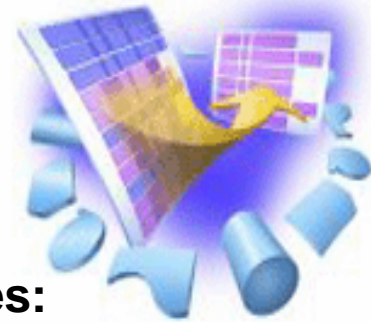
FM/DB2 (DF52)

Utility Functions

Command ==> 3

- | | | |
|----|--------------|--|
| 1 | Print | Print DB2 table or view |
| 2 | Objects | Create and drop DB2 objects |
| 3 | Copy | Copy data within DB2 |
| 4 | Object List | Display and process DB2 object lists |
| 5 | Privileges | Manage DB2 privileges |
| 6 | Import | Import sequential or VSAM data into DB2 |
| 7 | Export | Export DB2 data to sequential or VSAM data set |
| 8 | Create | Create DB2 test data |
| 9 | Utilities | DB2 utility job generation |
| 10 | Audit trail | Print audit trail report |
| 11 | Print browse | Browse FM/DB2 print data set |

File Manager Summary



- **One product, 3 environments:**
MVS, DB2, IMS
- **Modes Of Operation**
 - Interactive
 - Batch
- **Supported Data Types**
 - QSAM / PDS(E)
 - VSAM / IAM
 - DB2
 - IMS
 - Physical Disk / Tape Records

- **File Manager Features:**
 - Familiar ISPF-like Panels
 - Powerful Browse And Edit
 - Customizable Data Display and Formatting
 - Flexible Record and Field Selection Criteria
 - Copy
 - File / Database Update
 - File / Database Reformatting
 - Global Search And Updated Capability
 - Print
 - Compare
 - Export / Import

IBM Fault Analyzer

What is Fault Analyzer ?

- **A tool that helps you determine the cause of an application abend**
 - so you can more quickly identify and resolve the problem

- **It provides information about an application when it has abended, to help you assess:**
 - What happened, and why?
 - What program?
 - What line of source code?
 - What source variables were involved?

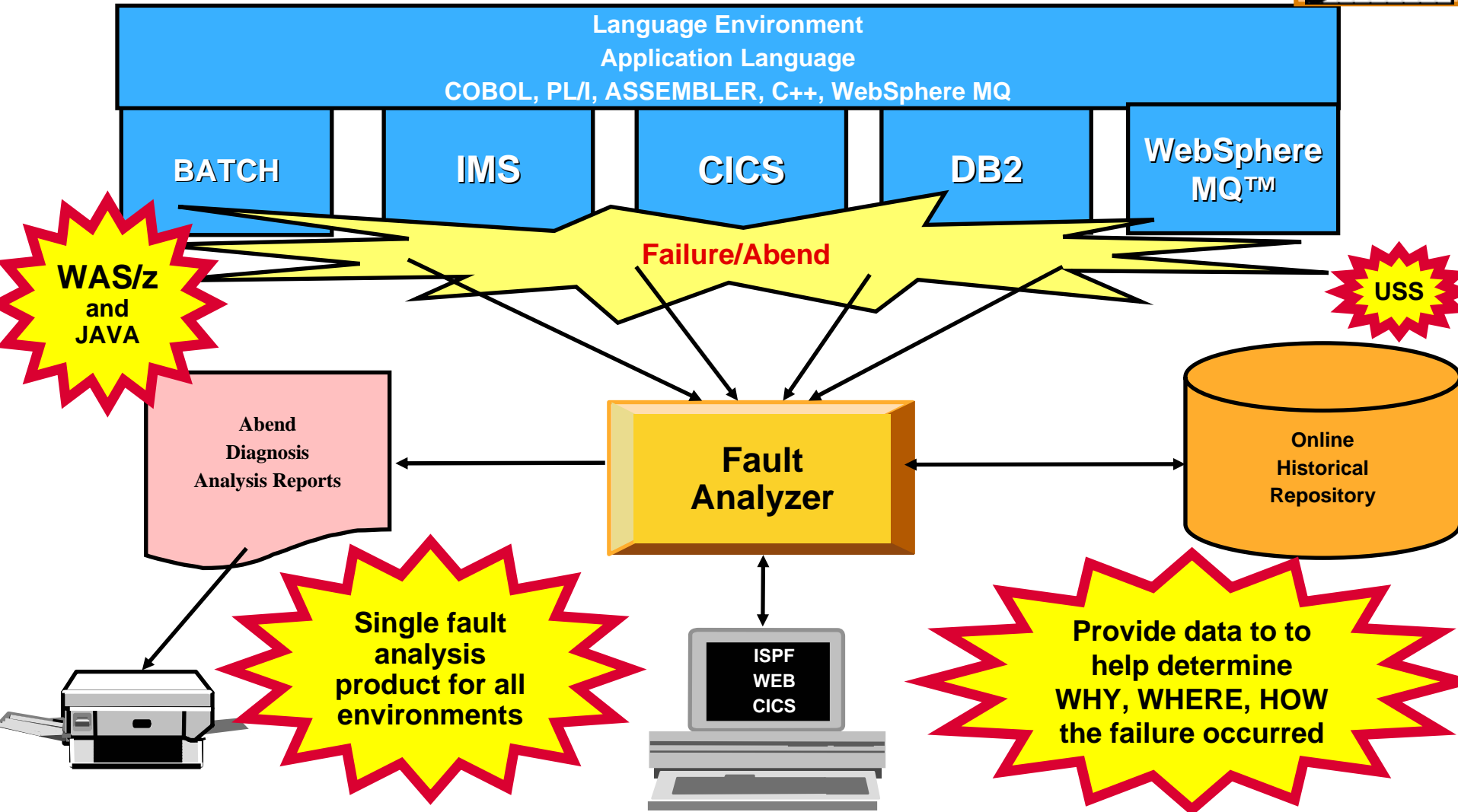
What Functions does Fault Analyzer have ?

- **Real-Time Analysis**
 - Automatic analysis and report generation
 - Automatic captures of detailed application data for later interactive analysis

- **Reanalysis**
 - Point-and-shoot navigation of an abend
 - Apply program source data after an abend *without re-creating the abend*



Fault Analyzer - *Helps you rapidly pinpoint why and where an enterprise application failed - and offers suggestions on how to resolve*



A familiar occurrence...

Ooops! The application abended.

```

Display Filter View Print Options
-----
SDSF OUTPUT DISPLAY DNET074R JOB06769 DSD 2 LINE 0 COLUMNS 02 01
COMMAND INPUT ==> █ SCROLL ==> CSR
***** TOP OF DATA *****
                J E S 2   J O B   L O G   --   S Y S T E M   M V S A   --   N O D E

11.32.09 JOB06769 ---- SATURDAY, 30 APR 2005 ----
11.32.09 JOB06769 IRR010I USERID DNET074 IS ASSIGNED TO THIS JOB.
11.32.09 JOB06769 ICH70001I DNET074 LAST ACCESS AT 11:31:57 ON SATURDAY, APRIL
11.32.09 JOB06769 $HASP373 DNET074R STARTED - INIT 2 - CLASS A - SYS MVSA
11.32.09 JOB06769 IEF403I DNET074R - STARTED - TIME=11.32.09
11.32.11 JOB06769 +IDI0001I Fault Analyzer V5R1M0 (UK00798 2005/02/23) invoked
11.32.13 JOB06769 +IDI0002I Module SAM2, program SAM2, source line # 157: Abend
11.32.14 JOB06769 +IDI0003I Fault ID F00053 assigned in history file FAULTANL.V
11.32.14 JOB06769 IEF450I DNET074R RUNSAM1 - ABEND=S0C7 U0000 REASON=00000007
        638                TIME=11.32.14

11.32.14 JOB06769 - --TIMINGS (MINS.)--
11.32.14 JOB06769 -JOBNAME  STEPNAME  PROCSTEP  RC  EXCP  CPU  SRB  CLOCK
11.32.14 JOB06769 -DNET074R                RUNSAM1  *S0C7  1666  .01  .00  .08
11.32.14 JOB06769 IEF404I DNET074R - ENDED - TIME=11.32.14
11.32.14 JOB06769 -DNET074R ENDED.  NAME-
11.32.14 JOB06769 $HASP395 DNET074R ENDED                TOTAL CPU TIME=

----- JES2 JOB STATISTICS -----
30 APR 2005 JOB EXECUTION DATE
      26 CARDS READ
    2,100 SYSOUT PRINT RECORDS
        0 SYSOUT PUNCH RECORDS
    138 SYSOUT SPOOL KBYTES
    0.08 MINUTES EXECUTION TIME
    1 //DNET074R JOB REGION=4M,
      // TIME=(1),MSGCLASS=H,NOTIFY=DNET074,MSGLEVEL=(1,1)

```

Fault Analyzer captured information and produced a Real-Time Analysis report.

How do I view the Real-Time Analysis report?

- **The real time report can be viewed from SYSOUT (for a batch job)**
- **Or, for any abend, the report can be viewed from the Online Interface**

An example of a Fault Analyzer Report

```

  Display  Filter  View  Print  Options  Help
-----
SDSF OUTPUT DISPLAY DNET074R JOB06769  DSID   106 LINE 1          COLUMNS 02- 81
COMMAND INPUT ==> █          SCROLL ==> HALF
*****
* IBM Fault Analyzer for z/OS V5R1M0 (UK00798 2005/02/23)          *
*                                                                    *
* (C) Copyright IBM Corp. 2000, 2005.  All rights reserved.      *
*                                                                    *
*****
JOBNAME: DNET074R  SYSTEM ABEND: 0C7          DEMOMVS  2005/04/30  11:32:11

<H1> I B M   F A U L T   A N A L Y Z E R   S Y N O P S I S

A system abend 0C7 occurred in module SAM2 program SAM2 at offset X'640'.

A program interruption code 0007 (Data Exception) is associated with this abend
and indicates that:

    A decimal digit or sign was invalid.

The cause of the failure was program SAM2 in module SAM2.  The COBOL source code
that immediately preceded the failure was:

Source
Line #
-----
000157          COMPUTE CUST-ACCT-BALANCE =
000158          CUST-ACCT-BALANCE + WS-UPDATE-NUM

```

An example of a Fault Analyzer Report

```

Display Filter View Print Options Help
-----
SDSF OUTPUT DISPLAY DNET074R JOB06769  DSID   106 LINE 20          COLUMNS 02- 81
COMMAND INPUT ==> █          SCROLL ==> HALF
The cause of the failure was program SAM2 in module SAM2.  The COBOL source code
that immediately preceded the failure was:

Source
Line #
-----
000157          COMPUTE CUST-ACCT-BALANCE =
000158          CUST-ACCT-BALANCE + WS-UPDATE-NUM

The COBOL source code for data fields involved in the failure:

Source
Line #
-----
000031          05  WS-UPDATE-NUM          PIC S9(9)V99  COMP-3  VALUE +0.
000050          05  CUST-ACCT-BALANCE     PIC S9(7)V99  COMP-3.

Data field values at time of abend:

CUST-ACCT-BALANCE = X'7B7C5C505A'  *** Cause of error ***
WS-UPDATE-NUM     = 1.23

<H1> I B M   F A U L T   A N A L Y Z E R   E V E N T   S U M M A R Y

The

```

You can use the Real-Time report, but there is an even better way to research an abend...

The Fault Analyzer Online Interface

```

File Options View Services Help
-----
IBM Fault Analyzer - Fault Entry List                               Line 1 Col 1 80
Command ==> _____ Scroll ==> CSR

Fault History File or View : 'FAULTANL.V5R1.HIST'

{The following line commands are available: ? (Query), V (View real-time
report), I (Interactive reanalysis), B (Batch reanalysis), D (Delete).}

  Fault_ID Job/Tran User_ID Module Sys/Job Abend Date Tran_ID Tim
  ___ F00054 WEBSRV7 WEBSRV /usr/lpp DEMOMVS SOC4 2005/04/30 n/a 19:
  i F00053 DNET074R DNET074 SAM2 DEMOMVS SOC7 2005/04/30 n/a 11:
  ___ F00047 DNET152 DNET152 STARTAPP DEMOMVS U4038 2005/04/29 n/a 13:
  ___ F00045 DNET311C DNET311 SAM2 DEMOMVS SOC7 2005/04/28 n/a 11:
  ___ F00044 DNET3111 DNET311 SAM1 DEMOMVS SOCB 2005/04/28 n/a 06:
  ___ F00043 GEN001 ETPOT51 REGIONA DEMOMVS SOCB 2005/04/27 n/a 21:
  ___ F00042 GEN001 ETPOT51 REGIONA DEMOMVS SOCB 2005/04/27 n/a 21:
  ___ F00041 GEN001 ETPOT51 REGIONA DEMOMVS SOCB 2005/04/27 n/a 21:
  ___ F00040 WEBSRV7 /usr/lpp DEMOMVS SOC4 2005/04/27 n/a 19:
  ___ F00039 DNET152 DNET152 STARTAPP DEMOMVS U4038 2005/04/27 n/a 09:
  ___ F00038 GEN001 ETPOT59 REGIONA DEMOMVS SOCB 2005/04/27 n/a 04:
  ___ F00037 GEN51 ETPOT51 REGIONA DEMOMVS SOCB 2005/04/27 n/a 04:
  ___ F00036 GEN001 ETPOT62 REGIONA DEMOMVS SOCB 2005/04/27 n/a 04:
  
```

I for interactive reanalysis.
Or **V** to view the real-time report.

Enter

Fault Analyzer Interactive Reanalysis

File View Services Help

Interactive Reanalysis Report Line 1 Col 1 80

Command ==> _____ Scroll ==> CSR

JOBNAME: DNET074R SYSTEM ABEND: 0C7 DEMOMVS 2005/04/30 11:32:11

Fault Summary:
 Module SAM2, program SAM2, source line # **157**: Abend S0C7 (Data Exception).

Select one of the following options and press Enter to access further fault information:

- 1. Synopsis
- 2. Event Summary
- 3. System-Wide Information
- 4. Abend Job Information
- 5. Options in Effect

{Fault Analyzer maximum storage allocated: 1.54 megabytes.}

*** Bottom of data.

The app abended in **THIS** program...

...on **THIS** statement.

Use Point-and-Shoot navigation in Interactive Reanalysis. Just TAB to any yellow-highlighted field and Enter.

Enter

Fault Analyzer Interactive Reanalysis

```

File View Services Help
Program SAM2 Compiler Listing Line 154 Col 1 80
Command ==> Scroll ==> CSR
JOBNAME: DNET074R SYSTEM ABEND: 0C7 DEMOMVS 2005/04/30 11:32:11
000148          WHEN 'NAME '
000149              MOVE TRAN-UPDATE-DATA TO CUST-NAME
000150              COMPUTE TRAN-COUNT = TRAN-COUNT + 1
000151          WHEN 'BALANCE '
000152              EVALUATE TRAN-ACTION
000153                  WHEN 'REPLACE '
000154                      MOVE WS-UPDATE-NUM TO CUST-ACCT-BALANCE
000155                      COMPUTE TRAN-COUNT = TRAN-COUNT + 1
000156                  WHEN 'ADD '
000157                      COMPUTE CUST-ACCT-BALANCE =
000158                          CUST-ACCT-BALANCE + WS-UPDATE-NUM
000159                      COMPUTE TRAN-COUNT = TRAN-COUNT + 1
000160              END-EVALUATE
000161          WHEN 'ORDERS '
000162              EVALUATE TRAN-ACTION
000163                  WHEN 'REPLACE '
000164                      MOVE WS-UPDATE-NUM TO CUST-ORDERS-YTD
000165                      COMPUTE TRAN-COUNT = TRAN-COUNT
000166                  WHEN 'ADD '

```

Browse the program listing for reference

abending statement

PF3

Fault Analyzer Interactive Reanalysis

```
File View Services Help
Interactive Reanalysis Report                               Line 1 Col 1 80
Command ==> _____ Scroll ==> CSR
JOBNAME: DNET074R  SYSTEM ABEND: 0C7                      DEMOMVS   2005/04/30  11:32:11

Fault Summary:
Module SAM2, program SAM2, source line # 157 : Abend S0C7 (Data Exception).

Select one of the following options and press Enter to access further fault
information:
  1. Synopsis
  2. Event Summary
  3. System-Wide Information
  4. Abend Job Information
  5. Options in Effect

{Fault Analyzer maximum storage allocated: 1.54 megabytes.}

*** Bottom of data.
```

Synopsis will show high-level information the abend.

Enter

Fault Analyzer Interactive Reanalysis - Synopsis

```

File View Services Help
Synopsis
Command ==> |
JOBNAME: DNET074R  SYSTEM ABEND: 0C7          DEMOMVS  2005/04/30  11:32:11
Line 1 Col 1 80
Scroll ==> CSR

A system abend 0C7 occurred in module SAM2 program SAM2 at offset X'640'.

A program interruption code 0007 (Data Exception) is associated with this
abend and indicates that:

    A decimal digit or sign was invalid.

The cause of the failure was program SAM2 in module SAM2. The COBOL source
code that immediately preceded the failure was:

Source
Line #
000157
000158
COMPUTE CUST-ACCT-BALANCE =
      CUST-ACCT-BALANCE + WS-UPDATE-NUM

The COBOL source code for data fields involved in the failure:

Source
    
```

The diagram consists of three blue rounded rectangular callout boxes with arrows pointing to specific text elements:

- A box labeled "reason" points to the text "A decimal digit or sign was invalid."
- A box labeled "abending program" points to the text "The cause of the failure was program SAM2 in module SAM2."
- A box labeled "abending statement" points to the COBOL code line "COMPUTE CUST-ACCT-BALANCE = CUST-ACCT-BALANCE + WS-UPDATE-NUM".



Fault Analyzer Interactive Reanalysis - Synopsis

```

File View Services Help
Synopsis
Command ==> |
JOBNAME: DNET074R  SYSTEM ABEND: 0C7          DEMOMVS  2005/04/30  11:32:11
Line 11 Col 1 80
Scroll ==> CSR

Source
Line #
000157          COMPUTE CUST-ACCT-BALANCE =
000158          CUST-ACCT-BALANCE + WS-UPDATE-NUM

The COBOL source code for data fields involved in the failure:

Source
Line #
000031          05  WS-UPDATE-NUM          PIC S9(9)V99  COMP-3  VALUE +0.
000050          05  CUST-ACCT-BALANCE      PIC S9(7)V99  COMP-3.

Data field values at time of abend:

CUST-ACCT-BALANCE = X'7B7C5C505A'  *** Cause of error ***
WS-UPDATE-NUM     = 1.23

*** Bottom of data.
  
```

Variable that had the bad data

PF3

Fault Analyzer Interactive Reanalysis

```
File View Services Help
-----
Interactive Reanalysis Report                               Line 1 Col 1 80
Command ==> _____ Scroll ==> CSR
JOBNAME: DNET074R  SYSTEM ABEND: 0C7                      DEMOMVS   2005/04/30  11:32:11

Fault Summary:
Module SAM2, program SAM2, source line # 157 : Abend S0C7 (Data Exception).

Select one of the following options and press Enter to access further fault
information:
-  1. Synopsis
   2. Event Summary
   3. System-Wide Information
   4. Abend Job Information
   5. Options in Effect

{Fault Analyzer maximum storage allocated: 1.54 megabytes.}

*** Bottom of data.
```

Event Summary will show the call chain and program events

Enter

Fault Analyzer Interactive Reanalysis – Event Summary

SAM1 was the main program.
SAM2 was a subroutine.

```

File View Services Help
Event Summary
Command ==>
JOBNAME: DNET074R  SYSTEM ABEND: 0C7  DEMOMVS  2005/04/30  11:32:11
{The following events are presented in chronological order.}

Event #  Type  Fail Point  Module Name  Program Name  EP Name  Event Location (*)  Loaded
1  Call  SAM1  SAM1  SAM1  L#311 P+AD4  DNET07
2  Call  IGZCPAC  n/a  IGZCFCC  E+2CA  CEE.SC
3  Abend SOC7  *****  SAM2  SAM2  SAM2  L#157 P+640  DNET07
    
```

(*) One or more of the following abbreviations might appear in the "Event Location" column:

- F#n Source file number (refer to detailed event information for file identification)
- L#n Source file line number
- S#n Listing file statement number (refer to detailed event information for file identification)
- M+x Offset from start of load module

Get details about program SAM2

Enter

Fault Analyzer Interactive Reanalysis – program detail

```

File View Services Help
-----
Event 3 of 3: Abend S0C7 *** Point of Failure ***                Line 1 Col 1 80
Command ==> bottom █                                           Scroll ==> CSR
JOBNAME: DNET074R  SYSTEM ABEND: 0C7                            DEMOMVS   2005/04/30  11:32:11

Previous Event Details

Abend Code. . . . . : S0C7
Program Interruption Code . : 0007 (Data Exception)
  A decimal digit or sign was invalid.

COBOL Source Code:
Source
Line #
000157
000158
                                COMPUTE CUST-ACCT-BALANCE =
                                CUST-ACCT-BALANCE + WS-UPDATE-NUM

Data Field Declarations:
Source
Line #
000031          05  WS-UPDATE-NUM          PIC S9(9)V99  COMP-3
000050          05  CUST-ACCT-BALANCE     PIC S9(7)V99  COMP-3
    
```

Detailed info about program SAM2 is shown here.



Fault Analyzer Interactive Reanalysis – program detail

```

File View Services Help
-----
Event 3 of 3: Abend SOC7 *** Point of Failure ***                               Line 68 Col 1 80
Command ==> _____ Scroll ==> CSR
JOBNAME: DNET074R  SYSTEM ABEND: 0C7                DEMOMVS   2005/04/30  11:32:11
R7:  000203A0 (Module SAM2 program SAM2 WORKING-STORAGE SECTION BLW=0000 +
        X'0', symbol WS-FIELDS, source line # 30 )
R8:  00016060 (Module SAM2 program SAM2 LINKAGE SECTION BLL=0002 + X'0',
        symbol TRANSACTION-RECORD, source line # 63 )
R9:  000201A0 (Module SAM2 program SAM2 + X'7F0', source line # 173 )
R10: 0001FAE0 (Module SAM2 program SAM2 + X'130')
R11: 0001FDBC (Module SAM2 program SAM2 + X'40C')
R12: 0001FAAC (Module SAM2 program SAM2 + X'FC')
R13: 19087478 (592776 bytes of storage addressable)
R14: 0001FD14 (Module SAM2 program SAM2 + X'364')
R15: 8001FD20 (Module SAM2 program SAM2 + X'370')

Associated Messages
CEE3207S The system detected a data exception (System Completion Code=0C7).

Associated Storage Areas

*** Bottom of data.

```

Point-and-shoot lookup of error messages.

Enter

Fault Analyzer Interactive Reanalysis – message lookup

```
File View Services Help
-----
Message CEE3207S Explanation                               Line 1 Col 1 80
Command ==> █                                           Scroll ==> CSR
JOBNAME: DNET074R  SYSTEM ABEND: 0C7                     DEMOMVS  2005/04/30  11:32:11

CEE3207S The system detected a data exception (System Completion
          Code=0C7).

Explanation: Your program attempted to use a decimal instruction
incorrectly. See a Principles of Operation manual for a full list of data
exceptions.

Programmer Response: Check the variables associated with the failing
statement to make sure that they have been initialized correctly.

System Action: The thread is terminated.

Symbolic Feedback Code:  CEE347

*** Bottom of data.
```

Error message look-up.

PF3

Fault Analyzer Interactive Reanalysis – Event Summary

```

File View Services Help
-----
Event Summary                                     Line 1 Col 1 80
Command ==> _____ Scroll ==> CSR
JOBNAME: DNET074R  SYSTEM ABEND: 0C7             DEMOMVS   2005/04/30  11:32:11

{The following events are presented in chronological order.}

Event      Fail  Module  Program  EP
#  Type    Point  Name     Name     Name     Event Location (*)  Loaded
1  Call    SAM1   SAM1     SAM1     L#311 P+AD4         DNET07
2  Call    IGZCPAC n/a      IGZCFCC  E+2CA          CEE.SC
3  Abend  SOC7   ***** SAM2     SAM2     L#157 P+640         DNET07
  
```

Get details about SAM1 (the main program)

(*) One or more of the following abbreviations might appear in the "Event Location" column:

- F#n Source file number (refer to detailed event information for file identification)
- L#n Source file line number
- S#n Listing file statement number (refer to detailed event information for file identification)
- M+x Offset from start of load module

Enter

Fault Analyzer Interactive Reanalysis – program detail

```

File View Services Help
-----
Event 1 of 3: Call (DSN Address 19087030)                               Line 1 Col 1 80
Command ==> bottom                                                    Scroll ==> CSR
JOBNAME: DNET074R  SYSTEM ABEND: 0C7                                DEMOMVS  2005/04/30  11:32:11

COBOL Source Code:
Source
Line #
000308      *
000309      *      Subroutine SAM2 will apply an update to a customer re
000310      *
000311      *      CALL 'SAM2' USING CUSTOMER-REC, TRANSACTION-RECORD,
000312      *      WS-TRAN-OK, WS-TRAN-MSG

Data Field Declarations:
Source
Line #
000060      01  CUSTOMER-REC.
000082      01  TRANSACTION-RECORD.
000137      05  WS-TRAN-OK          PIC X      VALUE 'N'.
000139      05  WS-TRAN-MSG        PIC X(50)  VALUE S

```


 Enter

Fault Analyzer Interactive Reanalysis – program detail

```

File View Services Help
-----
Event 1 of 3: Call (DSA Address 19087030)                               Line 62 Col 1 80
Command ==> _____ Scroll ==> CSR
JOBNAME: DNET074R  SYSTEM ABEND: 0C7          DEMOMVS   2005/04/30  11:32:11
R10: 00007EFC (Module SAM1 program SAM1 + X'12C')
R11: 00008588 (Module SAM1 program SAM1 + X'7B8')
R12: 00007ECC (Module SAM1 program SAM1 + X'FC')
R13: 19087030 (593872 bytes of storage addressable)
R14: 800088A6 (Module SAM1 program SAM1 + X'AD6', source line # 311 )
R15: 99051CC0 (Module IGZCPAC + X'406E8')

Associated Open Files

File Name . . . . . : CUSTFILE
File Name . . . . . : CUSRPT
File Name . . . . . : TRANFILE

Associated Storage Areas

Next Event Details

*** Bottom of data.
    
```

You can get information about files that were open when the program abended.



Fault Analyzer Interactive Reanalysis – file detail

```

File View Services Help
File Information
Command ==> _____ Scroll ==> CSR
JOBNAME: DNET074R  SYSTEM ABEND: 0C7          DEMOMVS  2005/04/30  11:32:11
File Name . . . . . : CUSTFILE
Data Set Name . . . . . : DNET074.ADLAB.CUSTOMER.FILE
File Attributes . . . . . : ORGANIZATION=INDEXED VSAM, ACCESS MODE=DYNAMIC,
                           RECFM=VARIABLE
Last I/O Function . . . . . : READ
Open Status . . . . . : I-0
File Status Code . . . . . : 0
Return Code . . . . . : X'0'
Function Code . . . . . : X'0'
Feedback Code . . . . . : X'0'

Record Key. . . . . : Key position 0, length 6
Address  Offset      Hex          EBCDIC
00009978          F1F1F1F1 F2C1          *11112A          *

Current Record. . . . . : Record data length 334
Address  Offset      Hex          EBCDIC
00009978          F1F1F1F1 F2C1D585 A2A26B40 D3A49285 *11112ANess, Luke*
00009988      +10    40404040 4040407B 7C5C505A 000003E9 *      #@*&!...Z*
    
```

Fault Analyzer Interactive Reanalysis – link to File Manager

```

File  View  Services  Help
----- Data Set Actions -----
Data Set . . . . : DNET074.ADLAB.CUSTOMER.FILE

Select one of the following options and press Enter:
1. Edit
2. Browse

File Status Code. . . . . : 0
Return Code . . . . . : X'0'
Function Code . . . . . : X'0'
Feedback Code . . . . . : X'0'

Record Key. . . . . : Key position 0, length 6
Address  Offset      Hex                                EBCDIC
00009978              F1F1F1F1 F2C1                                *11112A          *

Current Record. . . . . : Record data length 334
Address  Offset      Hex                                EBCDIC
00009978              F1F1F1F1 F2C1D585 A2A26B40 D3A49285 *11112AN
00009988      +10    40404040 4040407B 7C5C505A 000003E9 *
    
```

Fault Analyzer interfaces with File Manager to Edit or Browse the file.

Enter

Fault Analyzer Interactive Reanalysis – link to File Manager

```

Process  Options  Help
-----
File Manager Edit DNET074.ADLAB.CUSTOMER.FILE
Command ==> █
Type KSDS      Refresh on save N
CUST-ID REC-TYPE NAME          ACCT-BALANCE  ORDERS-YTD ADDR
#3      #4      #5          #6          #7 #8      +
AN 1:5  AN 6:1  AN 7:17      PD 24:5      BI 29:4 AN 33:20
<---->  -      <----+----1-----> <----+----1> <----+----1> <----+----1-
000000 **** Top of data ****
000001 03115  A          Graham, Holly          254.53          1 3100 Oaktre
- - - - - CONTACT-REC - - - - - 2 Line(s) suppressed
000004 05580  A          Moore, Adeline         498.95          3 4700 S. Syr
- - - - - CONTACT-REC - - - - - 3 Line(s) suppressed
000008 06075  A          Dubree, Dustin        192.98          1 9229 Delega
000009 06927  A          Buchs, Jillian        99.99           0 41 Avendale
000010 07025  A          Marx, Audrey          100.08          1 90 South Ca
- - - - - CONTACT-REC - - - - - 3 Line(s) suppressed
000014 11112  A          Ness, Luke            *****          1001 5166 Oak Gr
- - - - - CONTACT-REC - - - - - 2 Line(s) suppressed
000015 11112  A          Ness, Luke            244.42          1 1551 S. Was
- - - - - CONTACT-REC - - - - - 2 Line(s) suppressed
000020 11112  A          Ness, Luke            86.88           0 221 Yale Rd
- - - - - CONTACT-REC - - - - - 1 Line(s) suppressed
    
```

The bad data in the file...
(the cause of this abend).

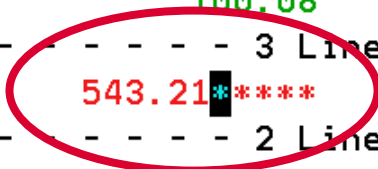


Fault Analyzer Interactive Reanalysis – link to File Manager

```

Process  Options  Help
-----
File Manager Edit DNET074.ADLAB.CUSTOMER.FILE
Command ==> _____ Scroll CSR
Type KSDS Refresh on save N Format TABL
CUST-ID REC-TYPE NAME ACCT-BALANCE ORDERS-YTD ADDR
#3 #4 #5 #6 #7 #8 +
AN 1:5 AN 6:1 AN 7:17 PD 24:5 BI 29:4 AN 33:20
<---> - <---+---1---+> <---+---1> <---+---1> <---+---1-
000000 **** Top of data ****
000001 03115 A Graham, Holly 254.53 1 3100 Oaktre
- - - - - CONTACT-REC - - - - - 2 Line(s) suppressed
000004 05580 A Moore, Adeline 498.95 3 4700 S. Syr
- - - - - CONTACT-REC - - - - - 3 Line(s) suppressed
000008 06075 A Dubree, Dustin 192.98 1 9229 Delega
000009 06927 A Buchs, Jillian 99.99 0 41 Avendale
000010 07025 A Marx, Audrey 100.08 1 90 South Ca
- - - - - CONTACT-REC - - - - - 3 Line(s) suppressed
000014 11112 A Ness, Luke 543.21***** 1001 5166 Oak Gr
- - - - - CONTACT-REC - - - - - 2 Line(s) suppressed
000017 11344 A Grai, Pottg 244.42 1 1551 S. Was
- - - - - CONTACT-REC - - - - - 2 Line(s) suppressed
000020 12689 A Boyd, Luke A. 86.88 0 221 Yale Rd
- - - - - CONTACT-REC - - - - - 1 Line(s) suppressed
    
```

Repairing the data in the file.



Fault Analyzer Interactive Reanalysis – System Wide Information

File View Services Help

Interactive Reanalysis Report

Line 1 Col 1 80

Command ==>

Scroll ==> CSR

TRANID: CD08

CICS ABEND: ASRA

MVS2

2003/10/28

18:24:21

Fault Summary:

Module CDCB0080, program CDCB0080, source line # 677 : CICS abend ASRA.

Select one of the following options and press Enter to access further fault information:

- 1. Synopsis
- 2. Event Summary
- 3.** System-Wide Information
- 4. Abend Job Information
- 5. Options in Effect

{Fault Analyzer maximum storage allocated: 2.48 megabytes.}

*** Bottom of data.

Fault Analyzer Interactive Reanalysis – System Wide Information

File View Services Help

System-Wide Information

Line 1 Col 1 80

Command ==>

Scroll ==> CSR

TRANID: CD08

CICS ABEND: ASRA

MVS2

2003/10/28

18:24:21

Open Files

CICS Information

DB2 Information

IMS Information

Storage Areas

Messages

Language Environment Heap Analysis

*** Bottom of data.

Select Last CICS 3270 Screen Buffer

File View Services Help

CICS Information

Line 1 Col 1 80

Command ==>

Scroll ==> CSR

TRANID: CD08

CICS ABEND: ASRA

MVS2

2003/10/28

18:24:21

CICS Control Blocks

CICS Transaction Storage

Last CICS 3270 Screen Buffer

Last CICS 3270 Screen Buffer Hex

Summarized CICS Trace

CICS Trace Formatting

CICS Recovery Manager

*** Bottom of data.

Enter

WebSphere Browser

Directory of fault history file 'dnet070.idi.history' - Microsoft Internet Explorer

File Edit View Favorites Tools Help

Back Forward Stop Refresh Home Search Favorites Media

Address <http://demomvs.demopkg.ibm.com/FAULTANAL/dnet070.idi.history> Go

Links Search the Web with Lycos IBM Business Transformation Homepage IBM Internal Help Homepage IBM Standard Software Installer Media

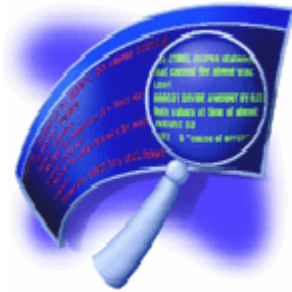
Fault entries for history file 'dnet070.idi.history'

FAULT_ID	PROGRAM	MD_PAGES	DUP_COUNT	TRAN_ID	JOBNAME	JOB/TRAN	JOB_TYPE	ABEND	MODULE	USER_TITLE
F00531	IDISCBLF	0	0	n/a	DNET070A	DNET070A	Batch	S0C7	IDISCBLF	n/a
F00530	IDISCBLF	0	3	n/a	DNET070A	DNET070A	Batch	S0C7	IDISCBLF	n/a
F00498	IDISCBLF	0	0	n/a	DNET070A	DNET070A	Batch	S0C7	IDISCBLF	n/a
F00107	CDCB0080	0	0	CD08	CD08DA	CD08	CICS	ASRA	CDCB0080	n/a
F00100	ICCB0030	0	0	n/a	ICCB0030	ICCB0030	Batch	U0476	ICCB0030	n/a
F00098	ICCB0060	0	0	n/a	ICCB0060	ICCB0060	Batch	S0CB	ICCB0060	n/a
F00087	DACBDH01	0	0	n/a	DACBDH03	DACBDH03	Batch	U0100	DACBDH01	n/a
F00083	CSCB0040	0	0	CS04	CSCB0040	CS04	CICS	ASRA	CSCB0040	n/a
F00534	IDISCBLF	0	0	n/a	DNET070A	DNET070A	Batch	S0C7	IDISCBLF	n/a

Shortcut to dnet070.idi.history(F00531)

Local intranet

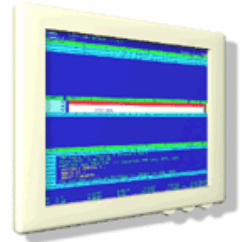
Fault Analyzer Summary



- **Single Fault Analysis Product For All Environments**
- **Consistent Across Languages**
 - COBOL, C, C++, PL/I, Assembler
- **Environments Supported**
 - CICS, TSO, JES/Batch, IMS, DB2, Unix System Services, WebSphere MQ, WebSphere Application Server™ and Java
- **Modes Of Operation**
 - Real Time Analysis
 - Batch Dump Re-analysis
 - Interactive Dump Re-analysis
- **Fault Analyzer Features:**
 - Analysis At Application Level, translation of low-level “Dump” information
 - Interactive Point-and-Shoot Navigation
 - Real-Time Information Capture
 - Expands Abend Code And Message Descriptions
 - No Recompile Of Applications
 - No JCL Changes
 - Interface to File Manager
 - Integrated 64-bit DB2 version 8 support
- **Interfaces**
 - ISPF
 - Web browser
 - CICS

IBM Debug Tool Utilities and Advanced Functions

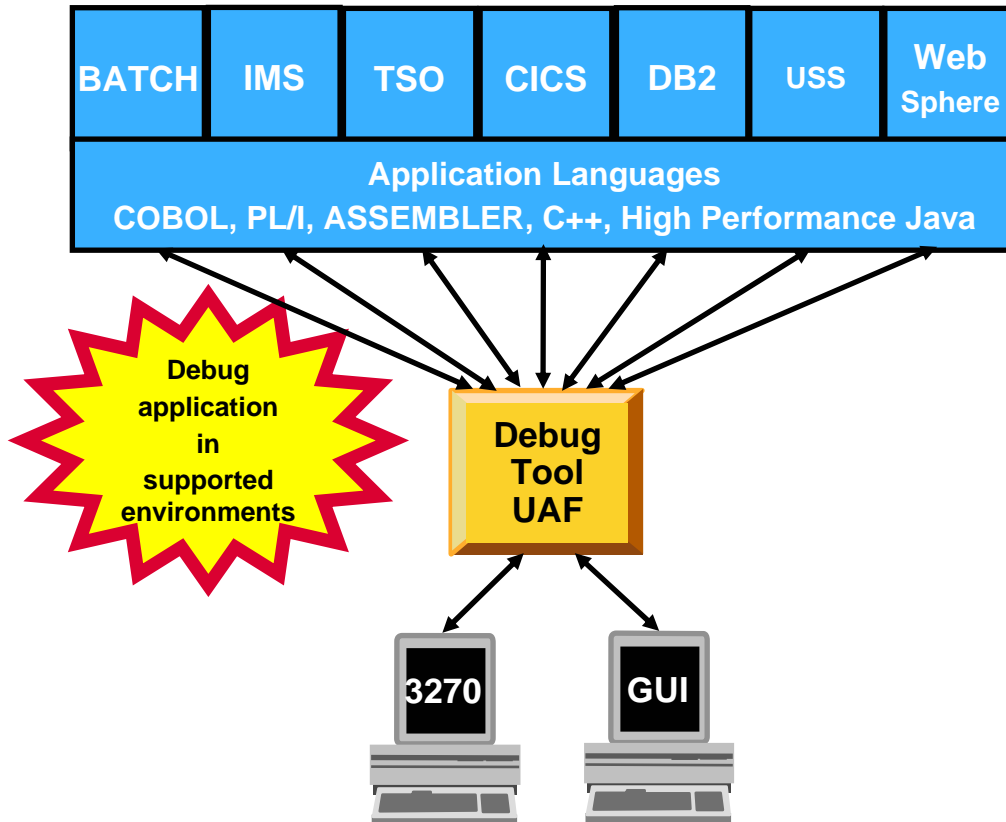
What is Debug Tool Utilities and Advanced Functions ?



- A tool that helps you test programs, and monitor and control the execution of programs
- An interactive, source level debugger
- A set of utilities:
 - *Load Module Analyzer*
 - *COBOL Modernization Utility*
 - *Code Coverage Utility*

Debug Tool UAF Functional Overview

Provides debugging of enterprise applications



■ Features:

- Playback support
- Automonitor support for COBOL and PL/I programs
- An interface to the Fault Analyzer tool
- A code coverage tool
- Support for identifying and converting OS/VS COBOL source programs to ANSI 85 standard COBOL
- Preparation and compile facilities for programs
- Commands to query, allocate, and free files

■ Consistent Across Languages

- COBOL, C, C++, PL/I, Assembler, HP Java

■ Environments Supported

- CICS, TSO, JES/Batch, IMS Including IMS/TM, DB2 Including Stored Procedures
- Uses the GUI debug interface built into products such as:
 - *Websphere Developer for zSeries (WDz)*
 - *Websphere Dev. Debugger for zSeries (WDDz)*

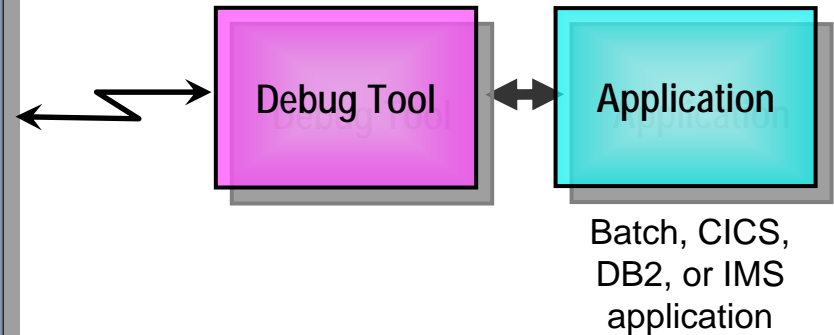
How do I interface with Debug Tool Utilities and Advanced Functions ?

```

Session A - STLMVS1.WS - [24 x 80]
COBOL LOCATION: CBLATP2 :> 543.1
Command ==> Scroll ==> PAGE
MONITOR -----1-----2-----3-----4-----5-----6 LINE: 1 OF 4
***** TOP OF MONITOR *****
0001 1 OUTPUT-FLAG 'D'
0002 2 H1-CURR-DATE '01/05/03'
0003 3 GM-MSG-ID '01I'
0004 4 ACTION
***** BOTTOM OF MONITOR *****

SOURCE: CBLATP2 --1-----2-----3-----4-----5--- LINE: 541 OF 939
541
542 DISPLAY 'ENTER Action:'.
543 ACCEPT SCREEN-INPUT.
544 MOVE FUNCTION UPPER-CASE (SCREEN-INPUT) TO ACTION.
545
546 ** End program when EXIT is entered and

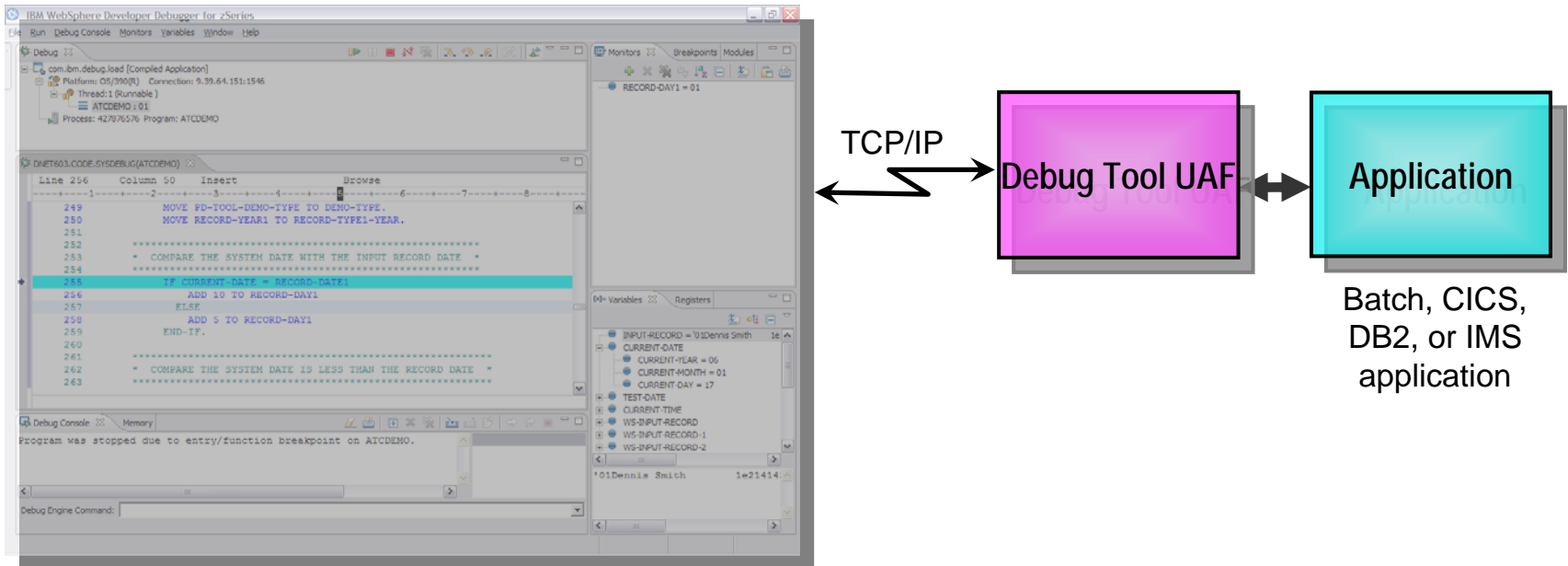
LOG 0-----1-----2-----3-----4-----5----- LINE: 36 OF 39
0036 GO ;
0037 You were prompted because the IGZ00H condition was raised in your program
0038 IGZ00H is a severity or class 3 condition.
0039 The current location is CBLATP2 :> CBLATP2 :> 543.1
PF 1:MON 2:STEP 3:QUIT 4:LIST 5:FIND 6:AT/CLEAR
PF 7:UP 8:DOWN 9:GO 10:ZOOM 11:ZOOM LOG 12:RETRIEVE
MA a A 03/002
  
```



■ Full-screen mode

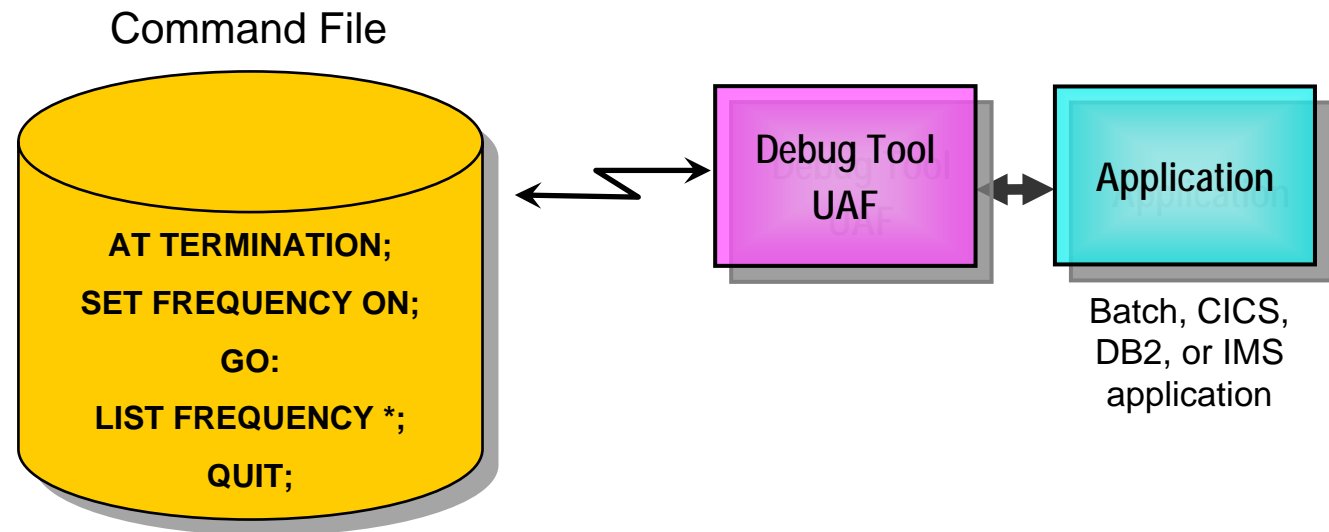
- 3270 interface
- Common interface for all z/OS runtimes, CICS, JES, IMS TM, DB2 Stored Procedures, etc.

How do I interface with Debug Tool UAF?



- **WebSphere Developer Debugger for zSeries (WDDz):**
 - the host application starts Debug Tool, which connects to a remote debugger on your workstation
 - Point and Click ease of use
 - Uses the GUI debug interface built into products such as:
 - **WebSphere Developer for zSeries (WDz)**

How do I interface with Debug Tool Utilities and Advanced Functions ?



■ Debug Tool “Batch” Command File mode

- Run an automatic script that controls program execution and message display
- For creation of:
 - Automated condition checking and message display
 - Regression Test cases
 - Production Runtime problem diagnosis

Starting a Debug Tool UAF session

```

File Edit Edit_Settings Menu Utilities Compilers Test Help
EDIT      DNET074.ADWORK.DATA(SAMRUN) - 01.17      Columns 00001 00072
Command ==> sub
***** ***** Top of Data *****
000001 //DNET074R JOB REGION=4M,
000002 // TIME=(1),MSGCLASS=H,NOTIFY=DNET074,MSGLEVEL=(1,1)
000003 //*****
000004 //*****
000005 //*  RUN SAMPLE PROGRAM SAM1
000006 //*
000007 //*  CAUSES ABEND IN SUBPROGRAM SAM2
000008 //*****
000009 //RUNSAM1 EXEC PGM=SAM1,REGION=4M,
000010 //  PARM='/TEST(,,MFI%TRMLU016:)'
000011 //STEPLIB DD DSN=DNET074.ADWORK.LOAD,DISP=SHR
000012 //          DD DSN=DEBUG.V5R1.SEQAMOD,DISP=SHR
000013 //SYSPRINT DD SYSOUT=*
000014 //CUSTRPT DD SYSOUT=*
000015 //CUSTFILE DD DSN=DNET074.ADLAB.CUSTOMER.FILE,DISP=SHR
000016 //TRANFILE DD *
000017 *TRAN  KEY          ACTION  FIELD NAME  VALUE
000018 *-----  -----  -----  -----  +999999..
000019 *PDATE 07025A      ADD      BALANCE    +00000001

```

To start Debug Tool UAF in a batch job, just add a PARM to the EXEC statement

Debug Tool Utilities and Advanced Functions

```

COBOL      LOCATION: SAM1 initialization
Command ==> step
                                                    Scroll ==> CSR
MONITOR  --+---1---+---2---+---3---+---4---+---5---+---6 LINE: 0 OF 0
***** TOP OF MONITOR *****
***** BOTTOM OF MONITOR *****

SOURCE:  SAM1  +---1---+---2---+---3---+---4---+---5---+ LINE: 1 OF 489
1 *****
2 * LICENSED MATERIALS - PROPERTY OF IBM
3 * ALL RIGHTS RESERVED
4 *****
5 * PROGRAM:  SAM1
6 *

LOG 0  --+---1---+---2---+---3---+---4---+---5---+ LINE: 30 OF 32
0030 IBM Debug Tool Version 5 Release 1 Mod 0
0031 04/30/2005 11:24:15 PM
0032 5655-M18 and 5655-M19: (C) Copyright IBM Corp. 1992, 2004
***** BOTTOM OF LOG *****
PF  1:?          2:STEP          3:QUIT          4:LIST          5:FIND          CLEAR
PF  7:UP         8:DOWN          9:GO           10:ZOOM         11:ZOOM        RIEVE
    
```

STEP through the program statement by statement



Debug Tool Utilities and Advanced Functions

```

COBOL      LOCATION: SAM1 ENTRY
Command ==> █                               Scroll ==> CSR
MONITOR  --+----1----+----2----+----3----+----4----+----5----+----6 LINE: 1 OF 2
***** TOP OF MONITOR *****
0001  1 ***** AUTOMONITOR *****
0002  There are no variables in the state
***** BOTTOM OF MONITOR *****

SOURCE:  SAM1 +----1----+----2----+----3----+----4----+----5---- LINE: 29 OF 489
29  PROGRAM-ID. SAM1.
30  ENVIRONMENT DIVISION.
31  INPUT-OUTPUT SECTION.
32  FILE-CONTROL.
33
34          SELECT CUSTOMER-FILE ASSIGN TO CUSTFILE

LOG 0----+----1----+----2----+----3----+----4----+----5---- LINE: 30 OF 33
0030 IBM Debug Tool Version 5 Release 1 Mod 0
0031 04/30/2005 11:24:15 PM
0032 5655-M18 and 5655-M19: (C) Copyright IBM Corp. 1992, 2004
0033 STEP ;
PF  1:?          2:STEP          3:QUIT          4:LIST          5:FIND          CLEAR
PF  7:UP         8:DOWN          9:GO           10:ZOOM         11:ZOOM        RIEVE
    
```

PF2 will STEP by default.
You can customize your PF key settings.



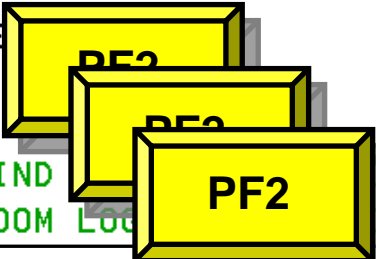
Debug Tool Utilities and Advanced Functions

```

COBOL      LOCATION: SAM1 :> 260.1
Command ==> |
                                                    Scroll ==> CSR
MONITOR  --+---1---+---2---+---3---+---4---+---5---+---6 LINE: 1 OF 5
***** TOP OF MONITOR *****
0001  1 ***** AUTOMONITOR *****
0002  02 SAM1:>CURRENT-DATE
0003  03 SAM1:>CURRENT-YEAR      X'0000'
0004  03 SAM1:>CURRENT-MONTH    X'0000'
0005  03 SAM1:>CURRENT-DAY      X'0000'
***** BOTTOM OF MONITOR *****
SOURCE:  SAM1 +---1---+---2---+---3---+---4---+---5--- LINE: 258 OF 489
258
259      000-MAIN.
260      ACCEPT CURRENT-DATE FROM DATE.
261      ACCEPT CURRENT-TIME FROM TIME.
262      DISPLAY 'SAM1 STARTED DATE = ' CURRENT-MONTH '/'
263      CURRENT-DAY '/' CURRENT-YEAR ' (mm/dd/yy) '.
LOG 0 ---+---1---+---2---+---3---+---4---+---5--- LINE: 31 OF 34
0031  04/30/2005 11:24:15 PM
0032  5655-M18 and 5655-M19: (C) Copyright IBM Corp. 1992, 20
0033  STEP ;
0034  STEP ;
PF  1:?          2:STEP          3:QUIT          4:LIST          5:FIND          6:AR
PF  7:UP         8:DOWN         9:GO           10:ZOOM         11:ZOOM LOG    VE
    
```

The Red Line is the current statement.

STEP a few times...



Debug Tool Utilities and Advanced Functions

```

COBOL      LOCATION: SAM1 :> 267.1
Command ==>                                     Scroll ==> CSR
MONITOR  --+----1----+----2----+----3----+----4----+----5----+----6 LINE: 1 OF 2
***** TOP OF MONITOR *****
0001  1 ***** AUTOMONITOR *****
0002  There are no variables in the statement to display.
***** BOTTOM OF MONITOR *****

SOURCE: SAM1 +----1----+----2----+----5--- LINE: 266 OF 489
266
267  PERFORM 700-OPEN-FILES .
268  PERFORM 800-INIT-REPORT .
269
270  █ PERFORM 100-PROCESS-TRANSACTIONS
271  UNTIL WS-TRAN-EOF = 'Y' .

LOG 0----+----1----+----2----+----3----+----4----+----5----+---- LINE: 36 OF 39
0036  STEP ;
0037  STEP ;
0038  STEP ;
0039  AT 270 ;

PF  1: ?      2: STEP      3: QUIT      4: LIST      5: FIND      6: AT/CLEAR
PF  7: UP      8: DOWN      9: GO       10: ZOOM     11: ZOOM LOG  12: RETRIEVE
    
```

A breakpoint is set at statement 270.

Commands are automatically logged

Debug Tool Utilities and Advanced Functions

```

COBOL  Location: SAM1.1
Command==> go
MONITOR - +---1---+---2---+---3---+---4---+---5---+---6 LINE: 1 OF 2
***** TOP OF MONITOR *****
0001 1 ***** AUTOMONITOR *****
0002 02 SAM1:>WS-TRAN-EOF
***** BOTTOM OF MONITOR *****

```

GO (or PF9) will run to the breakpoint

```

SOURCE: SAM1 +---1---+---2---+---3---+---4---+---5--- LINE: 266 OF 489
266
267          PERFORM 700-OPEN-FILES .
268          PERFORM 800-INIT-REPORT .
269
270          PERFORM 100-PROCESS-TRANSACTIONS
271          UNTIL WS-TRAN-EOF = 'Y' .

```

```

LOG 0 +---1---+---2---+---3---+---4---+---5---+---6 LINE: 37 OF 40
0037 STEP ;
0038 STEP ;
0039 AT 270 ;
0040 GO ;
PF 1: ?          2: STEP          3: QUIT          4: LIST          5: FIND          6: AT/CLEAR
PF 7: UP         8: DOWN           9: GO           10: ZOOM         11: ZOOM LOG     12: RETRIEVE

```

Debug Tool Utilities and Advanced Functions - Breakpoints

- **Debug Tool provides many types of breakpoints.**
- **For example:**
 - At any statement
 - At the change of any variable or storage area
 - When variable(s) reach a value or range
 - When a specific subroutine is called

Debug Tool Utilities and Advanced Functions

```

COBOL   LOCATION: SAM1 :> 270.1
Command ==> mon list                               Scroll ==> CSR
MONITOR ---+---1---+---2---+---3---+---4---+---5---+---6 LINE: 1 OF 2
***** TOP OF MONITOR *****
0001  1 ***** AUTOMONITOR *****
0002  02 SAM1:>WS-TRAN-EOF
***** BOTTOM OF MONITOR *****

SOURCE: SAM1 +---1---+---2---+---3---+---4---+---5---+---6 LINE: 39 OF 42
60      01  CUSTOMER-REC.
61      05  CUST-KEY.
62      10  CUST-ID           PIC X(5).
63      10  CUST-REC-TYPE     PIC X.
64      05  CUST-NAME         PIC X(17).
65      05  CUST-ACCT-BALANCE PIC S9(7)V99  COMP-3.

LOG 0 ---+---1---+---2---+---3---+---4---+---5---+---6 LINE: 39 OF 42
0039  AT 270 ;
0040  GO ;
0041  LIST ( CUST-ACCT-BALANCE ) ;
0042  CUST-ACCT-BALANCE = X'0000000000'

PF  1:?          2:STEP          3:QUIT          4:LIST          5:FIND          CLEAR
PF  7:UP         8:DOWN          9:GO           10:ZOOM         11:ZOOM         BRIEF
    
```

The MONITOR LIST command adds a variable to the Monitor Window.



Debug Tool Utilities and Advanced Functions

A variable you add to the Monitor window stays there for your reference

The AUTOMONITOR displays all variables referenced by the current statement

```

COBOL      LOCATION: SAM1 :> 270.1
Command ==>
MONITOR  --+----1-----+----2-----+----3-----
***** TOP OF MONITOR *****
0001  1  CUST-ACCT-BALANCE      X'0000000000'
0002  2  ***** AUTOMONITOR *****
0003  02 SAM1:>WS-TRAN-EOF
***** BOTTOM OF MONITOR *****
    
```

```

SOURCE: SAM1 +----1-----+----2-----+----3-----+----4-----+----5----- LINE: 60 OF 489
60      01  CUSTOMER-REC.
61      05  CUST-KEY.
62      10  CUST-ID              PIC X(5).
63      10  CUST-REC-TYPE        PIC X.
64      05  CUST-NAME            PIC X(17).
65      05  CUST-ACCT-BALANCE    PIC S9(7)V99  COMP-3.
    
```

```

LOG 0----+----1-----+----2-----+----3-----+----4-----+----5----- LINE: 41 OF 44
0041  LIST ( CUST-ACCT-BALANCE ) ;
0042  CUST-ACCT-BALANCE = X'0000000000'
0043  MONITOR
0044  LIST ( CUST-ACCT-BALANCE ) ;
PF  1:?      2:STEP      3:QUIT      4:LIST      5:FIND      CLEAR
PF  7:UP     8:DOWN     9:GO       10:ZOOM     11:ZOOM     RELIEVE
    
```

You can ZOOM (or PF10) any window to make it full-screen



Debug Tool Utilities and Advanced Functions

COBOL LOCATION: SAM1 :> 270.1

Command ==>

ZOOMed in on the Source Window.

Scroll ==> CSR

SOURCE: SAM1 +-----1-----2-----3----- LINE: 60 OF 489

```

60          01  CUSTOMER-REC.
61              05  CUST-KEY.
62                  10  CUST-ID                PIC X(5).
63                  10  CUST-REC-TYPE          PIC X.
64              05  CUST-NAME                  PIC X(17).
65              05  CUST-ACCT-BALANCE          PIC S9(7)V99  COMP-3.
66              05  CUST-ORDERS-YTD           PIC S9(5)    COMP.
67              05  CUST-ADDR                 PIC X(20).
68              05  CUST-CITY                 PIC X(14).
69              05  CUST-STATE                PIC X(02).
70              05  CUST-COUNTRY              PIC X(11).
71              05  CUST-MONTH                PIC S9(7)V99  COMP-3  OCCURS 12
72              05  CUST-OCCUPATION           PIC X(30).
73              05  CUST-NOTES                PIC X(120).
74              05  CUST-LAB-DATA-1           PIC X(05).
75              05  CUST-LAB-DATA-2           PIC X(40).
76
77          FD  TRANSACTION-FILE
78              RECORDING MODE IS F
    
```

PF 1:? 2:STEP 3:QUIT 4:LIST 5:FIND CLEAR

PF 7:UP 8:DOWN 9:GO 10:ZOOM 11:ZOOM RIEVE

PF10

Debug Tool Utilities and Advantages

GO runs the program.
This application abended in a subroutine. And DT intercepted the abend.

```

COBOL  Location: SAM2 157.1
Command ==> go
***** TOP OF MONITOR *****
0001 1 CUST-ACCT-BALANCE X'7B7C5C505A'
0002 2 ***** AUTOMONITOR *****
0003 02 SAM2:>CUST-ACCT-BALANCE X'7B7C5C505A'
0004 02 SAM2:>WS-UPDATE-NUM +000000001.23
***** BOTTOM OF MONITOR *****

```

This bad data caused the abend

```

SOURCE: SAM2 +---1---+---2---+---3---+---4---+---5--- LINE: 157 OF 174
157 COMPUTE CUST-ACCT-BALANCE =
158 CUST-ACCT-BALANCE + WS-UPDATE-NUM
159 COMPUTE TRAN-COUNT = TRAN-COUNT + 1
160 END-EVALUATE
161 WHEN 'ORDERS '
162 EVALUATE TRAN-ACTION

```

This statement abended

```

LOG 0 +---1---+---2---+---3---+---4---+---5--- LINE: 51 OF 54
0051 The operating system has generated the following message:
0052 CEE3207S The system detected a data exception (System Completion
0053 Code=0C7).
0054 The current location is SAM2 ::> SAM2 :> 157.1.
PF 1:? 2:STEP 3:QUIT 4:LIST 5:FIND 6:AT/CLEAR
PF 7:UP 8:DOWN 9:GO 10:ZOOM 11:ZOOM LOG 12:RETRIEVE

```

Debug Tool Utilities and Advanced Functions

```

COBOL   LOCATION: SAM2 :> 157.1
Command ==>
MONITOR  --+---1---+---2---+---3---+---4---+---5---+---6---+---7---+---8---+---9---+---10---+---11---+---12---+---13---+---14---+---15---+---16---+---17---+---18---+---19---+---20---
***** TOP OF MONITOR *****
0001  1 CUST-ACCT-BALANCE  X'7B7C5C505A'
0002  2 ***** AUTOMONITOR *****
0003  02 SAM2:>CUST-ACCT-BALANCE  123
0004  02 SAM2:>WS-UPDATE-NUM  +000000001.23
***** BOTTOM OF MONITOR *****

SOURCE: SAM2 +---1---+---2---+---3---+---4---+---5---+---6---+---7---+---8---+---9---+---10---+---11---+---12---+---13---+---14---+---15---+---16---+---17---+---18---+---19---+---20--- LINE: 157 OF 174
157  COMPUTE CUST-ACCT-BALANCE =
158          CUST-ACCT-BALANCE + WS-UPDATE-NUM
159          COMPUTE TRAN-COUNT = TRAN-COUNT + 1
160          END-EVALUATE
161          WHEN 'ORDERS '
162          EVALUATE TRAN-ACTION

LOG 0 ---+---1---+---2---+---3---+---4---+---5---+---6---+---7---+---8---+---9---+---10---+---11---+---12---+---13---+---14---+---15---+---16---+---17---+---18---+---19---+---20--- LINE: 51 OF 54
0051 The operating system has generated the following message:
0052   CEE3207S The system detected a data exception (System Completion
0053 Code=0C7).
0054 The current location is SAM2 ::> SAM2 :> 157.1.
PF  1:?          2:STEP          3:QUIT          4:LIST          5:FIND          CLEAR
PF  7:UP         8:DOWN          9:GO           10:ZOOM         11:ZOOM         RIEVE

```

You can fix the bad data and keep running...

...overtyping a value to change it.



Debug Tool Utilities and Advanced Functions provides powerful debugging features

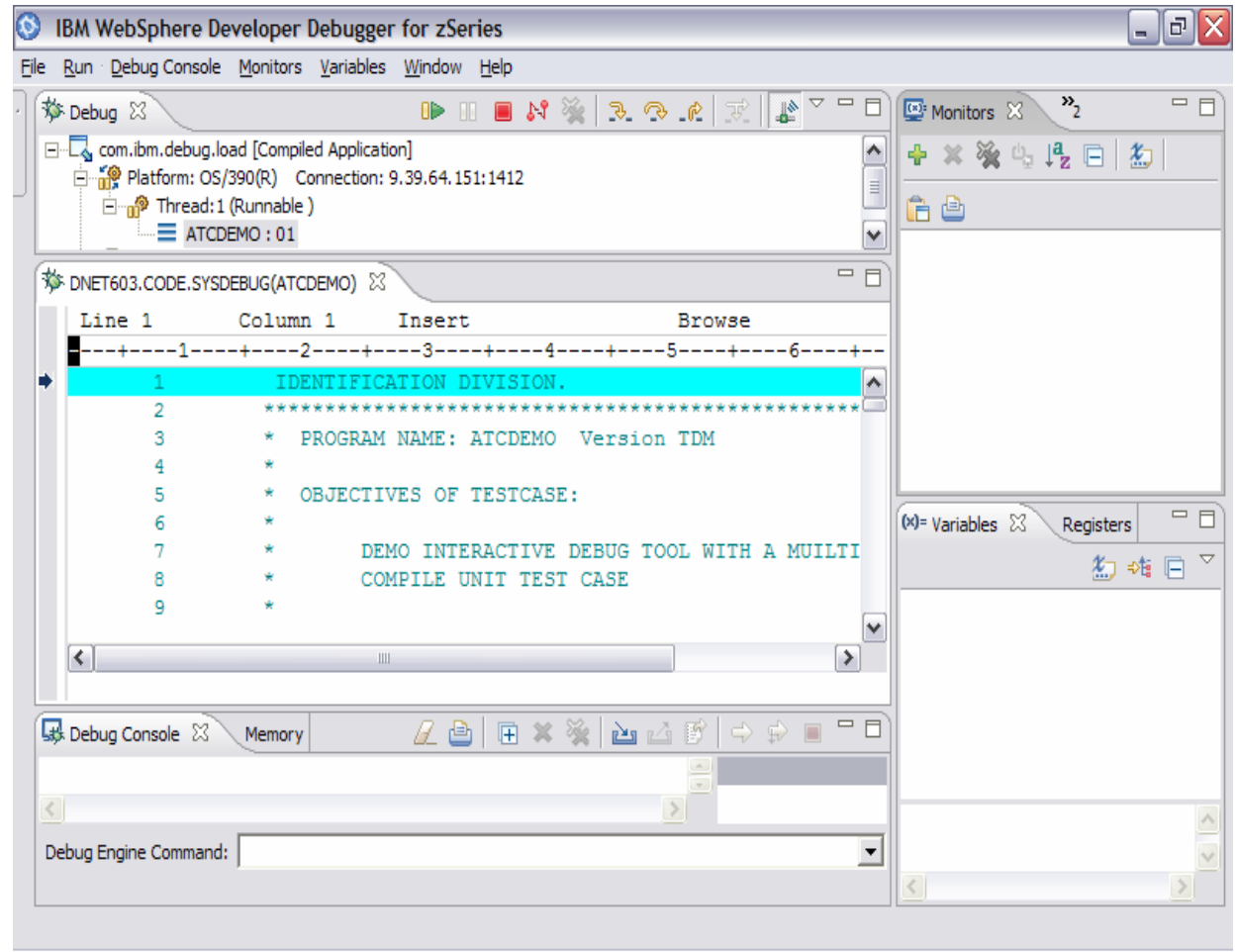
- **Step and run BACKWARD through recorded program statements**
 - See how a program executed
 - View variable values AS THEY WERE during execution
- **Make any breakpoint CONDITIONAL**
 - use COBOL, PLI, or C “IF” statements
- **Run a SCRIPT at any breakpoint**
 - Put programs statements and Debug Tool commands in the script
- **“Patch” your program – effectively add and remove statements on the fly**
- **Customize the user interface**
 - Define your own PF keys, window layouts, and commands

Websphere Developer Debugger for zSeries (WDDz):

- **Desktop Client GUI Interface built on the Eclipse Technology**
- **Common interface for all z/OS runtimes**
- **Provides a “point-and-click” interface as opposed to commands**
- **An “ease-of-use” interface to simplify use for the first time users of Debug Tool**
- **Facilitate the view/update of z/OS storage for assembler and C/C++ programs**

WebSphere Developer Debugger for zSeries:

- **DTUAF with WDDz:**
 - A workstation client software application that is started in a listen mode
 - When the z/OS application is started, the workstation IP address is passed via the LE “TEST” parameter



Present IBM COBOL Compilers and Support:

Product Name	PID(S)	Market Withdraw	Service Withdraw
MVS & VM			
OS/VS COBOL V1.2.4	5740-CB1 5740-LM1	Yes 06/30/1992 Yes 06/30/1992	Yes 06/30/1994 Yes 06/30/1994
VS COBOL II V1.4.0	5668-958 5688-022 5688-023	Yes 06/30/1997 Yes 06/30/1997 Yes 06/30/1997	Yes 03/31/2001 Yes 03/31/2001 Yes 03/31/2001
COBOL/370 1.1	5688-197	Yes 10/31/1995	Yes 09/31/1997
COBOL for MVS & VM Ver 1 Rel 2	5688-197	Yes 09/06/2000	Yes 12/31/2001
COBOL for OS/390 & VM Ver 2	5648-A25	Yes 12/31/2002 (MVS feature)	Yes 12/31/2004 (MVS only)
Enterprise COBOL for z/OS V3R1	5655-G53	Yes, 09/27/2002	Yes, 04/04/2004
Enterprise COBOL for z/OS V3R2	5655-G53	No	No
VSE			
DOS/VS COBOL V1.2.4	5746-CB1 5746-LM1	Yes 03/24/1997 Yes 03/24/1997	Yes 12/31/1999 Yes 12/31/1999
VS COBOL II V1.4.0	5668-958, 5688-022	Yes 06/30/1997	Yes 04/28/1998
COBOL for VSE/ESA	5686-068	No	No
LE for VSE/ESA V2R5	5690-VSE	Yes, 12/14/2001	Yes, 12/31/2003
LE for VSE/ESA V2R6	5690-VSE	No	No

COBOL Modernization Function:

- **Identifies COBOL language elements and CICS commands in the input COBOL source programs that are:**
 - Not supported by the target COBOL compiler release
 - Are supported with a different syntax by the target COBOL compiler release
- **Will do one of the following to the identified elements:**
 - Converts them to the equivalent in the target COBOL language release
 - Removes them if they are obsolete and not required in the target COBOL compiler release
 - Flags them for user manual conversion

COBOL Modernization Outputs:

■ Reports

- Identification of source requiring conversion from the source COBOL compiler version to the target COBOL compiler version:
 - Source elements identified
 - Source elements converted
 - etc

■ Converted Source

- Converted COBOL program source
- Converted COBOL copy files

COBOL Modernization Converted COBOL Versions:

Source language	Version	Release	Program number
DOS/VS COBOL	1	3	5746-CB1
OS/VS COBOL	1	2	5740-CB1
VS COBOL II	1	1, 2, or 3	5668-958
COBOL for VSE/ESA	1	1	5686-068
COBOL for MVS & VM	1	2	5688-197
COBOL for OS/390 & VM	2	2	5648-A25

COBOL Modernization COBOL Version to Convert To:

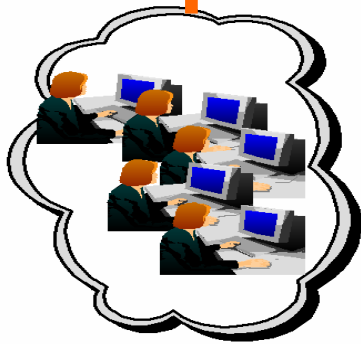
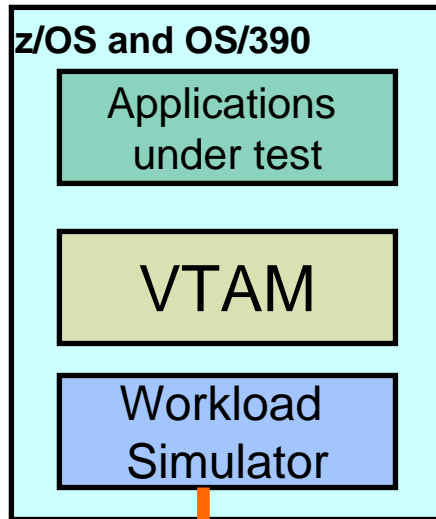
<i>Target COBOL Compiler</i>	Version	Release	Program number
VS COBOL II	1	4	5668-958
COBOL for VSE/ESA	1	1	5686-068
COBOL for MVS & VM	1	2	5688-197
COBOL for OS/390 & VM	2	1	5648-A25
Enterprise COBOL for z/OS and OS/390	3	1	5655-G53

Debug Tool Utilities and Advanced Functions Summary:

- **Common User Interface Across Systems And Subsystems**
- **Consistent Across Languages**
 - COBOL, C/C++, PL/I, Assembler, HP Java
- **Environments Supported**
 - CICS
 - TSO
 - JES/Batch
 - IMS Including IMS/TM
 - DB2 Including Stored Procedures
 - Unix System Services (USS)
 - WebSphere MQ
- **Debug Tool Utilities and Advanced Functions Features:**
 - Source-level Debugging
 - Step mode debugging
 - Multiple Breakpoints
 - at program statements
 - at change of storage / variable
 - at subroutine call / entry
 - Recovery of program ABENDS
 - Step Mode Debugging
 - Dynamic Program Patching
 - Statement Frequency Counter
 - Enhancements for Interactive Debugging
 - “disassembly” interactive debug support
 - An interface to the Fault Analyzer tool
 - Code coverage tool for unit and regression testing
 - COBOL modernization utilities
 - Support for OS/VS COBOL source programs
- **For More Information:**
<http://www-306.ibm.com/software/awdtools/debugtool/>

IBM Workload Simulator

Workload Simulator Functional Overview



Features:

- Auto Generation Of Scripts
- Auto Generation Of Networks
- Controls Resource During Runs
- Simulates Different Terminals, Terminal Features And Terminal Operator Actions
- Executes Independently Of The System Under Test
- Provides utilities for post-test analysis
- **Capture your live 3270 session and automatically create test scripts**
- **A powerful scripting language for modifying and creating your own 3270 and TCP scripts**
- **Run test scripts to simulate network traffic against live systems and applications**
 - Simulate a single user to test application functionality
 - Simulate multiple users to generate a test load
- **Display and report Test Results**
- **Latest PTF allows Rational TestManager to run Workload Simulator**

What features does Workload Simulator provide?

- **Capture your live 3270 session and automatically create test scripts**
- **A powerful scripting language for modifying and creating your own 3270 and TCP scripts**
- **Run test scripts to simulate network traffic against live systems and applications**
 - Simulate a single user to test application functionality
 - Simulate multiple users to generate a test load
- **Display and report Test Results**

What can I test using Workload Simulator?

- **Regression Testing**
 - Verify correct application function after a change
 - **“Does it *still* work right?”**
- **Performance Testing**
 - **“How well can I make it perform?”**
- **Load or Capacity Testing**
 - Predict the impact of additional workload
 - **“What will happen with more users on the system?”**
- **Stress Testing**
 - Predict the impact of extremely high transaction rates
 - **“What will break first?”**

TESTING

Workload Simulator for z/OS

- Stress, Regression (functional) and Load testing of interactive z/OS applications

“ + ”

Rational Functional Tester Extension for Terminal Apps

- Workstation-based functional and regression testing of interactive z/OS applications
- WAS Z
 - Rational Performance Tester for z/OS
 - Stress and Load testing of a web-based applications
 - WSWS taken out of marketing RPT is product of choice

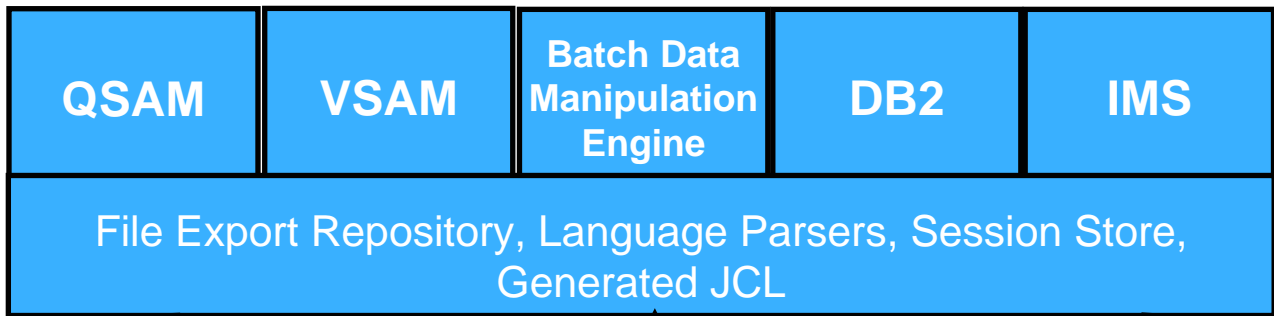
IBM File Export

File Export for z/OS

- File Export for z/OS offers highly selective data copying capabilities to simplify the complex problems of populating test environments, or migrating applications to new or additional environments.
 - **Copies all data in a related set of objects or a slice of data across a related set of objects**
 - **Supports application-defined relationships**
 - **Provides for one-to-one, one-to-many and many-to-one data creation**
 - **Includes highly flexible data selection and transformation rules**
 - **Supports DB2, IMS, and MVS data in one product**



File Export Utility - Flexible solution for exporting and importing related sets of enterprise data



Extract related data from multiple sources

Reformat data, scramble sensitive data, create Nth selections of data, and exploit application defined data relationships

How Test Data Generation is Performed Today

- **QA Managers and non-programmers**
 - Need ability to easily create test data and extracts from data stores “on demand”
- **Developers**
 - Write custom programs to extract data from production data stores
 - Write throw-away programs, and use utilities not designed for the purpose
- **Expensive to keep up-to-date**
 - Needs change over time
 - Custom programs need to be modified and debugged

Why File Export for z/OS ?

- **Tool designed specifically for:**
 - Quick generation of referential sets of test data from production data
 - Easy migration of data from one format to another to support application enhancements

- **Improved test data generation productivity**

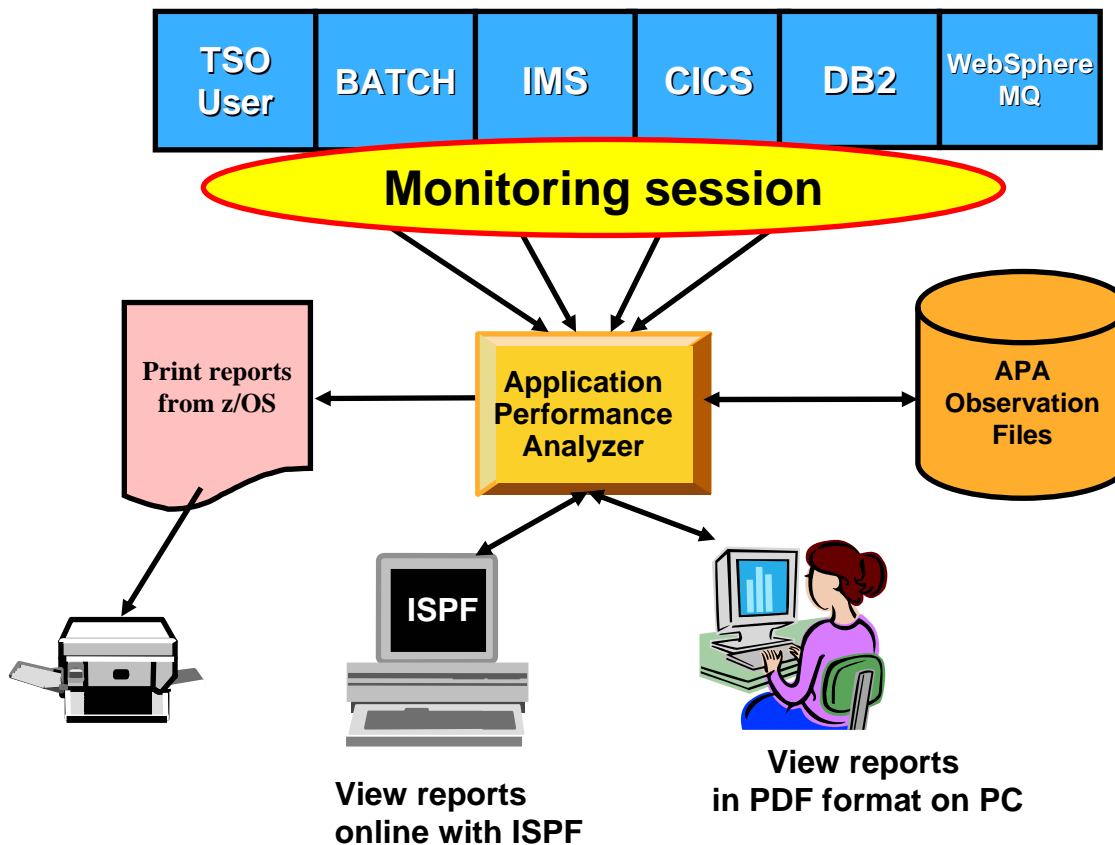
File Export Utility Features

- **Flexible solution for exporting and importing related sets of enterprise data**
- **Provides for one-to-one, one-to-many and many-to-one data creation**
- **Copies all data in a related set of objects or a slice of data across a related set of objects**
- **Supports application defined relationships**
- **Includes highly flexible data selection and transformation rules**
- **Gives the user the option to protect sensitive data on a field by field basis**
- **Supports altering data content while copying**
- **Includes a repository in which common persistent information about your data is stored**
- **Offers highly selective data copying capabilities that simplify the complex task of populating test environments, or migrating applications to new or additional environments**

IBM Application Performance Analyzer

Application Performance Analyzer Functional Overview

Application performance analysis tooling for application developers



Features:

- Summary/Profile Reports with drill down into detailed levels via an ISPF interface or PDF hardcopy
- CPU, Load Module, and CSECT Analysis of all modules in the address space
- Source Statement (COBOL or PL1) or Instruction utilization in each CSECT
- Supports Fault Analyzer / Debug Tool Sidefiles
- Wait Time Analysis by Category, Task/Module, or Attribution
- DASD I/O Analysis by Device, DD Name, Dataset and Dataset Attributes, EXCP's, VSAM with Buffer Pool, I/O Wait, Over Time
- Sysplex Coupling Facility Reports
- DB2 SQL Analysis – Static and Dynamic – Service Times
- DB2 Analysis by DBRM, Statement, and Plan
- CICS Session Statistics, Transaction Analysis by CPU Usage, Mean and Total Service Time, and Waits by Transaction
- IMS CPU and Service Time Analysis
- MQ Series Analysis by Queue, Request, and Transaction
- Interval Reporting
- Adjustable Sampling Rate
- Repeated Observation Sessions
- Internal (APA) and External (RACF, etc) Security

What is Application Performance Analyzer ?

- A performance analyzer for application programs
 - **A tool that shows resources used by an application**
 - **so you can identify the cause of performance problems**
- Delivers information about an application, to help answer:
 - **What programs are running?**
 - **What percentage of time is spent in each program?**
 - **Which lines of code are using the most time?**
 - **What files and databases are being used?**
 - **Why is the application waiting?**

Application Performance Analyzer

- **Get information about application performance:**
 - Interactively monitor a running application
 - Schedule monitoring for an application that will run later
- **Support for application running in:**
 - Batch jobs
 - CICS transactions
 - IMS transactions
 - TSO

S01: Measurement Profile - Suggested Start for Navigation

File View Navigate Help

R01: AP-Analyzer Performance Reports (0018)

Row 00001 of 00007

Command ==>

Scroll ==> CSR

Select a category from the list to the right to view the available reports in the selection list below.

_ A Admin/Miscellaneous	_ I IMS Measurement
_ S Statistics/Storage	_ E CICS Measurement
_ C CPU Usage Analysis	_ F DB2 Measurement
_ D DASD I/O Analysis	_ Q MQ Measurement
_ W CPU WAIT Analysis	_ G Coupling Facility

Enter S to make a selection or enter the report code on the command line

S S01 Measurement Profile	_ S07 TCB Execution Summary
S S02 Load Module Attributes	_ S08 Processor Utilization Summary
_ S03 Load Module Summary	
_ S04 TCB Summary	
_ S05 Memory Usage Timeline	
_ S06 Data Space Usage Timeline	

Mâ a

A



Enter P to view program source

File View Navigate Help			
C01: CPU Usage by Category (0018)		Row 00001 of 00005	
Command ==>		Scroll ==> CSR	
Name	Description	Percent of CPU Time * 10.00%	±1.8%
		*.....1.....2.....3.....4.....5.....6.....7.....8	
SYSTEM	System/OS Services	91.06	
APPLCN	Application Code	8.93	
+ VSAMWRTE	Application Program	8.93	
+ PSAMWRTE	CSECT in VSAMWRTE	8.76	
+ CEELOCT	LE Runtime Module	0.17	

Mâ a

A



P01: Source Program Attribution

File View Navigate Help

P01: Source Program Attribution (0018)

Row 00018 of 00047

Command ==>

Scroll ==> CSR

LineNo	Offset	Count	Source Statement
000049	0006D6	17	PERFORM CAL-PARA UNTIL TIME-INTERVAL > TIME-DURA
000050	000710		STOP RUN.
000051			
000052			CAL-PARA.
000053	000730	21	PERFORM STOP-PARA.
000054			
000055			START-PARA.
000056	00074E		ACCEPT TIME-START FROM TIME.
000057			
000058			STOP-PARA.
000059	00078E	47	ACCEPT TIME-STOP FROM TIME.
		2546	<- CPU time attributed to above statement
000060	0007C8	129	COMPUTE TIME-INTERVAL = TIME-START - TIME-STOP.
000061			
000062			INITIALIZE-PARA.
000063			
000064			
000065			TO TABLE-VALUES(1).
000066			TO TABLE-VALUES(2).

The Pink highlighted line indicates a System Module and is termed as

Referred Attribution

PF3

CICS Measurement "E" Reports

```

File  View  Navigate  Help
-----
R01: AP-Analyzer Performance Reports (0104)                               Row 00001 of 00007
Command ==> _____ Scroll ==> CSR_

Select a category from the list to the right to view the available
reports in the selection list below.
_ A Admin/Miscellaneous
_ S Statistics/Storage
_ C CPU Usage Analysis
_ D DASD I/O Analysis
_ W CPU WAIT Analysis
_ I IMS Measurement
_ E CICS Measurement
_ F DB2 Measurement
_ Q MQ Measurement
_ G Coupling Facility

Enter S to make a selection or enter the report code on the command line

S E01 CICS Session Statistics
█ E03 CICS CPU Usage by Txn
_ E04 CICS Mean Service Time by Txn
_ E05 CICS Total Service Time by Txn
_ E06 CICS Service Time by Task Id
_ E07 CICS Wait by Txn

Mâ a                                     A                                     16/004

```

E03: CICS CPU Usage by Transaction - Services

File		View		Navigate		Help	
E03: CICS CPU Usage by Transaction (0104)							Row 00001 of 00018
Command ==>							Scroll ==> CSR
Name	NTxns/Description	Percent of CPU Time * 10.00%		±7.4%			
		*.....1.....2.....3.....4.....5.....6.....7					
SSP1	28	38.04					
→ DFHD2EX1	CICS Program	10.86					
→ SSTEESTP1	CICS Program	8.15					
→ LGIPOL01	EXEC SQL	7.60					
→ CICS	System Services	4.34					
→ SSTEESTP1	EXEC CICS	3.26					
→ +0892	RECEIVE MAP(SSMAPP1)	1.53					
→ +0EE4	SEND MAP(SSMAPP1)	1.08					
→ +0908	LINK PROGRAM(LGIPOL01)	0.54					
→ LGIPOL01	EXEC CICS	1.08					
→ LGIPOL01	CICS Program	1.08					
→ EQADCXXT	EXEC CICS	1.08					
→ EQADCXXR	EXEC CICS	0.54					
SSC1	22	37.50					
MQPT	1	4.34					
FBI1	1	2.17					



DB2 Measurement "F" Reports

File View Navigate Help

R01: AP-Analyzer Performance Reports (0087)

Row 00001 of 00008

Command ==>

Scroll ==> CSR

Select a category from the list to the right to view the available reports in the selection list below.

_ A Admin/Miscellaneous
 _ S Statistics/Storage
 _ C CPU Usage Analysis
 _ D DASD I/O Analysis
 _ W CPU WAIT Analysis

_ I IMS Measurement
 _ E CICS Measurement
 _ F **DB2 Measurement**
 _ Q MQ Measurement
 _ G Coupling Facility

Enter S to make a selection or enter the report code on the command line

S	F01	DB2	Measurement Profile	_	F08	DB2	SQL Wait Time by Statement
█	F02	DB2	SQL Activity Timeline	_	F09	DB2	SQL Wait Time by Plan
_	F03	DB2	SQL Activity by DBRM	_	F10	DB2	SQL CPU/Svc Time by DBRM
_	F04	DB2	SQL Activity by Statement	_	F11	DB2	SQL CPU/Svc Time by Stmt
_	F05	DB2	SQL Activity by Plan	_	F12	DB2	SQL CPU/Svc Time by Plan
_	F06	DB2	SQL Statement Attributes	_	F13	DB2	SQL Threads Analysis
_	F07	DB2	SQL Wait Time by DBRM	_	F14	DB2	CPU by Plan/Stored Proc

Reports organized by DBRM, Statement, and Plan

F02 – F04 SQL Activity

F07 – F09 Wait Time

F10 – F2 CPU/SVC Time

MA a

16/004

F01: DB2 Measurement Profile - Summary

File View Navigate Help

F01: DB2 Measurement Profile (0087)

Row 00001 of 00058

Command ==>

Scroll ==> CSR

Most Active DB2 Plans

Samples																			
7,230		100.0%	'	'	'	'	'	'	'	'	'	'	'	'	'	'	'	'	'
DB2JOB3	2,087	28.8%	█																

Reports:

[F07](#)

Most Active Package/DBRMs

Samples																			
7,230		100.0%	'	'	'	'	'	'	'	'	'	'	'	'	'	'	'	'	'
DB2JOB3	2,087	28.8%	█																

Reports:

[F03](#)

Most Active SQL Statements

Samples																				
7,230		100.0%	'	'	'	'	'	'	'	'	'	'	'	'	'	'	'	'	'	
DB2JOB3:00331	FETCH	875	12.1%	█																
DB2JOB3:00377	INSERT	613	8.4%	█																
DB2JOB3:00467	FETCH	344	4.7%	█																
DB2JOB3:00219	EXECUTE	113	1.5%	█																
DB2JOB3:00260	FETCH	106	1.4%	█																

Reports:

[F04](#)

MA

a

A

Shows Most Active DB2 Plans, DBRM/Packages, and Statements



Application Performance Analyzer Report Summary

CICS

Session Statistics
CPU Usage by Txn
Mean Service Time by Txn
Total Service Time by Txn
Service Time by Task Id
Wait Time by Txn

Storage & Statistics

Measurement Profile
Load Module Attributes
Load Module Summary
TCB Summary
Memory Usage Timeline
Data Space Usage Timeline
TCB Execution Summary
Processor Utilization Summary

DB2

Measurement Profile
SQL Wait Time by Statement
SQL Activity Timeline
SQL Wait Time by Plan
SQL Activity by DBRM
SQL CPU/Svc Time by DBRM
SQL Activity by Statement
SQL CPU/Svc Time by Stmt
SQL Activity by Plan
SQL CPU/Svc Time by Plan
SQL Statement Attributes
SQL Threads Analysis
SQL Wait Time by DBRM
CPU by Plan/Stored Proc

Wait

Time by Task/Category
Time by Task/Module
Time Referred Attribution

CPU

Usage by Category
Usage by Procedure
Usage by Module
Referred Attribution
Usage by Code Slice
Usage Timeline
Usage Task/Category
Usage Task/Module

WebSphere MQ

Activity Summary
Serv Time by Txn
CPU Usage by Queue
Wait Time by Queue
CPU Usage by Request
Wait Time by Reque
CPU Usage by Txn
Wait Time by Txn
Serv Time by Queue
Serv Time by Request

DASD

Usage by Device
Activity Timeline
Usage by DDNAME
I/O Wait Time
Usage by Dataset
VSAM Buffer Pool Usag
Dataset Attributes
Summary
D06 DASD VSAM Statistics

IMS

DL/I Call CPU Time
DL/I Call Service Time

Coupling Facility

Summary
Mean Times
Facility Total Times

IBM Application Performance Analyzer Summary

■ Non-intrusive Performance Analyzer for Applications and Systems Programs to

- Improve response time in online applications
- Improve batch turn around time
- Identify excessive I/O activity
- Identify excessive CPU usage
- Test the effects of increasing workload
- Isolate performance problems in new and existing applications

■ Types of Observation Sessions

- Real-Time
- Scheduled
- Via Batch Submission

■ Environments Supported

- CICS, DB2, IMS, JES/Batch, Sysplex, WebSphere MQ

■ Application Performance Analyzer Features:

- Summary/Profile Repots with drill down into detailed levels via an ISPF interface or PDF hardcopy
- CPU, Load Module, and CSECT Analysis of all modules in the address space
- Source Statement (COBOL or PL1) or Instruction utilization in each CSECT
- Supports Fault Analyzer / Debug Tool Sidefiles
- Wait Time Analysis by Category, Task/Module, or Attribution
- DASD I/O Analysis by Device, DD Name, Dataset and Dataset Attributes, EXCP's, VSAM with Buffer Pool, I/O Wait, Over Time
- Sysplex Coupling Facility Reports
- DB2 SQL Analysis – Static and Dynamic – Service Times
- DB2 Analysis by DBRM, Statement, and Plan
- CICS Session Statistics, Transaction Analysis by CPU Usage, Mean and Total Service Time, and Waits by Transaction
- IMS CPU and Service Time Analysis
- WebSphere MQ Analysis by Queue, Request, and Transaction
- Adjustable Sampling Rate
- Repeated Observation Sessions

■ Information Available At:

www.ibm.com/software/awdtools/deployment

IBM Application Time Facility

Application Time Facility – *Easy for programmers to specify the jobs to receive simulated dates*



**IDMS
IDEAL
Natural**



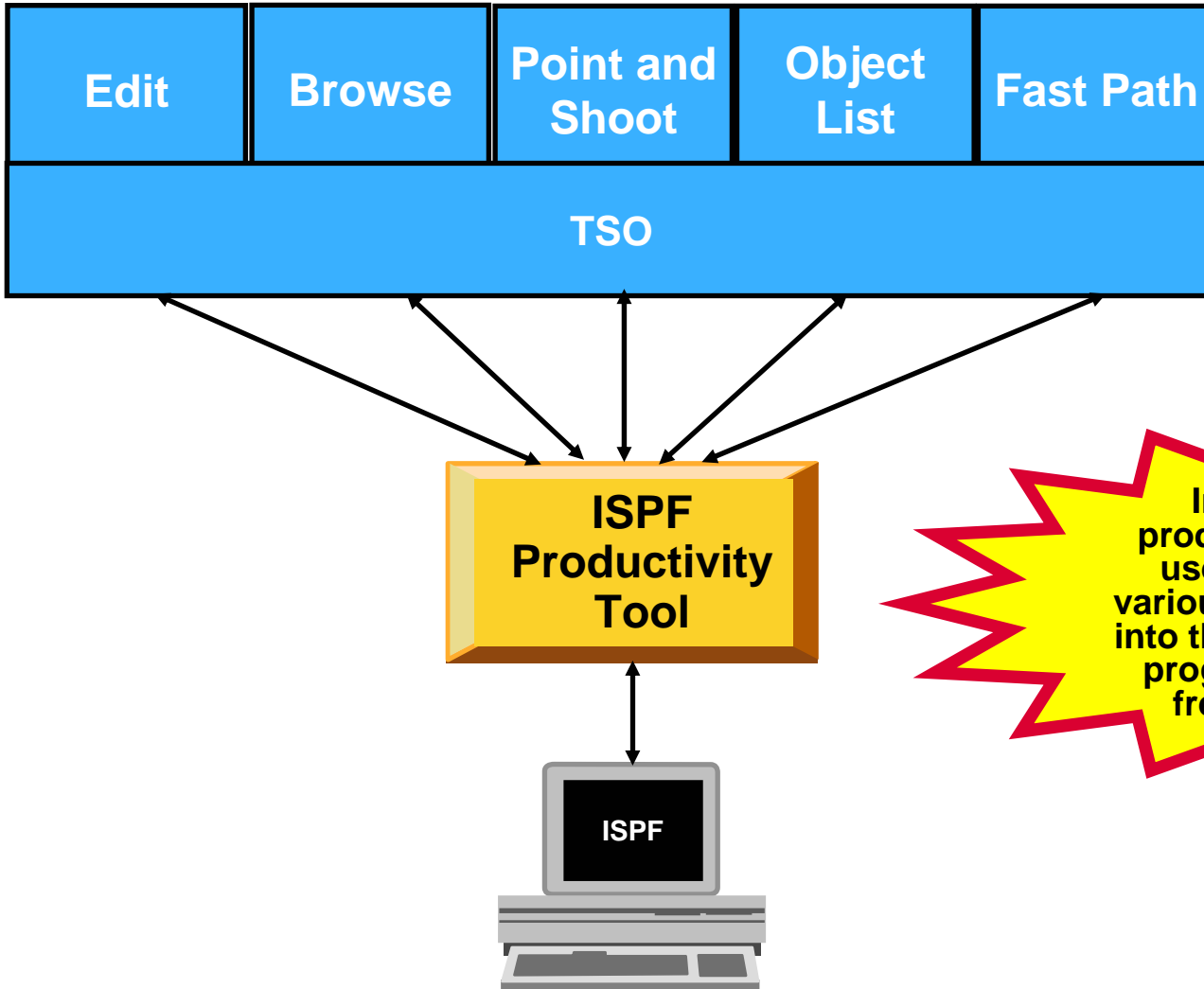
Helps software development teams ensure their software performs as intended

Application Time Facility Features

- **Shifts time zones for on-line regions so users will see their local time or, so dated application file updates will have the local time**
- **Restarts a failing job at the date/time it failed, ensuring that file update and reports are not affected**
- **Allows jobs that, due to unavoidable circumstances, run over a deadline to finish "on time"**
- **Handles all clock formats including decimal, binary, timer units, microseconds and TOD clock format**
- **On-line ISPF interface makes it easy for programmers to specify the jobs to receive simulated dates on an individual basis, or as generic groups by using a wild card**
- **Allows testing of applications that are reliant upon timing, time zones, or time and date formatting without changing z/Series system date / time settings**

IBM ISPF Productivity Tool

ISPF Productivity Tool – *Enhances TSO ISPF productivity*



Increases the productivity of ISPF users by packing various ISPF functions into the areas in which programmers most frequently work

ISPF Productivity Tool Features

- **Consolidates commands within a single panel**
- **Presents a comprehensive, object-oriented, project-related list of data sets**
- **Provides extensive point & shoot capabilities**
- **Extended TSO command execution**
- **Automatic PDS compression**
- **Reduces keystrokes and EXCP counts**
- **Enhanced print and clipboard capabilities**
- **Improves ISPF navigation**
- **SCLM, Librarian, Panvalet Library support**
- **IPT increases the productivity of ISPF users by packing various ISPF functions into the areas in which programmers most frequently work, such as browse, edit ,member lists, and dataset lists.**
- **New commands and functions reduce the need to navigate to additional panels to perform utility functions. This results in reduced keystrokes and increase productivity.**

Get more information about these tools at:

www.ibm.com/software/awdtools/deployment

Software > Software Development >

z/OS Problem Determination and Deployment Tools

z/OS® Problem Determination and Deployment Tools have powerful functions and features. Organizations that choose to use them improve the health of their application portfolios.

Select a Product

Products	Solutions
<ul style="list-style-type: none"> • Application Monitor for z/OS A non-intrusive performance analyzer for applications and systems programs that provides resource utilization information for your applications. This resource information can be the current system data (online analysis) or data collected over a certain time period (historical analysis). • Debug Tool for z/OS A program testing and analysis aid that helps you examine, monitor, and control the execution of programs written in C/C++, COBOL, or PL/I on OS/390, MVS™, VM, or VSE™, and compiled Java™ with the 	<ul style="list-style-type: none"> • Problem Determination and Deployment Tools Information Center This information center provides fast, online centralized access to Problem Determination and Deployment Tools product information. • IBM COBOL family IBM COBOL provides a complete offering of compatible, cross-platform, cross-product compilers that support z/OS, OS/390®, VM, VSE/ESA®, AS/400®, AIX®, and Microsoft® Windows NT®. IBM gives you the tools you need to amplify your program development and leverage your existing applications, enabling you

Highlights

- File Manager: Latest PTF information
- Fault Analyzer: Latest PTF information
- Debug Tool: Latest PTF information
- WebSphere and zSeries AD tools help meet on demand

z/OS Problem Determination and Deployment Tools

Library

News

How to buy

Training and certification

Services

Support

Related software

- Application Monitor for z/OS
- DebugTool for z/OS
- Fault Analyzer for z/OS
- File Export for /OS
- File Manager for z/OS
- Workload Simulator for z/OS and OS/390

Related hardware

- zSeries servers
- Warranty info

For more information

- z/OS Problem Determination and Deployment Tools
 - www.ibm.com/software/awdtools/deployment
 - www.ibm.com/software/awdtools/faultanalyzer
 - www.ibm.com/software/awdtools/filemanager
 - www.ibm.com/software/awdtools/debugtool
 - www.ibm.com/software/awdtools/apa
 - www.ibm.com/software/awdtools/migration
 - www.ibm.com/software/awdtools/tictoc/
 - www.ibm.com/software/awdtools/ispfproductivitytool
 - www.ibm.com/software/awdtools/fileexport
 - [zSeries Application Development Tools information center](#)
 - [Introduction to the IBM Application Development Tools on z/OS Redbook](#)

IBM PD Tools Product Identification

- **Fault Analyzer for z/OS (5655-P16)**
- **File Manager for z/OS (5655-P17)**
- **Debug Tool Utilities and Advanced Functions for z/OS (5655-P15)**
- **Application Performance Analyzer for z/OS (5697-N37)**
- **Workload Simulator for z/OS & OS/390 (5655-I39)**
- **Migration Utility (5697-I89)**
- **Application Time Facility (5697-N42)**
- **ISPF Productivity Tool (5698-A81)**
- **File Export Utility (5697-I12)**

PIDS / Part #s for z Rational

CURRENT AD TOOLS Feb 1, 2006

Rational Z Tools					
Wwide Prod Code Dscr	PID	Rev Stream	Part Dscr Long	non-zSeries Part Num	zSeries Part Num
Ratl Functional Tester	5724G25	License + Maint	RATL FUNCTIONAL TESTER AUTHORIZED USER LIC+SW MAINT 12 MO	D53NFL	D54BSLL
Ratl Functional Tester		Maint Reinstatement	RATL FUNCTIONAL TESTER AUTHORIZED USER SW MAINT REINSTATE 12 MO	D53NGLL	D54BTLL
Ratl Functional Tester		Maint Renewal	RATL FUNCTIONAL TESTER AUTHORIZED USER ANNUAL SW MAINT RNWL	E0197LL	E0114LL
Ratl Functional Tester	5724G25	License + Maint	RATL FUNCTIONAL TESTER FLOATINGUSER LIC+SW MAINT 12 MO	D530BLL	D54BULL
Ratl Functional Tester		Maint Reinstatement	RATL FUNCTIONAL TESTER FLOATINGUSER SW MAINT REINSTATE 12 MO	D530CLL	D54BVLL
Ratl Functional Tester		Maint Renewal	RATL FUNCTIONAL TESTER FLOATINGUSER ANNUAL SW MAINT RNWL	E012DLL	E0115LL
Ratl Functional Tester Extension	5724J07	License + Maint	RATL FUNCT TEST EXT TERMINAL BASED APS ATHUSR LIC+SW MAINT 12 MO	D53ZXLL	D53ZTLL
Ratl Functional Tester Extension		Maint Reinstatement	RATL FUNCT TEST EXT TERMINAL BASED APS ATHUSR SW MAINT REINSTATE 12 MO	D53ZYLL	D53ZULL
Ratl Functional Tester Extension		Maint Renewal	RATL FUNCT TEST EXT TERMINAL BASED APS ATHUSR ANNUAL SW MAINT RNWL	E01CDLL	E01CBLL
Ratl Functional Tester Extension	5724J07	License + Maint	RATL FUNCT TEST EXT TERMINAL BASED APS FLTUSR LIC+SW MAINT 12 MO	D53ZVLL	D53ZZLL
Ratl Functional Tester Extension		Maint Reinstatement	RATL FUNCT TEST EXT TERMINAL BASED APS FLTUSR SW MAINT REINSTATE 12 MO	D53ZWLL	E01CELL
Ratl Functional Tester Extension		Maint Renewal	RATL FUNCT TEST EXT TERMINAL BASED APS FLTUSR ANNUAL SW MAINT RNWL	E01CCLL	D5400LL
Ratl Performance Tester	5724J96	License + Maint	RATL PERFORMANCE TESTER AUTHORIZED USER LIC+SW MAINT 12 MO	D54LRLL	NA
Ratl Performance Tester		Maint Reinstatement	RATL PERFORMANCE TESTER AUTHORIZED USER SW MAINT REINSTATE 12 MO	D54LSLL	NA
Ratl Performance Tester		Maint Renewal	RATL PERFORMANCE TESTER AUTHORIZED USER ANNUAL SW MAINT RNWL	E01M9LL	NA
Ratl Performance Tester	5724J96	License + Maint	RATL PERFORMANCE TESTER FLOATING USER LIC+SW MAINT 12 MO	D54LTLL	NA
Ratl Performance Tester		Maint Reinstatement	RATL PERFORMANCE TESTER FLOATING USER SW MAINT REINSTATE 12 MO	D54LULL	NA
Ratl Performance Tester		Maint Renewal	RATL PERFORMANCE TESTER FLOATING USER ANNUAL SW MAINT RNWL	E01MALL	NA
Ratl Performance Tester for z/OS	5724J96	License + Maint	RATL PERFORMANCE TESTER FOR Z/OS PER VALUE UNIT LIC+SW MAINT 12 MO	NA	D556ULL
Ratl Performance Tester for z/OS		Maint Reinstatement	RATL PERFORMANCE TESTER FOR Z/OS PER VALUE UNIT SW MAINT REINSTATE 12 MO	NA	D556VLL
Ratl Performance Tester for z/OS		Maint Renewal	RATL PERFORMANCE TESTER FOR Z/OS PER VALUE UNIT ANNUAL SW MAINT RNWL	NA	E01UCLL