



IBM Software Group

Identifying and Deploying your assets for SOA

Cornell Keene
IBM System z CICS Tools Enablement
ckeene@us.ibm.com



ON DEMAND BUSINESS™

Trademarks

- The following are trademarks of the International Business Machines Corporation in the United States and/or other countries. For a complete list of IBM Trademarks, see www.ibm.com/legal/copytrade.shtml
 - ▶ AS/400, CICS, DB2, Domino, E-business logo, ESCON, eServer, FICON, IBM, IBM Logo, IMS, iSeries, Lotus, MVS, Notes, OS/390, pSeries, Rational, RS/6000, S/390, Tivoli, VM/ESA, VSE/ESA, WebSphere, xSeries, z/OS, zSeries, z/VM, System z, System z9
- The following are trademarks or registered trademarks of other companies
 - ▶ Linux is a registered trademark of Linus Torvalds
 - ▶ Java and all Java-related trademarks and logos are trademarks of Sun Microsystems, Inc., in the United States and other countries
 - ▶ UNIX is a registered trademark of The Open Group in the United States and other countries.
 - ▶ Microsoft, Windows and Windows NT are registered trademarks of Microsoft Corporation.
 - ▶ SET and Secure Electronic Transaction are trademarks owned by SET Secure Electronic Transaction LLC.
 - ▶ Intel is a registered trademark of Intel Corporation
 - ▶ * All other products may be trademarks or registered trademarks of their respective companies.
- **Notes:**
 - Performance is in Internal Throughput Rate (ITR) ratio based on measurements and projections using standard IBM benchmarks in a controlled environment. The actual throughput that any user will experience will vary depending upon considerations such as the amount of multiprogramming in the user's job stream, the I/O configuration, the storage configuration, and the workload processed. Therefore, no assurance can be given that an individual user will achieve throughput improvements equivalent to the performance ratios stated here.
 - IBM hardware products are manufactured from new parts, or new and serviceable used parts. Regardless, our warranty terms apply.
 - All customer examples cited or described in this presentation are presented as illustrations of the manner in which some customers have used IBM products and the results they may have achieved. Actual environmental costs and performance characteristics will vary depending on individual customer configurations and conditions.
 - This publication was produced in the United States. IBM may not offer the products, services or features discussed in this document in other countries, and the information may be subject to change without notice. Consult your local IBM business contact for information on the product or services available in your area.
 - All statements regarding IBM's future direction and intent are subject to change or withdrawal without notice, and represent goals and objectives only.



Introducing the IBM SOA Foundation

Provides What You Need to Get Started with SOA

IBM SOA Foundation: Integrated, open set of software, best practice, and patterns

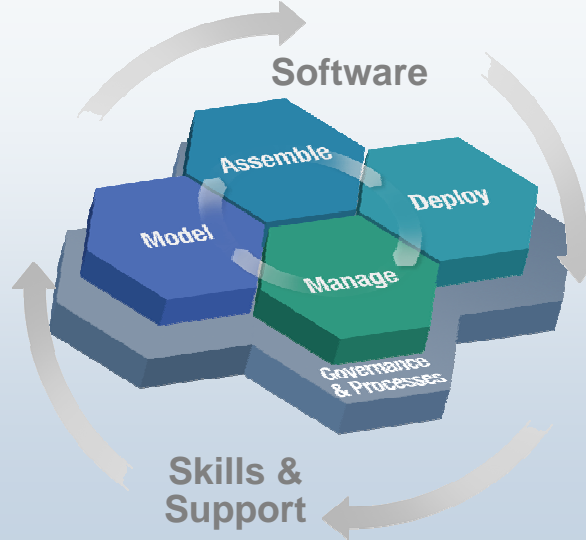
Supports complete lifecycle with a **modular** approach

Extends value of your existing investments, regardless of vendor

Scalable; start small and grow as fast as the business requires

Extensive business and IT standards support; facilitating greater **interoperability & portability**

IBM SOA Foundation



Leveraging existing IT Infrastructure



CICS™



IMS™

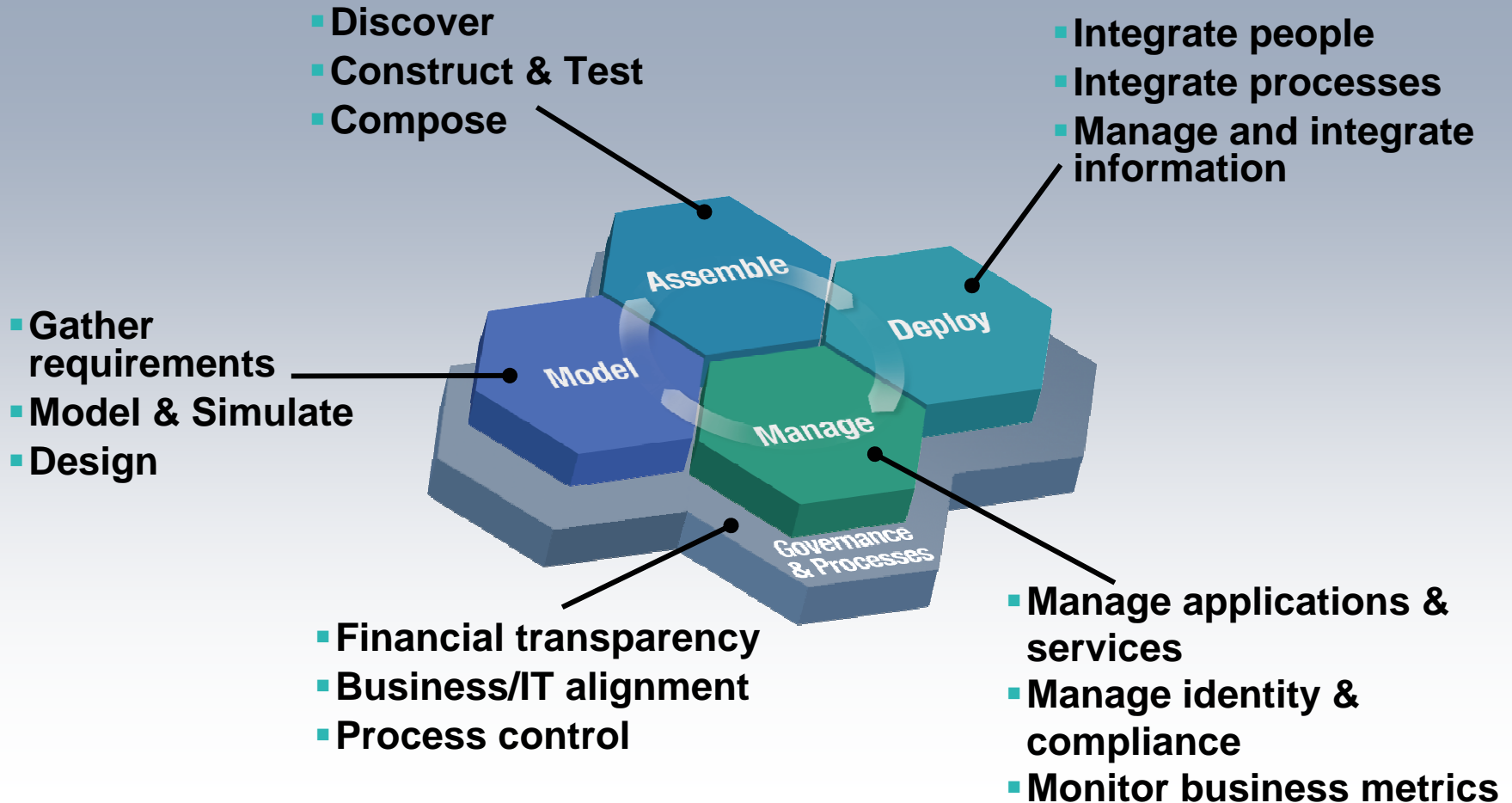


Custom Apps.



How are customers thinking technically about flexible IT through SOA?

The SOA Lifecycle



SOA Foundation

Part of a broader portfolio to meet your every need

The diagram illustrates the SOA Foundation as a multi-layered structure. At the base is a grey layer labeled "Governance & Processes". Above this are four colored hexagonal blocks: "Model" (blue), "Assemble" (teal), "Deploy" (teal), and "Manage" (green). Arrows indicate a flow from Model to Assemble, Assemble to Deploy, and Deploy to Manage. Lines connect these components to their respective software products listed on the left and right.

WebSphere Integration Developer™*
Rational Application Developer™*

Z Note: WDz could be used in place of RAD

WebSphere Business Modeler™*
CICS Interdependency Analyzer™*

WebSphere Business Monitor™*
Tivoli Composite Application Manager™*
Tivoli Identity & Access Manager™

Process:
WebSphere Process Server™*
WebSphere ESB™* &
WebSphere Message Broker™*

People:
WebSphere Portal™*
WebSphere Everyplace Deployment™*
Workplace Collaboration Services™*

Information:
CICS Business Event Publisher™*

Application Infrastructure:
CICS Transaction Server™
IMS™
DB2™
WebSphere Application Server™ &
WebSphere Extended Deployment™*

*** New or Enhanced**



Transform your CICS applications

**Extend and modernize
CICS applications
efficiently**

**Improve programmer
productivity**

**Increase customer
satisfaction**

Enable IT for SOA

CICS Application Modernization Tools

CICS Business Event Publisher for MQSeries®

- Create and manage outbound events using WebSphere MQ without changing existing CICS applications

CICS Interdependency Analyzer

- *Understand your active application inventory for efficient maintenance and upgrades*



Today's Business Challenges

- **Unconnected infrastructure investments**
 - ▶ Provide seamless integration with new business units
 - ▶ Link packaged applications with legacy systems
- **Accelerated costs of managing disparate systems**
 - ▶ Integrate across heterogeneous islands of automation
 - ▶ Mitigate people and skill shortages
- **Increased industry and government regulations**
 - ▶ Such as Sarbanes-Oxley
- **Reaching new markets with critical speed**
 - ▶ Support new standards like process automation
 - ▶ Maintain system and asset security

IT projects can take too long and cost too much
Achieving 'Time to Value' is critical to business success

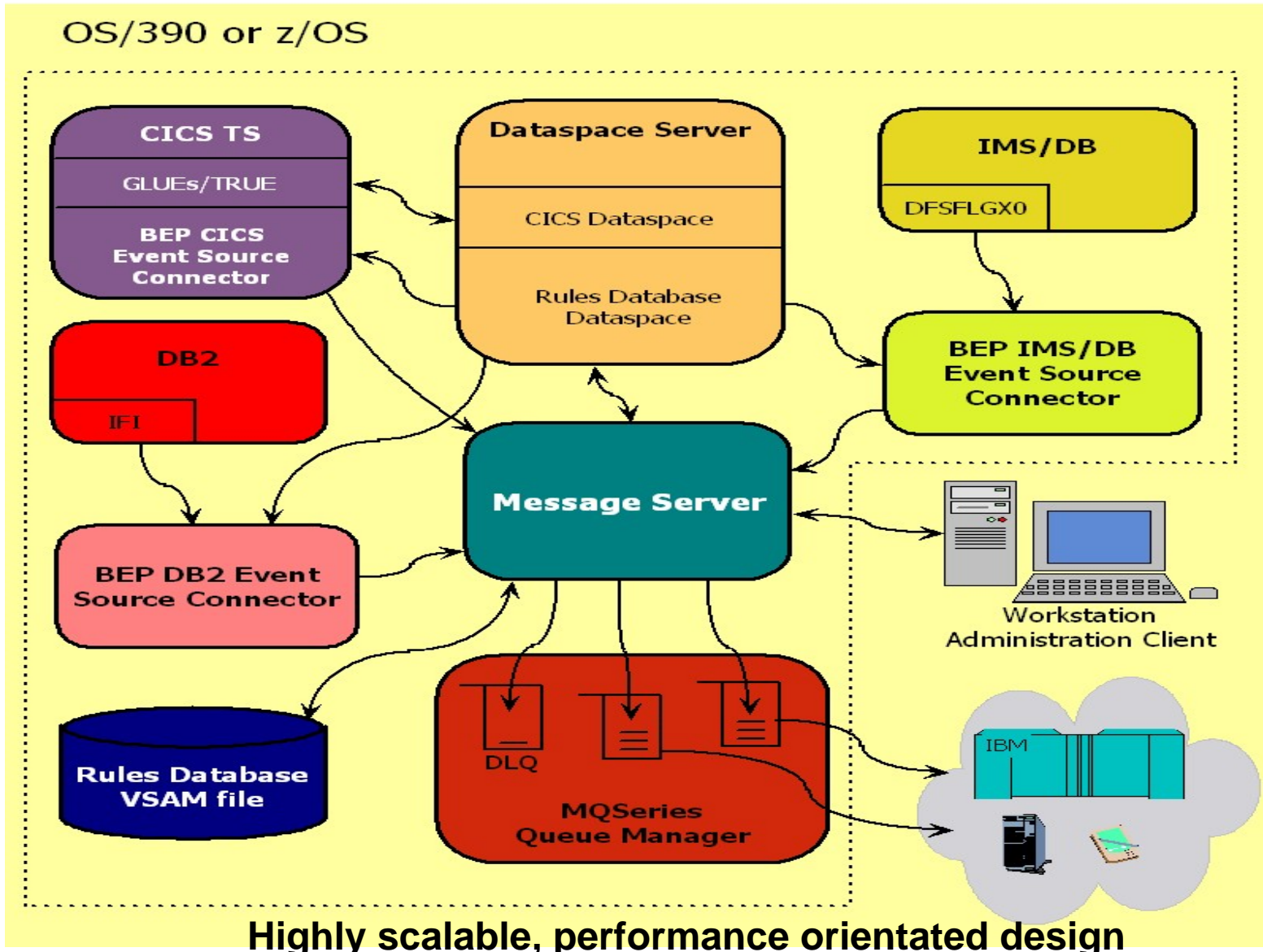


What is CICS Business Event Publisher for MQSeries?

- CICS Business Event Publisher for MQSeries (CICS BEP)
 - ▶ Creates MQPUT messages for MQSeries queue from events and associated information
 - ▶ Based on user-specified message content rules, Queue names and MQPUT options
 - ▶ Provides easy to use workstation GUI for selection and rules creation
- Helps integrate legacy applications and data to new environments (CICS, IMS and DB2 events)
 - ▶ Real time action and results
 - ▶ Offers low cost, low risk integration strategy
- Current version - CICS Business Event Publisher for MQSeries V1.2
 - ▶ GA May 2004



CICS BEP V1.2 Architecture



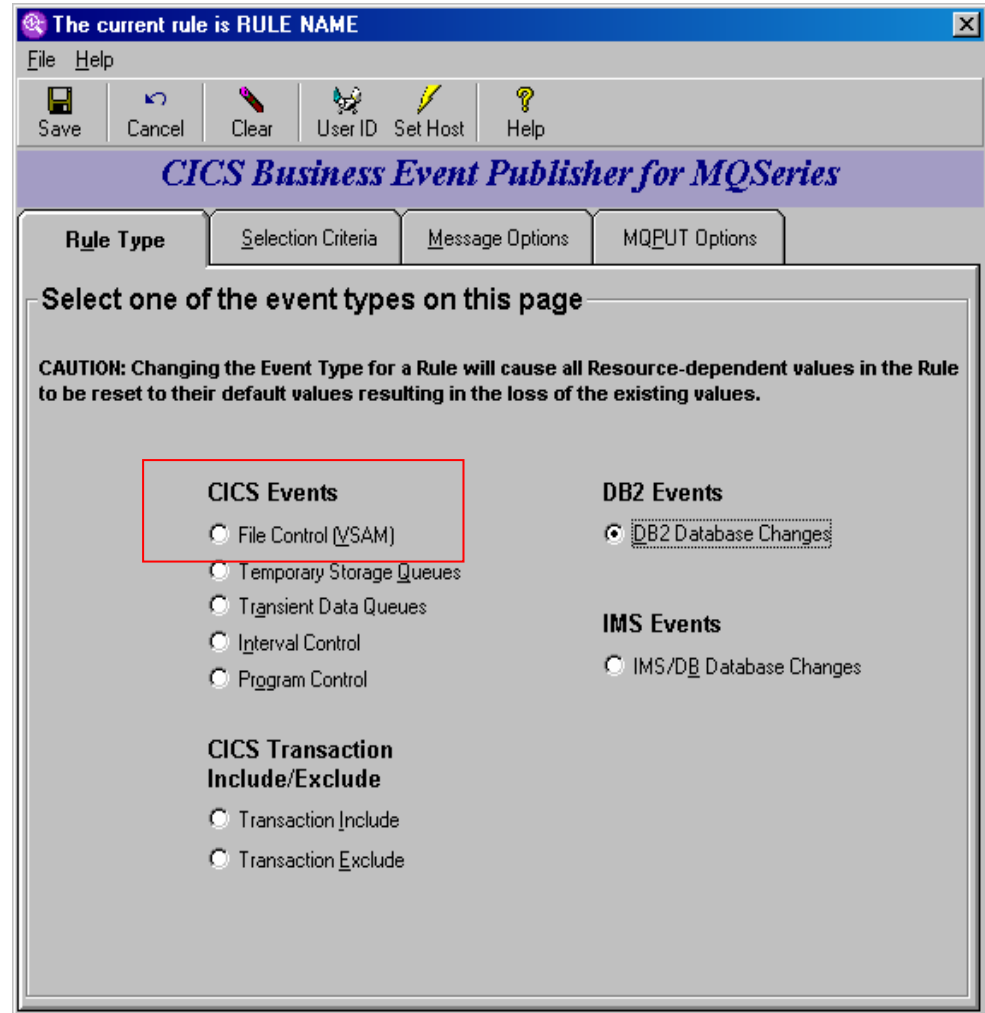
Highly scalable, performance orientated design



CICS BEP Workstation Client

Rule Type Tab

- CICS, DB2 and IMS categories



CICS BEP Workstation Client

Selection Criteria Tab

- For CICS events

The current rule is NEW ORDER

File Help

Save Cancel Clear UserID Set Host Help

CICS Business Event Publisher for MQSeries™

Rule Type Selection Criteria MQPUT Options Message Options Return Options

File Name ORDRFILE

Enter Selection Criteria

Selection Criteria Enabled

All fields below are case sensitive

Select by Transaction ID

Include

Exclude

Select by User ID

Include

Exclude

Select by Terminal ID

Include

Exclude

Select by APPLID

Include

Exclude

Advanced Selection Criteria

Intercept These Request Types

WRITE

REWRITE

READ

READ With Update

STARTBR

RESETBR

READNEXT

READNEXT With Update

READPREV

READPREV With Update

ENDBR

DELETE

UNLOCK



Advanced Selection Criteria for NEW ORDER

Resource Name: ResourceType:

Current Selection Criteria

And/Or	Field Name/Type	Index	Offset	Length	OP	Compare to

Move Up Remove and Edit Message Field
Move Down Remove from List

Datamap Fields

Level	Field name	Occu...	Type	Picture	Usage	Length
03	ORDER-DATE-SEC		Numeric: zoned	9(2)	Display	2
02	ORDER-ITEMS	10	Group		Display	54
03	ITEM-NUMBER	10	Numeric: zoned	9(8)	Display	8
03	ITEM-QUANTITY	10	Numeric: binary	S9(4)	Binary (CO...	2
03	ITEM-ON-HAND	10	Numeric: binary	S9(8)	Binary (CO...	4
03	ITEM PRICE	10	Numeric: zoned	9(8)	Display	8

Datamap Name:

Download Datamap
Remove Datamap from Criteria List

AND Field Name Length Index Operator Compare to Data Type Compare to

OR

Add to Criteria

Fields by Offset/Length

AND Offset Length Operator Compare to Data Type Compare to

OR

Add to Criteria

Create a message on these conditions: Conditions Selected:

NORMAL
 ERROR
 CHANGED

Action:

Enable Complex Selection Criteria

OK
Cancel



Advanced Selection Criteria for NEW ORDER
✕

Resource Name **ResourceType**

Current Selection Criteria

And/Or	Field Name/Type	Index	Offset	Length	OP	Compare to
	ITEM-ON-HAND	1		4	EQ	0

↑
Move Up

↓
Move Down

Remove and Edit Message Field

 Remove from List

Datamap Fields

Level	Field name	Occu...	Type	Picture	Usage	Length
02	ORDER-ITEMS	10	Group		Display	54
03	ITEM-NUMBER	10	Numeric: zoned	9(8)	Display	8
03	ITEM-QUANTITY	10	Numeric: binary	S9(4)	Binary (CO...	2
03	ITEM-ON-HAND	10	Numeric: binary	S9(8)	Binary (CO...	4
03	ITEM-PRICE	10	Numeric: zoned	9(6)...	Display	8
03	ITEM COMMENTS	10	Alphanumeric	V(32)	Display	32

Datamap Name

Download Datamap

Remove Datamap from Criteria List

AND Field Name Length Index Operator Compare to Data Type Compare to

OR

Add to Criteria

Fields by Offset/Length

AND Offset Length Operator Compare to Data Type Compare to

OR

Add to Criteria

Create a message on these conditions: Conditions Selected

NORMAL
 ERROR
 CHANGED

Action

Enable Complex Selection Criteria

OK

Cancel



The current rule is NEW ORDER

File Help

Save Cancel Clear UserID Set Host Help

CICS Business Event Publisher for MQSeries™

Rule Type Selection Criteria **MQPUT Options** Message Options Return Options

Queue Name

new.orders.queue

Queue Manager Name

Specify Message Descriptor Options (MQMD_*)

Specify Put Message Options (MQPMO_*)



CICS Business Event Publisher – Possible Uses

- Event notification – new customer added, account = zero
- Activity Audits – who, what, when is accessing the file?
- Error notification – create message when error detected
- Threshold notification – stock running low
- Automation – removal of manual activity or latency in business process
- Data source for Message Brokers
- Data transfer
- External logging or notification

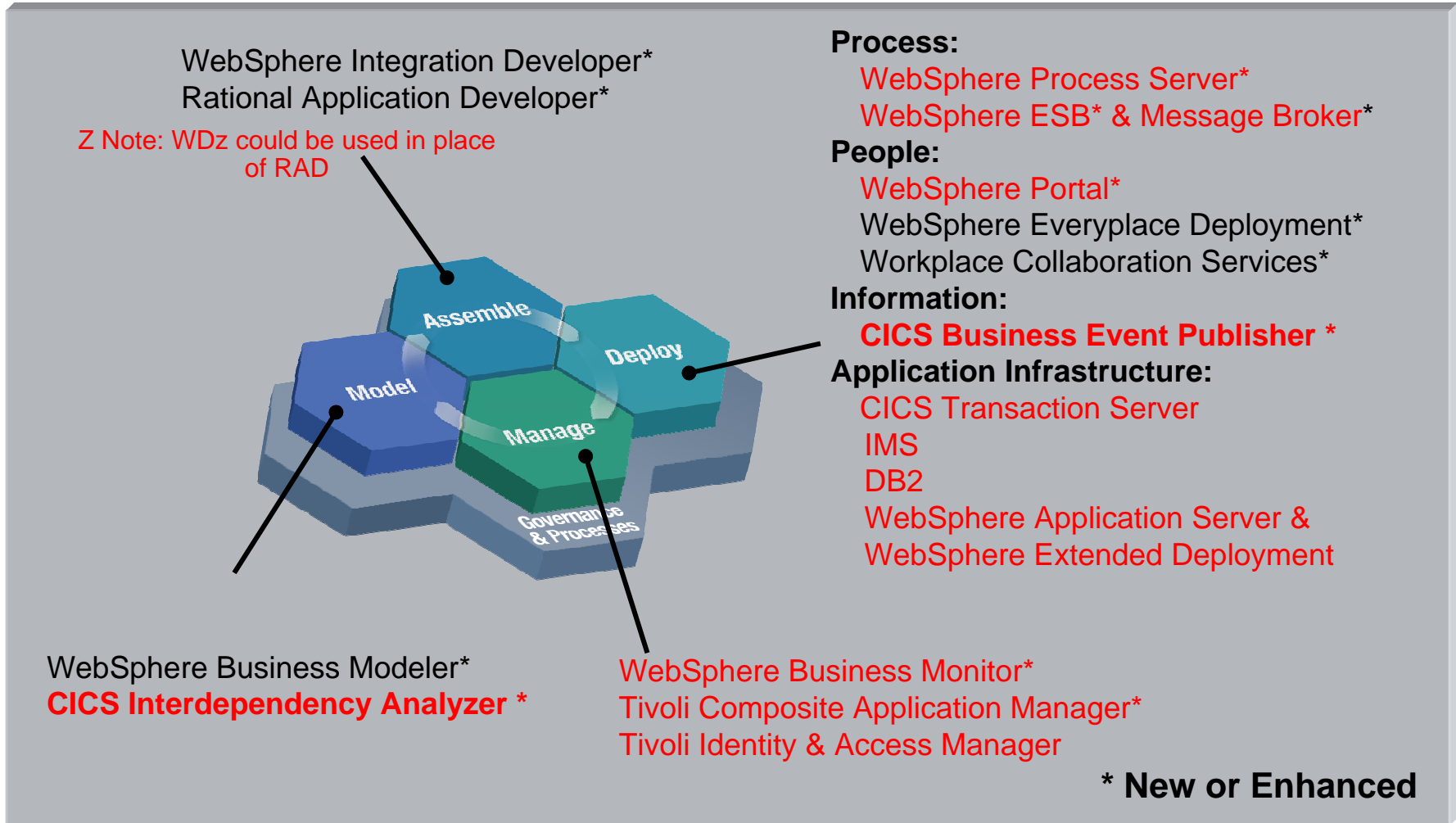
Value:

- No change to existing application programs or data
- Extends legacy to new environments



SOA Foundation

Part of a broader portfolio to meet your every need



Transform your CICS applications

**Extend and modernize
CICS applications
efficiently**

**Improve programmer
productivity**

**Increase customer
satisfaction**

Enable IT for SOA

CICS Application Modernization Tools

CICS Business Event Publisher for MQSeries®

- Create and manage outbound events using WebSphere MQ without changing existing CICS applications

CICS Interdependency Analyzer

- Understand your active application inventory for efficient maintenance and upgrades



What is CICS Interdependency Analyzer ?

- CICS Interdependency Analyzer for z/OS (CICS IA)
 - ▶ Run-time and batch reporting tool
 - ▶ Captures resource relationships such as
 - what programs have potential affinities due to the CICS API commands within them
 - which resources (Programs, Files, TSQs TDQs etc) are required by a transaction
 - what resources are no longer used
 - which transactions have affinities to other transactions and the type and lifetimes of these affinities
 - the sequencing of transactions within an application
 - which transactions have affinities to particular CICS regions
 - Includes CICS, DB2, WebSphere MQ and IMS DB resources
 - ▶ Relationship data loaded onto a DB2 data base
 - Ad hoc analysis
 - ▶ Loadlib Scanner and VSAM File Reporter
- CICS IA 2.1 GA - November 2005
 - ▶ Product number - 5697-J23



Why do you need CICS Interdependency Analyzer?

Maintaining, extending and enhancing your CICS applications more efficiently

Does any of this apply to you?

- CICS systems and applications evolved over many years (as many as 30!)
- Many changes to the applications went undocumented
- Some documentation went missing
- Source code is missing
- Even if the source code and documentation are available, the runtime application behavior differs from the original design (e.g. changed by use of exits)
- You have been through a merger/acquisition, so the information about inherited CICS systems is not available, or, if some available, time spent on the discovery process is critical to avoid business disruption
- You are providing outsourcing services, and need a complete picture of CICS resource relationships in your customer systems
- You are implementing workload balancing and need to identify affinities
- You need to minimize impact of CICS application maintenance for your customers

Potential problems:

- Costly and lengthy manual investigation
- Errors during the application changes
- High application maintenance costs
- ...even outages

Information provided by CICS IA can help to:

- Use CICS resources more efficiently
- Split workload for continuous availability
- Improve the speed and reduce cost of application maintenance
- Reduce time of problem resolution
- Minimize the impact of routine application maintenance for the end user
- Gain better understanding of how CICS components can be aggregated to form services for SOA implementations.



How do customers use CICS IA

- Large retail company
 - ▶ Complex business applications handling POS terminals, high number of regions
 - ▶ DB2 skills
 - ▶ Need to allow any transaction to run in any CICS region to improve availability
 - All of the transactions must be examined to eliminate restrictions or affinities that may exist today
 - ▶ Time pressure
 - ▶ Solution – CICS IA
 - Automates collection of the data they need
 - Loads data in a DB2 database for ease of processing
 - Helps create CSD definitions when applications are moved to a different region
 - Post-change ‘health check’
 - Also, help speed problem determination
 - E.g. Easily determining the logical flow of programs within a transaction
- Large bank
 - ▶ Need to consolidate data centres following mergers/acquisitions
 - ▶ Hundreds of CICS regions, transactions not following naming conventions
 - ▶ Solution – CICS IA
 - Used to define applications to clarify the picture of transaction and resource flow
- Large outsourcing company
 - ▶ Incorporate the workloads of their customers into their data centers
 - ▶ These workloads are often not documented well and need ‘cleaning up’ following acquisitions/mergers and other changes
 - ▶ CICS IA is used to understand the workloads and identify potentially dead code



New in CICS Interdependency Analyzer for z/OS V2.1

- An Eclipse-based graphical user interface and improved query management facilities
 - make it easy for you to access the collected data and use it in the day-to-day analysis.
 - The GUI is based on the XML application programming interface (API), so automated processes can query the database as well.
- ▶ Timer based Collector control,
 - allows the user to start the collector for a given time of day to enable targeted data collection
 - For example, you can set the tool to schedule collection in different regions throughout the data collection process.
 - Helps you to
 - work around high volume time periods
 - target collection for when an application is active.
- ▶ Enhanced single point of control capabilities
 - You can turn data collection for multiple CICS regions on and off with a single CINT command to speed selection.
- A selective program and transaction Exclude list to eliminate extraneous data and reduce overhead during data capture.
- Provision of CSD dataset name and group-list information
- ▶ Automation of tracking of runtime impact on application change by providing program version information, enabling removal of old data by version and comparison of data by program version.
- ▶ Improved installation and customisation, as well as other enhancements



CICS IA - Eclipse-based graphical user interface

Resource - QUERYtest - Eclipse SDK

HOMESYSID	PROGRAM	OBJECT	RMTSYSID
T304	CAMI710C	EQRA	----
T304	CAMI710C	EQSQ	----
T304	CAMI715C	EQRA	----
T304	CAMT220C	EQSQ	----

CICS IA Query Wizard

Custom Query:
CICS Resources

Build Custom Query

	=	select	where	=
ALL	<input type="checkbox"/>			
APPLID	<input type="checkbox"/>			
SYSID	<input checked="" type="checkbox"/>			
TRANSID	<input type="checkbox"/>			
PROGRAM	<input checked="" type="checkbox"/>	<input checked="" type="checkbox"/>	CAM%	
FUNCTION	<input type="checkbox"/>	<input checked="" type="checkbox"/>		
TYPE	<input type="checkbox"/>	<input checked="" type="checkbox"/>		
OBJECT	<input checked="" type="checkbox"/>	<input type="checkbox"/>		
OBJLENGTH	<input type="checkbox"/>	<input type="checkbox"/>		
RMTSYSID	<input checked="" type="checkbox"/>	<input type="checkbox"/>		
RMTNAME	<input type="checkbox"/>	<input type="checkbox"/>		
TERMTRAN	<input type="checkbox"/>	<input type="checkbox"/>		
TCBMODE	<input type="checkbox"/>	<input type="checkbox"/>		

Function List:

- DELETEQ
- DEL POOL
- DEQ
- DEQSYS
- DISABLE

Buttons: < Back, Next >, Finish, Cancel



CICS IA - Timer based collector control

```

Session C - [24 x 80]
CIU280          CICS Interdependency Analyzer for z/OS - V2R1M0          2005/10/18
                  Time and Date Options for                          11:22:27AM
                  CICS Sysid: TSTA          CICS Applid: IYCYZC3A

Modify the options and press Enter to update or F12 to Cancel.

Time and date slots: Y=Yes, N=No or blank=default

Hour of day: 0-1-2-3-4-5-6-7-8-9-10-11-12-13-14-15-16-17-18-19-20-21-22-23-24
              N N N N N N N N N N Y Y Y Y Y Y Y Y N N N N N N N

Day of week: Mon  Tue   Wed   Thu   Fri   Sat   Sun
              Y   Y   Y   Y   Y   N   N

Day of month: 1 2 3 4 5 6 7 8 9 10 1 2 3 4 5 6 7 8 9 20 1 2 3 4 5 6 7 8 9 30 1
              Y N N Y N N Y N N Y N N Y N N Y N N Y N N Y N N Y N N Y N N Y

Month of year: Jan   Feb   Mar   Apr   May   Jun   Jul   Aug   Sep   Oct   Nov   Dec
               Y   Y   Y   Y   Y   Y   Y   Y   Y   Y   Y   N

CICS Sysid: TSTA   CICS Applid: IYCYZC3A   TermID: TC09

F1=Help      F2=          F3=Exit      F4=          F5=          F6=
F7=          F8=          F9=          F10=         F11=         F12=Cancel
    
```

CICS IA - ISPF Customization

```

A - mvs2e
File Edit View Communication Actions Window Help

***** CICS Interdependency Analyzer for z/OS - V2R1M0 *****
Command ==> _____ More: +

Press ENTER to proceed, PF3 to exit or PF1 for Help
Press PF8 to Scroll Down, PF7 to Scroll Up

Please update the following:

Output Datasets:

OUTPUT DSN FOR SCIOUSAMP      : JAMESE.D397.SCIUSAMP.OUT7_____
OUTPUT DSN FOR SCIUCLIS      : JAMESE.D397.SCIUCLIS.OUT7_____
OUTPUT DSN FOR SCIOUSQL      : JAMESE.D397.SCIUSQL.OUT7_____
OUTPUT DSN FOR SCIUDAT1      : JAMESE.D397.SCIUDAT1.OUT7_____
OUTPUT DSN FOR SCIUDAT1      : JAMESE.D397.SCIUDAT2.OUT7_____
OUTPUT DEVICE TYPE           : SYSDA_

CICS IA variables:

IA PRODUCT QUALIFIER         : JAMESE.TESTV2
IA VSAM FILE QUALIFIER       : JAMESE.CICS_____

DB2 variables:

DB2 QUALIFIER                 : SYS2.DB2.V710_____
DB2 RUNLIB.LOAD HLQ           : DSN7102E_____
DB2 PROCLIB QUALIFIER         : DSN7102E_____
DB2 SUB SYSTEM                : DSNE
DB2 TABLE QUALIFIER          : JAMESE___
DB2 TABLE OWNER              : JAMESE___
DB2 DASD VOLUME               : SYSDA_

MA a 12/029
Connected to remote server/host WINMVS2E.HURSLEY.IBM.COM using lu/pool IYCYTC18 and port 23
gbhur189 3240/02/A on PSM:

```



CICS IA - ISPF Customization

```

A - mvs2e
File Edit View Communication Actions Window Help
***** CICS Interdependency Analyzer for z/OS - V2R1M0 *****
Command ==> _____ More: - +

CICS variables:
CICS VERSION           : V220
CICS QUALIFIER         : CTS230.CICS630_____
CICS CSD FILE NAME    : CICSTLS.CICST304.DFHCSO_____
CICS CSD LIST NAME    : TLSLIST_
RLSACCESS FOR VSAM FILES : YES
LSRPOOLID FOR VSAM FILES : NONE
CICS FILE OWNING REGION : TEST

Migartion Variables:
PREVIOUS IA QUALIFIER  : JAMESE_____
NEW IA QUALIFIER       : JAMESE_____
OLD DB2 TABLE QUALIFIER : JAMESE___
NEW DB2 TABLE QUALIFIER : JAMESE___

General variables:
ASSEMBLER PROGRAM      : ASMA90
LE QUALIFIER           : PP.ADLE370.ZOS140_____

JOB CARD HEADER:
//_CIUJOB_ JOB USER=JAMESE,NOTIFY=JAMESE,_____
//          CLASS=A,MSGCLASS=Y,REGION=0M_____
//*_____
//*_____

MA a 04/029
Connected to remote server/host WINMVS2E.HURSLEY.IBM.COM using lu/pool IYCYTC18 and port 23
|gbhurl89 3240/02/A on P5M:

```



Why use CICS IA?

- Helps you understand your active Application Inventory
 - ▶ Documentation lost or incomplete
 - ▶ Time pressure
 - ▶ Merger / Acquisition
- Helps you maintain or enhance Applications
 - ▶ Identifies the resources that are affected directly and indirectly
 - Transactions, programs, data elements:
 - Files , Queues , Screens, ...
 - ▶ Helps formulate the request for change
 - What to change, what to build, what to test, what needs to be communicated to roles involved
 - ▶ Looks across boundaries, including through shared data - files, databases or queues
- Need to balance CICS work across regions for greater availability?
 - ▶ CICS IA helps quickly identify resource relationships which need to be changed to enable transactions run anywhere
 - ▶ CICS IA helps quickly clone regions
- Version to version migration assistance
 - ▶ Build a database of application topology knowledge to reference throughout the migration process
 - ▶ Make applications threadsafe
 - CICS IA provides information needed to understand which applications conform to threadsafe standards
 - ▶ Identify OS/VS COBOL™ programs
 - LE enabled?
- CICSplex SM™ enablement
 - CICS IA identifies system and transaction affinities



CICS IA Overview - Application Query

CIU580 CICS Interdependency Analyzer for z/OS and OS/390 - V1R2M0 2003/09/10
 For your CICS Query 12:54:56PM
 WHICH RESOURCES ARE IN CallCoordinator/CICS Page 1 of 33

In Regn	Tran	Program	Resource Type	Resource Name
CORF	VA40	CAMA400C	MAP	CAM4001
	VA40	CAMA400C	PROGRAM	CAMA430C
	VA40	CAMA400C	PROGRAM	CAMA800C
	VA40	CAMA400C	PROGRAM	EZPSCCIL
	VA40	CAMA430C	FILE	CAMAAGTV
	VA40	CAMA430C	MAP	CAM4301
	VA40	CAMA430C	PROGRAM	CAM4301
	VA40	CAMA430C	TRANSID	VA43
	VA40	CAMA430C	TS	+TE+UMAP
	VA40	CAMA430C	TS	+TE+VA44
	VA40	CAMA800C	MAP	CAM8001
	VA40	CAMA800C	PROGRAM	EZPSCCIL
	VA40	CAMA800C	TRANSID	V800

CICS Sysid: TLS3 CICS Applid: IYCLZC03 TermID: TC13

F1= F2= F3=End F4=Exit F5= F6=
 F7= Page Up F8= Page Down F9= F10= F11= F12=End



Why use CICS IA in SOA projects

- Help migrate to CICS TS V3.1 – the platform for CICS-based SOA projects
 - ▶ Prepare for migration: prioritize and optimize
 - Application understanding (resources needed to by a particular application)
 - ▶ Improve speed of migration
 - Migrate through Test, Quality Assurance regions and into production faster
 - CICS Interdependency Analyzer information as input into CICS CM and as a way of comparing your current CICS region contents with the new V3.1 regions
- Identify candidate applications for new function exploitation
 - ▶ Make applications thread safe
 - Can you run your programs on Multiple TCBs?
 - ▶ Identify OS/VS COBOL programs
 - Are your programs LE enabled?
 - ▶ Provide detailed information to help create web services



Why use CICS IA in SOA projects

• What is a 'threadsafe' program ?

- A threadsafe program
 - Must be written to threadsafe standards.
 - Must use appropriate serialization techniques when accessing any shared resources.
 - Must be Language Environment-conforming or assembler programs.
 - Capable of executing concurrently on multiple TCBs
 - Cannot rely on QR to serialize access to **shared resources** and storage.
 - Use serialization techniques
 - Compare and swap
 - Enqueue/Dequeue
 - All programs accessing a shared resource must be threadsafe.



Why use CICS IA in SOA projects

What are the shared resources ?

- Typical examples of shared resources are the CICS CWA, global user exit global work areas and storage acquired explicitly by the application program with the shared option.
- You can check whether your application programs use these types of shared storage by looking for occurrences of the following EXEC CICS commands:
 - ADDRESS CWA
 - EXTRACT EXIT GASET
 - GETMAIN SHARED
 - LOAD
- CICS IA collects and records this information



Why use CICS IA in SOA projects

How can CICS IA help ?

CICS IA collects resource information on the previously mentioned resources. This data is stored in the DB2 database tables and can be queried using SQL. For example :-

- Show me all programs which execute an 'ADDRESS CWA' command.
 - `SELECT PROGRAM OBJECT FROM CIU3_CICS_DATA WHERE FUNCTION='ADDRESS';`
- Or
- Show me all transactions and programs that use [shared resources](#)
 - `SELECT TRANSID , PROGRAM , FUNCTION, OBJECT FROM CIU3_CICS_DATA WHERE FUNCTION IN ('LOAD ', 'EXTRACT ', 'GETMAIN ', 'ADDRESS ');`



Why use CICS IA in SOA projects

TRANSID	PROGRAM	FUNCTION	OBJECT
VA90	EQZ1RCV	LOAD	EQZTSCT
VA90	EQZ1REL	LOAD	EQZTSCT
VA90	EQZ1SET	LOAD	EQZTSCT
V220	EQZ1IDEN	LOAD	EQZTSCT
V220	EQZ1IPGV	LOAD	EQZTSCT
V220	EQZ1MONS	LOAD	EQZTSCT
V220	EQZ1RCV	LOAD	EQZTSCT
V220	EQZ1REL	LOAD	EQZTSCT
V895	CAMA895C	LOAD	CAMTACTH
V895	CAMA895C	LOAD	CAMTAPTH
V895	CAMA895C	LOAD	CAMTAXTH
V200	EQZ1SWCH	LOAD	EQZTSCT
V800	CAMA800C	LOAD	EZPSCCIL
V800	EZPACTLC	GETMAIN	ADDR
V800	EZPACTLC	LOAD	CAMLICIL
V800	EZPACTLC	LOAD	CAMLMTSL
V800	EZPACTLC	LOAD	CAMNL01L
V800	EZPACTLC	LOAD	EZPLD01L
V800	EZPACTLC	LOAD	EZPNL01L
V800	EZPACTLC	LOAD	EZPSLNGL
TST4	EMSTEST4	ADDRESS	CWA



Why use CICS IA in SOA projects

What else can CICS IA do ?

CICS IA reports the current TCB mode for each EXEC CICS (or DB2, MQ, DLI) call.

Tran	Program	Offset	Command	Resource					
		Sysid	Usage	First Run	Last Run	Term	TCBmode		
TS01	TS010001	00000366	READQ TSQUEUE	TS1A+TE+					
		----	33	2004-12-21	17.43.59	2004-12-21	17.44.14	Y	QR
		000004D0	READQ TSQUEUE	TS1M+TE+					
		----	33	2004-12-21	17.43.59	2004-12-21	17.44.14	Y	QR
		000007C4	WRITEQ TSQUEUE	TS1A+TE+					
		----	320	2004-12-21	17.43.59	2004-12-21	17.44.15	Y	QR
		0000088C	WRITEQ TSQUEUE	TS1M+TE+					
		----	320	2004-12-21	17.43.59	2004-12-21	17.44.15	Y	QR



How can CICS IA assist with migration to CICS TS 3.1?

What else can CICS IA do ?

You could also use the list of API calls that are not threadsafe and query the DB2 table to identify programs that use these calls.

You can also use the CIULMS scanner to detect possible commands by populating the DB2 table CIU3_SCAN_DETAIL. Then use the following query :

-

```
SELECT DSNAME, PROGRAM, COMMAND, RESOURCE_TYPE  
FROM CIU3_SCAN_DETAIL  
WHERE COMMAND IN ('LOAD ', 'EXTRACT ', 'GETMAIN ', 'ADDRESS ');
```



How can CICS IA assist with migration to CICS TS 3.1?

Sample output -

DSNAME	PROGRAM	COMMAND	RESOURCE_TYPE
CIU.TEST.LOADLIB	EMSPLT	EXTRACT	EXIT
CIU.TEST.LOADLIB	EMSTERM	EXTRACT	EXIT
CIU.TEST.LOADLIB	EMSTESTS	ADDRESS	CWA
CIU.TEST.LOADLIB	EMSTEST4	ADDRESS	CWA
CIU.TEST.LOADLIB	EMS1XT13	GETMAIN	SHARED
CIU.TEST.LOADLIB	EMS1XT22	GETMAIN	SHARED
CIU.TEST.LOADLIB	EMS1XT23	GETMAIN	SHARED
CIU.TEST.LOADLIB	EMS2XT13	GETMAIN	SHARED
CIU.TEST.LOADLIB	EMS2XT22	GETMAIN	SHARED
CIU.TEST.LOADLIB	EMS2XT23	GETMAIN	SHARED
CIU.TEST.LOADLIB	EMS3XT13	GETMAIN	SHARED
CIU.TEST.LOADLIB	EMS3XT22	GETMAIN	SHARED
CIU.TEST.LOADLIB	EMS3XT23	GETMAIN	SHARED
CIU.TEST.LOADLIB	EMS4XT13	GETMAIN	SHARED
CIU.TEST.LOADLIB	EMS4XT22	GETMAIN	SHARED
CIU.TEST.LOADLIB	EMS4XT23	GETMAIN	SHARED
CIU.TEST.LOADLIB	OIUA300C	LOAD	PROGRAM
PTF.V2R1M0.SEZPLOAD	CAMAA00C	LOAD	PROGRAM



How can CICS IA assist with migration to CICS TS 3.1?

• Is your program LE enabled ?

- The CICS IA scanner now tells you whether your COBOL or PLI programs are LE enabled.
- You can use the summary report produced by the scanner

Module Name	Module Length	Module Language	Language Version	Possible statements.....			Comment
				Affinities	Dependencies	MVS POSTs	
CAMAA00C	000086F0	COBOL II	LE	15	30	0	
CAMAA10C	0000B780	COBOL II	LE	19	46	0	
CAMATRCC	00004460	ASSEMBLER		16	22	0	

- Or you can query the CIU3_SCAN_SUMMARY table :-
 - SELECT * FROM CIU3_SCAN_SUMMARY
WHERE LANGUAGE='COBOL' AND LE NOT='LE';



CICS Interdependency Analyzer – help with Sarbanes-Oxley Compliance

- Perform internal auditing across the CICS enterprise
- Help document CICS TS programs to achieve SOX compliance
- Be adopted quickly for SOX compliance
- Leverage other CICS TS; DB2 an/or IMS based compliance initiatives to reduce cost of SOX compliance
 - ▶ CICS IA reports on all resources (CICS programs; VSAM, DB2, IMS files; etc.) that occur within the CICS TS enterprise
 - ▶ CICS IA information is stored in a DB2 table (defined during CICS IA installation)
 - ▶ Users can quickly produce ad-hoc SQL reports (using the CICS IA DB2 table as input) for documentation



Summary

- We've looked at 2 CICS tools, which :
 - ▶ Assist with enabling SOA and SOAP
 - ▶ Assist with Sarbanes-Oxley Compliance
 - ▶ Assist with LE Enablement
 - ▶ Improve programmer productivity
 - ▶ Understand the complexities within your system
 - ▶ Identify performance issues within your system
 - ▶ Extend your CICS apps to new environments

More Information

- ▶ CICS tools web site , including library (user guides, manuals)
 - www.ibm.com/software/htp/cics/tools

