



IBM IMS Audit Management Expert for z/OS

**Taking the guesswork out of auditing your IMS
databases**

IMS Audit Management Expert for z/OS Version 1.1

Barry Davis
Product Specialist

Agenda

- **Tool Overview**
 - Features
 - Architecture
- **Tool Walk Through**
 - Screen shots of Report UI
 - Screen shots of Administration UI
- **Questions**

IMS Audit Management Expert for z/OS

- **A tool that collects and correlates data access information from the IMS and SMF Logs**
- **A tool that assists a company's efforts to comply with Regulatory Compliance**
- **Separates the roles of auditing and database administration**

IMS Audit Management Expert for z/OS Features

- **Saves time and effort by eliminating manual auditing processes**
- **Facilitates common auditing tasks**
 - determining who updated a particular object
 - time frame
 - monitoring access to specific objects
- **Shows a detailed analysis for any changes being monitored by IMS Audit Management Expert**
- **Defines various filter policies for collecting and reporting data**

IMS Audit Management Expert for z/OS Features

- **Allows auditors to obtain information**
 - without being defined as IMS users
 - work without extensive interaction with Data Base and System Administrators
 - Auditors will not be able to directly manipulate IMS resources

IMS Audit Management Expert for z/OS

■ Data collection

- **IMS Audit Management Expert can collect and correlate many different types of information into its audit repository:**
 - **Access to database data sets and image copy data sets as recorded in SMF**
 - **Changes to databases as recorded in the IMS log**
 - **User access to the IMS system via SIGNON as recorded in the IMS log**
 - **PSB and database 'change of state' activity as recorded in the IMS log**
 - **System STOP and START activity as recorded in the IMS log**
- **IMS does not log DB GET (reads) to databases**
 - **The total number of reads for all DB in application will be in the accounting record, but there is no record of read only**

IMS Audit Management Expert for z/OS

■ Reporting user interface

- Provides auditors with flexible options for examining the data in the audit repository

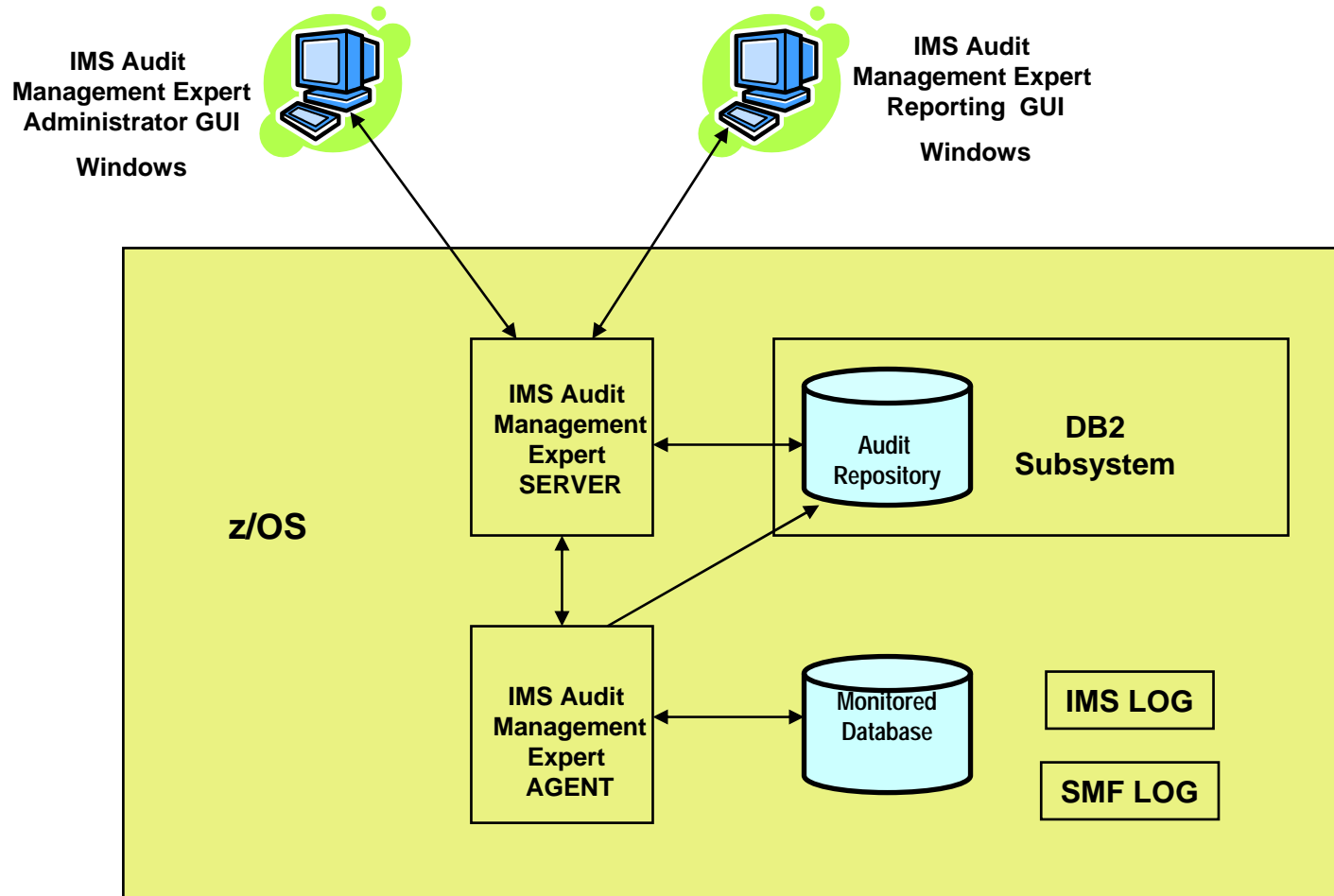
■ Administration user interface

- Provides administrators with flexible options
 - for user management, auditing profiles, and reporting authorizations

IMS Audit Management Expert Components

- **SERVER**
 - Started task or batch job
- **AGENT**
 - Started Task or batch job
 - One per IMS System to Audit
- **CLIENT**
 - Reporting Analysis GUI
 - Administrator GUI
 - Windows
- **AUDIT REPOSITORY**
 - DB2 Tables and Views
- **PROFILE**
 - Defines
 - Collection Profile
 - Authorization Profile
 - User Profile

IMS Audit Management Expert Architecture





IBM IMS Audit Management Expert for z/OS

Using IMS Audit Management Expert Report UI



IMS AUDIT MANAGEMENT EXPERT



User Name

Password

Login Disconnect Help

Disconnected

IMS Audit Management Expert Reporter

File Reports Settings Help

Log in Reporting

IBM **IMS SYSTEMS** DATASETS | AD HOC **IMS AUDIT MANAGEMENT EXPERT** Welcome Barry

> Overview Subsystem < Back Help

Report Options:

Date Range:

From: Calendar >
Mon, Jan 22, 2007

To: Calendar >
Mon, Feb 26, 2007

Hour: 0

Last Summary Table Update: 02-26-2007

Log Type:
All

Activity Result:
All

Set Filter...

Set time period to check for Threshold:
 Every Hour
 Every Day
 Every Week
 Every Month

Refresh

Edit Thresholds... Collection History

System Activity:

Rollback [IMS]	g. IMS STOP and START [IMS]	j. CPIC STOP and START [IMS]
Change [SMF]	h. User Sign-ON and OFF [IMS]	k. Database STOP and START [IMS]
Read [SMF]	i. PSB STOP and START [IMS]	

em: RS01 |K9A1

Systems Activity:

g.	j.
h.	k.
i.	

> Available Dates: 2007-1-25 to 2007-1-29

Normal

Warning

Critical

Date Range From:

December 2006

Sun	Mon	Tue	Wed	Thu	Fri	Sat
					1	2
3	4	5	6	7	8	9
10	11	12	13	14	15	16
17	18	19	20	21	22	23
24	25	26	27	28	29	30
31						

OK Cancel

Users_Overview

4.48 0.15 100%

Connected to IMS-K9A1 on RS01 Reporting

IMS Audit Management Expert Reporter
Welcome barry

IMS SYSTEMS
DATASETS | AD HOC
IMS AUDIT MANAGEMENT EXPERT

> Overview
Subsystem
< Back
Help

Report Options:

Date Range:

From: Calendar >
Mon, Jan 22, 2007 Hour: 0

To: Calendar >
Mon, Feb 26, 2007 Hour: 23

Last Summary Table Update: 02-26-2007 8:58

Log Type:
All

Activity Result:
All

Set Filter...

Set time period to check for Threshold:

Every Hour

Every Day

Every Week

Every Month

Refresh

Edit Thresholds...

Collection History

Database Activity:		System Activity:	
a. First INSERT [IMS]	d. Rollback [IMS]	g. IMS STOP and START [IMS]	j. CPIC STOP and START [IMS]
b. First UPDATE [IMS]	e. Change [SMF]	h. User Sign-ON and OFF [IMS]	k. Database STOP and START [IMS]
c. First DELETE [IMS]	f. Read [SMF]	i. PSB STOP and START [IMS]	

Subsystem: RS01 |K9A1

Database Activity:		Systems Activity:	
a.	d.	g.	j.
b.	e.	h.	k.
c.	f.	i.	

> Available Dates: 2007-1-25 to 2007-2-25

Users_Overview
-0.31
3.56
100%

Connected to IMS-K9A1 on RS01
Reporting

IMS Audit Management Expert Reporter

File Reports Settings Help

Log in Reporting

IBM **IMS SYSTEMS** DATASETS | AD HOC IMS AUDIT MANAGEMENT EXPERT Welcome Barry

> Overview Subsystem < Back Help

Report Options:

Date Range:

From: Calendar >
Mon, Jan 22, 2007

Hour: 0

To: Calendar >
Mon, Feb 26, 2007

Hour: 23

Last Summary Table Update: 02-26-2007

Log Type:
All

Activity Result:
All

Set Filter...

Set time period to check for Thresholds:

Every Hour

Every Day

Every Week

Every Month

Database Activity:

a. First INSERT [IMS] d. Rollback [IMS]

b. First UPDATE [IMS] e. Change [SMF]

System Activity:

g. IMS STOP and START [IMS] j. CPIC STOP and START [IMS]

h. User Sign-ON and OFF [IMS] k. Database STOP and START [IMS]

Normal

Warning

Critical

Set Threshold Criteria For Reports

Activity	Normal If Less Than:	Critical If Greater Than:
a. First INSERT [IMS]	500	1,000
b. First UPDATE [IMS]	500	1,000
c. First DELETE [IMS]	500	1,000
d. Rollback [IMS]	500	1,000
e. Change [SMF]	500	1,000
f. Read [SMF]	500	1,000
g. IMS STOP and START [IMS]	500	1,000
h. User Sign-ON and OFF [IMS]	500	1,000
i. PSB STOP and START [IMS]	500	1,000
j. CPIC STOP and START [IMS]	500	1,000
k. Database STOP and START [IMS]	500	1,000

OK Cancel Help

Refresh Collection History

Edit Thresholds...

Users Overview

-0.31 3.56 100%

Connected to IMS-K9A1 on RS01 Reporting

IMS Audit Management Expert Reporter

File Reports Settings Help

Log in Reporting

IBM **IMS SYSTEMS** DATASETS | AD HOC IMS AUDIT MANAGEMENT EXPERT Welcome barry

Filter Data Option

Option

Filter Criteria:

Available Users	Available PSB Name	Available PSB Program Types	Available Job Name	Available Databa...
> All Users * <EMPTY> ABXFP0CA ABXPSB00 ABXTSTCA	> All PSBs <EMPTY> ABX019 ABX026 ABX043 ABXFP0CA	> All PSB Program Types <EMPTY> BATCH BMP	> All Jobs <EMPTY> AB9TST1L AB9TST1P AB9TSTCP ABXIMS10	> All Database <EMPTY> ABXFP01 ABXFP0C ABXTST0
Add	Add	Add	Add	Add
Users Refresh	PSB Name Refresh	PSB Program Types Refresh	Job Name Refresh	Da Refresh
Selected Users	Selected PSB Name	Selected PSB Program Types	Selected Job Name	Selected Databa...
> All Users	> All PSBs	> All PSB Program Types	> All Jobs	> All Databases
Remove	Remove	Remove	Remove	Remove
Remove All				
OK		Cancel		Help

Report Options:

Date Range:

From: **Mon, Jan 22, 200**

To: **Mon, Feb 26, 200**

Log Type:

All

Activity Result:

All

Set time period to

Every Hour

Every Day

Every Week

Every Month

Users_Overview

-0.31 | 3.56 | 100%

Connected to IMS-K9A1 on RS01 Reporting

IMS Audit Management Expert Reporter
_ □ ×

File Reports Settings Help

Log Report Open Report Save Report Save As Report Delete

IMS SYSTEMS
DATASETS | AD HOC
IMS AUDIT MANAGEMENT EXPERT

> Overview
Subsystem
Welcome barry

Report Options:

Date Range:

From: Calendar >
Mon, Jan 22, 2007

Hour: 0

To: Calendar >
Mon, Feb 26, 2007

Last Summary Table Update: C

Log Type:
All

Activity Result:
All

Set Filter...

Set time period to check for

Every Hour

Every Day

Every Week

Every Month

Database Activity:		System Activity:	
a. First INSERT [IMS]	d. Rollback [IMS]	g. IMS STOP and START [IMS]	j. CPIC STOP and START [IMS]
b. First UPDATE [IMS]	e. Change [SMF]	h. User Sign-ON and OFF [IMS]	k. Database STOP and START [IMS]
c. First DELETE [IMS]	f. Backup [SMF]	i. DBP STOP and START [IMS]	

Normal

Warning

Critical

Save Report
×

Saved Reports:

Name	Created	Last Updated	User	Subsystem
Payroll Audit	February 19, 2007 6:52:32 ...	February 19, 2007 6:52:32 ...	barry	N/A, OVERVIEW REPORT

Name:

Save Close Refresh Help

Refresh
Edit Thresholds...
Collection History

Users_Overview

Connected to IMS-K9A1 on RS01 Reporting
-4.07
3.62
100%

IMS Audit Management Expert Reporter

File Reports Settings Help

Log in Reporting

IBM **IMS SYSTEMS** IMS AUDIT MANAGEMENT EXPERT Welcome barry
> Collection History < Back Help

Report Options:

Date Range:
From: Hour:
To: Hour:
[> Available Dates: 2006-12-26 to 2007-1-17](#)

Subsystem:
> All Subsystems
RS22|T81B

Collection Status Timeline for: RS22|T81B

Collecting
Not Collecting
Down

Jan 2007

Users_Overview_History

-1.7 -1.22 100%

Connected to IMS-T81B on RS22 Reporting

IMS Audit Management Expert Reporter
Welcome barry

File Reports Settings Help
< Back Help

Log in Reporting

IMS SYSTEMS

DATASETS | AD HOC

IMS AUDIT MANAGEMENT EXPERT

Overview
> Subsystem
SubDetail

Report Options:

Date Range:

From: Calendar >

Week Starting: Sun, Jan 28, 2007

To: Calendar >

Week Ending: Sat, Mar 24, 2007

> Available Dates: 2007-1-25 to 2007-3-11

Last Summary Table Update: 03-20-2007 15:35

Subsystem:

RS01 |K9A1

Log Type:

All

Activity Result:

All

Set Filter...

Set time period to check for Threshold:

Every Hour

Every Day

Every Week

Every Month

Export Data...

Refresh

Chart Options...

Display Colors...

Summary Report for Subsystem: RS01|K9A1

Absolute Count of Activity:

█ Successful █ Failed

Activity	Successful	Failed
a.	12	0
b.	86	0
c.	11	0
d.	0	0
e.	5	0
f.	8	0
g.	327	0
h.	323	153
i.	323	0
j.	0	0
k.	216	0

Threshold Summary by Week:

█ Critical █ Warning █ Normal

Week	Critical	Warning	Normal
a.	0	0	5
b.	0	1	4
c.	0	0	5
d.	0	0	5
e.	0	0	5
f.	0	0	5
g.	0	0	5
h.	0	0	5
i.	0	1	4
j.	0	0	5
k.	0	0	5

Summarizes activity by Absolute Count

Absolute Count of Activity By Week:

Linear Log + - <

a. First INSERT [IMS] b. First UPDATE [IMS] c. First DELETE [IMS] d. Rollback [IMS] e. Change [SMF] f. Read [SMF]

g. IMS STOP and START [IMS] h. User Sign-ON and OFF [IMS] i. PSB STOP and START [IMS] j. CPIC STOP and START [IMS]

k. Database STOP and START [IMS]

Users_Subsystem
0.85 2.06 100%

Connected to IMS-K9A1 on RS01 Reporting

18

© 2007 IBM Corporation

IMS Audit Management Expert Reporter
_ _ X

File Reports Settings Help

Log in Reporting

IMS SYSTEMS
DATASETS
AD HOC
IMS AUDIT MANAGEMENT EXPERT

Welcome barry

Overview
> Subsystem
SubDetail

< Back
Help

Report Options:

Date Range:

From: Calendar >

Week Starting: Sun, Jan 28, 2007

To: Calendar >

Week Ending: Sat, Mar 24, 2007

> Available Dates: 2007-1-25 to 2007-3-11

Last Summary Table Update: 03-20-2007 15:35

Subsystem:

RS01 | K9A1

Log Type:

All

Activity Result:

All

Set Filter...

Set time period to check for Threshold:

Every Hour

Every Day

Every Week

Every Month

Export Data... Refresh

Chart Options... Display Colors...

Summary Report for Subsystem: RS01|K9A1

Absolute Count of Activity:

Category	Successful	Failed
a.	12	0
b.	86	0
c.	11	0
d.	5	0
e.	8	0
f.	327	0
g.	323	153
h.	327	0
i.	216	0
j.	11	0
k.	0	0

Threshold Summary by Week:

Category	Normal	Warning	Critical
a.	5	0	0
b.	4	1	0
c.	5	0	0
d.	5	0	0
e.	5	0	0
f.	5	0	0
g.	5	0	0
h.	5	0	0
i.	4	1	0
j.	5	0	0
k.	5	0	0

Absolute Count of Activity By Week:

a. First INSERT [IMS] b. First UPDATE [IMS] c. First DELETE [IMS] d. Rollback [IMS] e. Change [SMF] f. Read [SMF]

g. IMS STOP and START [IMS] h. User Sign-ON and OFF [IMS] i. PSB STOP and START [IMS] j. CPIC STOP and START [IMS]

k. Database STOP and START [IMS]

Users_Subsystem

-1.18
0.88
100%

IMS Audit Management Expert Reporter

File Reports Settings Help

Log in Reporting

IBM **IMS SYSTEMS** DATASETS | AD HOC IMS AUDIT MANAGEMENT EXPERT Welcome barry

Overview **> Subsystem** SubDetail < Back Help

Report Options: **Summary Report for Subsystem: RS01|K9A1**

Audit Management Expert Data for users_subsystem

Option

Record Count: 11

ROW	TIME	RESULT	MVS_SYST...	EVENT_TYPE	CONTEXT_T...	DESCRIPTION	START_TIME	END_TIME	CORR_TIME	CORR_ID_1	CORR_ID_IM...	US
1	2007-02-27 13...	000		IMS050	53	DB DELETE CALL	2007-02-27 13...	2007-02-27 13...		42 K9A1		DFSIV
2	2007-02-27 13...	000		IMS050	53	DB DELETE CALL	2007-02-27 13...	2007-02-27 13...		42 K9A1		DFSIV
3	2007-02-27 14...	000		IMS050	53	DB DELETE CALL	2007-02-27 14...	2007-02-27 14...		48 K9A1		PDDA'
4	2007-03-01 10...	000		IMS050	53	DB DELETE CALL	2007-03-01 10...	2007-03-01 10...		54 K9A1		DFSIV
5	2007-03-01 10...	000		IMS050	53	DB DELETE CALL	2007-03-01 10...	2007-03-01 10...		54 K9A1		DFSIV
6	2007-03-01 11...	000		IMS050	53	DB DELETE CALL	2007-03-01 15...	2007-03-01 15...		76 K9A1		PDSUJ
7	2007-03-01 11...	000		IMS050	53	DB DELETE CALL	2007-03-01 11...	2007-03-01 11...		68 K9A1		DFSIV
8	2007-03-01 21...	000		IMS050	53	DB DELETE CALL	2007-03-02 16...	2007-03-02 16...		100 K9A1		DFSIV
9	2007-03-01 21...	000		IMS050	53	DB DELETE CALL	2007-03-02 16...	2007-03-02 16...		100 K9A1		DFSIV
10	2007-03-01 21...	000		IMS050	53	DB DELETE CALL	2007-03-04 11...	2007-03-04 11...		103 K9A1		DFSIV
11	2007-03-01 21...	000		IMS050	53	DB DELETE CALL	2007-03-04 11...	2007-03-04 11...		103 K9A1		DFSIV

Copy Export Cancel Close

Every Week
 Every Month

Export Data... Refresh

Chart Options... Display Colors...

a. First INSERT [IMS]
 b. First UPDATE [IMS]
 c. First DELETE [IMS]
 d. Rollback [IMS]
 e. Change [SMF]
 f. Read [SMF]

g. IMS STOP and START [IMS]
 h. User Sign-ON and OFF [IMS]
 i. PSB STOP and START [IMS]
 j. CPIC STOP and START [IMS]

k. Database STOP and START [IMS]

Users_Subsystem

-1.18 0.88 100%



Report Options:

Date Range:

From:

Week Starting: Sun, Jan 28, 2007

To:

Week Ending: Sat, Mar 24, 2007

> Available Dates: 2007-1-25 to 2007-3-11

Last Summary Table Update: 03-20-2007 15:35

Subsystem:

Log Type:

Activity Result:

Set time period to check for Threshold:

- Every Hour
- Every Day
- Every Week
- Every Month

Summary Report for Subsystem: RS01|K9A1

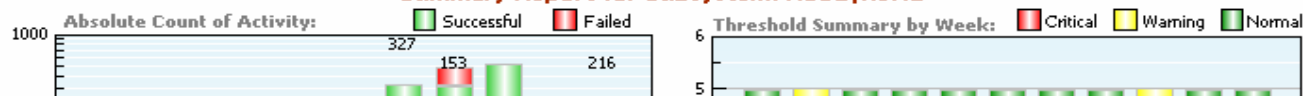


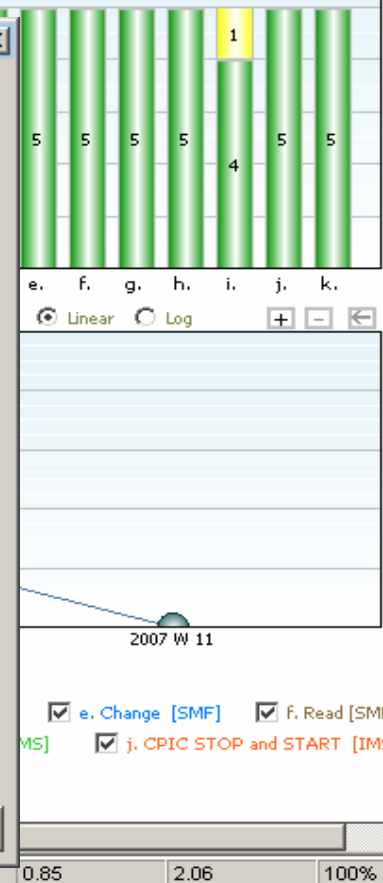
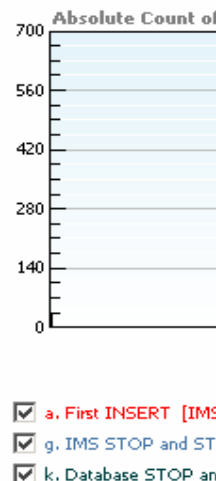
Chart Options

Select Activities to Hide in Charts:

- a. First INSERT [IMS]
- b. First UPDATE [IMS]
- c. First DELETE [IMS]
- d. Rollback [IMS]
- e. Change [SMF]
- f. Read [SMF]
- g. IMS STOP and START [IMS]
- h. User Sign-ON and OFF [IMS]
- i. PSB STOP and START [IMS]
- j. CPIC STOP and START [IMS]
- k. Database STOP and START [IMS]
- Hide Threshold Chart

Set Absolute Count Chart Axis:

Linear Axis Logarithmic Axis



IMS Audit Management Expert Reporter
Welcome barry

File Reports Settings Help
Log in Reporting

IMS SYSTEMS

DATASETS

AD HOC

IMS AUDIT MANAGEMENT EXPERT

Overview
SubDetail
Back
Help

Report Options:

Date Range:

From: Calendar >

Week Starting: Sun, Jan 28, 2007

To: Calendar >

Week Ending: Sat, Mar 24, 2007

> Available Dates: 2007-1-25 to 2007-3-11

Subsystem:

RS01 |K9A1

Log Type:

All Set Filter...

Activity Result:

All

Graph Display (middle chart):

Job

User

PSB_Type

PSB_Name

Database

Every Day

Every Week

Every Month

Export Data... Refresh

Chart Options... Display Colors...

Summary of Detailed Report for Subsystem: RS01|K9A1

Absolute count of Activity:

Successful Failed
Linear Log
+ - <

Category	Successful	Failed
a.	12	0
b.	86	0
c.	11	0
d.	0	0
e.	5	0
f.	8	0
g.	~300	0
h.	323	153
i.	~350	0
j.	0	0
k.	~200	16

Count of top 10 Jobs for selected Activity:

Successful Failed
Linear Log
+ - <

Job	Successful	Failed
<EMPTY>	1,534	153
K9AF11	1,381	0
K9AM11	71	0
PDCART	9	0
SJSDB1D	8	0
SJSDB1I	8	0
SJSDB3I	6	0
K9ADL1	6	0
SJSDB3D	5	0
SJSDB3U	2	0

Absolute Count of Activity By Week:

a. b. c. d. e. f. g. h. i. j. k.
Linear Log
+ - <

Users_SubDetail

-3.66 -0.34 100%

IMS Audit Management Expert Reporter
File Reports Settings Help

Log in Reporting

IMS SYSTEMS
DATASETS
IMS AUDIT MANAGEMENT EXPERT

Welcome barry

< Back
Help

Report Options:

Date Range:

From: Calendar >
Sat, Jan 6, 2007 Hour: 0

To: Calendar >
Thu, Jan 18, 2007 Hour: 23

> Available Dates: 2006-7-21 to 2007-1-18

Subsystem:
RS22|T81B

Graph Display (middle chart):

Job

User

Database

Dataset

Show Top Number:
5

Set time period to group by:

Every Hour

Every Day

Every Week

Every Month

Set Filter...
Refresh

Export Data...
Display Colors...

Summary of Datasets for Subsystem: RS22|T81B

■ a. ■ b. ■ c. ■ d. ■ e. ■ f. ■ g. ■ h.

Absolute count of SMF Dataset Activity:

Linear Log

Category	Count
a. Created	762
b. Deleted	1,355
c. Renamed	0
d. Open Read	1,329
e. Open Update	2,665
f. Alter	0
g. Closed	4,873
h. Accounting	0

Count of top 5 Datasets for selected SMF Activity:

Linear Log

Dataset Name	Count
RSTEST.ABX.IMS.DB.ABXTSTCD	1,843
RSTEST.ABX.IMS.DB.ABXTSTCD.DATA	1,195
RSTEST.ABX.IMS.DB.DJ2F	610
RSTEST.ABX.IMS.DB.DJ1F	571
RSTEST.ABX.IMS.DB.DJ1C	570

Absolute Count of Dataset Activity By Day:

Linear Log

Users_Datsets

-2.65 -0.23 100%

Connected to IMS-T81B on RS22 Reporting

23

© 2007 IBM Corporation

IMS Audit Management Expert Reporter
Welcome barry

IMS SYSTEMS

DATASETS

IMS AUDIT MANAGEMENT EXPERT

< Back
Help

Report Options:

Date Range:

From: Calendar >
Sat, Jan 6, 2007 Hour: 0

To: Calendar >
Thu, Jan 18, 2007 Hour: 23

[> Available Dates: 2006-7-21 to 2007-1-18](#)

Subsystem:
RS22|T81B

Graph Display (middle chart):

Job

User

Database

Dataset

Show Top Number:
5

Set time period to group by:

Every Hour

Every Day

Every Week

Every Month

Set Filter... Ref

Export Data... Display

Summary of Datasets for Subsystem: RS22|T81B

Absolute count of SMF Dataset Activity: Linear Log

Activity	Count
a. Created	762
b. Deleted	1,355
c. Renamed	0
d. Open Read	1,329
e. Open Update	2,665
f. Alter	0
g. Closed	4,873
h. Accounting	0

Subsystem:
RS22|T81B

Audit Management Expert Data for users_datsets

Option

Record Count: 1329

ROW	TIME	RESULT	MVS_SYST...	EVENT_TYPE	CONTEXT_T...	DESCRIPTION	START_TIM
1	2007-01-08 13...		RS22	SMF062		3 SMF: Open Read	
2	2007-01-08 13...		RS22	SMF062		3 SMF: Open Read	
3	2007-01-08 13...		RS22	SMF062		3 SMF: Open Read	
4	2007-01-08 13...		RS22	SMF062		3 SMF: Open Read	
5	2007-01-08 13...		RS22	SMF062		3 SMF: Open Read	
6	2007-01-08 13...		RS22	SMF062		3 SMF: Open Read	
7	2007-01-08 13...		RS22	SMF062		3 SMF: Open Read	
8	2007-01-08 13...		RS22	SMF062		3 SMF: Open Read	
9	2007-01-08 13...		RS22	SMF062		3 SMF: Open Read	
10	2007-01-08 13...		RS22	SMF062		3 SMF: Open Read	
11	2007-01-08 13...		RS22	SMF062		3 SMF: Open Read	
12	2007-01-09 23...		RS22	SMF062		3 SMF: Open Read	

Users_Datsets

Copy
Export
Cancel
Close

Connected to IMS-T81B on RS22 Reporting

IMS Audit Management Expert Reporter
Welcome barry

File Reports Settings Help
< Back Help

Log in Reporting

IBM
IMS SYSTEMS | DATASETS **AD HOC** | IMSAUDIT MANAGEMENT EXPERT

> Ad Hoc Summary

Report Options:

Date Range:

From: Calendar > Hour:
Week Starting: Sun, Jan 28, 2007

To: Calendar > Hour:
Week Ending: Sat, Mar 24, 2007

[> Available Dates: 2007-1-25 to 2007-3-11](#)

Subsystem:
RS01|K9A1

Log Type:
All

Activity Result:
All

Graph Display (middle chart):

Database

- Job
- User
- Database

Set time period to group by:

Every Hour
 Every Day
 Every Week
 Every Month

Export Data...
Refresh

Set Filter...
Display Colors...

Summary of Detailed Ad Hoc Report for Subsystem: RS01|K9A1

Successful Failed

Absolute count of Activity: Linear Log

349	324	320	237	218	191	171	155	154	153	
START PSB	DB AREA DS OPEN	DB OPEN FULL FUNCTION	DB CLOSE FULL FUNCTION	IMS ONLINE START						SIGN OFF -FORCED

Count of top 10 Databases for selected Activity: Linear Log

1,318	153	1,165	488	304	250	175	166	17	13
<EMPTY>	IVPDB3	IVPDB1	IVPDB1I	DBFSAMD4	IVPDB2	DI21PART	DBFSAMD3		

Absolute Count of Activity By Week: Linear Log

2007 W 05	2007 W 07	2007 W 09	2007 W 10	2007 W 11
~0	~0	~2250	~500	~0

Users_Adhoc
1.97 2.99 100%



IBM IMS Audit Management Expert for z/OS

Using IMS Audit Management Expert Administration UI

IMS Audit Management Expert Administration barry@IMS-I81A on R501

File Edit Settings Help

Users Groups IMSs Agents Collection Profiles Collections Authorizations Repository

User Name	Description	Connect to Audit Management Expert	Create Users	Create Groups	Create Profiles	Edit Profiles	Assign Permis
adhadmin	Audit Man...	<input checked="" type="checkbox"/>	<input checked="" type="checkbox"/>	<input checked="" type="checkbox"/>	<input checked="" type="checkbox"/>	<input checked="" type="checkbox"/>	<input checked="" type="checkbox"/>
adhlimited	Audit Man...	<input type="checkbox"/>	<input type="checkbox"/>	<input type="checkbox"/>	<input type="checkbox"/>	<input type="checkbox"/>	<input type="checkbox"/>
aeadmin	aeadmin	<input checked="" type="checkbox"/>	<input checked="" type="checkbox"/>	<input checked="" type="checkbox"/>	<input checked="" type="checkbox"/>	<input checked="" type="checkbox"/>	<input checked="" type="checkbox"/>
barry	Barry Dav...	<input checked="" type="checkbox"/>	<input checked="" type="checkbox"/>	<input checked="" type="checkbox"/>	<input checked="" type="checkbox"/>	<input checked="" type="checkbox"/>	<input checked="" type="checkbox"/>

New User Wizard

User Name | Permissions | Groups | Summary

User Name:

Password:

Description:

Expires in: days.

This grants the user the ability to utilize the Audit Management Expert system along with additional privileges granted to them or to the groups to which they are assigned. An optional description or comment can also be provided. The password will expire after the indicated number of days, and the user must provide a new one.

Next > Finish Cancel

New User Wizard

User Name
Permissions
 Groups
 Summary

User Privileges

<input checked="" type="checkbox"/> Connect to Audit Management Expert	<input type="checkbox"/> Assign Connect
<input type="checkbox"/> Create Users	<input type="checkbox"/> Assign Permissions
<input type="checkbox"/> Create Groups	<input type="checkbox"/> Assign Users to Groups
<input type="checkbox"/> Create Profiles	<input type="checkbox"/> Edit Profiles
<input type="checkbox"/> Manage Repository	

New User Wizard

User Name
Permissions
Groups
Summary

Available Groups

- admin
- limited

Assigned Groups

Add
Add All
Remove
Remove All

< Back Next > Finish Cancel

New User Wizard

- User Name
- Permissions
- Groups
- Summary**

User Summary

new user

Out side Auditor

Password (encrypted) hDZYOkDv6wXCj8DctNARjQ==

Expires 2007-03-06 00:00:00

Groups

- limited

Permissions

- Connect to Audit Management Expert

IMS Audit Management Expert Administration barry@IMS-K9A1 on R501

File Edit Settings Help

Users Groups **IMSSs** Agents Collection Profiles Collections Authorizations Repository

IMS Entry Name	Description	RESLIB	Version	RECON1	
K9A1_IMSv9	IMS V9 on RS01	IMS.K9A1.SDFSRESL	9	IMS.K9A1.RECON1	IMS

◀ | | ▶

Add Edit Clone Refresh

IMS Editor

IMS name
Agent
RECONS
Summary

IMS entry name

Description

IMS Version

IMS databases can be specified for auditing. Create the IMS entry, specify the name, IMS Version, RESLIB, RECONS, and Agent associated with the IMS database. An optional description or comment can also be provided.

Finish Cancel

IMS Editor

IMS name
Agent
RECONS
Summary

Available Agents

Finish Cancel

IMS Editor [minimize] [maximize] [close]

IMS name
Agent
RECONS
Summary

IMS RESLIB data set name

RECON1 data set name

RECON2 data set name

RECON3 data set name

The screenshot shows a window titled "IMS Editor" with a sidebar on the left containing a tree view with the following items: "IMS name", "Agent", "RECONS", and "Summary". The "Summary" item is selected and highlighted. The main area of the window displays the "IMS Summary" for "K9A1_IMSv9". The summary is organized into sections: "Description" (IMS V9 on RS01), "Reslib" (IMS.K9A1.SDFSRESL), "Version" (9), "Recons" (IMS.K9A1.RECON1, IMS.K9A1.RECON2, IMS.K9A1.RECON3), and "Agent" (RS01K9A1). At the bottom right of the window are "Finish" and "Cancel" buttons.

IMS Editor

IMS name
Agent
RECONS
Summary

IMS Summary

K9A1_IMSv9

Description

- IMS V9 on RS01

Reslib

- IMS.K9A1.SDFSRESL

Version

- 9

Recons

- IMS.K9A1.RECON1
- IMS.K9A1.RECON2
- IMS.K9A1.RECON3

Agent

- RS01K9A1

Finish Cancel

IMS Audit Management Expert Administration barry@IMS-K9A1 on RS01

File Edit Settings Help


Users Groups **IMSs** **Agents** Collection Profiles Collections Authorizations Repository

Type	Agent	State	Log Level	SMF Mask
	RS01 K9A1	Collecting	INFO	RS01:RSPROD.RS01.SMFDUMP.G%...

Agent Editor [-] [□] [X]

Status
 SMF Masks
 Summary

The agent collects audit data about the monitored IMS. The log level determines the amount of information about the execution of the agent that is generated while the agent runs. The log level does not effect the audit data.

Agent  RS01JK9A1

OS z/OS

Database IMS

Status Collecting

Log Level

Finish Cancel

Agent Editor

Status

SMF Masks

Summary

The SMF data set name mask is used to select SMF data sets from the catalog. For a sysplex, a mask should be specified for each LPAR with a unique SMF log naming convention. If the SMF data is coalesced into a single log, then only one SMF mask need be specified.

Mask for RS01

Mask for RS02

Finish Cancel

Agent Editor [-] [□] [X]

Status
SMF Masks
Summary

Agent Summary

RS01|K9A1

OS

- ◆ z/OS

Database

- ◆ IMS

Status

- ◆ Collecting

Log level

- ◆ INFO

SMF Masks

- ◆ RS01:RSPROD.RS01.SMFDUMP.G%%%%V%%
- ◆ RS02:RSPROD.RS02.SMFDUMP.G%%%%V%%

[Finish] [Cancel]

IMS Audit Management Expert Administration barry@IMS-K9A1 on R501

File Edit Settings Help

Users Groups IMSs Agents **Collection Profiles** Collections Authorizations Repository

Profile Name	Description	Last Modified	Rules	Active Collections
K9A1_PROFILE	PROFILE FOR IMS K9A1	2007-02-16 17:24:20	1	0

Add Edit Clone Delete Refresh

Collection Profile Editor

K9A1_PROFILE

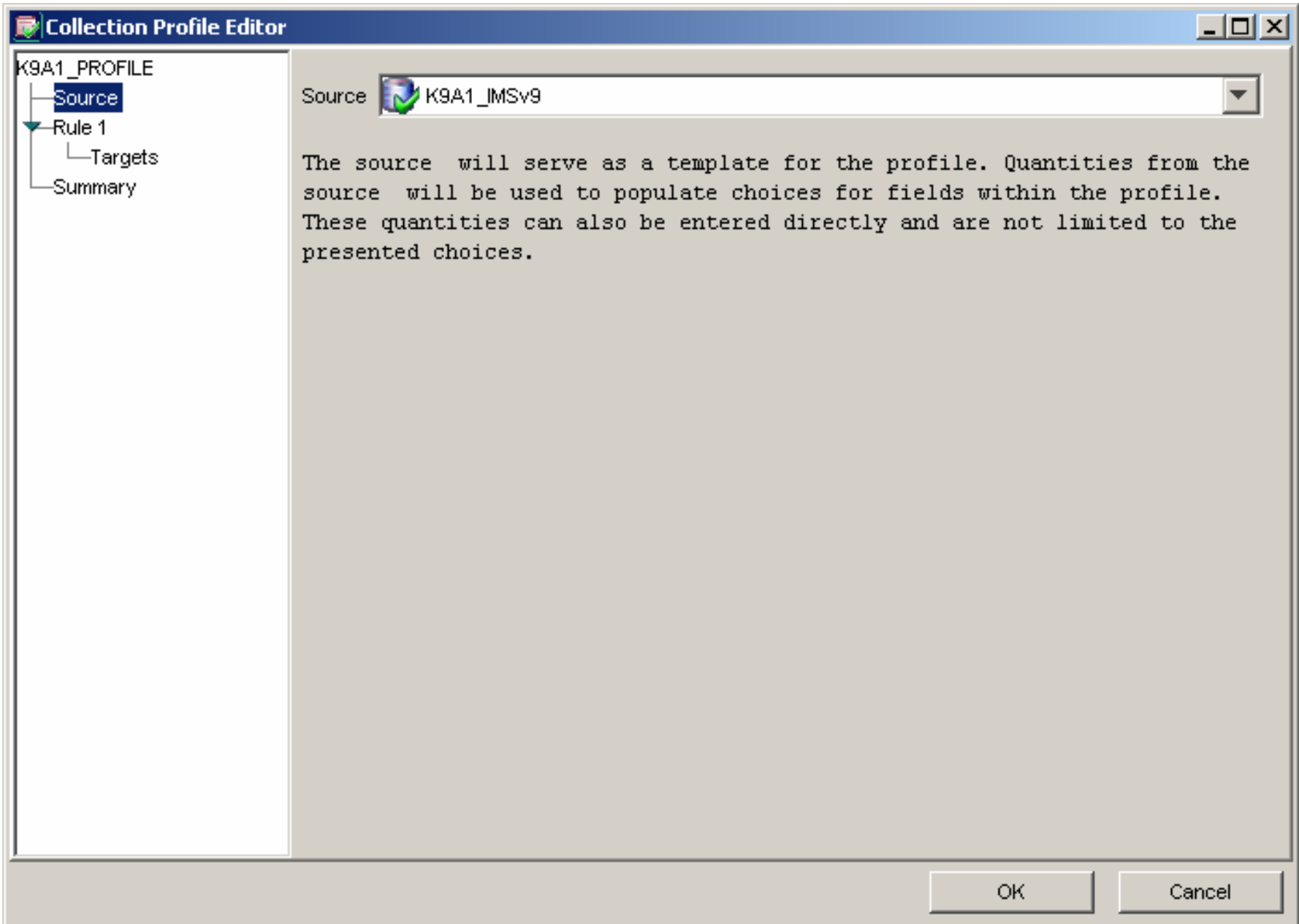
- Source
- Rule 1
 - Targets
- Summary

Profile Name: K9A1_PROFILE

Description: PROFILE FOR IMS K9A1

Provide a name and optional description for this collection profile. The name must be unique to this profile. Later steps provide the opportunity to specify what is to be audited by this collection profile.

OK Cancel



Collection Profile Editor

DSTCollProfile02

- Source
- Rule 1
 - Targets**
 - Summary

Databases

Target Filter

Name *

Known targets

Type	Name
<input type="checkbox"/>	ABXTSTC

Other targets

Type Name

Audited targets

Type	Name
<input type="checkbox"/>	ABXFP01
<input type="checkbox"/>	ABXFP0C
<input type="checkbox"/>	ABXTST0
<input type="checkbox"/>	ABXTST1
<input type="checkbox"/>	ABXTST2
<input type="checkbox"/>	ABXTST3
<input type="checkbox"/>	ABXTST4
<input type="checkbox"/>	CBRIALL
<input type="checkbox"/>	CBRIPBF
<input type="checkbox"/>	CBRIPDB
<input type="checkbox"/>	CBRIPLA
<input type="checkbox"/>	CBRIPLH
<input type="checkbox"/>	CBRIPLL
<input type="checkbox"/>	CBRIPSS
<input type="checkbox"/>	DJ1E
<input type="checkbox"/>	DJ1F
<input type="checkbox"/>	DJ2E
<input type="checkbox"/>	DJ2F
<input type="checkbox"/>	DJ3E
<input type="checkbox"/>	DJ3F
<input type="checkbox"/>	HDBAC01
<input type="checkbox"/>	HDBAC02

Add users to Authorizations

IMS Audit Management Expert Administration barry@IMS-I81A on RS01

File Edit Settings Help

Users Groups IMSs Agents Collection Profiles Collections **Authorizations** Repository

User or Group	Applies to	Status	Since
barry	K8A1	Active	2007-01-15 08:53:50
limited	K8A1	Active	2007-01-15 08:52:14
auadmin	K8A1	Active	2007-01-15 08:50:59
admin	K8A1	Active	2007-01-15 08:51:18

Add Edit Clone Delete Refresh



IBM IMS Audit Management Expert for z/OS

Questions

