



IBM WebSphere Portal

Experience the revolution:
WebSphere Portal for z/OS



ON DEMAND

IBM WebSphere Portal Version 6.0

1

Improves efficiency and productivity

2

Accelerates application and content deployment

3

Delivers responsiveness and reliability at lower cost



- Administration
- Web Content Management
- IBM Infocenter
- Site Map
- Logout

ed

emos, and essential links to help customizing your site today!

Demo Central

Get up to speed quickly with these demos and product tours.

Lotus Domino 8 Product Tour

Lotus Domino 8 Product Tour

More Demos

Add and Rearrange Page Content
Click the + icon to access the palette from the page bar to add content to the page. You can drag and drop content to rearrange the page layout.

To Create a New Page
Hover over the page bar, click on the context arrow, and select new page. You can create a new page from scratch or use the current page as a starting point.

Need additional help?
Click on the ? icon in the page bar to open the contextual help flyout. Click on the banner to access main menu items from the IBM Infocenter.

Use the Main Menu to move around
1
New and Updated Themes & Skins. Roll over Menus

2
Simply grab a portlet on the page or from the slide out palette and drag to the desired location on the page

4
Quick Links – URL pages to other site areas

3
Slide out palette lets you add new portlets to that page

IMAGES AND SCREENSHOTS ARE SUBJECT TO CHANGE

Help & Support

Search Help [icon] [icon]

Contextual Help

Contents
Index

Customize this page

- Hover over the page name in the page bar and select edit page from the drop down menu
- Once in edit mode, you can edit the contents of the page inline using the editing tools and choose to apply the changes to the current page or a new page

Create a new page

- Hover over the page bar and select new page from the drop down menu

Other Links

- IBM.com
- IBM software
- IBM WebSphere
- IBM Worklight
- IBM Software Development
- Partner World

Portal Document Manager new look & feel

Look & Feel

- Native MS Office Icon
- Icons show document state

Ease of Use

- Drag & Drop in the Browser
- One Click Edit button
- Contextual Menus
- Simplify ACL interface
- Subscribe to a documents & folders

Admin

- Multiple file import
- Custom Metadata & Columns
- Customize the “New” Menu

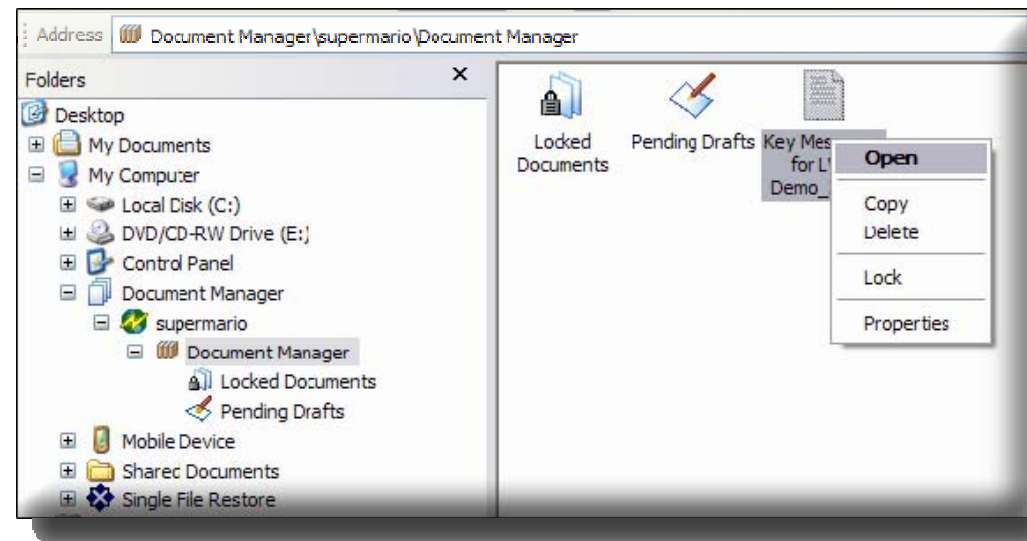
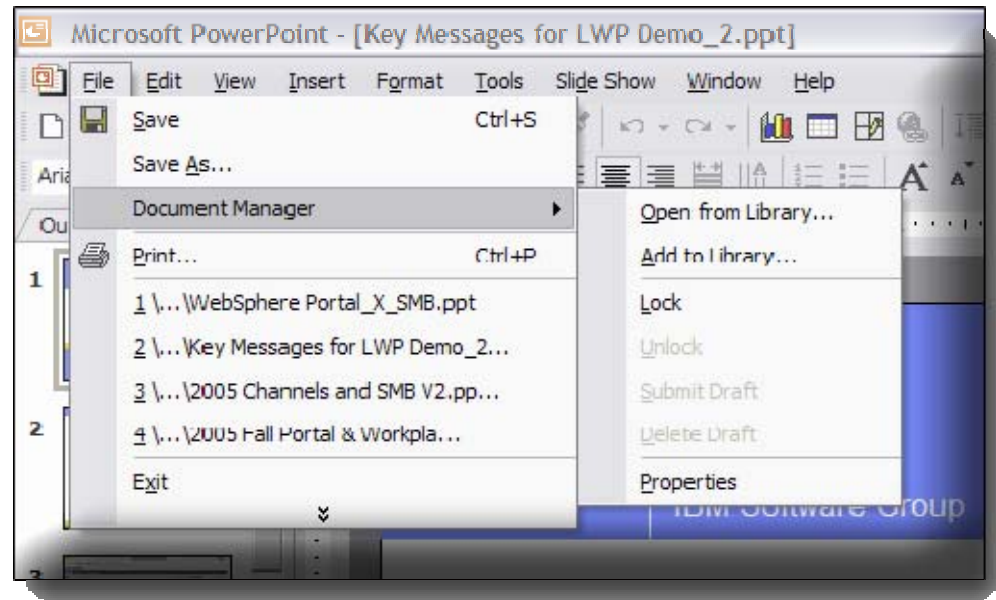
The screenshot displays the Document Manager interface with the following elements:

- Document Manager** header with a dropdown menu.
- Buttons for **New**, **Import File**, and **More Actions**.
- Marketing Program** folder icon and name.
- Search Libraries** search bar with an **Advanced** link.
- My Libraries** sidebar containing:
 - Contracts
 - Loan Applications
 - Marketing Programs (expanded)
 - All Documents
 - My Documents
 - What's New
 - Private Drafts
 - Custom Views
 - Templates
 - Advertising
 - Legal Resources
 - Planning
 - Project Plan
 - Promotions
- Document list table:

		Author	Last Modified
<input type="checkbox"/>		Design Partners Program	Palmer Kunkle 7/27/05
<input type="checkbox"/>		Customer Values Program	Rachael Stanley 7/26/05
<input type="checkbox"/>		Design Partners Contacts	Roger Freeman 7/14/05
<input type="checkbox"/>		Promotions - 2005	Colin Stafford 5/06/05
- Contextual menu for **Design Partners Contacts** (open):
 - Published 7/14/05
 - Your access: Reader
 - Subscription is enabled
 - Edit** (highlighted)
 - View
 - Lock
 - Copy to...
 - Copy
 - Move
 - Delete
 - Replace...
 - More
- Bottom status: **Hide Folders** and **0 folders, 4 documents**.

Microsoft Integration

- **Microsoft Office Integration**
 - Power Point, MS Word & Excel
 - Check in, check out
- **Microsoft Windows**
 - Drag & Drop
 - Right click support
- **Business Value**
 - Secure Storage & File level security
 - Leverage existing MS products (MS Office 97 & Higher)
 - One step away from sharing documents



Improved Search raises productivity

■ Usability

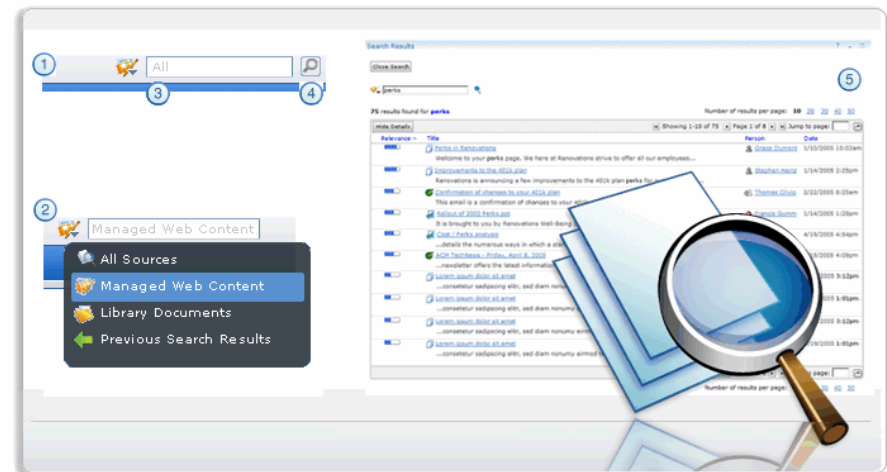
- Search Center improvements
- Search performance improvements on indexing throughput (single digit % improvement)
- Site map provides Secure “outline” of Portal hierarchy
- Search API (SI-API) published externally for applications

■ External Search of Portal Content

- Better search results from Google and other search engines

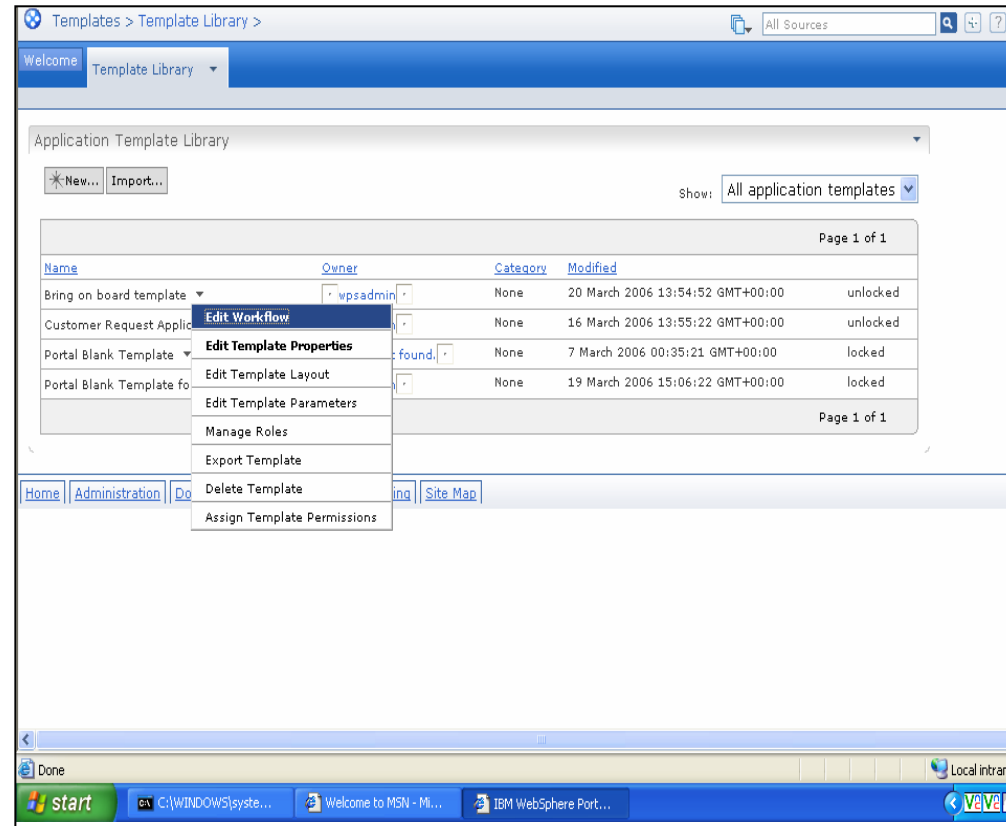
Welcome to Search Center

Find what you're looking for, anytime, anywhere. . .it's that easy



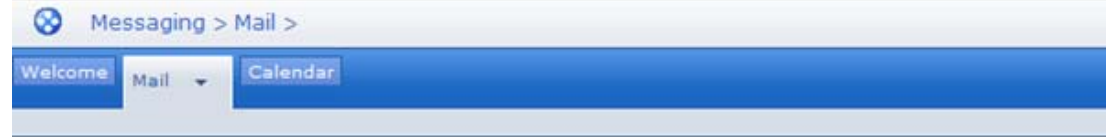
Automate departmental tasks with Workflow Builder


- **Business User tool for simple workflows**
 - Many processes handled via email today
 - Automate best practices or infrequent tasks
 - Example: Bringing new employee on board
- **Workflow definition**
 - Roles
 - Tasks
 - Actions
- **Workflow Binder includes all related documents for a given workflow**
- **Utilizes BPEL engine**
- **Integrated into Portal Composite Application template model**
- **Business Value**
 - Reduction of errors
 - Consistently better decisions

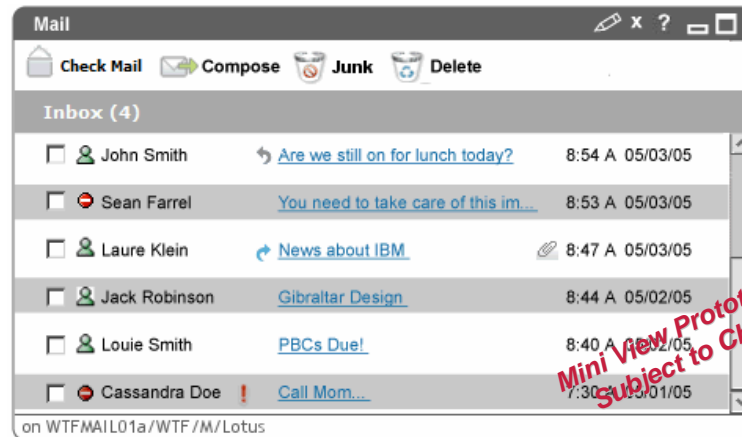
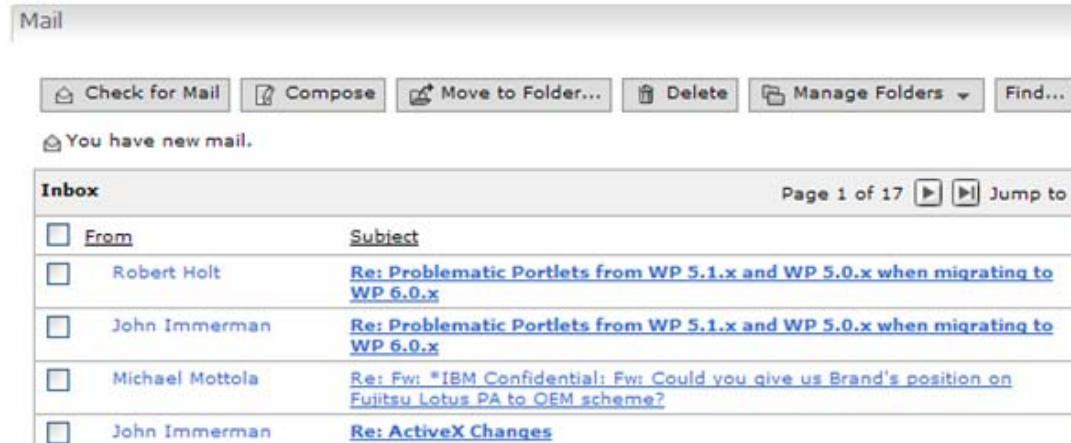


Common PIM Portlets

- **Enhanced UI**
 - Mini View Portlets
 - Mail & Calendar
 - Drag & Drop
 - Usability Enhancements
- **Exchange Functionality**
 - Exchange 2003 support
 - Auto discovery of mail file for non Domino backends
 - Out of Office
- **Increased Deployability**
- **Performance Enhancements**
 - Domino & Exchange



 You can access your Lotus Domino-based, Microsoft Exchange-based, IMAP-based, or POP3-based e-mail from the IBM Common Mail portlet, which is part of the Common Personal Information Management (PIM) portlets. System administrators can configure this portlet by clicking on the **Configure page** icon. Individual users can manage their portlet settings by clicking the **Edit page** icon. If you have problems configuring this portlet, contact your system administrator.



Domino & Extended Product Portlets (DEPP) Enhancements

- **Performance improvements**
- **Support for Domino 7.0**
- **Notes View**
 - Domino 7, WSRP support , improved UI
- **Domino Web Access**
 - Domino 7 support, support for Domino redirect db, more features
- **Quickplace**
 - Domino 7, improved UI, place creation
- **Sametime contact list**
 - Improved ease of use, sorting

IBM WebSphere Portal - Mozilla Firefox

File Edit View Go Bookmarks Tools Help

http://shimmerportal.notesdev.ibm.com:10038/wps/myportal/!ut/p/c1/04_SB8K8xLLM9MSSzPy8xBz9CP0os3i3QC9Hw...

Google Hotmail IBM Internal Help Ho... IBM Standard Softw... BluePages

Home > My Work >

Welcome My Work Getting Started

My Work

Quick Links

- Go to Documents to organize and share documents, enable document-approval workflow, create a folder hierarchy, and more. myWork.webContent = Web Content
- Go to Messaging to integrate mail and calendar functions from your existing messaging system into your site.
- Go to Domino Integration to integrate Domino Documents, Sametime, Quickplaces, and more into your site.
- Go to Personalization to create rules that customize what the site displays to each user.

My Tasks

[Claim](#) [Cancel Claim](#)

-- Message Detail -- -->

An error occurred while retrieving the task list.

<input type="checkbox"/>	Task	Created	Description
Page 1 of 1			

Reminder

Monday, March 27, 2006

No reminders found

World Clock

Local Time:

Transferring data from shimmerportal.notesdev.ibm.com...

IBM WebSphere Portal Version 6.0

1

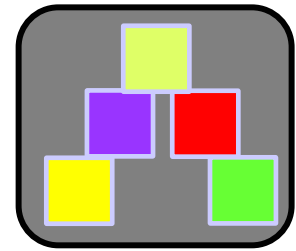
Improves efficiency and productivity

2

Accelerates application and content deployment

3

Delivers responsiveness and reliability at lower cost



Portal as platform for Composite Applications

- **Build and deploy composite applications using portal services**
 - Personalization, collaboration, search, orchestrated workflow,....
 - Portal framework provides the aggregation and integration
- **New Concepts:**
 - **Templates**
 - **Application Context**
 - **Membership / Community**
 - **Application Roles**
- **Application Programming Model built on SOA Principles**
- **Business Value**
 - Reuse critical assets
 - Business flexibility since it is easier/cheaper to make changes

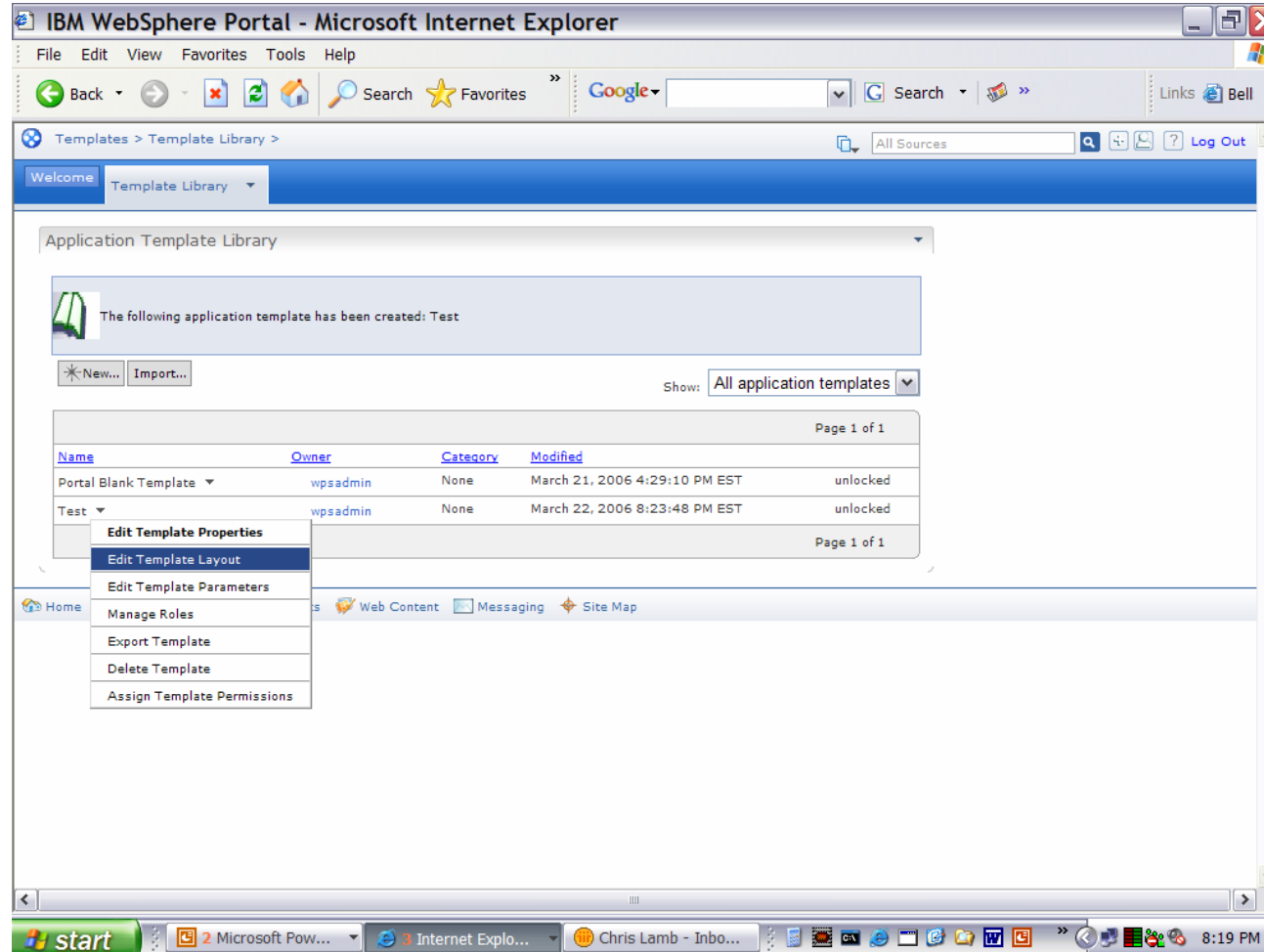
The screenshot displays a financial dashboard for IBM. It includes several sections:

- Company Tracker:** Shows the company name 'International Business Mach.', last price at \$5.1, a change of 0.29, and a volume of 3,304.
- CT Stock:** Provides detailed stock information for 'IBM - International Business Mach. (NYSE)' as of Wednesday, August 25, 2004. It lists the current price at 85.07, a day's range from 85.27 to 84.53, and other metrics like volume (4.41M), shares outstanding (1.68B), and market cap (142.51B).
- CT Chart:** A line chart showing the stock price movement for 'IBM International Business Mach.' from September to August. The price fluctuates between approximately 80 and 100.
- Indicators:** A control panel for the chart with options for 'Moving Averages', 'Other Indicators', and 'Display' settings.
- CT Profile:** A detailed profile for 'International Business Ma' as of Thursday, August 26, 2004. It includes:
 - Address:** One New Orchard Road, Armonk, NY 12524, Phone: (914) 499-1900
 - Industry Information:** Computer Hardware, Technology, 319,272 Employees, Market Cap (M\$): 142,508.41, Updated: 20040730
 - Business description:** IBM provides customer solutions through the use of advanced information technology. These solutions include technologies, systems, products, services, software and financing. For the 6 months ended 6/30/04, revenues rose 9% to \$45.4B. Net income from cont. ops. rose 13% to \$3,290. Results reflect higher revenues from all industry sectors except Global Financing across all geographies due to the growth in demand and new applications.
 - Key ratios:**

	Indust.	Indust.	Sector
P/E Ratio(TTM)	18.28	24.99	29.11
P/E High - Last 3 Yrs	33.30	34.33	63.08
P/E Low - Last 3 Yrs	16.23	17.36	18.91
 - Officers & Inquiries:** Lists executives like Samuel J. Palmisano (Chairman/Pres./CEO) and John R. Joyce (COO).
 - Transfer Agent:** First Chicago Trust Company of NY.
 - Competitors:** Sun Microsystems Inc., Intel/Packard Bell, Dell Computer Corp., Oracle Corporation, Microsoft Corp.

Build Composite Applications with Portal Application Templates

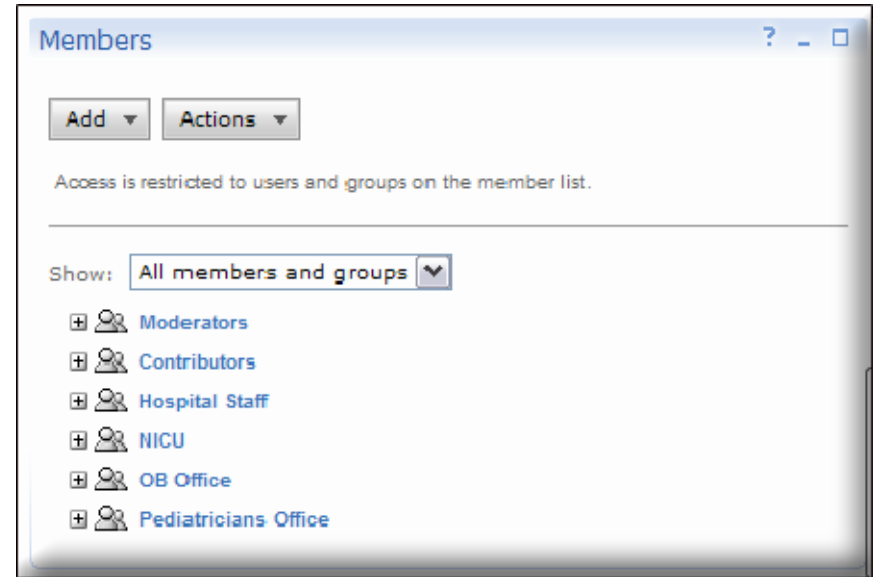
- **Easily create new composite applications**
- **Deploy them to different communities with different...**
 - Look and feel
 - Members and Roles
 - Other Parameters
- **Application owners can then change it to meet new requirements**



Membership and Roles

- **Create unique “Roles” for members**
 - Build upon template for SOA / Composite application

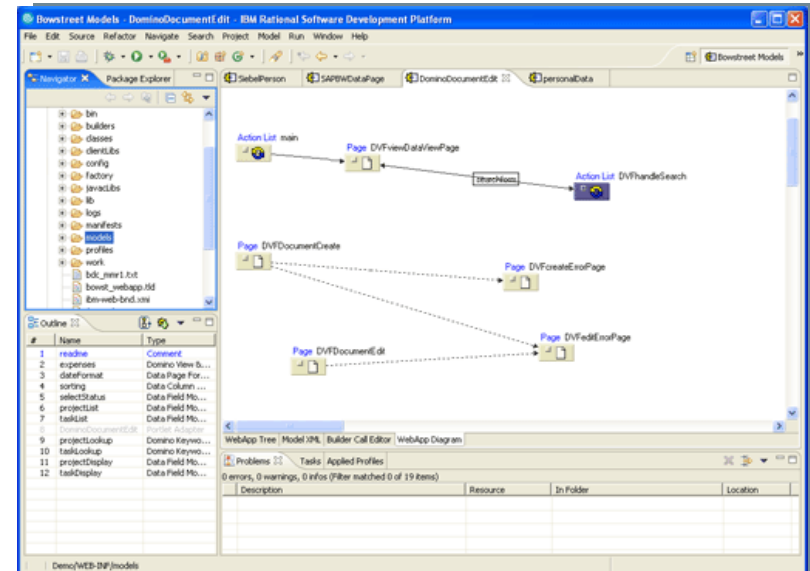
- **Business Value**
 - Simplified interface to apply “rights” for each of the members
 - Designed for Business person No IT required
 - Create new SOA Composite applications that inherit current membership



Type	Access	Description
Workplace	Manager	People with this role ca
Page		
Application Component	Administrator	Can read, create and
Application Component	Manager	Can edit all list items;
Application Component	Manager	Can edit all list items;
Page		
Application Component	Manager	Can edit all list items;
Page		

WebSphere Portlet Factory Speeds SOA Value & Deployment of WebSphere Portal

- **Automation** for multi-page, complex portlets without coding – speeds development/deployment
- **Change** simplified for evolving business requirements – increases efficiency of IT, LOB and users
- **Reuse** for generation of new portlets from existing portlet models on demand – serve more business and user requirements for more value
- **SOA** for integration/delivery of existing applications and portlet interfaces as reusable services – flexibility for increased productivity and ROI



Using the tool [Portlet Factory] also saved Allmerica \$1 million in development costs, Clifton adds. The technology enabled Allmerica to build the portal in four months, whereas using API technology would have taken about 16 months, he estimates.

Mike Clifton, Vice President of IT, Allmerica Insurance

Source: *Insurance & Technology*, May 2005

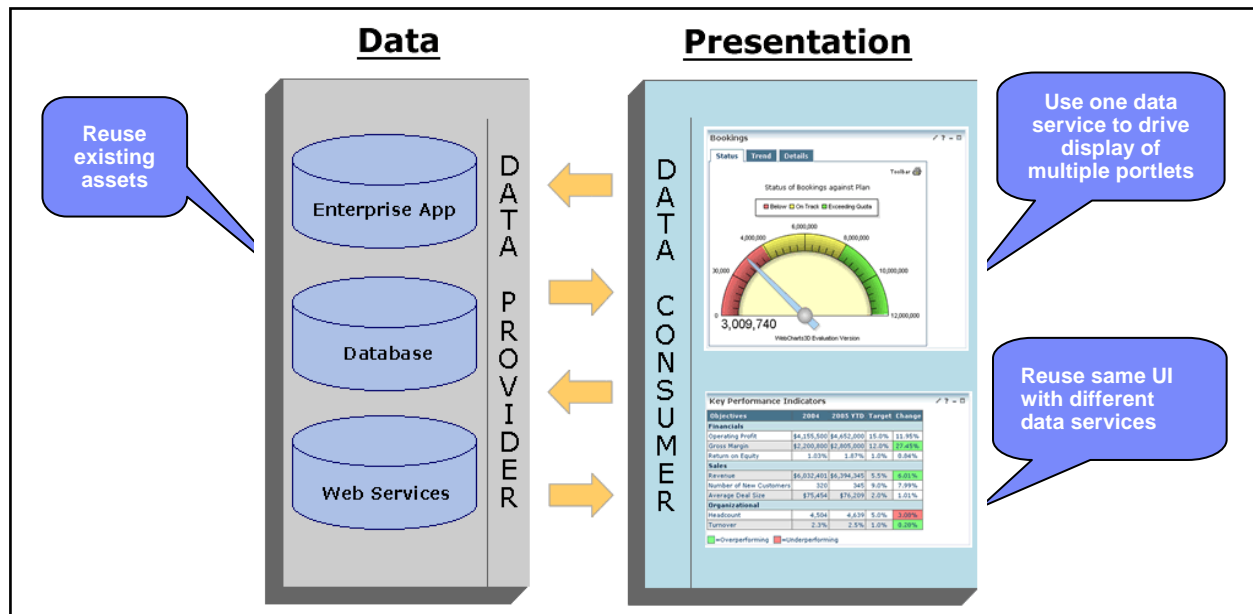
<http://www.insurancetech.com/story/showArticle.jhtml?articleID=160906146>

WebSphere Portlet Factory v 6.0

- **Developer Success** - Improved getting started wizards along with updated examples and tutorials
- **Cooperative Portlets Support** - Simplifies the creation of portlets enabled using with inter-portlet (portlet-to-portlet) communication
- **Edit Defaults Support** - Enables portlet values to be easily customized using the new Edit Defaults mode in WebSphere Portal.
- **Multi-language Support**
- **WP 6.0 and WAS 6.1 Support**

Portlet Factory Automates SOA

- Reuse of existing assets
- Automates back end connectivity
- Speeds creation of new applications



Web Content Management Usability Improvements

■ Authoring usability enhancements:

- Inline Editing for in-context content changes
- User-friendly, simple template for entering new content
- Improved process for including personalization rules in new content
- Full text search and searches within searches
- Improved process for including personalization rules in new content
- New views allow users to find their content easily
- New welcome page to help authors get started

Web Content Management Welcome

Author, edit, and manage content for your site in a few simple steps.

1 Templates. Separate content from design by using authoring and presentation templates.

2 Search. Simple and advanced search functionality and the My Items view ensure that you can quickly find and work with Web content.

3 Libraries. Use automatic versioning and new library capabilities to organize content just the way you want.

4 Personalization. Use Web Content Management with Personalization to present the right information to the right people -- where and when they need it.

5 Task bar. Access common tasks quickly from the task bar. Use tabs to work with multiple content items when you create, edit, delete, and preview.

6 Simplified authoring environment. Anyone can quickly and easily create, edit, and publish content on the site.

Web Content Management enables end-to-end content creation, approval, management, retention, and publishing across Internet, intranet, extranet, and site assets. By leveraging content in back-end systems, Web Content Management reduces development and implementation time and ensures "author once, publish everywhere" control.

Home Administration Documents Web Content Messaging Site Map

Get Started Now

Need Help?
Go to the IBM Information Center. The information center has complete and in-depth product information.

Try IBM developerWorks developerWorks features articles about various topics related to IBM WebSphere Portal.

Need Support?
IBM Software Support

IBM Newsgroups

Need More Information?
Get additional information and product news. Visit the IBM WebSphere Portal home page

Other Links
IBM.com
IBM Software Home Page
IBM WebSphere
IBM Software Support
WebSphere Portal Zone
Partner World
Linux at IBM

Other Web Content Management Enhancements

- **Improved Site Scalability**

- Library Sections can be created and updated separately to support specific site areas, making it easier to keep large, dispersed websites up-to-date
- WebSphere Clustering Support ensures demand on servers is distributed more effectively

- **Greater “Look and Feel” Flexibility for sophisticated websites**

- Enhanced Cascading Style Sheets (CSS) support enables designers to not only define the overall look & feel of the site, but also create specific designs for different site areas, user profiles, or individual content items

- **Protection against broken links**

- New Link Management ensures all internally referenced website links will be up to date (e.g. "live" and not "broken")

- **Simplified Administration**

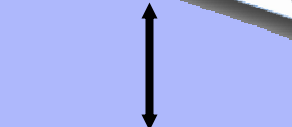
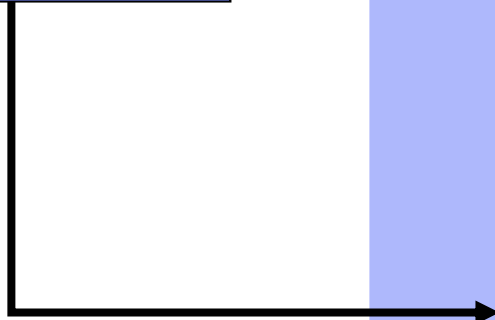
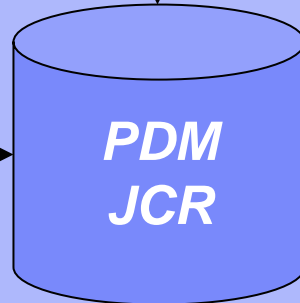
- Integrated administration within Portal – no need to learn a different UI or administer from different location
- Uses Portal’s built-in Java Content Repository
- Unified access control for users and content objects
- WebSphere clustering support: Administration of multiple WCM servers as one
- Simplified cache and logging

Workplace Forms Integration with Portal

Workplace Forms Designer



Workplace Forms Viewer



Viewing a Form within Portal Document Manager

Documents

IBM Workplace Forms

Document Manager [?] [-] [□]

[Back to folder](#) | [Previous document](#) | [Next document](#)

Mortgage Pre-Approval.xfd

Description

Mortgage Pre-Approval.xfd

Created by: Cindy Neumann Created on: December 2, 2005 12:51:45 PM VET

Last modified by: Cindy Neumann Last modified on: December 2, 2005 12:51:45 PM VET

100%

Mortgage Pre-Approval Form

Steps

Mortgage Requirements

Mortgage Details

Borrower Personal Data

Co-Borrower

Mortgage Requirements

Provide the following mortgage information:

Mortgage Amount	<input style="width: 80%;" type="text"/>
Down Payment	<input style="width: 80%;" type="text"/>
Interest Rate	<input style="width: 80%;" type="text"/> %
Payment Frequency	<input style="width: 80%;" type="text"/> ▼
Amortization Period	<input style="width: 80%;" type="text"/> ▼ Years
Start Date	<input style="width: 80%;" type="text"/>

Mortgage Calculator

Calculate Monthly Payment

1. Purchase Price

2. Down Payment % OR

3. Interest Rate % 4. Amortization Period ▼ Years

5. Calculate Monthly Payment

IBM WebSphere Portal Version 6.0

1

Improves efficiency and productivity

2

Accelerates application and content deployment

3

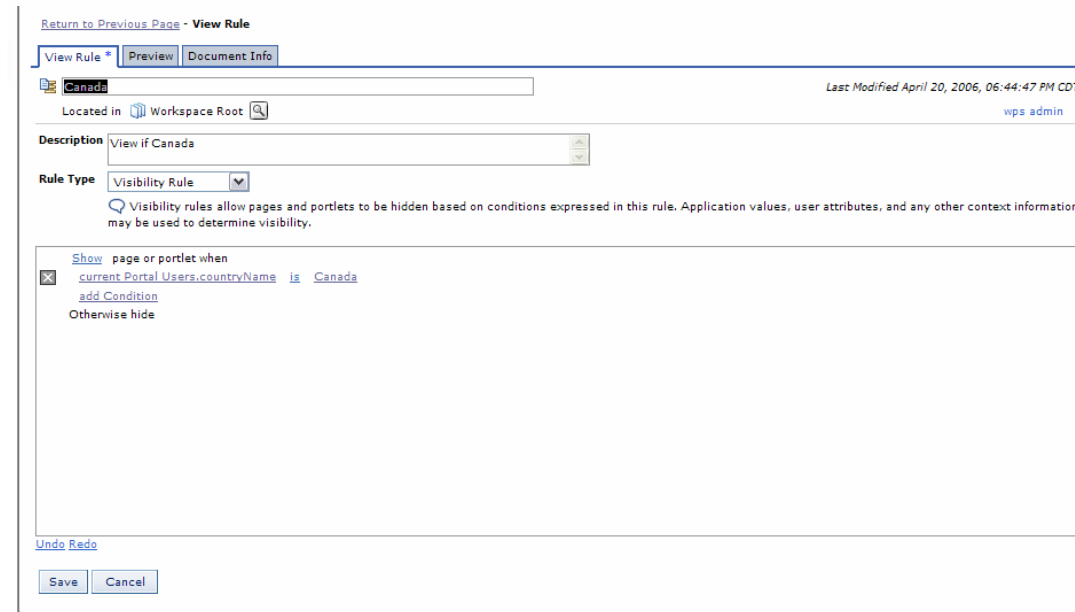
Delivers responsiveness and reliability at lower cost

Advanced Personalization

- **Administrators can apply “Personalization rules” to both portlets and portal pages**
 - Use of Business logic to provide “dynamic” experience
 - Ex. Show HR Benefits Page during enrollment period



- **Business Value**
 - Granular Personalization
 - Further map the business requirements to the Portal
 - Ex. Marketing campaign
 - Modify portal based on what time of day the user is looking at the page



Policy

- **Introduce policy as part of the programming model**
 - Policy is a globally scope set of values for a given group of users
 - For example: maximum document storage used
- **Admin interface for setting system wide “policy sets”**
 - Default Policy Set
 - Policy Set for groups of users
- **Enables site-wide personalization of applications, content, and look and feel**

Workplace Policies

Edit Properties

Set the conditions and actions for the workplace application policy.

* Name:	
Default Workplace Application Policy	
Maximum workplace application size:	
<input type="radio"/> No limit	
<input checked="" type="radio"/> Limit	60 MB
<input type="checkbox"/> Send warning message at	60 %
Send warning message when maximum workplace application size is exceeded to:	
<input type="checkbox"/> Administrator	
<input checked="" type="checkbox"/> Moderators	
<input type="checkbox"/> Members	
<input checked="" type="checkbox"/> Display warning message in Home page of application.	
Length of time to keep after no activity:	
<input type="radio"/> No limit	
<input checked="" type="radio"/> Limit maximum days with no activity to	90 days
<input type="checkbox"/> Send warning message after	days
Send warning message for maximum days with no activity to:	
<input type="checkbox"/> Administrator	
<input checked="" type="checkbox"/> Moderators	
<input type="checkbox"/> Members	

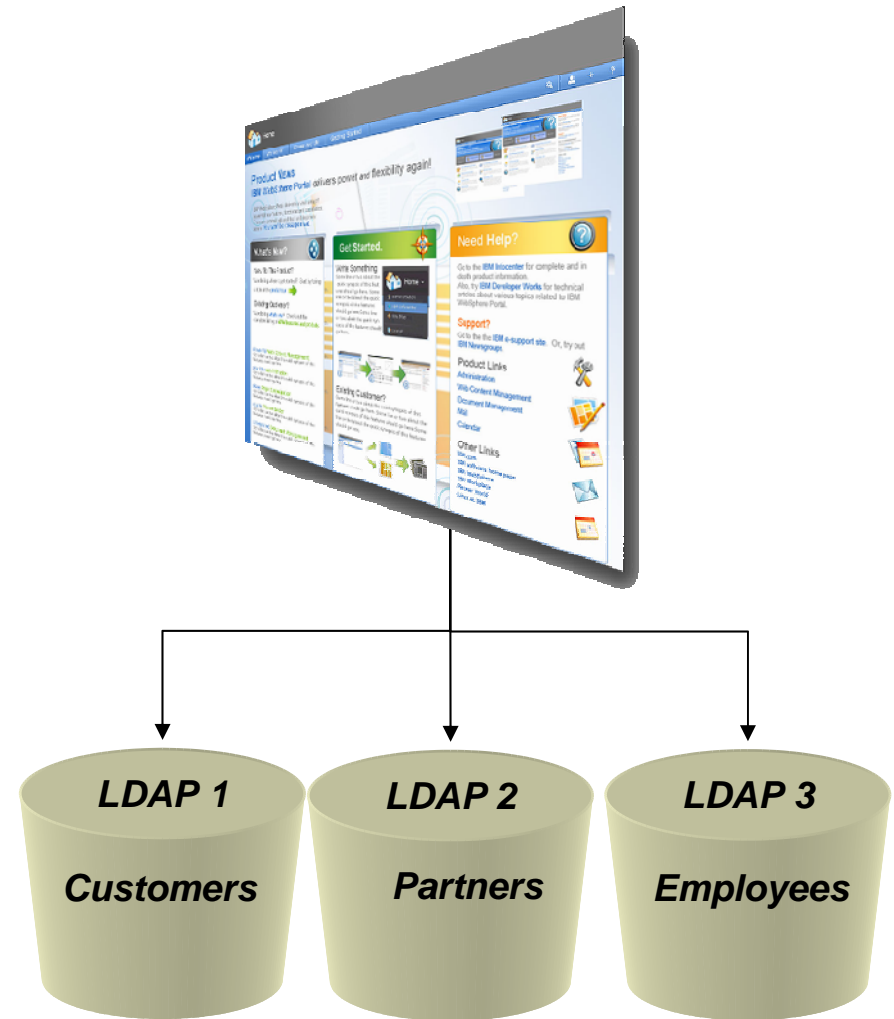
Multiple LDAP Binding

■ Multiple LDAPs

- Can bind to multiple LDAP directories

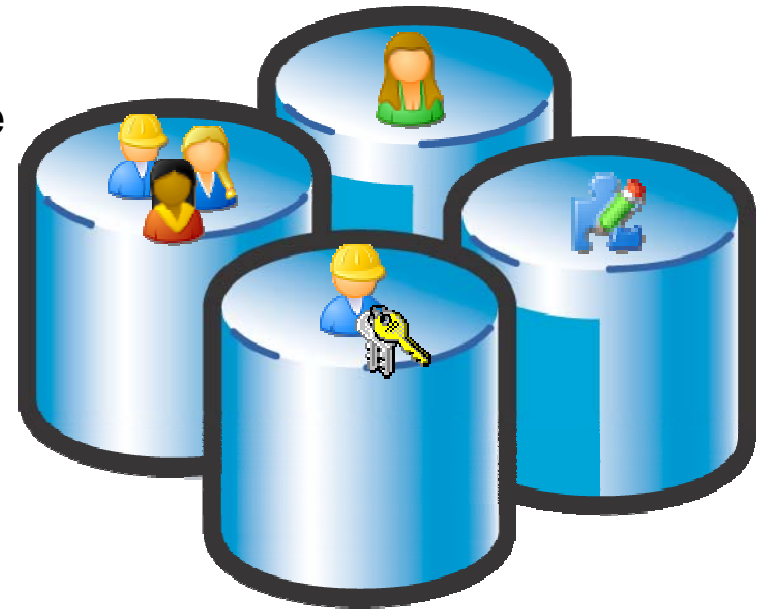
■ Business Value

- Flexibility for different customer environments
- Reduces the need to customize the “Member Manager” or a Tivoli Directory Integrator
- Reuse Portal deployments both inside & outside firewall Including Virtual Portals



Portal Configuration Split

- **Partition Portal configuration data into 4 logical buckets**
 - Configuration data: Class files and property files, etc.
 - Release data: portal pages and the portlet instances + default modes & state
 - Customization data: portlet data (user data)
 - Community data: WCM, PDM, application instances
- **Business Value**
 - Allows for easier 24/7 maintenance, upgrades, back ups & restores
 - Preserves end-user customization during portal cluster upgrades
 - Enables global deployment (with replicated user data)



Performance Focus Areas

- **Improve computation during request processing**
 - Supports Portal sites with over 30000 pages
 - Caching context in session
 - Reuse already computed results and objects
 - Reduce DB calls

- **Better linear scaling by adding CPUs**

- **Performance Best Practices**
 - Provide guidance for design regarding tradeoffs so that customers know what they have to give up in order to scale

