



IBM SOA PoT

Day 2



10 July, 2008

SOA Proof of Technology



IBM SOA PoT

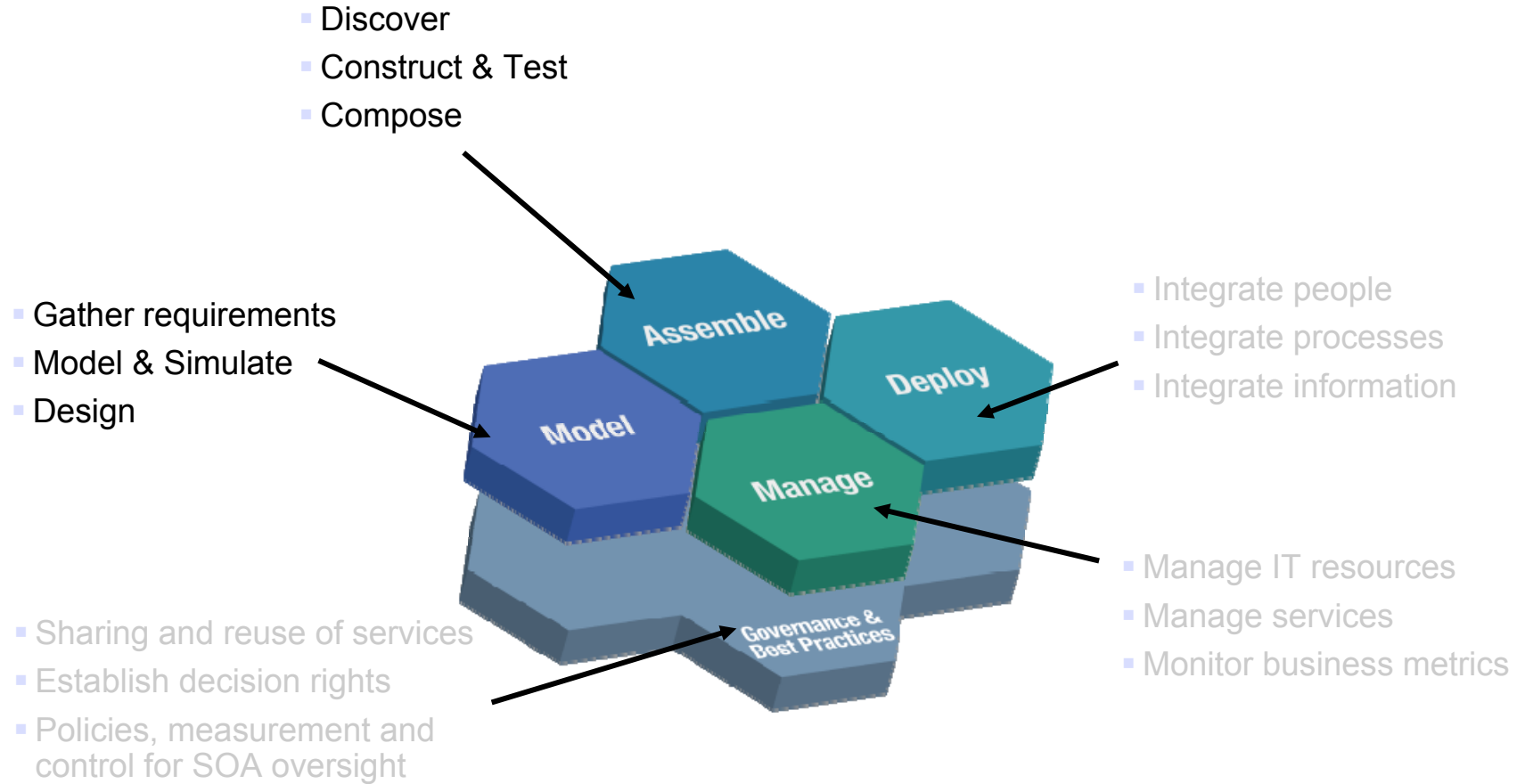
Day One Re-Cap



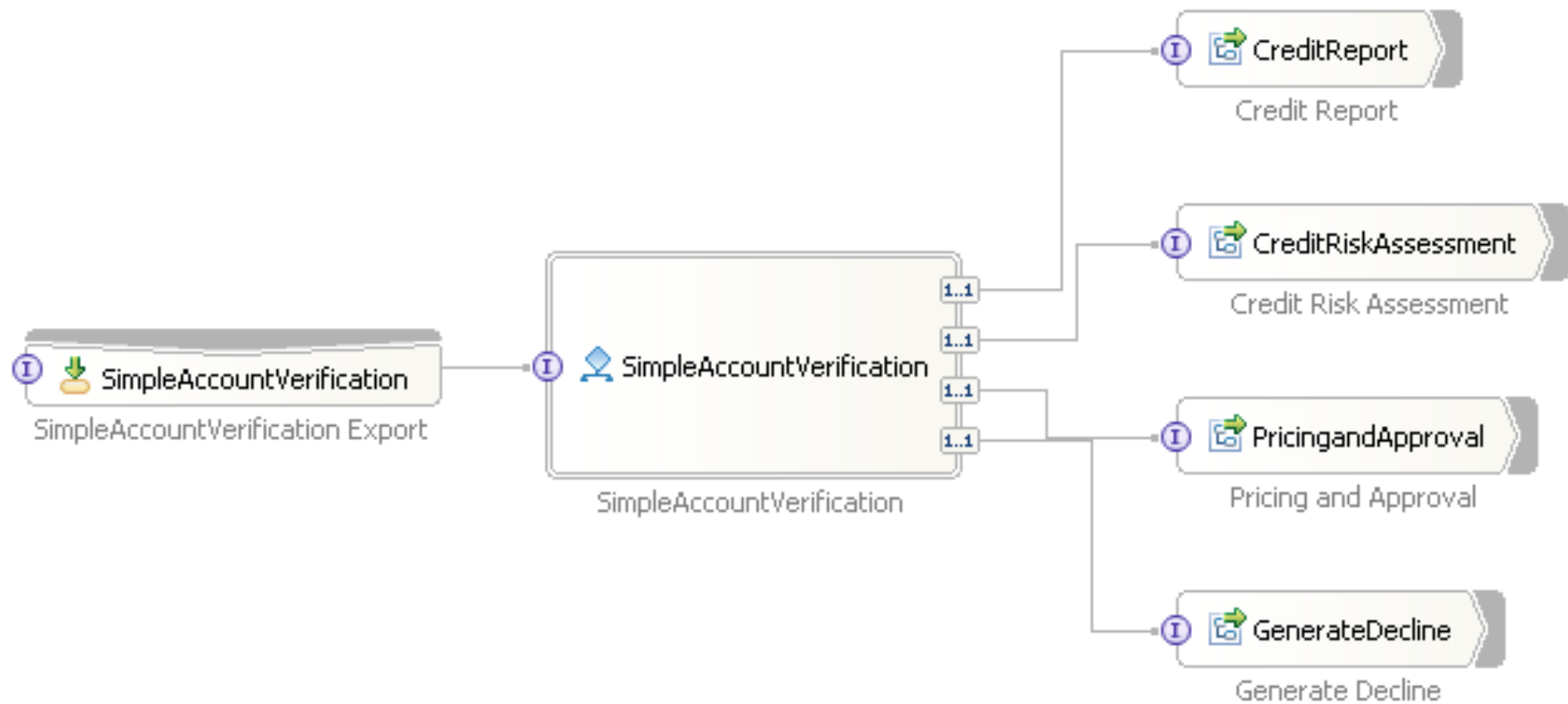
The business-driven development lifecycle



SOA Lifecycle (Went through Model and Assembly)

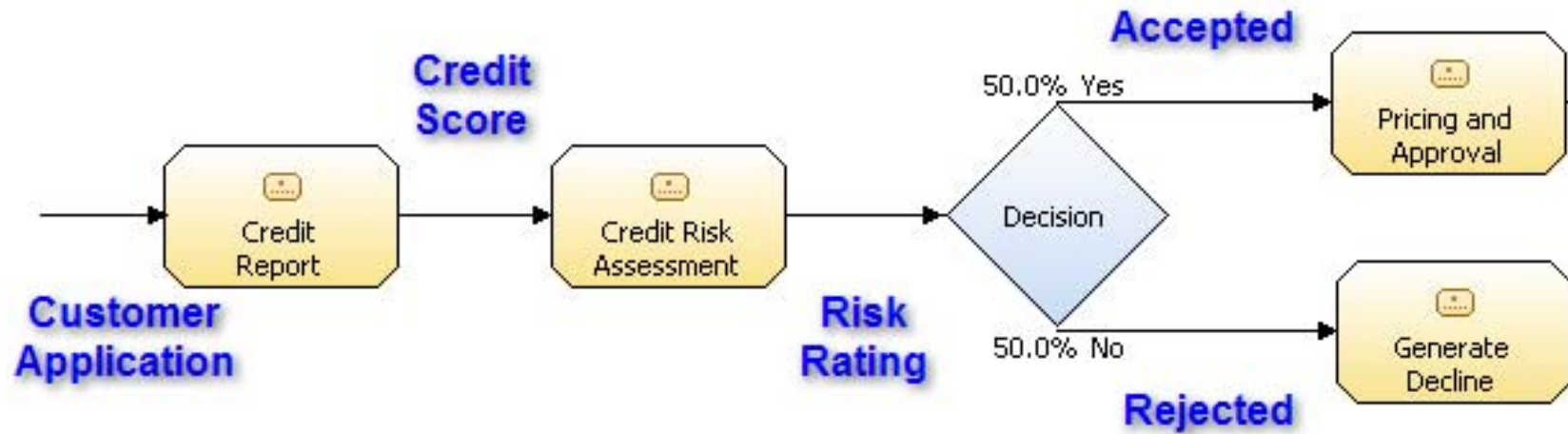


Worked with the Assembly Diagram of the Example Process

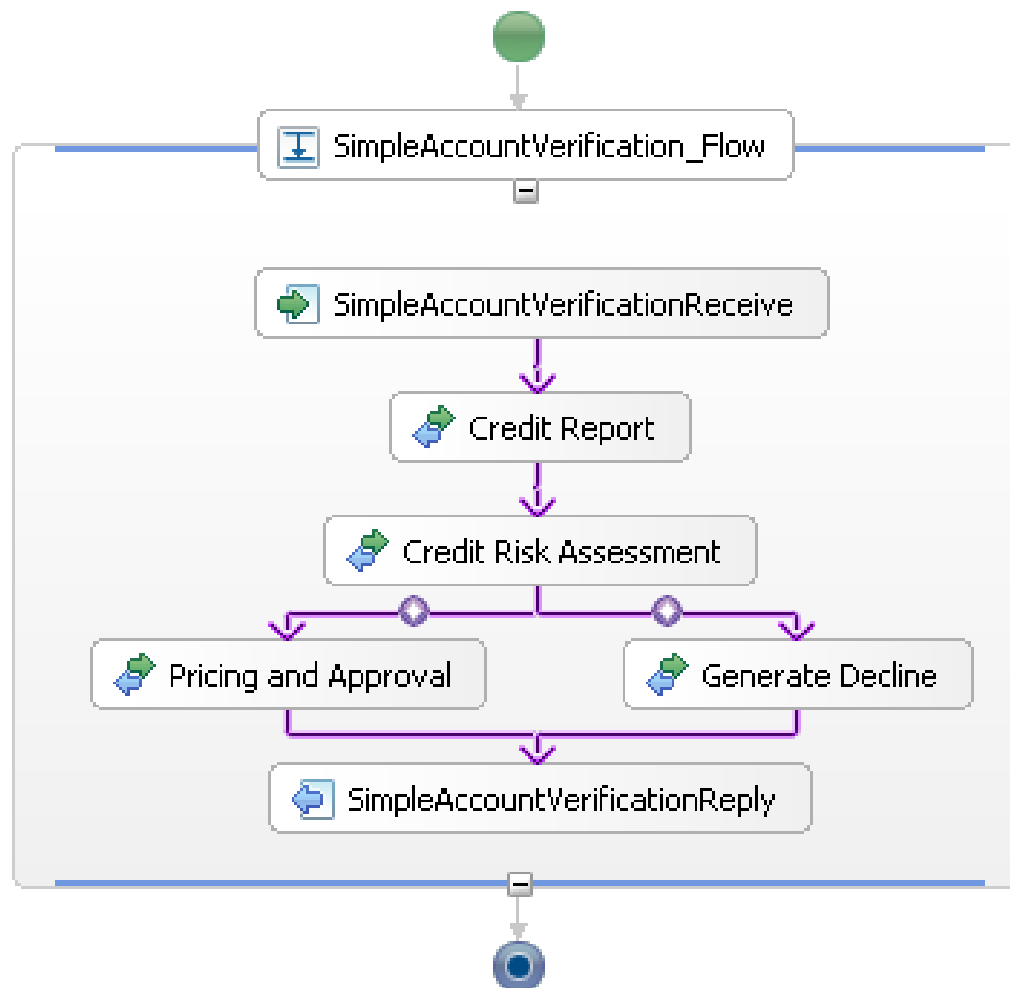


Did the Modeling of the Example Process

Simple Account Verification Model



Worked with the Process Diagram of the Example Process



Did 5 Labs

- Model, assemble, and implement from the ground up
- Perform governance through all phases
- Perform continuous process improvement

- **Lab 1 - Promote Standards and Initiate Governance**
- **Lab 2 - Model the Business Process**
- **Lab 3 - Apply Governance to Process Lifecycle**
- **Lab 4 - Assemble and Deploy the Process**
- **Lab 5 - Publish Service Interface for Reuse**
- Lab 6 - Explore a Web Service Endpoint
- Lab 7 - Change Service Implementation
- Lab 8 - Externalize Business Rules
- Lab 9 - Modify the Process Choreography
- Lab 10 - Incorporate Human Tasks
- Lab 11 - Add New Service Providers
- Lab 12 - Provide Flexibility with an Enterprise Service Bus
- Lab 13 - Service creation
- Lab 14 - Information as a service
- Lab 15 - Monitoring
- Lab 16 - Dashboards



IBM SOA PoT

Today – Day Two



What are we doing today ?

- **Add Web Services as End-points**
- **Use a Business Rule**
- **Look at Human Tasks**
- **Introduce the Enterprise Service Bus**
- **Use the ESB to Dynamically Select Service End-Points**

Labs for Today

- Lab 1 - Promote Standards and Initiate Governance
- Lab 2 - Model the Business Process
- Lab 3 - Apply Governance to Process Lifecycle
- Lab 4 - Assemble and Deploy the Process
- Lab 5 - Publish Service Interface for Reuse
- **Lab 6 - Explore a Web Service Endpoint**
- **Lab 7 - Change Service Implementation**
- **Lab 8 - Externalize Business Rules**
- **Lab 9 - Modify the Process Choreography**
- **Lab 10 - Incorporate Human Tasks**
- **Lab 11 - Add New Service Providers**
- **Lab 12 - Provide Flexibility with an Enterprise Service Bus**
- Lab 13 – Service creation
- Lab 14 – Information as a service
- Lab 15 – Monitoring
- Lab 16 - Dashboards