

IBM Lotus Sametime 7.5.1

Highlights

- **Make finding, communicating and meeting with people faster and easier with integrated IM, presence awareness and Web conferencing capabilities**
- **Help keep conversations and company data confidential and protected with advanced security features**
- **Connect with people outside the organization using public IM networks**
- **Simplify communications with multiway VoIP**
- **Hold video sessions from your desktop with new point-to-point video capabilities**
- **Participate in IM sessions and Web conferences from Microsoft Windows, Apple Macintosh or Linux desktops**
- **Use Web conferencing to hold easy, more productive meetings with geographically dispersed colleagues and business associates**
- **Converge voice, data and video capabilities onto a unified communications and collaboration platform to help simplify IT and increase returns on investment**

IBM Lotus® Sametime® software is an award-winning, unified communications and collaboration platform that helps you quickly find, connect to and communicate with people, no matter where they are. The solution also provides built-in capabilities such as:

- *Presence awareness to help you determine who's online and available, so you can find the people you need, fast.*
- *Enterprise instant messaging (IM) capabilities to help you contact people more quickly than through e-mail and less expensively than by telephone.*
- *Web conferencing that enables you to meet with people in advance or on the fly, and share documents or brainstorm ideas without the hassle and expense of travel.*



New point-to-point video capabilities let you see who you're chatting with, helping to build stronger, more personal relationships.

IBM Lotus Sametime 7.5.1 software builds on these proven capabilities, while delivering advanced security features, new and creative ways for people to connect and the flexibility to choose the best technology platforms for your business.

Share information confidentially with advanced security features

Lotus Sametime software can encrypt all IM, Voice over Internet Protocol (VoIP) voice chat and point-to-point video conversations to help you protect sensitive information. Enterprise-to-enterprise Lotus Sametime IM conversations can also be encrypted, to help keep discussions with clients and business partners confidential. Authentication gives you the confidence of knowing that the people you communicate with are who they say they are, while password protection helps ensure that only invited participants have access to Web conferences. You also can make a Web conference invisible to anyone who views the scheduled meeting list on the Lotus Sametime server.

Communicate the way you want

Lotus Sametime 7.5.1 software delivers a variety of IM features designed to help you communicate and collaborate in the most appropriate and productive way.

For instance, interoperability with popular public IM networks makes it easy to chat with external business contacts. Or when you need to talk to a colleague, built-in VoIP lets you conduct a PC-to-PC voice conversation with other Lotus Sametime software users, and new point-to-point video capabilities can let you see your chat partner. To quickly communicate visual information, you can embed a snapshot of a portion of your computer screen directly in an IM and, new with Lotus Sametime 7.5.1

software, you can annotate a screen grab before sending it. These features create a more personal collaboration experience and can help reduce communications costs.

To manage multiple conversations, the new tabbed chat feature in Lotus Sametime software lets you consolidate chats into one organized window, so you can more easily move between conversations and reduce desktop clutter. The chat history feature lets you store and view a record of conversations, enabling you to revisit information when needed. Spell check is also available for chats, and an array of emoticons helps you make sure your messages are read in the spirit they were written. Also new in Lotus Sametime 7.5.1 is the ability to initiate chats or Web conferences from Microsoft® Outlook and Microsoft Office software without leaving your in-box or the documents on which you're working—capabilities long available to users of IBM Lotus Notes® applications.

Find people more quickly and improve responsiveness

The accelerating speed of business drives the need for people to find experts and information quickly. When employees can find what they're looking for, they can make better, more informed decisions.

Whether you use an Apple Macintosh computer, or Microsoft Windows® or Linux® technologies, Lotus Sametime 7.5.1 software helps make finding people—and the answers you need—faster and easier. You can see the contact information of a person, pulled from your corporate directory, by hovering your cursor over a name. The

information can include the person's picture, job role, function and more, providing a "face" to a colleague that you haven't met before, and helping to establish better, more personal relationships between geographically dispersed team members and associates.

Type-ahead contact search makes it easy to find contacts, surfacing names as you enter them. You can also add predefined public groups to your contact list, rather than having to add group members one by one, saving you time and helping you keep your contact list current.

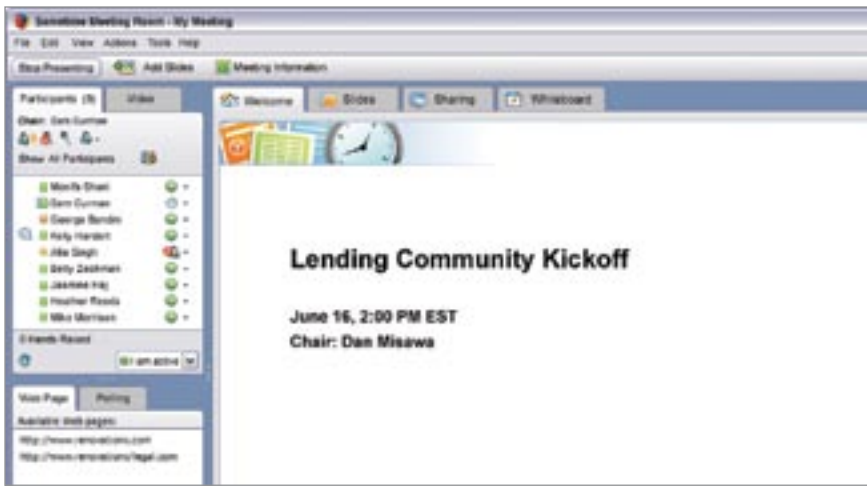
Minimize interruptions while remaining available to people who need to reach you. With a selective privacy feature, you can choose to whom you want to appear available, such as immediate team members or your manager. And alerts can immediately notify you when a contact becomes available.

Close distances between people with Web conferencing

Lotus Sametime Web conferencing capabilities give people a fast, easy and cost-effective way to meet without wasting time or money on unnecessary travel.

Lotus Sametime 7.5.1 software lets you:

- *Schedule, manage and attend meetings on the fly or in advance.*
- *Upload presentations or enable meeting attendees to see your desktop live, so you can share applications and demonstrations. You can also give control of your desktop to other participants so they can make real-time updates.*



With Web conferencing capabilities, you can meet and share presentations, applications and desktops as if everyone were in the same room.

- Hold group chats to share feedback and ideas, or privately IM with other participants.
- Push Web sites to participants' desktops to support discussions and ideas.
- Conduct polls to drive faster decision making and use a whiteboard feature to visually communicate.
- Use integrated audio and video to enhance the meeting experience.
- Let the help desk take control of a user's computer, for faster and easier technical support.
- Take control of your meeting environment and manage expenses better with an alternative to pay-as-you-go or hosted Web conferencing.

With Lotus Sametime 7.5.1 software, you have more options for scheduling and attending meetings. And now you can use your Apple Macintosh,* Linux software-based or Microsoft Windows desktops to participate

in meetings. You can also schedule meetings from Lotus Notes and Microsoft Outlook software, or start an instant meeting from the Lotus Sametime Connect client or from Microsoft Office, Lotus Notes or Microsoft Outlook environments. Once a meeting has been scheduled, Lotus Sametime software can automatically send an e-mail with the meeting's URL, time, date and password to the meeting moderator.

Unify your communications and collaboration capabilities

With Lotus Sametime 7.5.1 software, IBM delivers a complete, unified client experience that can converge voice, data and video technologies onto a single, flexible communications and collaboration platform, even if your environment contains telephony,

New in this release

- Point-to-point video
- Tabbed chat
- Linux server support
- Macintosh IM client and Macintosh participation in Web conferences
- Microsoft Office integration
- Microsoft Outlook integration
- Calendar availability integration
- Enhancements to IM, such as screen capture annotation, simplified add-user process and easier plug-in management
- Enhancements to Web conferencing, including faster meeting startup, edge-to-edge full screen view and streamlined click-to-present capabilities
- Primary contacts plug-in
- Chat history search
- Enhanced policy control
- Enhancements to IBM Lotus Sametime Gateway and IBM Lotus Sametime Mobile software
- E-mail confirmation when scheduling Web conferences



audio or video solutions from multiple vendors. Leading telephony, audio and video providers are integrating with Lotus Sametime software so you can take advantage of additional capabilities such as:

- *Click-to-call and click-to-conference capabilities.*
- *Call management.*
- *Aggregated telephony presence.*
- *Voicemail access.*
- *Softphone integration.*
- *Web conferencing audio integration.*

Integrate your existing business applications for more value

Lotus Sametime 7.5.1 software provides an extensible client that leverages open standards, making it easy to integrate your existing software solutions or business applications or to deliver entirely new real-time applications for your company.

For additional innovative capabilities or to surface existing software or capabilities inside of the Lotus Sametime client, turn to the IBM Business Partner community. And an online plug-in catalog that lists specific solutions from Business Partners makes it fast and convenient to find exactly the right solution for your organization.

Put your trust in a marketplace-leading solution

Lotus Sametime 7.5.1 software delivers the features and capabilities organizations need to support their communications and collaboration strategy. The flexibility and control to deploy across single or multiple client and server environments. A managed environment that enables internal and external people, such as partners, clients and suppliers, to collaborate when and where they want. Security features that businesses require, such as encryption and authentication, to help keep information safe and protected. And creative, innovative and flexible communications and collaboration capabilities that help people find, reach out to and collaborate with each other.

For more information

To learn more about IBM Lotus Sametime software, please visit:

ibm.com/lotus/sametime

To view the online catalog for IBM Lotus Sametime software, please visit:

ibm.com/lotus/solutionscatalog-sametime

© Copyright IBM Corporation 2007

Lotus Software
IBM Software Group
One Rogers Street
Cambridge, MA 02142
U.S.A.

Produced in the United States of America
04-07
All Rights Reserved

IBM, the IBM logo, Lotus, Lotus Notes, Notes and Sametime are trademarks of International Business Machines Corporation in the United States, other countries or both.

Microsoft and Windows are trademarks of Microsoft Corporation in the United States, other countries or both.

Linux is a registered trademark of Linus Torvalds in the United States, other countries or both.

Other company, product and service names may be trademarks or service marks of others.

References in this publication to IBM products or services do not imply that IBM intends to make them available in all countries in which IBM operates. The information contained in this documentation is provided for informational purposes only. While efforts were made to verify the completeness and accuracy of the information contained in this documentation, it is provided "as is" without warranty of any kind, express or implied. In addition, this information is based on IBM's current product plans and strategy, which are subject to change by IBM without notice. IBM shall not be responsible for any damages arising out of the use of, or otherwise related to, this documentation or any other documentation. Nothing contained in this documentation is intended to, nor shall have the effect of, creating any warranties or representations from IBM (or its suppliers or licensors), or altering the terms and conditions of the applicable license agreement governing the use of IBM software.

*A Microsoft Windows or Linux software-based platform is required to share applications or participate in audio/video Web conferences.