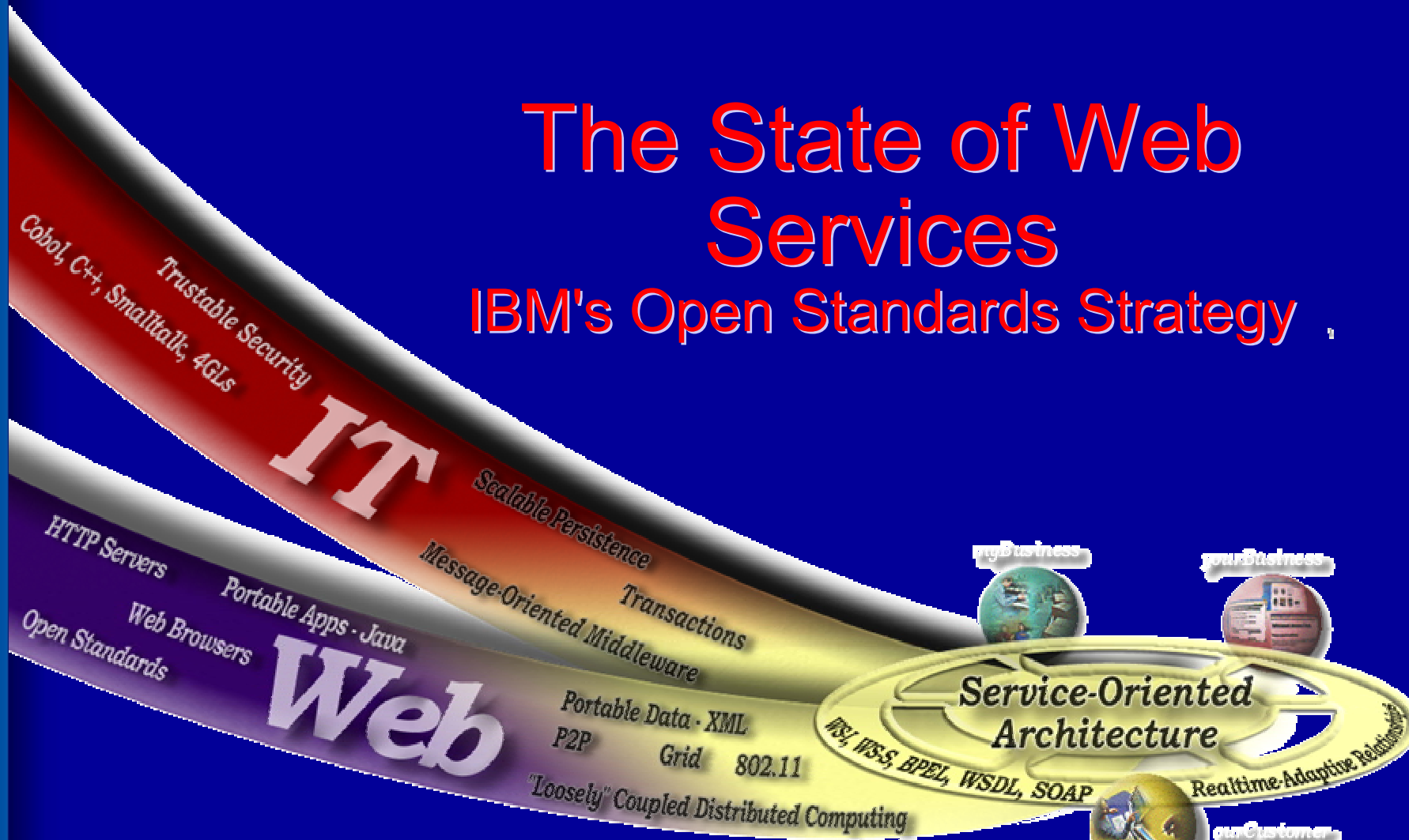


Rod Smith

IBM, VP Emerging Internet Technologies

The State of Web Services

IBM's Open Standards Strategy



what are web services all about?

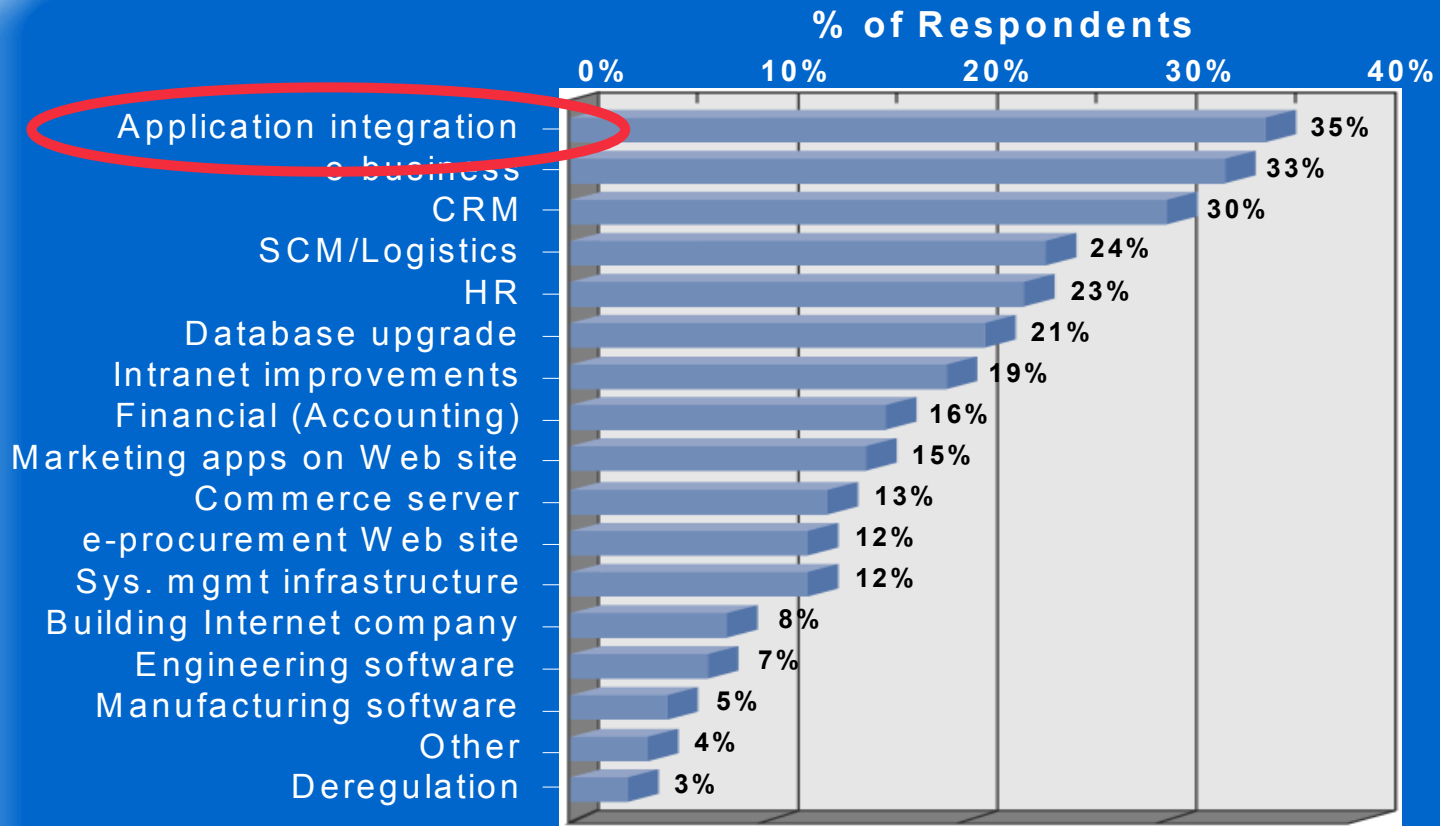
- *massive automation of business processes*
- *time-to-market business integration*
- *technical evolution...business dictate the pace of technology adoption*
- *repurposing existing “unique” IT assets to gain business advantage through new collaborations*

... the ability to change is more important than the ability to create...and the velocity of change is only going to increase.

Peter Fingar, The Death of e and the birth of the Real New Economy

web services-the ability to integrate

Software Globalization



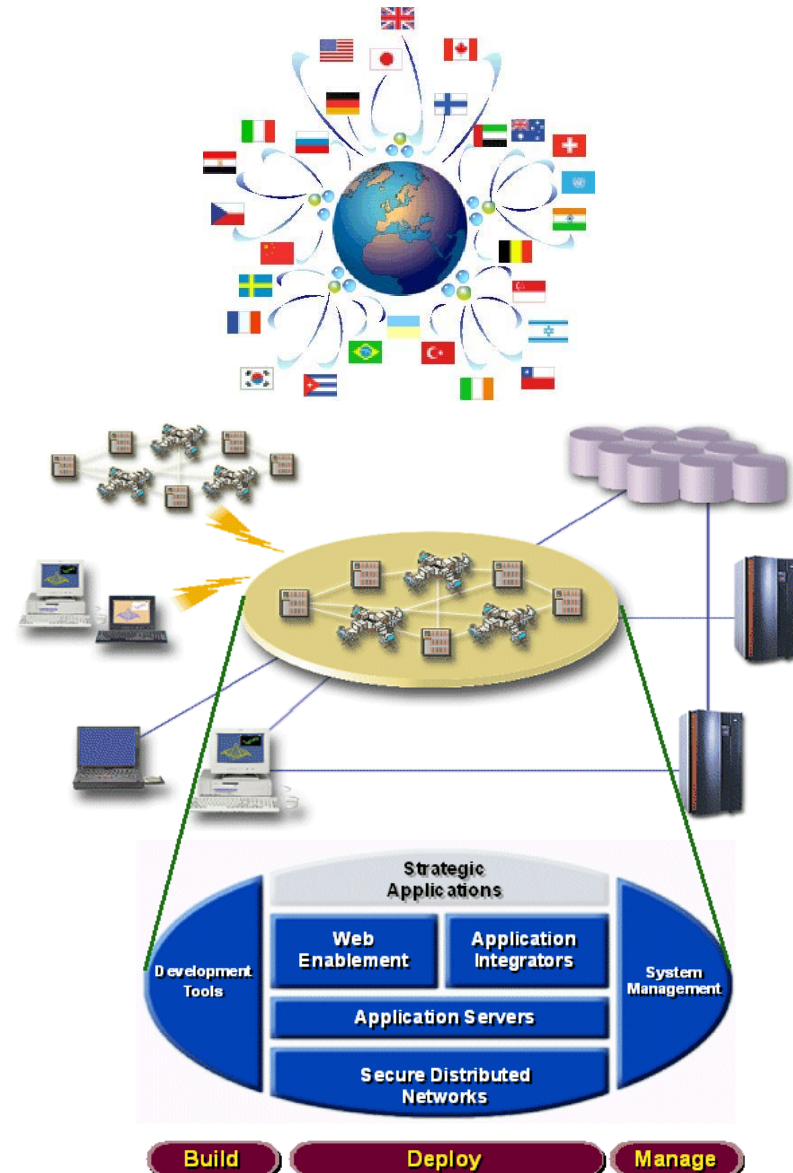
Source: Morgan Stanley CIO Survey, May 2001
Note: Multiple responses permitted

***Integration now is synonymous
the ability to change rapidly***

what's driving this?

Software Globalization

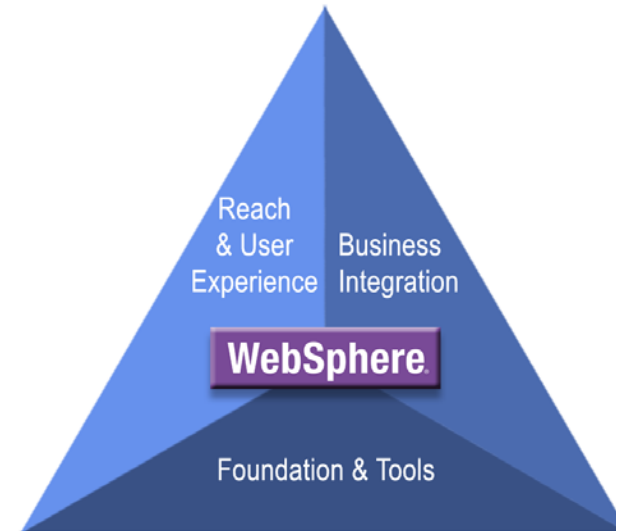
- “...I want to do business across the Internet with my customers, partners, and suppliers without having to know the intimate details of how they built their IT systems.”
- “...I want to integrate my custom and packaged enterprise applications using common tools, standards, and integration infrastructure, while not discarding my existing IT investments.”
- “...I want to enable my computing resources to be accessed and shared across a heterogeneous wide area network while delivering Qualities of Service transparently.”



but what's driving this?

Software Globalization

- Businesses around the world are not throwing away existing IT investments;
- Need evolutionary infrastructure technology to tie these systems together.
- Introducing new technology will not abate -- needs to work with & extend what we've got to make businesses work better – this is at the crux of *e-business*.
- A significant amount of knowledge from distributed systems, EDI, and the early XML will work to finally get this right and make it *standards* based.



customer example: DaimlerChrysler

DAIMLERCHRYSLER

“DaimlerChrysler’s strategy is to enable enterprise application integration through the use of open standards based technologies such as web services. IBM’s WebSphere products and tooling that support these standards and IBM’s integration experience with web services will enable us to rapidly build our skills and support business process owners who require distributed application solutions in addressing real world business needs.”

*Ik Kim,
Manager of eTechnology*

Location: Auburn Hills, MI

Industry: Manufacturing

URL: www.dcx.com

Challenge: Integrating business processes with business partners in automating manual tasks that required information lookup and exchange, resulting in delays and inefficient use of resources

Solution: Enable DaimlerChrysler and business partner employees to directly query information between companies’ backend systems in real-time, integrating process steps using web services with each participant playing the role of a web service consumer and web service provider.

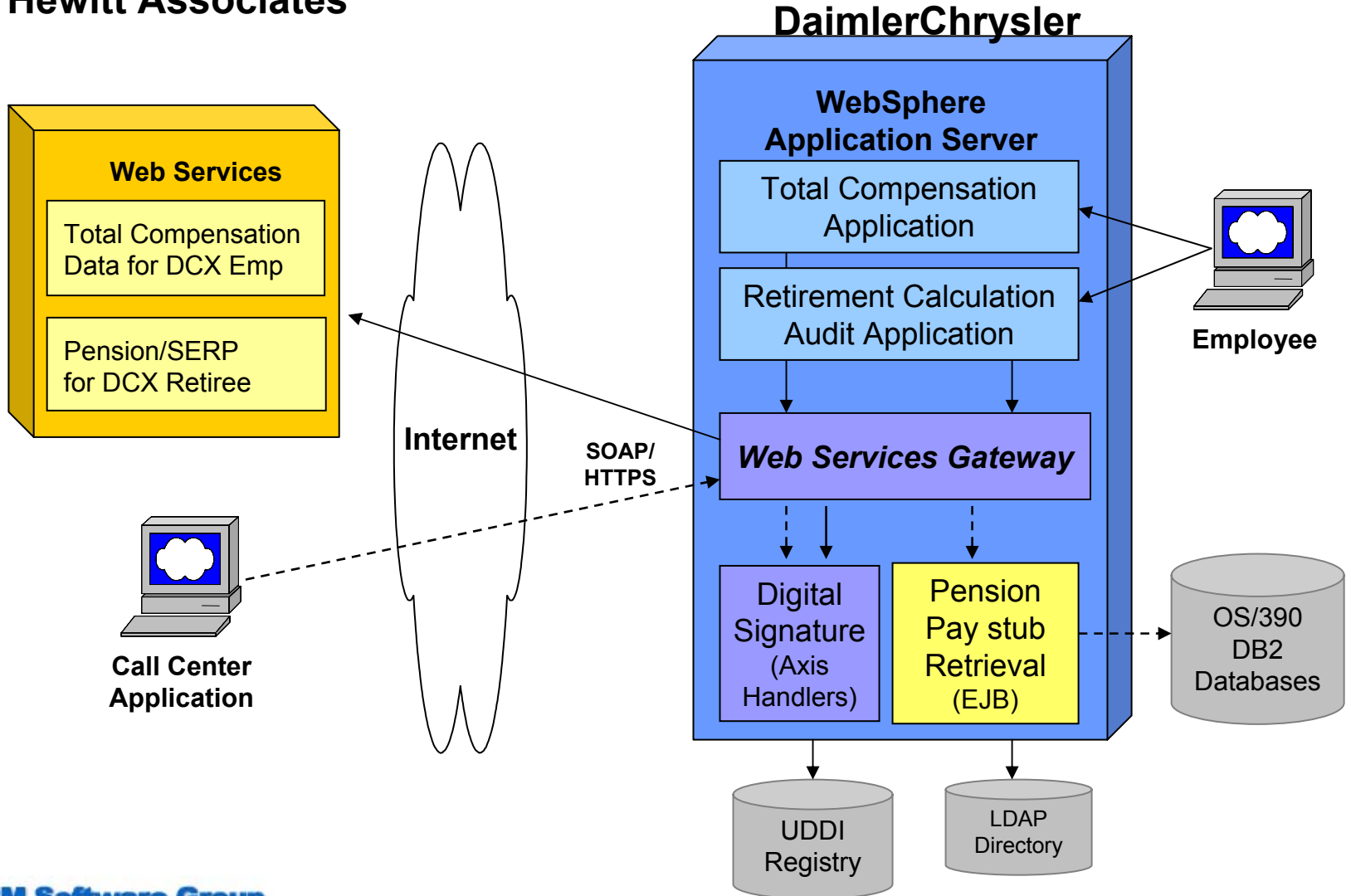
IBM Content: WebSphere Application Server, DB2, WebSphere Studio Application Developer, WSTK 3.2.2.

Value: Reducing operational costs as well as lowering costs of contracted services of their business partners. Better quality of service for employees (real-time access to information) enabling them to make better informed decisions.

customer example: DaimlerChrysler

DAIMLERCHRYSLER

Hewitt Associates



why is IBM investing?

Software Globalization



- This is the **FOREMAN**
- That placed the **Order**
- That went through the **Dealer**
- That notified **Contracts**
- That alerted **Manufacturing**
- That checked with **Accounting**
- That contacted **Shipping**
- That sent the **Delivery**
- That sealed the **Process**
- That lives in the **Business Integration Software**
- That we built **Together**

Moving away from a technology-centric approach to a dynamic business model world

Business Content is King!

The next “platforms” will be derived in business-centric contexts

Just-in-time integration of business partner software assets key

why is IBM investing?

Software Globalization



The Challenge!

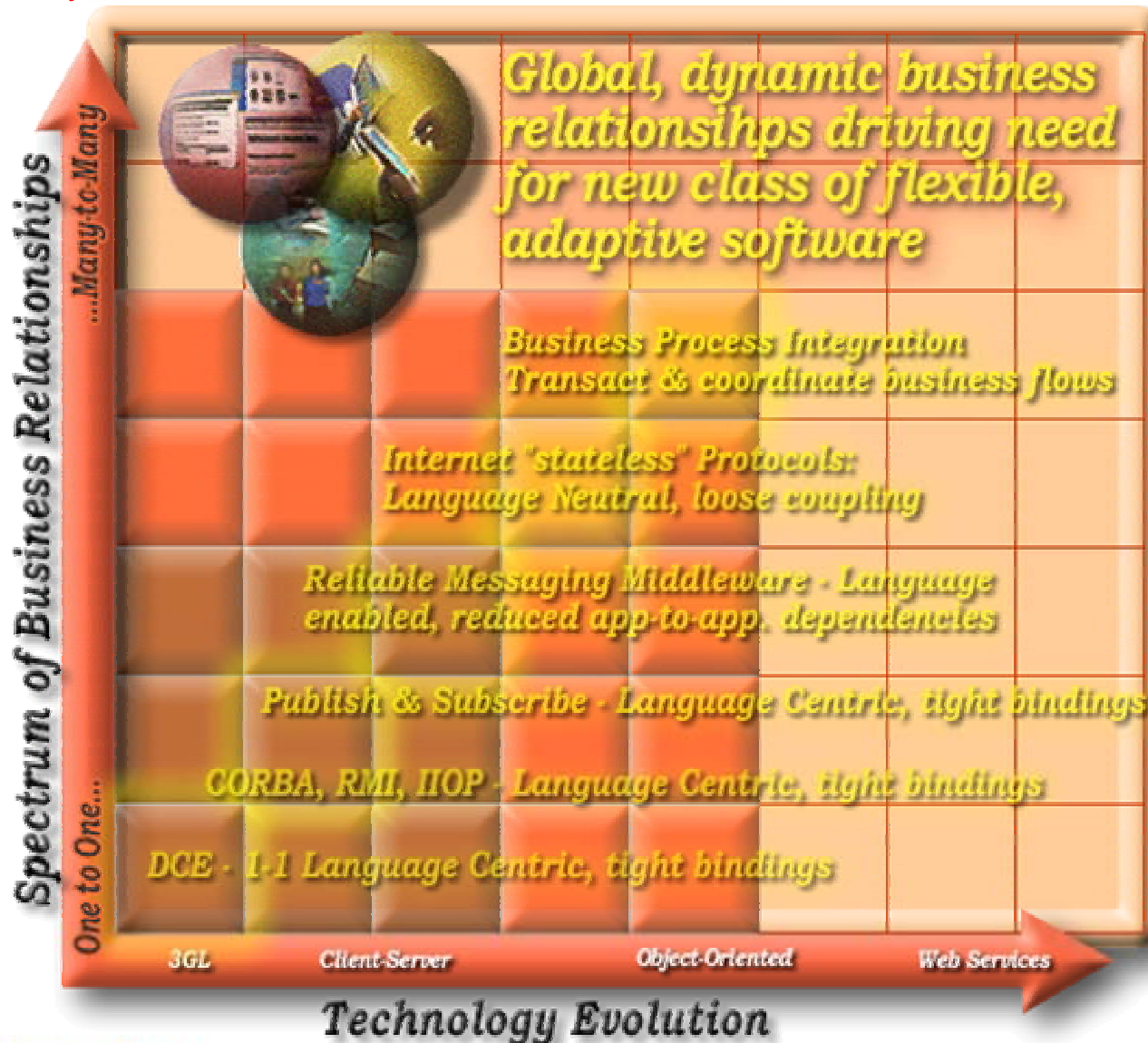
Empower the next generation of software assemblers by...

...creating "Ready to Assemble" middleware

...then season with reliability & scalability ingredients!

what's the impact to software design?

Software Globalization

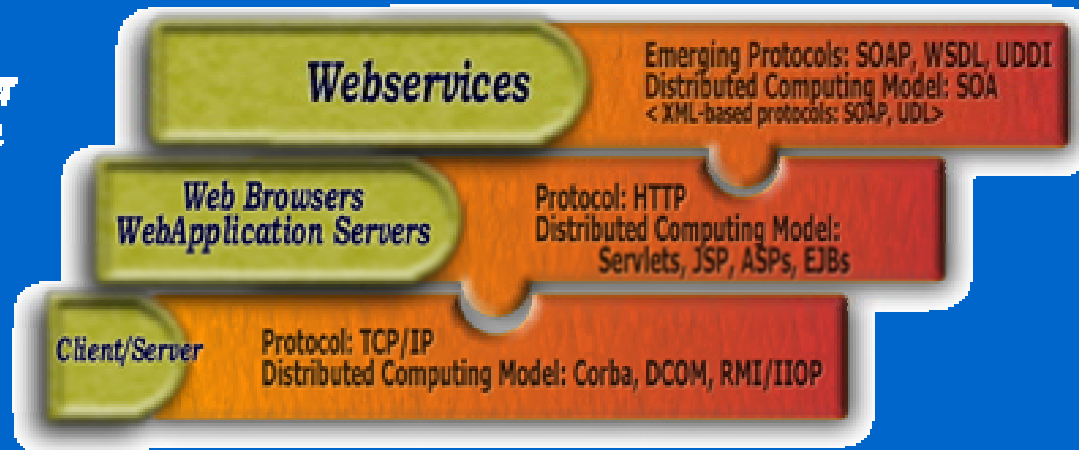


why the optimism ?

Web Services Technology Drivers

Every new widely adopted protocol layer ushers in a paradigm shift in distributed computing...

...and every major shift in computing architectures accelerates e-business growth



Ubiquitous Protocols Drive Change

Webservices protocol adoption will drive a similar large scale change

all this requires standards...and

Service Oriented Architecture

- SOAP submitted to the W3C in April, 2000, by 11 companies.
- WSDL submitted to the W3C in January, 2001, by 25 companies.
- W3C Web Services Workshop in April, 2001, attended by over 70 people.
- WS-I.org launched by 55 companies, 125 now members.
- UDDI.org membership topped 300 companies.
- WS-Security submitted to OASIS by 18 companies, now over 50 companies involved.



cultural change towards Standards

Software Globalization

**Timely, Reliable,
Sophisticated,
Technologies**

Linux

SOAP

**Huge Talent
Pool**

WSDL

Globus

**Developing
Standards**

**Driving
Innovation**

commitment to interoperability

Service Oriented Architecture

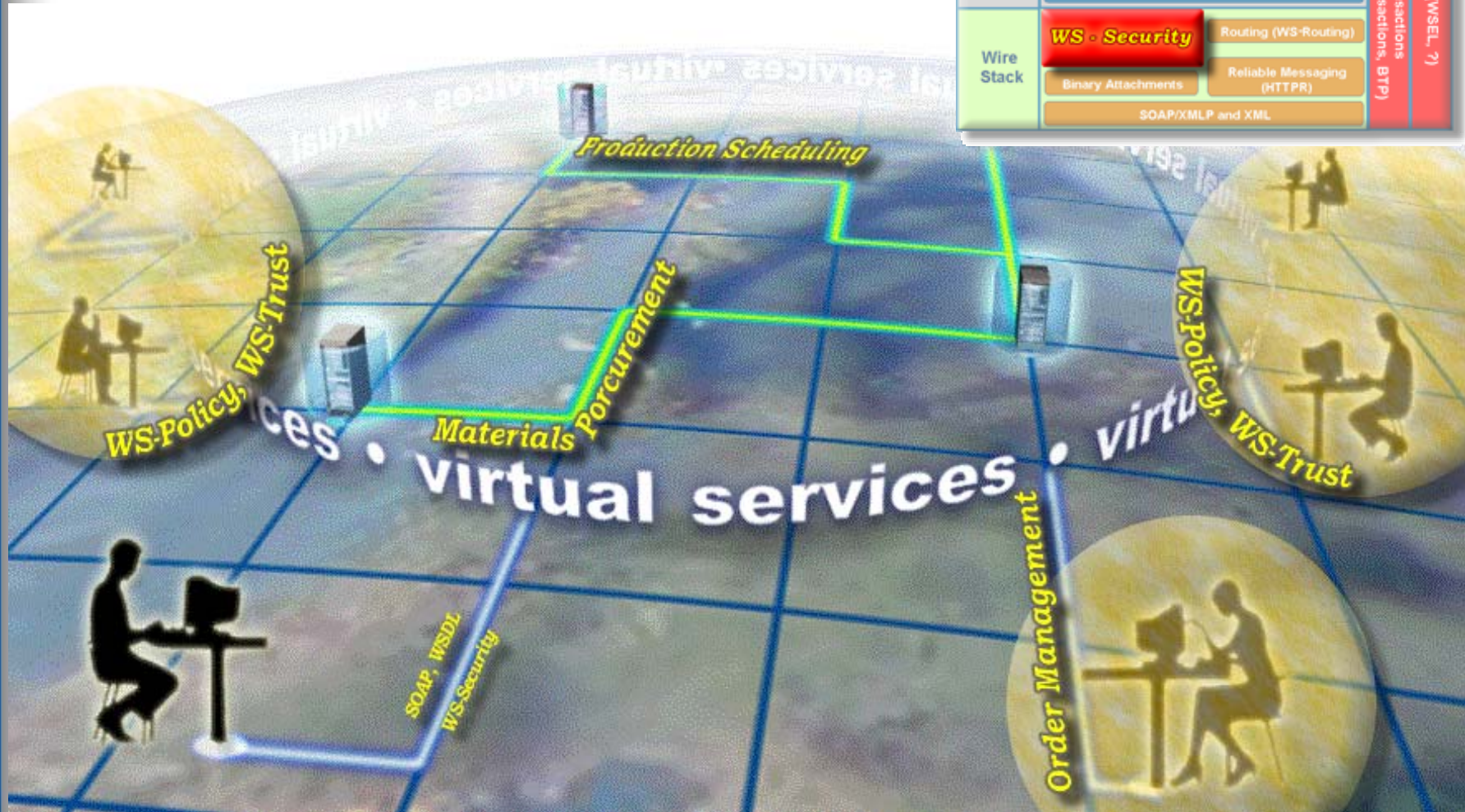
- WS-I.org, the *Web Services Interoperability Organization*, is providing clarity and guidance for
 - CIOs, CTOs and others making investment decisions who need to understand when tools, runtimes, and Web services themselves are compatible.
 - developers who wish to build Web services that use the underlying standards correctly and according to industry conventions
- While Web services standards and technologies enable interoperability, they do not guarantee it.
- The WS-I deliverables are profiles, common or best practices, scenarios, testing software, and testing materials.
- Since its launch in February, more than 120 companies have joined WS-I



why is security so important?

Service Oriented Architecture

Discovery Stack	Service Registry (UDDI, ebXML)		Transactions (WS-Transactions, BTP)	QoS (WS-EL, ?)
	Service Inspection (WSIL)			
Description Stack	Orchestration (BPEL4WS, BPML)			
	Message Sequencing (WS-Coordination)			
	Service Description (WSDL)	Service Attributes (WSEL)		
	XML Schema - XSD			
Wire Stack	WS - Security	Routing (WS-Routing)		
	Binary Attachments	Reliable Messaging (HTTPR)		
	SOAP/XMLP and XML			



what new business opportunities?

Software Globalization

**Network-Delivered
Applications**

**Business Process
Outsourcing**

**"Intelligent"
Services
Middleware**

**Hosting/
Bandwidth**

**e-commerce and
B2B Transaction
Services**

**Storage Utility
Services**



new company opportunities

Next Generation Business Applications

Audience: Business Development

- "Realtime" Business Dashboards
- "Visual" Business Process Modeling
- User-rich Collaborative Process Experiences
- Business "Grids" - outgrowth of GGF-OGSA



Web Services Composition

Audience: Architects & Developers

- Discovery, Assemble, Deploy
- Transform/Repurpose Existing Assets
- Create New & Publish
- Process Flow Composition



Web Services Execution Components

Platform Neutral Services

- Transactions & Reliable Messaging
- Security, Encryption & Authentication
- Provisioning [Metering, Manage, Audit]
- Process Coordination Engines
- UDDI (private)



how is IBM contributing?

Service Oriented Architecture



summary: the big change

Conclusions

IT in a “Post-Technology” World

it's about:

- globalization
- business flexibility
- agile, dynamic business collaborations
- on-demand computing: anywhere, anytime

On Demand
Computing
Mass Adoption

Network Computing
The Internet

Client/Server
PC's/LAN's

Mainframes
"The Glass House"

get started today

- Review the recommendations in today's presentations and the Giga Planning Assumption document –
<http://www.ibm.com/websphere/wstelecon>
- IBM Customer References –
<http://www.ibm.com/software/success> (select "Web services")
- Fusion, an interactive tool –
http://www-1.ibm.com/services/bis/fusion_down.html
- IBM jStart Program –
<http://www.ibm.com/software/jstart/>
- Web services by IBM –
<http://www.ibm.com/webservices>
- Web services Zone on IBM DeveloperWorks –
<http://www.ibm.com/developer>