



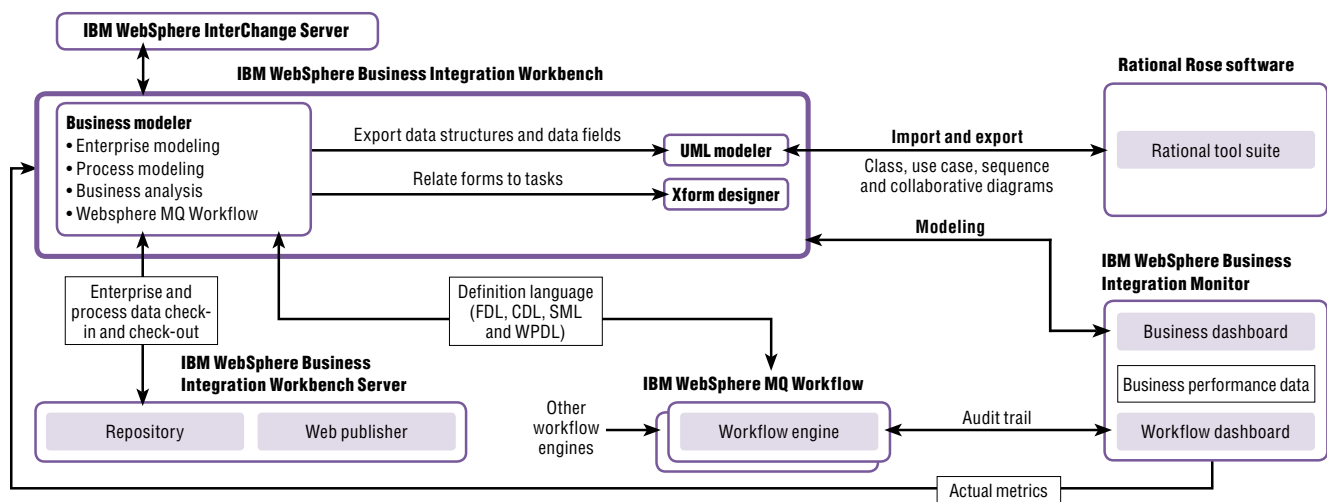
WebSphere® software

IBM WebSphere Business Integration Modeler, Version 4.2.3

Highlights

- **Captures important business processes and guidelines in one place for easy reference and companywide consistency**
- **Generates process performance metrics with more than 50 available reports or can export data to other software for customized reporting**
- **Helps model diagrams of current and new business processes with drag-and-drop capabilities and a simplified graphical interface**
- **Delivers facets and functions of business process analysis and business process engineering in one complete business process management solution**
- **Optimizes business outcomes by running scenarios to simulate processes before implementation**
- **Exports business process definitions to be automated with IBM WebSphere MQ Workflow**

Mapping your enterprise's business processes can be a daunting task. Communicating those processes and all they involve can be even more challenging. And when you're ready to automate your business processes, the inability to communicate your IT requirements for automation can derail the initiative up front. IBM WebSphere® Business Integration Modeler now provides line-of-business professionals with easy-to-use tools to design, test and communicate complex business processes. Simulate your processes' operational efficiency and analyze potential business results—all before committing resources to development and deployment.



IBM WebSphere Business Integration tools facilitate effective business process management, allowing you to design, implement and monitor key process workflows.

Redesign and simulate your processes and outcomes

WebSphere Business Integration Modeler lets you visualize your business processes and validate them before automation. Capture, analyze and redesign your company's business processes in activity decision flow diagrams that you can easily manage with an intuitive graphical user interface (GUI). View how processes will actually perform by simulating different business scenarios to test the range of possible outcomes before implementation. And document your process models with more than 50 included reports to fully illustrate process potential.

WebSphere Business Integration Modeler encompasses two products. IBM WebSphere Business Integration Workbench allows you to design and implement complex process workflows. IBM WebSphere Business Integration Workbench Server adds collaboration tools to test and refine these workflows.

Create and validate with full process modeling capabilities

WebSphere Business Integration Workbench offers a full range of business process modeling capabilities, from creation of process flow diagrams to validation of process outcomes. You can also export business process definitions to IBM WebSphere MQ Workflow (formerly MQSeries® Workflow) for automation.

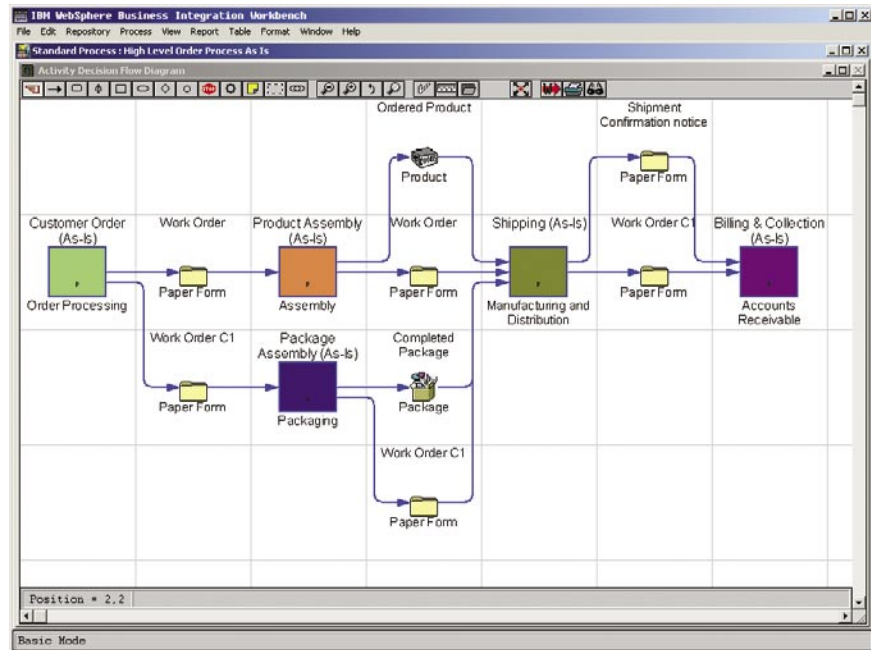
By linking WebSphere Business Integration Workbench and IBM WebSphere InterChange Server, you can create a single repository for all business process models, business objects, collaborations and maps within your enterprise. In addition,

WebSphere Business Integration Workbench allows you to launch the IBM WebSphere Business Integration Toolset-Process Designer and use it to further edit each individual collaboration.

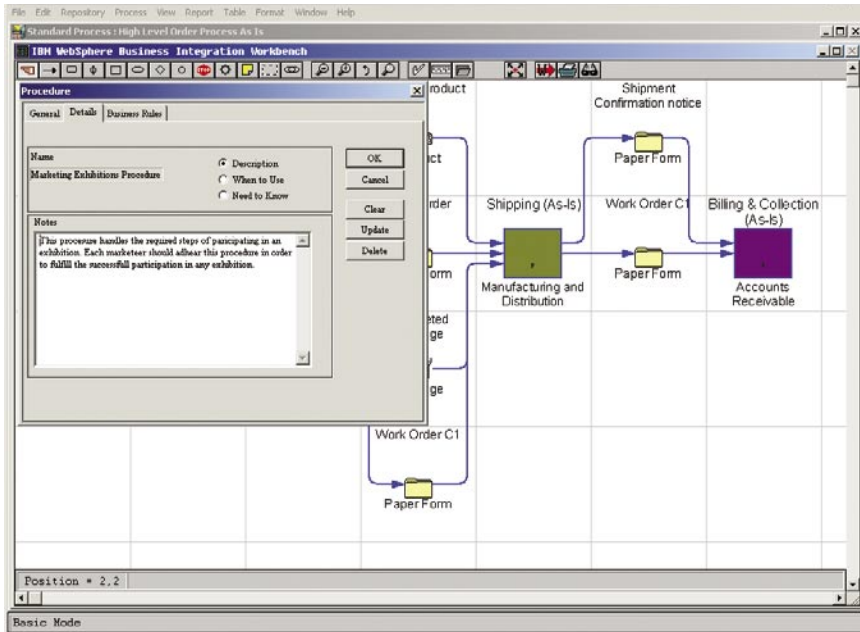
WebSphere Business Integration Workbench is built on three components: business modeler, UML modeler and Xform designer. Each component provides useful options to manage enterprise information.

Business modeler

The business modeler allows users to design business process models using intuitive drag-and-drop technology. Faster and more flexible than drawing, WebSphere Business



Convert complex business processes into easy-to-use flow diagrams.



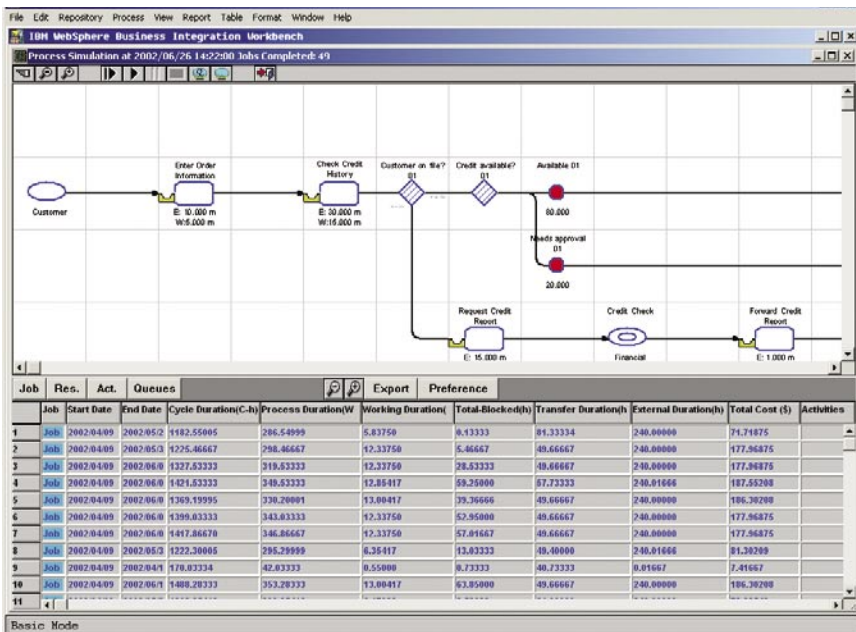
Capture and review details for each step with your outlined business processes.

Integration Workbench contains process modeling functions that translate an organization of complex business processes into logical and easy-to-follow flow diagrams. WebSphere Business Integration Workbench supports cascading detail levels within business processes— from high-level summaries down to specific tasks, roles and dependencies.

Additional enterprise modeling capabilities provide a repository for company policies, procedures, business rules and other important enterprise information—in one place for easy accessibility and enterprisewide consistency. Linking this information to your business processes is vital to creating an accurate representation of all the factors that shape each process outcome.

You can identify the important rules and other guidelines—such as policies, business goals and legal considerations—that affect your process performance to help gauge your company’s readiness for process automation.

The business modeler component also provides dynamic analytical tools to optimize business process modeling. After processes are captured within WebSphere Business Integration Workbench, you can simulate process performance under varying environmental factors, such as time and cost. You can identify the right solution for your current business environment by projecting outcomes before implementation. And you can quickly adjust processes with confidence when business factors change in the future. WebSphere Business Integration Workbench produces process metrics for analysis in multiple chart types, with export capabilities to spreadsheet applications for additional data management options.



Simulate actual process performance using different business variables, then generate reports to identify your optimal outcomes.

UML modeler

The Unified Modeling Language (UML) modeler component bridges the gap between business users and IT professionals. The UML modeler conveniently exports UML output into rapid-development tools, such as Rational Rose software, allowing for extended data use and flexibility. You can also use object models generated by the Rational Rose visual modeling tool with the UML modeler.

Xform designer

The Xform designer component places the capacity of customized workplace design in the hands of the everyday business user. WebSphere Business Integration Workbench users can quickly design GUIs to meet specific enterprise needs, then provide screen mock-ups of new interfaces and forms to illustrate IT requirements. Interface design mock-ups can also be converted to Extensible Markup Language (XML) for use in other software development applications.

Organize and share process data

To enhance and encourage collaboration, IBM WebSphere Business Integration Workbench Server provides the tools necessary to capture, organize and share business process data throughout your enterprise. After creating business process models using WebSphere Business Integration Workbench, team members can use WebSphere Business Integration Workbench Server to collaborate on changes, maintain version control and keep everyone informed.

WebSphere Business Integration Workbench Server consists of a repository, a Web publisher and security features. The repository provides the content management features that can help you organize and consolidate all business processes in a centralized storage system. The repository also allows for version control with a check-in and check-out feature that provides the latest version to authorized team members. And to avoid multiple copies with varying changes, once a user checks out a file, such as an organizational tree, other users have read-only privileges.

IBM WebSphere Business Integration Workbench, Version 4.2.3 at a glance

Hardware requirements

- Intel® Pentium® III, 650MHz or higher
- 128MB RAM or higher
- 200MB available hard disk drive space (100MB for installation; 100MB for operation)

Software requirements

- Microsoft® Windows 98, Windows NT®, Windows 2000 or Windows XP
-

The Web publisher component of the server is an Internet- or intranet-based delivery application that enables authorized personnel to view and use enterprise process data including:

- *Business process models*
- *Policies, procedures and business rules*
- *Goals and performance measures*
- *Organizational trees and employee directories*
- *Process operations*

An easy-to-use interface allows you to resize windows and customize views. Based on an individual's access level, the interface lets authorized users log in and access published materials in the repository through the Web. By distributing this data, the Web publisher can help you inform, educate and train personnel throughout the enterprise.

The security components in WebSphere Business Integration Workbench Server allow you to manage user access to information throughout the system. With these security features, you can identify authenticated users and determine the functions that they can access in the repository and Web publisher.

WebSphere Business Integration portfolio

As the world's largest information technology company, IBM offers a wide range of middleware and operating systems for virtually every computing platform, to give you the right tools to be an e-business on demand™. The IBM WebSphere Business Integration portfolio delivers market-leading middleware that allows you to unite applications, people and business processes so they can work as one. Built on open standards, like J2EE, XML and new Web services standards, this robust portfolio is endowed with reliability, scalability and security—the core strengths you've come to expect from IBM.

With a WebSphere Business Integration solution, your business managers can effectively model and simulate business processes—and refine those processes to increase efficiencies as needs arise. Your IT staff can quickly and easily integrate previously disparate systems within your existing infrastructure—and with new applications and systems. Your systems can connect seamlessly with your customers' and business partners' systems to deliver immediate, dynamic—and personalized—information. And monitor your processes from end to end to show an up-to-the-minute view of how your enterprise is performing, so you can manage business effectiveness and readily make improvements to help you gain better return on investment (ROI) and faster time to value.

For more information

IBM WebSphere Business Integration Modeler is a component of the WebSphere portfolio of Business Integration infrastructure software. To learn more about WebSphere Business Integration Modeler, visit:

ibm.com/websphere/integration/wbimodeler/

Or contact Worldwide Integration Sales at 888 685-0947 or send an e-mail to bisales@us.ibm.com.

IBM WebSphere Business Integration Workbench Server, Version 4.2.3 at a glance

Hardware requirements

For Microsoft Windows®

- Intel Pentium III, 650MHz or higher
 - 256MB RAM (512MB recommended)
 - 100MB disk space, plus sufficient space for the database
-

For IBM AIX®

- IBM RS/6000®
 - 512MB RAM or higher
 - 100MB disk space, plus sufficient space for the database
-

For Sun Solaris operating environment

- Sun Server
 - 512MB RAM or higher
 - 100MB disk space, plus sufficient space for the database
-

For Web browser client

- Intel Pentium III, 650MHz or higher
 - 128MB RAM (256MB recommended)
-

Software requirements

For Windows

- Windows NT Server, Version 4.0; or Windows 2000 Server
 - IBM WebSphere Application Server Advanced Edition, Version 4.0.2; WebSphere Application Server, Version 5.0; or WebSphere Application Server Network Deployment, Version 5.0
 - IBM DB2® Universal Database™, Version 7.2 with Fix Pack 5; DB2 Universal Database, Version 8.1; Microsoft SQL Server 2000; Oracle, Version 8.1.7.1; or Oracle 9i
-

For IBM AIX

- AIX, Version 4.3 or higher; or AIX, Version 5.1 or higher
 - IBM WebSphere Application Server Advanced Edition, Version 4.0.2; WebSphere Application Server, Version 5.0; or WebSphere Application Server Network Deployment, Version 5.0
 - IBM DB2 Universal Database, Version 7.2 with Fix Pack 5; DB2 Universal Database, Version 8.1; Oracle, Version 8.1.7.1; or Oracle 9i
-

For Sun Solaris operating environment

- Solaris, Version 7, maintenance level August 2001 or later; or Solaris, Version 8, maintenance level August 2001 or later
 - IBM WebSphere Application Server Advanced Edition, Version 4.0.2; WebSphere Application Server, Version 5.0; or WebSphere Application Server Network Deployment, Version 5.0
 - IBM DB2 Universal Database, Version 7.2 with Fix Pack 5; DB2 Universal Database, Version 8.1; Oracle, Version 8.1.7.1; or Oracle 9i
-

For Web browser client

- Microsoft Windows 98; Windows NT, Version 4.0 with Service Pack 3 or higher; Windows 2000; or Windows XP
 - Microsoft Internet Explorer, Version 5.0 or higher
 - Java Plug-in, Version 1.4.0 or higher
-



© Copyright IBM Corporation 2003

IBM Corporation
Software Group
Route 100
Somers, NY 10589
U.S.A.

Produced in the United States of America
03-03
All Rights Reserved

AIX, DB2, DB2 Universal Database, the e-business logo, e-business on demand, IBM, the IBM logo, MQSeries, RS/6000 and WebSphere are trademarks or registered trademarks of International Business Machines Corporation in the United States, other countries or both.

Intel and Pentium are trademarks of Intel Corporation in the United States, other countries or both.

Microsoft, Windows and Windows NT are trademarks of Microsoft Corporation in the United States, other countries or both.

Java and all Java-based trademarks and logos are trademarks of Sun Microsystems, Inc. in the United States, other countries or both.

Other company, product and service names may be trademarks or service marks of others.