

IBM WebSphere Process Server for z/OS, Version 6.0.2

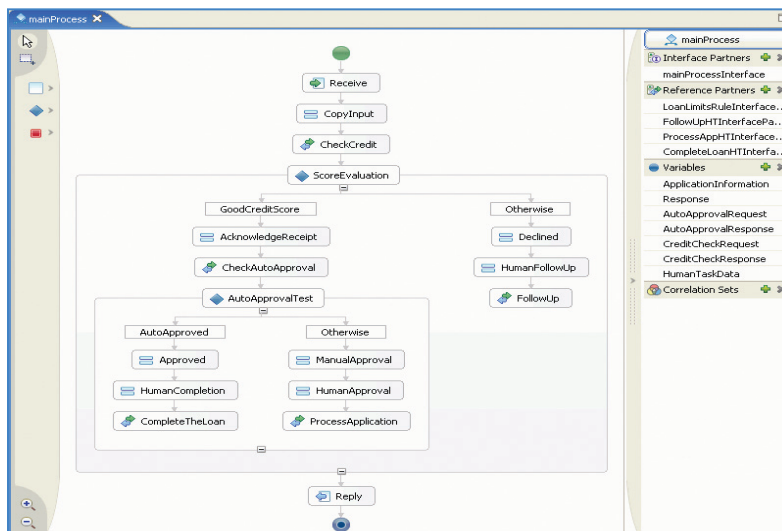
Highlights

- **Enables you to rapidly construct and deploy processes that can meet the goals of your business**
- **Provides service-governance capabilities with dynamic run-time discovery and invocation of services**
- **Delivers one platform, one tool for end-to-end integration to provide service discovery, mediation and orchestration**
- **Provides simplified tools to describe, create and manage business processes with minimal skills**
- **Integrate more (into the process) with Web services, application adapters and advanced messaging capabilities**
- **Delivers high performance and quality of service with advanced fault-tolerance and error-detection capabilities**
- **Supports comprehensive, human-centric business process management and task management**
- **Runs natively on z/OS, to integrate seamlessly with your most critical application assets**

Your business engine for critical processes

Markets change, economies rise and fall, new threats and opportunities present themselves, and your business is in the middle of it all. In this dynamic, on demand world, you need to take back control of your business. You need to respond faster than your competitors, out-maneuvering them to stay ahead of the game, and provide your customers with the service and products that differentiate you from the pack. Business process management (BPM) enables you to do exactly that.

At the heart of BPM is IBM WebSphere® Process Server for z/OS, Version 6.0.2, a high-performance business engine that can run your critical business processes securely, consistently and with transactional integrity. Whether you need to automate processes in the factory, process claims and financial payments, run an efficient supply chain or help ensure compliance with the latest industry regulations, WebSphere Process Server for z/OS can orchestrate the assets of your business to form highly optimized and effective processes to meet your business goals.



WebSphere Process Server enables rapid and easy construction of new service flows and mediations

One platform, one tool, one set of skills

WebSphere Process Server for z/OS and IBM WebSphere Integration Developer, Version 6.0.2 together deliver a unique integration experience that can help simplify resource integration at the process level right through to the information held in your business applications and components. They help deliver a service oriented architecture (SOA) based on a common model to orchestrate, mediate, connect, map and run the underlying IT functions as part of your business processes.

Visualize

Your integration developers have to learn only one set of skills, using one tool for many uses. WebSphere Integration Developer is the common tool for building SOA-based integration solutions across WebSphere Process Server for z/OS, IBM WebSphere Enterprise Service Bus (WebSphere ESB) and IBM WebSphere Adapters. As a result, WebSphere Integration Developer simplifies integration with rich features that accelerate the adoption of SOA by rendering existing IT assets as service components that

can encourage reuse and efficiency. Integration developers can assemble complex business solutions with minimal skills—whether processes, mediations adapters or code components. They can also construct process and integration solutions using drag-and-drop technology, without having a working knowledge of Java™ coding. And IBM WebSphere Business Modeler uses WebSphere Integration Developer capabilities to provide a business-centric view of process modeling.

Orchestrate

WebSphere Process Server for z/OS implements a series of services, as part of a process, with end-to-end transactional integrity. This capability includes comprehensive support for human-related tasks, integration of information in disparate applications into the process and integration with information-management-based systems. Flexibility is maximized through the ability to choose which services to invoke from IBM WebSphere Service Registry and Repository, depending on environmental factors that affect the process instance at that time. Together with WebSphere Business Modeler and IBM WebSphere Business Monitor, WebSphere Process Server for z/OS offers a comprehensive SOA offering that completes the life cycle of business processes.

Mediate

WebSphere Process Server for z/OS contains a rich set of mediation and integration capabilities also found in WebSphere ESB. It abstracts the complexities of integration between applications and data sources by mediating between services wherever they are—regardless of vendor, platform, or whether they are home-grown or packaged applications. This function means that you can present every asset in the business as a set of well-defined services—and shield the business from technology changes while providing stable interfaces to orchestrate business processes. With strong support for Java Messaging Services (JMS) that lets you take advantage of the extensive platform reach of IBM WebSphere MQ, as well as Web services, XML and many other standards, you can be assured that your processes can reach every part of your business as well as that of your trading partners.

Why platform matters

For many years, the mainframe has been associated with a set of traditional core values—availability, security and scalability. As a result, many enterprises around the world have chosen the mainframe as their deployment platform for critical applications. It isn't surprising that in industries such as banking, where factors like security are so important, there continues to be a strong affinity for mainframe servers.

Today's IBM System z™ servers take the traditional values of the mainframe to the next level. They offer:

- *Extremely high levels of application and data availability for business resiliency*
- *Solid security and privacy*
- *Massive horizontal and vertical scalability features for nondisruptive growth*
- *An optimized operating environment with higher usage and balanced system design*

- *Advanced multidimensional virtualization capabilities*
- *Highly responsive, autonomic and intelligent workload management*
- *An open-standards-based platform*
- *A leading-edge platform for the transformation and integration of existing applications and data*
- *Specialty engines that can better integrate with and take advantage of existing assets with a new set of economics*
- *World-class integrated support*

The mainframe capabilities that the System z platform brings to the market are very important for all industries. The cost that results from failures, be it downtime or security breaches, can be very expensive. Thus, resiliency is critical. By choosing to run WebSphere Process Server on System z, companies across a range of industries can take advantage of these key capabilities to help address many of their business requirements.

New in this release

WebSphere Process Server for z/OS, Version 6.0.2 and WebSphere Integration Developer, Version 6.0.2 have been enhanced with a number of new features and capabilities, including:

The ability to integrate more into the process with enterprise-wide reach and connectivity

These capabilities come included with the product, providing integration with Web services, application adapters and advanced messaging capabilities.

True governance of services

Integration of WebSphere Service Registry and Repository with WebSphere Process Server for z/OS helps provide end-to-end governance for all services. WebSphere Service Registry and Repository integration also provides dynamic, on demand capabilities to Business Process Execution Language (BPEL) processes by enabling process participants (imports and exports of service components) to search relevant services and service metadata information. This capability enables you to adapt process behavior in real time that is suitably augmented by the service metadata in WebSphere Service Registry and Repository.

Easy-to-use, comprehensive, human-centric BPM scenarios

These scenarios include:

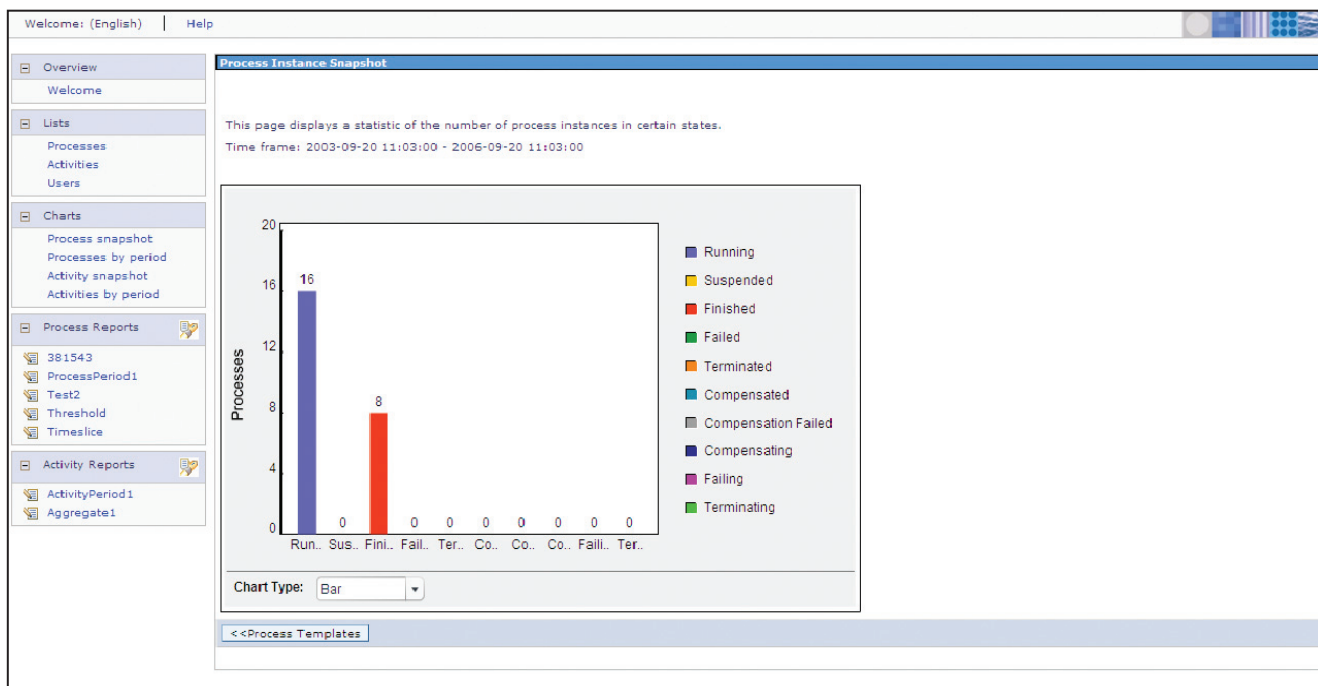
- A rapid Web-client-generation tool for business users to generate user interfaces and task lists.
- A customizable administration and configuration client for administrators.
- Enhanced support so that you can easily build business-user clients from powerful JavaServer Faces (JSF) components, for both Web-based and portal clients.
- Support for a Web services interface for workflow client applications on any platform, including Microsoft® .NET and Java 2 Standard Edition (J2SE), which means easier access for remote clients to interact with the process.
- A remote client-install option that can install clients transparently using WebSphere Process Server for z/OS

application programming interfaces (APIs) (not just on the same system as WebSphere Process Server for z/OS).

- The ability to assign work to a group or team of individuals who all share the same job or responsibilities, in shifts or in parallel.
- The ability to handle ad hoc tasks, which can offer line-of-business (LOB) users the flexibility to create other tasks (such as inserting these tasks into a task list), schedule follow-on work for the same user or follow-up tasks for coworkers. It also enables them to handle events that were not planned for in advance, and provides the ability to create a customized e-mail message for human-task escalations (for example, to alert a manager that a task has not been processed).
- Post-processing of staff query results that enables you to plug in your specific workforce-management

policies, such as staff workload balancing, substitutions when an employee is absent or setting preferences for active users. It also supports the integration of other custom staff repositories.

- The ability to automatically transition directly from one human task to the next within the same business process using the server-controlled page-flow capability.
- The ability to query and filter lists of business processes based on process variables that contain customer-specific data, such as order ID or customer name. You can also store those queries and filters as private views.
- A graphical view for processes that enables you to track the status of process instances and each individual activity.



WebSphere Process Server gives you visibility and measurability of your processes' and systems' performance.

*Runtime administration improvements
(dynamic reconfiguration, with no need to
rebuild or redeploy)*

Runtime administration improvements made in this release include:

- *Administration configuration of mediation properties and end points*
- *Dynamic end-point selection that enables you to intervene to get part of the process to interface to a different system (for example, to change from Oracle to Siebel dynamically for future process instances)*
- *The ability to handle unmodeled faults from Web service invocations*
- *The ability to add mediation modules after deployment without going into WebSphere Integration Developer*
- *The flexibility to manage your BPM solution without having to redeploy or reauthor the process*
- *Cleanup service for completed business processes*
- *Automatic staff query refresh using a timer-controlled daemon*
- *New IT-level observation, reporting and statistic capabilities, offering graphical charts and flexible drill-down capabilities for historical and accumulated data, such as average process duration or actual work time*

Tight integration between information services and business processes

Integration enhancements include:

- *The introduction of an information-service activity that is designed to provide direct access to relational database systems with the support of full Structured Query Language (SQL) and interaction with other information-management services, such Extract, Transform and Load (ETL), and federated access to heterogeneous information sources such as enterprise content management (ECM) systems*
- *WebSphere Integration Developer tooling plug-in support for information-management activities*

Market-leading middleware designed for BPM

WebSphere Process Server for z/OS and WebSphere Integration Developer enable you to take advantage of IBM's extensive experience and long history in providing solutions that address your BPM challenges. Through the combination of open standards, SOA, and the new features and enhancements described here, WebSphere Process Server for z/OS and WebSphere Integration Developer enable you to rapidly build and deploy flexible on demand processes that integrate with your existing assets. This means you can build your SOA the way you want it—flexible, fast and business-driven.

For more information

To learn more about IBM WebSphere Process Server for z/OS, Version 6.0.2 and IBM WebSphere Integration Developer, Version 6.0.2, contact your IBM representative or IBM Business Partner, or visit:

ibm.com/software/integration/wps

To join the IBM WebSphere Global Community, visit:

www.websphere.org



IBM WebSphere Process Server for z/OS, Version 6.0.2

Hardware requirements

Any System z processor capable of running the required level of a compatible operating system with enough storage to meet the combined requirements of the programming prerequisites

Software requirements

- IBM z/OS®, Version 1.4 or later
- WebSphere Application Server for z/OS, Version 6.0.2.12
- IBM DB2® Universal Database™ for z/OS, Version 7 or Version 8, or IBM Cloudscape™, Version 5.1.60.24 (for development only)
- WebSphere Integration Developer, Version 6.0.2

WebSphere Process Server for z/OS application-integration capabilities offer a wide range of options, including support for:

- IBM CICS® Transaction Server, Version 1.3, Version 2.2, Version 2.3 and Version 3.1
- IBM IMS™, Version 8 and Version 9
- IBM WebSphere MQ for z/OS, Version 5.3, Version 5.3.1 and Version 6
- WebSphere Adapters
- Web services

Details about hardware and software requirements can change frequently. For the latest hardware and software requirement for WebSphere Process Server for z/OS, Version 6.0.2, visit ibm.com/software/integration/wps/sysreqs.

© Copyright IBM Corporation 2006

IBM Corporation
Software Group
Route 100
Somers, NY 10589
U.S.A.

Produced in the United States of America
10-06
All Rights Reserved

CICS, Cloudscape, DB2, DB2 Universal Database, IBM, the IBM logo, IMS, the On Demand Business logo, System z, WebSphere and z/OS are trademarks of International Business Machines Corporation in the United States, other countries or both.

Microsoft is a trademark of Microsoft Corporation in the United States, other countries or both.

Java and all Java-based trademarks are trademarks of Sun Microsystems, Inc. in the United States, other countries or both.

Other company, product or service names may be trademarks or service marks of others.