

# BRMS in Action!

## Understanding the Impact of Changes to Business Rules

*Presented by ILOG, An IBM Company*

February 10, 2009

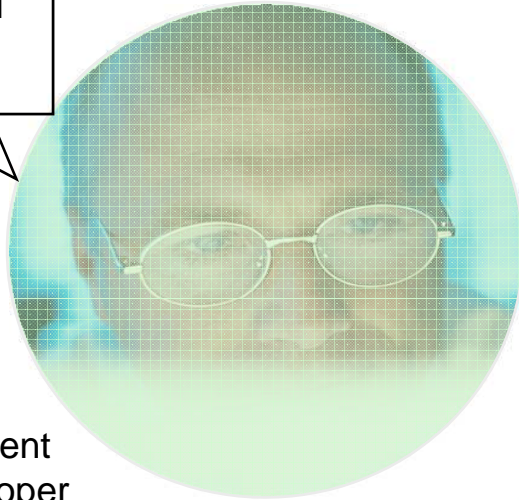
Steve Munsat  
Brett Stineman

- Presentation (45 minutes)
- Q&A
  - Submit a question at any time during the presentation
  - Click 'Q&A' from the panel on the bottom right side of your screen
  - Type a question and click Send
- Link to recorded presentation and slides will be e-mailed to all attendees
- If you have any technical problems during the broadcast, for help call 1.866.779.3239

# Business Rules Management: Varying Needs Across the Organization



I need a comprehensive rules development and maintenance environment



Development  
Rule Developer  
Rule Modeler  
Business Analyst

I need easy, efficient and reliable policy change delivery



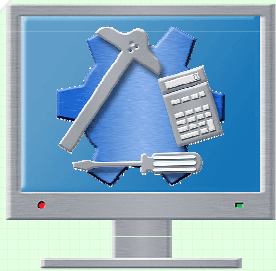
Line of Business  
Business Partner  
Policy Manager  
Line of Business Manager

Production  
IT Operations  
System Administrator



I need performance, scalability, monitoring and reliability of operations

# IBM ILOG JRules 6.7 – Comprehensive Environments for Every User

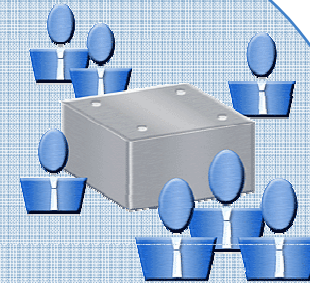


**Rule Studio**

Developers

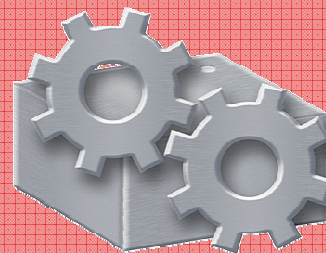


**Rule Scenario Manager**



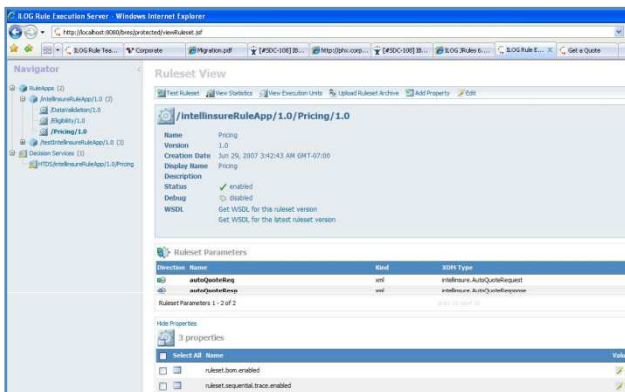
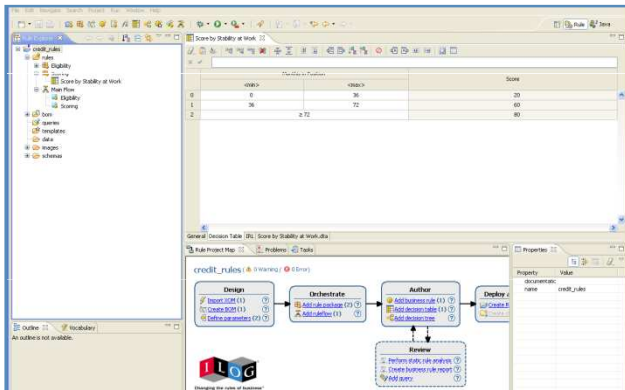
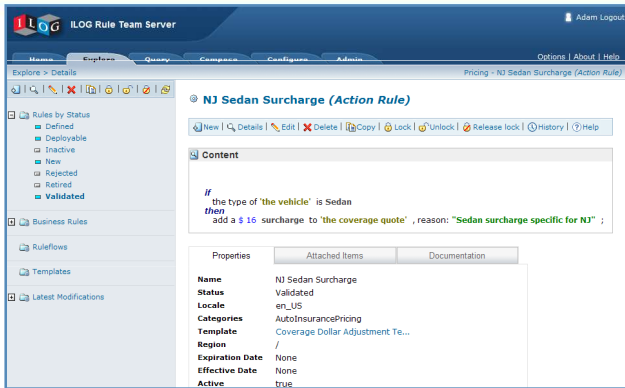
**Rule Team Server**

Business Users



**Rule Execution Server**

Administrator



Archives of previous sessions at: [http://www.ilog.com/promotions/brms\\_series/](http://www.ilog.com/promotions/brms_series/)

## 1. Empowering Business Users to Manage Decision Change

- Focus on Rule Team Server (RTS)
- Business users control definition and maintenance of rules in a collaborative, web-based environment
- Easy navigation, querying, authoring and validation
- Configurable, role-based controls

## 2. How to Build Rule-Based Apps for Your Business Users

- Focus on Rule Studio
- Developers control definition and maintenance of rule projects/applications in an Eclipse-based IDE
- Tools to assist in creation and customization on the business object model
- Extend ongoing rule maintenance to business users in RTS

## 3. How to Manage and Deploy Rule-Based Apps

- Focus on Rule Execution Server
- Web-based management and monitoring of deployed rule apps
- Versioning, execution testing and hot deploy capabilities
- Create web services for rulesets without coding





## Rule Scenario Manager

- Test rules for correctness before deploying
- Assess business impact of changes with simulations
- View results in HTML or Excel, or create XML file for use in other apps.

*We will observe how business users and developers can test and simulate rule-based applications in IBM ILOG Rule Scenario Manager (RSM). Using RSM, they can easily evaluate how rule changes will affect the behavior of operational systems.*

**Scenario Navigator**

Show All (59)

- Car Rental (6)
- Claims (10)
- Insurance (4)
- Junk (16)
- Loans (1)
- Sales (3)
- inputs (0)
- nicoUploadTest (1)

**Scenario Browser**

Scenario Browser

Name	Folder	Ruleset Path	Description	Action
<input type="checkbox"/> Car Rental - XOM	Junk	/carrentalRuleApp/ruleeditingrulesanswer		<input type="button" value="Edit"/> <input type="button" value="Launch"/>
<input type="checkbox"/> Car Rental 1	Car Rental	/carrentalRuleApp/ruleeditingrulesanswer		<input type="button" value="Edit"/> <input type="button" value="Launch"/>
<input type="checkbox"/> Car Rental 2 - XOM	Car Rental	/carrentalRuleApp/ruleeditingrulesanswer		<input type="button" value="Edit"/> <input type="button" value="Launch"/>
<input type="checkbox"/> Car Rental 3	Car Rental	/carrentalRuleApp/ruleeditingrulesanswer A		<input type="button" value="Edit"/> <input type="button" value="Launch"/>
<input type="checkbox"/> Car Rental 4	Car Rental	/carrentalRuleApp/ruleeditingrulesanswer B		<input type="button" value="Edit"/> <input type="button" value="Launch"/>
<input type="checkbox"/> Car Rental 5	Car Rental	/carrentalRuleApp/ruleeditingrulesanswer C		<input type="button" value="Edit"/> <input type="button" value="Launch"/>
<input type="checkbox"/> Car Rental 6	Car Rental	/carrentalRuleApp/ruleeditingrulesanswer D		<input type="button" value="Edit"/> <input type="button" value="Launch"/>
<input type="checkbox"/> Claim Validation 1	Junk	/ClaimRuleApp/ClaimRules	BOM	<input type="button" value="Edit"/> <input type="button" value="Launch"/>
<input type="checkbox"/> Claim Validation 2	Junk	/ClaimRuleApp/ClaimRules	BOM	<input type="button" value="Edit"/> <input type="button" value="Launch"/>
<input type="checkbox"/> Claim Validation 3	Junk	/ClaimRuleApp/ClaimRules	BOM	<input type="button" value="Edit"/> <input type="button" value="Launch"/>

Delete Selected Items

Page 1 of 6

<< First | < Prev | 1 2 3 4 5 6 | Next > | Last >>



*Vijay  
Developer*



*Patrick  
LOB Manager*



- Implement change in a way that is easy, safe and predictable



- Reduce the time and cost required to develop and maintain operational systems that are affected by change



- Provide a way for IT and Business functions to work collaboratively on defining and updating the decision logic that drives operational systems



- Increase the visibility of how systems use and are affected by decision logic

# Coming Up Next: Advanced Rule Management and Rule Governance



## Rule Team Server

Join us on March 17 and learn how Rule Team Server:

- Provides capabilities to perform advanced rule management and rule governance
- Enables you to manage rule projects and define roles according to the needs of your organization

The screenshot displays the ILOG Rule Team Server web application. The top navigation bar includes 'Home', 'Explore', 'Query', 'Compose', 'Configure', and 'Admin'. The current page is titled 'NJ Sedan Surcharge (Action Rule)'. The left sidebar shows a tree view of rules, with 'Validated' rules expanded. The main content area shows the rule's content:

```
if
  the type of 'the vehicle' is Sedan
then
  add a $ 16 surcharge to 'the coverage quote' , reason: "Sedan surcharge specific for NJ" ;
```

Below the content is a 'Properties' table:

Properties	Attached Items	Documentation
<b>Name</b>	NJ Sedan Surcharge	
<b>Status</b>	Validated	
<b>Locale</b>	en_US	
<b>Categories</b>	AutoInsurancePricing	
<b>Template</b>	Coverage Dollar Adjustment Te...	
<b>Region</b>	/	
<b>Expiration Date</b>	None	
<b>Effective Date</b>	None	
<b>Active</b>	true	



- Learn and try at:  
<http://www.ilog.com/brms>
  - Free 6 month trial download
  - White papers
  - Use cases
  - Forums and blogs on business rules
- Contact us at:
  - 800-FOR-ILOG (800-367-4564)
  - via email at [info@ilog.com](mailto:info@ilog.com)
  - on the web at our [Contact Center page](#) for immediate assistance



# Questions & Answers

*Thank You for Attending!*

*All responses to questions will be posted at:  
[http://www.ilog.com/promotions/brms\\_series/](http://www.ilog.com/promotions/brms_series/)*