

The presentation will begin at
8:30 am
Pacific Time - US

ILOG Visualization 101
Transform Insight into Action

June 16, 2009

Welcome

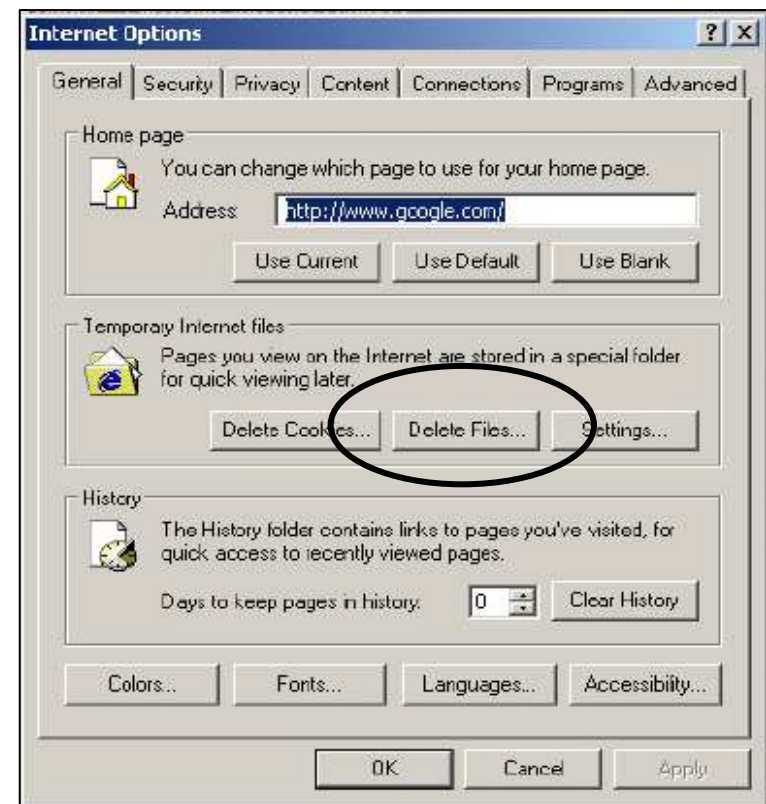
ILOG Visualization 101 *Transform Insight into Action*

June 16, 2009

Julie Seltzer Firsty
jfirsty@us.ibm.com

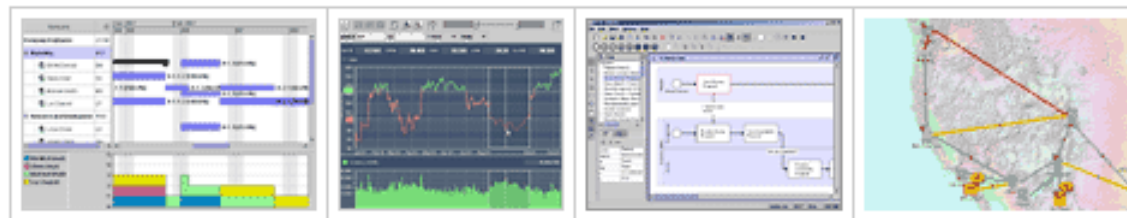
- 45 minute discussion
- Link to replay will be emailed to all attendees
- Attendees will be muted to minimize background noise

- Close all applications that are not in use
- Clear your temporary internet files cache
 - Open a new web browser window
 - From the Tools Menu
 - Select Internet Options
 - Click Delete Files button



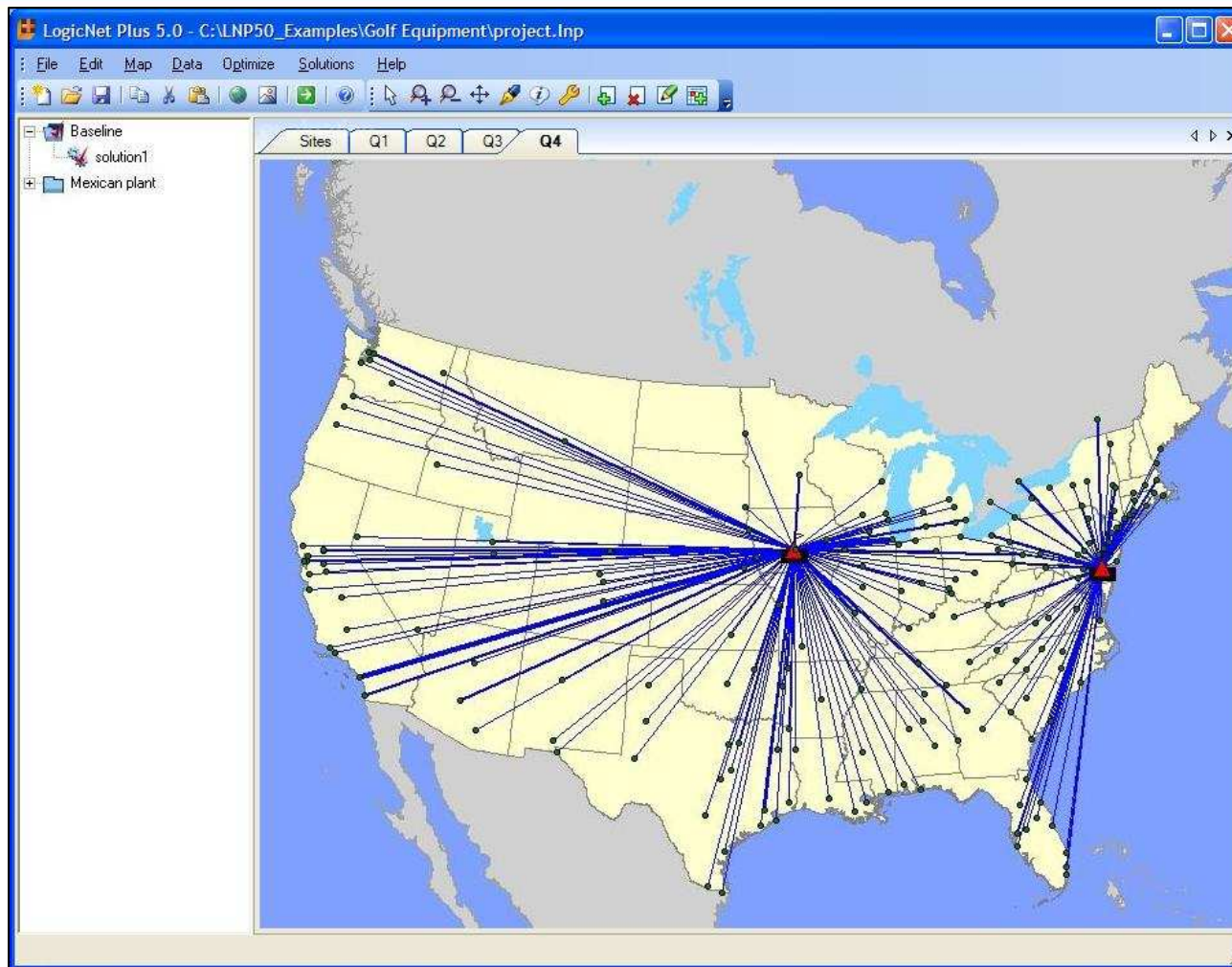
- Ed Király, Visualization Product Manager, kiraly@us.ibm.com
- Dan Jeffrey, TAM Manager, djeffrey@us.ibm.com

IBM ILOG Visualization 101



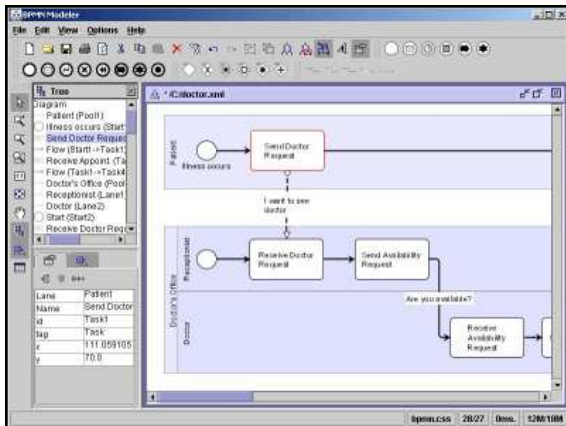
Ed Király and Dan Jeffrey
Visualization Team
kiraly@us.ibm.com
djeffrey@us.ibm.com

What is Visualization?



...or this graphical display??

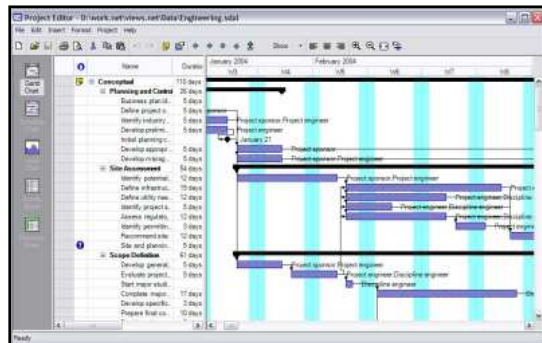
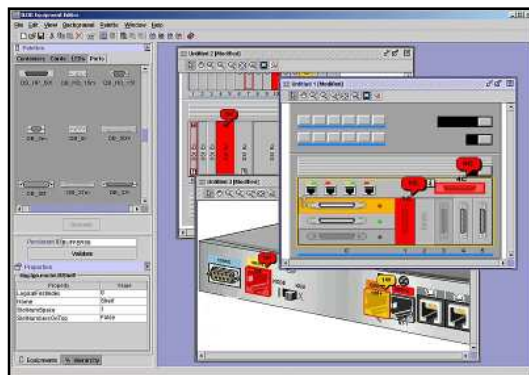
What is ILOG Visualization?



- “Building blocks” for developing user interfaces
 - Not finished apps
 - In contrast with Cognos
 - Target audience: user interface programmers
- Three sweet spots
 - Visual modeling applications
 - Visual monitoring
 - Analysis applications
- We offer 14 products, organized by
 - Development platform
 - And type of display you are building
- Key points
 - These user interfaces are difficult to build
 - We provide customizable building blocks
 - We take care of performance
 - Huge data sets
 - Fast screen redraws
 - We bring innovation to the interface

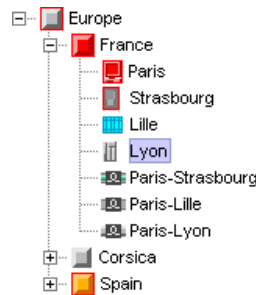
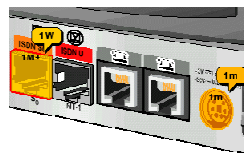
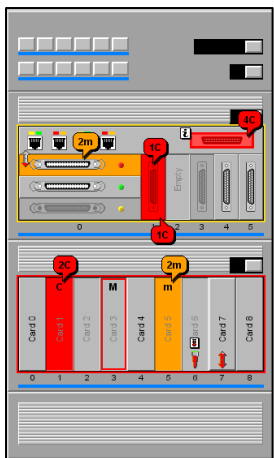
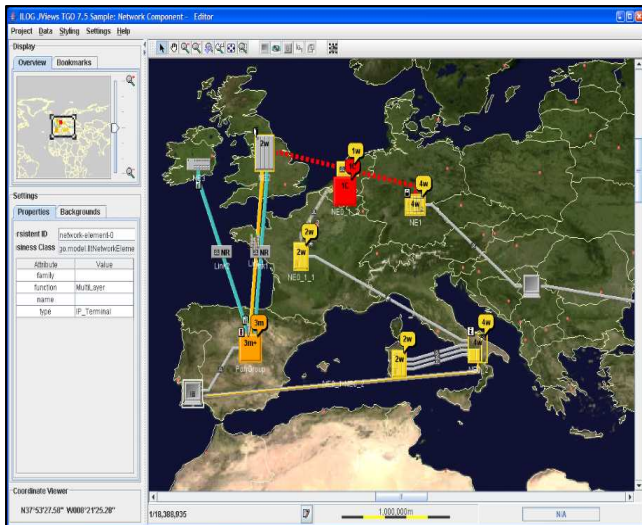
Introductory Demonstration

Industries and Clients



■ Our clients are everywhere

- Network Management
- Defense
- Industrial supervision
- Planning & Scheduling
- Enterprise business
- ... and more...



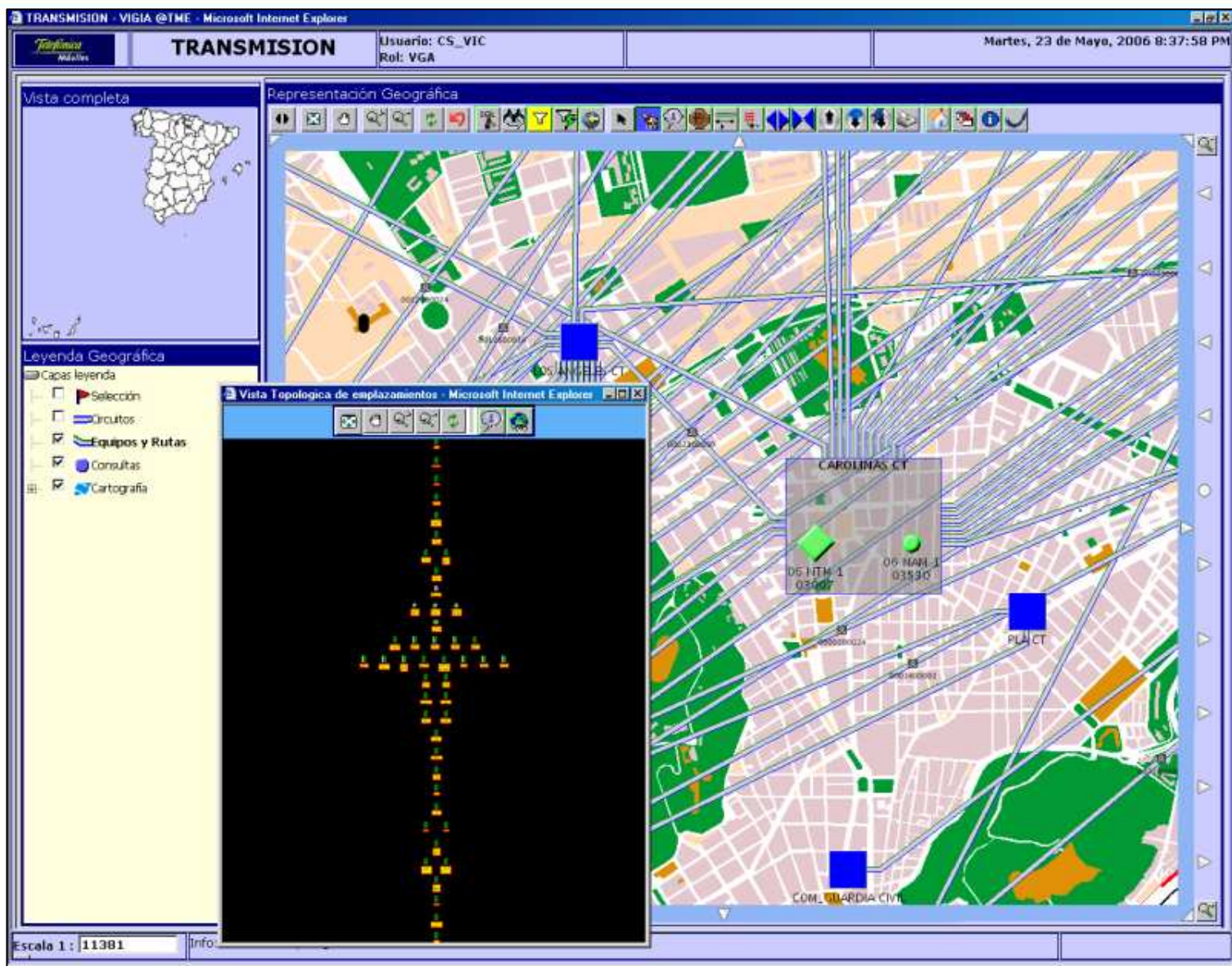
Object	Severity	Trend	Ack
Mux0	Cleared	↓	✓
Mux0	Warning	→	
Mux0	Minor	→	✓
Mux0	Minor	→	
Mux1	Warning	↓	
Mux1	Major	→	
Mux1	Warning	→	✓
Mux1	Indeterminate	→	
Mux1	Major	→	
Mux1	Minor	→	
Mux2	Critical	→	
Mux2	Minor	→	
Mux2	Critical	↑	

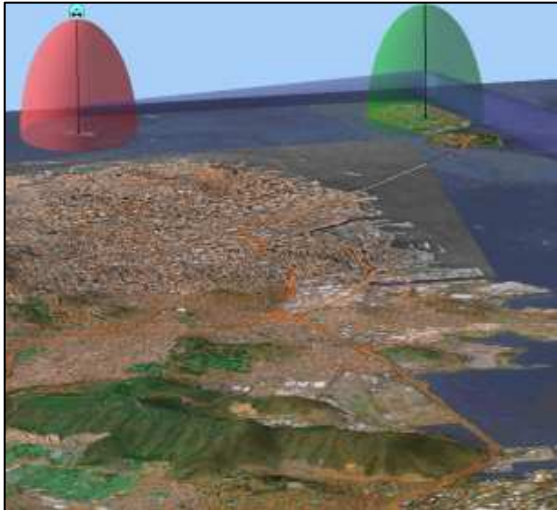
■ Goal

- Provide administrators with an intuitive view of their equipment and quality of service

■ Features

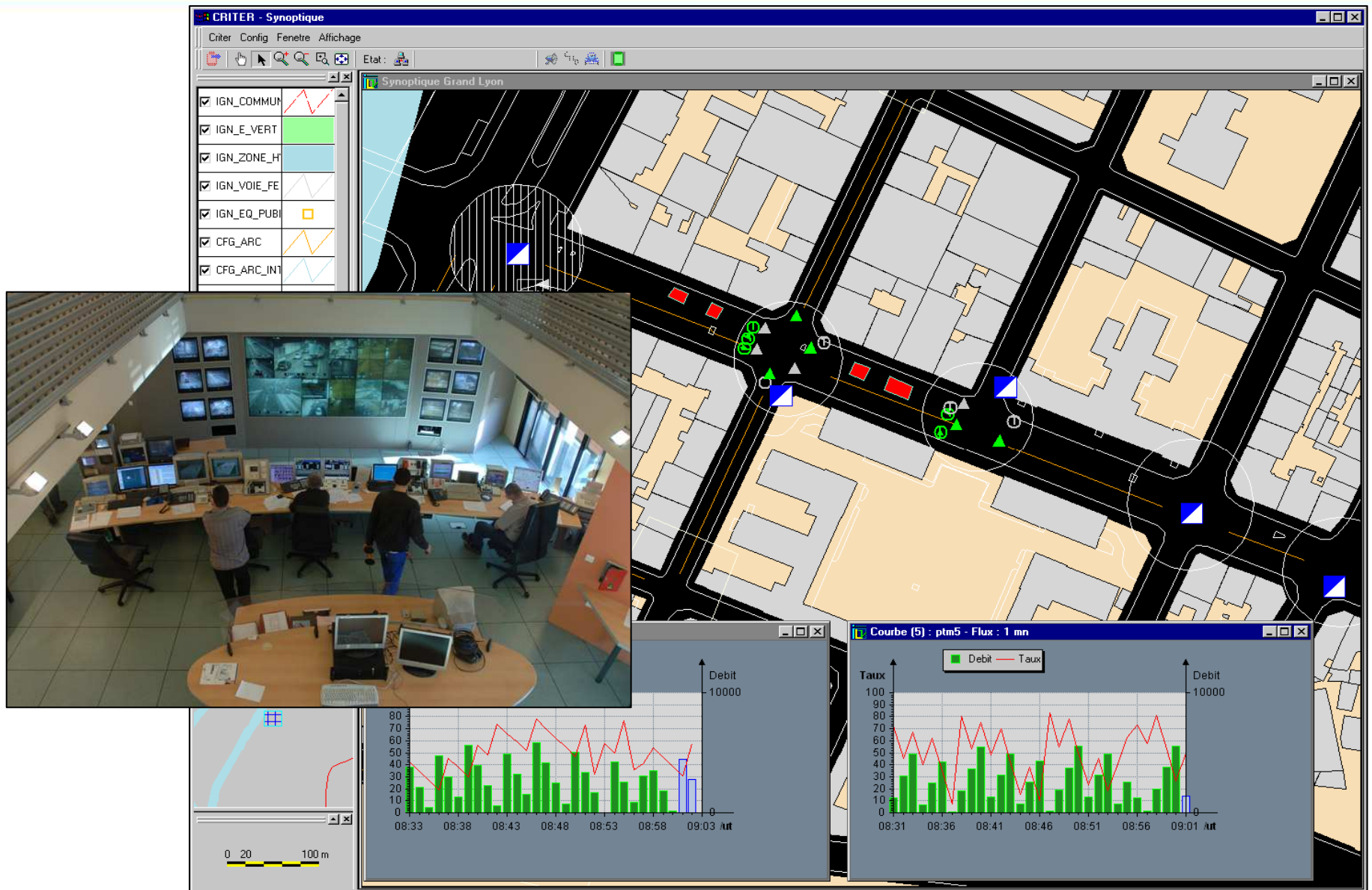
- Pre-built standards-based symbols
- “Smart” network topology displays
- Perfect for real-time updates
- Desktop and web



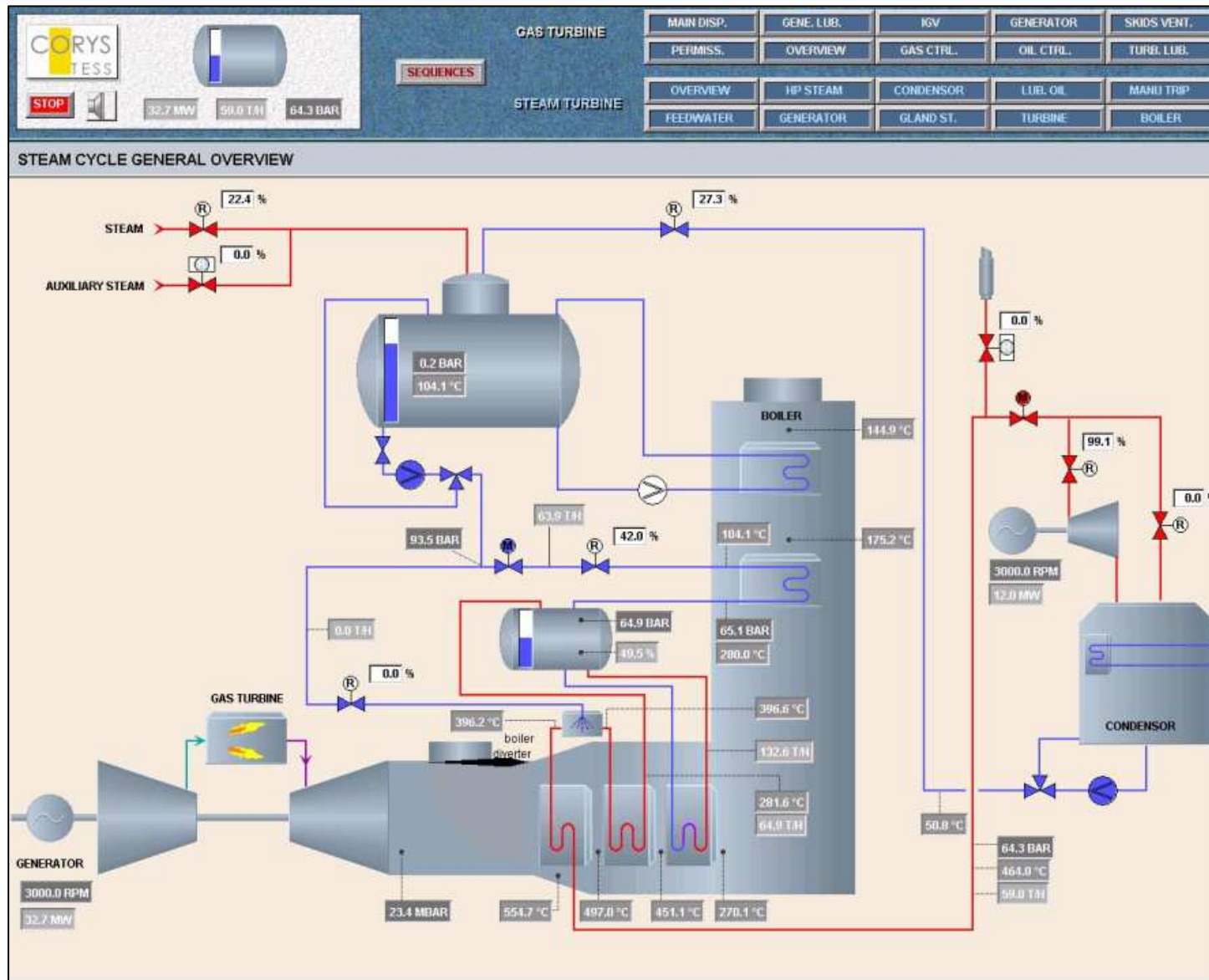


- **Goal**
 - Real-time dynamic tactical displays
 - Mission planning displays
- **Features**
 - Pre-built, standards-based symbols
 - Can handle almost any type of map
 - Displays for land, air, sea displays
 - A real-time alternative to ESRI

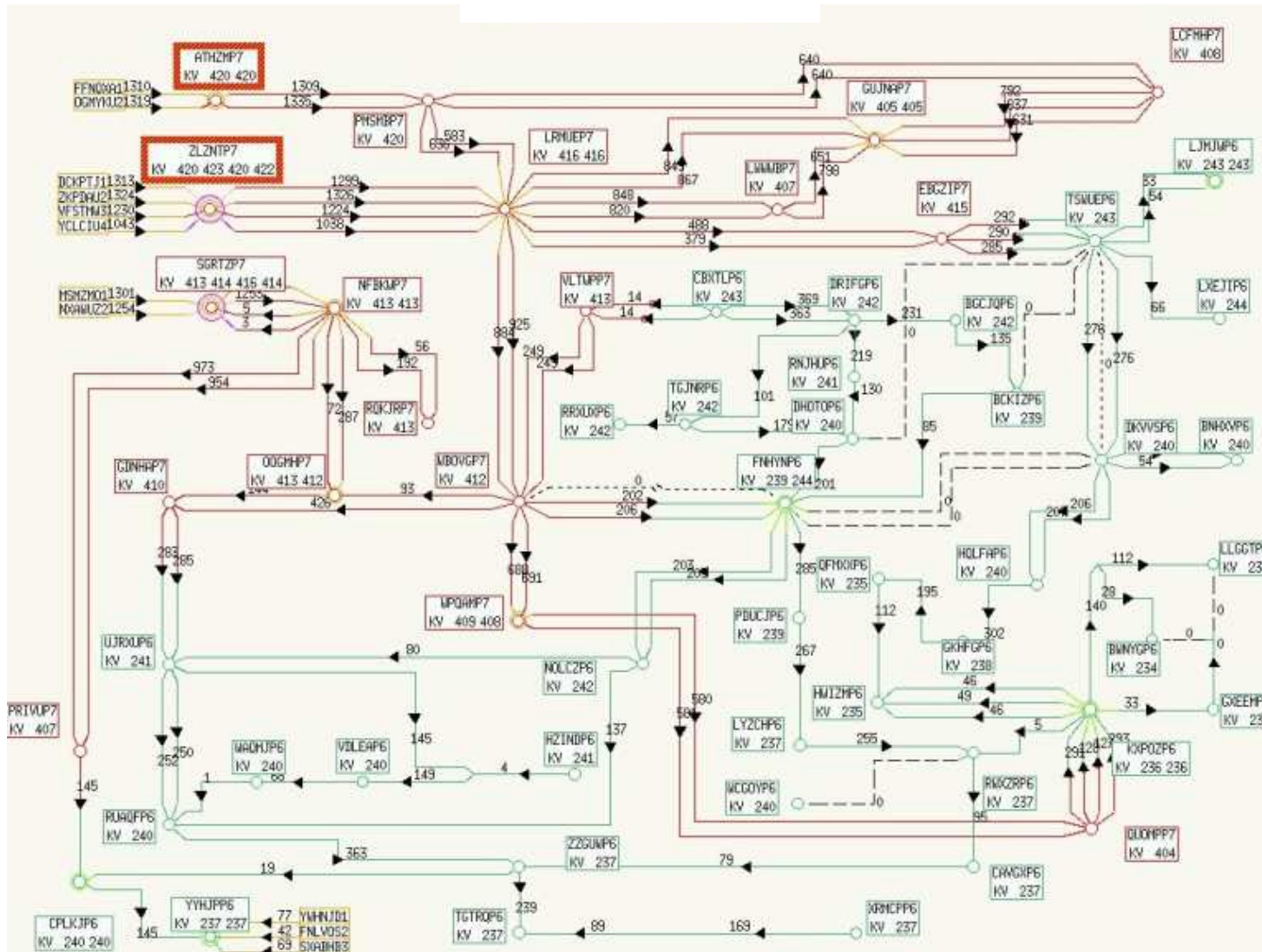
Traffic Supervision in Lyon

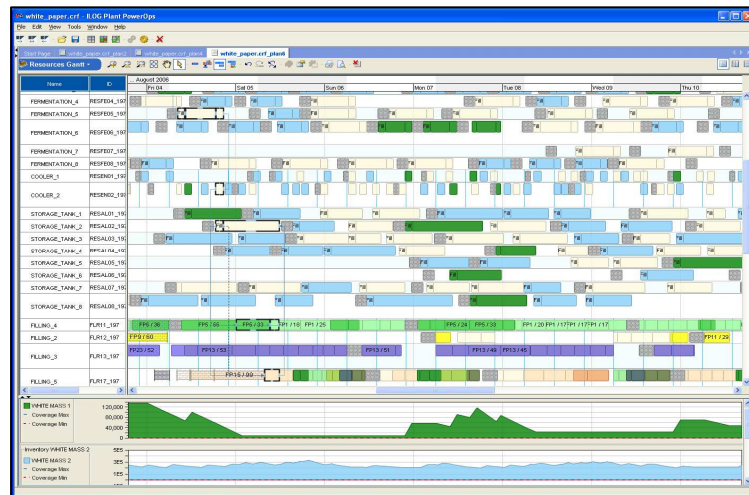
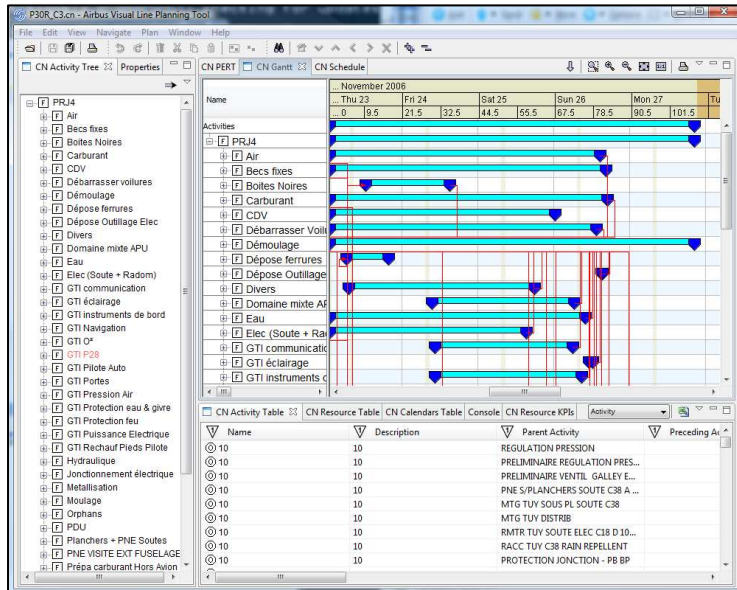


Corys: Nuclear Plant Simulators



EDF: Electrical Network





■ Goal

- View and edit plans, schedules, projects, resource charts

■ Features

- Typically connected to scheduling apps
- Scalability and full customization
- Desktop and Web

P30R_C3.cn - Airbus Visual Line Planning Tool

File Edit View Navigate Plan Window Help

CN Activity Tree Properties CN PERT CN Gantt CN Schedule

... November 2006

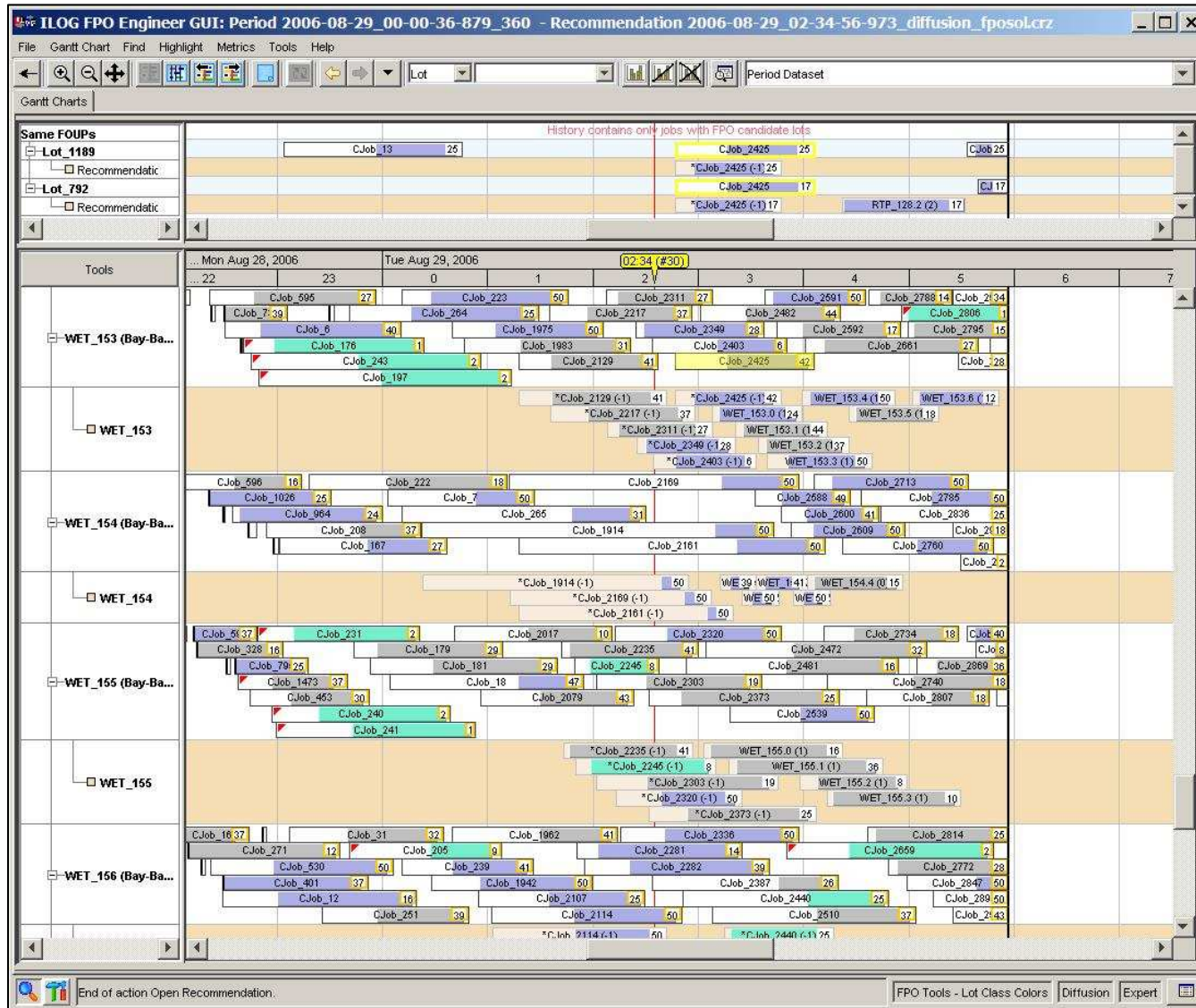
Name	... Thu 23	Fri 24	Sat 25	Sun 26	Mon 27	Tu					
...	0	9.5	21.5	32.5	44.5	55.5	67.5	78.5	90.5	101.5	

Activities

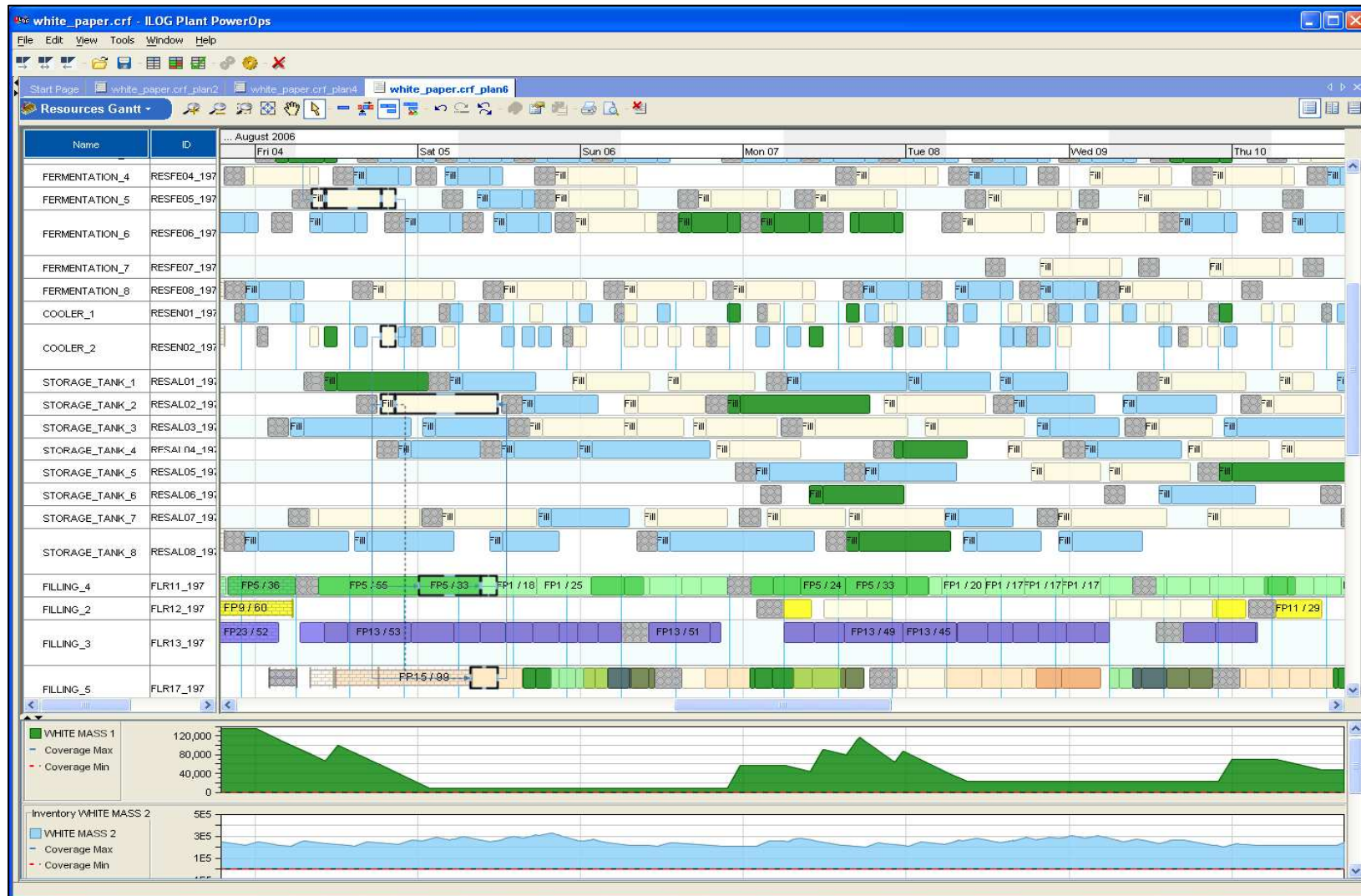
- PRJ4
 - Air
 - Becs fixes
 - Boites Noires
 - Carburant
 - CDV
 - Débarrasser voilures
 - Démoulage
 - Dépose ferrures
 - Dépose Outillage Elec
 - Divers
 - Domaine mixte APU
 - Eau
 - Elec (Soute + Radom)
 - GTI communication
 - GTI éclairage
 - GTI instruments de bord
 - GTI Navigation
 - GTI O²
 - GTI P28
 - GTI Pilote Auto
 - GTI Portes
 - GTI Pression Air
 - GTI Protection eau & givre
 - GTI Protection feu
 - GTI Puissance Electrique
 - GTI Rechauf Pieds Pilote
 - Hydraulique
 - Jonctionnement électrique
 - Metallisation
 - Moulage
 - Orphans
 - PDU
 - Planchers + PNE Soutes
 - PNE VISITE EXT FUSELAGE
 - Prépa carburant Hors Avion

CN Activity Table

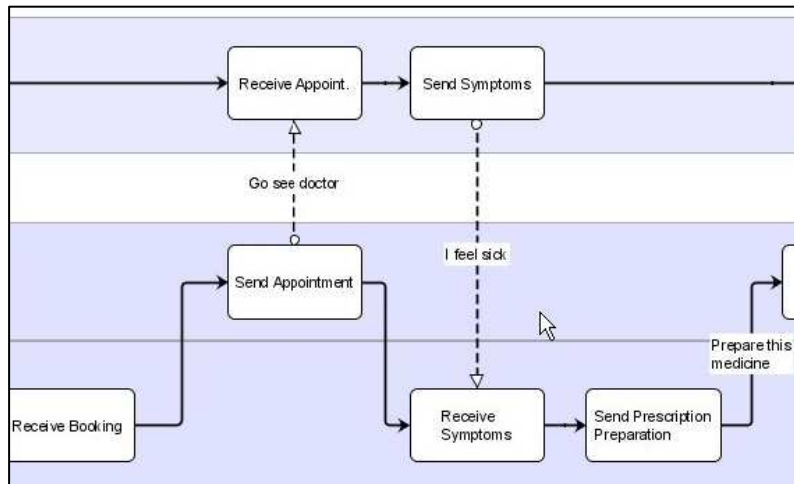
Name	Description	Parent Activity	Preceding Ac
10	10	REGULATION PRESSION	
10	10	PRELIMINAIRE REGULATION PRES...	
10	10	PRELIMINAIRE VENTIL GALLEY E...	
10	10	PNE S/PLANCHERS SOUTE C38 A ...	
10	10	MTG TUY SOUS PL SOUTE C38	
10	10	MTG TUY DISTRIB	
10	10	RMTR TUY SOUTE ELEC C18 D 10...	
10	10	RACC TUY C38 RAIN REPELLENT	
10	10	PROTECTION JONCTION - PB BP	



Manufacturing Plant Schedule



*

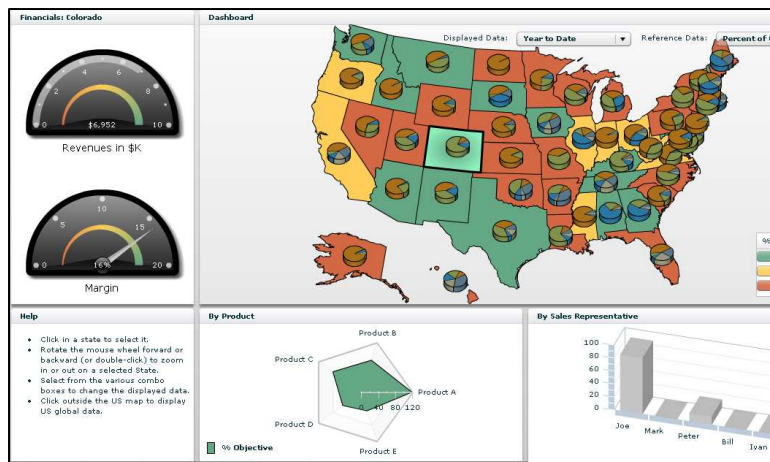


Goals

- Process Modelers
- Business dashboards

Features

- Pre-built, standards-based symbols
- “Smart layout”
- Ready-to-tailor editor
- Dashboard Builder
- Deploy to Desktop or Web



IBM Tivoli Dependency Discovery Manager



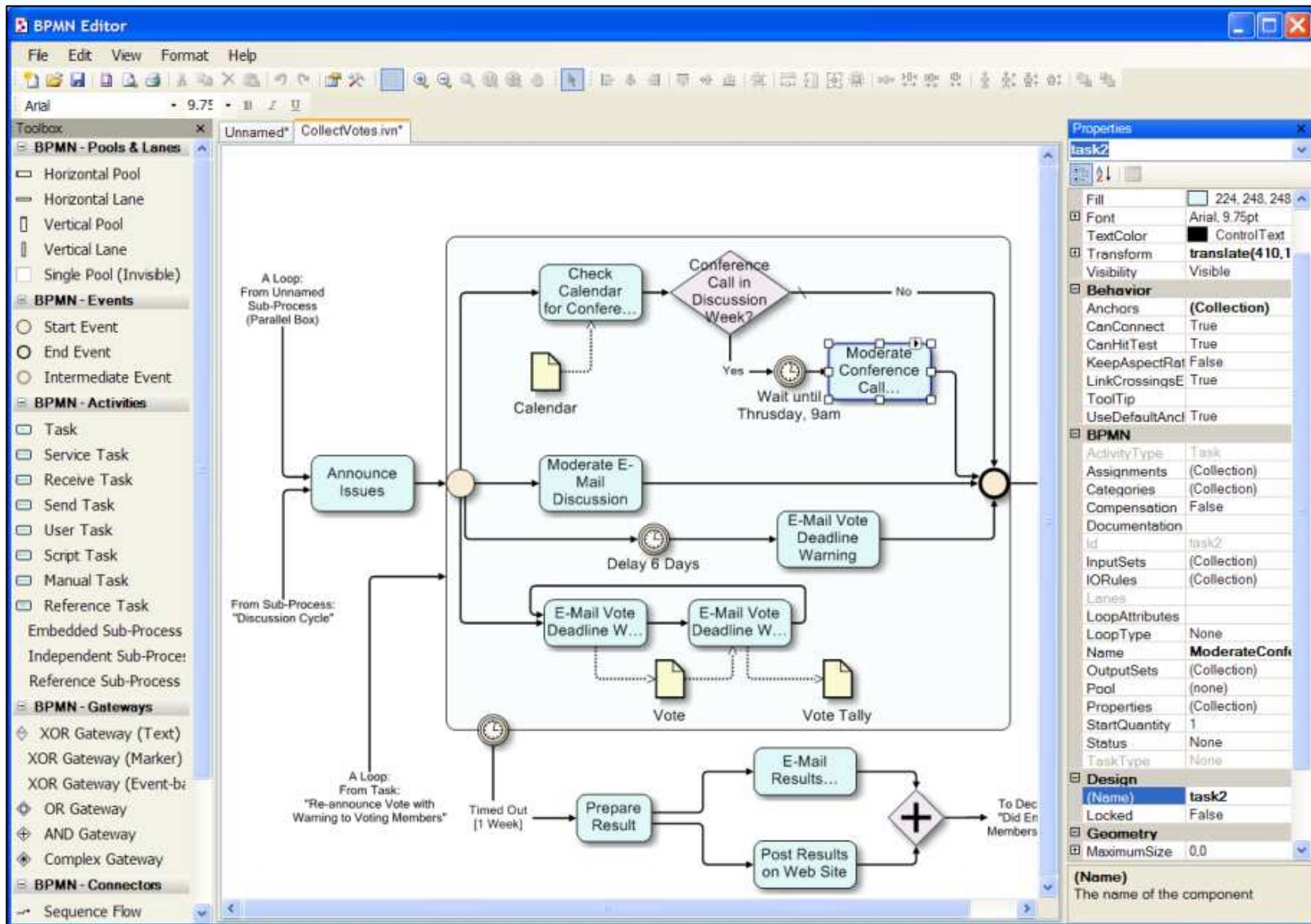
The screenshot displays the IBM Tivoli Application Dependency Discovery Manager interface within a Microsoft Internet Explorer browser window. The browser title is "http://demos.dfw.ibm.com - Tivoli Application Dependency Discovery Manager - Microsoft Internet Explorer". The application title bar reads "IBM Tivoli Application Dependency Discovery Manager - Version: Current".

The interface includes a menu bar (File, Edit, Display, Discovery, Topology, Analytics, Status Management, Windows, Help) and a toolbar. On the left, there is a "Discovered Components" tree under "Application Infrastructure" with sub-items like Clusters, Web Servers, J2EE Servers, Databases, Messaging Se, and Custom Servi. Below this are tabs for Discovery, Topology, Business Applications, Application Infrastructure, Physical Infrastructure, and Analytics. The "Business Applications" tab is active, showing a dependency graph with nodes for Logical Management, Billing, Order Management, and Order Management - Staging, connected to various database instances including Oracle, DB2, Sybase, and Microsoft SQL.

A context menu is open over the "Inventory" node, listing the following options:

- Show Details
- Show Software Topology
- Show Physical Topology
- Edit...
- Delete
- Inventory...
- Change History...
- Compare Components...
- Compare Across Versions...
- Show Dependencies
- Filter Dependency

The status bar at the bottom indicates "Username: smartoperator" and "Current View: 06/27/2006 11:04 EDT".

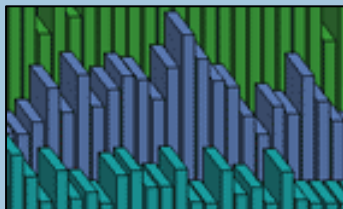


Focusing on the Products

The ILOG Visualization Products



Charts



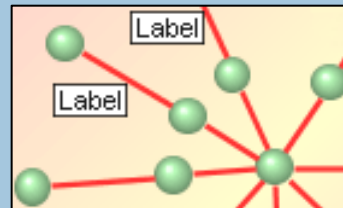
Gantt



Networks



Diagrams



Dashboards



Maps

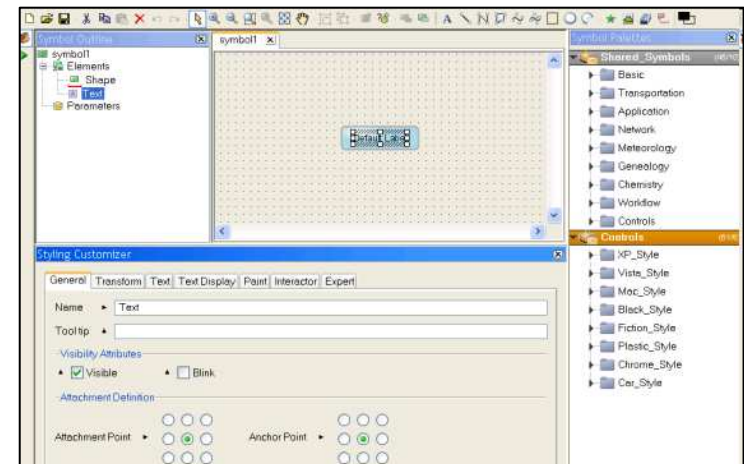


- IBM ILOG JViews
 - Diagrammer
 - Graph Layout for Eclipse
 - Telecom Graphic Objects
 - Charts
 - Gantt
 - Maps
 - Maps for Defense
- IBM ILOG Views
 - Views
 - Charts
 - Maps
 - DataAccess
- IBM ILOG for .NET
 - Diagram
 - Gantt
- IBM ILOG Elixir

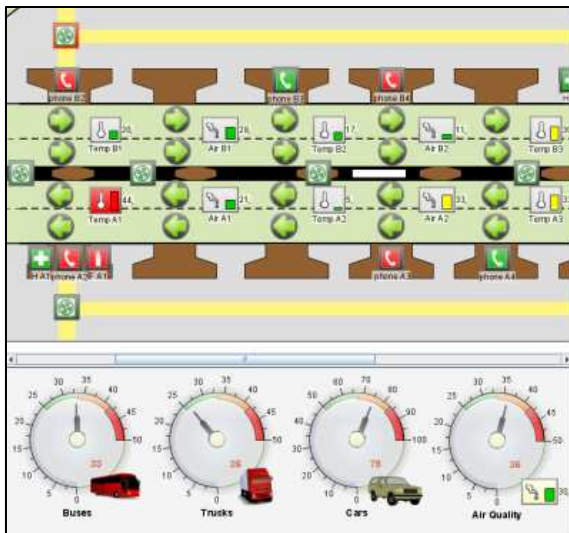
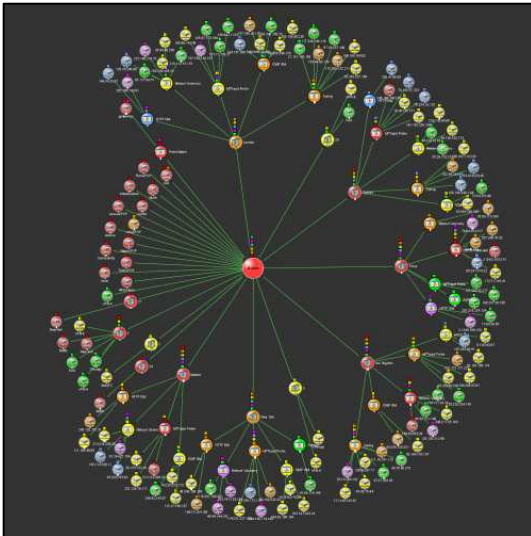
The ILOG Visualization Products



- Tailor the displays to your user's exact needs
 - Completely open API for drawing and interaction
 - Designer tool for development speed
 - Cascading style sheets for rapid customization
- Model-driven displays
 - MVC design pattern
- Architected to handle all problem sizes
 - Load-on-demand for huge data sets
- Deploy to your customer's platform
 - Java applet/application
 - AJAX DHTML (thin) clients + JavaScript
 - AJAX SVG clients
 - Flex
- Full printing support, JavaBeans, etc.

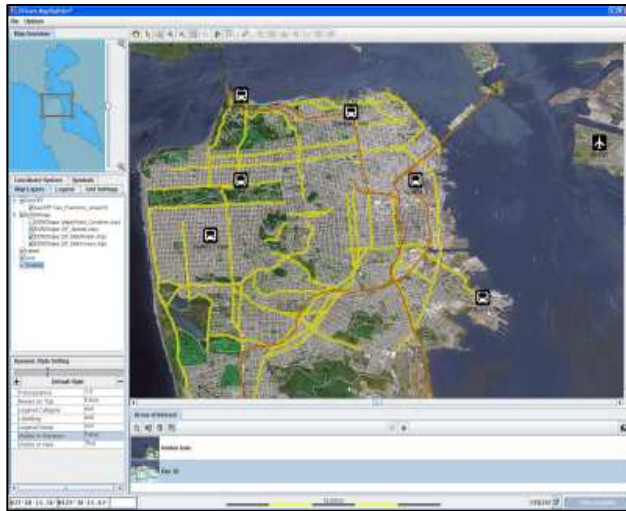


C++, Java, .NET, Flex

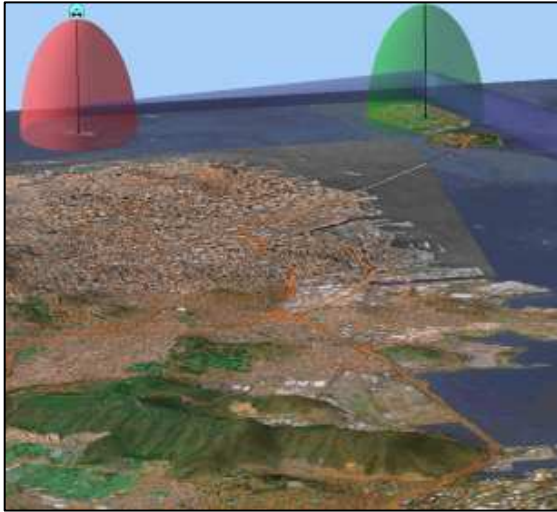


- Interactive diagrams, flowcharts, networks
- Complex diagrams kept readable
 - Graph layout algorithms
- BPM, SOA, and dashboard support
 - BPMN modeler
 - Custom data indicators
- Visual tool chain for fast development
 - Symbol editor
 - Dashboard editor
 - Visual Studio extensions for Diagram .NET
 - Eclipse integration
- Rich Internet Applications
 - AJAX: Editing and visualization
 - Flex: Orgchart, gauges

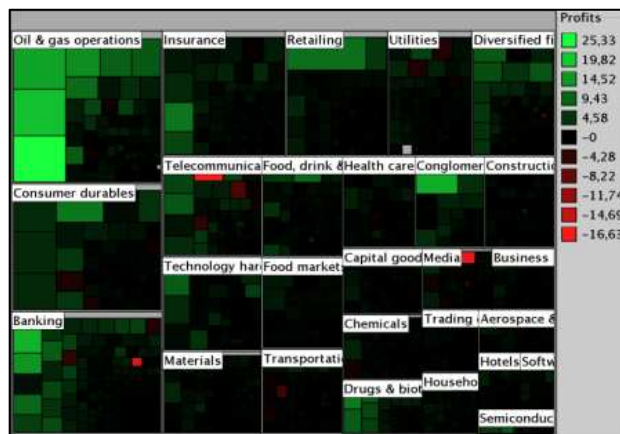
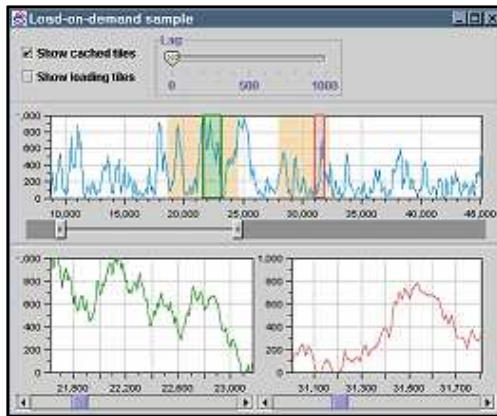
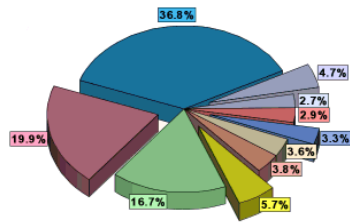
C++, Java, Flex



- Interactive high-performance maps
 - Map data fusion from most popular formats
 - Overlaid with animated objects
 - Multi-threaded load on demand
- Support most map formats
 - Shapefile, MID/MIF, Tiger/Line, GeoTIFF, GIF, JPEG, DTED, DXF, KML, KMZ, etc
 - Free maps CDROM
- Visual tool chain for fast development
 - Symbol editor
 - Map Builder
- Rich Internet Applications
 - Ajax support (JSF): Tiling for load-on-demand a-la Google Maps
 - Flex: Maps for dashboards



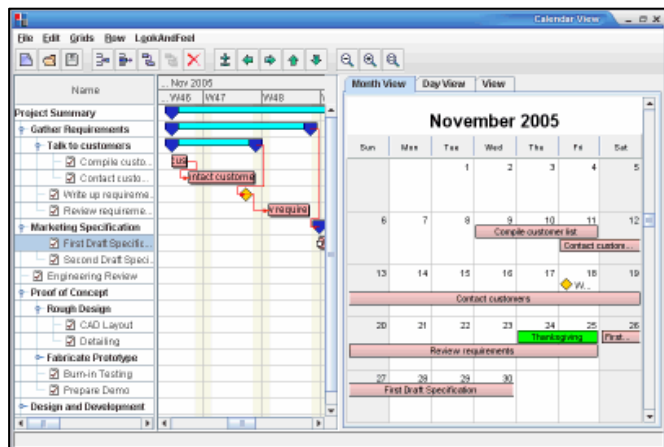
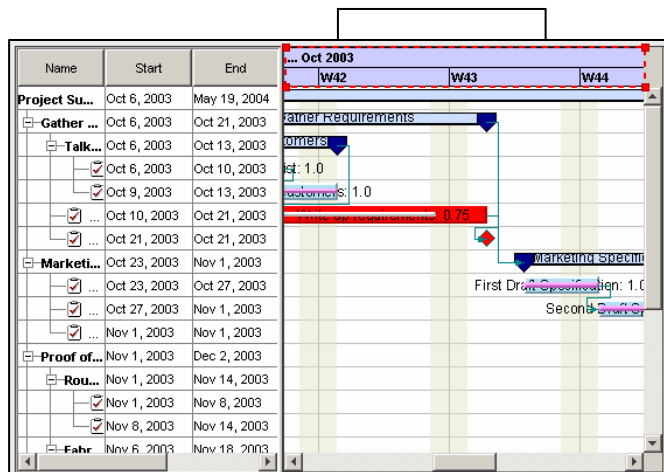
- Complement JViews Maps
- Military Map formats
 - CADRG, ASRP, USRP, S57/S52, DAFIF
- Military Symbol sets
 - NATO APP6a
- Terrain Analysis Features
 - Line of sight, area of visibility, terrain shading, etc.
- True 3D views
 - On the flight visualization
 - Fly-through
 - 3D symbology



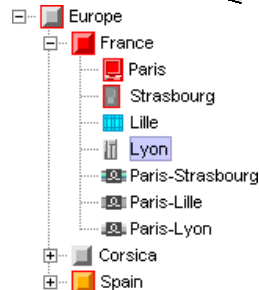
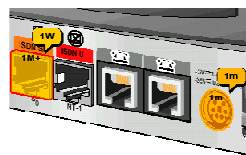
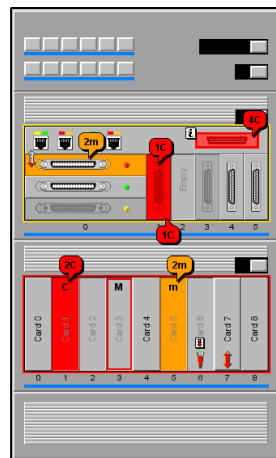
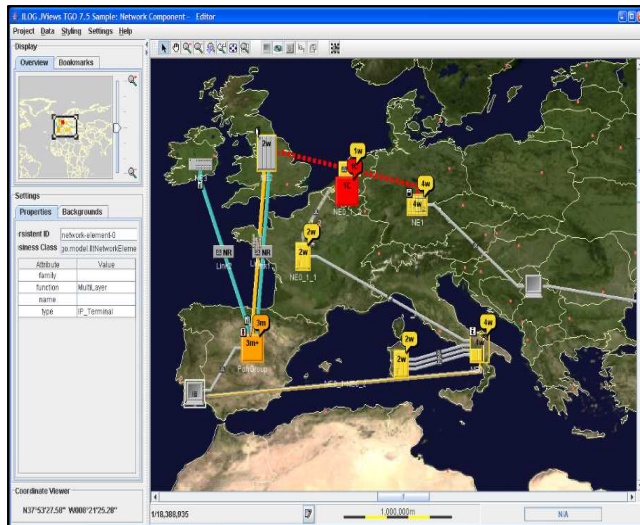
C++, Java, Flex

- Interactive high-performance charts
 - Wide variety of business, scientific, and data exploration charts
 - Real-time performance
 - Custom interaction
 - Scale to large data sets
- Visual tool for fast parameterization
 - Static and dynamic styling
 - At design time and at runtime
- Rich Internet Applications
 - Ajax support (JSF and DHTML)
 - Flex: 3D, radar chart, treemap, heatmap

C++, Java, .NET, Flex



- Interactive schedules and plans
 - Task or resource oriented views
 - Resource load chart
 - Calendar view for final user
 - Critical path computation
 - Navigation and filtering through tree table
 - Project Management Option in .NET – complements MS Project for portfolio management apps
- Visual tool for fast parameterization
 - With static and dynamic styling
 - Visual Studio extensions with Gantt for .NET
- Rich Internet Applications
 - Ajax support (JSF, ASP.NET/AJAX)
 - Flex: Resource, Gantt chart, Calendar



Object	Severity	Trend	Ack
Mux0	Cleared	Green arrow	✓
Mux0	Warning	Yellow arrow	✓
Mux0	Minor	Green arrow	✓
Mux0	Minor	Green arrow	✓
Mux1	Warning	Yellow arrow	✓
Mux1	Major	Red arrow	✓
Mux1	Warning	Yellow arrow	✓
Mux1	Indeterminate	Grey arrow	✓
Mux1	Major	Red arrow	✓
Mux1	Minor	Green arrow	✓
Mux2	Critical	Red arrow	✓
Mux2	Minor	Green arrow	✓
Mux2	Critical	Red arrow	✓

- Ultimate GUI for
 - Service monitoring
 - Network management
 - Equipment management
- Complete network visualization
 - Logical and physical views
 - Graph layout
 - Easy front-to-back integration
 - Unified look-and-feel
 - Supports many standards
 - Including OSS/J and TMF
- Ajax support
- Includes Diagrammer and Maps

- Saves development time
 - 80%+ of user interface development time
 - Includes many features that are difficult to create
 - Completely customizable
- Better End User experience
 - Displays that are more intuitive, offering better insight
 - More innovative displays
- Backed by a recognized software leader

“ILOG makes the possible easy, and the impossible, possible.”

- Please rate the usefulness of this webinar on a scale of 1-5 ...
 - 5 - Very useful
 - 4 - Somewhat useful
 - 3 - Neither positive nor negative
 - 2 - Not what I was looking for
 - 1 - Not useful at all
- Based on this presentation, do you have an interest in Visualization?
 - Yes
 - No
 - Not sure
- Is there anything else you would have liked to have seen covered in this webinar?
 - _____

Question & Answer



Please send follow-up questions to:
ilogvisu@us.ibm.com

Thank You!

Please send follow-up questions to:
ilogvisu@us.ibm.com

For any follow-up questions contact:
Julie Seltzer Firsty
408-991-7145
jfirsty@us.ibm.com