

IBM Express Runtime Quick Start Workshop

Lab 1 – Deploying a Solution

In this lab, we are going to run through the installation of an integrated solution (application and middleware components). Express Runtime uses the Deployment Wizard to perform the install. This process would normally be kicked off from a set of disk images that contain a packaged solution. Since we haven't exported a solution yet, we will have to jumpstart the Deployment Wizard and choose a sample solution to deploy.

1. Select **Start > Programs > IBM Express Runtime 2.2 > Deployment Wizard**, the resulting window looks like Figure 1-1.

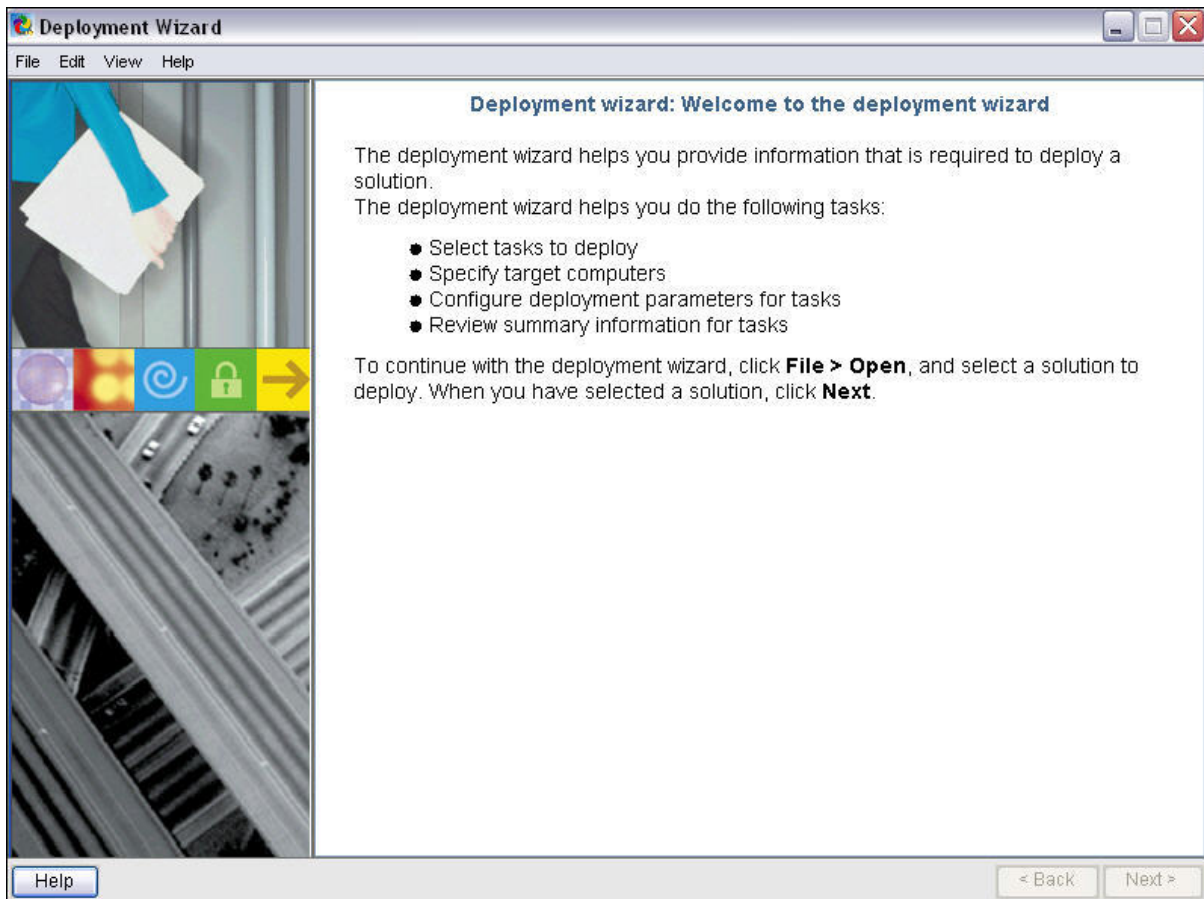


Figure 1-1 Deployment Wizard

2. From the menu, click **File -> Open**.

IBM Express Runtime Quick Start Workshop

Lab 1 – Deploying a Solution

- From the Open dialog (Figure 1-2), select IRU2_2SingleTargetSampleWin.ser and click **Open**.

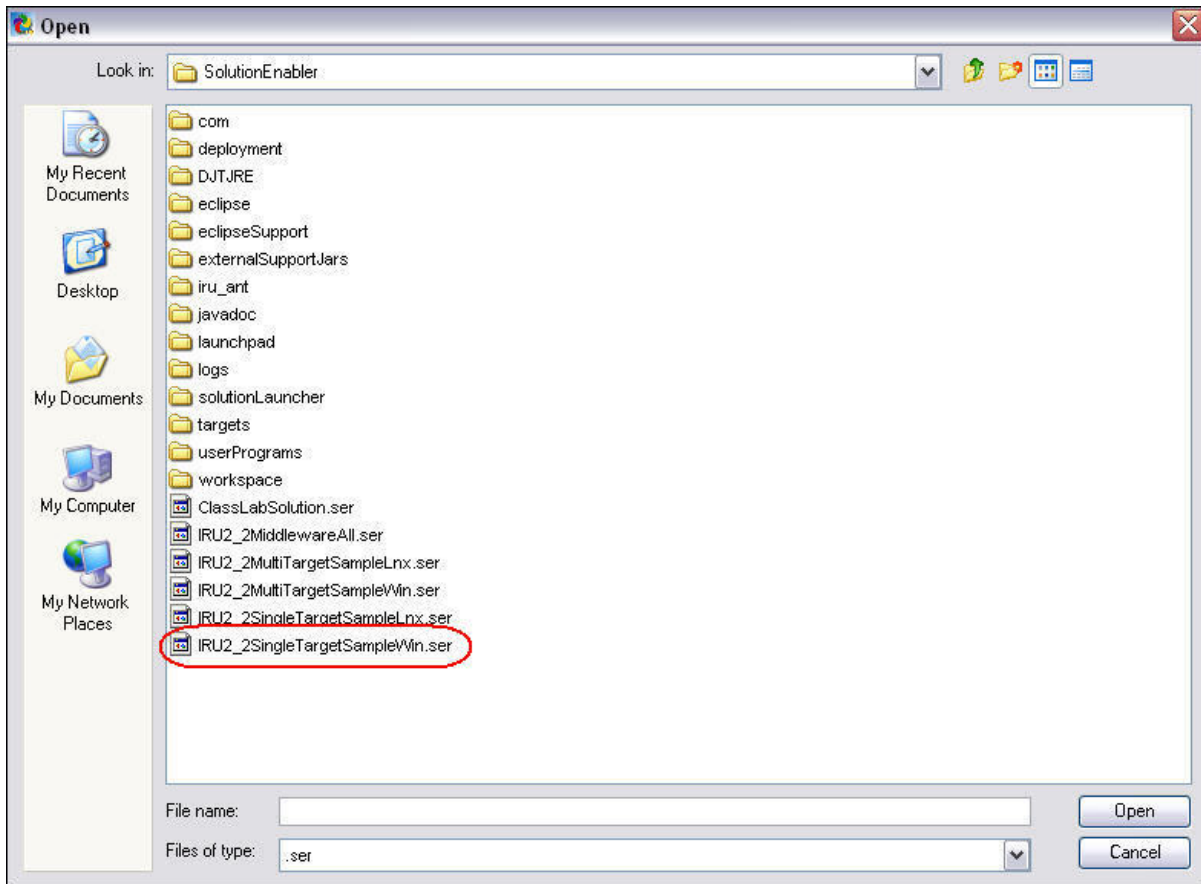


Figure 1-2 Open dialog

Note: Once you open this solution, the deployment wizard behaves the same way that it would if the install was kicked off from distribution media.

IBM Express Runtime Quick Start Workshop

Lab 1 – Deploying a Solution

4. You will be greeted with a **Welcome** page that describes the solution you are deploying (Figure 1-3). Click **Next**.

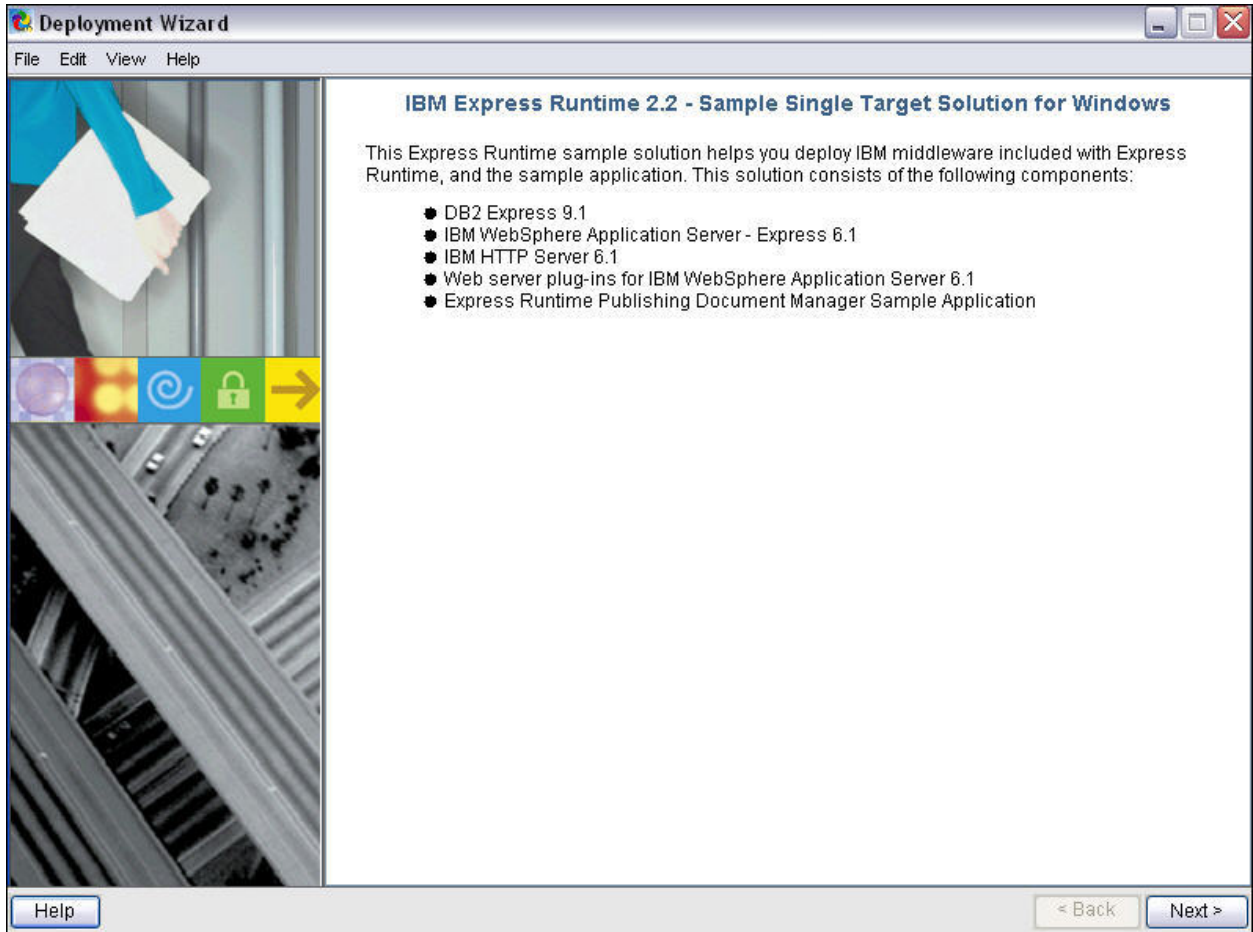


Figure 1-3 Sample application welcome screen

IBM Express Runtime Quick Start Workshop

Lab 1 – Deploying a Solution

5. On the task selection screen (Figure 1-4), select **Sample application and IBM middleware for Windows**. Click **Next**.

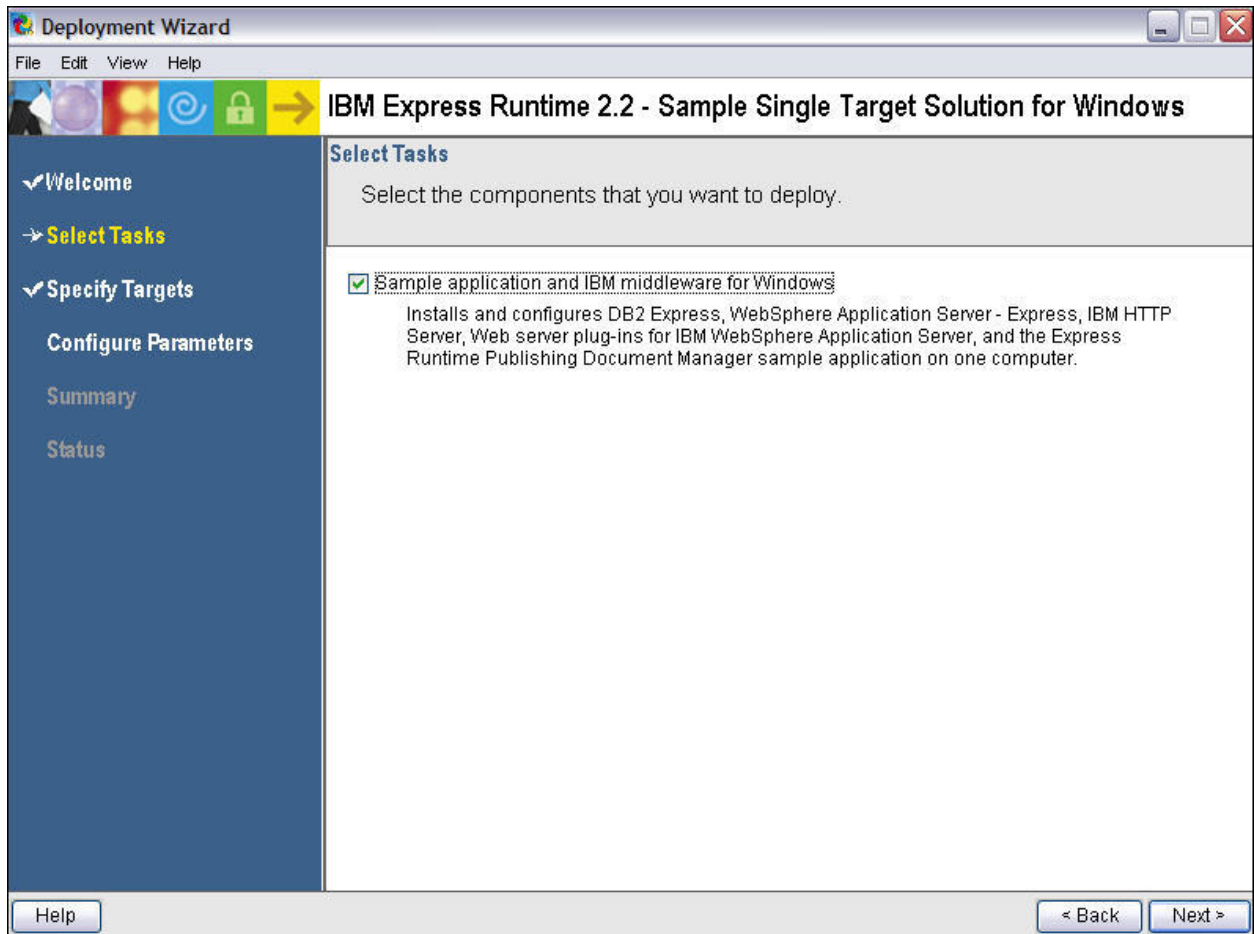


Figure 1-4 Task selection screen

Note: This task combines the Express Runtime Publishing Document Manager sample application and all the middleware components needed to run the sample. All the applications are deployed together as a unit to the same target.

IBM Express Runtime Quick Start Workshop

Lab 1 – Deploying a Solution

- For each task, you would be presented with a **Specify Target Computers** window (see Figure 1-5). You are required to provide hostname or IP address of the machine where the sample application and middleware components will be deployed.

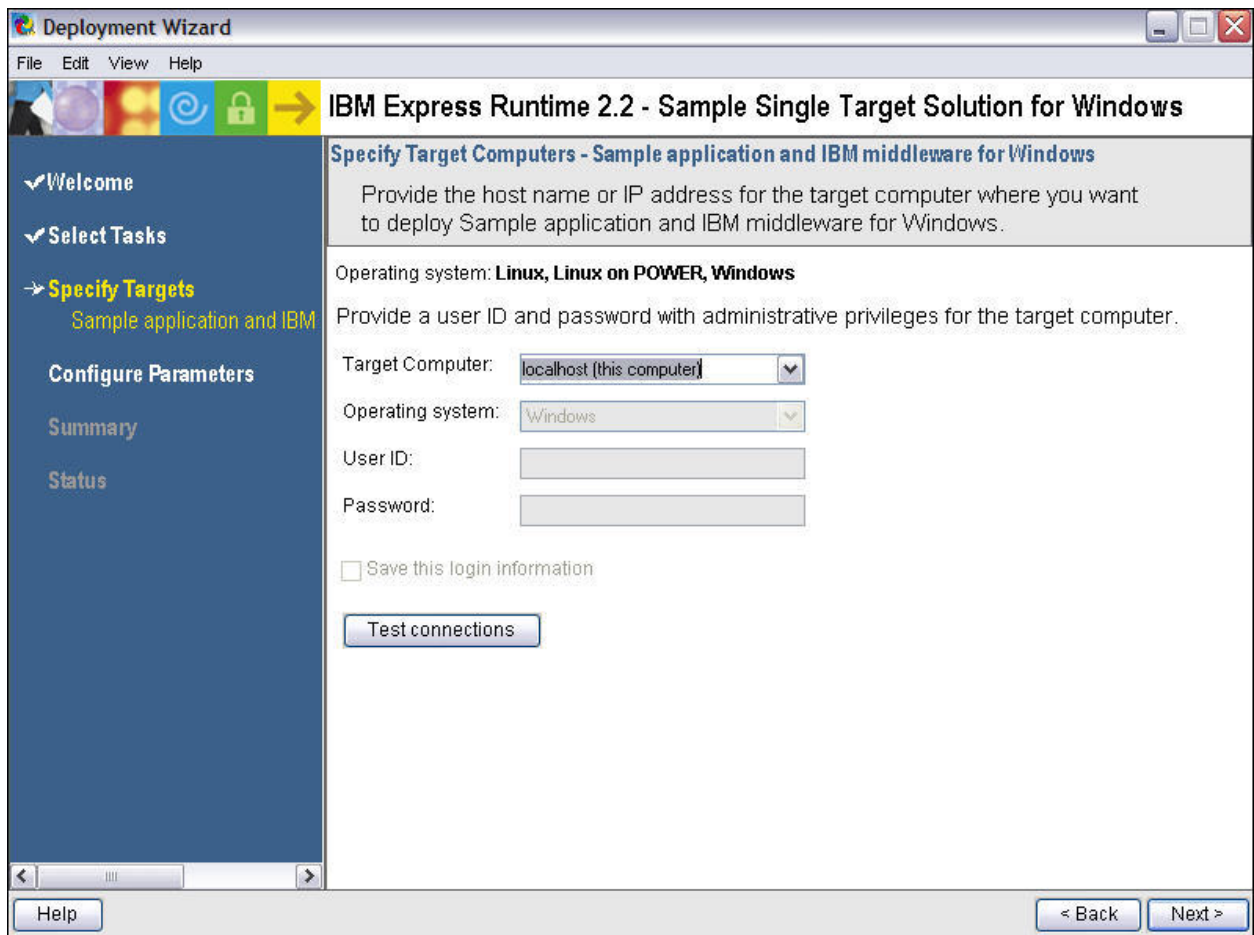


Figure 1-5 Specify Target screen

In this exercise, we will be doing a local deployment whereby everything will be deployed on the same machine where the solution file IRU2_2SingleTargetSampleWin.ser is located. By default, *localhost (this computer)* is already specified in **Target Computer**.

You may notice there is a **Test connections** button. You can use this button to test the connection across the network to the target computer that you have specified. You must have a user ID and password with Administrators authority on this target computer. Click on **Test connections** to see if the Deployment Wizard can deploy to the requested target machine.

- When you have finished testing your connections, make sure you have **localhost** as the target and click **Next**.

IBM Express Runtime Quick Start Workshop

Lab 1 – Deploying a Solution

- There is one **Configure Parameters** screen for each application, including the middleware components that we are going to deploy (unless there are no variables exposed for an application).

The first middleware component to configure is **DB2 Express**. You are asked to provide a DB2 Instance User ID and Password as well as a DB2 DAS User ID and Password, (which you have to scroll down to see). In this exercise, we will use **er22admin** for both IDs and passwords (see Figure 1-6).

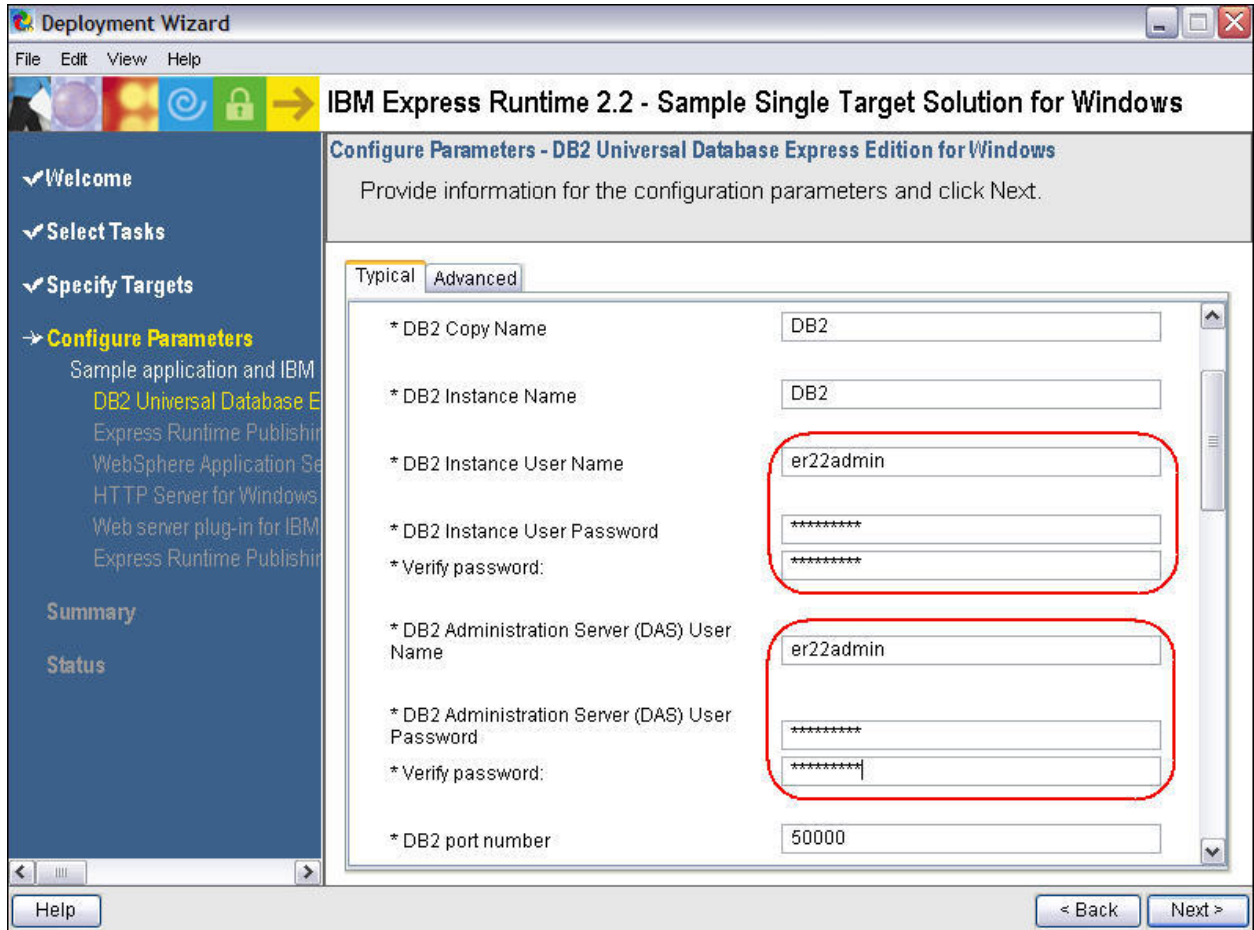


Figure 1-6 Configure parameters for DB2 Express

Note: As you page through these parameters screens, keep in mind that each of these variables are shown to the installer because that was specified in the wrappers. You may add or remove variables or make them read only depending on the needs of your solution.

- Accept the defaults for the remaining parameters. Click **Next**.

IBM Express Runtime Quick Start Workshop

Lab 1 – Deploying a Solution

- Next, you will see the **Configure Parameters – Express Runtime Publishing Document Manager DB2 Configuration for the Windows, Linux, and Linux on POWER operating systems**. Accept the defaults and click **Next**.
- Configure **WebSphere Application Server – Express**. Accept the defaults and click **Next**.
- Configure **IBM HTTP Server**. Accept the defaults and click **Next**.
- Configure **Web server plug-in for IBM WebSphere Application Server**. Accept the defaults and click **Next**.
- Configure the **Sample application – Publishing Document Manager** (see Figure 1-7). Take **special note** of the read only fields that have been shared between applications – the installer only has to enter the information once.
- Accept the defaults and click **Next**.

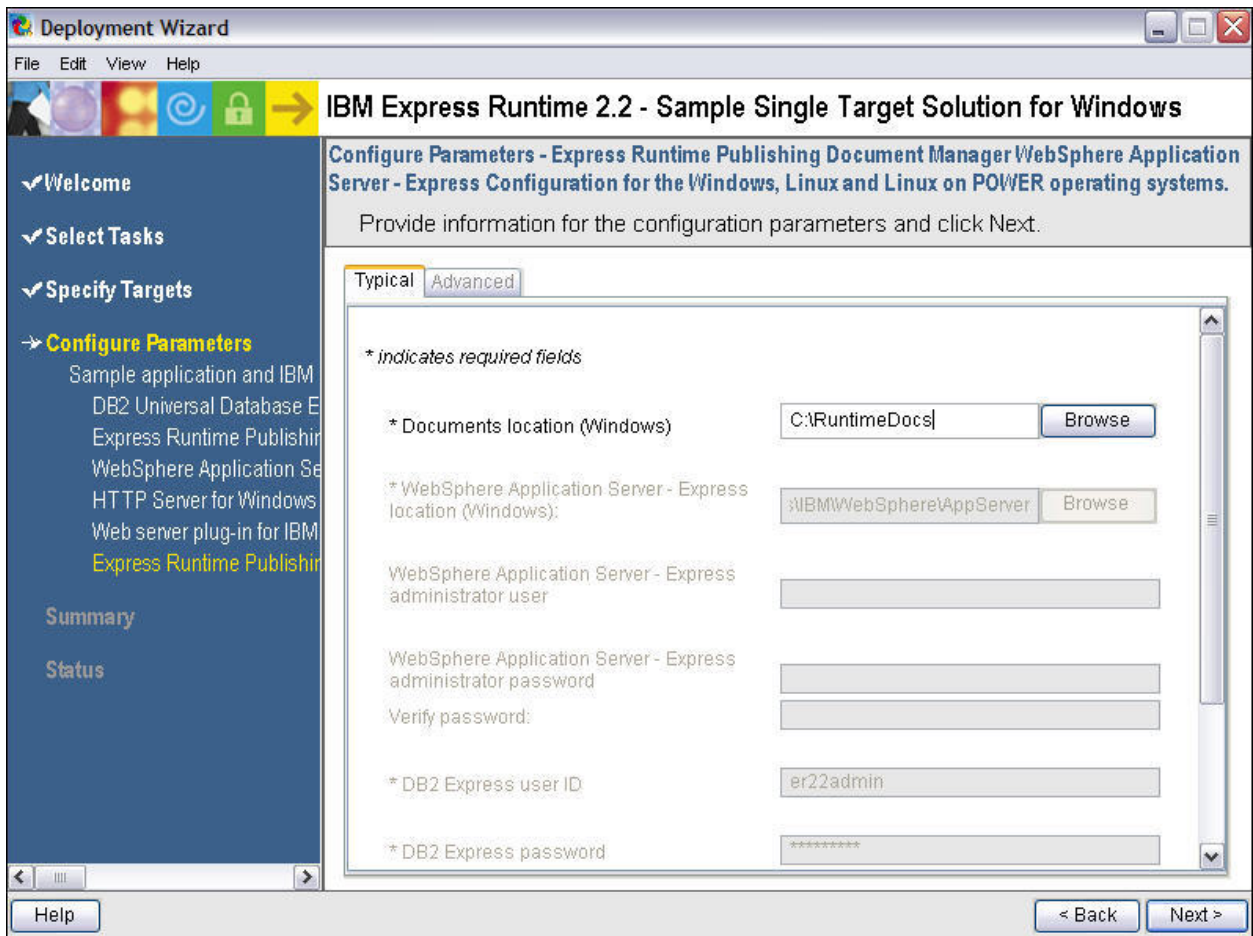


Figure 1-7 Configure parameters for Express Runtime Publishing Document Manager

IBM Express Runtime Quick Start Workshop

Lab 1 – Deploying a Solution

16. The summary panel as shown in Figure 1-8 provides information on the tasks you selected in the previous steps, hostname or IP address of the target machine as well as the estimated time needed to deploy all tasks. Click **Deploy all** to start the deployment of **Sample application and IBM middleware for Windows**.

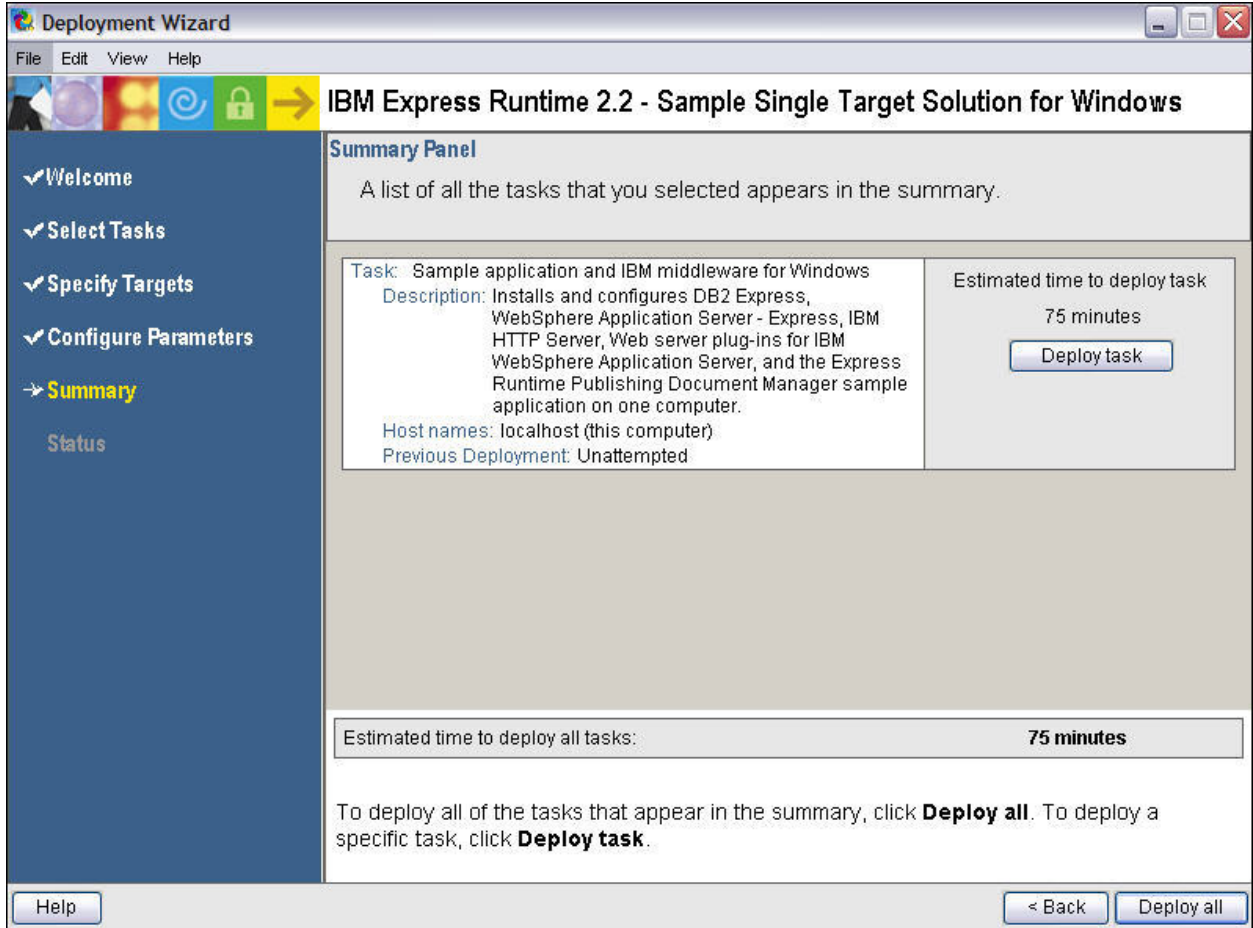


Figure 1-8 Summary Panel

IBM Express Runtime Quick Start Workshop

Lab 1 – Deploying a Solution

17. A screen similar to Figure 1-9 will be displayed when the deployment of sample application and IBM middleware starts.

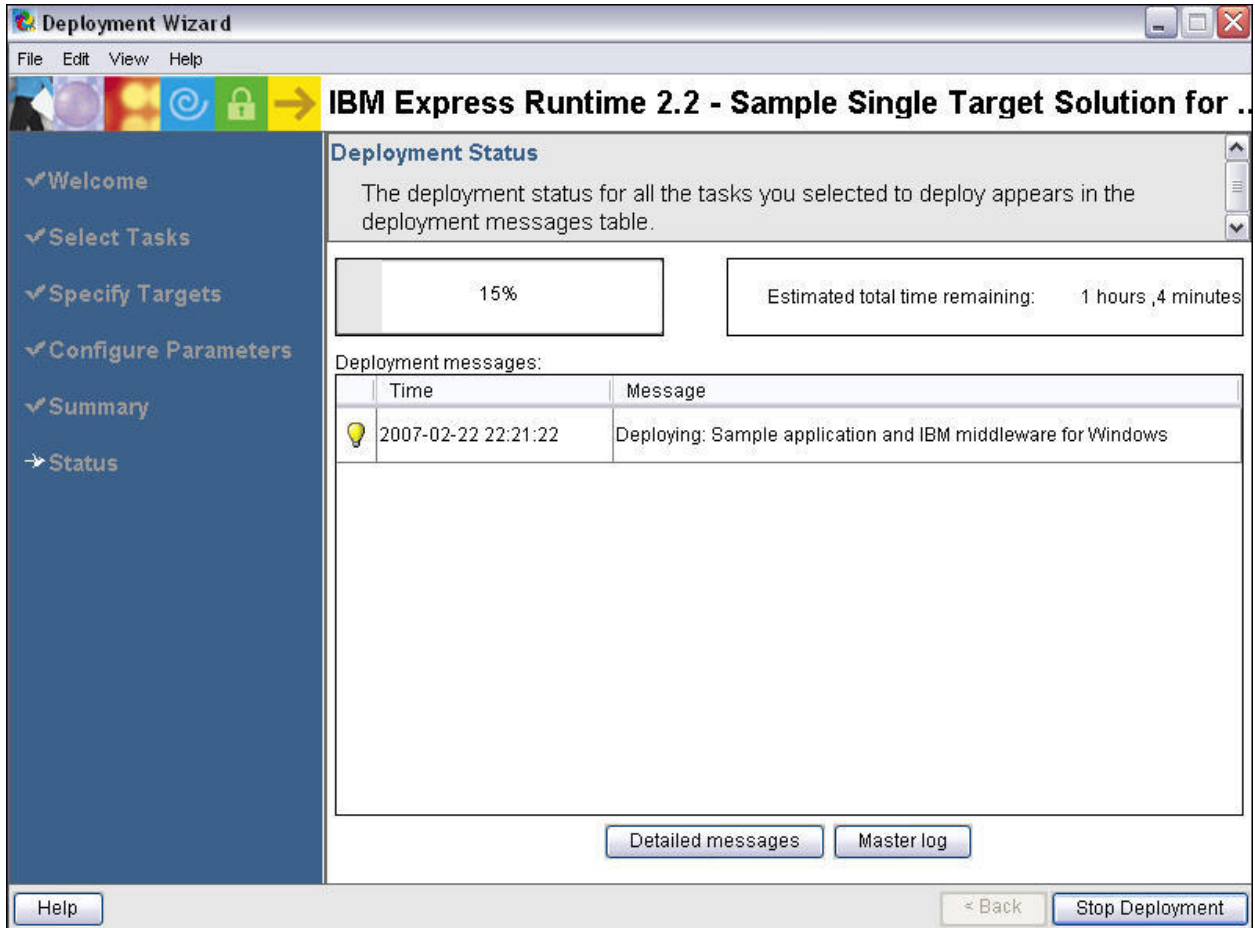


Figure 1-9 Deployment Status

Note: the first time you attempt to deploy a solution, you will see popups as the deployment packages are being created. This is a one-time occurrence for each solution.

You can check the messages generated by the Deployment Wizard from time to time to see if the installation of each component is successful by clicking on the **Master log** button. The same log file can be retrieved from

C:\<ER_installation_directory>\SolutionEnable\logs\IRU_DeploymentWizard.log

Alternatively, you can use the **Detailed messages** button to view the progress of the deployment.

The deployment will take approximately 15 minutes because the middleware components have already been deployed to your machine..

IBM Express Runtime Quick Start Workshop

Lab 1 – Deploying a Solution

18. A screen similar to Figure 1-10 will be displayed when the deployment finishes for all the components without any errors.

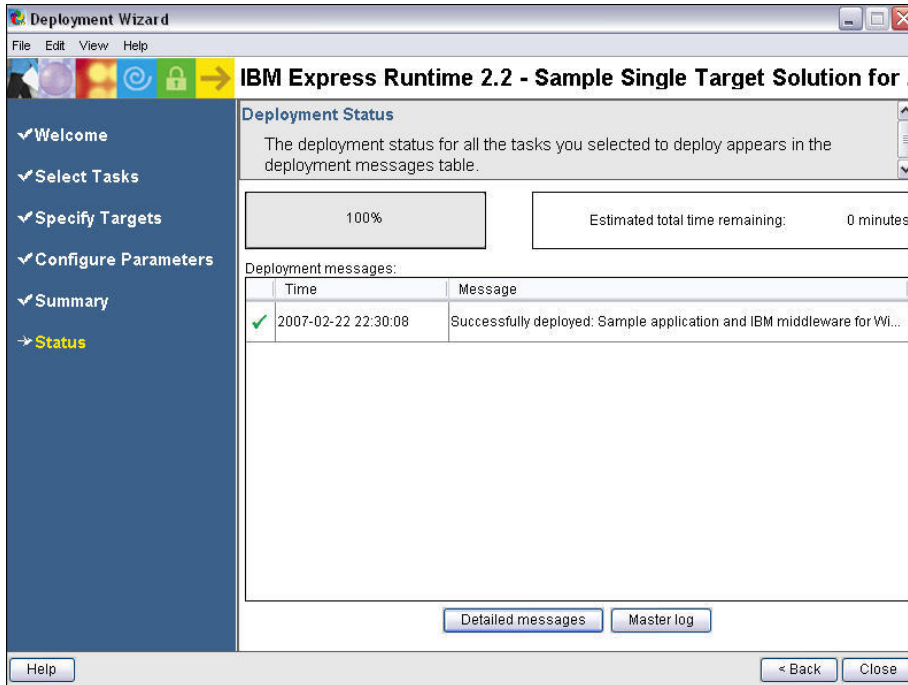


Figure 1-10 Deployment successful

19. A screen similar to Figure 1-11 will be displayed if you click on **Detailed messages**.

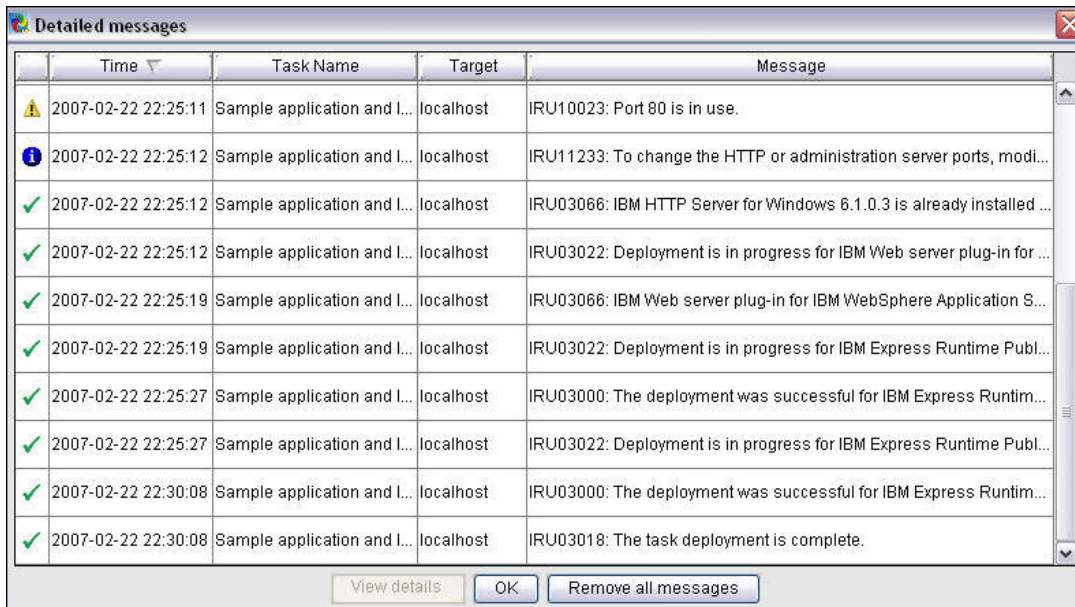


Figure 1-11 Detailed message

Note: the yellow and blue icons at the top of the list indicate informational messages. In this case, they appear because in order to save time in the labs, the middleware components have already been installed on your machine. The IBM HTTP Server is the application that is already using Port 80, so nothing further needs to be done.

IBM Express Runtime Quick Start Workshop

Lab 1 – Deploying a Solution

20. Click **OK** to close the **Detailed message** dialog.
21. Click on **Master log** to see how information is gathered from all the log files and combined to show you the results of the deploy. After you finish browsing through the log, close the log window.
22. Click **Close** to close the Deployment Wizard. You will be asked if you want to save your changes, but you do not need to save the configuration information you entered at this time, so click **No**.
23. Next, let's move on to test the Publishing Document Manager application. Open a browser window (Internet Explorer), type in the following URL - <http://localhost:9080/RuntimeDocumentMgmt/>. The application should execute, as shown below.

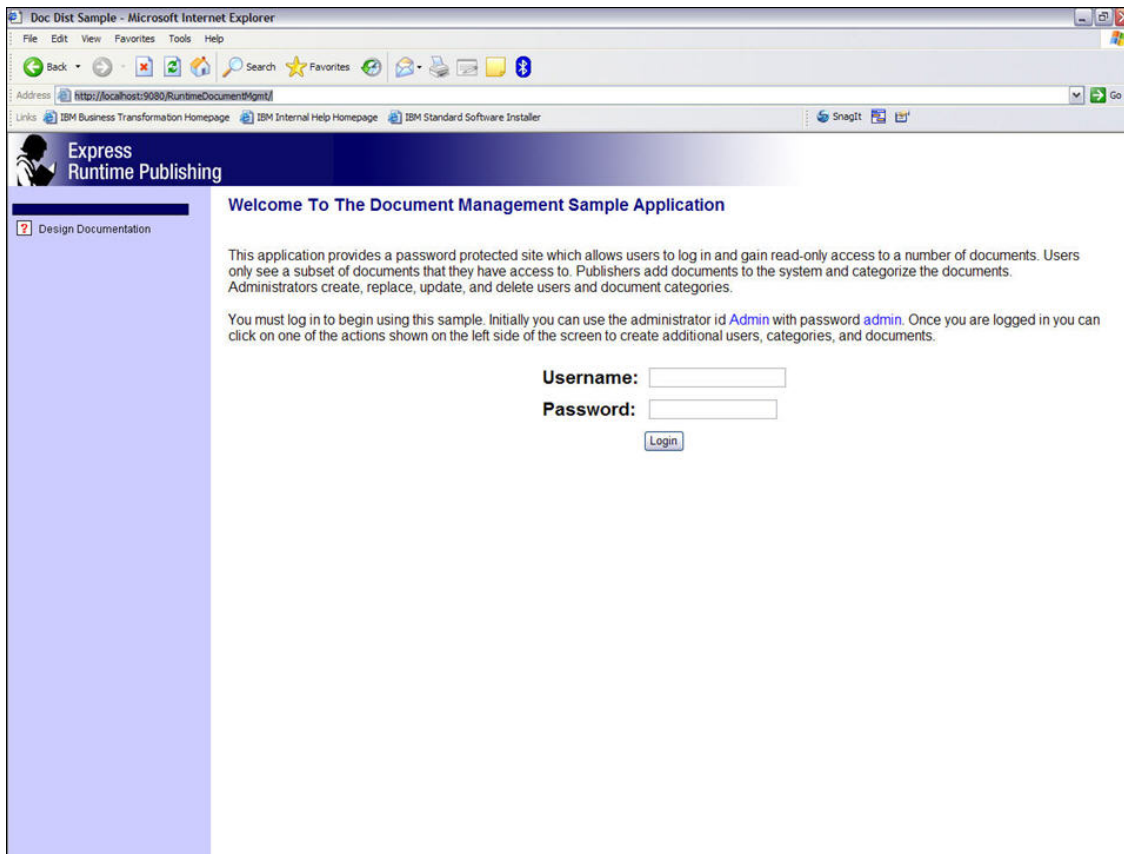


Figure 1-12 Publishing Document Manager page

Congratulations! You have successfully deployed WebSphere Application Server, HTTP Server, DB2 Express and the Publishing Document Manager application; configured them to work together and it's not even lunch time.