



IBM Software Group

Installing IBM Express Runtime

IBM Virtual Innovation Center



IBM Express Runtime

© 2005 IBM Corporation

Notices

This information was developed for products and services offered in the U.S.A.

Note to U.S. Government Users Restricted Rights -- Use, duplication or disclosure restricted by GSA ADP Schedule Contract with IBM Corp.

IBM may not offer the products, services, or features discussed in this document in other countries. Consult your local IBM representative for information on the products and services currently available in your area. Any reference to an IBM product, program, or service is not intended to state or imply that only that IBM product, program, or service may be used. Any functionally equivalent product, program, or service that does not infringe any IBM intellectual property right may be used instead. However, it is the user's responsibility to evaluate and verify the operation of any non-IBM product, program, or service.

IBM may have patents or pending patent applications covering subject matter described in this document. The furnishing of this document does not give you any license to these patents. You can send license inquiries, in writing, to:

IBM Director of Licensing, IBM Corporation, North Castle Drive Armonk, NY 10504-1785 U.S.A.

The following paragraph does not apply to the United Kingdom or any other country where such provisions are inconsistent with local law: INTERNATIONAL BUSINESS MACHINES CORPORATION PROVIDES THIS PUBLICATION "AS IS" WITHOUT WARRANTY OF ANY KIND, EITHER EXPRESS OR IMPLIED, INCLUDING, BUT NOT LIMITED TO, THE IMPLIED WARRANTIES OF NON-INFRINGEMENT, MERCHANTABILITY OR FITNESS FOR A PARTICULAR PURPOSE. Some states do not allow disclaimer of express or implied warranties in certain transactions, therefore, this statement may not apply to you.

This information could include technical inaccuracies or typographical errors. Changes are periodically made to the information herein; these changes will be incorporated in new editions of the publication. IBM may make improvements and/or changes in the product(s) and/or the program(s) described in this publication at any time without notice.

Any references in this information to non-IBM Web sites are provided for convenience only and do not in any manner serve as an endorsement of those Web sites. The materials at those Web sites are not part of the materials for this IBM product and use of those Web sites is at your own risk.

IBM may use or distribute any of the information you supply in any way it believes appropriate without incurring any obligation to you.

Information concerning non-IBM products was obtained from the suppliers of those products, their published announcements or other publicly available sources. IBM has not tested those products and cannot confirm the accuracy of performance, compatibility or any other claims related to non-IBM products. Questions on the capabilities of non-IBM products should be addressed to the suppliers of those products.

This information contains examples of data and reports used in daily business operations. To illustrate them as completely as possible, the examples include the names of individuals, companies, brands, and products. All of these names are fictitious and any similarity to the names and addresses used by an actual business enterprise is entirely coincidental.

COPYRIGHT LICENSE:

This information contains sample application programs in source language, which illustrates programming techniques on various operating platforms. You may copy, modify, and distribute these sample programs in any form without payment to IBM, for the purposes of developing, using, marketing or distributing application programs conforming to the application programming interface for the operating platform for which the sample programs are written. These examples have not been thoroughly tested under all conditions. IBM, therefore, cannot guarantee or imply reliability, serviceability, or function of these programs. You may copy, modify, and distribute these sample programs in any form without payment to IBM for the purposes of developing, using, marketing, or distributing application programs conforming to IBM's application programming interfaces.

Trademarks

The following terms are trademarks of the International Business Machines Corporation in the United States, other countries, or both:

DB2®

IBM®

POWER™

POWER5™

Rational®

WebSphere®

The following terms are trademarks of other companies:

Intel, Intel Inside (logos), MMX, and Pentium are trademarks of Intel Corporation in the United States, other countries, or both.

Microsoft, Windows, Windows NT, and the Windows logo are trademarks of Microsoft Corporation in the United States, other countries, or both.

Java and all Java-based trademarks and logos are trademarks or registered trademarks of Sun Microsystems, Inc. in the United States, other countries, or both.

UNIX is a registered trademark of The Open Group in the United States and other countries.

SET, SET Secure Electronic Transaction, and the SET Logo are trademarks owned by SET Secure Electronic Transaction LLC.

Other company, product, and service names may be trademarks or service marks of others.

Objectives

- The objectives of this module are to help you:
 - Understand the Express Runtime V2.1 installation process
 - Understand the prerequisites
 - Install Express Runtime
 - Uninstall Express Runtime

Agenda

- Installation
 - Prerequisites
 - Express Runtime v2.1
- Uninstall
 - Express Runtime v2.1
 - Other products and components

Installation

The building blocks of Express Runtime

- Express Runtime 2.1 includes the images of the following middleware components:
 - WebSphere Application Server - Express 6.0
 - DB2 UDB Express 8.2
 - IBM HTTP Server 6.0
 - IBM WebSphere HTTP Plug-in
- Express Runtime 2.1 provides the following tools:
 - Express Runtime Developer
 - Solution Launcher
 - Deployment Wizard
 - Express Runtime console

Operating System Requirements

Platform	Operating System	Development or Deployment	Deployable as Target OS?
Windows®	Windows XP Professional SP™ 2	both	No
	Windows 2000 Server SP4	both	Yes
	Windows 2000 Advanced Server SP4	both	Yes
	Windows 2000 Professional SP3	both	Yes
	Windows Server 2003, Standard Edition SP1	both	Yes
	Windows Server 2003, Enterprise Edition SP1	both	Yes
Linux™ (Intel™ platforms only)	Red Flag Advanced Server 4.1	deployment only	Yes
	Red Hat Enterprise Linux 3.0 WS/AS/ES	both	Yes
	SUSE LINUX Enterprise Server 8.0	deployment only	Yes
	SUSE LINUX Enterprise Server 9.0	both	Yes
Linux (IBM® POWER5™ processor-based technology systems only)	Linux on POWER™ (using SUSE LINUX Enterprise Server 8.0, SUSE LINUX Enterprise Server 9.0, or Red Hat Enterprise Linux AS 3.0)	deployment only	Yes
OS/400®	V5R2	neither	Yes
i5/OS™	V5R3	neither	Yes

Microsoft Windows: Development platform requirements

- **A minimum of 512 MB of memory; 1 GB recommended.**
- **At minimum, an Intel(R) Pentium(R) III class processor with a minimum clock speed of 600 MHz. A Pentium® IV class processor with a minimum clock speed of 1.2 GHz recommended.**
- **The following network support must be configured when deploying solutions to network-attached target computers:**
 - TCP/IP
 - DNS
- **A local area network (LAN) connection.**
- **An SVGA monitor with a minimum 1024 x 768 video resolution configured to display a minimum color depth of 256 colors.**
- **Internet Explorer 6.0 SP 1+ Web browser to view the online documentation and readme.**
- **Approximately 13 GB of disk space to install and run Express Runtime. Refer to the readme for complete disk space requirements.**
- **Administrative authority (required for product installation and uninstallation).**
- **Eclipse versions supported - based on the following:**
 - IES - Eclipse Full SDK - 3.0
 - eclipse.org - Eclipse SDK - 3.0

Linux: Development platform requirements

- **A minimum of 512 MB of memory; 1 GB recommended.**
- **At minimum, an Intel(R) Pentium(R) III class processor with a minimum clock speed of 600 MHz. A Pentium IV class processor with a minimum clock speed of 1.2 GHz recommended.**
- **The following network support must be configured when deploying solutions to network-attached target computers:**
 - TCP/IP
 - DNS
- **A LAN connection.**
- **An SVGA monitor with a minimum 1024 x 768 video resolution configured to display a minimum color depth of 256 colors.**
- **Any Linux supported video card that supports the resolution requirements.**
- **Mozilla 1.4 Web browser to view online documentation and readme.**
- **Approximately 13 GB of disk space to install and run Express Runtime. Refer to the readme for complete disk space requirements.**
- **Administrative authority (required for product installation and uninstallation).**
- **Eclipse versions supported - based on the following:**
 - IES - Eclipse Full SDK - 3.0
 - eclipse.org - Eclipse SDK - 3.0

Types of installation

- **There are two ways to install Express Runtime:**
 - Using the InstallShield Wizard
 - Silent installation using the response file

GUI installation options

- **Install IBM Express Runtime**
 - Typical installation
 - Install development tools, Deployment Wizard and documentation. Also allows you to select target platforms for the middleware components.
 - Deployment Wizard only
 - Install the Deployment Wizard and documentation. Also allows you to select the target platforms of the middleware components for deployment.
- **Install only the middleware components**

GUI installation from a CD or network

- Windows only: If autorun is enabled, the setup files are unpacked automatically and the Launchpad window starts automatically from the installation CD.
- If autorun isn't enabled and for other supported platforms, run the following command from CD #1:
 - Windows: `WindowsLaunchpad.exe`
 - Linux (Intel): `LinuxLaunchpad`
 - Linux on POWER: `LinuxPPCLaunchpad`
- Select the components to install
- Specify the installation location
- The installation checks for other Express Runtime installations

Silent installation

- Edit a response file
 - Use the provided sample response file (IRU_setup.iss on CD #1), as a starting point for your custom response file.
- Run a command located on CD #1 from the command line:
 - Windows: `WindowsSetup.exe`
 - Linux (Intel): `LinuxSetup`
 - Linux on Power: `LinuxPPCSetup`
- Pass your response file as an argument. For example, on Windows, enter:

```
WindowsSetup.exe -options  
x: /<your_directory>/IRU_setup.iss
```

GUI installation

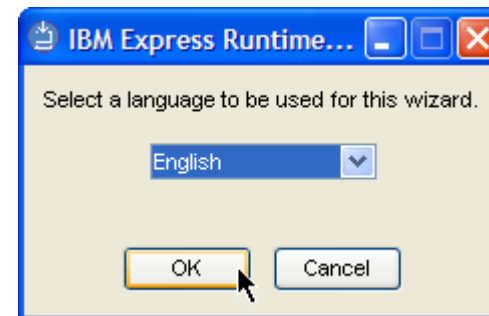
LaunchPad options

- **Select Install**



Selecting the language for installation

- **Select the language for the Express Runtime installation.**



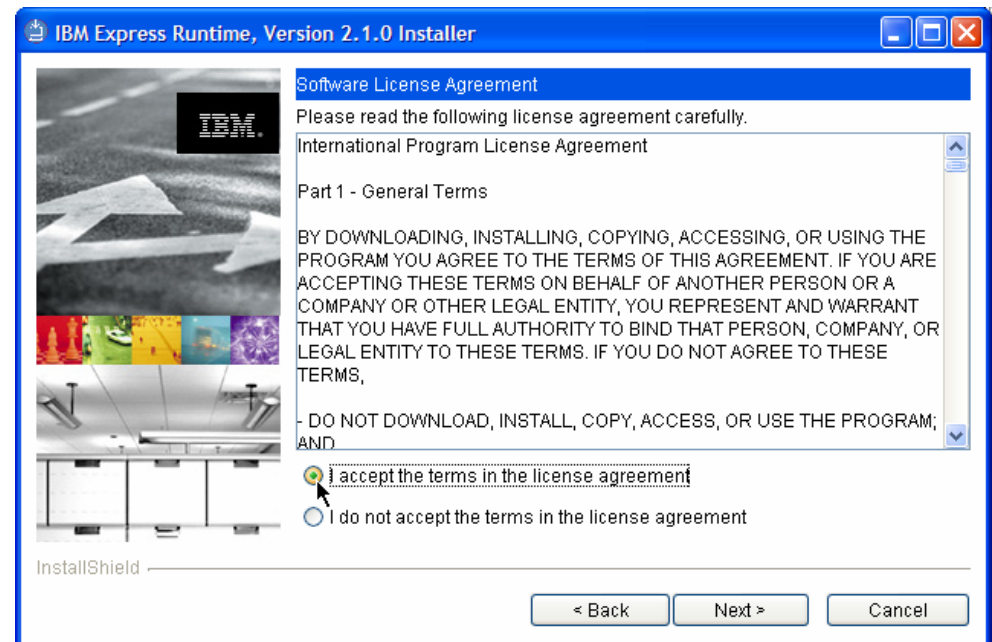
Welcome window

- Click **Next** to continue.



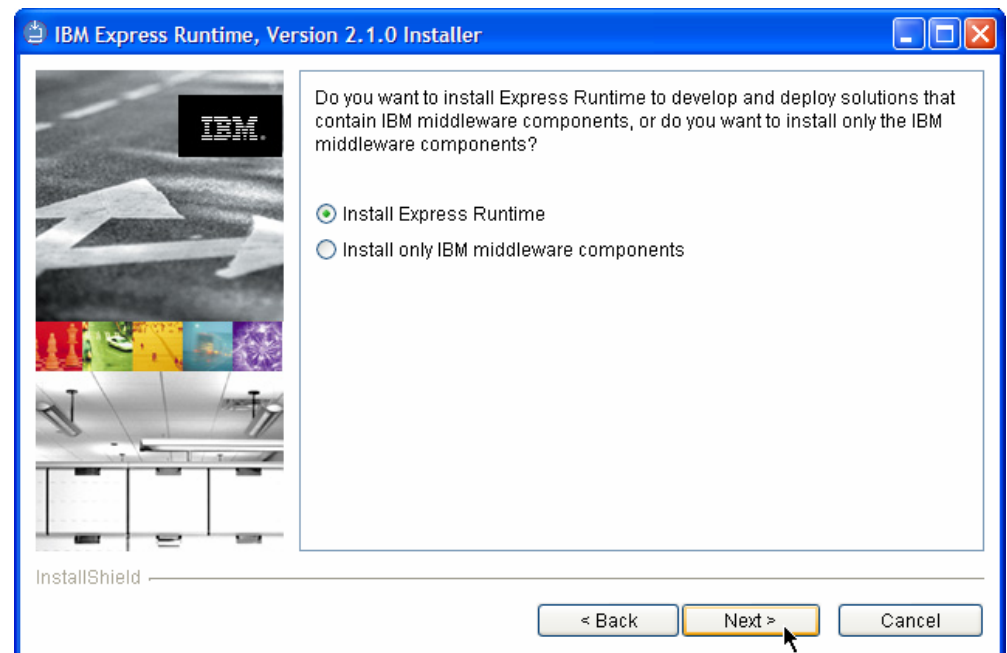
Software License Agreement

- **Read and accept the Software License Agreement and click [Next](#).**



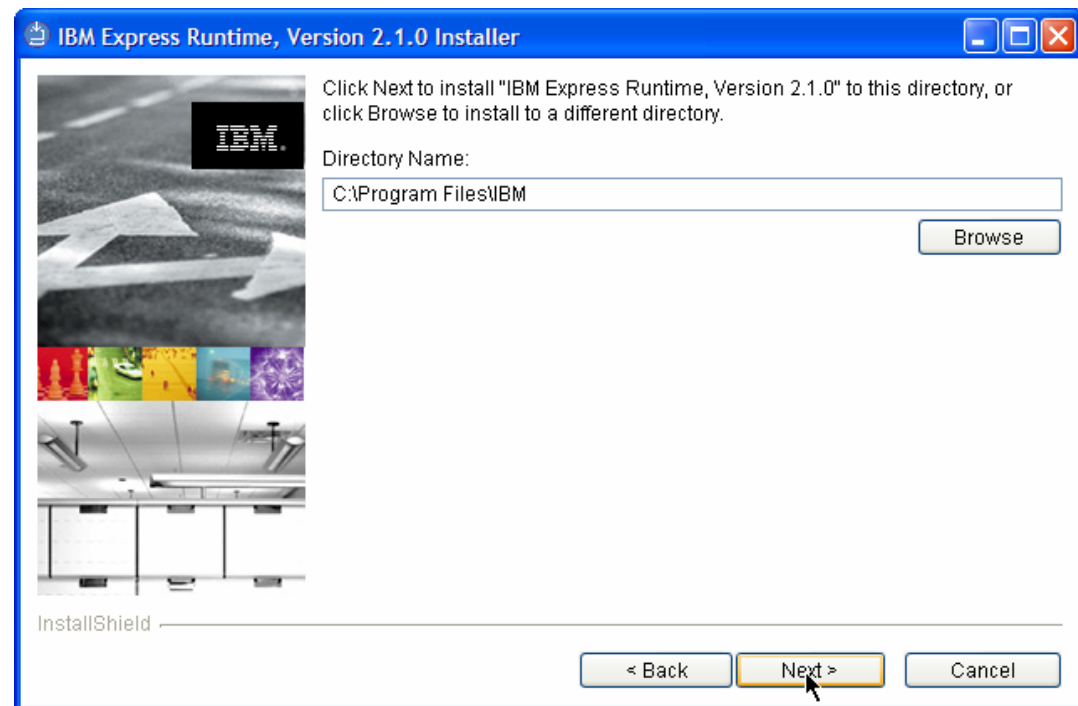
Development or deployment platform

- If you plan to use your system as the development platform, use the default installation option.
- If you want to install the middleware, select the second option.



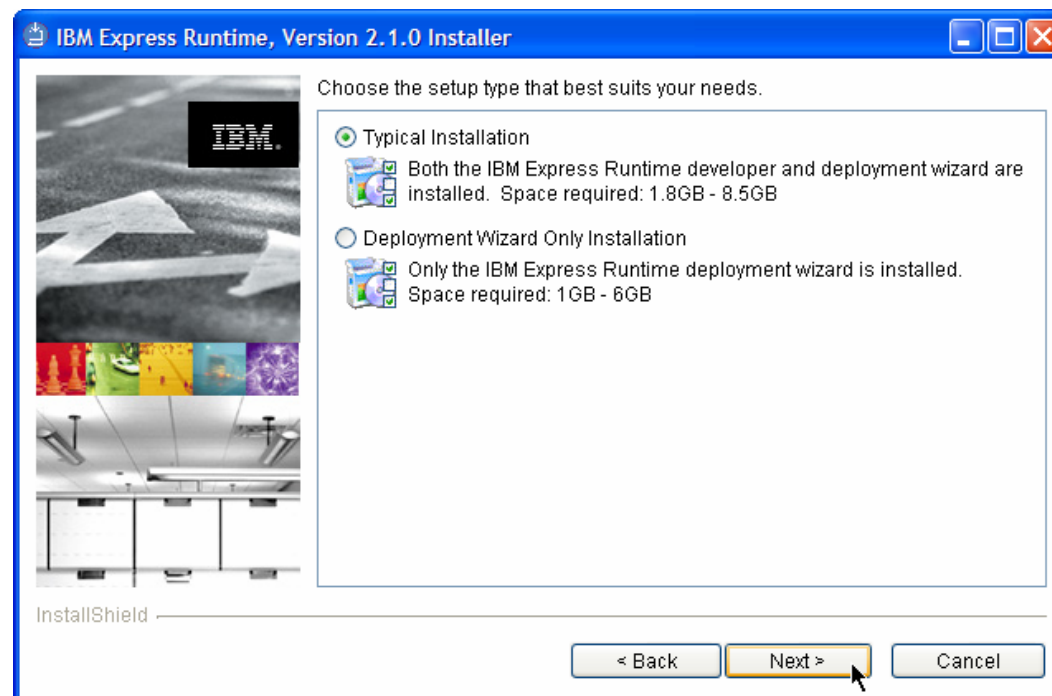
Destination directory

- You may select a **Destination Directory**, other than the default directory. Then click **Next** to continue.



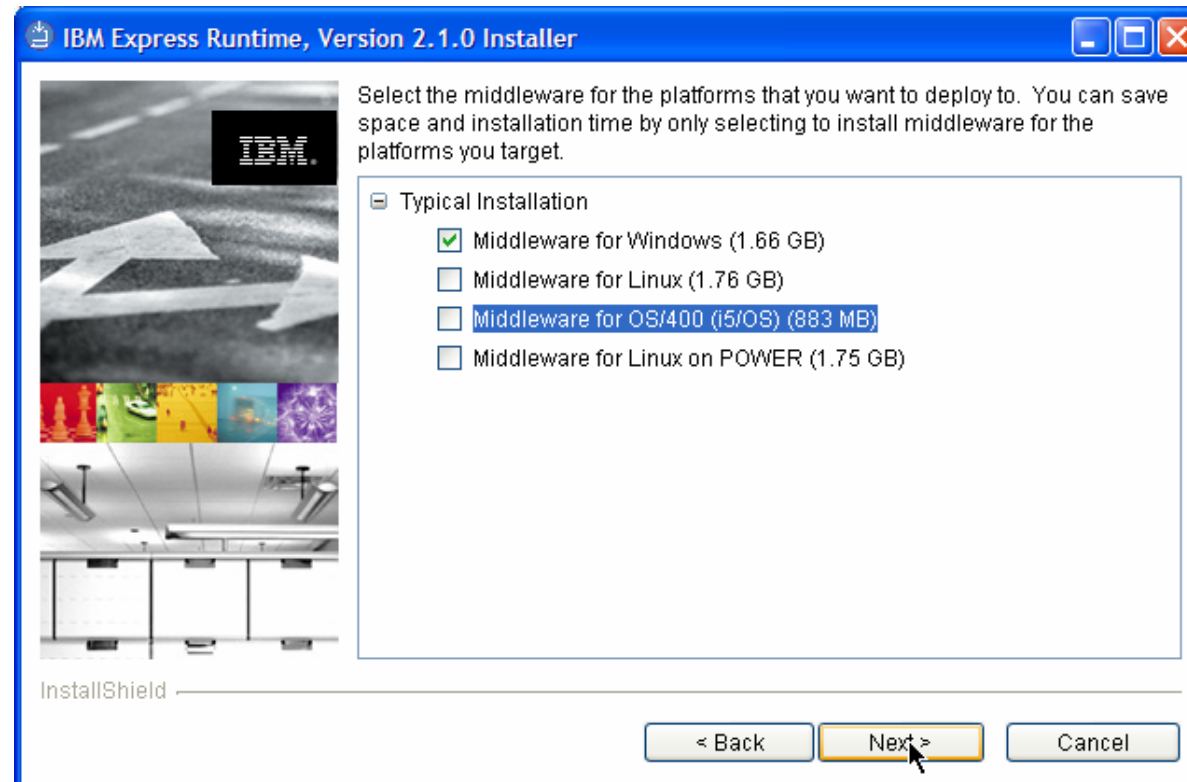
Installation options

- **Select the installation type and click [Next](#). In most cases, you select [Typical Installation](#).**



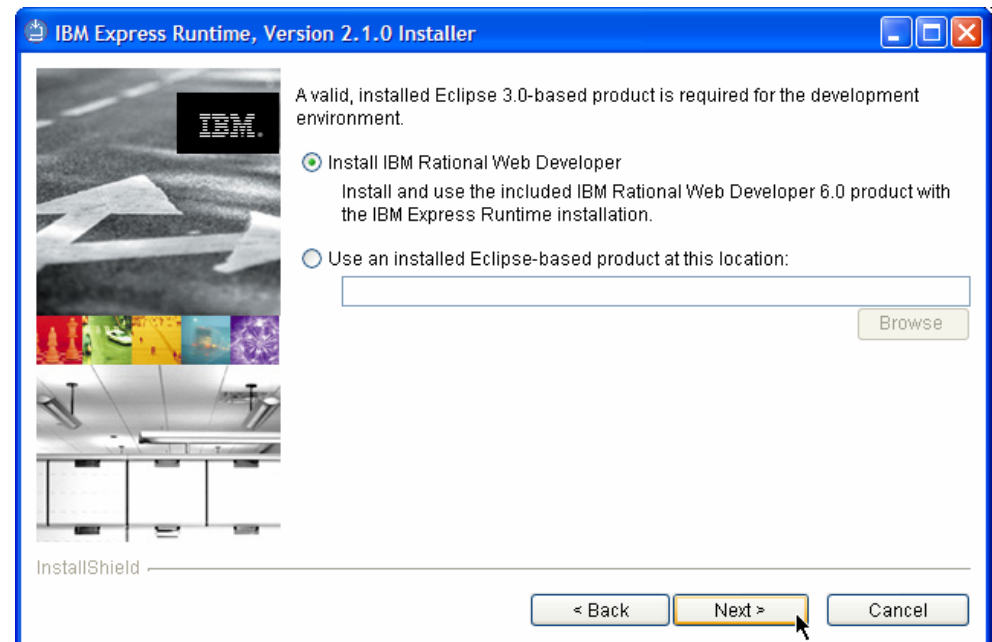
Typical installation: Selecting the middleware components

- **Select middleware for the platforms that you want to support with your solutions. Click **Next** to continue.**



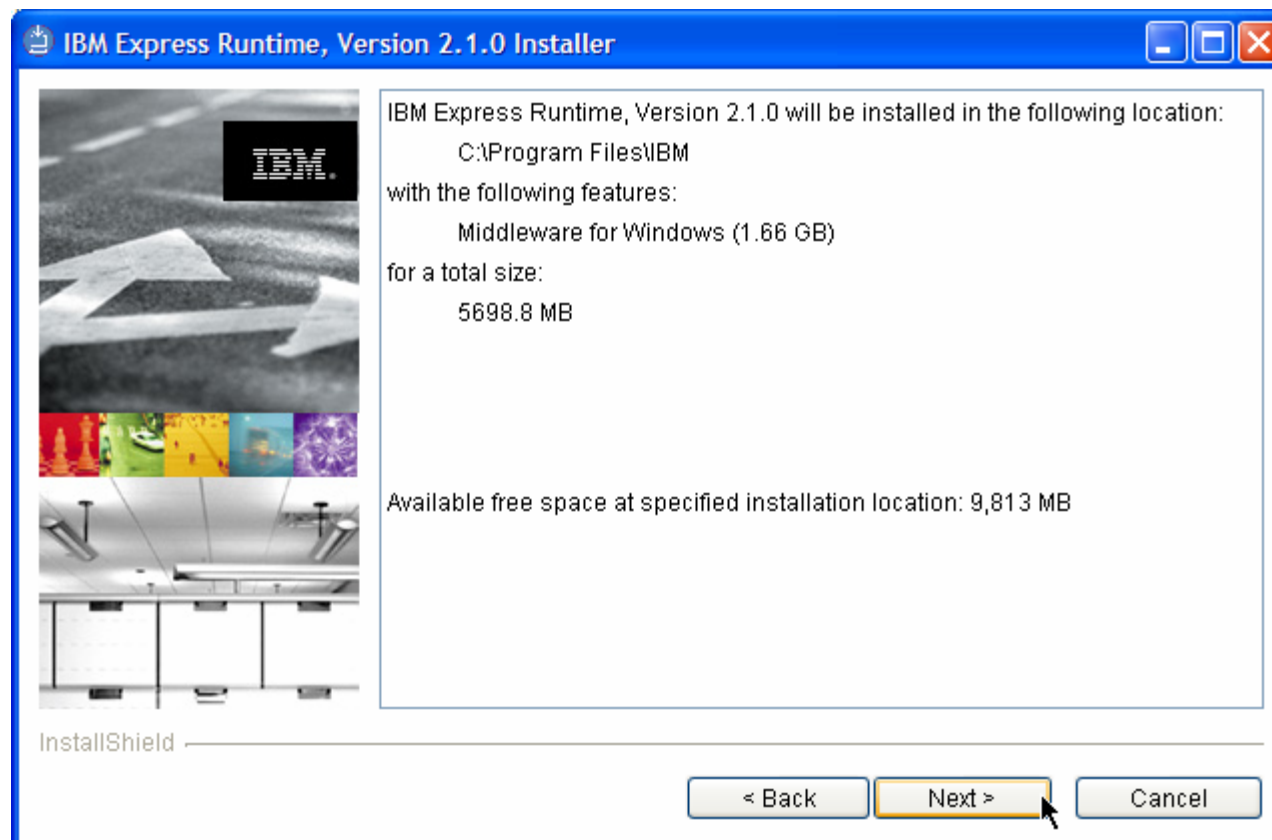
Installing the development environment

- If you plan to use IBM Rational Web Developer, accept default option and click **Next**.
- If you have another Eclipse-based product installed, select the second option and click **Next**.



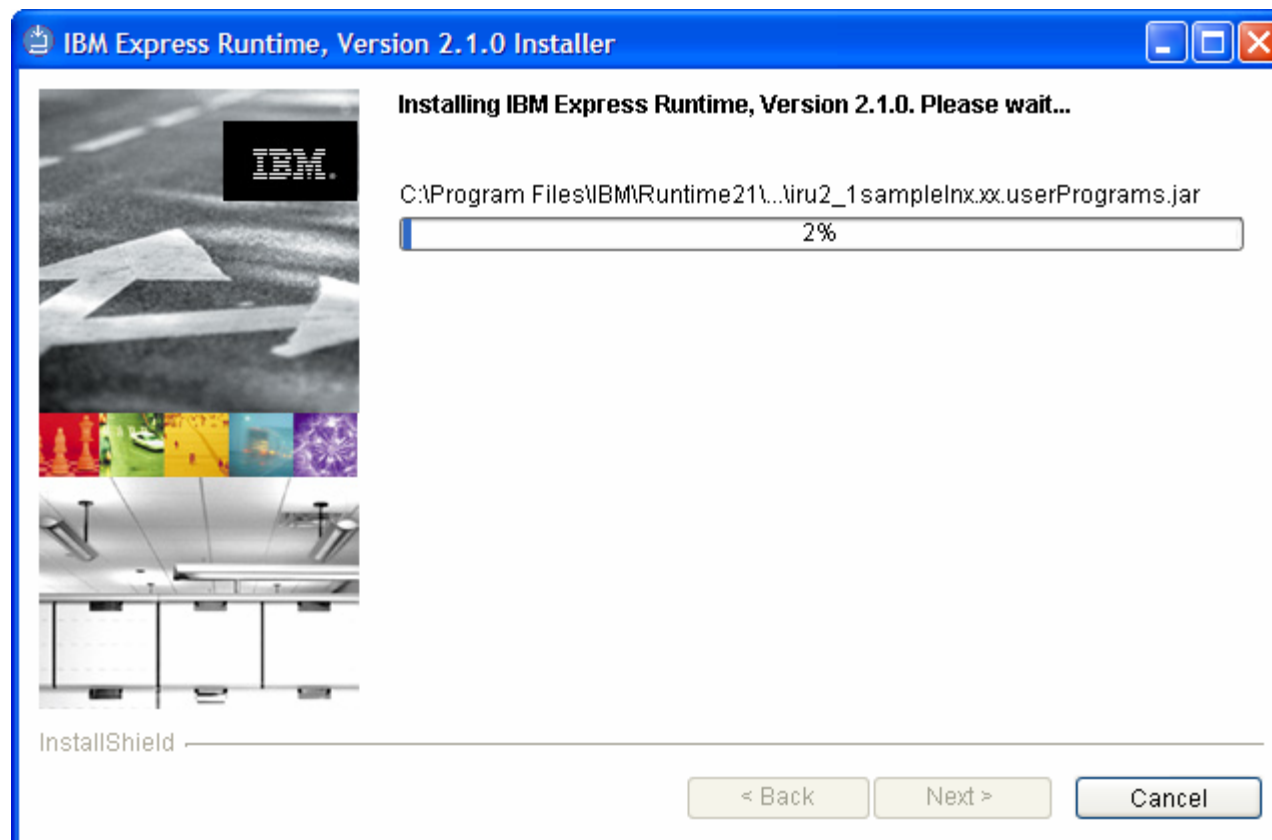
Installation summary

- Review the Installation Summary and click **Next**.



Installation progress

- You should see the installation progress bar.

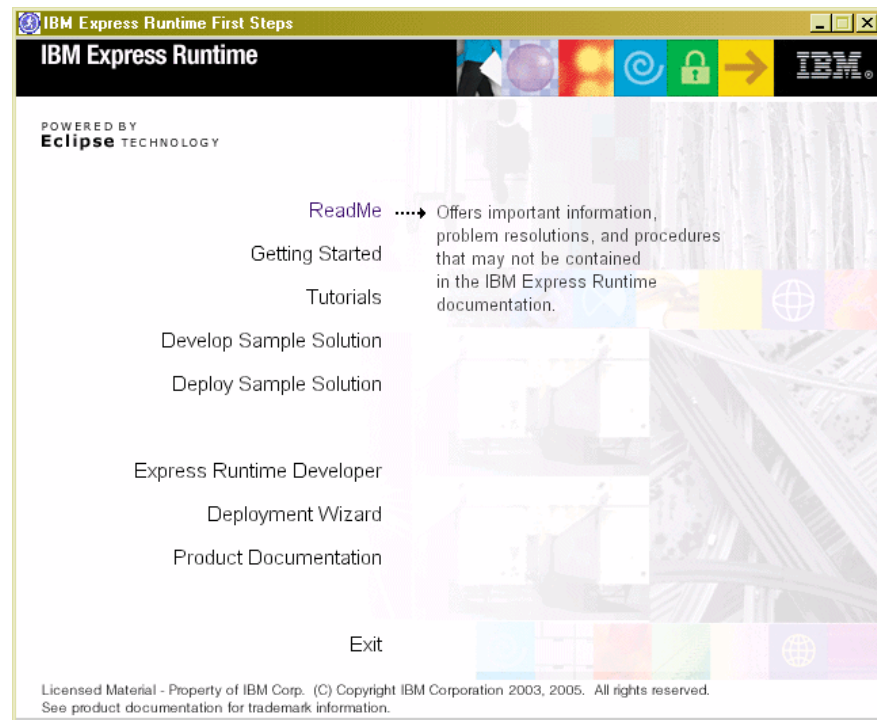


Successful installation

- **The installation process takes approximately one hour. You should see a message about the successful installation.**
- **Click [Finish](#) to complete installation.**

First Steps

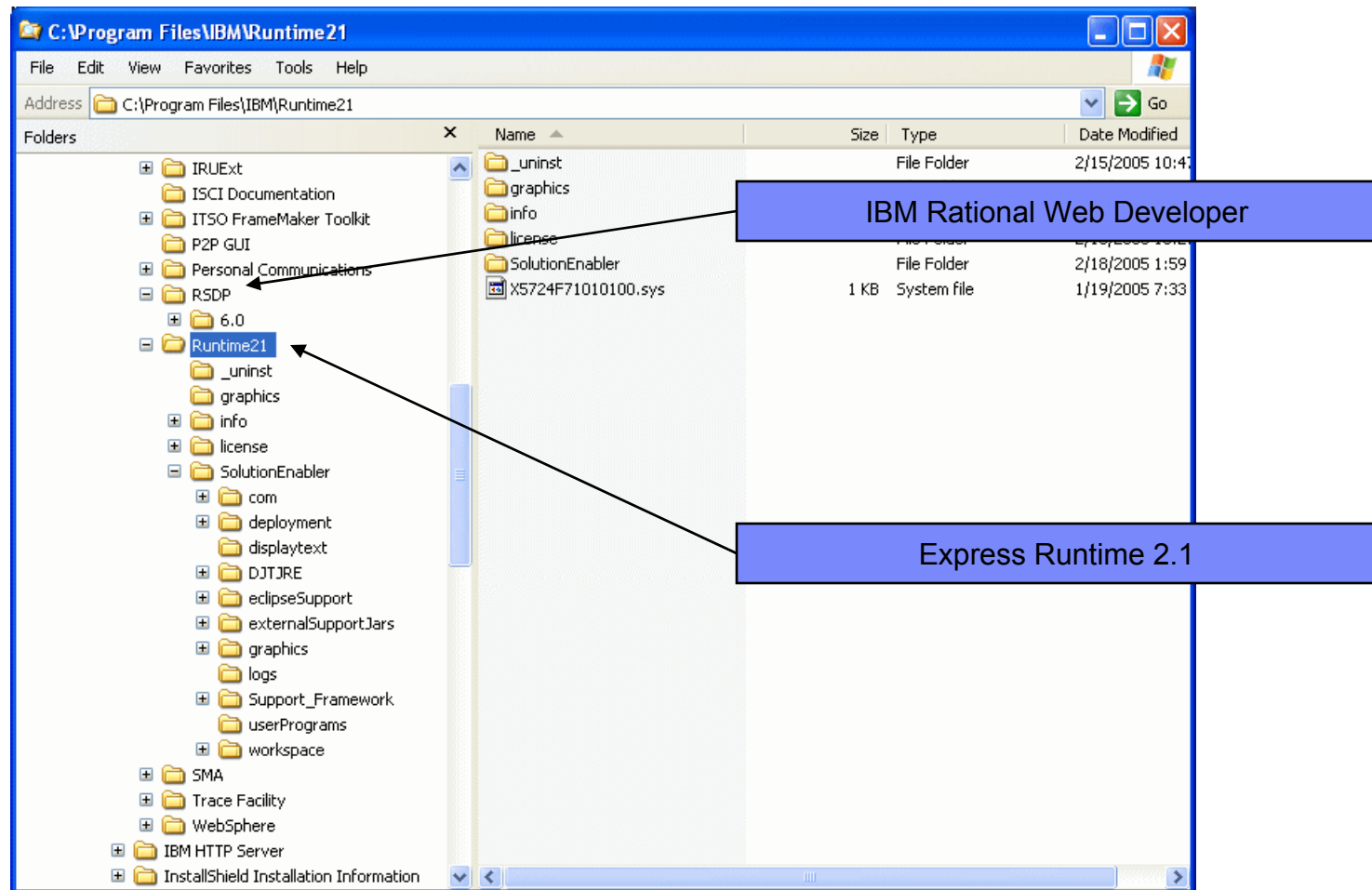
- **The First Steps menu starts automatically. Select a desired option. At this point, you can use Express Runtime.**
- **It's strongly recommended to review the ReadMe file for the latest updates for the product.**



Demo 1 – Installing Express Runtime

Installation results on the Windows File System

- Express Runtime v2.1 Directory Structure



Installation hints

- Before installation, verify that the hardware and software prerequisites are met.
- The installation log file provides useful information about the installation process.
- The Express Runtime installation log file [IRU_Install.log](#) is located in `<ER21_install_dir>/Runtime21/SolutionEnabler/logs`

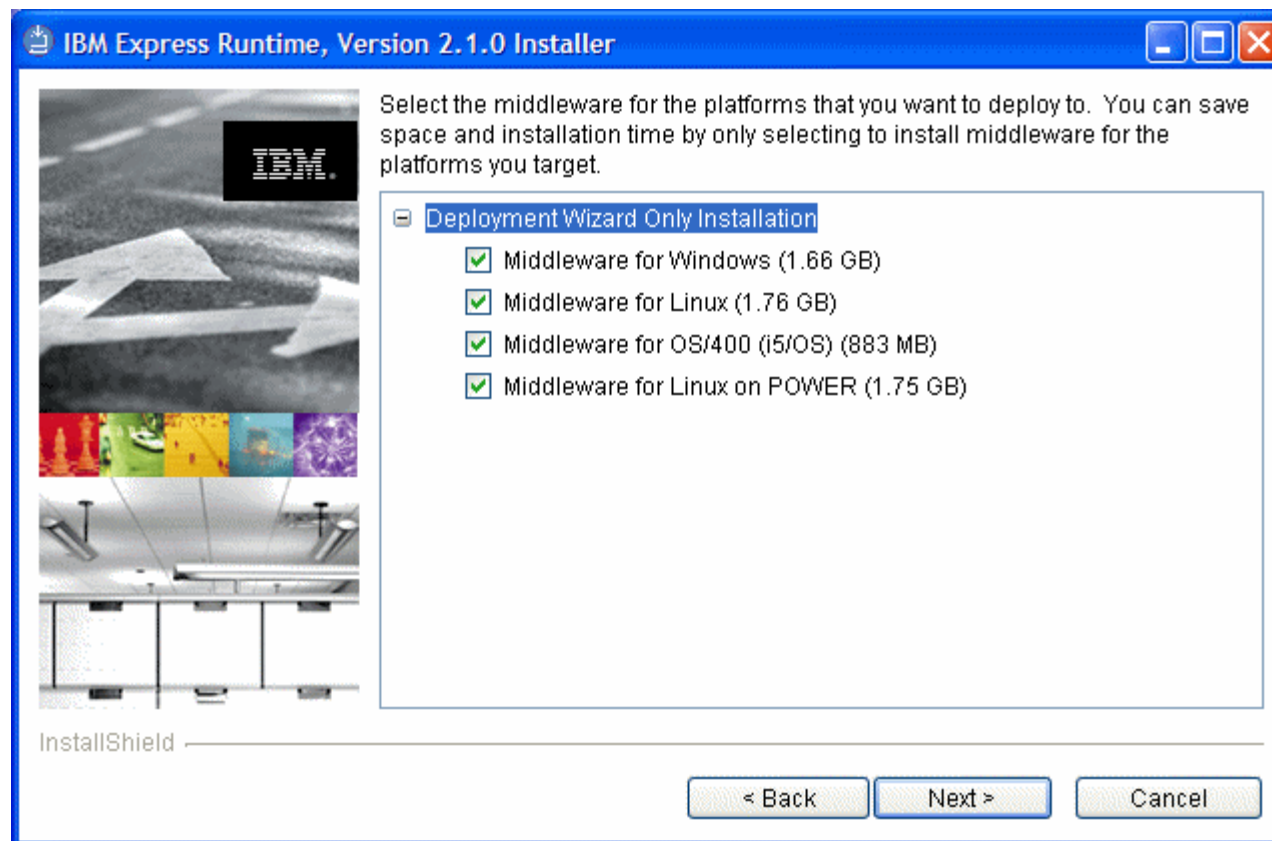
Other types of installation

Other types of installation

- If you select **Deployment Wizard only** installation, some of the GUI panels are different.

Deployment Wizard only

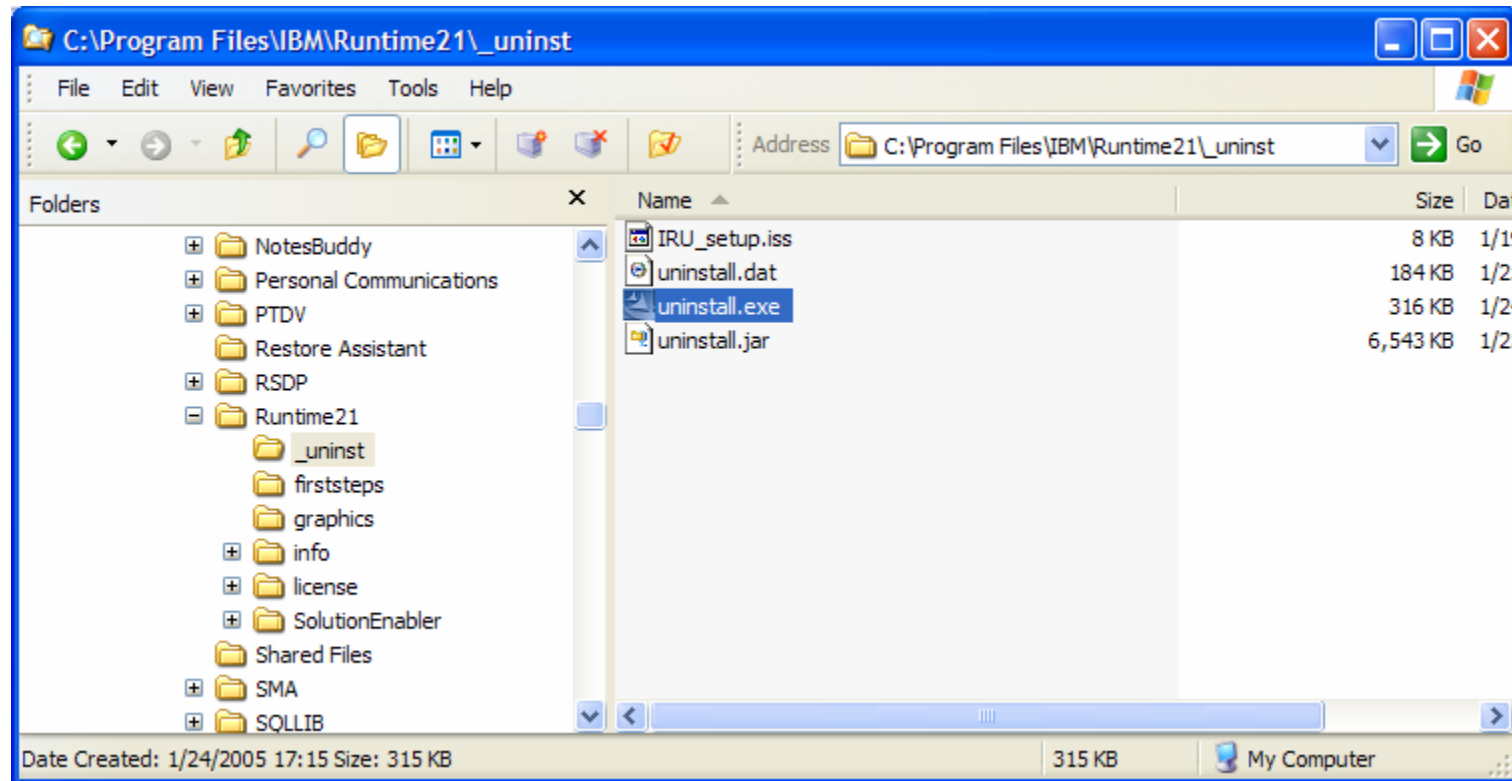
- With this installation, the middleware components selection panel is slightly different.



Uninstallation

Express Runtime: Uninstallation

- You can locate the `uninstall.exe` file in the Express Runtime directory tree under `_uninst`.



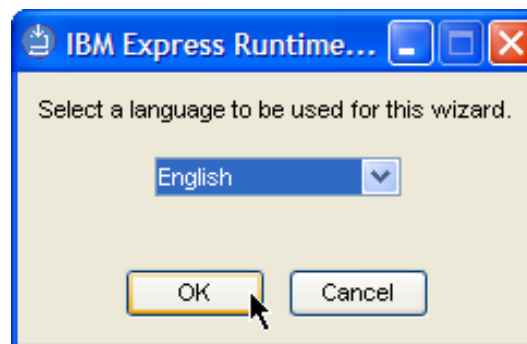
Express Runtime: Uninstallation (cont.)

- Always use the uninstaller to remove Express Runtime components.
- For files or folders not removed automatically, remove them manually.
- The Rational Web Developer or Eclipse tool is not removed.
- Deployed middleware components, which are not uninstalled by the uninstaller, should be removed individually. Remember that they can be deployed on another system.
- Silent uninstallation is supported, for example on Windows:

```
<ER_INSTALL_DIR>\_uninst\uninstall.exe" -options  
  <ER_INSTALL_DIR>\_uninst\IRU_setup.iss"
```

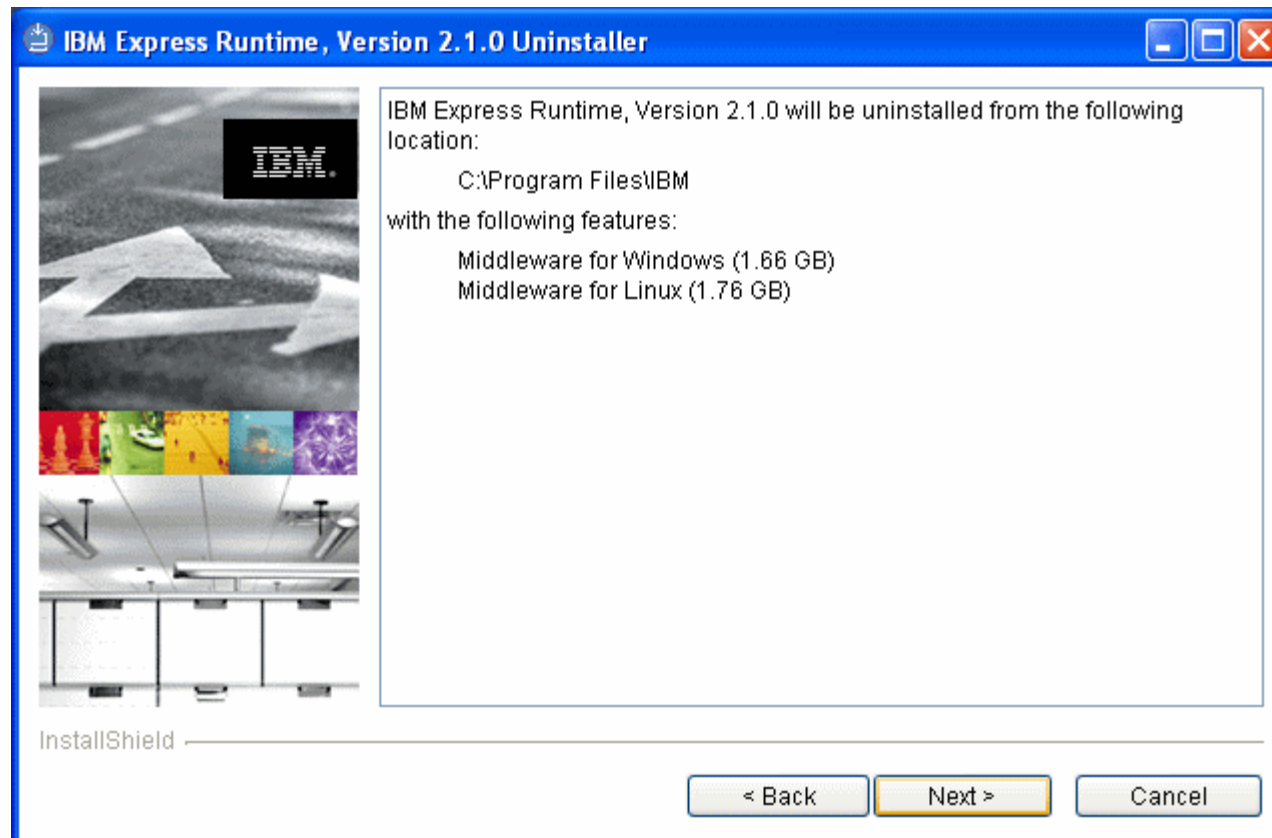
Express Runtime: Uninstallation process

- Start the uninstaller by using the following program
 - For Windows, use the **uninstall.exe** program
 - For Linux, use the **uninstall.sh** program
- Select a language for the uninstallation process



Uninstall summary panel

- Review the summary of the components to be uninstalled.



Verify the status

- **Verify that a successful uninstallation has occurred.**
- **Click [Finish](#) to complete the process.**

Remaining artifacts after the uninstallation completes

- **Artifacts remaining on Windows installations**
 - The <ER_INSTALL_DIR>\ directory still exists.
 - The <ER_INSTALL_DIR>\SolutionEnabler\logs\IRU_Install.log file contains uninstall results.

Deployed components: Uninstallation

- **Use the uninstallation process that is specific to each deployed component:**
 - Remove the deployed application.
 - Uninstall WebSphere Application - Express.
 - Uninstall DB2 UDB Express.
 - Uninstall IBM HTTP Server.
 - Uninstall WebSphere Express plug-in for IBM HTTP Server.

End of the module