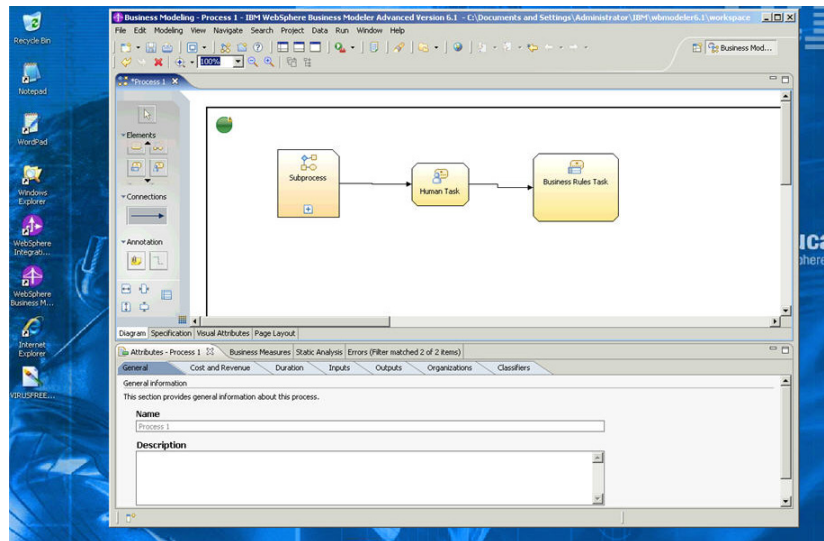


IBM WebSphere University Expert Arena

Experience WebSphere



- Access full function versions of WebSphere software
- Test code without worry in a virtual “sandbox” environment
- Extend hands-on lab sessions



Using Citrix you can interact remotely with full function versions of WebSphere software.

While most IBM® WebSphere® Education courses include hands-on labs during your class, there always seems to be a need for more time... more time to complete an exercise, tweak a setting or try out a code change. With the IBM WebSphere Education Expert Arena offering, you can experience WebSphere products and learn by doing—change product configurations, explore features or experiment with code.

In addition to being a great learning tool, an IBM WebSphere University Expert Arena can be used as a test environment to help you avoid costly issues as you deploy your project. A yearly survey conducted by the WebSphere Support organization has shown a lack of test environment was a leading cause of WebSphere support engagements over the past three years.

IBM WebSphere University Expert Arenas are not simulations or canned presentations. You log in to live versions of WebSphere or CICS® software and interact real-time.



In addition to a live experience, IBM WebSphere University Expert Arena offers:

- *Access to fully functional versions of WebSphere and CICS software, not functionally stripped or trial versions.*
- *Choice of operating environments, such as Linux®.*
- *Access to your Expert Arena 24 hours a day, seven days per week to support teams in different time zones or different geographies.*
- *The capability to be reimaged and recovered—experiment, make changes or test code without worry.*

Start Experiencing WebSphere

Getting an Expert Arena up and running is as simple as logging on. You will remotely access software on pre-configured IBM servers. There are no WebSphere components to install on your local machine, so you do not have to worry about system configurations or requirements. You can use a standard laptop or desktop system.

Purchasing IBM WebSphere University Expert Arena time is easy too. You can buy 100-hour increments of access time as needed. Visit ibm.com/software/websphere/education/arena/ to view a complete listing of available IBM WebSphere University Expert Arena configurations or contact your local IBM Representative.

Currently Available IBM WebSphere University Expert Arenas

- [WX050 WebSphere Process Server V 6.2](#)
- [WX111 WebSphere Process Server V 6.1](#)
- [WX141 WebSphere Business Services Fabric V 6.1](#)
- [WX054 WebSphere Business Monitor V 6.2](#)
- [WX052 WebSphere Enterprise Service Bus V 6.2](#)
- [WX131 WebSphere Enterprise Service Bus V 6.1](#)
- [WX110 WebSphere Transformation Extender V 8.1](#)

© Copyright IBM Corporation 2009

IBM Software Group
Route 100
Somers, NY 10589
U.S.A.

Produced in the United States of America
June 2009
All Rights Reserved

IBM, the IBM logo, ibm.com, WebSphere and CICS are trademarks or registered trademarks of International Business Machines Corporation in the United States, other countries, or both. These and other IBM trademarked terms are marked on their first occurrence in this information with the appropriate symbol (® or ™), indicating US registered or common law trademarks owned by IBM at the time this information was published. Such trademarks may also be registered or common law trademarks in other countries. A current list of IBM trademarks is available on the Web at ibm.com/legal/copytrade.shtml.

Linux is a registered trademark of Linus Torvalds in the United States, other countries, or both.

Other company, product or service names may be trademarks or service marks of others.

References in this publication to IBM products or services do not imply that IBM intends to make them available in all countries in which IBM operates.