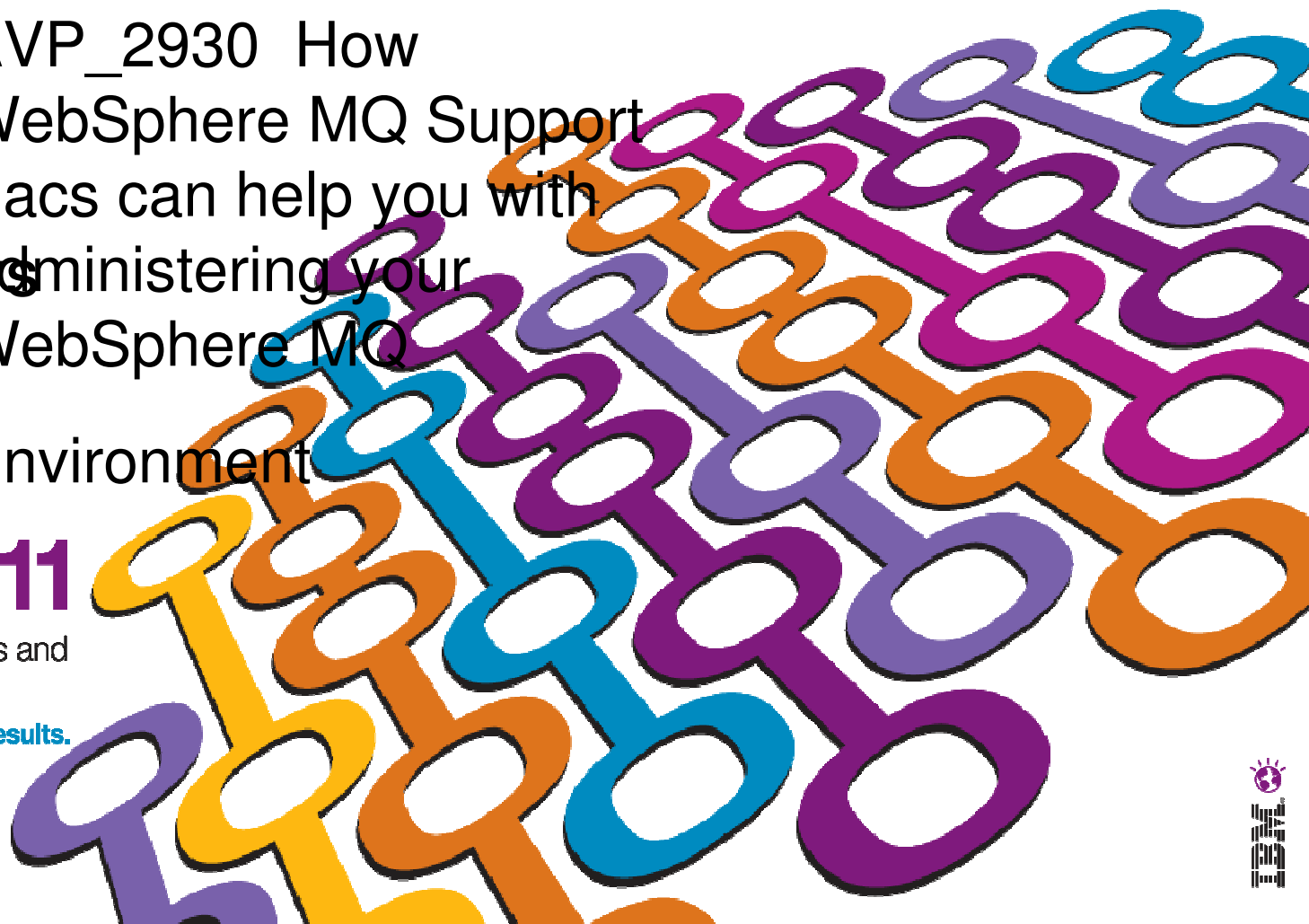


AVP_2930 How
WebSphere MQ Support
Pacs can help you with
Emma Bushby
administering your
WMQ & WMB ACS
WebSphere MQ
Environment

IBM Software
Impact2011
Changing the Way Business and
IT Leaders Work
Optimize for Growth. Deliver Results.





IBM's statements regarding its plans, directions, and intent are subject to change or withdrawal at IBM's sole discretion. Information regarding potential future products is intended to outline our general product direction and it should not be relied on in making a purchasing decision.

The information mentioned regarding potential future products is not a commitment, promise, or legal obligation to deliver any material, code or functionality. Information about potential future products may not be incorporated into any contract. The development, release, and timing of any future features or functionality described for our products remains at our sole discretion.





Agenda

- What are Websphere MQ SupportPacs?
- Categories of SupportPac
- Popular SupportPacs
- SupportPacs covered in the lab





What are Websphere MQ SupportPacs?

- Code and documentation downloadable from the IBM support website :

<http://www-01.ibm.com/support/docview.wss?rs=171&uid=swg27007205>

- Mixture of support and not-supported code.
- Majority of downloads are freely available.
- Includes:
 - Product Extensions
 - Performance Reports
 - Tools/code for use with Websphere MQ

Agenda



- What are Websphere MQ SupportPacs?
- Categories of SupportPac
- Popular SupportPacs
- SupportPacs covered in the lab





Categories of SupportPac

- Category 1 : Fee based services
- Category 2 : Unwarranted “as-is” material
- Category 3 : Product Extensions
- Category 4 : 3rd Party Contributions



Agenda



- What are Websphere MQ SupportPacs?
- Categories of SupportPac
- Popular SupportPacs
- SupportPacs covered in the lab





Popular SupportPacs

- MO72 : MQSC Client for Websphere MQ
- MO71 : Websphere MQ for Windows: GUI Administrator
- MS03 : Websphere MQ save Queue Manager Object definitions using PCFs
- IH03 : Websphere Message Broker message display, test and performance utilities
- Performance Reports
- Linear Log clean up scripts – MO73, MS0L, MS62



Agenda

- What are Websphere MQ SupportPacs?
- Categories of SupportPac
- Popular SupportPacs
- SupportPacs covered in the lab





SupportPacs Covered in this Lab.

- Monitoring:
 - MH04 Queue Statistics Tool
 - MP08 Performance Monitor for Websphere MQ
 - M001 Event Monitor for Websphere MQ
- Moving messages:
 - MO03 Webshere MQ Queue Load/Unload utility
 - IH03 Webphere Message Broker Message Display, Test and Performance Utilities.
- Troubleshooting:
 - MA0W Websphere MQ API Trace



Comparison of Monitoring SupportPacs

	MH04 (Queue Statistics)	MP08 (Performance Monitor)	MO01 (Events Monitor)
Type of Monitoring	Real-time queue monitoring	Accounting and Statistics	WMQ Events
GUI or Command Line	Command Line	GUI	Command Line
Purpose	Enables you to determine the current state of queues within a queue manager.	Enables you to record information about MQI operations performed by WMQ applications, or activities occurring in a WMQ system.	Enables you to detect occurrences of instrumentation events in a queue manager or channel instance.
Possible Uses	<p>Troubleshooting application issues.</p> <p>Determining the message throughput on a queue.</p> <p>Monitor and record the activity on a queue</p>	<p>Account for application resource use & record application activity.</p> <p>Capacity Planning</p> <p>Detect problems in your queue manager network.</p> <p>Improve the efficiency of your qmgr network.</p>	<p>Detect problems in your queue manager network</p> <p>Assist in determining the cause of problems in your queue manager network</p> <p>Generate an audit trail React to queue manager state changes</p>
Category	Category 2	Category 2	Category 4



Comparison of SupportPacs for Moving Messages



	MO03 (qload)	IH03 (rfhutil)
GUI or Command Line	Command Line	GUI
Usage	Day to day operations	Development and Testing
Advantages	<p>Easier readability in file format</p> <p>Easy to move message between queues such as in unloading/loading thousands of messages from a backout queue back to the input queue after an issue has been resolved OR get messages that could not be processed in a production environment to replay them into a test environment.</p>	<p>Quick and Easy way to see whats on the queue</p> <p>Data in the GUI has easy readability with different tabs for the various pieces of an MQ message.</p>
Uses	Archiving Messages from a queue to a file	Debugging
Manipulation of Data	Allows you to easily edit the data	Full control over headers but cannot modify data
Category	Category 2	Category 2





Completing the Labs

- Pick the SupportPacs you are interested in trying out
- All the labs are standalone
- The VMImage should be ready to use
- Any questions – just ask..





We value your feedback

- Please complete the survey for this session

AVP_2930 How WebSphere MQ Support Pacs can help you with administering your WebSphere MQ Environment

Thank you...

