

AVP-2778 WebSphere MQ and WebSphere Application Server Integration Lab

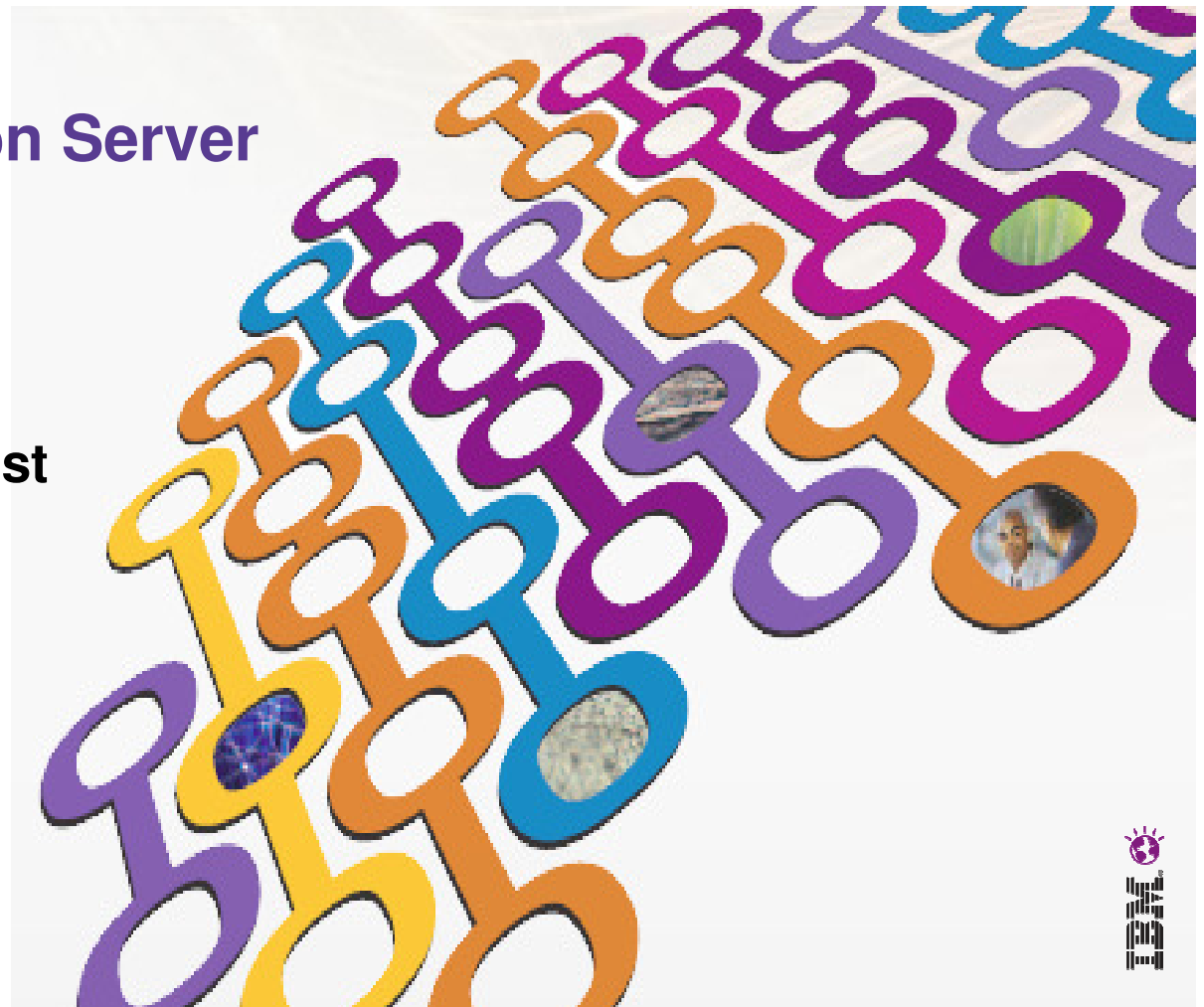
Tameka Woody,
Accelerated Value Specialist

IBM Software

Impact2012

The Premier Conference for Business and IT Leadership

Innovate. Transform. Grow.





Please Note

IBM's statements regarding its plans, directions, and intent are subject to change or withdrawal at IBM's sole discretion.

Information regarding potential future products is intended to outline our general product direction and it should not be relied on in making a purchasing decision.

The information mentioned regarding potential future products is not a commitment, promise, or legal obligation to deliver any material, code or functionality. Information about potential future products may not be incorporated into any contract. The development, release, and timing of any future features or functionality described for our products remains at our sole discretion.

Performance is based on measurements and projections using standard IBM benchmarks in a controlled environment. The actual throughput or performance that any user will experience will vary depending upon many factors, including considerations such as the amount of multiprogramming in the user's job stream, the I/O configuration, the storage configuration, and the workload processed. Therefore, no assurance can be given that an individual user will achieve results similar to those stated here.





Agenda

- Supported Versions of WebSphere Application Server
- Supported Versions of WebSphere MQ
- Versions of WebSphere MQ shipped with WebSphere Application Server
- Activation Specifications and Listener Ports
- WebSphere MQ Resource Adapter
- WebSphere MQ and WebSphere Application Server Lab

Supported Versions of WebSphere Application Server



- WebSphere Application Server V6.1
 - End of Service on September 30, 2012
- WebSphere Application Server V7.0.x
- WebSphere Application Server V8.0.x
- No longer supported
 - WebSphere Application Server V6.0
 - End of Service on September 30, 2010
 - WebSphere Application Server V5.1.x
 - End of Service on September 26, 2008





Agenda

- Supported Versions of WebSphere Application Server (WebSphere Application Server)
- Supported Versions of WebSphere MQ (WebSphere MQ)
- Versions of WebSphere MQ shipped with WebSphere Application Server
- Activation Specifications and Listener Ports
- WebSphere MQ Resource Adapter
- WebSphere MQ and WebSphere Application Server Lab



Supported Versions of WebSphere MQ

- WebSphere MQ V6.0 (All Platforms)
 - End of Service on September 30, 2012
- WebSphere MQ V7.0.0, V7.0.1, V7.1.0 (Distributed Platforms)
- WebSphere MQ V7.0.1 (z/OS only)
- No longer supported
 - WebSphere MQ V5.3
 - End of Service on September 28, 2007
 - WebSphere MQ V7.0.0 (z/OS only)
 - End of Service on September 30, 2011



Agenda

- Supported Versions of WebSphere Application Server (WebSphere Application Server)
- Supported Versions of WebSphere MQ (WebSphere MQ)
- Versions of WebSphere MQ shipped with WebSphere Application Server
- Activation Specifications and Listener Ports
- WebSphere MQ Resource Adapter
- WebSphere MQ and WebSphere Application Server Lab



WebSphere Application Server V8.0



WebSphere Application Server Version	WebSphere MQ JCA resource adapter Version	Implementation Version, shown in WMSG1703I log entry during server startup
8.0.0.0	7.0.1.4	7.0.1.4-k701-104-110104
8.0.0.1	7.0.1.5	7.0.1.5-k701-105-110419
8.0.0.2	7.0.1.6	7.0.1.6-k701-106-110721

WebSphere Application Server V7.0



WebSphere Application Server Version	WebSphere MQ JCA resource adapter Version	Implementation Version, shown in WMSG1703I log entry during server startup
7.0.0.0	7.0.0.0	7.0.0.0-k700-L080820
7.0.0.1	7.0.0.1	7.0.0.0-k700-L081015.2
7.0.0.3	7.0.0.2	7.0.0.2-k700-002-090216
7.0.0.5	7.0.1.0	7.0.1.0-k000-L090615.1
7.0.0.6	7.0.1.0	7.0.1.0-k000-L090706
7.0.0.7	7.0.1.1	7.0.1.1-k701-101-091001
7.0.0.9	7.0.1.1	7.0.1.1-k701-101-091116
7.0.0.11	7.0.1.2	7.0.1.2-k701-102-100504
7.0.0.13	7.0.1.3	7.0.1.3-k701-103-100812
7.0.0.15	7.0.1.3	7.0.1.3-k701-103-100812
7.0.0.17	7.0.1.4	7.0.1.4-k701-104-110104
7.0.0.19	7.0.1.5	7.0.1.5-k701-105-110419
7.0.0.21	7.0.1.6	7.0.1.6-k701-106-110721





WebSphere Application Server V6.1

Specific Version of WebSphere Application Server V6.1	Version of WebSphere MQ client jar files
6.1.0.0 - 6.1.0.8	6.0.1.1
6.1.0.9 - 6.1.0.14	6.0.2.1
6.1.0.15 - 6.1.0.18	6.0.2.2
6.1.0.19 - 6.1.0.28	6.0.2.4
6.1.0.29	6.0.2.8 + IC63701
6.1.0.31 - 6.1.0.36	6.0.2.8 + IC63701 + IZ72486
6.1.0.37 and later	6.0.2.10





Agenda

- Supported Versions of WebSphere Application Server (WebSphere Application Server)
- Supported Versions of WebSphere MQ (WebSphere MQ)
- Versions of WebSphere MQ shipped with WebSphere Application Server
- **Activation Specifications and Listener Ports**
- WebSphere MQ Resource Adapter
- WebSphere MQ and WebSphere Application Server Lab

Activation Specifications and Listener Ports



- Activation Spec
 - Introduced in WebSphere Application Server V7
 - Easier to administer
 - Recommended use in WebSphere Application Server V7 or later
- Listener Ports
 - Available for use in WebSphere Application Server V6 and earlier
 - Deprecated in WebSphere Application Server V7, but still available
 - Configured for each server within a node



Agenda

- Supported Versions of WebSphere Application Server (WebSphere Application Server)
- Supported Versions of WebSphere MQ (WebSphere MQ)
- Versions of WebSphere MQ shipped with WebSphere Application Server
- Activation Specifications and Listener Ports
- **WebSphere MQ Resource Adapter**
- WebSphere MQ and WebSphere Application Server Lab





WebSphere MQ Resource Adapter

- Inbound and Outbound Communications
- Connects in client or bindings mode
- Do NOT use the WebSphere MQ RA in WebSphere Application Server V6
- Maintenance is applied using WebSphere Application Server service packs
- Supports point-to-point and publish/subscribe





Agenda

- Supported Versions of WebSphere Application Server (WebSphere Application Server)
- Supported Versions of WebSphere MQ (WebSphere MQ)
- Versions of WebSphere MQ shipped with WebSphere Application Server
- Activation Specifications and Listener Ports
- WebSphere MQ Resource Adapter
- **WebSphere MQ and WebSphere Application Server Lab**





- Basic WebSphere MQ and WebSphere Application Server Configuration
- Optional Labs
 - Publish/Subscribe
 - Listener Ports
 - SSL



We love your Feedback!

- Don't forget to submit your Impact session and speaker feedback! Your feedback is very important to us, we use it to improve our conference for you next year.
- Go to impactsmartsite.com from your mobile device
- From the Impact 2012 Online Conference Guide:
 - Select Agenda
 - Navigate to the session you want to give feedback on
 - AVP-2778 WebSphere MQ V7 and WebSphere Application Server V7 Integration
 - Select the session or speaker feedback links
 - Submit your feedback

Thank You...



Copyright and Trademarks



© IBM Corporation 2012. All Rights Reserved.

IBM, the IBM logo, ibm.com are trademarks or registered trademarks of International Business Machines Corp., registered in many jurisdictions worldwide. Other product and service names might be trademarks of IBM or other companies.

A current list of IBM trademarks is available on the Web at
“Copyright and trademark information” at
www.ibm.com/legal/copytrade.shtml.





Tips for completing AVP-2778 Lab

- Any user id can be used to log into WAS Admin Console
- Node=impact2012Node1, Server=server1

- Reference Link:

<http://publib.boulder.ibm.com/infocenter/prodconn/v1r0m0/index.jsp>

