



IBM Software Group

Portlet Development Deep Dive for RAD and Portlet Factory

Portlet Development and Portal Design

using J2EE, Web Services, Data Access, JSF and more...

Go to <http://JavaSOA.com> for presentations, demos, tutorials and other resources



Name

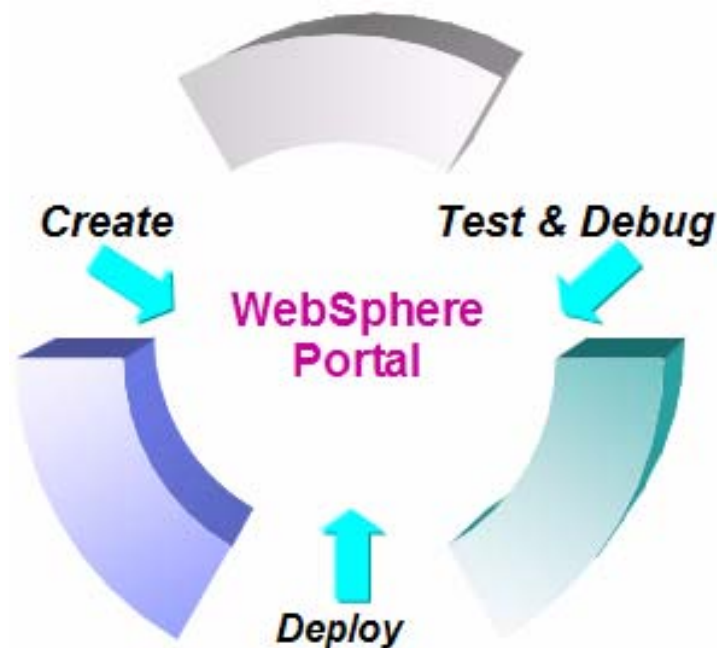
Title

Company

First ½ of 2-part presentation

This is the first 15 minutes of a 1:15 session

- These charts simply overview some of the RAD built-in portal/portlet tools
- Next presentation, not included here, showcases WebSphere Portlet Factory (formerly Bowstreet Portlet Factory)

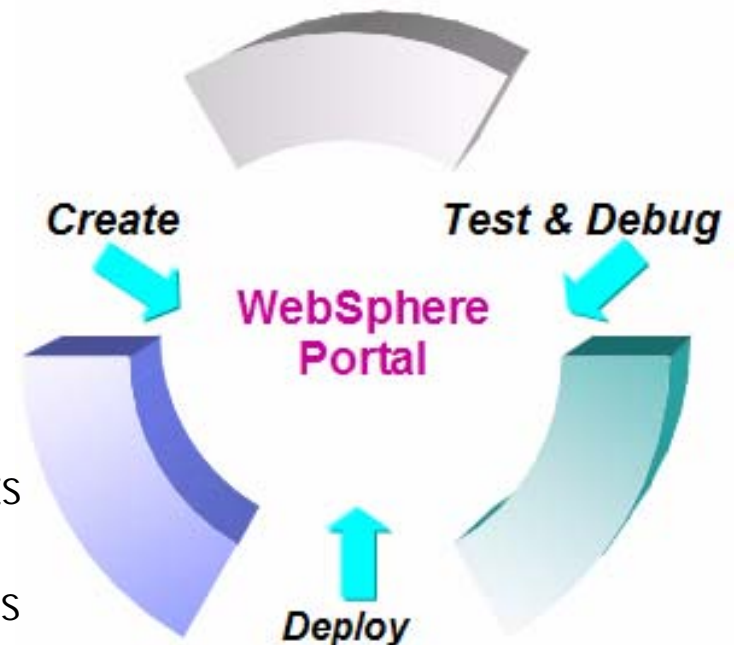


RAD Built-in Portal/Portlet Development

RAD V6 = Design → Build ↔ Test → Deploy

Simplify and Accelerate Development

- Portlet build, test, debug and deploy tasks are highly automated
- Portal Server environment is seamlessly integrated for automated testing & deployment
- Portal Page/Site design look-n-feel is automated through drag-n-drop
- Developer ease-of-use includes:
 - JSF (JavaServer Faces) tool integration for creating rich thin client Portlet UIs
 - Web Services tool integration for creating and consuming web services in Portlets
 - J2EE tool integration for easily calling JavaBeans and EJBs from Portlets
 - Cooperative click-2-action tool integration for portlet-to-portlet communications
 - People awareness tool integration for collaborative portlets
 - Service Data Objects (SDO) tool integration for
 - Relational databases
 - Non-relational backend data and EIS app integration (Siebel, SAP, PeopleSoft, Legacy, XML, etc.)



Simplifying J2EE, Web and Portal/Portlet Development

- Data (relational and non) drag-n-drop ease-of-use ^{1 2}

- Web Services development drag-n-drop ease-of-use ^{1 2}

- Portals drag-n-drop ease-of-use ^{1 2}

Cust_id	Firstnm	Midinit	Lastnm	State	Zip
1	Arthur	A	Platinum	IL	60606
2	Betsy	B	Golden	IL	60606
3	Charlie	C	Silver	IL	60606
4	Denise	D	Copper	IL	60606



Richer Thin Clients (Portal, Portlets and Web Apps)

Database Query

Web Service

Tabbed Panels

Graphing Controls

Spreadsheet Control

Banking Accounts

Account #	Account Type	Balance
96,666	Credit	2,000.00
74,444	Checking	1,432.44
85,555	Saving	2,567.56

Account Details

Account Number: 96666

Trans #	Amount	Date	Type	Expense Purpose
355	72.62	2000-11-06	Visa	Taxes
356	31.78	2001-06-16	Visa	Entertainment/Travel
357	61.02	2000-08-25	Visa	Clothing
358	21.75	2000-01-25	Visa	Transportation
359	13.01	2001-03-24	Visa	Telephone
360	24.51	2002-01-20	Visa	Transportation
361	15.87	2001-02-11	Visa	Food
362	13.81	2001-05-23	Visa	Telephone

Make Transfer

From:

To:

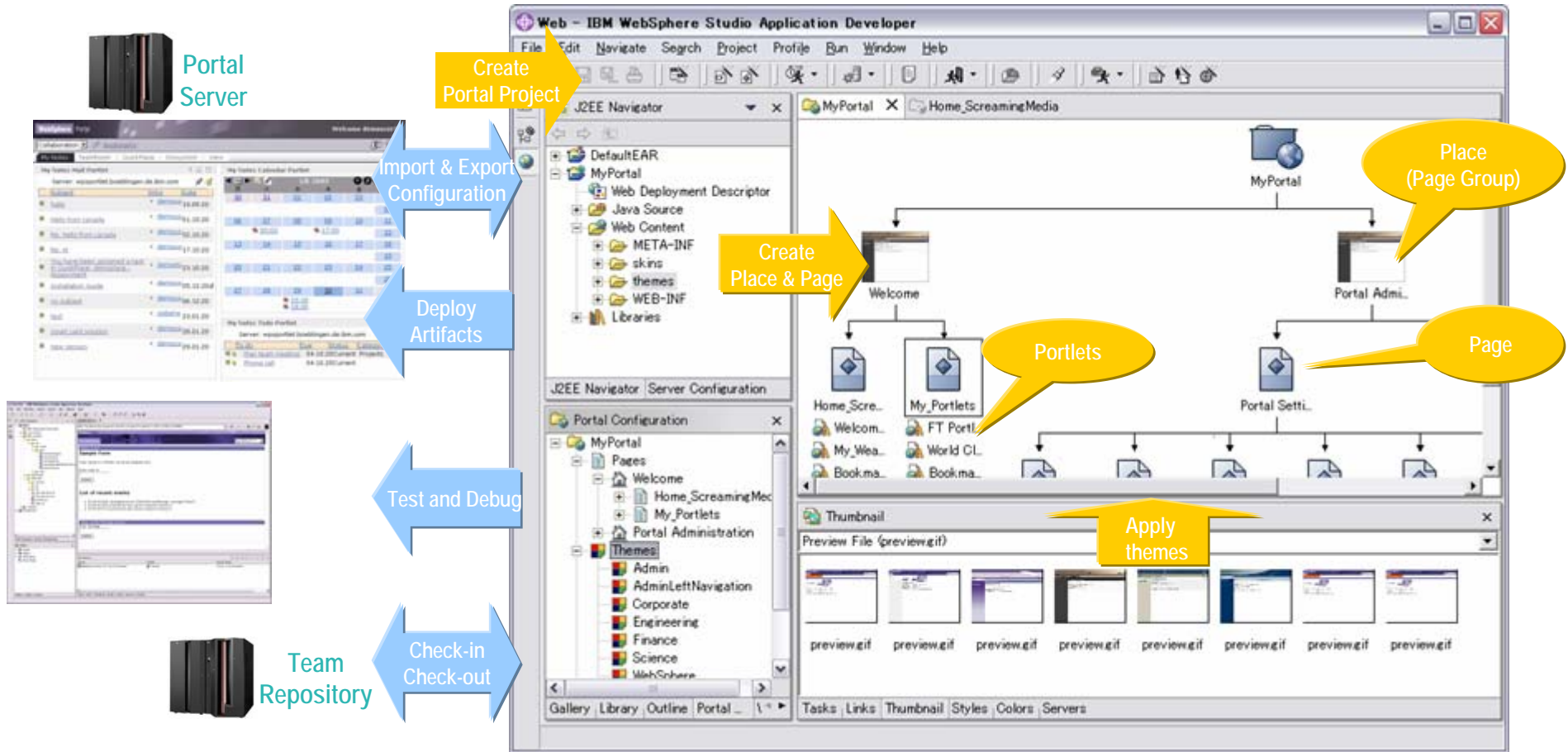
Amount: \$

Expense Allocation

- Mendical/Dental
- Mortgage/Rent
- Food
- Gas/Electric
- Cloth
- Insurance
- Dependent Care
- Taxes
- Entertainment/Travel
- Transportation
- Telephone



Portal Designer: Site, Page, Themes, Skins



Portal Site Designer

Resources

- <http://ibm.com/developer>

 (IBM developerWorks for technologies and/or products)
 - Java, J2EE, Web Services and other technology zones are on the left hand side
 - WebSphere Zone: <http://ibm.com/developer/websphere>
 - Rational Zone: <http://ibm.com/developer/rational>
 - Free Education Portal: <http://ibm.com/developer/training>

- <http://www.redbooks.ibm.com>

 (How-To Step-by-step Practical Implementation Books)

- Sun Java/J2SE/J2EE Tutorials: [Java Tutorial Online](#) , [J2EE Tutorial Online](#) , [J2EE Tutorial BOOK](#)

- <http://JavaSOA.com> (a.k.a. JavaDevTools.com, RationalCentral.com, WebSphereCentral.com)

 (Tutorials, Links, Presentations, White Papers, Articles, etc.)

developerWorks
DB2 ▶
eServer ▶
Lotus ▶
Rational ▶
Tivoli ▶
WebSphere ▶
Autonomic computing ▶
Grid computing ▶
Java™ technology ▶
Linux ▶
Open source ▶
Power Architecture™ ▶
SOA and Web services ▶
Web architecture ▶
Wireless technology ▶
XML ▶
Feedback
Related links
• ISV resources
• alphaWorks (emerging technologies)
• Academic program
• IBM Redbooks
• IBM Press books

