



# **Publishing the WCMSample project using the Web Content Publisher Personalization Publish Server**

By Timothy Orlowski (orlo@us.ibm.com)  
Software Engineer, IBM Corp.  
July 2002

## **Abstract**

This document describes the necessary steps for publishing the WCMSample project using the Web Content Publisher (WCP) Personalization Publish Servlet. Before publishing the WCMSample project, you must install the WCP samples and complete the tutorial.

### **Step 1. Create the WCMDEMO database on the target system**

If the target machine already has the WCMDEMO database, go to Step 2. Create the Datasource for the WCMDEMO database

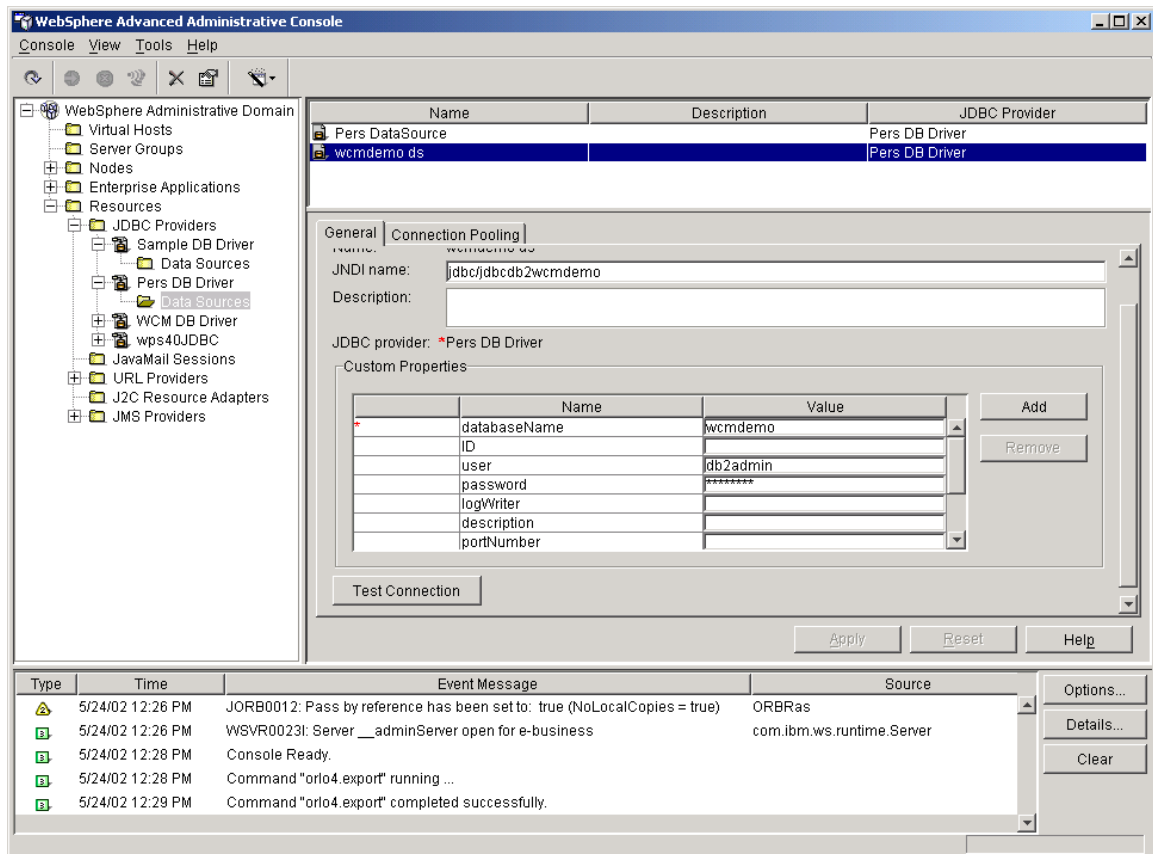
If the target machine does **NOT** have the WCMDEMO database, you will need to create the database.

- a. Copy createsample.bat and sample.ddl from the WAS\_HOME\wcm\db2\samples directory of the WCP server machine to the target machine.
- b. Edit the sample.ddl file to update the DB2 userid and password on the CONNECT statement (CONNECT TO WCMDEMO USER db2admin USING db2admin) to make it your DB2 userid and password.
- c. Remove all lines between CONNECT TO WCM USER db2admin USING db2admin and DISCONNECT WCM in sample.ddl. This removes the section for the WCM database.
- d. Run createsample.bat on the target system to create the WCMDEMO database and the Product and News tables.

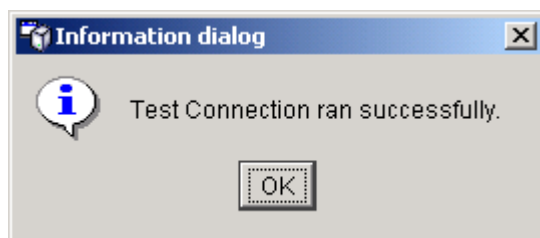
### **Step 2. Create the Datasource for the WCMDEMO database**

To create the Datasource for the WCMSample Database you need run a bat file.

- a. Copy wcmSampleds.xml and importWCMSampleDS.bat to the WAS\_HOME\bin directory.
- b. Edit wcmSampleds.xml and update user and password values to match the DB2 userid and password that was used to create the Datasource.
- c. Run importWCMSampleDS.bat.
- d. Open the WebSphere Advanced Administrative Console and test the connection of the Datasource.



Click **Test Connection** to make sure the Datasource can connect to the database.



**Step 3. Update the sample class files to use the right DB2 userid and password**

The ProductManager.java and CompanyNewsManager.java source code in WAS\_HOME\lib\ext\WCMSample directory on the WCP Server machine also have a DB2 userid and password. These values must match the DB2 userid and password of the WCMDEMO Datasource on the target system.

If the values match the DB2 userid and password you used when creating the WCMDEMO database, the files will work properly and do not need to be rebuilt.

If the values do not match, it is necessary to update the code. To do this, edit the source and update the userid and password values in the ProductManager.java and CompanyNewsManager.java to match the values used in the WCMDEMO Datasource. Rebuild using WSAD.

Alternatively, you can regenerate the sample class files using the WSAD Personalization Content wizard.

Copy all the class files to the WAS\_HOME\lib\ext\WCMSample directory on the target system. Create the WCMSample subdirectory as necessary.

Restart the application server on the target system.

**Step 4. Test connectivity to the publish servlet**

In a browser session on the WCP machine, specify the URL that corresponds to the publish servlet. If the connection is successful, the following message is displayed: Get request not allowed for this servlet.

### Step 5. Define the Publish Server

In the WCP Admin UI, define a publish server using the URL you just tested.

**Add Publish Server**

**Server Name:**  
GregsServer \*

**Servlet URL:**  
http://gtm1.raleigh.ibm.com/WCMPznPublish/publishtarget \*

**Proxy Settings**

**Type:** None **Host:** **Port:**

☐ **Realm**

**User ID:** **Password:**

**Add** **Cancel**

### Step 6. Publish the Content

From the Content view in WCP, click the **Publish** icon. Select the server and click **Publish**.

**Publish Content - Microsoft Internet Explorer**

**Publish Content**

**Select publish server**

Empty list box | GregsServer | Add to server list

**Type of publish**

☒ Publish only the items that have changed since the last publish  
☐ Publish all items

**When to publish**

☒ Publish content now  
☐ Publish content in a background process

**Start date:** May 24 2002  
**Start time:** 10 00 AM

**Publish** **Cancel**

You will see messages that tell you what is being published.

You can verify the publish by examining the content of the News and Product tables in the WCMDEMO database.

## **Trademarks**

Java and all Java-based trademarks and logos are trademarks or registered trademarks of Sun Microsystems, Inc. in the United States and other countries.

ActiveX, Microsoft, Windows, Windows NT<sup>®</sup>, and the Windows logo are trademarks or registered trademarks of Microsoft Corporation in the United States, or other countries, or both.

UNIX is a registered trademark of The Open Group.

Linux is a registered trademark of Linus Torvalds.

Other company, product, and service names, which may be denoted by a double asterisk(\*\*), may be trademarks or service marks of others.

## **Notices**

The following paragraph does not apply to the United Kingdom or any other country where such provisions are inconsistent with local law:

INTERNATIONAL BUSINESS MACHINES CORPORATION PROVIDES THIS PUBLICATION AND ANY ASSOCIATED CODE "AS IS" WITHOUT WARRANTY OF ANY KIND, EITHER EXPRESS OR IMPLIED, INCLUDING, BUT NOT LIMITED TO, THE IMPLIED WARRANTIES OR CONDITIONS OF NON-INFRINGEMENT, MERCHANTABILITY OR FITNESS FOR A PARTICULAR PURPOSE. Some states do not allow disclaimer of express or implied warranties in certain transactions, therefore, this statement may not apply to you.

This information could include technical inaccuracies or typographical errors. Changes are periodically made to the information herein; these changes will be incorporated in new editions of the publication. IBM may make improvements and/or changes in the product(s) and/or the program(s) described in this publication at any time without notice.

© Copyright International Business Machines Corporation 2002. All rights reserved. US Government Users Restricted Rights - Use, duplication or disclosure restricted by GSA ADP Schedule Contract with IBM Corp.