

# WebSphere® Extended Deployment Data Grid



Version 6.1

## Quick Start Guide

*This document describes a typical installation of WebSphere Extended Deployment Data Grid Version 6.1.*



**National Language Version:** To obtain the Quick Start Guide in other languages, print the Portable Document Format (PDF) from the CD.

### Product Overview

WebSphere Extended Deployment Data Grid Version 6.1 represents on demand capabilities in an extended environment. Use this product to enhance operational efficiency by deploying dynamic operations, service high-volume transactional workloads with linear scalability and near 100% availability, or manage large scale, continuously available WebSphere Application Server environments.

Additionally, WebSphere Extended Deployment Data Grid provides high-end caching and transaction partitioning capabilities, known better as ObjectGrid and the partitioning facility (WPF), respectively. ObjectGrid is enhanced to provide performance improvements across a wide range of application scenarios. The number of Java Virtual Machines (JVM) and size of data sets supported is significantly increased, query capabilities have been added to allow for parallel operations across the ObjectGrid configurations, and applications using different schemas for the underlying ObjectGrid information can execute concurrently improving application availability.

### 1 Step 1: Access your software and documentation



If you download your product from Passport Advantage, follow the instructions in the download document:

<http://www.ibm.com/support/docview.wss?rs=3023&uid=swg27009212>

For complete documentation, including installation instructions, see the WebSphere Extended Deployment Data Grid Information Center at <http://publib.boulder.ibm.com/infocenter/wxdinfo/v6r1/index.jsp>.

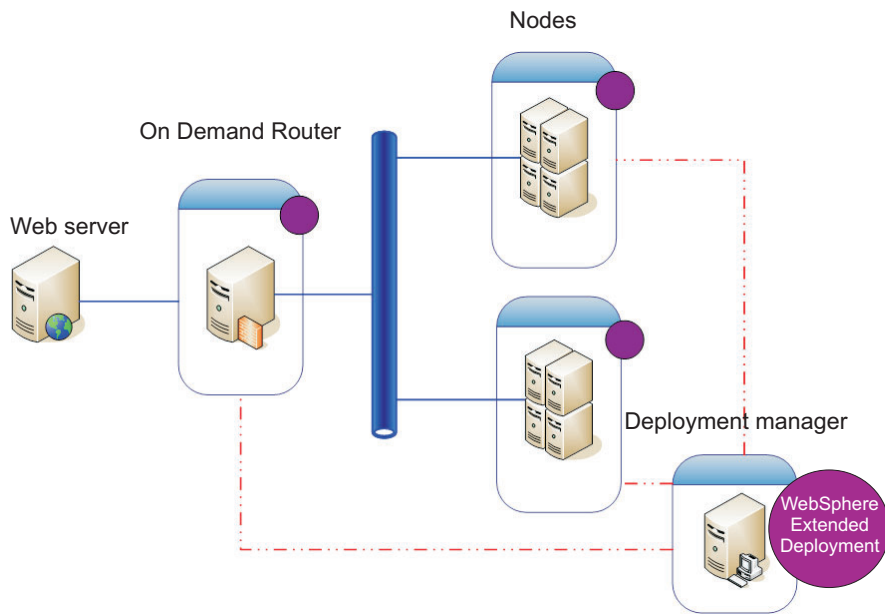
### 2 Step 2: Evaluate your hardware and system configuration



See the detailed system requirements document at <http://www.ibm.com/software/webservers/appserv/extend/requirements/>.

### 3 Step 3: Review the base architecture

The following diagram presents a simple product environment.



### 4 Step 4: Install the product



Install WebSphere Extended Deployment Data Grid Version 6.1.

For additional assistance, see the following topics in the Information Center:

- **Planning the installation**
- **Installing the product**

### More Information



For additional technical resources, see the WebSphere Extended Deployment Data Grid installation documentation and the readme file on the CD.