

WebSphere® Extended Deployment Compute Grid



Version 6.1

Quick Start Guide

This document describes a typical installation of WebSphere Extended Deployment Compute Grid Version 6.1.



National Language Version: To obtain the Quick Start Guide in other languages, print the Portable Document Format (PDF) from the CD.

Product Overview

WebSphere Extended Deployment Compute Grid Version 6.1 represents on demand capabilities in an extended environment. Use this product to enhance operational efficiency by deploying dynamic operations, service high-volume transactional workloads with linear scalability and near 100% availability, or manage large scale, continuously available WebSphere Application Server environments.

Additionally, WebSphere Extended Deployment Compute Grid offers flexible support for mixed application types. A new batch-like job referred to as native execution is now supported, and with the addition of Session Initiation Protocol (SIP) support multi-media type applications involving integration of voice and video are now possible. The product's workload management technology can support a diverse mix of application types while ensuring service levels are met for priority requests.

1 Step 1: Access your software and documentation



If you download your product from Passport Advantage, follow the instructions in the download document:

<http://www.ibm.com/support/docview.wss?rs=3023&uid=swg27009217>

For complete documentation, including installation instructions, see the WebSphere Extended Deployment Compute Grid Information Center at <http://publib.boulder.ibm.com/infocenter/wxdinfo/v6r1/index.jsp>.

2 Step 2: Evaluate your hardware and system configuration

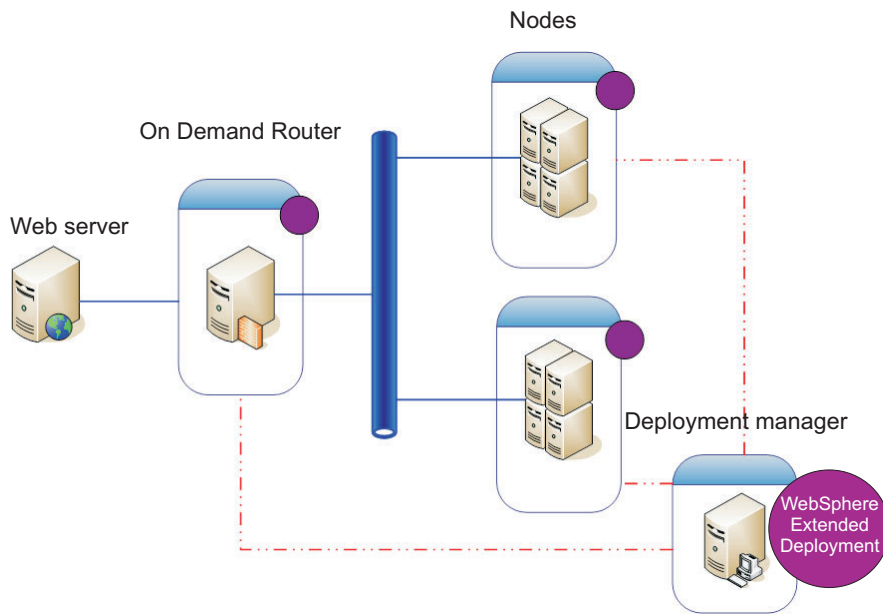


See the detailed system requirements document at

<http://www.ibm.com/software/webservers/appserv/extend/requirements/>.

3 Step 3: Review the base architecture

The following diagram presents a simple product environment.



4 Step 4: Install the product



Install WebSphere Extended Deployment Compute Grid Version 6.1.

For additional assistance, see the following topics in the Information Center:

- **Planning the installation**
- **Installing the product**

More Information



For additional technical resources, see the WebSphere Extended Deployment Compute Grid installation documentation and the readme file on the CD.