



Software Withdrawal and Service Discontinuance: IBM VisualAge Pacbase V2.0 – Replacements Available

Overview

Effective December 10, 2002, IBM will withdraw from marketing the following program licensed under the IBM Customer Agreement. Effective September 10, 2003, program services will be discontinued.

Program Name	Program Number
VisualAge® Pacbase V2.0	5648-A53

Replacement Product Information

Withdrawn Program	Replacement Program	Program Number
VisualAge Pacbase V2.0	VisualAge Pacbase V2.5 or VisualAge Pacbase V3.0	5648-A53 5655-F37

"The summary above is the entire text of this announcement."

This announcement is provided for your information only. For additional information, contact your IBM representative, call 800-IBM-4YOU, or visit the IBM home page at: <http://www.ibm.com>.

Société
Service
Adresse
Ville
A l'attention de

Cher Client,

Vous utilisez aujourd'hui la version 2.0 de VisualAge Pacbase. Afin de vous permettre de prendre suffisamment tôt les dispositions nécessaires, nous tenons à vous informer dès maintenant que le support de cette version va progressivement s'arrêter.

- Le 10 décembre 2002, prendra fin la commercialisation de cette version. Vous conserverez bien sûr la liberté d'utiliser VisualAge Pacbase V2.0 conformément au droit d'usage que vous acquittez périodiquement. Mais, vous ne pourrez plus acquérir de composants relatifs à cette version.
- Le 10 septembre 2003, la maintenance de la version 2.0 s'arrêtera. Vous ne bénéficierez plus de l'assistance téléphonique de notre équipe support, ni d'envoi de patchs correctifs.

L'annonce officielle de cette disposition est consultable sur internet, à l'adresse suivante : www2.ibm.link.ibm.com (lettre d'annonce n° ZP02-0383)

Nous nous tenons à votre écoute pour considérer cette situation nouvelle et planifier avec vous la migration de votre environnement VisualAge Pacbase actuel.

Dans cette optique, la version 3.0 saura satisfaire au mieux vos exigences de pérennité, d'ouverture et de productivité. Nous vous invitons à prendre connaissance des apports majeurs de cette version, qui sont synthétisés dans le document joint.

De plus, nous avons mis au point une offre d'accompagnement spécifique, START V3.0, destinée à faciliter l'installation et la mise en production de cette version. Déjà adoptée par de nombreux clients, cette approche vous permettra de conduire votre migration dans les meilleures conditions d'efficacité et de sécurité.

Notre laboratoire reste plus que jamais désireux de vous offrir un environnement de développement évoluant avec vos besoins. Votre interlocuteur commercial se fera un plaisir de vous fournir toute information utile à la satisfaction de cette exigence.

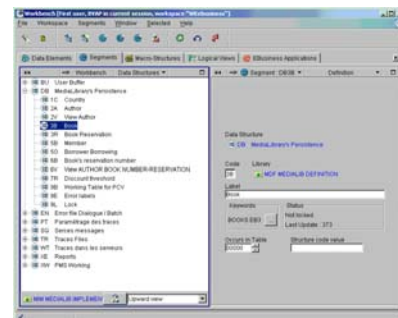
Nous vous prions de croire, cher Client, en l'assurance de nos sentiments les meilleurs.

Pierre Granier
Responsable du laboratoire IBM Paris

Pourquoi utiliser la version 3.0 de VisualAge Pacbase ?

Vous vous posez sans doute la question ...

Voici quelques bonnes raisons !



☺ Une ergonomie rénovée au service de la facilité d'utilisation et de la productivité

La **nouvelle station de travail**, le *Developer workbench*, offre un outillage totalement rénové, afin d'aider vos développeurs à produire plus rapidement des applications de meilleure qualité. L'interface graphique s'attache à restituer une image plus naturelle du système d'information et à faciliter la manipulation des composants à travers de multiples fonctions d'assistance.

La courbe d'apprentissage du produit s'en trouve considérablement réduite, permettant ainsi d'intégrer facilement de nouveaux développeurs.

☺ Un contexte de développement en phase avec l'évolution de vos besoins

L'intégration est au cœur de l'e-business. VisualAge Pacbase version 3.0 vous aide à relever ce défi : vous pouvez intégrer votre capital applicatif (applications traditionnelles, services métier) dans vos nouvelles applications e-business quelle que soit l'architecture logicielle que vous souhaitez mettre en œuvre. De plus, le rôle de vos développeurs traditionnels se trouve considérablement valorisé grâce à une coopération renforcée avec les développeurs Java.

VisualAge Pacbase version 3.0 offre une puissance de développement accrue : un modèle d'information e-business restructuré afin de faciliter la mise en œuvre des technologies e-business, un nouvel utilitaire permet de tester les fonctions serveur d'une application avant même de disposer des composants clients, le support des composants EJB ...

VisualAge Pacbase reste au cœur de l'évolution des technologies et des standards garantissant l'évolutivité et la pérennité de vos développements : intégration avec la plateforme logicielle IBM WebSphere, interface avec les outils partenaires leaders (Rational Rose, Clearcase), support de Linux ...

☺ Des fonctions d'administration confortables et évoluées favorisant la démarche qualité de votre entreprise

Le **nouvel environnement d'administration**, l'*Administrator workbench*, facilite la gestion de votre environnement de développement en offrant un plus grand confort d'utilisation et de nouveaux moyens d'action : souplesse dans la configuration de l'espace de travail, gestion de profils utilisateurs, procédures simplifiées. Il constitue en outre un véritable outil de contrôle qualité permettant de faire respecter, de façon simple et efficace, les normes définies dans votre entreprise.

☺ Un environnement plus ouvert et plus extensible

Le **référentiel VisualAge Pacbase s'ouvre à l'ensemble de vos outils de travail** en autorisant le stockage de fichiers provenant de logiciels tiers (traitements de texte, tableurs, éditeurs d'images ...). Il simplifie également la création, la description et la gestion de nouveaux concepts d'information, remplissant ainsi sa vocation de fédérateur des données d'entreprise.

Company
Name
Address

Dear Customer,

You currently use version 2.0 of VisualAge Pacbase. So that you can make the necessary arrangements as far in advance as possible, we would like to take this opportunity to inform you that support for this version will be progressively discontinued.

- From 10 December 2002, this version will no longer be on sale. Of course, you will still be free to use VisualAge Pacbase V2.0 in accordance with the usage fee that you pay periodically. However, you will no longer be able to purchase components for this version.
- On 10 September 2003, maintenance for V2.0 will be discontinued. You will no longer be able to enjoy hotline support through our support team, nor will you be sent corrective patches.

The official announcement of this arrangement can be viewed on the Internet at the following address: www2.ibm.link.ibm.com (announcement letter n° ZP02-0383)

We remain at your disposal to consider this new situation and to help you plan the migration of your current VisualAge Pacbase environment.

From this perspective, version 3.0 will be able to best meet your requirements in terms of sustainability, openness and productivity. We would like to draw to your attention the major benefits of this version, which are given in the enclosed document. Moreover, we have devised a special services offering called START V3.0, which is designed to facilitate the implementation of this version. This approach, which has already been adopted by numerous customers, will enable you to perform your migration as efficiently and securely as possible.

Our laboratory is now, more than ever, striving to offer you a development environment that reflects your current requirements. Your sales representative will be delighted to supply you with any information that will help to fulfill this requirement.

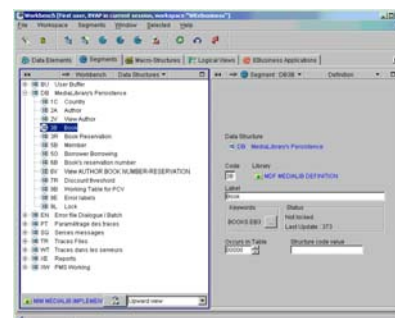
Yours sincerely,

Pierre Granier
IBM Paris Laboratory Manager

Why use version 3.0 of VisualAge Pacbase?

You must be wondering why...

Here are a few good reasons!



☺ A new, more user friendly workspace that helps increase your productivity

The **new workstation**, the *Developer workbench*, offers a totally overhauled set of tools that will help your developers produce the highest quality applications more quickly. The graphic interface sets out to reproduce a more natural image of the information system and to facilitate the manipulation of components using multiple help functions.

This product's learning curve is considerably less steep; therefore new developers can easily be added.

☺ A context of development to reflect your changing requirements

Integration is at the heart of e-business. VisualAge Pacbase version 3.0 helps you take up this challenge: you can integrate your application assets (traditional applications, business services) into your new e-business applications whatever software architecture you want to implement. In addition, the role of your traditional developers will be enhanced thanks to closer co-operation with the Java developers.

VisualAge Pacbase version 3.0 offers you increased development capabilities: an e-business information model restructured to facilitate the implementation of e-business technologies, a new utility enabling to test an application's server functions before even having the client components, the EJB components support, etc.

VisualAge Pacbase is at the heart of the development of technology and standards, ensuring the scalability and sustainability of your developments: integration with the IBM WebSphere software platform, interface with leading partner tools (Rational Rose, Clearcase), Linux support, etc.

☺ Easy to use and advanced administration functions making for a quality approach in your company

The **new administration environment**, the *Administrator workbench*, makes your development environment easier to manage by offering greater ease of use and new operating methods: flexible configuration of the workspace, user-profile management and simplified procedures. It also comprises a true quality control tool, which will enable to comply, in a simple yet effective way, with the standards set out by your company.

☺ A more open and extensible environment

The **VisualAge Pacbase repository is compatible with all your work tools** by allowing the storage of files from third-party software packages (word-processing, spreadsheets, image editors, etc.). It also simplifies the creation, description and management of new information concepts, thereby performing its role of unifier of corporate data.

Company

Name

Address

City

USA

Dear Customer,

You currently use version 2.0 of VisualAge Pacbase. So that you can make the necessary arrangements as far in advance as possible, we would like to take this opportunity to inform you that support for this version will be progressively discontinued.

- From 10 December 2002, this version will no longer be on sale. Of course, you will still be free to use VisualAge Pacbase V2.0 in accordance with the usage fee that you pay periodically. However, you will no longer be able to purchase components for this version.
- On 10 September 2003, maintenance for V2.0 will be discontinued. You will no longer be able to enjoy hotline support through our support team, nor will you be sent corrective patches.

The official announcement of this arrangement can be viewed on the Internet at the following address: www2.ibmblink.ibm.com (announcement letter n° 902-181)

We remain at your disposal to consider this new situation and to help you plan the migration of your current VisualAge Pacbase environment.

From this perspective, version 3.0 will be able to best meet your requirements in terms of sustainability, openness and productivity. We would like to draw to your attention the major benefits of this version, which are given in the enclosed document.

Moreover, we have devised a special services offering called START V3.0, which is designed to facilitate the implementation of this version. This approach, which has already been adopted by numerous customers, will enable you to perform your migration as efficiently and securely as possible.

Our laboratory is now, more than ever, striving to offer you a development environment that reflects your current requirements. Your sales representative will be delighted to supply you with any information that will help to fulfill this requirement.

Yours sincerely,

Pierre Granier

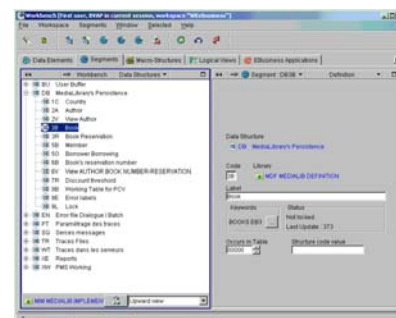
IBM Paris Laboratory Manager



Why use version 3.0 of VisualAge Pacbase?

You must be wondering why...

Here are a few good reasons!



☺ A new, more user friendly workspace that helps increase your productivity

The **new workstation**, the *Developer workbench*, offers a totally overhauled set of tools that will help your developers produce the highest quality applications more quickly. The graphic interface sets out to reproduce a more natural image of the information system and to facilitate the manipulation of components using multiple help functions.

This product's learning curve is considerably less steep; therefore new developers can easily be added.

☺ A context of development to reflect your changing requirements

Integration is at the heart of e-business. VisualAge Pacbase version 3.0 helps you take up this challenge: you can integrate your application assets (traditional applications, business services) into your new e-business applications whatever software architecture you want to implement. In addition, the role of your traditional developers will be enhanced thanks to closer co-operation with the Java developers.

VisualAge Pacbase version 3.0 offers you increased development capabilities: an e-business information model restructured to facilitate the implementation of e-business technologies, a new utility enabling to test an application's server functions before even having the client components, the EJB components support, etc.

VisualAge Pacbase is at the heart of the development of technology and standards, ensuring the scalability and sustainability of your developments: integration with the IBM WebSphere software platform, interface with leading partner tools (Rational Rose, Clearcase), Linux support, etc.

☺ Easy to use and advanced administration functions making for a quality approach in your company

The **new administration environment**, the *Administrator workbench*, makes your development environment easier to manage by offering greater ease of use and new operating methods: flexible configuration of the workspace, user-profile management and simplified procedures. It also comprises a true quality control tool, which will enable to comply, in a simple yet effective way, with the standards set out by your company.

☺ A more open and extensible environment

The **VisualAge Pacbase repository is compatible with all your work tools** by allowing the storage of files from third-party software packages (word-processing, spreadsheets, image editors, etc.). It also simplifies the creation, description and management of new information concepts, thereby performing its role of unifier of corporate data.