

Information Management

IBM InfoSphere Metadata Workbench

Providing end-to-end visibility into information

Highlights

- **Support governance, compliance and regulatory requirements**
- **Reduce IT costs of ownership by providing insight into the interoperability and reuse of information assets**
- **Increase trust in where the data is coming from and what happens to it as it moves through the integration process**
- **Enrich the value of information by depicting relationships between data**
- **Provide a complete picture of data integration flows processed by IBM® InfoSphere™ Information Server or by third-party applications**
- **Drive better business decisions through understanding the impact of changes on your business processes**

Turn your data into a strategic asset

The volume of data that organizations need to manage is often staggering. This information is frequently spread across many different systems, often redundantly, and represented in many different formats. As companies seek a more trusted and transparent view of their information, they need a way to locate, understand and relate their many enterprise information sources and processes.

The Society for Information Management (SIM) 2008 survey of the top 10 concerns of CIOs¹ lists both “strategic IT planning” and “making better use of information” as critical issues in the minds of today’s CIOs. These concerns clearly emphasize the importance of investing in tools that can help companies reuse information and

processes across the enterprise and can help simplify their information integration challenges.

IBM InfoSphere Information Server provides a complete platform for integrating and enriching information across disparate source systems. Using an active and shared metadata repository layer, InfoSphere Information Server supports a full range of integration activities and user roles with collaboration and reuse principles. These artifacts include technical metadata about the various sources of information, business metadata that describes the business meaning and usage of information and operational metadata that describes what happens within the integration process.

IBM InfoSphere Metadata Workbench provides a powerful metadata management interface that supports not only InfoSphere Information Server metadata but also other key metadata that play critical roles in data integration processes. A centralized and holistic view across the entire landscape of data integration processes, with visibility into data transformations that operate inside and outside of InfoSphere Information Server, arms businesses with critical information that can lead to better decisions.

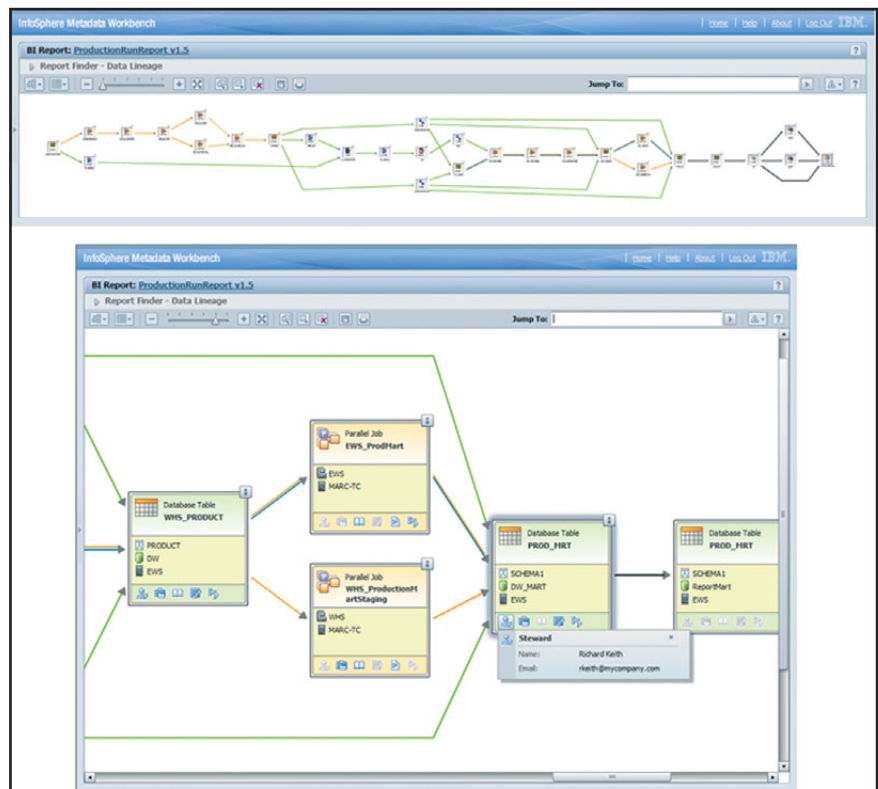


Figure 1. InfoSphere Metadata Workbench shows data lineage flow on an integration process with transformations performed by InfoSphere Information Server as well as third-party applications.

Data validation and traceability is an important factor in complying with regulations such as the Sarbanes-Oxley Act and Basel II. These regulatory and compliance rules require companies to verify the accuracy, history and origin of their information. InfoSphere Metadata Workbench supports these compliance requirements by providing visibility into where data is coming from and what happens to it as it transforms across the enterprise. This is a critical part of building trust in enterprise information.

This powerful tool also allows you to assess the impact of change on your IT landscape. IT staff can quickly find and notify the owners or stewards of data when a potential impact is identified, helping to reduce the chance of unforeseen costs, the impact of wrong decisions and the loss of business opportunities.

IBM InfoSphere Metadata Workbench helps trace data relationships

IBM InfoSphere Metadata Workbench provides a visual, Web-based exploration of information assets and data flows. It includes expanded capabilities

to help visualize data integration processes of any shape or form, such as those in third-party applications, extract, transform and load (ETL) tools, external Java™ and mainframe programs and stored procedures. This open interface gives organizations the flexibility and scalability to maintain and integrate metadata across enterprise landscapes.

InfoSphere Metadata Workbench outlines the complete lineage of fields from applications, reports or data warehouses back to source systems, surfacing the processes and transformations that occurred along the way. Figure 1 shows a graphical view of this data lineage. InfoSphere Metadata Workbench also graphically displays the impact of changes to any information asset, and highlights the services and processes that would be affected by that change. Figure 2 shows the impact on a downstream application as a result of making a change to a source database.

The data stewardship capabilities offered through this tool help companies promote data governance by establishing information responsibility and accountability. Figure 3 shows InfoSphere Metadata Workbench data stewardship.

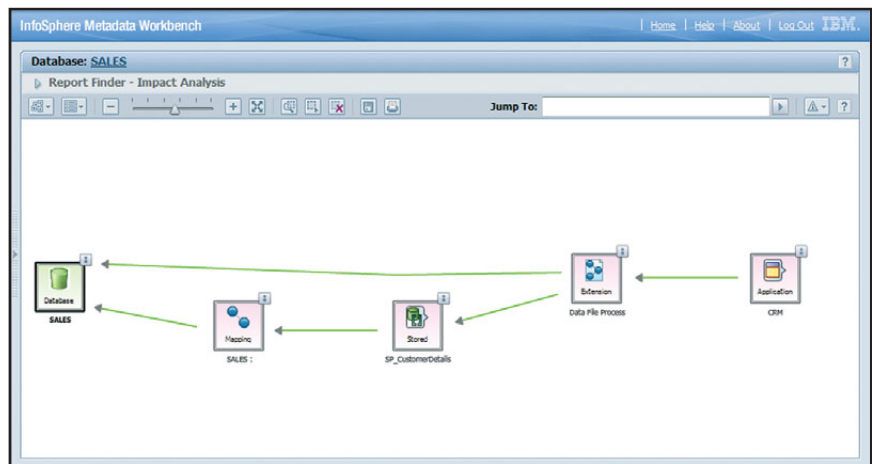


Figure 2. InfoSphere Metadata Workbench shows the impact on jobs, reports and downstream applications when data is changed. In this example, changes to the SALES database will have an impact on the CRM application.

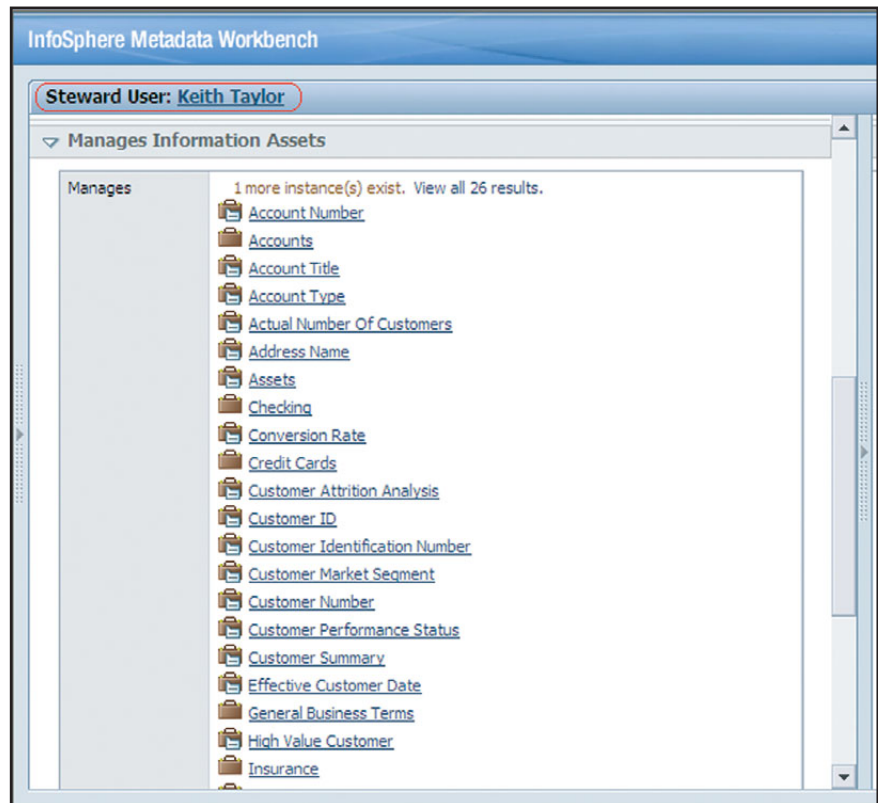


Figure 3. InfoSphere Metadata Workbench data stewardship helps promote data governance.

The search and query capabilities of InfoSphere Metadata Workbench are designed to enable developers, administrators, project managers and analysts to explore information in a customizable format that fits their business needs. For example, a business analyst can search information on business intelligence reports that were updated in the last 24 hours and are owned by a certain data steward. The advanced search interface of InfoSphere Metadata Workbench provides users with a graphical interface (see Figure 4) to build complex requests against business, technical and operational metadata. These requests can be run immediately or persisted for later availability to a wider audience.

Features of InfoSphere Metadata Workbench

InfoSphere Metadata Workbench highlights include:

- **Web-based navigation** of key information assets through an interactive and powerful interface provides an easy way for users to access critical information.
- **Visual cross-tool and cross-platform data lineage** provides an understanding of the complete information lineage, including where data came from and what happened to it as it moved across data integration processes, with extended visibility into enterprise data flows outside of InfoSphere Information Server.

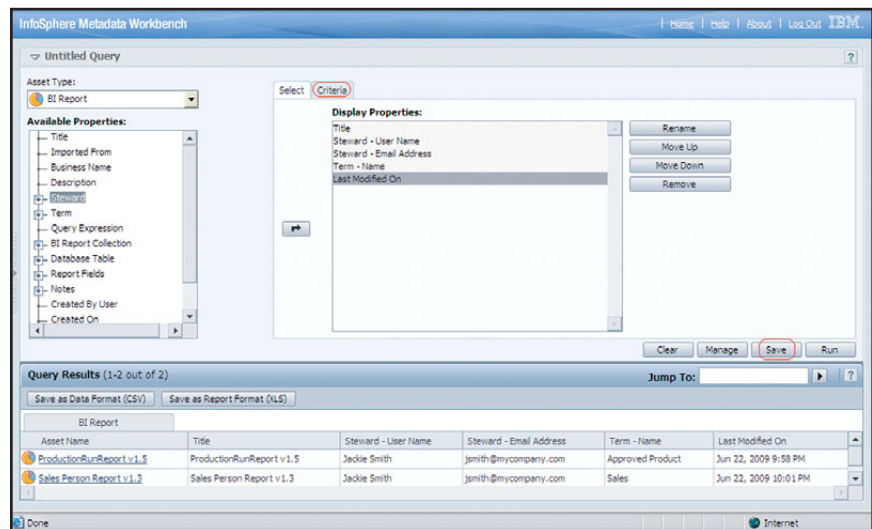


Figure 4. InfoSphere Metadata Workbench query capabilities allow users to explore information in a customizable format that fits their business needs.

- **Visual cross-tool impact analysis** allows complete understanding of the impact of a change before the change is made, even when the impact extends beyond a single tool.
- **Reporting on information assets**, through simple and advanced search with save, repeat and publish capabilities, helps business and IT users to quickly understand complex environments.
- **Automated linkages** to InfoSphere Information Server metadata services help organizations reduce their overall IT costs and accelerate productivity.
- **Collaboration and shared metadata** with IBM InfoSphere Business Glossary promotes data stewardship, business and IT alignment and better understanding of information assets.
- **Various access levels for different user types** provide the flexibility to customize requirement management and enforce information security.
- **Globalization and translation support** for simplified Chinese, traditional Chinese, Japanese, Korean, French, German, Italian, Spanish and Brazilian Portuguese enables customers around the world to use InfoSphere Metadata Workbench in their native language.

InfoSphere Information Server and InfoSphere Foundation Tools deliver trusted information

Organizations face the challenge of locating information and getting it where it is needed in the form needed—and then discerning further insights from it. Information validity and control are additional concerns. The hurdles only mount if businesses cannot ensure access to authoritative, consistent, timely and complete information.

InfoSphere Information Server is a revolutionary software platform that helps you derive more value from the complex, heterogeneous information spread across your systems. It enables your organization to integrate disparate data

and deliver trusted information wherever and whenever needed, in line and in context, to specific people, applications and processes. It helps business and IT personnel collaborate to understand the meaning, structure and content of any type of information across any source. It provides breakthrough productivity and performance for cleansing, transforming and moving this information consistently and securely throughout the enterprise, so it can be accessed and used in new ways to drive innovation, increase operational efficiency and help lower risk.

IBM InfoSphere Foundation Tools help you understand the information you have so you can target tactical projects to gain incremental value that can positively affect your business's bottom line.

To do this, you need a blueprint to correlate your business requirements with the information and technical assets you have within your enterprise.

InfoSphere Foundation Tools help you assess where you are and where you want to be, and help you build a blueprint to get there.

System requirements

For the client, InfoSphere Metadata Workbench requires installation of Microsoft® Internet Explorer Version 6.0 or higher. For current, detailed hardware and software system requirements for InfoSphere Information Server product modules, visit ibm.com/software/data/infosphere



For more information

To learn more about InfoSphere Metadata Workbench, data governance and metadata management, please visit:

- ibm.com/software/data/infosphere/metadata-workbench
- ibm.com/software/sw-library/en_US/detail/M969392H43073W75.html
- ibm.com/software/data/infosphere/foundation-tools/index.html

To learn more about InfoSphere Information Server and other information integration solutions from IBM, contact your IBM marketing representative or IBM Business Partner, or visit ibm.com/software/data/infosphere

© Copyright IBM Corporation 2009

IBM Corporation
Software Group
Route 100
Somers, NY 10589 U.S.A.

Produced in the United States of America
July 2009
All Rights Reserved

IBM, the IBM logo, ibm.com and InfoSphere are trademarks or registered trademarks of International Business Machines Corporation in the United States, other countries, or both. If these and other IBM trademarked terms are marked on their first occurrence in this information with a trademark symbol (® or ™), these symbols indicate U.S. registered or common law trademarks owned by IBM at the time this information was published. Such trademarks may also be registered or common law trademarks in other countries. A current list of IBM trademarks is available on the Web at "Copyright and trademark information" at ibm.com/legal/copytrade.shtml

Java and all Java-based trademarks and logos are trademarks of Sun Microsystems, Inc. in the United States, other countries or both.

Microsoft is a trademark of Microsoft Corporation in the United States, other countries or both.

Other product, company or service names may be trademarks or service marks of others.

References in this publication to IBM products or services do not imply that IBM intends to make them available in all countries in which IBM operates. Offerings are subject to change, extension or withdrawal without notice.

All statements regarding IBM future direction or intent are subject to change or withdrawal without notice and represent goals and objectives only.

The information contained in this document is provided for informational purposes only. While efforts were made to verify the completeness and accuracy of the information contained in this document, it is provided "as is" without warranty of any kind, express or implied. In addition, this information is based on IBM's current product plans and strategy, which are subject to change by IBM without notice. IBM shall not be responsible for any damages arising out of the use of, or otherwise related to, this document or any other documents. Nothing contained in this document is intended to nor shall have the effect of creating any warranties or representations from IBM Software.

¹ Duvall, Mel. "SIM Releases Top 10 Concerns of CIOs." November 2008. www.ciozone.com/index.php/Management/SIM-Releases-Top-10-Concerns-Of-CIOs.html



Recyclable, please recycle.