



STOP
FOLLOWING.
START
LEADING.

Taking Charge of Change

31st January 2008



A vertical photograph on the left side of the slide shows a road at night with long-exposure light trails from cars, creating a sense of motion and direction.

STOP
FOLLOWING.
START
LEADING.

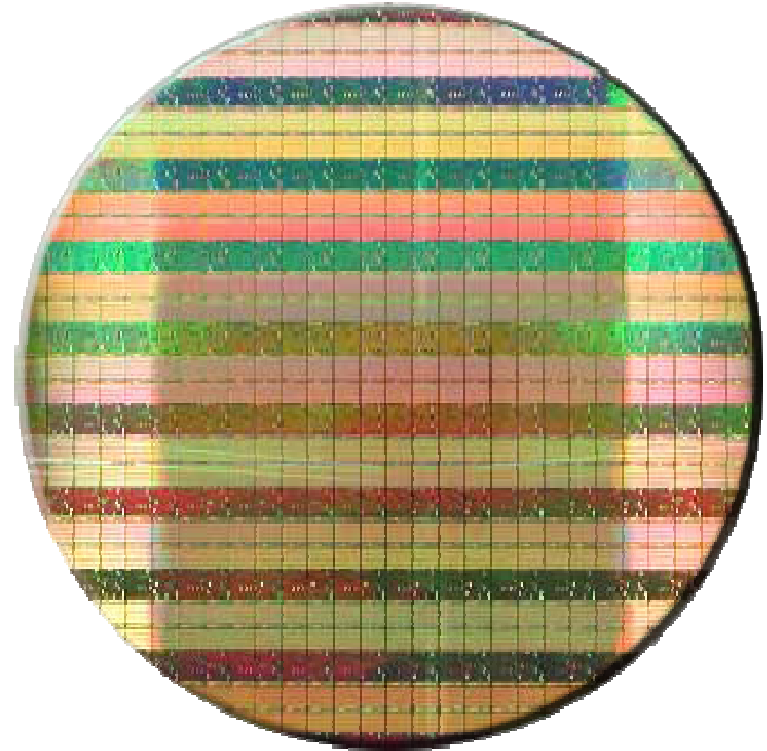
Competing Through Change

31st January 2008

Steve Mills
Senior VP and Group Executive - IBM Software Group

Smart Objects

- Computing not just from computers
- 2001: 60 million transistors per human
- 2010: One billion transistors per human



Source: IBM Global Technology Outlook, 2005



TAKING CHARGE OF CHANGE

© 2007 IBM Corporation

Communication / Collaboration

Internet Usage

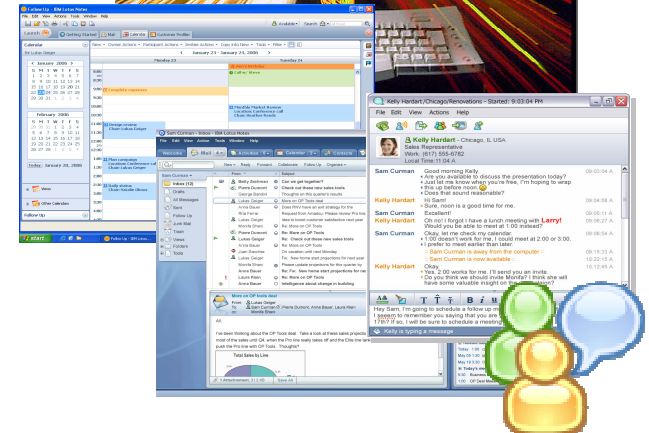
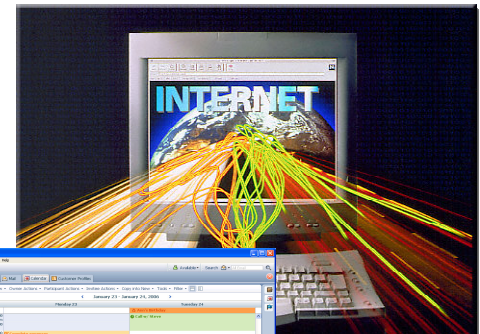
1996: 48 million users
2006: 1.1 billion users
2010: 1.6 billion users (est.)

e-mail Mailboxes

1998: 253 million (1 trillion e-mails)
2006: 1.6 billion (22 trillion e-mails)
2010: 2.0 billion (est.)

Corporate Instant Messaging

2002: 41 million users
2010: 250 million users (est.)



*In 2006, e-mail traffic from one person to another – i.e., excluding spam – accounted for **6 exabytes (or 3%) of the digital universe***

Source: IDC, 2007; IBM



TAKING CHARGE OF CHANGE

© 2007 IBM Corporation

The Digital Universe

Information Created, Captured and Replicated

**6-Fold Growth
in Four Years**



**2006
161 Exabytes**



**2010
988 Exabytes**

About **25% of the digital universe is original** (pictures recorded, keystrokes in an e-mail, phone calls etc.), while **75% is replicated** (e-mails forwarded, backed up transaction records, etc.)

Source: IDC, 2007



TAKING CHARGE OF CHANGE

© 2007 IBM Corporation

How We Deal With All This Content

Information workers spend (hours per week):

- 14.5 hours reading and answering e-mail
- 13.3 hours creating documents
- 9.6 hours searching for information
- 9.5 hours analyzing information



An organization employing 1,000 knowledge workers **loses \$5.7 million** annually just in time wasted having to reformat information as they move between applications

Not finding the information costs the same organization **an additional \$5.3 million per year**



TAKING CHARGE OF CHANGE

© 2007 IBM Corporation

The Virtual Workplace

58% of IT Executives consider their company to be a virtual workplace

90% of employees work in locations other than headquarters

Between *60% and 70%* of employees work in different locations from their managers

The number of virtual workers has increased by *800%* over the past five years



Source: Nemertes Research, Inc.



TAKING CHARGE OF CHANGE

© 2007 IBM Corporation

IBM's CEO Study

750 CEOs cited *collaborative innovation* as the most important competitive advantage they must cultivate

IBM 2010 CIO Outlook

- Priorities:
1. Employee driven integration
 2. Global collaborative innovation
 3. Aggressive pursuit of simplicity and hosting



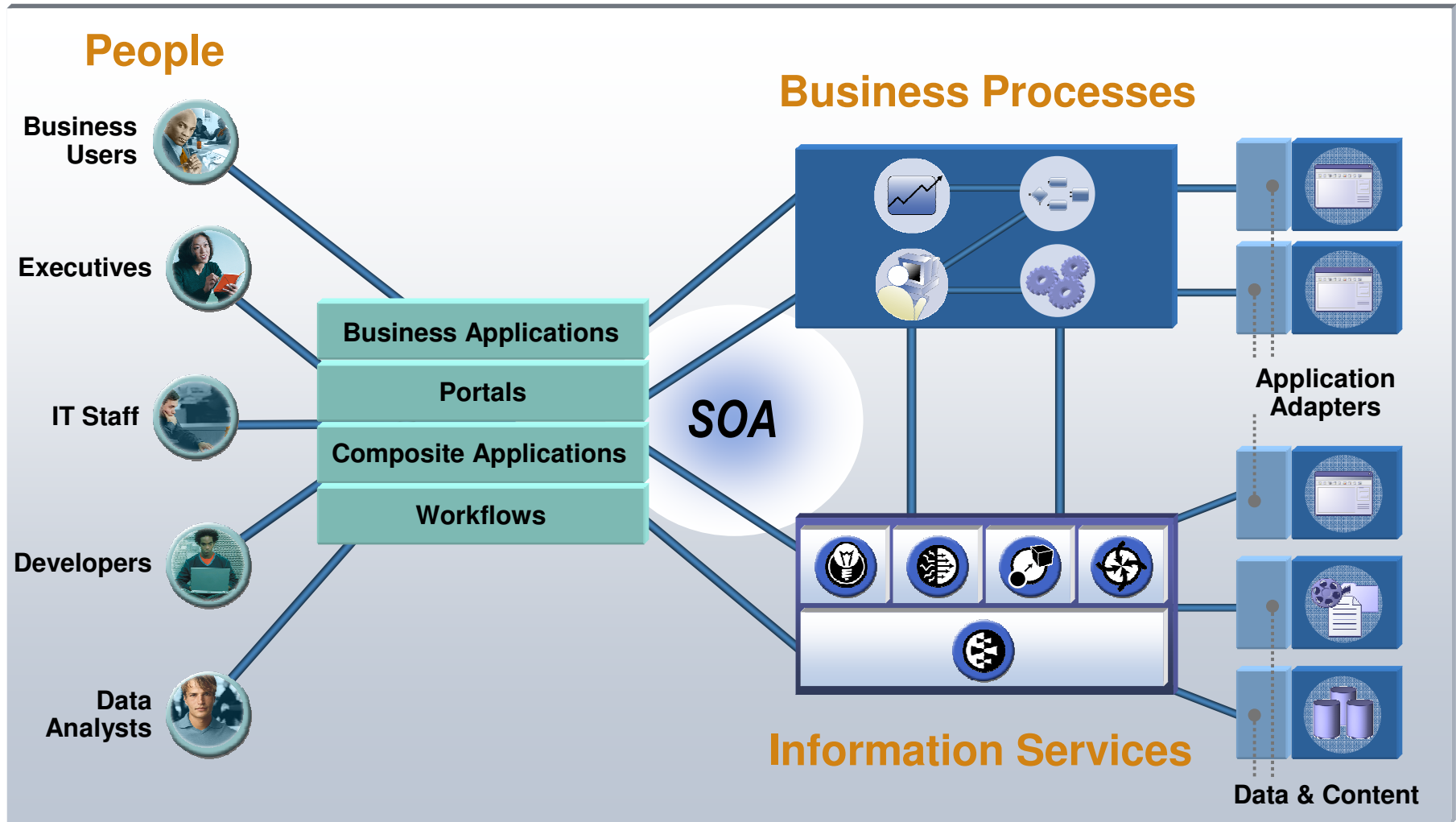
Digital Collaboration Infrastructure



TAKING CHARGE OF CHANGE

© 2007 IBM Corporation

SOA Connects People, Processes, and Information



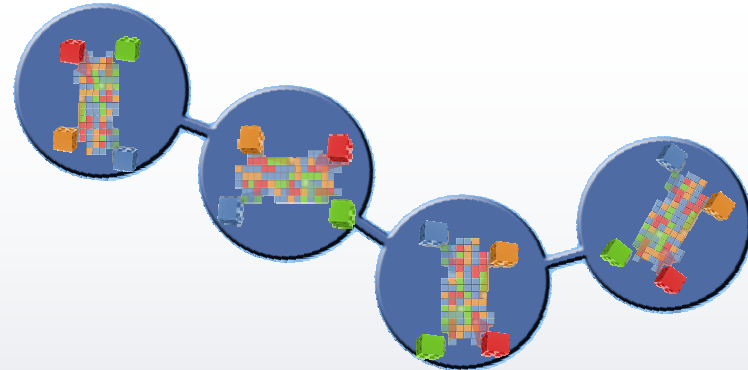
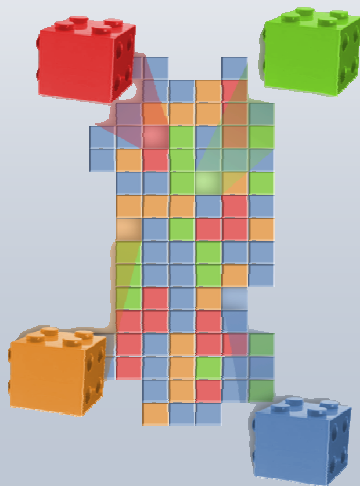
TAKING CHARGE OF CHANGE

© 2007 IBM Corporation

Service Oriented Architecture Changes the Game

SOA allows you

to create a set of related and integrated "services" -- i.e., repeatable business tasks -- that support a business process."



SOA is at the core of Business Process Management

SOA improves how you *Design, Manage, and Optimize* your business processes by enabling:

- Solution Building Efficiency
- Reuse of existing assets
- Flexibility in change



TAKING CHARGE OF CHANGE

© 2007 IBM Corporation



Standard Life Insurance (UK)

Improved Distribution Channel

SOA Solution

- Exposed and deployed business services for reuse by business partners with a service oriented architecture approach to make internal systems directly available to distribution channels

Business Benefits

- Simplified process of doing business with multiple channels
- **Reuse of 51% of services**, resulting in **savings of over £3 million** in development costs
- **Increased transaction rate by 900%** without increasing operations staff
- Improved responsiveness to market change and customer needs
- Improved quality & manageability of business applications

Travelex (UK)

Business Service Reuse



SOA Solution

- Travelex consolidated its disparate foreign exchange systems onto an open, SOA integration platform, eliminating the need for point-to-point integration; a standardized application development environment enables Travelex to reuse existing software components

Business Benefits

- **85% reduction in time required** for customer processing of foreign exchange transactions
- Administrative and application **support costs reduced by 20%**
- Employing reusable software components decreased application development costs and **reduced cycle time by 30%**
- Easy integration with partners

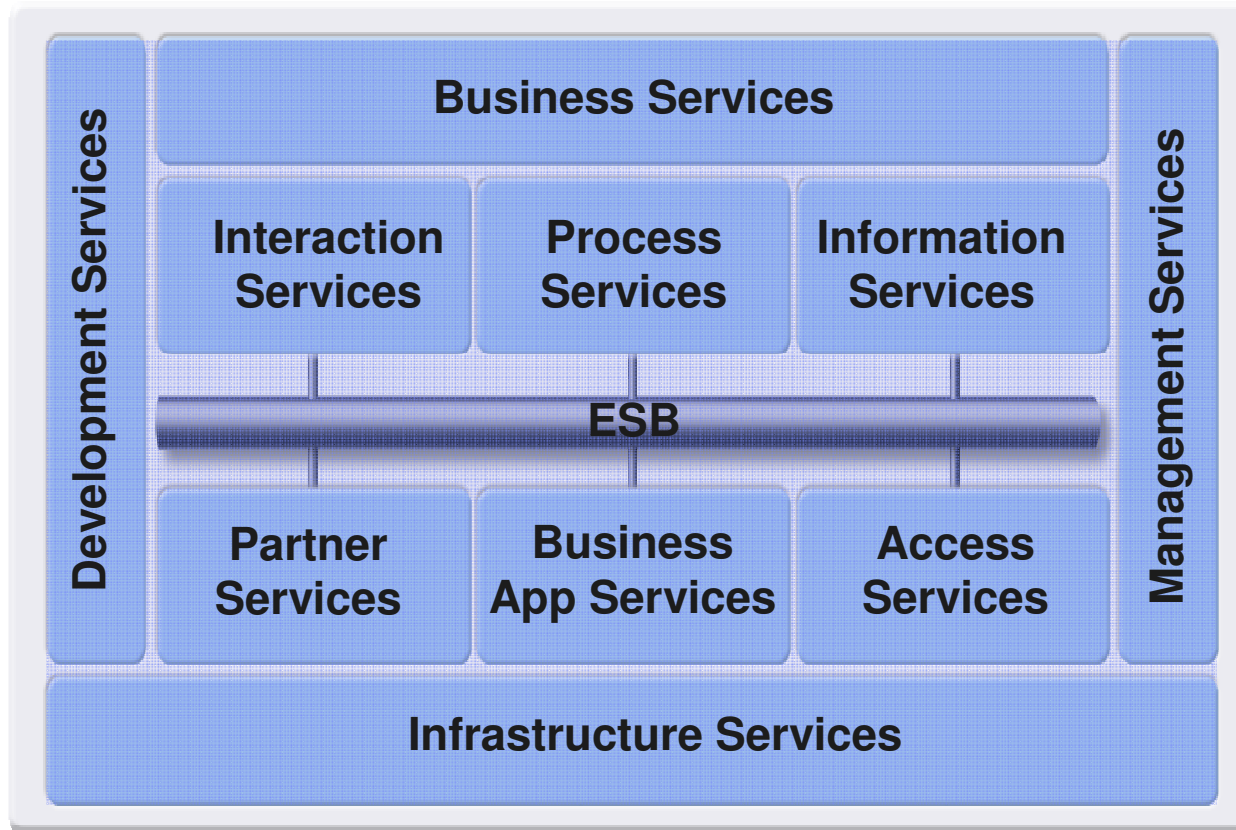


TAKING CHARGE OF CHANGE

© 2007 IBM Corporation

Robust Capabilities Connected in an Open, Flexible Manner

IBM's SOA Reference Architecture



Modular product portfolio built on open standards

Functionally rich, adopted incrementally

Simple to develop, deploy and manage

Integrated role-based tools for development & administration

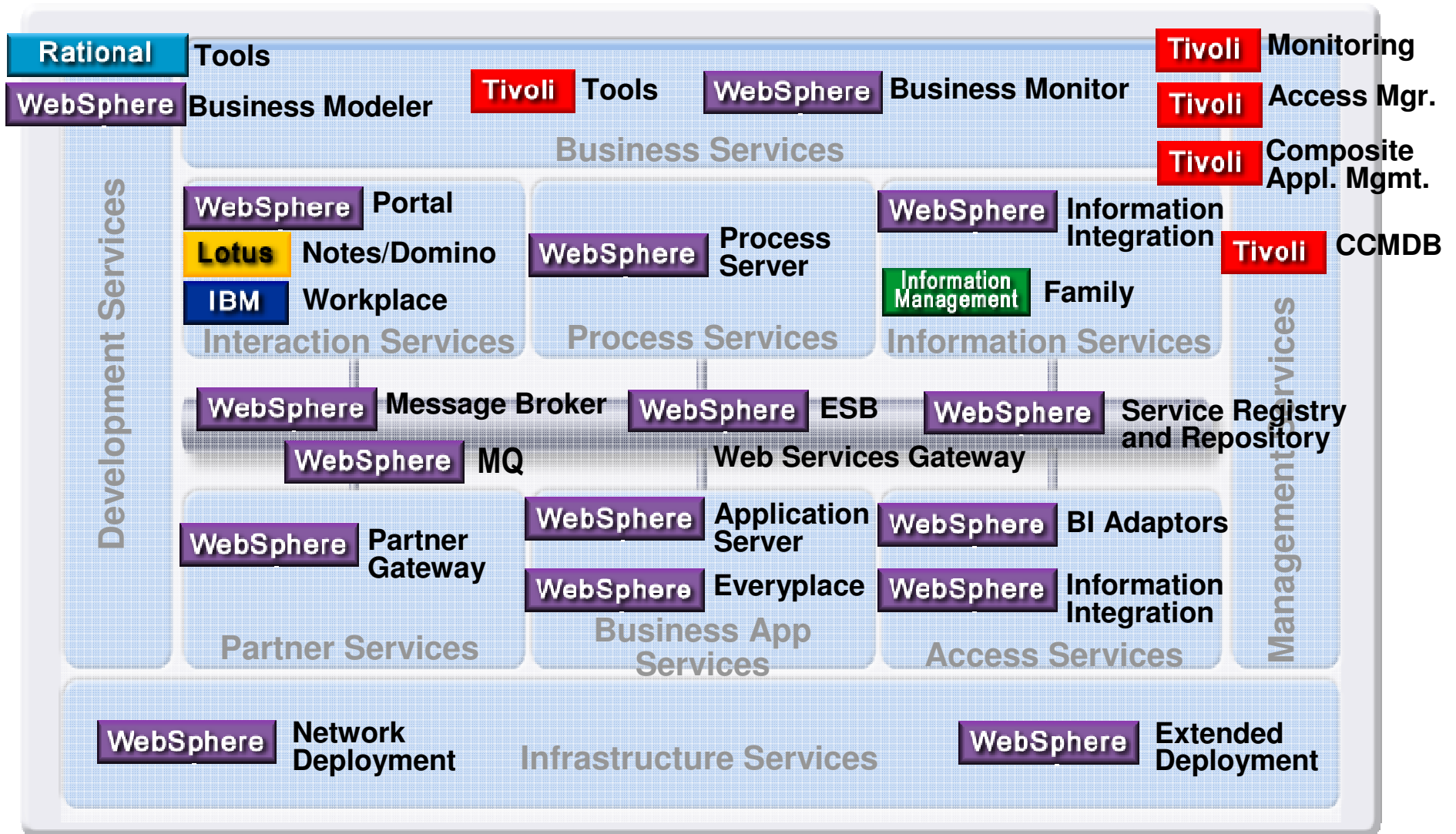
...delivering the value of SOA, today



TAKING CHARGE OF CHANGE

© 2007 IBM Corporation

IBM's SOA Reference Architecture

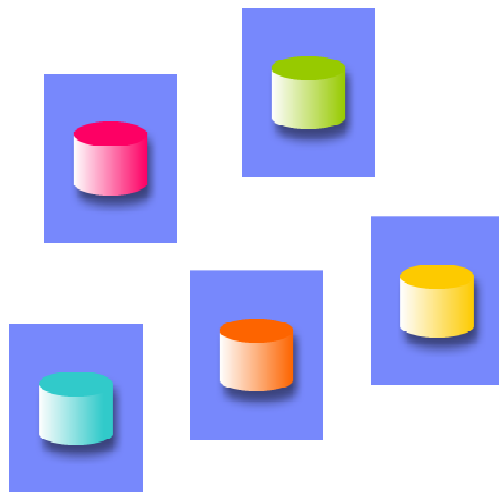


TAKING CHARGE OF CHANGE

© 2007 IBM Corporation

Information Management Evolution

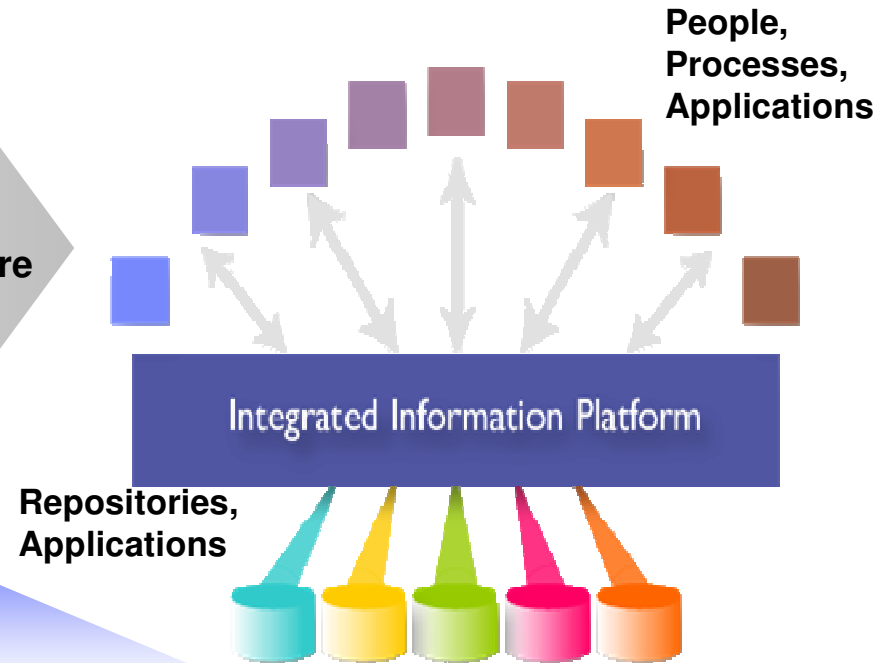
Disconnected Silos of Information



70% of people's time can be spent finding relevant information

**Rich Standards,
Flexible Architecture**

Dynamically Deliver Master Information



60%+ of CEOs say they need to do a better job leveraging information

5X more value creation by organizations effective at using information



TAKING CHARGE OF CHANGE

© 2007 IBM Corporation

New York City Police Department

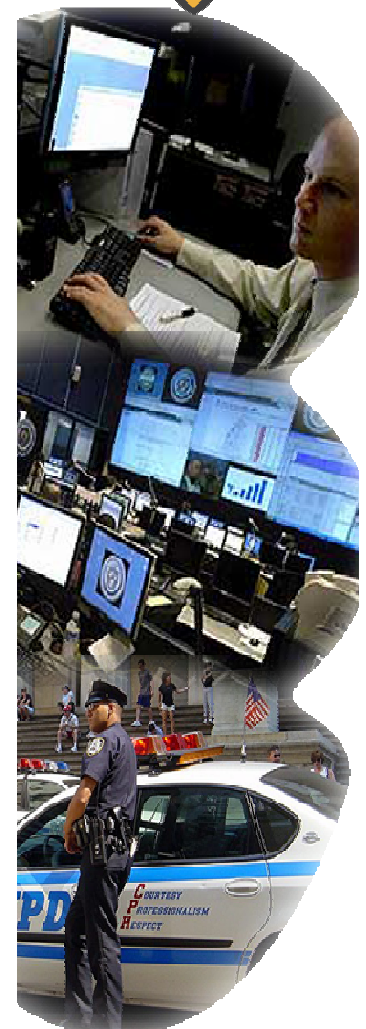
Transforming the Use of Information

Solution

- Created real-time Crime Information Warehouse providing a single, easy-to-use point of access integrating data from multiple siloed crime data systems
- Use of business intelligence software, along with GIS mapping and visualization tools, provides ability to detect crime patterns as they are forming

Benefits

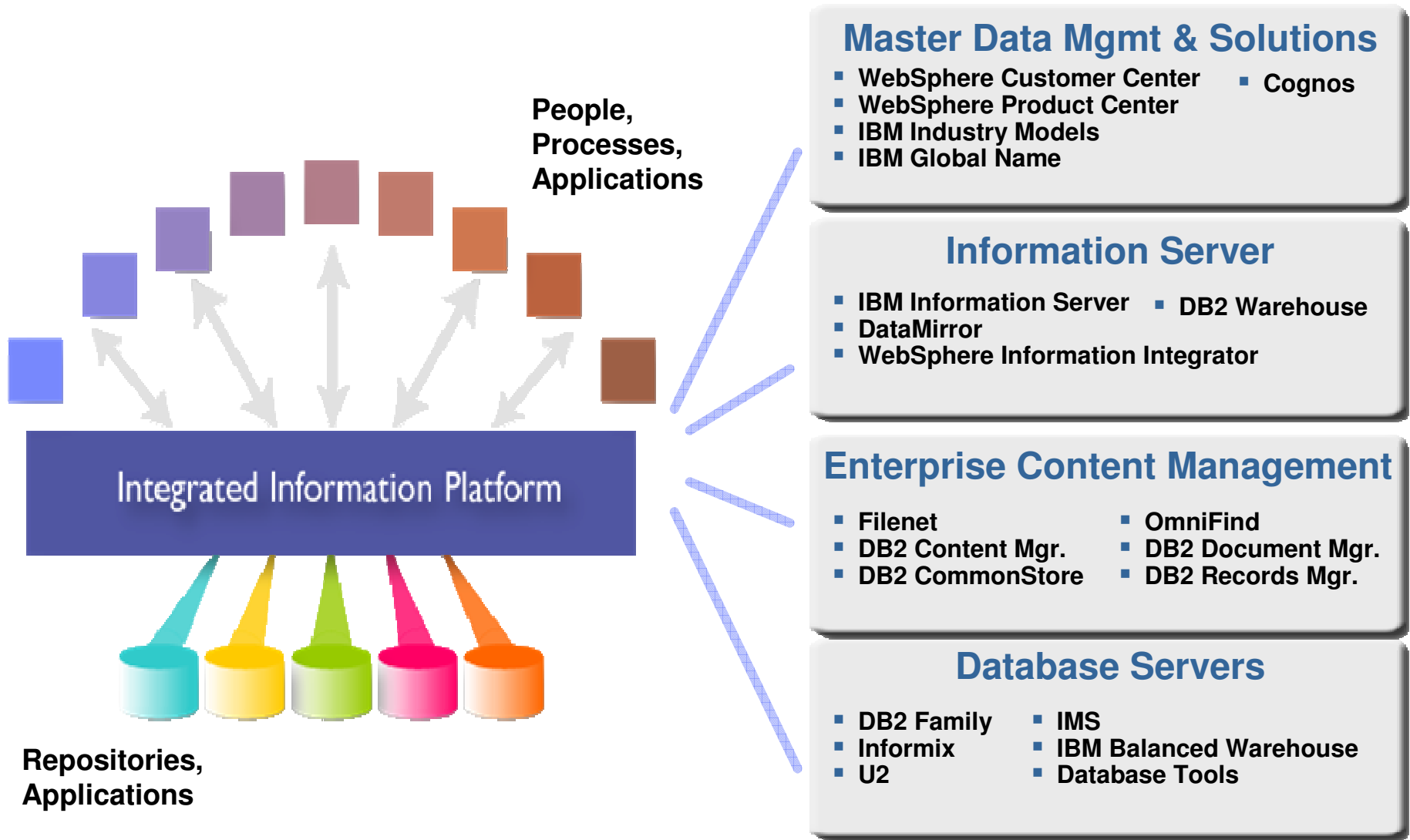
- Support for more proactive policing tactics by virtue of an ability to see crime trends as they are happening
- Faster and higher rate of case closing through more efficient gathering and analysis of crime-related data
- Reports that could take weeks or months are now available instantly



TAKING CHARGE OF CHANGE

© 2007 IBM Corporation

IBM's Information Management Portfolio

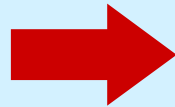


TAKING CHARGE OF CHANGE

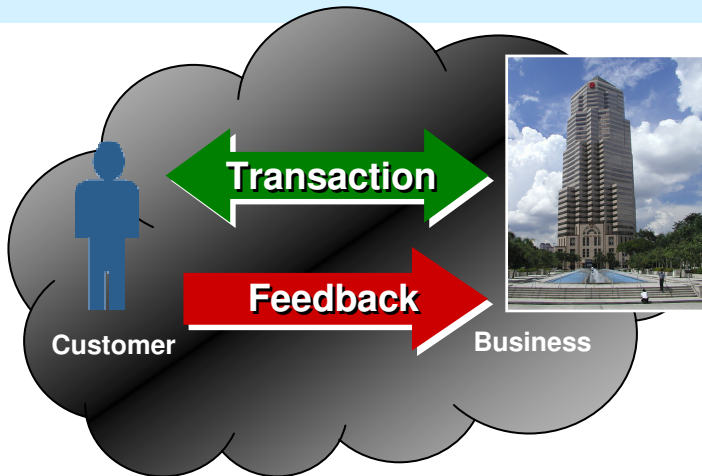
© 2007 IBM Corporation

The Evolving Web Platform

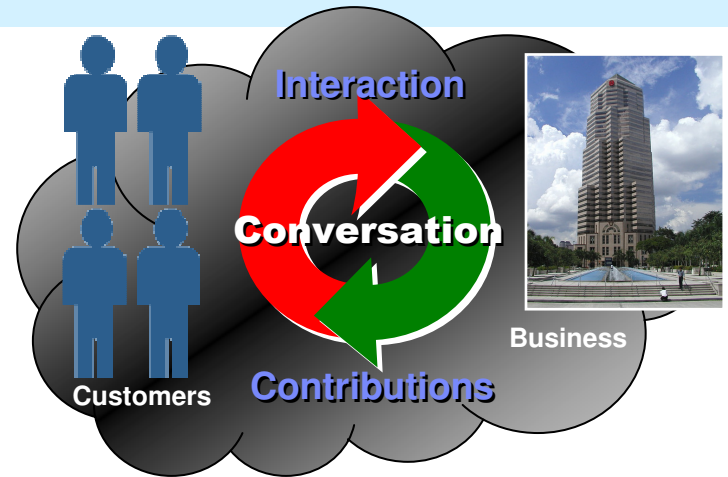
Web 1.0 was about **connecting computers** and making technology more efficient for computers.



Web 2.0 is about **connecting people**, and making technology efficient for people.



Web 2.0 changes the way in which businesses interact with its customers



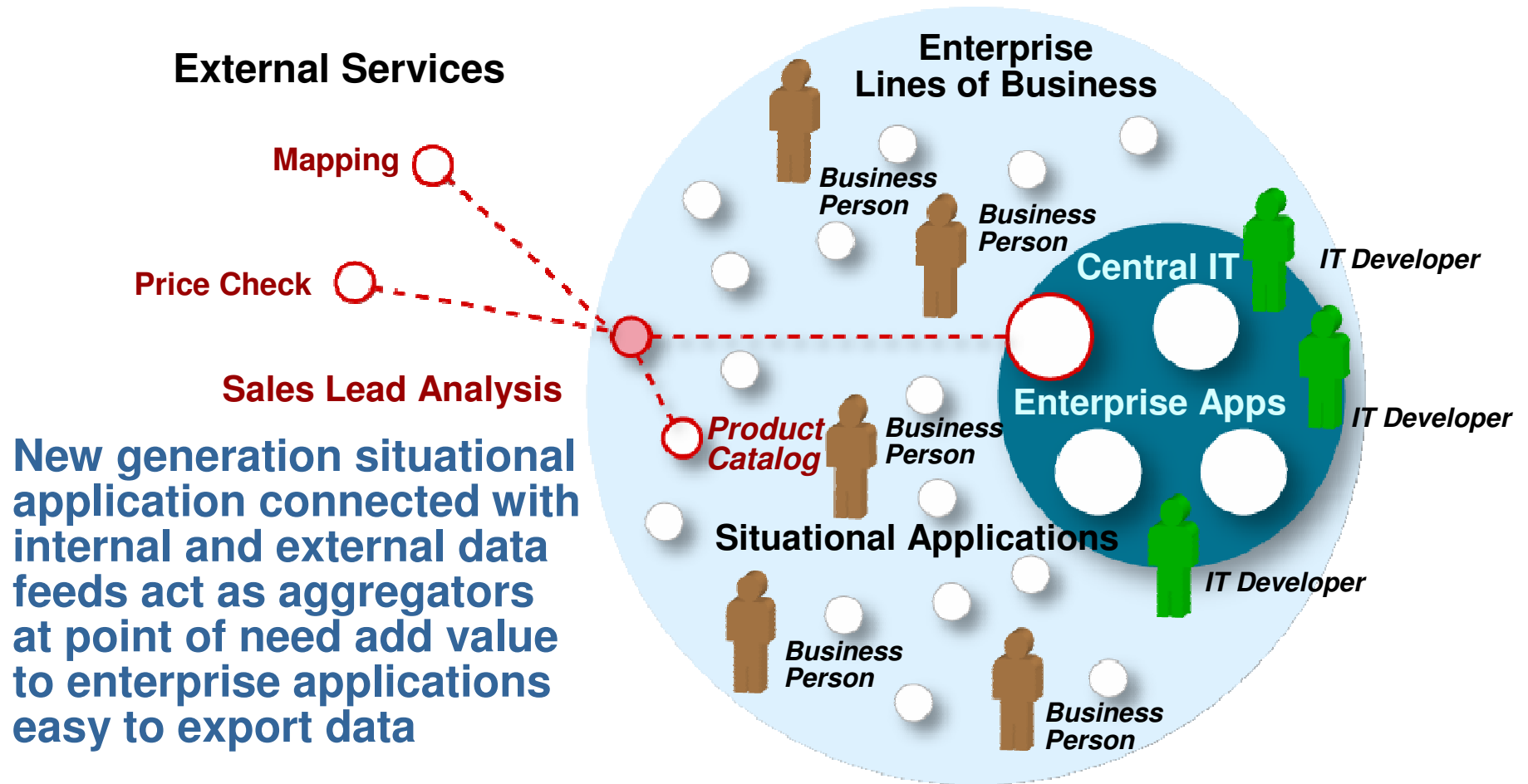
Web 2.0:

- Is about communities and social networks
- Builds contextual relationships and facilitates knowledge sharing
- Is about people and the way they collaborate



TAKING CHARGE OF CHANGE

“Composite” Applications



In the future, applications, data and collaboration tools will “mash up” into composite applications



TAKING CHARGE OF CHANGE

© 2007 IBM Corporation

Greater *Transparency* Through Data Mashups

The screenshot shows the Zillow.com website interface. At the top, the Zillow logo is followed by the text "Welcome! Please Sign In. New to Zillow? Register here." Below this is a navigation bar with links for Home, Map & Search, Post For Sale, Real Estate Guide, and My Zillow. A search bar is present with the text "Find Homes" and a search button. The main content area displays a map of Seattle, WA, with various property values overlaid. A callout box highlights a property at 5651 18th Ave SW, Seattle, WA 98106, with a price of \$465,000 and details: "4 bd / 2.5 ba / 1,830 sq ft". The map also shows other property values ranging from \$201K to \$441K. On the right side of the page, there are several advertisements for real estate mortgage loans, including "Real estate mortgage loan" from Refinance.Low.com and "Home Equity Loan Source" from LoanSrc.com. At the bottom of the page, there is a table with columns for Sort by, Status, Price, Zestimate*, Bd, Ba, Size**, and Offered by.

This example is a “mashup” of data from local deed registrars and real estate listings

IBM Social Software for Business – *Lotus Connections*

Lotus Connections is a new social software offering that lets you use the collective knowledge of your organization by dynamically building new connections between people and the information they know while you work on your daily tasks

Connections provides an integrated user experience for five components that are extensible and deliver enterprise-level security and scalability



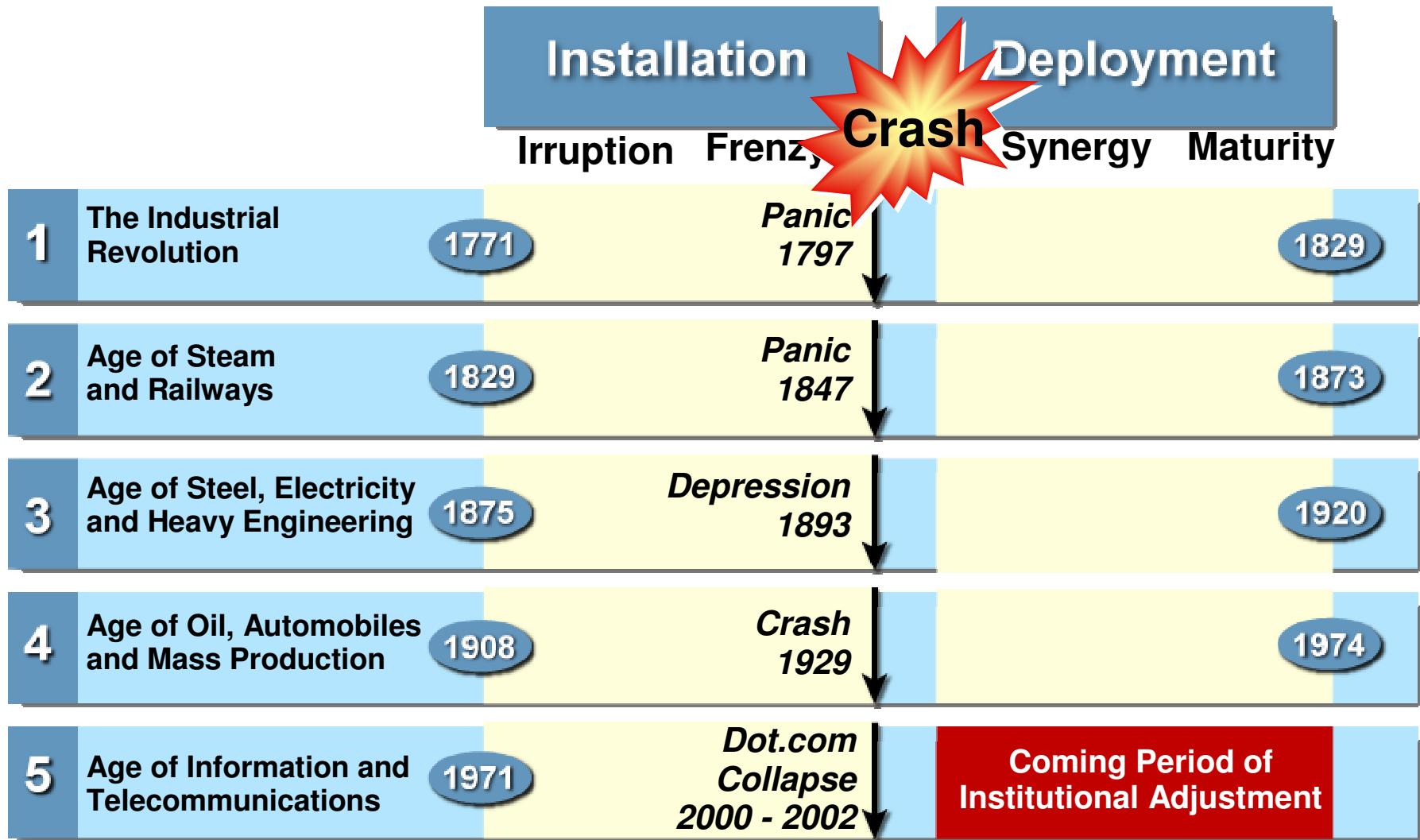
4 out of 5 of these services are live today, being used internally by IBMers



TAKING CHARGE OF CHANGE

© 2007 IBM Corporation

Five Historical Waves of Economic & Social Transformation



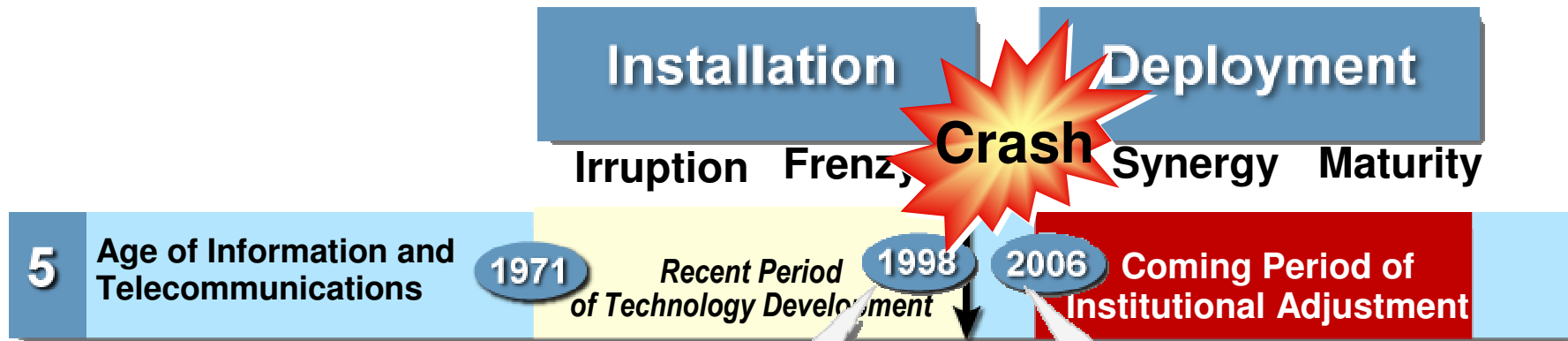
Source: "Technological Revolutions and Financial Capital", Carlota Perez, 2002



TAKING CHARGE OF CHANGE

© 2007 IBM Corporation

e-Business 2.0 Marks Onset of Deployment Period



e-Business 1.0 marked end of installation period

- Invention and build-out of Internet
- Widespread broadband connectivity
- Basic e-Commerce
- Broad digitization of the enterprise

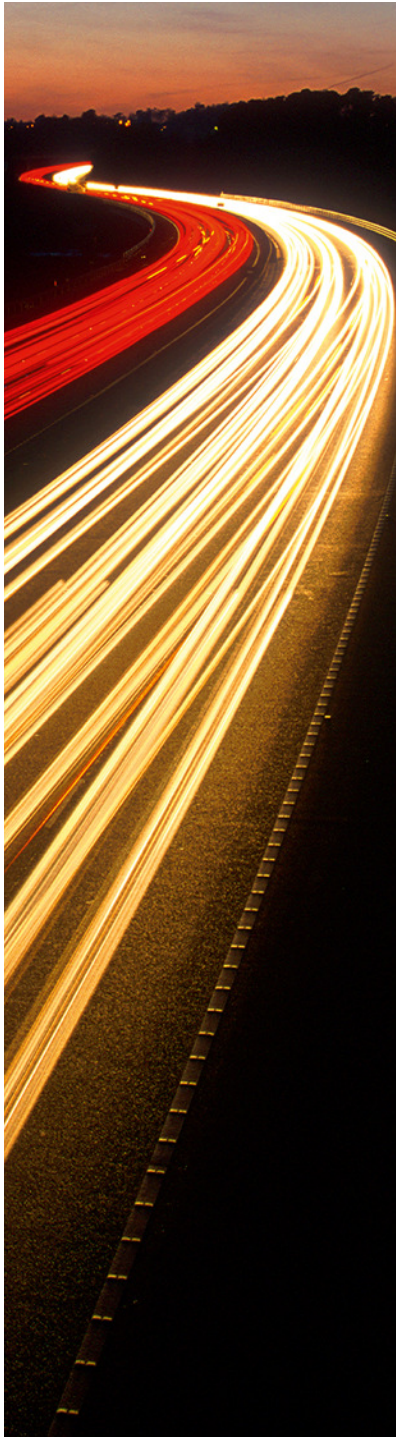
e-Business 2.0 marks beginning of deployment period

- Broadening use of standards
- Evolving, modular business designs
- Changing nature of process & services
- New focus on information value



TAKING CHARGE OF CHANGE

© 2007 IBM Corporation



STOP
FOLLOWING.
START
LEADING.

Taking Charge of Change

31st January 2008

